

FACT BOOK 2019

WEST CHESTER UNIVERSITY OF PENNSYLVANIA

West Chester University of Pennsylvania Office of Institutional Research

887 South Matlack Street
West Chester, PA 19383
Telephone (610) 436-2835

Fax (610) 436-2635

Introduction & Acknowledgements

This Fact Book provides some of the most commonly requested information about West Chester University. Much of the information is drawn from the University's database and state mandated reports. Other offices and sources used are cited throughout the document. The cooperation of those offices and sources is much appreciated.

The Fact Book is divided into several chapters: Admissions, Enrollment, Retention/Graduation Rates, Academic Degree Programs & Accredited Programs, Graduation/Degree Information, and Resources (including financial aid), Services and Facilities.

Comments and suggestions about additional information that might be included are much appreciated. Please forward your suggestions to ninamdar@wcupa.edu.

Additional institutional information is available on our website: <http://www.wcupa.edu/infoservices/oir/>

Table of Contents

Table of Contents	2-3
WCU Quick Facts	4
GENERAL INFORMATION	
Statement of Mission and Goals	6-8
West Chester University Organizational Chart	9
ADMISSIONS	
Undergraduate Admissions Standards	11
Admission Application Statistics	12-13
First Time, Full-Time, First Year by Gender and Race/Ethnicity	14
First Time, Full-Time, First Year by Admission Type	15
Feeder High Schools: Fall 2019	16
Feeder Colleges: Fall 2019	17
First Time, Full-Time, First Year Enrollment by County	18
First Time, Full-Time, First Year Enrollment by State	19
First Time, First Year Admission Yield Statistics	20
First Time, First Year Admission Yield Chart	21
First Time Transfer Admission Yield Statistics	22
First Time Transfer Admission Yield Chart	23
ENROLLMENT	
Head Count Enrollment by Gender and Race/Ethnicity	25
Head Count Enrollment by Degree Status and College Fall 2019	26
Head Count Enrollment by State: Fall 2016 to 2019	27-28
Enrollment by County for Pennsylvania Residents: Fall 2019	29
Head Count Enrollment by Ethnicity and Gender Fall 2015 to Fall 2019	30

To be continued.....

Table of Contents (continued)

ENROLLMENT (continued)	
Head Count Enrollment by College: Fall 2015 to Fall 2019	31-32
Head Count Enrollment by Student Level: Fall 2014 to 2019	33-34
Credit Hours and Student FTE Enrollment	35
RETENTION AND GRADUATION	
Retention & Graduation Rates for First-Time, Full-Time First Year: University Summary	37
Retention & Graduation Rates for First-Time, Full-Time First Year Student Cohorts by Gender	38
ACADEMIC AND DEGREE PROGRAMS	
Undergraduate Degrees and Certificate Programs	40-41
Graduate Degrees and Certificate Programs	42-43
Professional and Program Accreditations	44-45
DEGREES CONFERRED	
Undergraduate and Graduate Degrees Conferred by College and Academic Plan	47-62
RESOURCES, SERVICES & FACILITIES	
Tuition and Fees	64
Library Resources	66

Quick Facts

West Chester University
West Chester, PA 19383
Telephone (610) 436-1000
<http://www.wcupa.edu/>

Founded	1871
President	Christopher M. Fiorentino
University Accreditation	Middle States Commission on Higher Education
Fall 2019 Enrollment*	17,669
Undergraduate	14,615
Graduate	3,054
Fall 2019 Credit Hours	230,403.5
Undergraduate	209,580.5
Graduate	20,823.0
Undergraduate Degree Programs	60
Graduate Degree Programs	44
Master's Programs	40
Doctoral Programs	4
Certificate Programs	40
Degrees Awarded in 2018-2019	4,658
Bachelor's	3,698
Postbaccalaureate Certificate	353
Master's	936
Post-master's Certificate	17
Doctoral	24

*Represent IPEDS unduplicated total headcount.

Degree and Certificate program counts displayed above include only those programs which are offered to incoming new students.



General Information

Statement of Mission and Goals

West Chester University is a community of educators that develops graduates to succeed personally and professionally and contribute to the common good.

WCU GRADUATES WILL:

- Apply scientific reasoning and demonstrate quantitative and qualitative literacy
- Collaborate with others to solve problems and address societal needs
- Communicate effectively and participate in civic discourse
- Engage inclusively in a diverse society
- Understand the ethical implications of decisions and the world in which they live

INSTITUTIONAL GOALS:

To fulfill its mission as a public institution serving the Commonwealth, West Chester University will focus on student success and institutional improvement as measured by the degree to which WCU demonstrates:

- Access to learning
- Community and cultural engagement
- Continuous improvement
- Critical thinking
- Inclusion
- Scholarly and creative activities
- Sustainability

About West Chester University of Pennsylvania

West Chester University offers bachelors and masters degrees in the arts and sciences, teacher training and certification, advanced study preparation in fields such as medicine and law, education for specific professions, and continuing education.

Total enrollment at West Chester University includes 14,615 undergraduate students and 3,054 graduate students. This represents the IPEDS unduplicated headcount. While most undergraduates are recent high school graduates preparing for career objectives, many others are older individuals, including veterans and homemakers, who either never before had the opportunity for a college education or whose schooling was interrupted.

Most students are residents of Pennsylvania but students from other states and foreign countries are welcome. The student body at West Chester University represents a cross section of many ethnic, racial, and religious groups and includes students from all socioeconomic levels.

Like the world around it, West Chester University is constantly transforming. The school continues to broaden and modify the nature and number of its programs to reflect the needs of its students in their endeavor to prepare themselves for success and fulfillment in life.

The History of West Chester University of Pennsylvania

Founded in 1871, West Chester University began as West Chester Academy, a private, state-aided school that existed from 1812 to 1869. The academy enjoyed strong support from the highly intellectual Chester County Cabinet of the Natural Sciences of the pre-Civil War decades. It was recognized as one of Pennsylvania's leading preparatory schools, and its experience in teacher training laid the groundwork for the normal school years that were to follow.

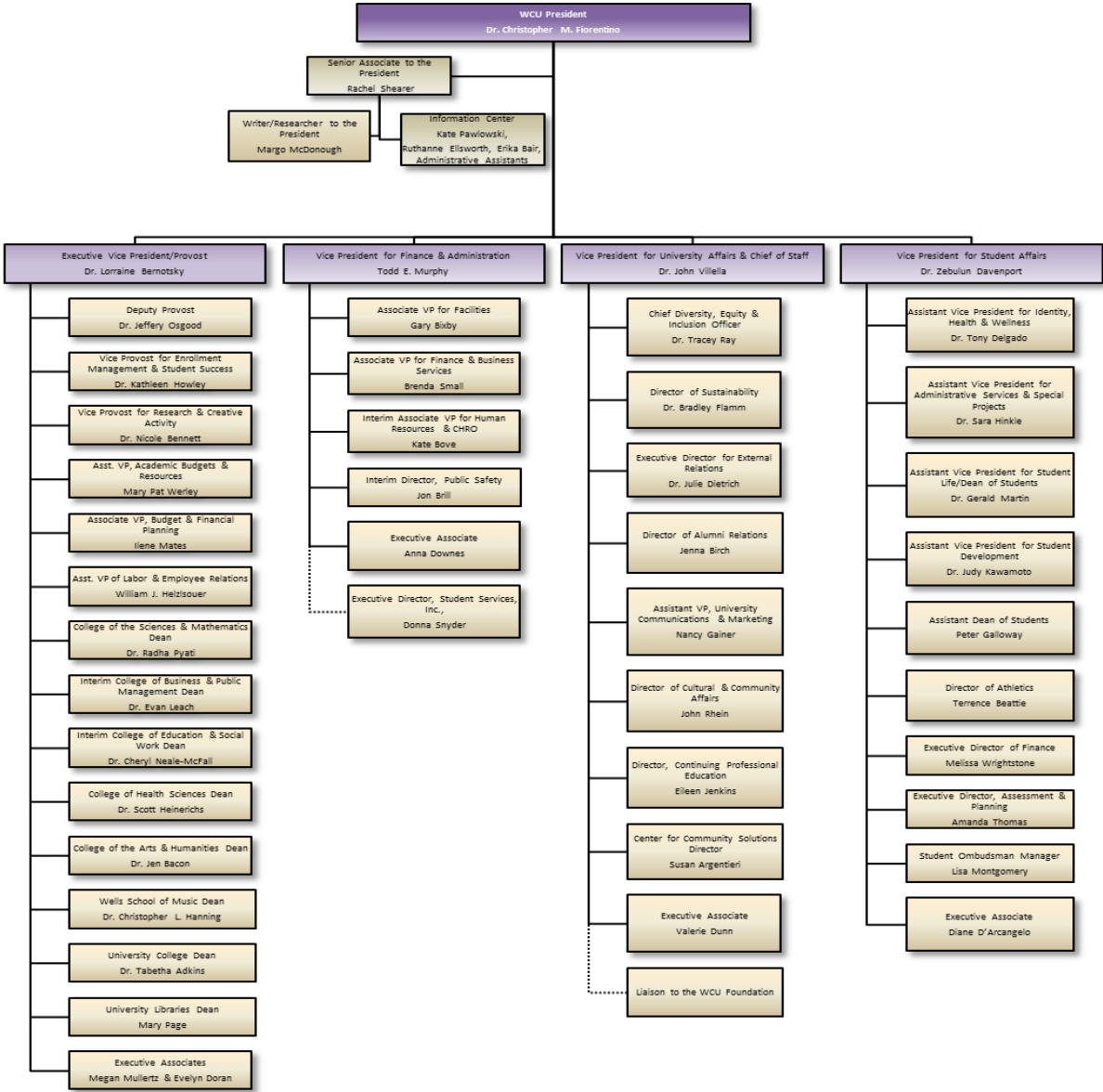
As the state began to take increasing responsibility for public education, the academy was transformed into West Chester Normal School, still privately owned but state certified. The normal school admitted its first class, consisting of 160 students, on September 25, 1871. In 1913, West Chester became the first of the normal schools to be owned outright by the Commonwealth.

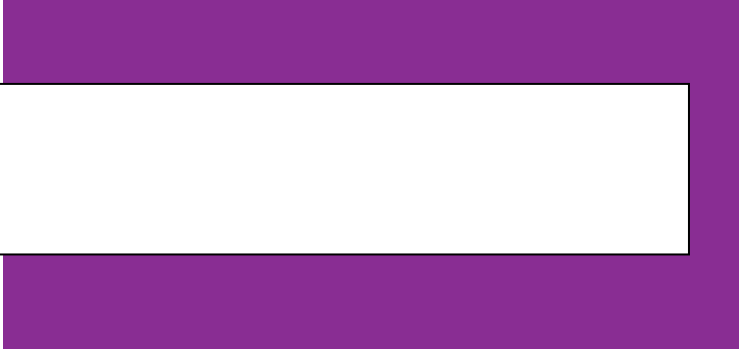
West Chester became West Chester State Teachers College in 1927 when Pennsylvania initiated a four-year program of teacher education. In 1960, as the Commonwealth paved the way for liberal arts programs in its college system, West Chester was renamed West Chester State College, and two years later introduced the liberal arts program that turned the one-time academy into a comprehensive college.

In recognition of the historic merit of the campus, in 1981 the West Chester State College Quadrangle Historic District was placed on the National Register of Historic Places. The buildings included in this historic district are Philips Memorial Building, Ruby Jones Hall, Recitation Hall, and the Old Library. Except for Philips, these buildings are all constructed of native Chester County serpentine stone.

West Chester State achieved another major milestone with passage of the State System of Higher Education bill. West Chester became one of the 14 universities in the State System of Higher Education on July 1, 1983. Along with its new name -- West Chester University of Pennsylvania of the State System of Higher Education -- the institution acquired a new system of governance and the opportunity to expand its degree programs.

Organizational Chart





ADMISSIONS

Undergraduate Admissions Standards

West Chester University prides itself on the holistic approach used in evaluating applicant credentials. Each application is reviewed individually, and we carefully consider scholastic performance and academic preparation to determine an individual's potential for success.

For general admission, as a first-year student, the Office of Admissions requires successful completion of a college preparatory curriculum in high school. Honors and AP level courses are preferred. The academic profile of the first year students who enrolled at West Chester University in Fall 2019 is a mean SAT combined score of 1,119 and mean ACT score of 23 (scores used for Admission Decision), a rank in the 39th percentile or top 61%, and a grade point average of 3.45.

Applicants who do not meet regular admissions standards may be considered for a special admissions program if appropriate or denied admission and counseled to enroll at another college or university for a minimum of 24 credits before reapplying as a transfer student.

Transfer applicants must have a minimum grade point average of 2.00 for admissions consideration. The majority of our transfers have a Cumulative GPA of 2.50 or better prior to transferring to the University. Some of our academic programs require a higher grade point average and specific course prerequisites. Pennsylvania Community College students who have earned an Associate of Arts or Associate of Science degree and students who have completed 12 or more transferable credits from a State System University with a 2.00 or above have an Academic Passport that provides entry into any university in the State System of Higher Education. For more information on admissions requirements and the Academic Passport, please contact the Office Admissions at (610) 436-3411 or e-mail ugadmiss@wcupa.edu.

Admission Application Statistics for First Time, First Year Students Fall 2019

Race/Ethnicity	Fall 2018			Fall 2019			Total	
	Male	Female	Total	Male	Female	Total	Change	% Change
African American								
Applied	490	918	1,408	744	1,416	2,160	752	53.41%
Accepted	274	531	805	341	719	1,060	255	31.68%
Enrolled	105	168	273	104	177	281	8	2.93%
Asian								
Applied	152	252	404	213	371	584	180	44.55%
Accepted	116	190	306	156	289	445	139	45.42%
Enrolled	31	39	70	30	37	67	-3	-4.29%
White								
Applied	3,096	5,436	8,532	3,655	6,321	9,976	1444	16.92%
Accepted	2,444	4,190	6,634	2,894	5,285	8,179	1545	23.29%
Enrolled	783	1,286	2,069	828	1,283	2,111	42	2.03%
Hawaiian/Pacific Islander								
Applied	4	2	6	3	5	8	2	33.33%
Accepted	3	2	5	2	4	6	1	20.00%
Enrolled	0	0	0	2	1	3	3	-
Hispanic or Latino								
Applied	312	635	947	401	935	1,336	389	41.08%
Accepted	218	454	672	257	645	902	230	34.23%
Enrolled	65	128	193	72	134	206	13	6.74%
Multiracial								
						0		
Applied	161	261	422	195	367	562	140	33.18%
Accepted	124	200	324	141	263	404	80	24.69%
Enrolled	59	59	118	45	64	109	-9	-7.63%
Native American								
Applied	2	15	17	8	5	13	-4	-23.53%
Accepted	1	9	10	6	5	11	1	10.00%
Enrolled	1	3	4	2	0	2	-2	-50.00%

to be continued.....

These headcounts are unduplicated and reflect the IPEDS unduplicated headcount.

Admission Application Statistics for First Time, First Year Students: Fall 2019 (continued)

Race/Ethnicity	Fall 2018			Fall 2019			Total	
	Male	Female	Total	Male	Female	Total	Change	%Change
Non-Resident Alien								
Applied	14	12	26	11	17	28	2	7.69%
Accepted	6	8	14	8	17	25	11	78.57%
Enrolled	1	5	6	0	2	2	-4	-66.67%
Not Supplied								
Applied	111	129	240	167	251	418	178	74.17%
Accepted	80	82	162	127	197	324	162	100.00%
Enrolled	21	23	44	32	58	90	46	104.55%
Total								
Applied	4,342	7,660	12,002	5,397	9,688	15,085	3083	25.69%
Accepted	3,266	5,666	8,932	3,932	7,424	11,356	2424	27.14%
Enrolled	1,066	1,711	2,777	1,115	1,756	2,871	94	3.38%

These headcounts are unduplicated and reflect the IPEDS unduplicated headcount.

First Time, Full-Time, First Year Enrolled Students by Gender and Race/Ethnicity

Race/Ethnicity	Fall 2018			Fall 2019			Total	
	Male	Female	Total	Male	Female	Total	Change	% Change
African American	104	167	271	103	177	280	9	3.32%
Asian	31	39	70	30	37	67	-3	-4.29%
White	782	1,283	2,065	824	1,280	2,104	39	1.89%
Hawaiian/Pacific Islander	0	0	0	2	1	3	3	-
Hispanic or Latino	65	128	193	71	132	203	10	5.18%
Multiracial	59	59	118	45	64	109	-9	-7.63%
Native American	1	3	4	2	0	2	-2	-50.00%
Non-Resident Alien	1	5	6	0	2	2	-4	-66.67%
Not Supplied	21	23	44	32	58	90	46	104.55%
Total	1,064	1,707	2,771	1,109	1,751	2,860	89	3.21%

These headcounts are unduplicated and reflect the IPEDS unduplicated headcount.

First Time, Full-Time, First Year Students by Admission Type

Admittance Type	2015		2016		2017		2018		2019	
	N	%	N	%	N	%	N	%	N	%
Regular	1,996	83.8%	1,961	80.3%	2,102	80.2%	2,225	80.3%	2,107	73.7%
ADP ACT 101	75	3.1%	69	2.8%	64	2.4%	61	2.2%	58	2.0%
ADP Non-ACT 101	106	4.5%	123	5.0%	116	4.4%	116	4.2%	130	4.5%
Special Admission	204	8.6%	288	11.8%	338	12.9%	369	13.3%	565	19.8%
Total	2,381		2,441		2,620		2,771		2,860	

These headcounts are unduplicated and reflect the IPEDS unduplicated headcount.

Feeder High Schools: Fall 2019

Pennsylvania High Schools With the Highest Number of First Time, First Year Students

School	#	School	#	School	#
Downingtown High School East	51	Central High School	24	Abington High School	15
Central Bucks High School South	41	Central Bucks High School East	22	Interboro High School	15
North Penn High School	39	Perkiomen Valley High School	22	Upper Moreland High School	15
West Chester East High School	38	Unionville High School	22	Oxford Area High School	15
Downingtown West	37	Souderton Area High School	22	Cumberland Valley High School	15
Penncrest High School	36	Great Valley High School	22	Emmaus High School	14
Upper Darby High School	36	Wilson High School	21	Manheim Township High School	14
Avon Grove High School	36	Archbishop Carroll High School	21	Warwick High School	14
B. Reed Henderson High School	36	Kennett High School	20	Hatboro-Horsham High School	14
West Chester Bayard Rustin Hs	36	Council Rock High School South	20	Red Land High School	13
Spring-Ford Senior High School	35	Monsignor Bonner & Archbishop Prendergast High School	19	Berks Catholic High School	13
Springfield High School	33	Pope John Paul II High School	19	St. Hubert High School	13
Bishop Shanahan High School	32	Upper Dublin High School	19	Upper Merion Area High School	13
Owen J. Roberts High School	31	Methacton High School	19	William Tennent High School	12
Garnet Valley High School	31	Boyertown Area Senior High School	18	Governor Mifflin School Dist	12
Haverford High School	29	Archbishop Wood High School	18	Norristown Area High School	12
Council Rock High School North	26	GW Carver High School Of Engineering and Science	18	Cherokee High School	11
Conestoga High School	26	Lansdale Catholic High School	18	Concord High School	10
Coatesville Area Senior Hs	25	Ridley High School	17	Wissahickon High School	10
Sun Valley High School	25	Pennsbury High School	17	Lower Merion High School	10
Cardinal O'Hara High School	25	Parkland High School	17	Quakertown Community Senior Hs	10
Marple Newtown High School	25	Hempfield High School	17	Dallastown Area High School	10
Neshaminy High School	25	Central Bucks High School West	16	Milton Hershey School	10
Pennridge High School	24	Pottsgrove High School	16	Mechanicsburg Area Senior Hs	10
Plymouth Whitemarsh High School	24	Phoenixville Area High School	16	Chichester High School	10

These headcounts are unduplicated and reflect the IPEDS unduplicated headcount.

Feeder Colleges: Fall 2019

Institutions Previously Attended With the Highest Number of New Fall Undergraduate Transfer Students

[Excludes students who transitioned from non-degree to degree as well as Transfers with first degree at WCU]

Name	Count	Percent	Type	State
Delaware County Community College	335	28.9%	2 Year Public	PA
Montgomery County Community College	112	9.7%	2 Year Public	PA
Bucks County Community College	81	7.0%	2 Year Public	PA
Community College of Philadelphia	64	5.5%	2 Year Public	PA
Harrisburg Area Community College	39	3.4%	2 Year Public	PA
Pennsylvania State University	37	3.2%	4 Year Public	PA
Bloomsburg University of Pennsylvania	20	1.7%	4 Year Public	PA
Temple University	20	1.7%	4 Year Public	PA
Northampton County Area Community College	18	1.6%	2 Year Public	PA
Shippensburg University of Pennsylvania	17	1.5%	4 Year Public	PA
Millersville University of Pennsylvania	14	1.2%	4 Year Public	PA
Kutztown University of Pennsylvania	14	1.2%	4 Year Public	PA
Indiana University of Pennsylvania	13	1.1%	4 Year Public	PA
Drexel University	10	0.9%	4 Year Private	PA
Lehigh Carbon Community College	10	0.9%	2 Year Public	PA
All Military	9	0.8%	-	-
Lock Haven University of Pennsylvania	9	0.8%	4 Year Public	PA
University of Pittsburgh Pittsburgh*	9	0.8%	4 Year Public	PA
La Salle University	8	0.7%	4 Year Private	PA
East Stroudsburg University of Pennsylvania	8	0.7%	4 Year Public	PA
Saint Joseph's University	6	0.5%	4 Year Private	PA
Mercer County Community College	6	0.5%	4 Year Public	NJ
Neumann University	6	0.5%	4 Year Private	PA
Reading Area Community College	5	0.4%	2 Year Public	PA
Harcum College	5	0.4%	2 Year Private	PA
University of Pittsburgh Johnstown	5	0.4%	4 Year Public	PA

These headcounts are unduplicated and reflect the IPEDS unduplicated headcount.

First Time, Full-Time, First Year Student Enrollment by Pennsylvania County: Fall 2019

Top 10 Counties* with Most Enrollments Ranked

County	Total	Percent	Rank
Adams	12	0.42%	
Allegheny	7	0.24%	
Armstrong	0	0.00%	
Beaver	0	0.00%	
Bedford	0	0.00%	
Berks	104	3.64%	7
Blair	3	0.10%	
Bradford	2	0.07%	
Bucks	285	9.97%	4
Butler	1	0.03%	
Cambria	2	0.07%	
Cameron	0	0.00%	
Carbon	13	0.45%	
Centre	3	0.10%	
Chester	488	17.06%	1
Clarion	0	0.00%	
Clearfield	1	0.03%	
Clinton	1	0.03%	
Columbia	5	0.17%	
Crawford	0	0.00%	
Cumberland	51	1.78%	10
Dauphin	34	1.19%	
Delaware	375	13.11%	3

County	Total	Percent	Rank
Elk	0	0.00%	
Erie	2	0.07%	
Fayette	0	0.00%	
Franklin	6	0.21%	
Fulton	0	0.00%	
Greene	0	0.00%	
Huntingdon	1	0.03%	
Indiana	1	0.03%	
Jefferson	0	0.00%	
Juniata	0	0.00%	
Lackawanna	37	1.29%	
Lancaster	125	4.37%	6
Lawrence	0	0.00%	
Lebanon	15	0.52%	
Lehigh	50	1.75%	
Luzern	30	1.05%	
Lycoming	9	0.31%	
McKean	1	0.03%	
Mercer	1	0.03%	
Mifflin	0	0.00%	
Monroe	19	0.66%	
Montgomery	419	14.65%	2
Montour	0	0.00%	

County	Total	Percent	Rank
Northampton	60	2.10%	9
Northumberland	0	0.00%	
Perry	1	0.03%	
Philadelphia	257	8.99%	5
Pike	8	0.28%	
Potter	0	0.00%	
Schuylkill	12	0.42%	
Snyder	3	0.10%	
Somerset	0	0.00%	
Sullivan	1	0.03%	
Susquehanna	3	0.10%	
Tioga	0	0.00%	
Union	5	0.17%	
Venango	0	0.00%	
Warren	0	0.00%	
Washington	0	0.00%	
Wayne	12	0.42%	
Westmoreland	0	0.00%	
Wyoming	0	0.00%	
York	69	2.41%	8
Out of State	325	11.36%	
Out of Country	1	0.03%	
Total	2,860	100.00%	

*County at the time of admission.

These headcounts are unduplicated and reflect the IPEDS unduplicated headcount.

First Time, Full-Time, First Year Student Enrollment by State: Fall 2019

Top 10 States* with Most Enrollments Ranked

State	Total	Percent	Rank
Alabama	0	0.00%	
Alaska	0	0.00%	
Arizona	0	0.00%	
Arkansas	0	0.00%	
California	1	0.03%	8(t)
Colorado	2	0.07%	7(t)
Connecticut	2	0.07%	7(t)
Delaware	39	1.36%	3
District of Columbia	0	0.00%	
Florida	1	0.03%	8(t)
Georgia	0	0.00%	
Hawaii	0	0.00%	
Idaho	0	0.00%	
Illinois	1	0.03%	8(t)
Indiana	0	0.00%	
Iowa	0	0.00%	
Kansas	1	0.03%	8(t)
Kentucky	0	0.00%	
Louisiana	0	0.00%	
Maine	0	0.00%	
Maryland	10	0.35%	4
Massachusetts	1	0.03%	8(t)
Michigan	1	0.03%	8(t)
Minnesota	1	0.03%	8(t)
Mississippi	0	0.00%	
Missouri	0	0.00%	
Montana	0	0.00%	
Nebraska	0	0.00%	

State	Total	Percent	Rank
Nevada	0	0.00%	
New Hampshire	0	0.00%	
New Jersey	244	8.53%	2
New Mexico	0	0.00%	
New York	9	0.31%	5
North Carolina	1	0.03%	8(t)
North Dakota	0	0.00%	
Ohio	1	0.03%	8(t)
Oklahoma	0	0.00%	
Oregon	0	0.00%	
Pennsylvania	2,534	88.60%	1
Rhode Island	1	0.03%	8(t)
South Carolina	0	0.00%	
South Dakota	0	0.00%	
Tennessee	0	0.00%	
Texas	2	0.07%	7(t)
Utah	0	0.00%	
Vermont	1	0.03%	8(t)
Virginia	5	0.17%	6
Washington	0	0.00%	
West Virginia	0	0.00%	
Wisconsin	0	0.00%	
Wyoming	0	0.00%	
Armed Forces	0	0.00%	
International	1	0.03%	
Other/Unknown	1	0.03%	
Total	2,860	100.00%	

*State at the time of admission.

These headcounts are unduplicated and reflect the IPEDS unduplicated headcount.

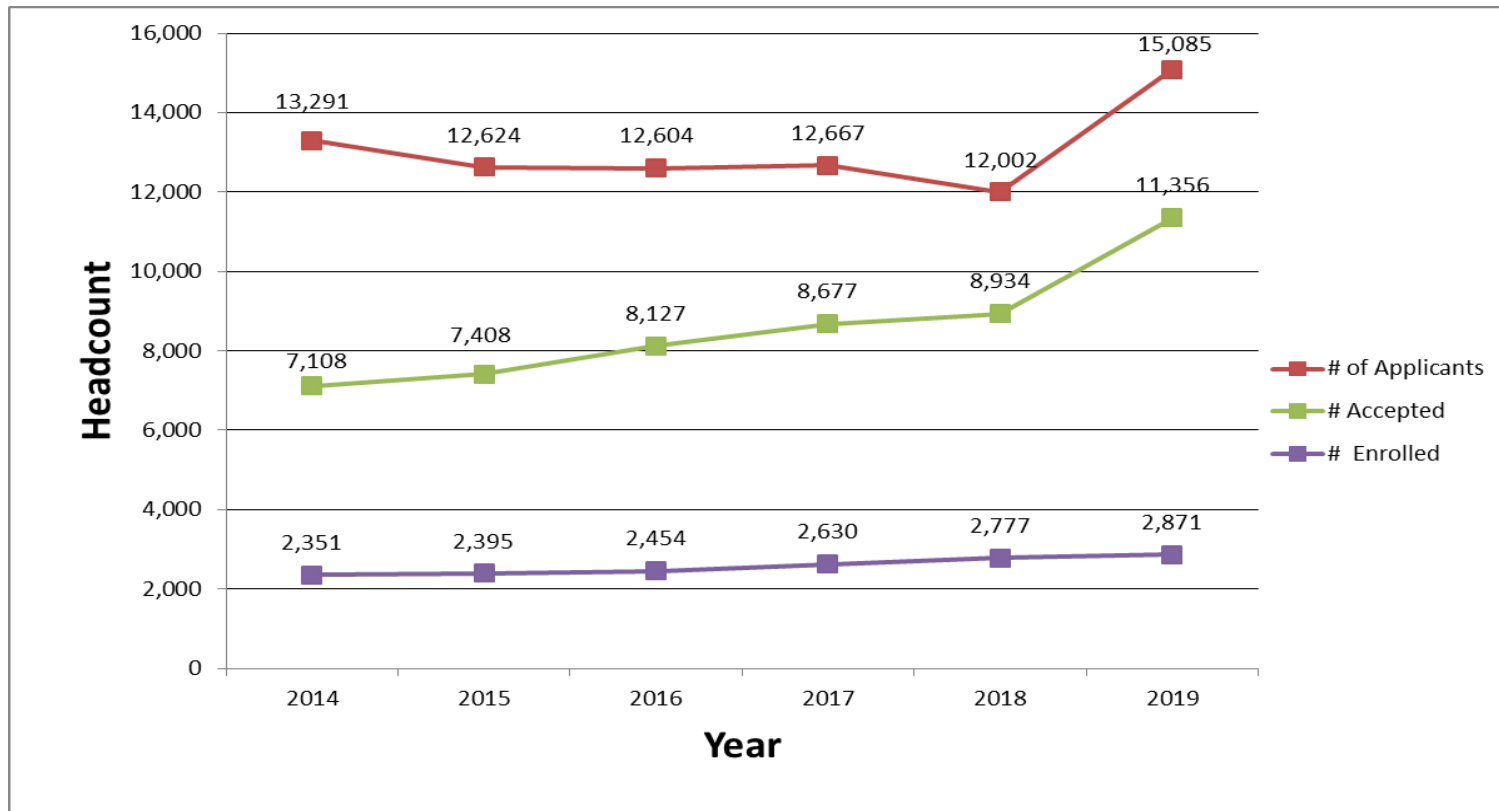
Admission Yield Statistics

First-Time, First Year Student Admission Yield

Year	# of Applicants	# Accepted	% Accepted	# Enrolled	% Accepted Enrolled	% of Applicants Enrolled
2009	11,534	6,667	49.0	2,248	33.6	16.5
2010	14,009	6,267	41.5	2,067	32.9	13.6
2011	14,097	7,013	46.5	2,292	32.6	15.1
2012	13,365	7,161	49.9	2,334	32.5	16.2
2013	13,438	6,922	51.5	2,298	33.1	17.1
2014*	13,291	7,108	53.5	2,351	33.0	17.6
2015*	12,624	7,408	58.7	2,395	32.3	19.0
2016*	12,604	8,127	64.5	2,454	30.2	19.5
2017*	12,667	8,677	68.5	2,630	30.3	20.8
2018*	12,002	8,934	74.5	2,777	31.1	23.1
2019*	15,085	11,356	75.3	2,871	25.3	19.0
5-YR Change	13.5%	59.8%		22.1%		
1-YR Change	25.7%	27.1%		3.4%		
5-YR Difference			21.81		-7.72	1.40
1-YR Difference			0.78		-5.82	-4.07

*Starting Fall 2014, number of applicants includes completed applications only.
 These headcounts are unduplicated and reflect the IPEDS unduplicated headcount.

First Time, First Year Student Admission Yield



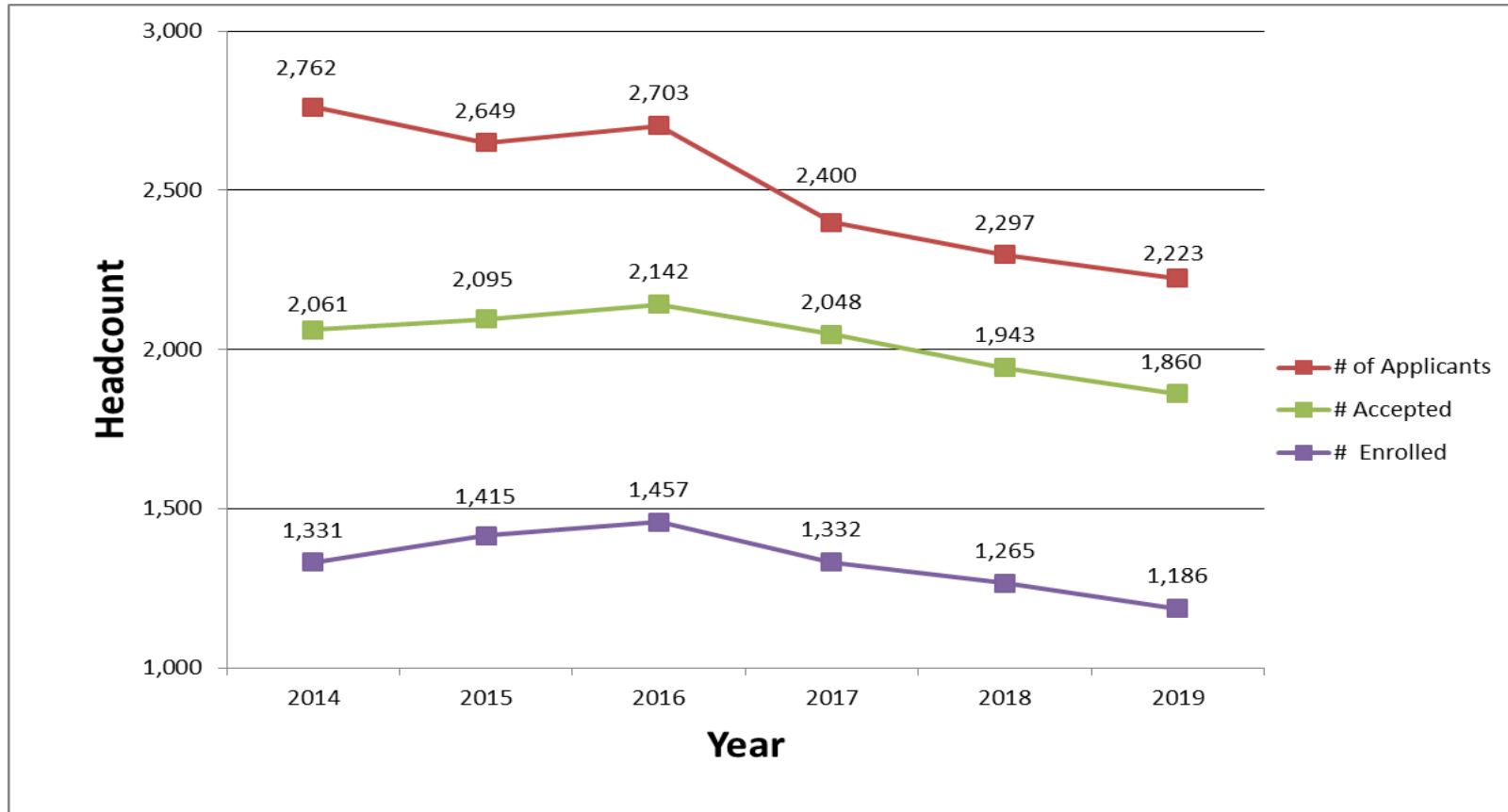
Starting Fall 2014, number of applicants includes completed applications only.

First Time Transfer Admission Yield

Year	# of Applicants	# Accepted	% Accepted	# Enrolled	% of Accepted Enrolled	% of Applicants Enrolled
2010	3,607	1,920	53.2	1,241	64.6	34.4
2011	3,742	2,029	54.2	1,276	62.9	34.1
2012	3,678	2,057	55.9	1,316	64	35.8
2013	2,883	2,003	69.5	1,350	67.9	46.8
2014*	2,762	2,061	74.6	1,331	64.6	48.2
2015*	2,649	2,095	79.1	1,415	67.5	53.4
2016*	2,703	2,142	79.2	1,457	68.0	53.9
2017*	2,400	2,048	85.3	1,332	65.0	55.5
2018*	2,297	1,943	84.6	1,265	65.1	55.1
2019*	2,223	1,860	83.7	1,186	63.8	53.4
5-YR Change	-19.5%	-9.8%		-10.9%		
1-YR Change	-3.2%	-4.3%		-6.2%		
5-YR Difference			9.05		-0.82	5.15
1-YR Difference			-0.93		-1.34	-1.75

*Starting Fall 2014, number of applicants includes completed applications only.
 These headcounts are unduplicated and reflect the IPEDS unduplicated headcount.

First Time Transfer Admission Yield



Starting Fall 2014, number of applicants includes completed applications only.



ENROLLMENT

Head Count Enrollment by Gender and Race/Ethnicity: Fall 2019

Gender	Undergraduate		Graduate		Total
	Full-Time	Part-time	Full-Time	Part-time	
Male	5,254	698	291	638	6,881
Female	7,790	873	759	1,366	10,788
Total	13,044	1,571	1,050	2,004	17,669

Ethnicity	Undergraduate		Graduate		Total
	Full-Time	Part-time	Full-Time	Part-time	
African American	1,371	238	211	225	2,045
Native American	17	1	0	4	22
Asian	312	60	27	66	465
Caucasian	9,746	1,064	653	1,550	13,013
Hawaiian/Pacific Islander	8	1	2	1	12
Hispanic	815	100	64	80	1,059
Non-Resident Alien	57	1	38	13	109
Multiracial	478	60	35	36	609
Not Supplied	240	46	20	29	335
Total	13,044	1,571	1,050	2,004	17,669

These headcounts are unduplicated and reflect the IPEDS unduplicated headcount.

Head Count Enrollment by Degree Status and College: Fall 2019

Degree Status	Undergraduate		Graduate		Total
	Full-Time	Part-time	Full-Time	Part-time	
Degree Seeking	13,017	1,311	1,013	1,741	17,082
Non-degree Seeking	27	260	37	263	587
Total	13,044	1,571	1,050	2,004	17,669

College	Undergraduate		Graduate		Total
	Full-Time	Part-time	Full-Time	Part-time	
Arts & Humanities	1,322	137	55	121	1,635
Business and Public Management	3,724	308	184	727	4,943
Education & Social Work	1,449	113	421	639	2,622
Health Sciences	2,018	352	247	227	2,844
Science & Mathematics	2,607	260	119	187	3,173
University College	1,592	381	1	72	2,046
School of Music	332	20	23	31	406
Total	13,044	1,571	1,050	2,004	17,669

These headcounts are unduplicated and reflect IPEDS unduplicated headcount.

University College includes non-degree and undeclared major students.

Headcounts displayed are per the new organizational structure.

Enrollment by State at the Time of Admission: Fall 2016 to Fall 2019

State	Fall 2016			Fall 2017			Fall 2018			Fall 2019		
	UG	G	Total	UG	G	Total	UG	G	Total	UG	G	Total
Alabama	1	1	2	1	1	2	0	2	2	0	2	2
Alaska	1	0	1	1	0	1	0	0	0	0	0	0
Arizona	1	1	2	1	1	2	1	2	3	0	2	2
Arkansas	0	0	0	0	0	0	0	2	2	0	1	1
California	9	8	17	7	11	18	5	8	13	3	7	10
Colorado	0	0	0	1	0	1	2	1	3	3	2	5
Connecticut	6	1	7	6	4	10	7	5	12	5	3	8
Delaware	168	47	215	162	61	223	166	61	227	166	64	230
Florida	6	4	10	11	10	21	7	9	16	9	5	14
Georgia	0	1	1	2	5	7	3	8	11	2	7	9
Hawaii	2	0	2	1	0	1	0	0	0	0	0	0
Idaho	0	0	0	0	0	0	0	0	0	0	0	0
Illinois	0	1	1	1	3	4	3	4	7	2	1	3
Indiana	0	0	0	0	1	1	0	2	2	0	4	4
Iowa	1	0	1	0	0	0	0	0	0	0	1	1
Kansas	0	0	0	0	1	1	0	1	1	1	2	3
Kentucky	0	2	2	1	1	2	1	1	2	1	2	3
Louisiana	1	0	1	1	0	1	1	1	2	1	2	3
Maine	1	1	2	1	1	2	2	2	4	1	3	4
Maryland	87	20	107	80	29	109	70	27	97	68	21	89
Massachusetts	4	2	6	4	4	8	5	7	12	6	5	11
Michigan	3	1	4	2	0	2	2	1	3	2	4	6
Minnesota	0	3	3	0	3	3	0	1	1	1	1	2
Mississippi	0	0	0	0	0	0	0	0	0	0	0	0
Missouri	0	1	1	0	1	1	0	0	0	0	0	0
Montana	0	1	1	1	1	2	1	0	1	1	0	1
Nebraska	0	0	0	0	0	0	0	0	0	0	1	1
Nevada	1	0	1	1	0	1	1	0	1	0	0	0
New Hampshire	2	0	2	2	0	2	2	1	3	2	2	4

to be continued.....

These headcounts are unduplicated and reflect the IPEDS unduplicated headcount.

Enrollment by State at the Time of Admission: Fall 2016 to Fall 2019 (continued)

STATE	Fall 2016			Fall 2017			Fall 2018			Fall 2019		
	UG	G	Total	UG	G	Total	UG	G	Total	UG	G	Total
New Jersey	1,273	74	1,347	1,188	91	1,279	1,136	100	1,236	1,052	99	1,151
New Mexico	1	1	2	0	0	0	0	3	3	1	2	3
New York	60	14	74	55	18	73	49	21	70	45	25	70
North Carolina	1	7	8	2	5	7	0	6	6	1	11	12
North Dakota	1	0	1	1	0	1	0	0	0	0	0	0
Ohio	2	6	8	4	7	11	6	6	12	6	6	12
Oklahoma	0	0	0	0	1	1	0	0	0	0	2	2
Oregon	0	0	0	0	0	0	0	0	0	0	2	2
Pennsylvania	12,686	2,348	15,034	12,841	2,528	15,369	13,031	2,591	15,622	13,170	2,694	15,864
Rhode Island	1	0	1	2	1	3	4	1	5	4	0	4
South Carolina	2	2	4	4	3	7	4	3	7	4	0	4
South Dakota	0	0	0	0	0	0	0	0	0	0	0	0
Tennessee	0	0	0	0	2	2	0	3	3	0	2	2
Texas	4	9	13	2	10	12	3	15	18	4	10	14
Utah	0	1	1	0	2	2	0	2	2	0	2	2
Vermont	1	0	1	1	1	2	1	1	2	2	1	3
Virginia	16	9	25	15	10	25	12	11	23	15	15	30
Washington	0	2	2	0	1	1	0	0	0	0	2	2
Washington D.C.	1	1	2	1	2	3	0	1	1	0	1	1
West Virginia	1	0	1	1	2	3	1	2	3	1	2	3
Wisconsin	1	1	2	1	4	5	1	5	6	1	2	3
Wyoming	0	0	0	0	0	0	0	0	0	0	0	0
Armed Forces	0	1	1	0	3	3	0	2	2	0	0	0
International	52	37	89	45	26	71	32	24	56	20	13	33
Other/Unknown	0	0	0	1	0	1	8	17	25	15	21	36
TOTAL	14,397	2,608	17,005	14,451	2,855	17,306	14,567	2,960	17,527	14,615	3,054	17,669
In-State	12,686	2,348	15,034	12,841	2,528	15,369	13,031	2,591	15,622	13,170	2,694	15,864
Out-of-State	1,711	260	1,971	1,610	327	1,937	1,536	369	1,905	1,445	360	1,805
Out-of-State %	11.88%	9.97%	11.59%	11.14%	11.45%	11.19%	10.54%	12.47%	10.87%	9.89%	11.79%	10.22%

These headcounts are unduplicated and reflect the IPEDS unduplicated headcount.

Enrollment by County for Pennsylvania Residents: Fall 2019

Top 10 Counties* With Most Enrollments Ranked

County	Total	Percent	Rank
Adams	50	0.28%	
Allegheny	45	0.25%	
Armstrong	0	0.00%	
Beaver	5	0.03%	
Bedford	0	0.00%	
Berks	563	3.19%	6
Blair	5	0.03%	
Bradford	12	0.07%	
Bucks	1,488	8.42%	5
Butler	11	0.06%	
Cambria	7	0.04%	
Cameron	0	0.00%	
Carbon	32	0.18%	
Centre	17	0.10%	
Chester	4,222	23.89%	1
Clarion	1	0.01%	
Clearfield	4	0.02%	
Clinton	3	0.02%	
Columbia	30	0.17%	
Crawford	2	0.01%	
Cumberland	248	1.40%	
Dauphin	221	1.25%	
Delaware	2,749	15.56%	2

County	Total	Percent	Rank
Elk	0	0.00%	
Erie	8	0.05%	
Fayette	0	0.00%	
Franklin	26	0.15%	
Fulton	1	0.01%	
Greene	0	0.00%	
Huntingdon	3	0.02%	
Indiana	5	0.03%	
Jefferson	0	0.00%	
Juniata	1	0.01%	
Lackawanna	187	1.06%	
Lancaster	500	2.83%	7
Lawrence	1	0.01%	
Lebanon	74	0.42%	
Lehigh	308	1.74%	9
Luzerne	121	0.68%	
Lycoming	24	0.14%	
McKean	2	0.01%	
Mercer	4	0.02%	
Mifflin	2	0.01%	
Monroe	99	0.56%	
Montgomery	2,371	13.42%	3
Montour	4	0.02%	

County	Total	Percent	Rank
Northampton	290	1.64%	10
Northumberland	20	0.11%	
Perry	9	0.05%	
Philadelphia	1,537	8.70%	4
Pike	52	0.29%	
Potter	1	0.01%	
Schuylkill	71	0.40%	
Snyder	11	0.06%	
Somerset	0	0.00%	
Sullivan	3	0.02%	
Susquehanna	11	0.06%	
Tioga	3	0.02%	
Union	13	0.07%	
Venango	0	0.00%	
Warren	1	0.01%	
Washington	4	0.02%	
Wayne	30	0.17%	
Westmoreland	7	0.04%	
Wyoming	9	0.05%	
York	336	1.90%	8
Out of State	1805	10.22%	
Total	17,669	100.00%	

*County at the time of admission.

These headcounts are unduplicated and reflect the IPEDS unduplicated headcount.

Head Count Enrollment: Fall 2015 to 2019

Five-Year Enrollment by Ethnicity and Gender

Undergraduate Students

Ethnicity	2015		2016		2017		2018		2019	
	Male	Female	Male	Female	Male	Female	Male	Female	Male	Female
White	4,519	6,541	4,533	6,485	4,549	6,365	4,538	6,354	4,448	6,362
African American	575	914	595	1022	603	1027	599	1051	600	1009
Hispanic	314	448	345	446	345	486	341	527	351	564
Asian	118	187	126	202	143	214	147	218	143	229
Hawaiian/Pacific Islander	7	10	8	8	8	6	5	4	6	3
Native American	1	13	2	12	3	14	5	15	6	12
NRA-International	25	43	24	43	19	44	26	45	23	35
Multiracial	167	242	176	263	207	278	231	284	247	291
Not Supplied	36	52	51	56	59	81	80	97	128	158
Total	5,547	8,297	5,762	8,450	5,936	8,515	5,936	8,515	5,952	8,663

Graduate Students

Ethnicity	2015		2016		2017		2018		2019	
	Male	Female	Male	Female	Male	Female	Male	Female	Male	Female
White	511	1,285	597	1,366	709	1,447	735	1,470	677	1,526
African American	86	233	102	274	115	271	108	279	114	322
Hispanic	20	56	21	64	29	74	31	74	42	102
Asian	15	47	21	38	35	47	40	45	34	59
Hawaiian/Pacific Islander	0	0	1	1	0	0	0	0	1	2
Native American	0	2	0	1	0	0	1	1	4	0
NRA-International	34	50	25	37	21	35	22	37	16	35
Multiracial	9	28	8	32	13	40	15	52	20	51
Not Supplied	4	5	8	12	7	12	21	29	21	28
Total	679	1,706	783	1,825	929	1,926	929	1,926	929	2,125

These headcounts are unduplicated and reflect the IPEDS unduplicated headcount.

Head Count Enrollment: Fall 2015 to 2019 Enrollment by College

Undergraduate Students

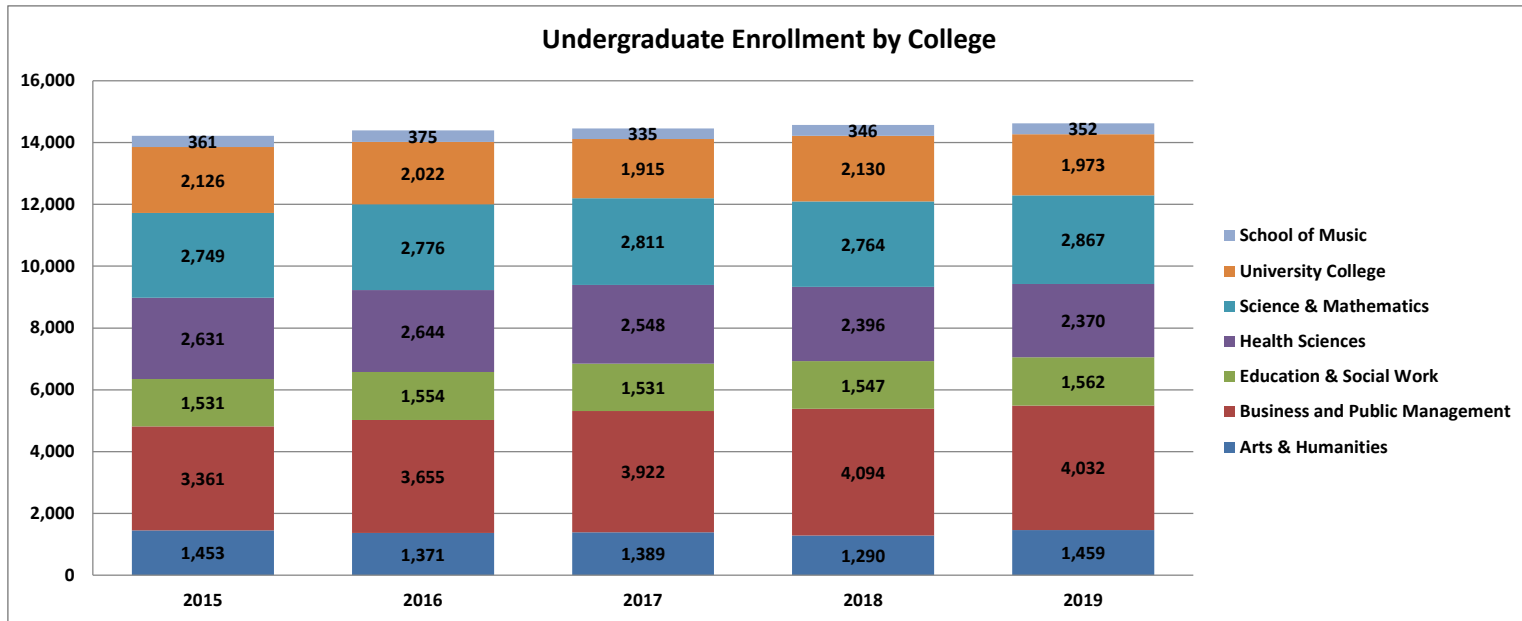
College	2015	2016	2017	2018	2019
Arts & Humanities	1,453	1,371	1,389	1,290	1,459
Business and Public Management	3,361	3,655	3,922	4,094	4,032
Education & Social Work	1,531	1,554	1,531	1,547	1,562
Health Sciences	2,631	2,644	2,548	2,396	2,370
Science & Mathematics	2,749	2,776	2,811	2,764	2,867
University College	2,126	2,022	1,915	2,130	1,973
School of Music	361	375	335	346	352
Total	14,212	14,397	14,451	14,567	14,615

Graduate Students

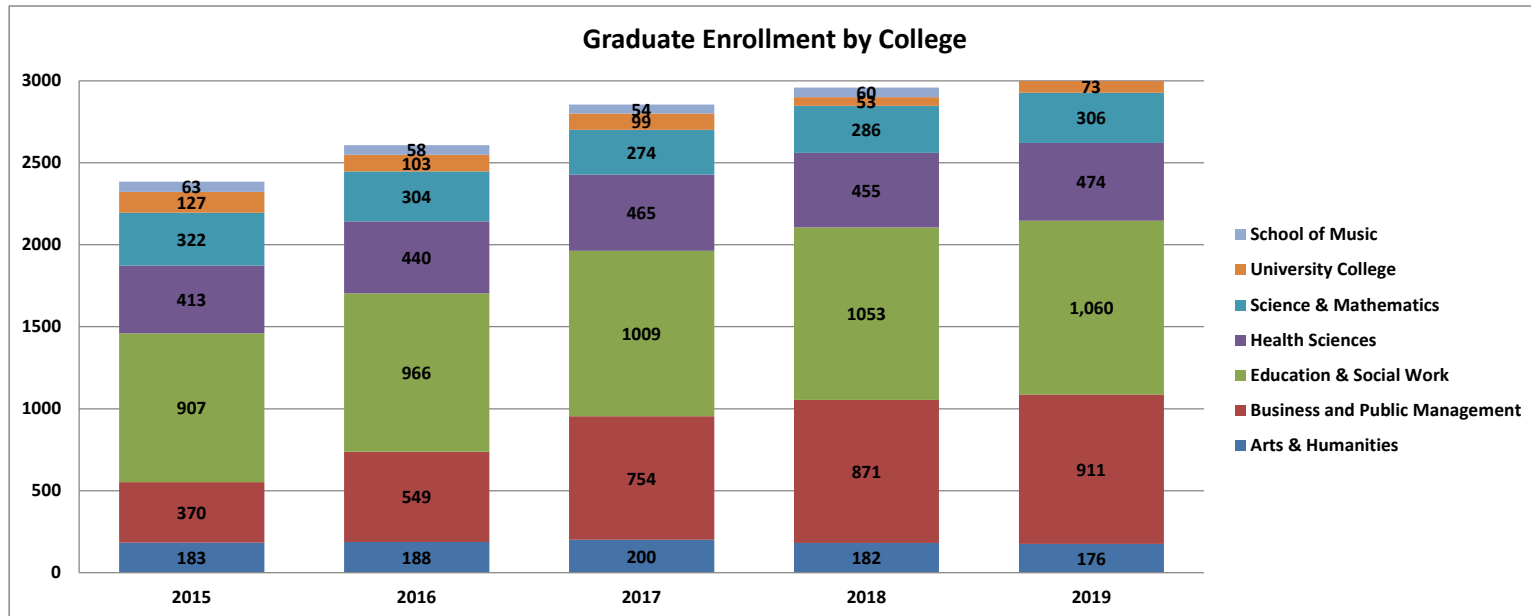
College	2015	2016	2017	2018	2019
Arts & Humanities	183	188	200	182	176
Business and Public Management	370	549	754	871	911
Education & Social Work	907	966	1009	1053	1,060
Health Sciences	413	440	465	455	474
Science & Mathematics	322	304	274	286	306
University College	127	103	99	53	73
School of Music	63	58	54	60	54
Total	2,385	2,608	2,855	2,960	3,054

*University College include non-degree and "Exploratory Studies" major students.
 These headcounts are unduplicated and reflect the IPEDS unduplicated headcount.
 Headcounts displayed in the tables are per the new organizational structure.

Head Count Enrollment: Fall 2015 to 2019 Enrollment by College: Five Falls



Note: Non-degree and undeclared major students are included in University College.

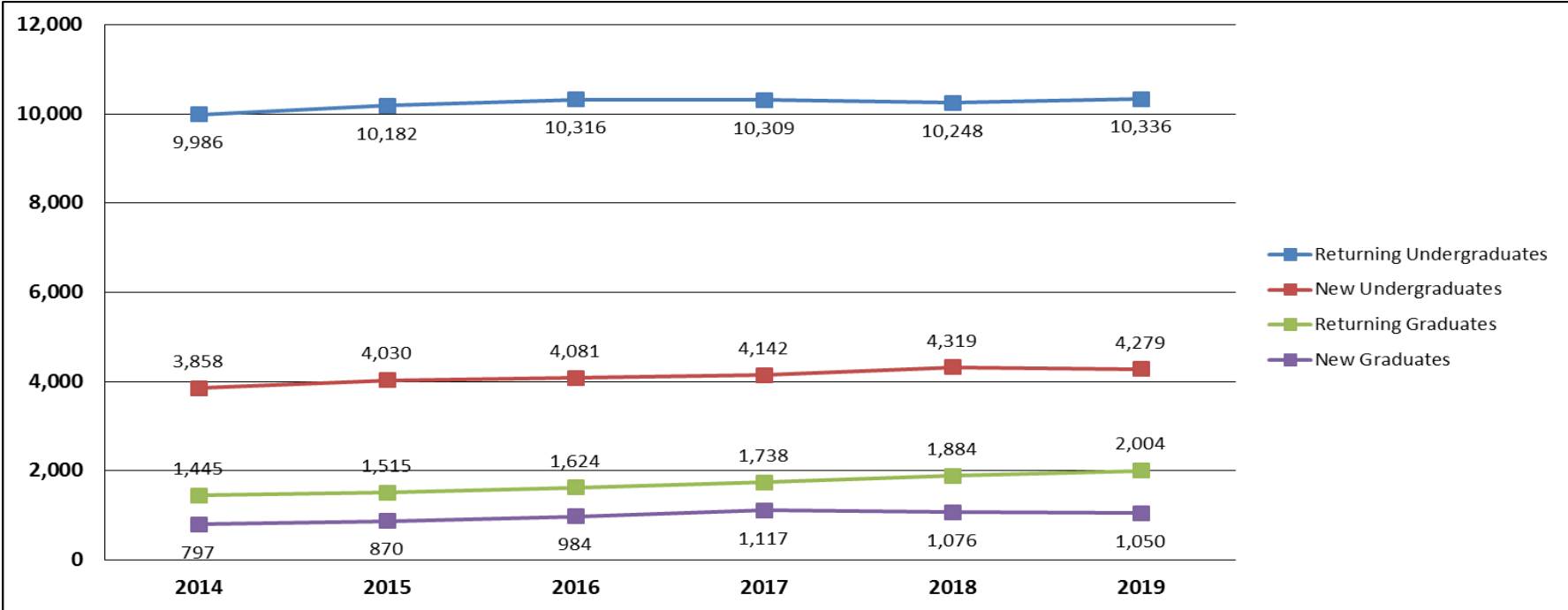


Head Count Enrollment by Student Level: Fall 2014 to Fall 2019

Fall Semester	2014	2015	2016	2017	2018	2019	One Year Difference
Undergraduate							
New First Year Degree Seeking	2,351	2,395	2,454	2,630	2,777	2,871	94
New Transfer Degree Seeking	1,331	1,415	1,457	1,332	1,265	1,186	-79
New Readmits Degree Seeking	107	100	56	73	67	60	-7
New Undergraduate Non Degree	69	120	114	107	210	162	-48
Returning Undergraduate Degree Seeking First Year	555	596	573	663	666	629	-37
Returning Undergraduate Degree Seeking Sophomore	2,650	2,616	2,671	2,611	2,719	2,878	159
Returning Undergraduate Degree Seeking Junior	2,969	3,087	3,052	2,976	2,904	3,019	115
Returning Undergraduate Degree Seeking Senior	3,647	3,738	3,859	3,917	3,838	3,685	-153
Returning Undergraduate Non Degree	165	145	161	142	121	125	4
Graduate							
New Masters	612	686	770	896	887	851	-36
New Doctorate	17	38	74	69	71	60	-11
New Graduate Non Degree	168	146	140	152	118	139	21
Returning Masters	1,211	1,287	1,357	1,462	1,615	1,701	86
Returning Doctorate	15	40	72	107	108	142	34
Returning Graduate Non Degree	219	188	195	169	161	161	0
Total Enrollment	16,086	16,597	17,005	17,306	17,527	17,669	142

These headcounts are unduplicated and reflect the IPEDS unduplicated headcount.

Headcount Enrollment by Student Level Fall 2014-2019



Annual Course Credit Hours and Student FTE Enrollment FY 2014-15 to FY 2018-19

Student FTE Enrollment: FY 2014-15 to FY 2018-19

FTE Division	2014-15	2015-16	2016-17	2017-18	2018-19	One Year Difference
Lower Division Full-Time Equivalent Students	8,277.9	8,458.2	8,386.1	8,478.7	8,542.2	63.5
Upper Division Full-Time Equivalent Students	5,283.4	5,356.9	5,480.7	5,522.3	5,499.7	-22.6
Graduate Division Full-Time Equivalent Students	1,566.9	1,620.0	1,755.3	1,889.5	1,982.9	93.4
Total Full-Time Equivalent Students	15,128.2	15,435.1	15,622.1	15,890.5	16,024.8	134.3

Annual Course Credit Hours: FY 2014-15 to FY 2018-19

Credit Hours by Course Division	2014-15	2015-16	2016-17	2017-18	2018-19	One Year Difference
Lower Division Course Credit Hours	248,336.5	253,747.0	251,582.0	254,360.0	256,266.0	1,906.0
Upper Division Course Credit Hours	158,501.5	160,707.5	164,420.5	165,667.5	164,991.0	-676.5
Graduate Division Course Credit Hours	37,606.0	38,879.0	42,127.0	45,349.0	47,590.5	2,241.5
Total University Course Credit Hours	444,444.0	453,333.5	458,129.5	465,376.5	468,847.5	3,471.0

A large purple graphic element consisting of a vertical bar on the right side and two horizontal bars extending to the left from the top and bottom of the vertical bar, forming a partial frame around the title.

RETENTION AND GRADUATION

Retention and Graduation Rates for First Time, Full-Time, First Year Degree-Seeking Student Cohorts -- University Summary

Fall Cohort	N 1st Fall	2nd Fall		3rd Fall		4th Fall		5th Fall				6th Fall				7th Fall			
		Cohort Retained		Cohort Retained		Cohort Retained		Cumulative Graduated within 4 yrs		Cohort Retained		Cumulative Graduated within 5 yrs		Cohort Retained		Cumulative Graduated within 6 yrs		Cohort Retained	
		n	% 1F	n	% 1F	n	% 1F	n	% 1F	n	% 1F	n	% 1F	n	% 1F	n	% 1F	n	% 1F
2005	1,897	1,609	84.9	1,444	76.2	1,378	72.8	812	42.9	529	27.9	1,238	65.4	81	4.3	1,298	68.5	26	1.4
2006	1,885	1,617	85.8	1,468	77.9	1,401	74.4	803	42.6	553	29.4	1,233	65.5	93	4.9	1,298	68.9	26	1.4
2007	1,957	1,650	84.4	1,511	77.3	1,428	73.0	857	43.8	536	27.4	1,266	64.8	96	4.9	1,346	68.8	27	1.4
2008	1,993	1,683	84.4	1,517	76.2	1,453	72.9	870	43.7	528	26.5	1,271	63.8	108	5.4	1,340	67.3	35	1.8
2009	2,241	1,909	85.2	1,747	78.0	1,693	75.5	954	42.6	670	29.9	1,502	67.0	113	5.0	1,588	70.9	35	1.6
2010	2,062	1,775	86.1	1,638	79.4	1,568	76.1	947	46.0	555	26.9	1,391	67.5	88	4.3	1,444	70.1	31	1.5
2011	2,283	1,950	85.4	1,822	79.8	1,733	75.9	1,110	48.7	592	26.0	1,587	69.6	102	4.5	1,657	72.6	25	1.1
2012	2,326	2,032	87.4	1,882	80.9	1,804	77.6	1,178	50.7	596	25.6	1,662	71.5	97	4.2	1,739	74.8	30	1.3
2013	2,292	2,014	87.9	1,885	82.3	1,803	78.8	1,237	54.1	558	24.4	1,698	74.2	73	3.2	1,755	76.7	31	1.4
2014	2,344	2,060	87.9	1,930	82.4	1,862	79.5	1,298	55.4	515	22.0	1,699	72.5	89	3.8				
2015	2,381	2,043	85.8	1,909	80.2	1,810	76.1	1,249	52.5	499	21.0								
2016	2,441	2,077	85.1	1,904	78.0	1,815	74.4												
2017	2,620	2,215	84.6	2,055	78.5														
2018	2,771	2,369	85.5																
2019	2,860																		

Note: Data is from Fall enrollment at census dates and completions files as reported to IPEDS. Includes degree sweeps and IPEDS exclusions through 10/2019.

Second-Year Retention Rates for First Time, Full-Time, First Year Degree-Seeking Student Cohorts by Gender

Fall Cohort	Male			Female		
	N 1 st Fall	Retained 2nd Fall		N 1 st Fall	Retained 2nd Fall	
		#	%		#	%
2012	869	764	87.9	1,457	1,268	87.0
2013	810	687	84.8	1,482	1,327	89.5
2014	892	790	88.6	1,452	1,270	87.5
2015	888	746	84.0	1,493	1,297	86.9
2016	944	788	83.5	1,497	1,289	86.1
2017	1,031	850	82.5	1,589	1,365	85.9
2018	1,064	892	83.8	1,707	1,477	86.6
2019	1,109			1,751		

Four Year Graduation Rates for First Time, Full-Time, First Year Degree-Seeking Student Cohorts by Gender

Fall Cohort	Male			Female		
	N 1st Fall	Graduated within 4 years		N 1st Fall	Graduated within 4 years	
		#	%		#	%
2010	767	264	34.5	1,295	683	52.7
2011	904	338	37.4	1,379	772	56.0
2012	869	358	41.2	1,457	820	56.3
2013	810	332	41.1	1,482	905	61.1
2014	892	405	45.5	1,452	884	60.9
2015	888	379	42.7	1,493	870	58.4

Six Year Graduation Rates for First Time, Full-Time, First Year Degree-Seeking Student Cohorts by Gender

Fall Cohort	Male			Female		
	N 1st Fall	Graduated within 6 years		N 1st Fall	Graduated within 6 years	
		#	%		#	%
2008	762	463	60.8	1,231	877	71.2
2009	888	581	65.4	1,353	1,007	74.4
2010	767	475	62.1	1,295	969	74.8
2011	904	604	66.9	1,379	1,053	76.4
2012	869	614	70.7	1,457	1,123	77.1
2013	810	545	67.6	1,482	1,210	81.6

Note: Data in all charts is from Fall enrollment at census dates and completions files as reported to IPEDS. Includes degree sweeps and IPEDS exclusions through 10/2019.

A large purple graphic element consisting of a thick horizontal bar at the top and a vertical bar on the right side, forming an L-shape. A white rectangular box with a thin black border is centered within the purple shape, containing the text.

ACADEMIC DEGREE AND CERTIFICATE PROGRAMS

Undergraduate Degree and Certificate Programs - Fall 2019

College of Arts and Humanities

BA Communication Studies
BA Communication Studies Accelerated
BA English: Literature
BA English: Writings
BA History
BA History: American Studies
BA Languages & Cultures: French
BA Languages & Cultures: German
BA Languages & Cultures: Russian
BA Languages & Cultures: Spanish
BA Media & Culture
BA Philosophy
BA Philosophy Accelerated
BA Philosophy: Religious Studies
BA: Theatre
BA Theatre: Design/Tech/Management
BA Theatre: Music Theatre
BA Theatre: Performance
BA Women's and Gender Studies
BFA Graphic & Inter. Design
BFA Studio Arts
Certificate Conflict Transformation Management
Certificate TESL
Teaching Certification English
Teaching Certification French
Teaching Certification German
Teaching Certification Latin
Teaching Certification Russian
Teaching Certification Social Studies - History
Teaching Certification Spanish
Teaching Certification Teacher Ed French
Teaching Certification Teacher Ed German
Teaching Certification Teacher Ed Russian
Teaching Certification Teacher Ed Spanish

School of Music

BM Music: Performance Instrument
BM Music: Performance Jazz
BM Music: Performance Keyboard
BM Music: Performance Voice
BM Music Education: Instrument
BM Music Education: Keyboard
BM Music Education: Voice
BM Music: Elective Studies
BM Music: Elective Studies - Music Therapy
BM Music: History
BM Music: Theory
BM Music: Composition
Teaching Certification Music Education

College of Business and Public Management

BS Accounting
BS Business Management
BS Business Management (DCCC Marple)
BS Business Management (Philadelphia)
BS Criminal Justice
BS Criminal Justice Accelerated
BS Criminal Justice Accelerated (Philadelphia)
BS Economics
BS Finance
BS Geography
BS Geography Accelerated
BS Geography: Environmental
BS Geography: Environmental Accelerated
BS Geography: Geographic Information Systems
BS Geography: Geographic Information Systems Accelerated
BS Geography: Location Analytics
BS International Business
BS Marketing

College of Business and Public Management (cont...)

BS Pre-Business: Accounting
BS Pre-Business: Eco-Finance
BS Pre-Business: Management
BS Pre-Business: Management (DCCC Marple)
BS Pre-Business: Management (Philadelphia)
BS Pre-Business: Marketing
BS Pre-International Business
BS Urban & Environmental Plan
BS Urban & Environmental Plan Accelerated to MS Geography
BS Urban & Environmental Plan Accelerated to MURP

College of Education and Social Work

BSED Biology
BSED Chemistry
BSED Early Grades Prep, PK-4 Education
BSED Early Grades Prep, PK-4 Education Accelerated
BSED Earth-Space Science
BSED Earth-Space Science: Geology
BSED English: Literature
BSED English: Writings
BSED Mathematics
BSED Middle Grades Prep, 4-8 Education
BSED Physics
BSED Special Education: 7-12
BSED Special Education: PK-8
BSW Social Work
BSW Social Work (Philadelphia)
Certificate Education for Sustainability
Teaching Certification Early Childhood Education
Teaching Certification Teacher Ed Social Studies - Geography
Teaching Certification Teacher Ed Social Studies - History
Teaching Certification Teacher Ed Social Studies - Political Science

Undergraduate Degree and Certificate Programs - Fall 2019 (continued)

College of Health Sciences

BA Communication Science & Disorders
BS Environmental Health
BS Exercise Science
BS Exercise Science: Exercise Science Specialist Accelerated
BS Health and Physical Education
BS Health Science: General
BS Health Science: Respiratory Care
BS Health Science: Sport Medicine Concentration
BS Health Science: Sport Medicine Concentration Accelerated
BS Nutrition and Dietetics
BS Nutrition and Dietetics Accelerated
BS Nutrition: Lifestyle Nutrition
BS Nutrition: Sustainable Food Systems Management
BS Pre-Chiropractic
BS Pre-Occupational Therapy
BS Pre-Physical Therapy
BS Public Health
BSN Nursing
BSN Nursing: 2nd Degree
BSN Nursing: RN
BSN Nursing: RN (Philadelphia)
BSN Nursing: RN (DCCC)
Certificate Athletic Training
Pre-Grad Program Certificate

University College

BA Liberal Studies: Arts & Humanities
BS Liberal Studies: Profession
BS Liberal Studies: Science/Math
Certificate Honors Seminar
Undeclared Business
Exploratory Studies
Exploratory Studies Internal Transfer

College of Science and Mathematics

BA Anthropology
BA Mathematics
BA Mathematics Accelerated
BA Political Science: Government and Politics
BA Political Science: International Relations
BA Sociology
BS Biochemistry
BS Biology
BS Biology: Cell & Molecular
BS Biology: Ecology and Conservation
BS Biology: Ecology and Conservation Accelerated
BS Biology: Integrative Accelerated
BS Biology: Marine Science
BS Biology: Medical Lab Science
BS Biology: Microbiology
BS Biomedical Engineering
BS Chemistry
BS Chemistry-Biology

College of Science & Mathematics (cont...)

BS Computer Science
BS Computer Science Accelerated
BS Forensic & Toxicological Chemistry
BS Geoscience: Earth Systems
BS Geoscience: Earth Systems Accelerated
BS Geoscience: Geology
BS Geoscience: Geology Accelerated
BS Mathematics: Actuarial Science
BS Mathematics: Applied & Computational
BS Mathematics: Applied & Computational Accelerated
BS Mathematics: Finance
BS Mathematics: Pure Mathematics
BS Mathematics: Pure Mathematics Accelerated
BS Mathematics: Statistics
BS Mathematics: Statistics Accelerated
BS Pharmaceutical Product Dev
BS Physics
BS Physics-Engineering
BS Psychology
Computer Security CERTIF
Teaching Certification Biology
Teaching Certification Chemistry
Teaching Certification Earth-Space Science
Teaching Certification General Science
Teaching Certification Mathematics
Teaching Certification Physics
Teaching Education General Science

Graduate Degree and Certificate Programs - Fall 2019

College of Business and Public Management

Doctor of Public Administration
Master of Urban and Regional Planning
Master of Urban and Regional Planning - Accelerated
MBA General
MPA Human Resource Management
MPA Nonprofit Administration
MPA Public Administration
MPA Public Administration (Philadelphia)
MPA Public Management
MS Criminal Justice
MS Criminal Justice - Accelerated
MS Criminal Justice (Philadelphia)
MS Criminal Justice (Philadelphia) - Accelerated
MS Geography
MS Geography - Accelerated
MS Human Resource Management
Certificate Administration
Certificate Geographic Information Systems
Certificate Human Resource Management
Certificate Non Profit Administration
Certificate Urban and Regional Planning

School of Music

MM Music Performance
MM Music Performance- Instrumental
MM Music Performance- Organ
MM Music Performance- Piano
MM Music Performance- Vocal
MM Music Performance- Choral
MM Music Performance- Instrumental Conducting
MM Music: Piano Pedagogy
MM Music: Theory & Composition
MM Music Education: Kodaly
MM Music Education: Music Technology

School of Music (cont...)

MM Music Education: Orff-Schulwerk
MM Music Education: Research
MM Music Education: Performance
MM Music: History and Literature
Music Education: Technology
Certificate Kodaly Methodology
Certificate Music Technology
Certificate Orff-Schulwerk
Certificate Piano Pedagogy
Teaching Certification Music Education

College of Education and Social Work

Doctor of Education
Doctor of Education: Higher Education
MED Applied Studies in Teaching and Learning
MED Applied Studies in Teaching and Learning (Kenn)
MED Applied Studies in Teaching and Learning (Wil)
MED Counseling - School
MED Early Childhood Education
MED Reading
MED Reading at Coatsville School District
MED Reading at OJR School Dist
MED Secondary Education
MED Special Education
MED Special Education (online)
MS Clinical Mental Health Counseling
MS Higher Education Policy & Student Affairs
MS Transfer Education & Social Change
MS Transfer Education & Social Change (Philadelphia)
MSW Social Work
MSW Social Work Advanced Standing
MSW Social Work (Philadelphia)
MSW Social Work Advanced Standing (Philadelphia)
Professional Growth Counseling

College of Education and Social Work (cont..)

Professional Growth Reading
Professional Growth Special Education
Certificate Autism
Certificate Education for Sustainability
Certificate Educational Technology
Certificate Entrepreneurial Education
Certificate Gerontology
Certificate Higher Education Policy & Student Affairs
Certificate Literacy
Certificate Literacy Coaching
Certificate of Advanced Graduate Professional Growth
Certificate Professional Counseling Licensure Prep
Certificate Special Education
Certificate Universal Design Learning
Teaching Certification Counseling
Teaching Certification Early Childhood Education
Teaching Certification Early Grades Preparation
Teaching Certification Middle Grades Preparation
Teaching Certification Reading
Teaching Certification Reading (Philadelphia)
Teaching Certification Secondary Education
Teaching Certification Special Education: 7-12
Teaching Certification Special Education 7-12 (Online)
Teaching Certification Special Education 7-12 (Philadelphia)
Teaching Certification Special Education: PK-8
Teaching Certification Special Education: PK-8 (Online)
Teaching Certification Special Education: PK-8 (Philadelphia)

Graduate Degree and Certificate Programs - Fall 2019 (continued)

College of Science and Mathematics

Doctorate of Psychology
MA Mathematics
MA Mathematics Accelerated
MA Mathematics: Math Education
MA Psychology: Clinical
MA Psychology: General
MA Psychology: Industrial/Organizational
MS Applied & Computational Math
MS Applied & Computational Math Accelerated
MS Applied Statistics
MS Applied Statistics Accelerated
MS Applied Statistics: Biostatistics Conc.
MS Applied Statistics: Business & Marketing Analytics Conc.
MS Biology: Non-Thesis
MS Biology: Thesis
MS Biology: Thesis Accelerated
MS Computer Science
MS Computer Science Accelerated
MS Geoscience
MS Geoscience Accelerated
Certificate Applied Statistics
Certificate Clinical Mental Health
Certificate Computer Security
Certificate Industrial/Organizational Psychology
Certificate Information Systems
Certificate Post Master Advanced Study in Applied Statistics
Certificate Web Technology
Teaching Certification Biology
Teaching Certification Chemistry
Teaching Certification Earth-Space Science
Teaching Certification General Science
Teaching Certification Physics

College of Health Sciences

Doctorate of Nursing Practice
MA Speech-Language Pathology
MED Health: School Health
MPH Public Health: Administration
MPH Public Health: Community
MPH Public Health: Environment
MPH Public Health: Integrative
MPH Public Health: Management
MPH Public Health: Nutrition
MS Athletic Training
MS Athletic Training Accelerated
MS Athletic Training - Post Professional Concentration
MS Community Nutrition
MS Community Nutrition Accelerated
MS Community Nutrition - Internship
MS Exercise and Sport Science
MS Exercise and Sport Science - Applied Sport Performance Concentration
MS Exercise and Sport Science - Clinical Exercise Physiology Concentration
MS Exercise and Sport Science - Sport/Exercise Psychology Concentration
MS Health and Physical Education - Sport/Exercise Physiology
MS Physical Education
MSN Nursing
MSN Nursing: Advanced Practice-Adult Gerontology
MSN Nursing: Nurse Educator
Certificate Adapted Physical Education
Certificate Applied Mindfulness
Certificate Emergency Preparedness
Certificate Health Care Management
Certificate Health: Integrative Health
Certificate Post Master Dietetic Intern
Certificate School Nursing
Certificate Sports Management and Athletics

College of Health Sciences (cont...)

Teaching Certificate Health & Physical Education
Teaching Certificate School Nursing

College of Arts and Humanities

MA Communication Studies
MA English
MA History
MA Holocaust and Genocide Studies
MA Languages & Cultures in French
MA Languages & Cultures in German
MA Languages & Cultures in Spanish
MA Philosophy: Applied Ethics
MA Philosophy: Applied Ethics - Accelerated
MA Philosophy: General
MA Philosophy: General - Accelerated
MA TESL
Certificate Business Ethics
Certificate Healthcare Ethics
Certificate Holocaust and Genocide Studies
Certificate Publishing
Certificate TESL
Graduate Certificate Digital Media Marketing
Teaching Certification English
Teaching Certification French
Teaching Certification German
Teaching Certification Latin
Teaching Certification Social Studies - History
Teaching Certification Spanish

Professional and Program Accreditations

West Chester University is accredited by

The Middle States Commission on Higher Education (MSCHE)

Accreditation Board for Engineering and Technology (ABET)

Accreditation Council for Continuing Medical Education (ACCME)

Accreditation Council for Education and Nutrition and Dietetics (ACEND)

American Chemical Society (ACS)

American Orff Schulwerk Association (AOSA)

American Psychological Association Commission on Accreditation (APA)

American Speech-Language-Hearing Association (ASHA)

American Council on Teaching Foreign Languages (ACTFL)- Recognized Programs

Association to Advance Collegiate Schools of Business (AACSB)

Association for Middle Level Education (AMLE)- Recognized Programs

Commission on Accreditation of Allied Health Education Programs (CAAHEP) Pending Renewal

Commission on Accreditation of Athletic Training Education (CAATE)

Council for Accreditation of Counseling and Related Educational Programs (CACREP)

Council For Exceptional Children (CEC)- Recognized Programs

Council on Education for Public Health (CEPH)

Council on Social Work Education (CSWE)

Commission on Collegiate Nursing Education (CCNE)

Committee on Accreditation for Respiratory Care (CoARC)

Professional and Program Accreditations (Continued)

Forensic Science Education Program Accreditation Communication (FEPAC)

International Literacy Association (ILA)- Recognized Programs

Middle States Commission on higher Education (MSCHE)

National Association of Schools of Music (NASM)

National Association for the Education of Young Children (NAEYC) - Recognized Programs

National Association of Schools of Art and Design (NASAD)

National Association of Schools of Theatre (NAST)

National Council for Accreditation of Teacher Education (NCATE)

National Council for Social Studies (NCSS) - Recognized Programs

National Council of Teachers of English (NCTE) - Recognized Programs

National Council of Teachers of Mathematics (NCTM) - Recognized Programs

National Science Teachers Association (NSTA) - Recognized Programs

National Environmental Health Science and Protection Accreditation Council (EHAC)

Network of Schools of Public Policy, Affairs, and Administration (NASPAA)

Organization of American Kodaly Educators (OAKE)

Society of Health and Physical Educators (SHAPE) - Recognized Programs



DEGREES CONFERRED

Degrees Conferred in 2017-18 and 2018-19

Counts include Baccalaureate (Primary and Secondary Major), Master's, and Doctoral degrees.

College of Art & Humanities

Art & Design:	2017-18	2018-19
Graphic & Inter. Design BFA	24	26
Studio Arts BFA	8	14
Art & Design Undergraduate Total	32	40
Art & Design Total	32	40

Communication Studies:

Communication Studies BA	202	182
Communication Studies Undergraduate Total	202	182
Communication Studies MA (Philadelphia)	3	3
Communication Studies MA	6	6
Communication Studies Graduate Total	9	9
Communication Studies Total	211	191

English:

English BA: Literature	21	26
English BA: Writings	46	44
English Undergraduate Total	67	70
English MA	19	17
English Graduate Total	19	17
English Total	86	87

Foreign Languages:

BA Languages & Culture, French	1	5
BA Languages & Culture, Russian	3	3
BA Languages & Cultures, Spanish	7	14
BA Languages & Cultures, German	2	4
French BA	1	2
German BA	1	0
Spanish BA	6	3
Foreign Languages Undergraduate Total	21	31

Degrees Conferred in 2017-18 and 2018-19

Counts include Baccalaureate (Primary and Secondary Major), Master's, and Doctoral degrees.

Foreign Languages (Cont'd...):	2017-18	2018-19
French MA	0	1
Lang & Cultures MA, French	1	2
Lang & Cultures MA, Spanish	2	5
Spanish MA	2	1
Foreign Languages Graduate Total	5	9
Foreign Languages Total	26	40

History:

History BA	54	50
History Undergraduate Total	54	50
History MA	6	6
History MED	0	1
History Graduate Total	6	7
History Total	60	57

Holocaust and Genocide Studies:

Holocaust & Genocide Studies MA	6	3
Holocaust and Genocide Graduate Total	6	3
Holocaust and Genocide Studies Total	6	3

Philosophy: Religious Studies BA

Philosophy BA	9	7
Philosophy: Religious Studies BA	1	1
B.A. Philosophy Accelerated	1	1
Philosophy Undergraduate Total	11	9
Philosophy MA: General	3	3
Philosophy Graduate Total	3	3
Philosophy Total	14	12

Degrees Conferred in 2017-18 and 2018-19

Counts include Baccalaureate (Primary and Secondary Major), Master's, and Doctoral degrees.

Teach Eng as a Second Language:	2017-18	2018-19
TESL MA	9	9
Teach Eng as a Second Language Graduate Total	9	9
Teach Eng as a Second Lang Total	9	9

Women's and Gender Studies:		
Women's and Gender Studies BA	30	10
Women's and Gender Studies Undergraduate Total	30	10
Women's and Gender Studies Total	30	10

Theatre Arts:		
Theatre: BA	5	8
Theatre: Design/Production BA	3	1
Theatre: Music Theatre BA	8	9
Theatre: Performance BA	3	2
Theatre Arts Undergraduate Total	19	20
Theatre Arts Total	19	20
College of Arts and Humanities Undergraduate Total	436	412
College of Arts and Humanities Graduate Total	57	57
College of Art & Humanities Total	493	469

School of Music

Applied Music:		
Music: Performance Instr BM	10	13
Music: Performance Jazz BM	2	1
Music: Performance Keyboard BM	5	6
Music: Performance Voice BM	2	4
Applied Music Undergraduate Total	19	24

Degrees Conferred in 2017-18 and 2018-19

Counts include Baccalaureate (Primary and Secondary Major), Master's, and Doctoral degrees.

Applied Music (Cont'd...):	2017-18	2018-19
Music Performance MM	2	8
Music: Piano Pedagogy MM	0	3
Music Performance- MM Choral Cond.	0	1
Music Performance- MM Instrument	0	1
Music Performance- MM Instrumental Cond.	3	3
Music Perform-MM Piano	0	2
Applied Music Graduate Total	5	18
Applied Music Total	24	42
Music Education:		
Music Educ: Instrument BM	23	31
Music Educ: Keyboard BM	1	6
Music Educ: Voice BM	5	16
Music Education Undergraduate Total	29	53
Music Education MM: Research	2	2
Music Education MM: Performance	5	0
Music Education MM: Kodaly	1	0
Music Education: Technology	3	2
Music Education Graduate Total	11	4
Music Education Total	40	57
Music Theory, History and Composition:		
Music: Elective Studies BM	3	6
Music: Composition BM	5	8
Music: History BM	2	0
Music: Theory BM	0	3
Music, Theory, History and Comp Undergraduate Total	10	17
Music: History and Literature	0	1
Music: Theory & Composition MM	1	3
Music, Theory, History and Composition Graduate Total	1	4
Music Theory, History and Composition Total	11	21

Degrees Conferred in 2017-18 and 2018-19

Counts include Baccalaureate (Primary and Secondary Major), Master's, and Doctoral degrees.

School of Music (Cont'd...)	2017-18	2018-19
School of Music Undergraduate Total	58	94
School of Music Graduate Total	17	26
School of Music Total	75	120

College of Business & Public Management

Criminal Justice:

Criminal Justice BS	111	110
Criminal Justice BS (Phila)	8	9
Criminal Justice BS Accel	14	17
Criminal Justice BS Phila Accel	2	0
Criminal Justice Undergraduate Total	135	136
Criminal Justice MS Accelerate	5	12
Criminal Justice MS	10	14
Criminal Justice MS (Phila)	10	4
Criminal Justice Graduate Total	25	30
Criminal Justice Total	160	166

Geography & Planning:

Geography BA	2	1
Geography BA Accelerated	0	2
Geography: Environmental	4	0
Geography: GIS BA	2	1
Geography: GIS Accelerated	1	0
Geography: Urban/Regional PI BA	0	2
Urban & Environmental Plan BS	12	5
Urban & Environmental Plan BS Accelerated to MS Geography	0	6
Geography & Planning Undergraduate Total	21	17

Degrees Conferred in 2017-18 and 2018-19

Counts include Baccalaureate (Primary and Secondary Major), Master's, and Doctoral degrees.

	2017-18	2018-19
Geography & Planning (Cont'd...):		
Geography MS	13	8
Master of Urban and Regional Planning	1	5
Geography & Planning Graduate Total	14	13
Geography & Planning Total	35	30
Public Policy and Administration:		
Human Resource Mgmt. MPA	4	1
Nonprofit Administration MPA	4	4
Public Administration MPA	41	27
Public Policy and Administration Graduate Total	49	32
Doctor of Public Administration	6	16
Public Policy and Administration Doctorate Total	6	16
Public Policy and Administration Total	55	48
Accounting:		
Accounting BS	147	130
Accounting Undergraduate Total	147	130
Accounting Total	147	130
Economics:		
Economics BS	79	89
Finance BS	220	238
Economics Undergraduate Total	299	327
Economics Total	299	327
Management:		
Business Management BS	240	233
International Business BS	7	12
Management Undergraduate Total	247	245

Degrees Conferred in 2017-18 and 2018-19

Counts include Baccalaureate (Primary and Secondary Major), Master's, and Doctoral degrees.

Management (Cont'd...):	2017-18	2018-19
Human Resource Management MS	7	9
Management Graduate Total	7	9
Management Total	254	254

Marketing:		
Marketing BS	219	246
Marketing Undergraduate Total	219	246
Marketing Total	219	246

MBA Program:		
Bus Admin: General MBA	132	201
MBA Program Graduate Total	132	201
MBA Program Total	132	201
College of Business & Public Management Undergraduate Total	1,068	1,101
College of Business & Public Management Graduate Total	227	285
College of Business & Public Management Doctorate Total	6	16
College of Business & Public Management Total	1,301	1,402

College of Education & Social Work

Counselor Education:		
Couns: Higher Ed/Student Affairs MS	30	23
Counseling: School MED	31	32
MS Clinical Mental Health Counseling	11	0
Counselor Education Graduate Total	72	55
Counselor Education Total	72	55

Early and Middle Grades Education:

Early Grades Prep, PK-4 BSED	206	220
Middle Grades Prep, 4-8 BSED	35	26
Early and Middle Grades Ed. Undergraduate Total	241	246

Degrees Conferred in 2017-18 and 2018-19

Counts include Baccalaureate (Primary and Secondary Major), Master's, and Doctoral degrees.

Early and Middle Grades Education (Cont'd...):	2017-18	2018-19
Applied Studies Teach/Lear MED	11	13
Early Childhood Education MED	17	11
Early and Middle Grades Ed. Graduate Total	28	24
Early and Middle Grades Ed. Total	269	270

Literacy:

Literacy MED	28	31
Literacy MED at OJR School Dist	10	0
Literacy Graduate Total	38	31
Literacy Total	38	31

Educational Foundations and Policy Studies:

Secondary Education MED	2	1
MS Higher Education Policy & Student Affairs	0	28
MS Transf Edu & Soc Change	8	7
Educational Foundations and Policy Studies Graduate Total	10	36
Educational Foundations and Policy Studies Total	10	36

Secondary Education:

Biology BSED	5	5
Chemistry BSED	0	4
Earth-Space Science BSED	4	5
English: Literature BSED	13	8
English: Writings BSED	8	12
Mathematics BSED	16	11
Physics BSED	2	0
Secondary Education Undergraduate Total	48	45
Secondary Education Total	48	45

Degrees Conferred in 2017-18 and 2018-19

Counts include Baccalaureate (Primary and Secondary Major), Master's, and Doctoral degrees.

Special Education:	2017-18	2018-19
Special Education: 7-12 BSED	13	8
Special Education: PK-8 BSED	109	127
Special Education Undergraduate Total	122	135
Special Education MED	9	7
Special Education MED (online)	43	46
Special Education MED (Phila)	1	0
Special Education Graduate Total	53	53
Special Education Total	175	188
Social Work:		
Social Work BSW	48	46
Social Work BSW (Phila)	17	23
Social Work Undergraduate Total	65	69
Social Work MSW	40	44
Social Work MSW (Phila)	35	36
Social Work MSW Advanced Stand	17	19
Social Work MSW, Advanced Stand, Phila	10	6
Social Work Graduate Total	102	105
Social Work Total	167	174
Education Policy and Planning:		
Doctoral of Education	14	0
Education Policy and Planning Doctoral Total	14	0
Education Policy and Planning Total	14	0
College of Education & Social Work Undergraduate Total	476	495
College of Education & Social Work Graduate Total	303	304
College of Education & Social Work Doctoral Total	14	0
College of Education & Social Work Total	793	799

Degrees Conferred in 2017-18 and 2018-19

Counts include Baccalaureate (Primary and Secondary Major), Master's, and Doctoral degrees.

College of Health Sciences

Communicative Disorders:	2017-18	2018-19
Communication Sci & Disord BA	98	80
Communicative Disorders Undergraduate Total	98	80
Speech-Language Pathology MA	27	29
Communicative Disorders Graduate Total	27	29
Communicative Disorders Total	125	109

Kinesiology:

Exercise Science BS	58	54
Health & Physical Educ BS	28	26
Pre-Chiropractic BS	1	4
Pre-Occupational Therapy BS	74	80
Pre-Physical Therapy BS	62	72
Kinesiology Undergraduate Total	223	236
MS in Ex Sport Phys: Athletic Training	10	3
MS in Exercise/Sport Science	12	14
Kinesiology Graduate Total	22	17
Kinesiology Total	245	253

Nutrition:

Nutrition and Dietetics BS	118	89
Nutrition and Dietetics BS Accel	17	30
Nutrition Undergraduate Total	135	119
Public Health MPH: Nutrition	9	2
Community Nutrition MS	22	12
Community Nutrition MS Acceler	1	15
Nutrition Graduate Total	32	29
Nutrition Total	167	148

Degrees Conferred in 2017-18 and 2018-19

Counts include Baccalaureate (Primary and Secondary Major), Master's, and Doctoral degrees.

Sports Medicine Department:	2017-18	2018-19
Athletic Training BS	29	46
Sports Medicine Department Undergraduate Total	29	46
Athletic Training MS	0	12
Athletic Training Post-Professional Concentration MS	0	7
Sports Medicine Department Graduate Total	0	19
Sports Medicine Department Total	29	65
Nursing:		
Nursing BSN	62	47
Nursing BSN: 2nd degree	32	33
Nursing BSN: RN	60	61
Nursing BSN: RN (Phila)	36	25
Nursing Undergraduate Total	190	166
Nursing MSN	1	0
Nursing MSN: Nurse Educator	7	7
Nursing MSN: APRN/Adult Gerontology	4	0
Nursing Graduate Total	12	7
Doctor of Nursing Practice	20	10
Nursing Doctorate Total	20	10
Nursing Total	222	183
Health:		
Environmental Health BS	10	21
Health Sci: General BS	18	29
Health Sci: Respiratory Care BS	24	27
Public Health	73	70
Health Undergraduate Total	125	147

Degrees Conferred in 2017-18 and 2018-19

Counts include Baccalaureate (Primary and Secondary Major), Master's, and Doctoral degrees.

Health (Cont'd...):	2017-18	2018-19
Health: School Health MED	5	5
Public Health MPH: Community	31	24
Public Health MPH: Environment	7	7
Public Health MPH: Integrative	1	0
Public Health MPH: Management	15	29
Public Health MPH: Admin	1	0
Health Graduate Total	60	65
Health Total	185	212
College of Health Sciences Undergraduate Total	800	794
College of Health Sciences Graduate Total	153	166
College of Health Sciences Doctorate Total	20	10
College of Health Sciences Total	973	970

College of Sciences & Mathematics

Anthropology & Sociology:

Anthropology BA	8	11
Sociology BA	27	17
Anthropology & Sociology Undergraduate Total	35	28
Anthropology & Sociology Total	35	28

Biology:

Biology BA	1	0
Biology BS	49	52
Biology: Cell & Molecular BS	43	55
Biology: Ecology/Conserv BS	10	12
Biology: Marine Science	5	7
Biology: Microbiology BS	14	11
Biology: Medical Lab Sciences BS	4	1
Biology: Integ, Accel BS	2	1
Biology Undergraduate Total	128	139

Degrees Conferred in 2017-18 and 2018-19

Counts include Baccalaureate (Primary and Secondary Major), Master's, and Doctoral degrees.

Biology (Cont'd...):	2017-18	2018-19
Biology: Thesis MS	3	0
Biology MS	7	5
Biology Graduate Total	10	5
Biology Total	138	144

Chemistry:		
Biochemistry BS	1	2
Chemistry BS	9	19
Chemistry-Biology BS	12	18
Forensic & Toxicological Chemistry BS	7	11
Chemistry Undergraduate Total	29	50
Chemistry Total	29	50

Computer Science:		
Computer Science BS	72	91
Computer Science, Accelerated BS	0	10
Computer Science Undergraduate Total	72	101
Computer Science MS	8	11
Computer Science Graduate Total	8	11
Computer Science Total	80	112

Earth & Space Sciences:		
Geoscience: Earth Systems BS	8	7
Geoscience: Geology BS	15	9
Geoscience: Geology Accelerated	3	5
Geoscience: Earth Systems, Accelerated	2	3
Earth & Space Undergraduate Total	28	24
Geoscience MS	3	14
Geoscience MS, Accelerated	0	3
Earth & Space Graduate Total	3	17
Earth & Space Total	31	41

Degrees Conferred in 2017-18 and 2018-19

Counts include Baccalaureate (Primary and Secondary Major), Master's, and Doctoral degrees.

	2017-18	2018-19
Mathematics:		
Mathematics BA	2	1
Mathematics: Actuarial Sci BS	15	12
Mathematics: Computational BS, Accelerated	2	0
Mathematics: Finance BS	3	7
Mathematics: Applied & Comp BS	3	1
Mathematics: Pure Mathematics	2	5
Mathematics: Pure Mathematics, Accelerated	1	0
Mathematics: Statistics BS	9	2
Mathematics: Statistics BS, Accelerated	1	2
Mathematics Undergraduate Total	38	30
Applied Statistics MS	27	30
Applied Statistics MS, Accelerated	0	1
Mathematics MA	5	6
Applied & Comp Math MS	2	3
Applied & Comp Math MS, Accelerated	0	1
Mathematics Graduate Total	34	41
Mathematics Total	72	71
Pharmaceutical Product Development:		
Pharmaceutical Product Dev BS	14	18
Pharmaceutical Product Development Undergraduate Total	14	18
Pharmaceutical Product Development Total	14	18
Physics:		
Physics BS	13	6
Physics-Engineering BS	0	6
Physics Undergraduate Total	13	12
Physics Total	13	12

Degrees Conferred in 2017-18 and 2018-19

Counts include Baccalaureate (Primary and Secondary Major), Master's, and Doctoral degrees.

Political Science:	2017-18	2018-19
Political Science: Applied Public Policy BA	4	4
Political Science : International Relations BA	21	20
Political Science: Gov. and Pol.	33	32
Political Science Undergraduate Total	58	56
Political Science Total	58	56

Psychology:		
Psychology BA	248	225
Psychology Undergraduate Total	248	225
Psychology: Clinical MA	18	2
Psychology: General MA	5	11
Psychology: Industrial/Organizational MA	13	11
Psychology Graduate Total	36	24
Psychology Total	284	249
College of Science & Mathematics Undergraduate Total	663	683
College of Science & Mathematics Graduate Total	91	98
College of Sciences & Mathematics Total	754	781

University College

Liberal Studies Program:		
Liberal Studies: Arts & Humanities BA	12	19
Liberal Studies: Science/Math BS	12	13
Liberal Studies Program Undergraduate Total	24	32
Liberal Studies Program Total	24	32

Degrees Conferred in 2017-18 and 2018-19

Counts include Baccalaureate (Primary and Secondary Major), Master's, and Doctoral degrees.

Professional Studies Program:	2017-18	2018-19
Liberal Studies: Profession BS	147	154
Professional Studies Program Undergraduate Total	147	154
Professional Studies Program Total	147	154
University College Undergraduate Total	171	186
University College Graduate Total	0	0
University College Total	171	186
University Undergraduate Total	3,672	3,765
University Graduate Total	848	936
University Doctorate Total	40	26
University Total	4,560	4,727

A large purple L-shaped graphic element is positioned on the right side of the page, partially overlapping the white text box.

TUITION & FEES

Tuition and Fees by Semester

Tuition Category	2014-15	2015-16	2016-17	2017-18	2018-19	2019-20
Undergraduate Tuition						
Full-Time In-State	\$ 3,410.00	\$ 3,530.00	\$ 3,619.00	\$ 3,746.00	\$ 3,858.00	\$ 3,858.00
Full-Time Out-of-State	\$ 8,525.00	\$ 8,825.00	\$ 9,048.00	\$ 9,365.00	\$ 9,645.00	\$ 9,645.00
Per Credit In-State	\$ 284.00	\$ 294.00	\$ 302.00	\$ 312.00	\$ 322.00	\$ 322.00
Per Credit Out-of-State	\$ 710.00	\$ 735.00	\$ 754.00	\$ 780.00	\$ 805.00	\$ 805.00
Undergraduate Fees						
Full-Time In-State	\$ 1,161.90	\$ 1,200.78	\$ 1,241.20	\$ 1,309.33	\$ 1,347.88	\$ 1,352.57
Full-Time Out-of-State	\$ 1,271.90	\$ 1,314.78	\$ 1,358.20	\$ 1,430.33	\$ 1,472.88	\$ 1,477.57
Per Credit In-State	\$ 97.24	\$ 100.90	\$ 103.76	\$ 109.77	\$ 112.41	\$ 112.80
Per Credit Out-of-State	\$ 106.24	\$ 109.90	\$ 113.76	\$ 119.77	\$ 122.41	\$ 122.80
Graduate Tuition						
Full-Time In-State	\$ 4,086.00	\$ 4,230.00	\$ 4,347.00	\$ 4,500.00	\$ 4,644.00	\$ 4,644.00
Full-Time Out-of-State	\$ 6,129.00	\$ 6,345.00	\$ 6,525.00	\$ 6,750.00	\$ 6,966.00	\$ 6,966.00
Per Credit In-State	\$ 454.00	\$ 470.00	\$ 483.00	\$ 500.00	\$ 516.00	\$ 516.00
Per Credit Out-of-State	\$ 681.00	\$ 705.00	\$ 725.00	\$ 750.00	\$ 774.00	\$ 774.00
Graduate Fees*						
Full-Time In-State	\$ 1,115.25	\$ 1,156.13	\$ 1,199.55	\$ 1,479.65	\$ 1,521.25	\$ 1,525.94
Full-Time Out-of-State	\$ 1,223.25	\$ 1,264.13	\$ 1,307.55	\$ 1,587.65	\$ 1,629.25	\$ 1,633.94
Per Credit In-State	\$ 110.78	\$ 114.75	\$ 119.05	\$ 149.79	\$ 153.94	\$ 154.46
Per Credit Out-of-State	\$ 122.78	\$ 126.75	\$ 131.05	\$ 161.79	\$ 165.94	\$ 182.77
Residence Halls						
Meal Plan**	\$ 1,293.00	\$ 1,326.57	\$ 1,396.54	\$ 1,471.00	\$ 1,489.00	\$ 1,489.00

*For information about special graduate program rates, and tuition & fees for Doctoral and Philadelphia campus programs please visit https://wcupa.edu/_information/AFA/Fiscal/Bursar/newStudentsFallSpringGrad.aspx .

**14 Meals per week + \$250 Flex Dollars.

For detail information on meal plans https://wcupa.edu/_information/AFA/Fiscal/Bursar/FallSpringRoomBoard.aspx



LIBRARY RESOURCES

Library Statistics

FY 2015-2016 through 2018-2019

Holdings	2015-2016	2016-2017	2017-2018	2018-2019	One Year Difference
Library Holdings					
Volumes	737,705	719,762	740,365	715,684	-24,681
Microforms	768,407	768,443	193,476	153,690	-39,786
E-Books	1,011,265	1,011,585	1,068,805	1,184,874	116,069
Audio/Video units*	834,616	1,098,632	46,695	40,952	-5,743
Circulation (General & Reserve)	58,402	51,364	30,385	26,567	-3,818
Holdings Total	3,418,006	3,400,916	2,127,742	2,177,077	49,335
Total FTE Staff (includes student assistants)	47.87	47.00	48.00	48.00	0.00

*Includes tapes, CDs, DVDs

Other Library Materials	2016-2017	2017-2018	2018-2019
Items Digitized by WCU Library	10,077	48,016	48,016
Digital Art Images	N/A	N/A	N/A
Digital Pamphlets, Reports, etc.	N/A	N/A	N/A
Digital Manuscript Pages	N/A	N/A	N/A

For questions /comments or recommendations for other data to include in the Fact Book, please contact Nilima Inamdar, Office of Institutional Research, WCU, 887, Matlack Street, West Chester PA 19381. Email: ninamdar@wcupa.edu Phone: 610-436-2456.