

Elon University Greenhouse Gas (GHG) Emissions Inventory FY 2021



Methodology

- Follow GHG Protocol standards, the global standard for greenhouse gas (GHG) accounting
 - World Resources Institute (WRI) and World Business Council for Sustainable Development (WBCSD)
- Utilize online tool - Sustainability Indicator Management & Analysis Platform (SIMAP)
 - Provided through University of New Hampshire Sustainability Institute
- Standard Operating Procedures developed at Elon over several years, updated each year

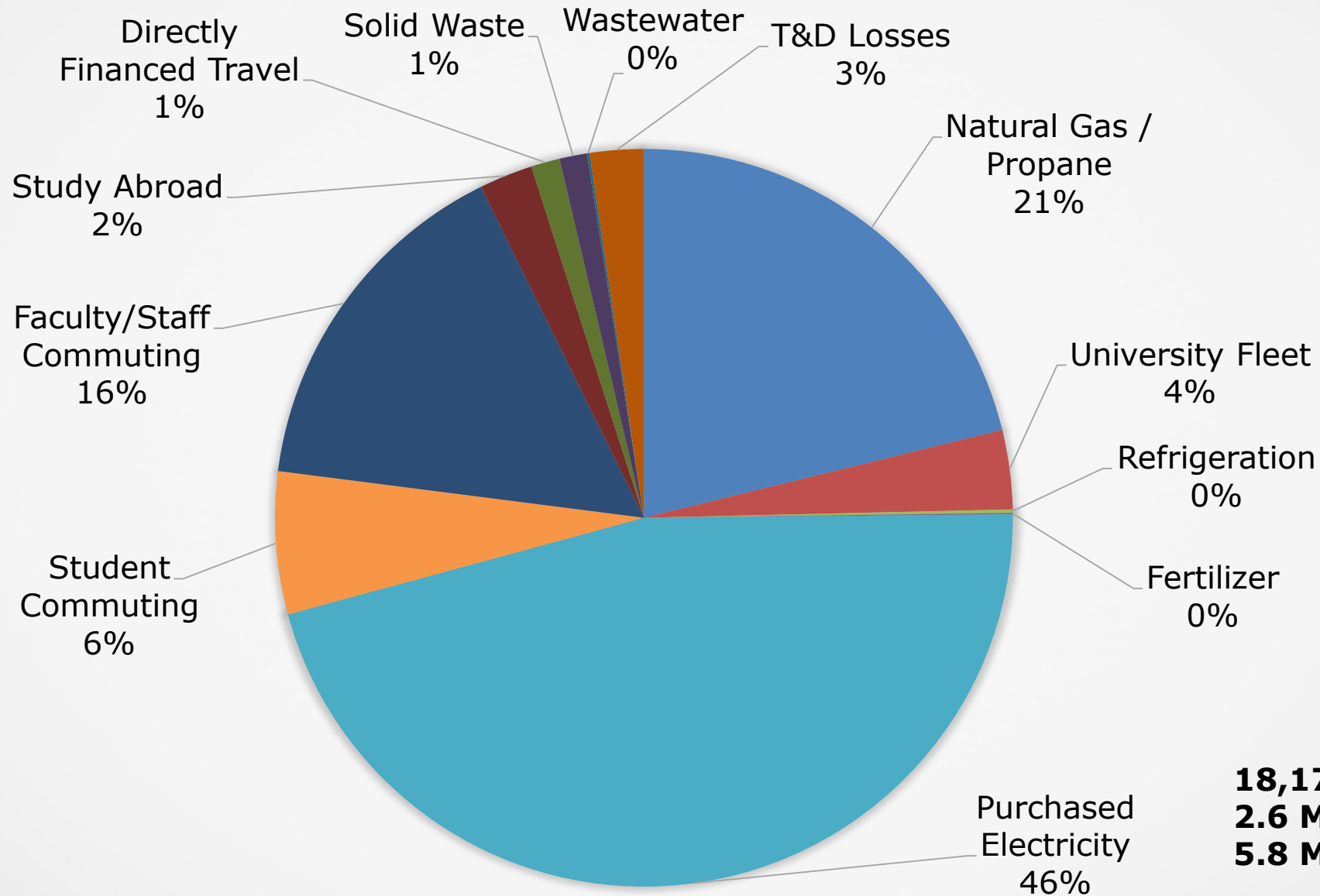
Data Collected

- Scope 1
 - Natural gas
 - Propane
 - Gasoline (University Fleet)
 - Diesel fuel (University Fleet)
 - Bio-diesel (University Fleet)
 - Fertilizer
 - Refrigerants
- Scope 2
 - Purchased Electricity
 - REC purchases (if applicable)
- Scope 3
 - Directly Financed Travel
 - Athletic team travel
 - Faculty & staff business travel
 - Faculty, staff and student commuter travel
 - Study abroad
 - Solid waste
 - Wastewater
- Sinks
 - Yard waste compost
 - Verified carbon offsets

GHG Emissions FY 2021

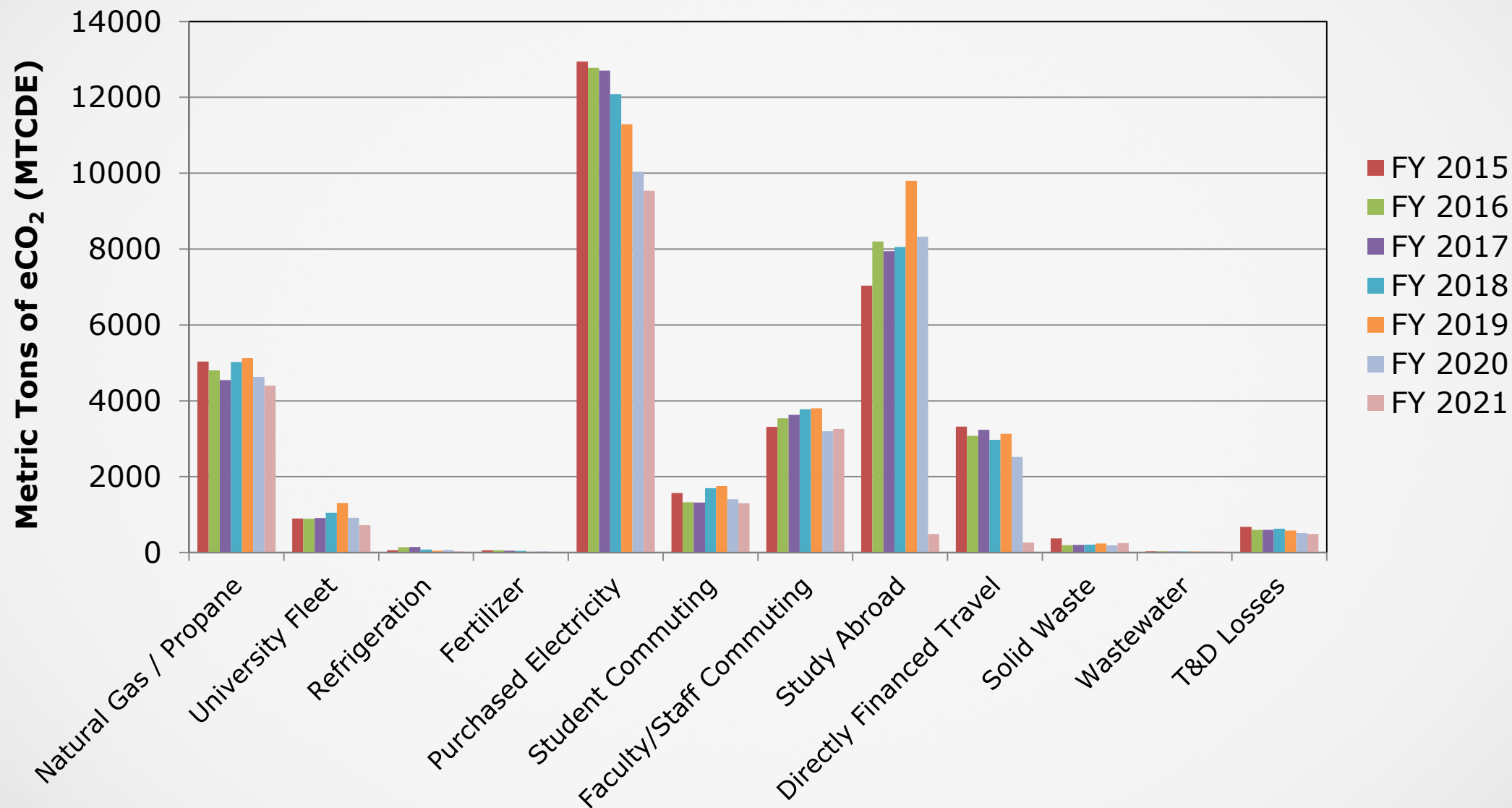
- **Market-Based,** metric tons of carbon dioxide equivalent (MTCDE)
 - Scope 1 5,162 (Natural Gas, University Fleet)
 - Scope 2 9,538 (Purchased Electricity)
 - Scope 3 6,069 (Study Abroad, Commuting, Other Travel)
 - Gross Total 20,769
 - Offsets -2,549 (Verified carbon offsets)
 - Compost -42 (Yard waste composting)
 - **NET Total** **18,178**

GHG Emissions FY 2021



18,178 Net MTCDE
2.6 MTCDE/FTE Student
5.8 MTCDE/1,000 ft²

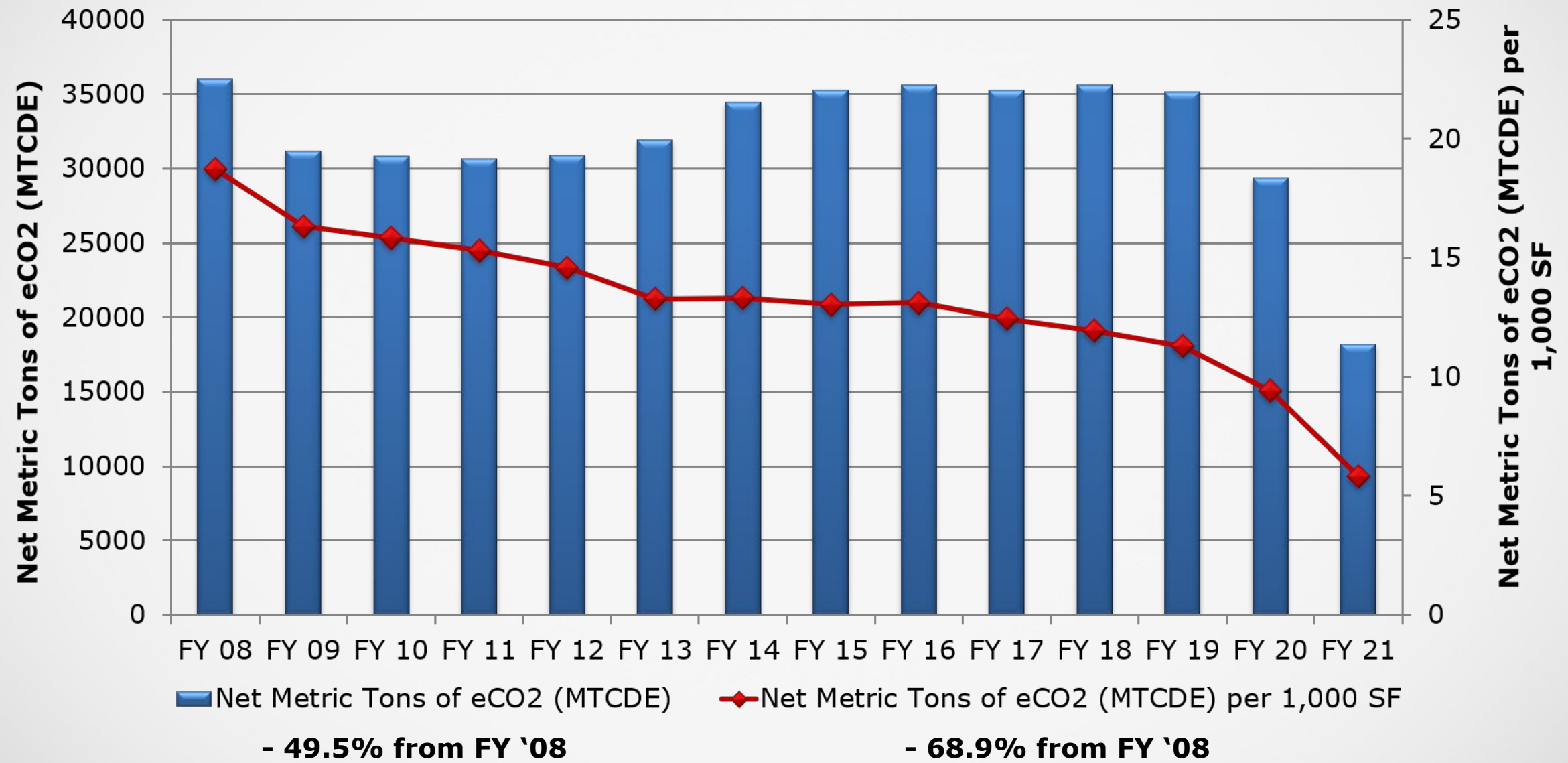
GHG Emission Comparison FY 2015 – FY 2021



Key Campus Metrics FY 2008 to FY 2021

- Square Footage
 - 1,197,028 SF increase
 - 62% increase
- FTE Students
 - 1659 student increase
 - 31% increase

GHG Emission Comparison



GHG Emission Comparison

