

**Elon University  
Greenhouse Gas (GHG)  
Emissions Inventory FY 2023**



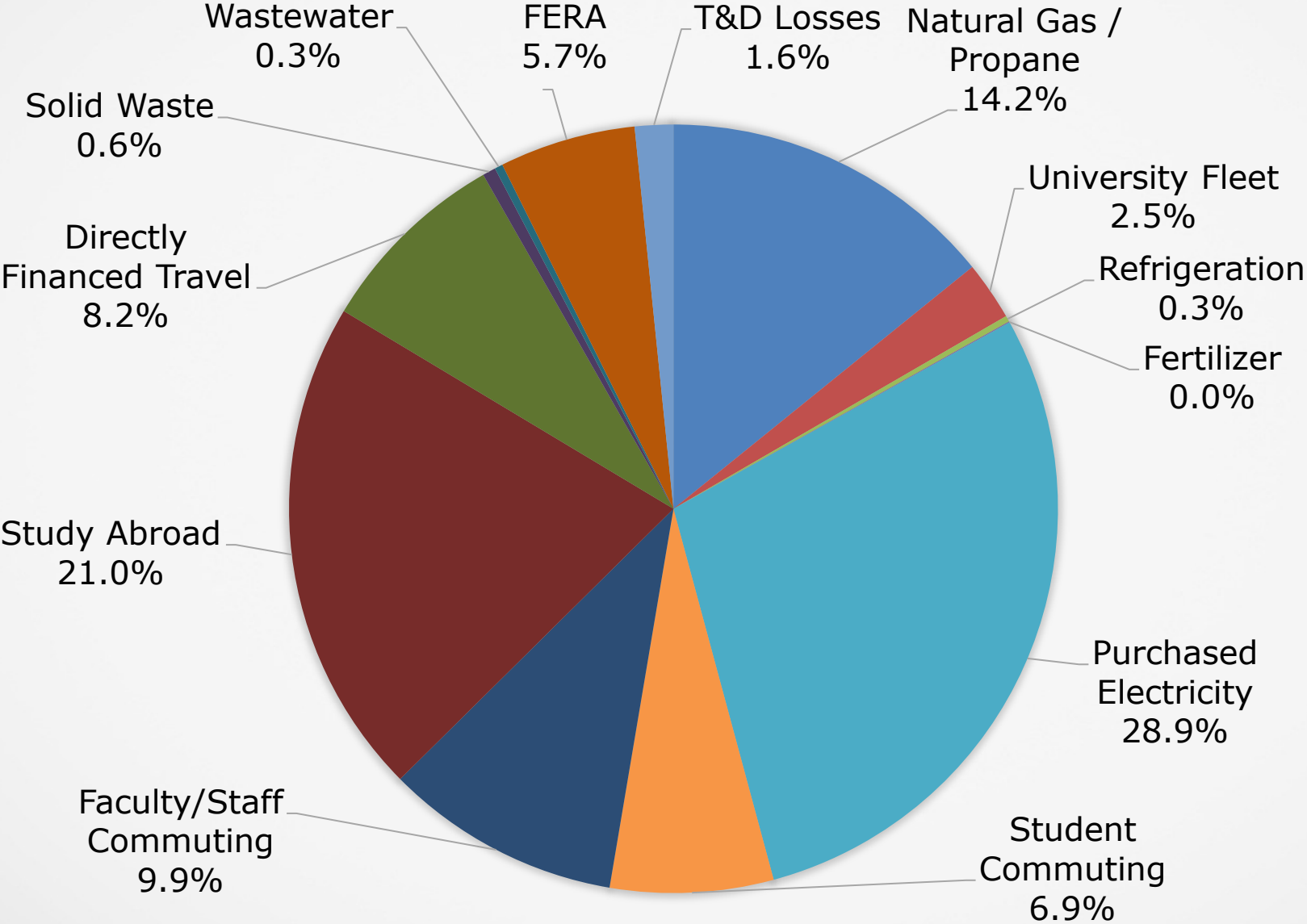
# Data Collected

- Scope 1
  - Natural gas
  - Propane
  - Gasoline (University Fleet)
  - Diesel fuel (University Fleet)
  - Bio-diesel (University Fleet)
  - Fertilizer
  - Refrigerants
- Scope 2
  - Purchased Electricity
  - REC purchases (if applicable)
- Scope 3
  - Directly Financed Travel
    - Athletic team travel
    - Faculty & staff business travel
  - Faculty, staff and student commuter travel
  - Study abroad
  - Solid waste
  - Wastewater
- Sinks
  - Yard waste compost
  - Verified carbon offsets

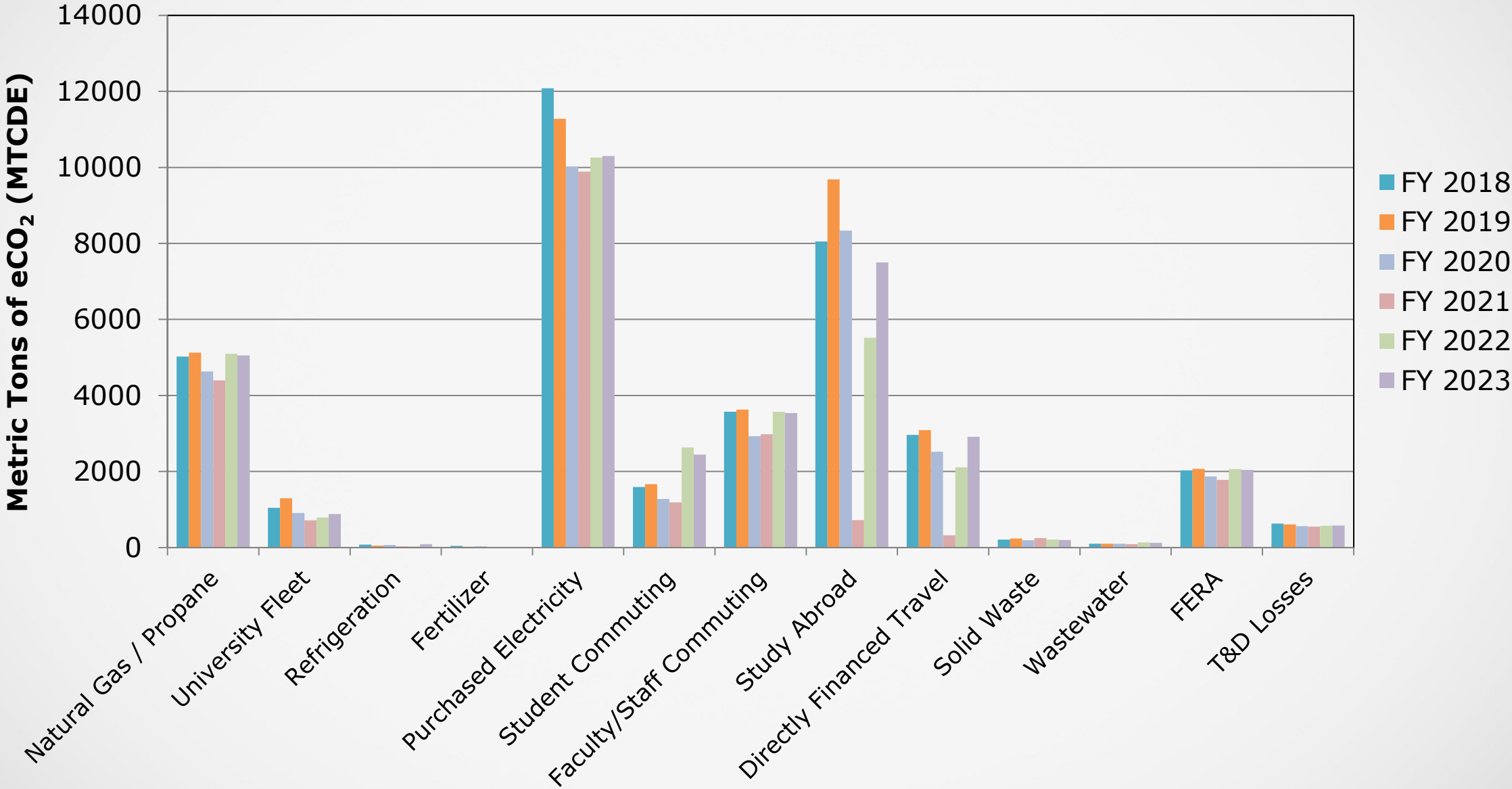
# GHG Emissions FY 2023

- **Market-Based**, metric tons of carbon dioxide equivalent (MTCDE)
  - Scope 1           6,041           (Natural Gas, University Fleet)
  - Scope 2           10,297           (Purchased Electricity)
  - Scope 3           19,335           (Study Abroad, Commuting, Other Travel)
  - Gross Total       35,673
  - Offsets           -7,722           (Verified carbon offsets)
  - Compost           -44           (Yard waste composting)
  - **NET Total**        **27,907**

# GHG Emissions FY 2023



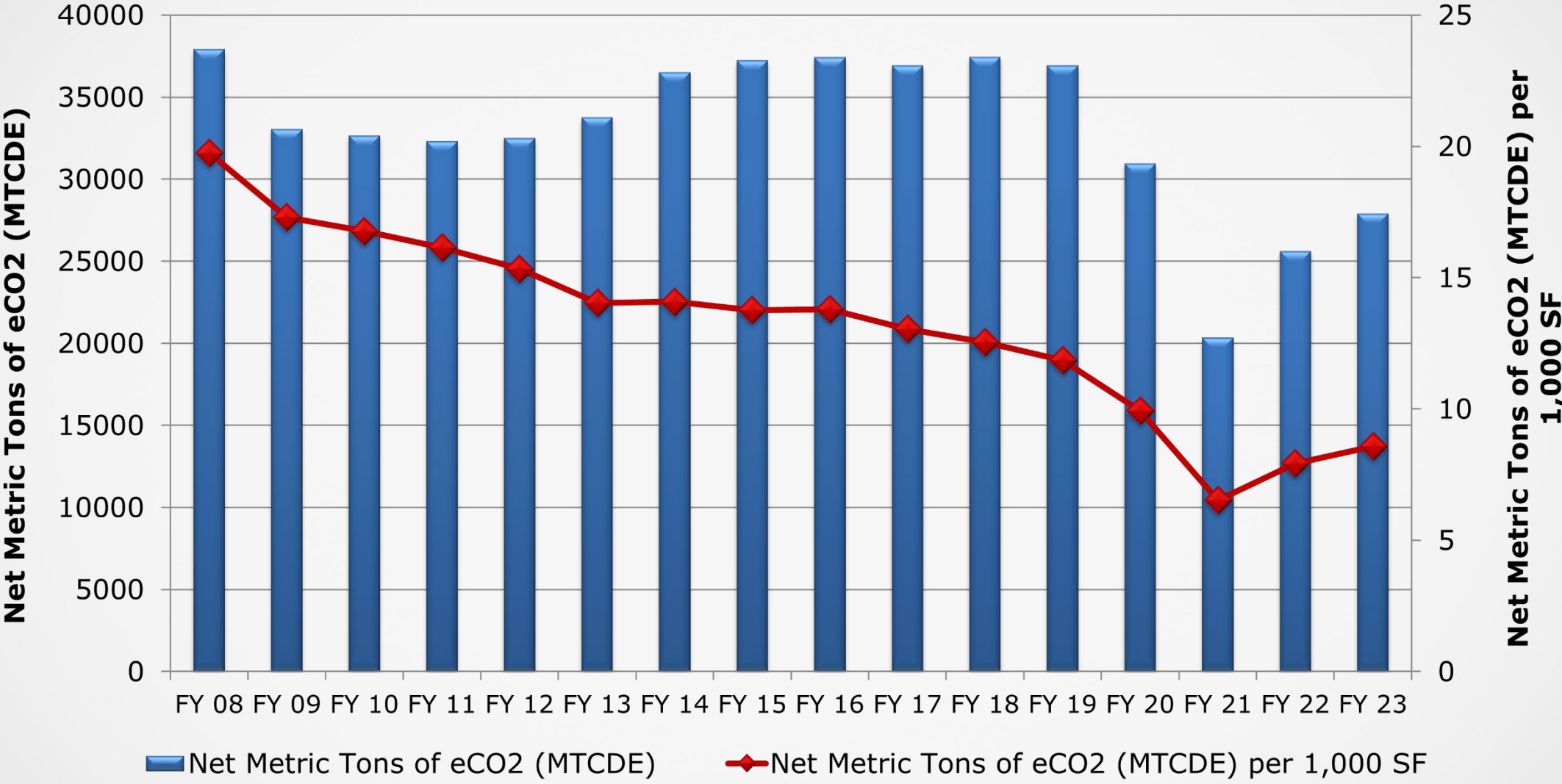
# GHG Emission Comparison FY 2018 – FY 2023



# Key Campus Metrics FY 2008 to FY 2023

- Square Footage
  - 1,335,619 SF increase
  - 69% increase
- FTE Students
  - 1692 student increase
  - 32% increase

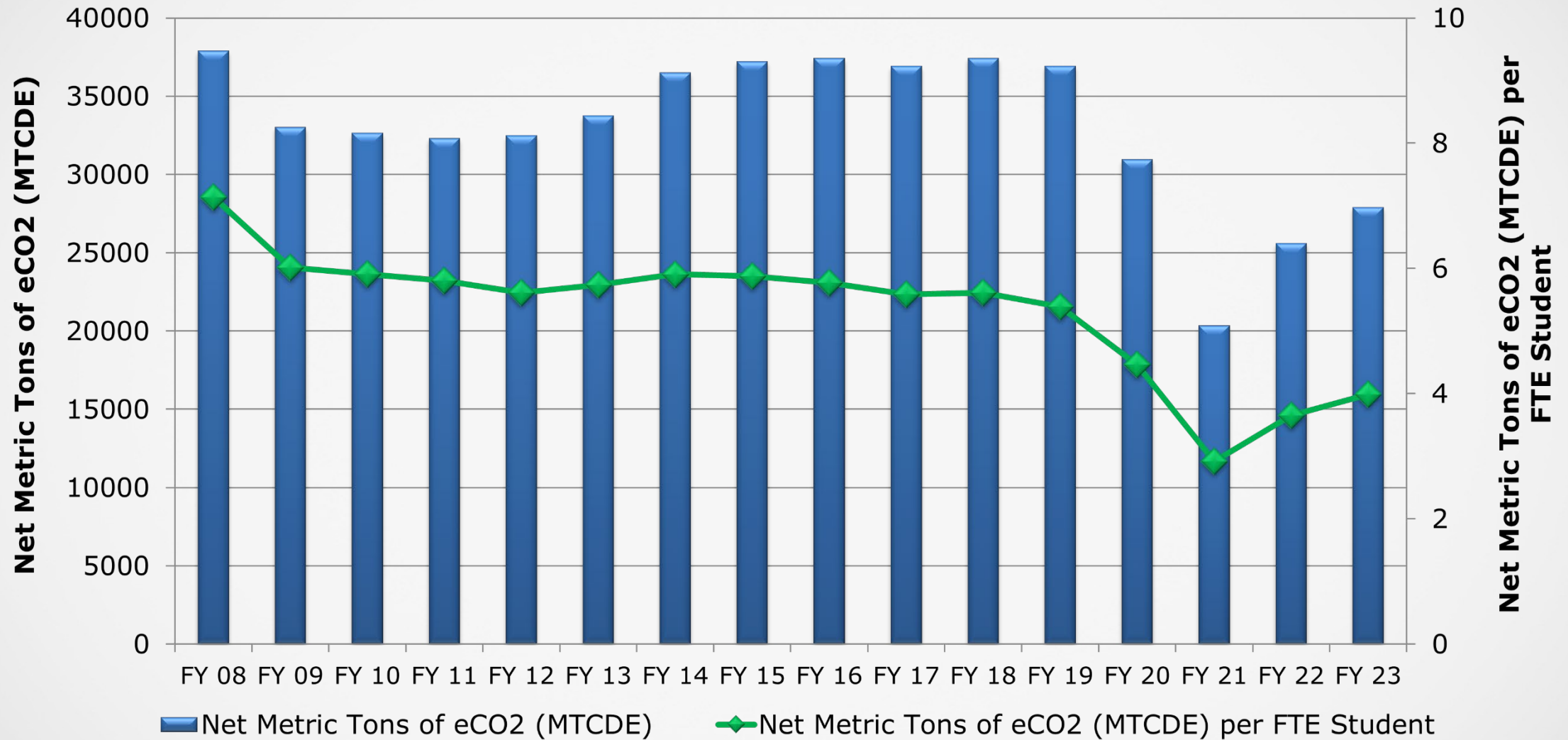
# GHG Emission Comparison



**- 26% from FY '08**

**- 57% from FY '08**

# GHG Emission Comparison



- 26% from FY '08

- 44% from FY '08