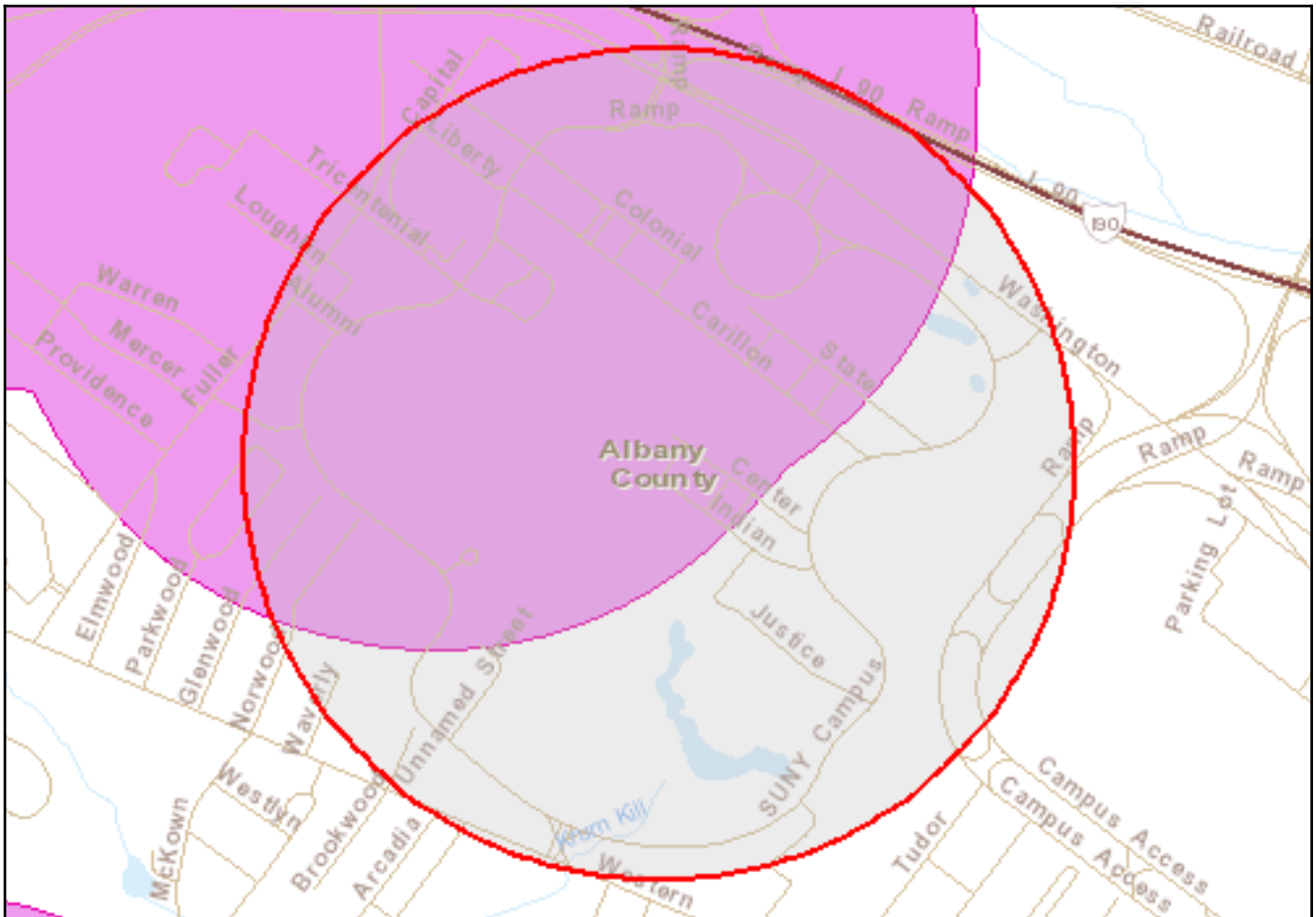


New York Nature Explorer

User Defined Results Report

Criteria: Selected Map Area



Common Name	Subgroup	Distribution Status	Year Last Documente	Protection Status State	Federal	Conservation Rank State	Global
-------------	----------	---------------------	---------------------	-------------------------	---------	-------------------------	--------

Animal: Butterflies and Moths

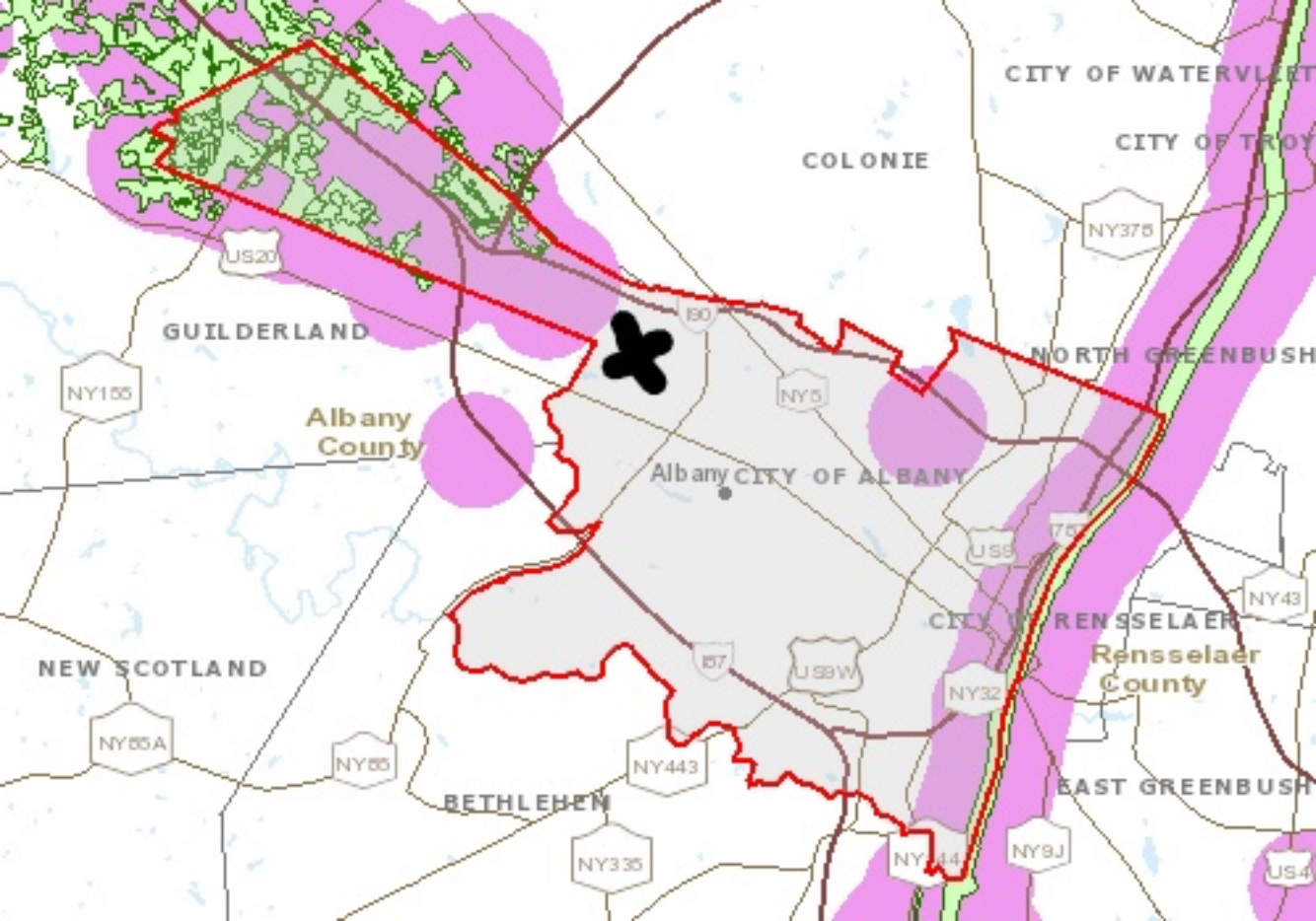
Bird Dropping Moth	Moths	Historically Confirmed	1990			S1S2	G3G4
<i>Cerma cora</i>							
Edwards' Hairstreak	Butterflies and Skippers	Historically Confirmed	1987			S3S4	G4
<i>Satyrium edwardsii</i>							
Inland Barrens Buckmoth	Moths	Recently Confirmed	2002	Special Concern		S1S2	G5T5
<i>Hemileuca maia maia</i>							
Pine Barrens Zanclognatha	Moths	Recently Confirmed	2016			S1S2	G4
<i>Zanclognatha martha</i>							
Sensitive Chytonix	Moths	Recently Confirmed	2016			S1S3	G4
<i>Chytonix sensilis</i>							

New York Nature Explorer

Common Name	Subgroup	Distribution Status	Year Last Documente	Protection Status		Conservation Rank	
				State	Federal	State	Global
Two-striped Cord Grass Moth	Moths	Recently Confirmed	2014			S1S3	G3G4
<i>Macrochilo bivittata</i>							

Note: Restricted plants and animals may also have also been documented in one or more of the Towns or Cities in which your user-defined area is located, but are not listed in these results. This application does not provide information at the level of Town or City on state-listed animals and on other sensitive animals and plants. A list of the restricted animals and plants documented at the corresponding county level can be obtained via the County link(s) on the original User Defined Search Results page. Any individual plant or animal on this county's restricted list may or may not occur in this particular user-defined area.

This list only includes records of rare species and significant natural communities from the databases of the NY Natural Heritage Program. This list is not a definitive statement about the presence or absence of all plants and animals, including rare or state-listed species, or of all significant natural communities. For most areas, comprehensive field surveys have not been conducted, and this list should not be considered a substitute for on-site surveys.



CITY OF WATERVLIET

CITY OF TROY

COLONIE

US20

NY375

GUILDERLAND

NORTH GREENBUSH

NY155

Albany
County

Albany CITY OF ALBANY

NY5

90

US99

75

NY43

CITY

RENSSELAER
Rensselaer
County

NEW SCOTLAND

87

US99W

NY32

NY85A

NY85

NY443

BETHLEHEM

EAST GREENBUSH

NY335

NY 44

NY9J

US4

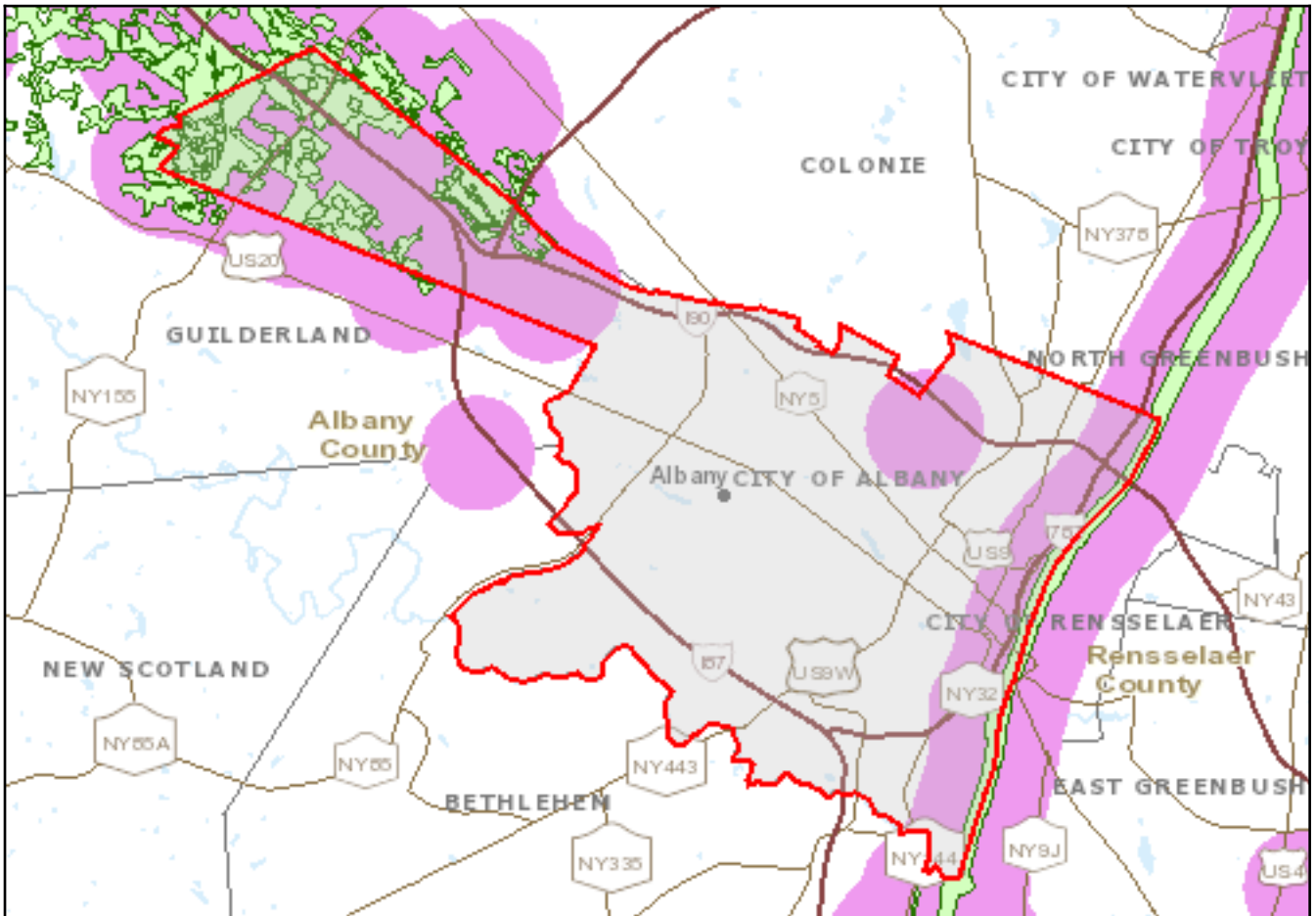
Table 11. Fauna and flora that can be seen in the Indian Pond habitat, according to the Office of Campus Planning.

Fauna Species	Scientific Name	Flora Species	Scientific Name
American Bullfrog	<i>Rana catesbeiana</i>	Bird's-Food Trefoil	<i>Lotus corniculatus</i>
Blue Jay	<i>Cyanocitta cristata</i>	Black locust	<i>Robina pseudoacacia</i>
Bluegill	<i>Lepomis macrochirus</i>	Canada Glodenrod	<i>Solidago canadensis</i>
Cabbage White Butterfly	<i>Pieris rapae</i>	Cinnamon Fern	<i>Osmunda cinnamomea</i>
Canada Goose	<i>Branta canadensis</i>	Common Cat-Tail	<i>Typha latifolia</i>
Common Blue Damselyf	<i>Encallagma cyathigerum</i>	Common Milkweed	<i>Asclepias syriaca</i>
Common Garter Snake	<i>Thamnophis sirtalis</i>	Common Reed	<i>Phragmites australis</i>
Eastern Box Turtle	<i>Terrapene carolina</i>	Cottonwood	<i>Populus deltoides</i>
Eastern Chipmunk	<i>Tamias striatus</i>	Daisy-Fleabane	<i>Erigeron strigosus</i>
Eastern Painted Turtle	<i>Chrysemys picta</i>	Elderberry	<i>Sambucus canadensis</i>
Green Heron	<i>Butorides virescens</i>	Gray Dogwood	<i>Cornus racemosa</i>
Mallard Duck	<i>Anas platyrhynchos</i>	Horse-chestnut	<i>Aesculus hippocastanum</i>
Pondhawk Dragonfly	<i>Erythemus simplicicollis</i>	Jewelweed	<i>Impatiens capensis</i>
Red-winged blackbird	<i>Agelaius phoeniceus</i>	Knapweed	<i>Centurea maculata</i>
Spring Peeper	<i>Pseudacris crucifer</i>	Pitch Pine	<i>Pinus rigida</i>
Tree Swallow	<i>Tachycineta bicolor</i>	Red Maple	<i>Acer rubrum</i>
		Red oak	<i>Quercus rubra</i>
		Staghorn Sumac	<i>Rhus typhina</i>
		Weeping Willow	<i>Salix babylonica</i>

New York Nature Explorer

Town Results Report

Criteria: Town: Albany - City



Common Name	Subgroup	Distribution Status	Year Last Documente	Protection Status		Conservation Rank	
				State	Federal	State	Global

Town: Albany - City

Animal: Birds

Red-headed Woodpecker <i>Melanerpes erythrocephalus</i>	Woodpeckers	Recently Confirmed	2013	Special Concern		S2?B	G5
--	-------------	--------------------	------	-----------------	--	------	----

Animal: Reptiles

Eastern Wormsnake <i>Carphophis amoenus</i>	Snakes	Recently Confirmed	2009	Special Concern		S2	G5
--	--------	--------------------	------	-----------------	--	----	----

Animal: Amphibians

Eastern Spadefoot <i>Scaphiopus holbrookii</i>	Frogs and Toads	Recently Confirmed	2006	Special Concern		S2S3	G5
---	-----------------	--------------------	------	-----------------	--	------	----

New York Nature Explorer

Common Name	Subgroup	Distribution Status	Year Last Documente	Protection Status		Conservation Rank	
				State	Federal	State	Global

Animal: Butterflies and Moths

A Geometer Moth <i>Apodrepanulatrix liberaria</i>	Moths	Recently Confirmed	2016			S1S2	G3
A Notodontid Moth <i>Paectes abrostolella</i>	Moths	Recently Confirmed	2015			S1	G4
Barrens Dagger Moth <i>Acronicta albarufa</i>	Moths	Historically Confirmed	1983			S1	G3G4
Barrens Itame <i>Speranza exonerata</i>	Moths	Recently Confirmed	2016			S1S3	G3G4
Bird Dropping Moth <i>Cerma cora</i>	Moths	Historically Confirmed	1990			S1S2	G3G4
Black-eyed Zale <i>Zale curema</i>	Moths	Recently Confirmed	2014			SU	G4
Broad-lined Catopyrrha <i>Erastria coloraria</i>	Moths	Recently Confirmed	2016			S1S2	G3G4
Chocolate Renia <i>Renia nemoralis</i>	Moths	Recently Confirmed	2016			SU	G4
Dusted Skipper <i>Atrytonopsis hianna</i>	Butterflies and Skippers	Historically Confirmed	1987			S2S3	G4G5
Edwards' Hairstreak <i>Satyrium edwardsii</i>	Butterflies and Skippers	Historically Confirmed	1987			S3S4	G4
Henry's Elfin <i>Callophrys henrici</i>	Butterflies and Skippers	Recently Confirmed	2012	Special Concern		S1	G5
Inland Barrens Buckmoth <i>Hemileuca maia maia</i>	Moths	Recently Confirmed	2002	Special Concern		S1S2	G5T5
Mottled Duskywing <i>Erynnis martialis</i>	Butterflies and Skippers	Recently Confirmed	2014	Special Concern		S1	G3
Orange Holomelina <i>Virbia aurantiaca</i>	Moths	Recently Confirmed	2015			SU	G5
Orange-striped Oakworm Moth <i>Anisota senatoria</i>	Moths	Recently Confirmed	2014			SU	G5

New York Nature Explorer

Common Name	Subgroup	Distribution Status	Year Last Documente	Protection Status		Conservation Rank	
				State	Federal	State	Global
Pine Barrens Zanclognatha <i>Zanclognatha martha</i>	Moths	Recently Confirmed	2016			S1S2	G4
Projecta Gray <i>Cleora projecta</i>	Moths	Recently Confirmed	2015			SU	G4
Sensitive Chytonix <i>Chytonix sensilis</i>	Moths	Recently Confirmed	2016			S1S3	G4
Straight Lined Mallow Moth <i>Bagisara rectifascia</i>	Moths	Recently Confirmed	2014			SU	G4
Tawny Crescent <i>Phyciodes batesii batesii</i>	Butterflies and Skippers	Historically Confirmed	1970	Special Concern		SH	G5T1
Toothed Apharetra <i>Sympistis dentata</i>	Moths	Historically Confirmed	1990			S2S4	G5
Two-striped Cord Grass Moth <i>Macrochilo bivittata</i>	Moths	Recently Confirmed	2014			S1S3	G3G4
Waxed Sallow <i>Chaetagnalea cerata</i>	Moths	Recently Confirmed	2014			S1S3	G3G4

Animal: Dragonflies and Damselflies

Cobra Clubtail <i>Gomphurus vastus</i>	Dragonflies	Historically Confirmed	1876			S1	G5
---	-------------	------------------------	------	--	--	----	----

Animal: Bees, Wasps and Ants

American Bumble Bee <i>Bombus pensylvanicus</i>	Bees	Historically Confirmed	1987			S1	G3G4
--	------	------------------------	------	--	--	----	------

Animal: Mussels and Clams

Alewife Floater <i>Utterbackiana implicata</i>	Freshwater Mussels	Historically Confirmed	1984			S1	G5
Eastern Pondmussel <i>Ligumia nasuta</i>	Freshwater Mussels	Historically Confirmed	1904			S2	G4
Tidewater Mucket <i>Leptodea ochracea</i>	Freshwater Mussels	Historically Confirmed	1890			S1	G3G4
Yellow Lampmussel <i>Lampsilis cariosa</i>	Freshwater Mussels	Historically Confirmed	1890			S2S3	G3G4

New York Nature Explorer

Common Name	Subgroup	Distribution Status	Year Last Documente	Protection Status		Conservation Rank	
				State	Federal	State	Global

Plant: Flowering Plants

American Knotweed <i>Polygonum buxiforme</i>	Other Flowering Plants	Historically Confirmed	1974	Endangered		S1S2	G5
Carey's Smartweed <i>Persicaria careyi</i>	Other Flowering Plants	Historically Confirmed	1955	Endangered		S1S2	G4
Chaffseed <i>Schwalbea americana</i>	Other Flowering Plants	Extirpated	1865			SX	G2
Dune Sandspur <i>Cenchrus tribuloides</i>	Grasses	Historically Confirmed	1890	Threatened		S2	G5
Estuary Beggar Ticks <i>Bidens bidentoides</i>	Asters, Goldenrods and Daisies	Historically Confirmed	1945	Rare		S3	G3G4
Georgia Bulrush <i>Scirpus georgianus</i>	Sedges	Extirpated	1964	Endangered		S1S2	G5
Great Plains Flat Sedge <i>Cyperus lupulinus ssp. lupulinus</i>	Sedges	Historically Confirmed	1950	Threatened		S1S2	G5T5?
Marsh Lousewort <i>Pedicularis lanceolata</i>	Other Flowering Plants	Extirpated		Threatened		S2S3	G5
Rough Pennyroyal <i>Hedeoma hispida</i>	Other Flowering Plants	Historically Confirmed	1950	Threatened		S2S3	G5
Schweinitz's Flat Sedge <i>Cyperus schweinitzii</i>	Sedges	Recently Confirmed	2008	Rare		S3	G5
Three Birds Orchid <i>Triphora trianthophoros ssp. trianthophoros</i>	Orchids	Historically Confirmed		Threatened		S2	G4?T4?
Whip Nut Sedge <i>Scleria triglomerata</i>	Sedges	Historically Confirmed	1937	Endangered		S1	G5
Yellow Giant Hyssop <i>Agastache nepetoides</i>	Other Flowering Plants	Recently Confirmed	2017	Threatened		S2S3	G5

Natural Community: Uplands

Pitch Pine-Oak Forest <i>Pitch pine-oak forest</i>	Forested Uplands	Recently Confirmed	2017			S2S3	G4G5
---	------------------	--------------------	------	--	--	------	------

New York Nature Explorer

Common Name	Subgroup	Distribution Status	Year Last Documente	Protection Status		Conservation Rank	
				State	Federal	State	Global
Pitch Pine-Scrub Oak Barrens <i>Pitch pine-scrub oak barrens</i>	Barrens and Woodlands	Recently Confirmed	2017			S1	G2
Successional Northern Sandplain Grassland <i>Successional northern sandplain grassland</i>	Open Uplands	Recently Confirmed	2018			S3	G4?

Natural Community: Tidal Wetlands

Tidal River <i>Tidal river</i>	Subtidal Wetlands	Recently Confirmed	2000			S3	G4
-----------------------------------	-------------------	--------------------	------	--	--	----	----

Note: Restricted plants and animals may also have also been documented in one or more of these Towns or Cities, but are not listed in these results. This application does not provide information at the level of Town or City on state-listed animals and on other sensitive animals and plants. A list of the restricted animals and plants documented in the corresponding county (or counties) can be obtained via the County link(s) on the original Town Search Results page. Any individual plant or animal on this county's restricted list may or may not occur in this particular Town or City.

This list only includes records of rare species and significant natural communities from the databases of the NY Natural Heritage Program. This list is not a definitive statement about the presence or absence of all plants and animals, including rare or state-listed species, or of all significant natural communities. For most areas, comprehensive field surveys have not been conducted, and this list should not be considered a substitute for on-site surveys.