



Hispanic Center Lehigh Valley The Fowler Community Wellness Center

VISION FOR RENAISSANCE CAPITAL CAMPAIGN, Phase Two

Vision: The vision for our Fowler Community Wellness Center is to break the cycle of poverty by working closely with our partners to co-locate services and offer programs that get more resources into the hands of our community members as they continue their journey to self-sufficiency.

Campaign Goal: To secure \$2 million in contributions to renovate an existing building for use as a center for community-based, integrated health and wellness services.

Integrated Health Programs

CEP provides resources to stabilize individuals and families in crisis, enable educational success, and promote financial independence. **CEP for Students** works with families, students and schools to encourage attendance and positive behavior. **CEP for Adults** works with **PA CareerLink®** to develop job readiness skills and link participants to training and employment.

Partners: Bethlehem Area School District/United Way Community Schools (Donegan Elementary & Broughal Middle), PA CareerLink® Lehigh Valley Employment & Training Center, Promise Neighborhoods of the Lehigh Valley

Individual, group and family therapy for children, adolescents and adults will incorporate knowledge about the impact of trauma and recovery. Upon licensure as a psychiatric clinic, board-certified psychiatrists and nurse practitioners will provide evaluation and medication management services. Behavioral health stress reduction and self-care will supplement therapeutic approaches.

Partners: Pinebrook Family Answers, Community Voices Clinic of Lehigh University's Counseling Psychology Graduate Program, St. Luke's University Health Network

Wellness services will encourage disease prevention via healthy eating, fitness and other lifestyle changes. Medical providers will work with other wellness center partners to manage chronic conditions and ensure timely access to care. Students in health training programs will provide health monitoring services while gaining real-life experience.

Partners: St. Luke's University Health Network, Cedar Crest and Moravian College Nursing Programs, Kellyn Foundation, Northampton Community College Allied Health and Community Health Worker Programs

WIC provides nutritional and supplemental dietary services to mothers, fathers and children from conception through 5 years of age. Individualized dietary counseling ensures that parents and their children have the tools to lead healthy lifestyles. HCLV's program emphasizes the health benefits of breastfeeding and early childhood education.

Partner: Maternal and Family Health Services, Inc.

This shared space will be used by a wide range of community partners for integrated health activities such as healthy eating and cooking, exercise and stress reduction classes, and community gatherings to address issues that impact south Bethlehem and other nearby neighborhoods.

Partners: All of the south Bethlehem community and beyond.

Hispanic Center Lehigh Valley

The Fowler Community Wellness Center 502 E. 4th Street, Bethlehem, PA 18015

Honorary Co-chairmen:

Richard A. Anderson, President & CEO,
St. Luke's University Health Network
W. Beall Fowler, PhD., Professor
Emeritus, Lehigh University
Joseph J. Roy, PhD., Superintendent,
Bethlehem Area School District



Community
Empowerment
Programs
(CEP)

Behavioral
Health
Services

Physical
Health
Services

Women,
Infants
& Children
(WIC)
Nutrition
Program

Community
Engagement
Room



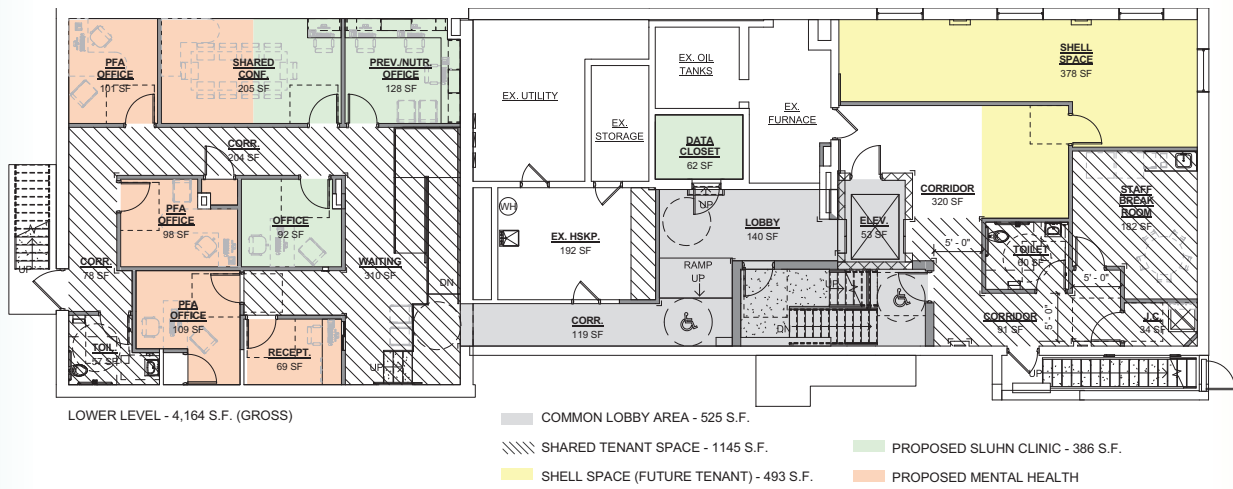
Hispanic Center Lehigh Valley The Fowler Community Wellness Center

VISION FOR RENAISSANCE CAPITAL CAMPAIGN, Phase Two

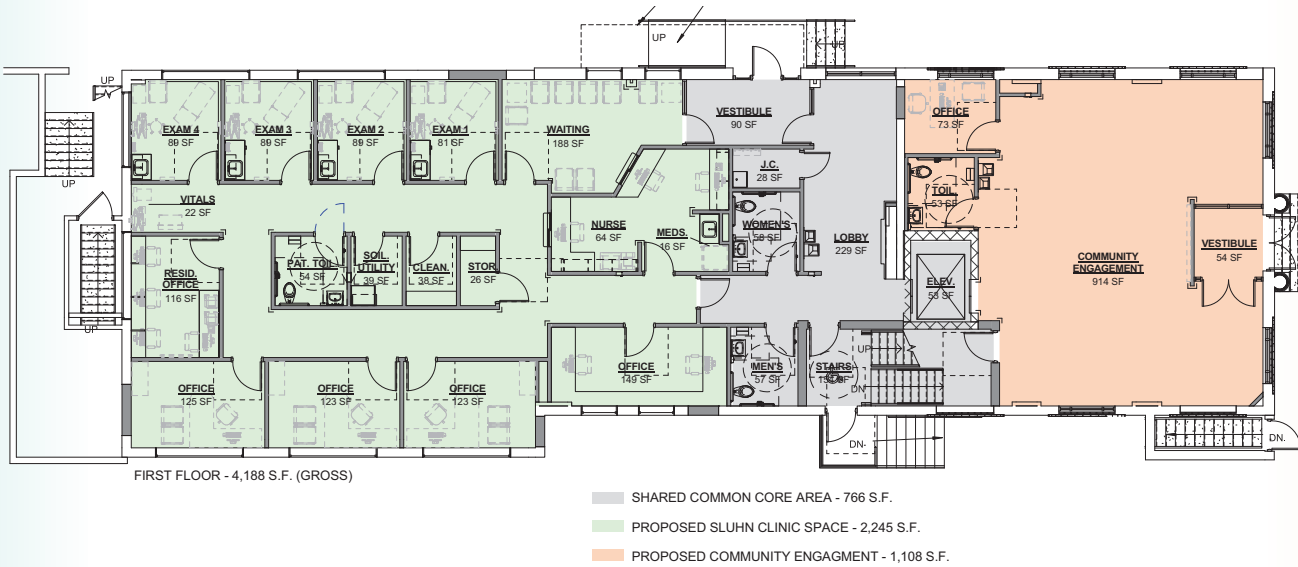
For more information or to make a donation to support creation of the Fowler Community Wellness Center, please visit the following Hispanic Center Lehigh Valley web page:

<http://hclv.org/capital-campaign>

Proposed Lower Level Suites



Proposed First Floor Suites



Proposed Second Floor Suites

