

CATAWBA COLLEGE SMOKE-FREE CAMPUS POLICY

Due to the acknowledged hazards arising from exposure to environmental tobacco smoke, Catawba College provides a smoke-free environment for all employees and visitors on our campus. This policy covers the smoking of any tobacco product and applies to all students, employees and visitors of the College.

To limit the difficulties associated with second-hand smoke, a number of outdoor smoking areas have been established on the campus. Smoking is only permitted inside the designated area and not in transit to or from it. Those areas are:

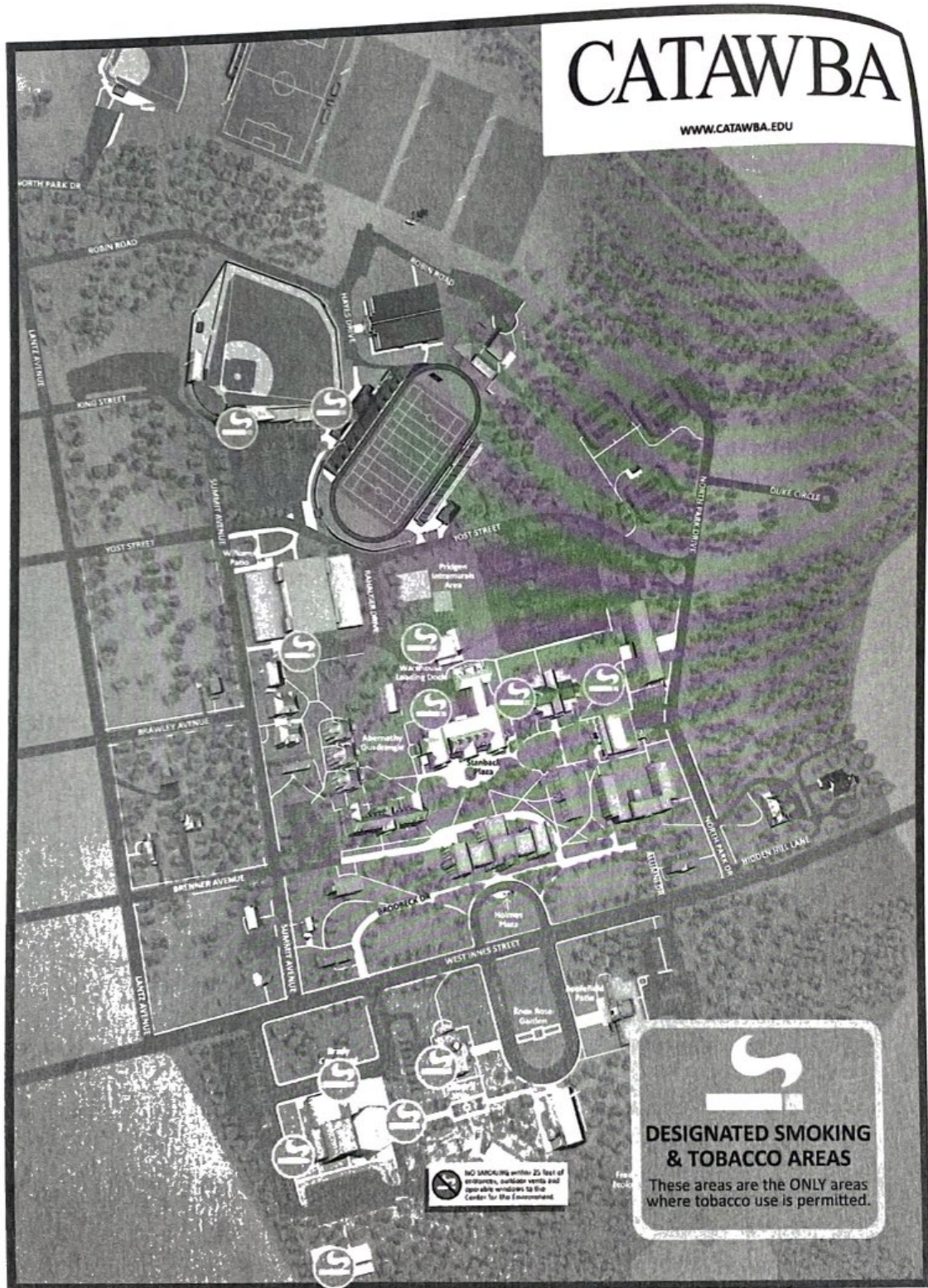
1. The area on the sidewalk between the Lerner Wellness Center (in the Cannon Student Center) and Ketner Hall.
2. Hoke Hall: the uncovered portion of the patio located on the interior campus side of Hoke Hall.
3. Abernethy Physical Education Center: the patio at the entrance to the Kirkland Lobby, located on the interior side of campus (Ruth Richards House/Abernethy Village side).
4. Robertson College Community Center in the areas specified below:
 - On the patio located between Peeler Crystal Lounge and Hedrick Little Theatre.
 - To the left of the entrance area to the main doors to Keppel Lobby, under the tall covered walkway area (portico)
 - Outside the Keppel Lobby doors which lead out to the parking lot behind the RCCC (at the far opposite end of the lobby from the Peeler Crystal Lounge)
 - At the stage door entrance of the theatre, located on the right side of the building as you face the front of the building from the street
5. Catawba College Theatre Annex: immediately outside of the front entrance.
6. Florence Busby Corriher Theatre: immediately outside of the lobby entrance
7. Shuford Science Building: outside on the concrete sidewalk from the greenhouse to the side of the Shuford Science Building
8. Immediately outside the main entrance to Newman Park Baseball Stadium
9. On the Dearborn Patio between Shuford Stadium and the Baseball Clubhouse
10. On the loading dock outside the Maintenance Facility
11. On the loading dock outside the Chartwell's kitchen area of the Cannon Student Center.

Any Catawba College student, employee, or visitor to our campus found in violation of smoking outside of a designated area will be subjected to possible fine of \$50.00.

Please see the campus map showing the location of these designated smoking areas on the next page.

CATAWBA

WWW.CATAWBA.EDU



NO SMOKING within 25 feet of
entrances, outdoor vents and
open air vents for the
Center for the Environment


**DESIGNATED SMOKING
& TOBACCO AREAS**
These areas are the **ONLY** areas
where tobacco use is permitted.

Catawba College strongly encourages all members of the community to utilize resources to assist in the cessation of tobacco related products. If you need additional information or resources related to tobacco cessation programs, please visit the Proctor Student Health Center. For employees covered under the Catawba College Health Care Plan, there are also cessation resources available through our plan.

Achieving a smoke-free environment requires support from all members of the College. College officials have developed and maintain a plan for communicating the policy to their constituents including, but not limited to, students, college employees, contractors, vendors, and visitors.

Catawba College is committed to providing its employees and students with a safe and healthy working and learning environment. The College recognizes that the use of tobacco products in campus buildings is detrimental to the health and safety of students, staff, faculty and visitors.

It is the goal of the College to protect the public health and environment of its employees by tightening smoking regulations, eliminating smoking in work areas, assisting employees who wish to quit smoking, and establishing a constructive disciplinary system for offenders without polarizing employees into pro-and-anti smoking campus

Smoking is prohibited on the College campus except in the designated smoking areas outside some of the buildings on campus. Please see the campus map on the next page that shows the location of these designated smoking areas.

All employees of the College share in the responsibility for adhering to and enforcing this policy and have the responsibility for bringing it to the attention of fellow employees and visitors.

This policy is communicated through signs posted in each College facility. Signs prohibiting smoking are conspicuously posted in every building.

Visitors will be informed of this policy through the posted signs and their host will explain it to them.

The College Health Center will assist employees who wish to quit smoking by facilitating access to recommended smoking cessation programs and materials. These type of programs are also available through our health care plan.

All violations of this policy will be handled through standard disciplinary procedures. The decision to provide or not provide designated smoking areas outside the buildings will be at the discretion of the President of the College and his/her Cabinet.

All materials used for smoking, including cigarette butts and matches, will be extinguished and disposed of in appropriate containers.