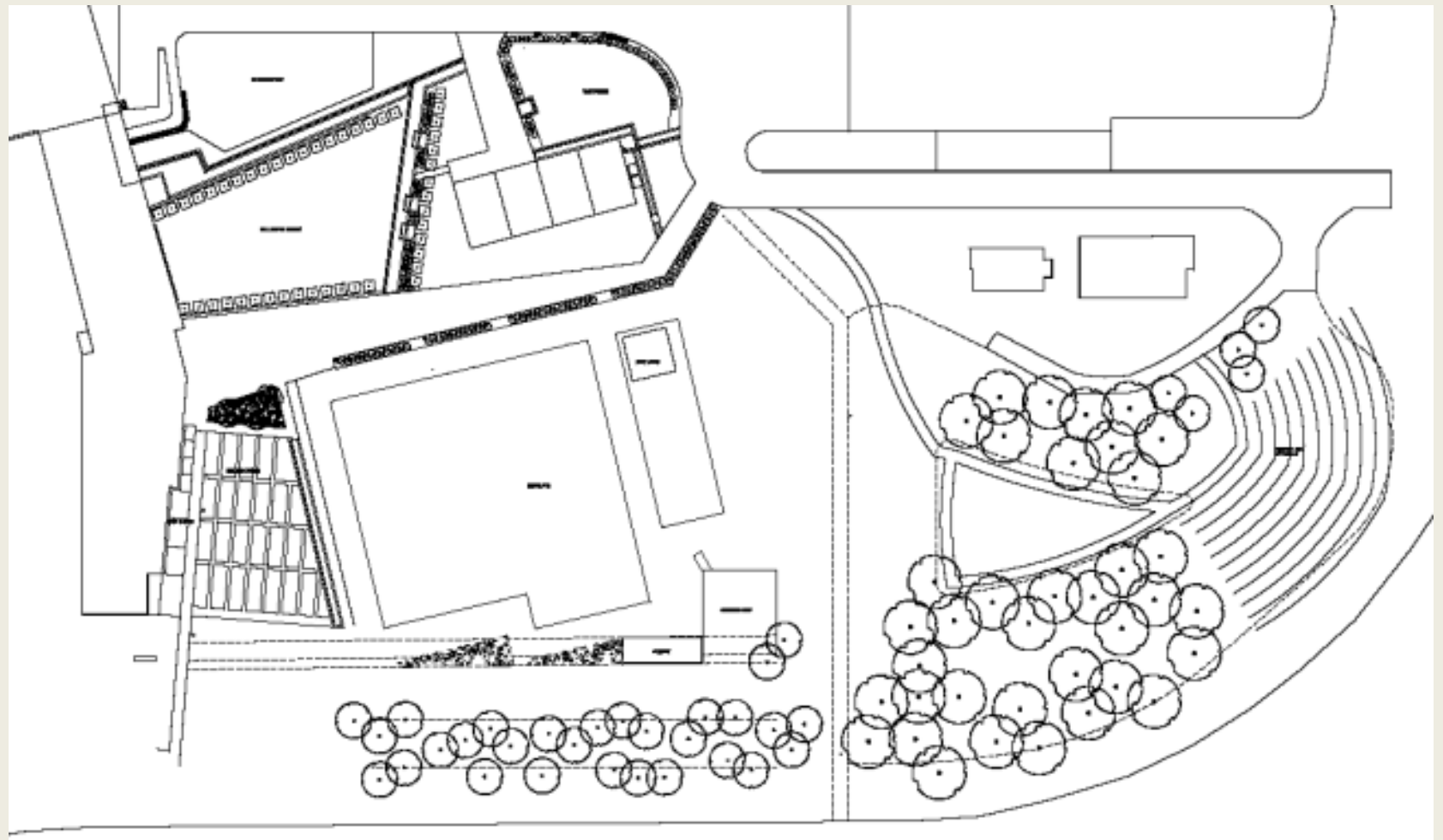


# Whitby Campus Landscape and Arboretum Plan



**THE BUILDING OF THE CFF LANDSCAPE,  
STUDENT COMMONS AND ARBORETUM**

# Base Plan March 2016



# 3 Year Plan and Immediate Actions



The focus for the evolution of the Whitby campus over the next 3 years will be construction and maintenance of the arboretum, the students common spaces, the interconnecting paths and supporting signage that demonstrates our position as an educational facility.



# 3 Year Plan and Immediate Actions



## Year 1:

- Plant large woody specimens for curated collection, fruit and nut trees, and around commons.
- Some supporting elements for high traffic areas installed.

## Year 2:

- Continue to care for the newly planted trees
- Install the structure for trellised plants
- Begin defining the pedestrian paths and student commons

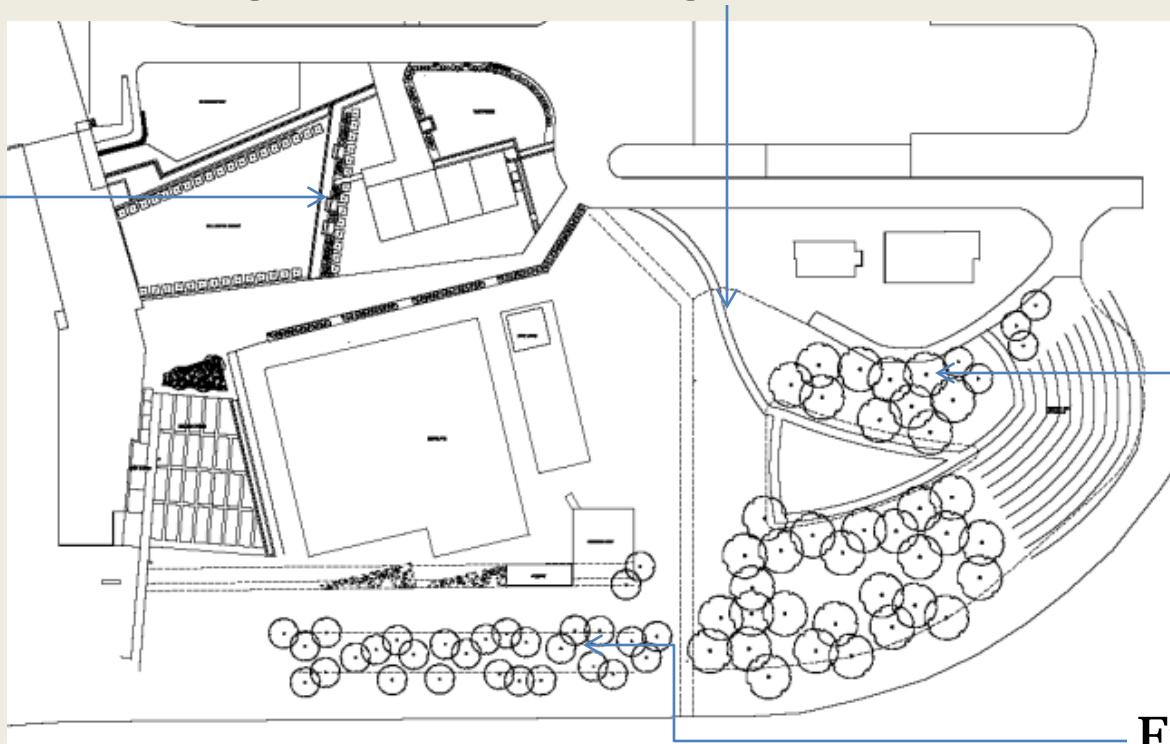
## Year 3:

- Finish the pedestrian paths and commons
- Install supporting signs and information boards.
- Plant all remaining shrubs, perennials, and trellised plants.

# Phase 1: Spring 2016 – Winter 2016

## Designated areas for logistical movement

Student  
Commons



Ornamental  
Trees on hill

Fruiting and  
Ornamental Trees on berm

# Phase 1: Spring 2016 – Winter 2016



## Areas of Focus:

### Arboretum Stage 1

- Trees to be planted will include ornamental species (Oak, Maple, Pine) so that students and community will have a curated collection for identification as well as a selection of trees with harvestable nuts and fruits to align with the CFF vision.
- Preparation of designated spaces for tree placement.
- Staging materials (soil, mulch, and stone).
- Delivery and planting of trees.
- Stake trees only if required.
- Clean up and construction of tree wells (on hill and berm only).
- Continuing watering of trees.

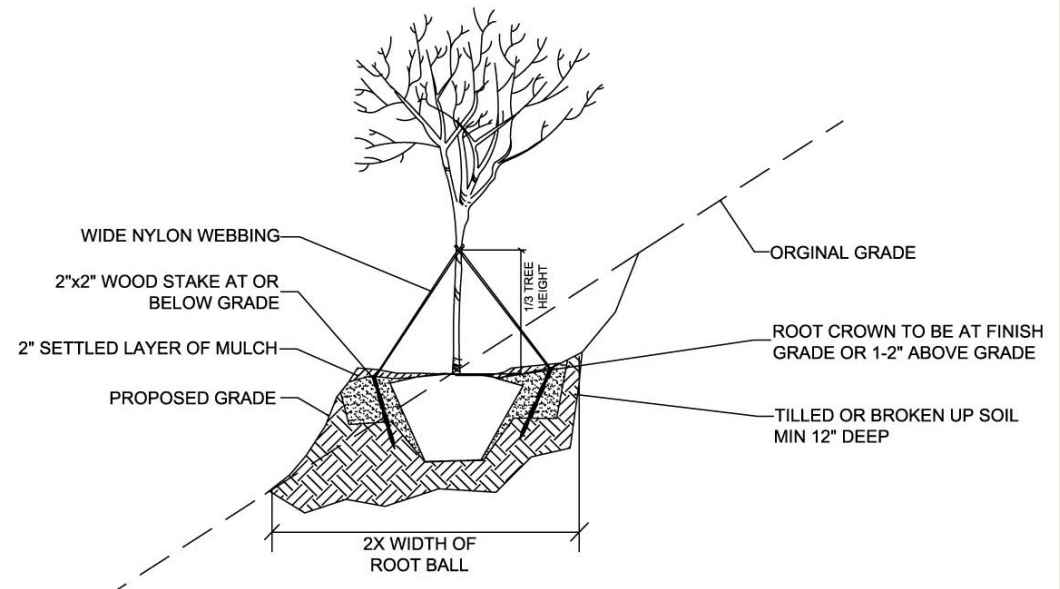
# Phase 1: Spring 2016 – Winter 2016

## Arboretum Stage 1: Planting on a slope

This detail closely represents the way in which we will need to plant trees on the slopes around the Whitby campus.

The difference being that we'll need to plant them slightly higher due to the clay soil and the

downward slope will need to be retained with stone to prevent erosion. Staking will only be done if the trees require it for stability. Each tree will be assessed individually.

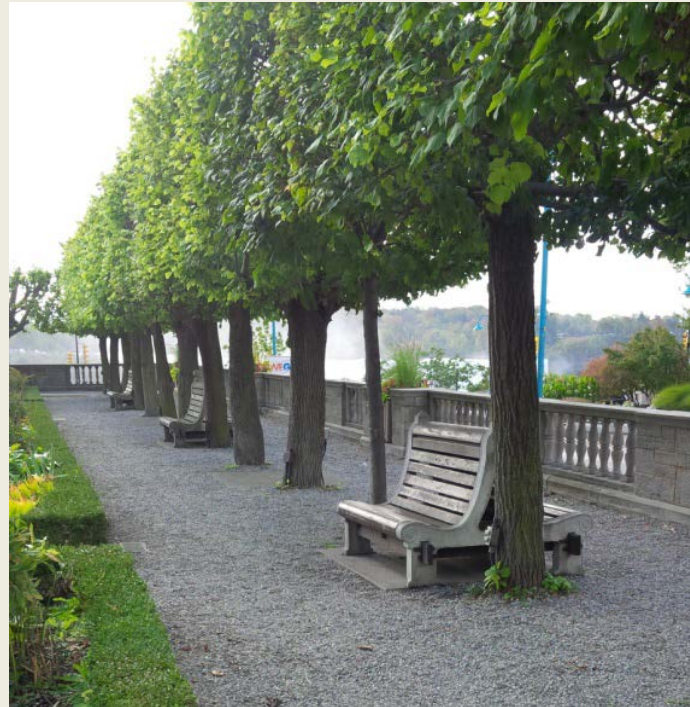
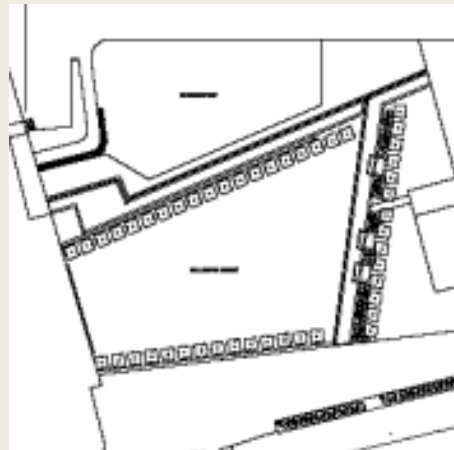


# Phase 1: Spring 2016 – Winter 2016

## Areas of Focus:

### Aerial Hedge around Student Commons

- Preparation of designated spaces for tree placement.
- Delivery and planting of trees.
- Planting fruiting Shrubs
- Continuing watering of trees.





# Phase 1: Spring 2016 – Winter 2016



## Areas of Focus:

### Areas for Logistical Movement and Staging

- Paths for the movement of materials will need to be defined and as best as possible maintained.
- At completion of staging materials and installation of trees, paths are to be cleaned up and mulched as a clean aesthetic finish.



# Preliminary Budgeting Phase 1



**Student Commons:**

27,000

**Arboretum:**

44,600

**Designated areas for movement:**

1,700

**Labour:**

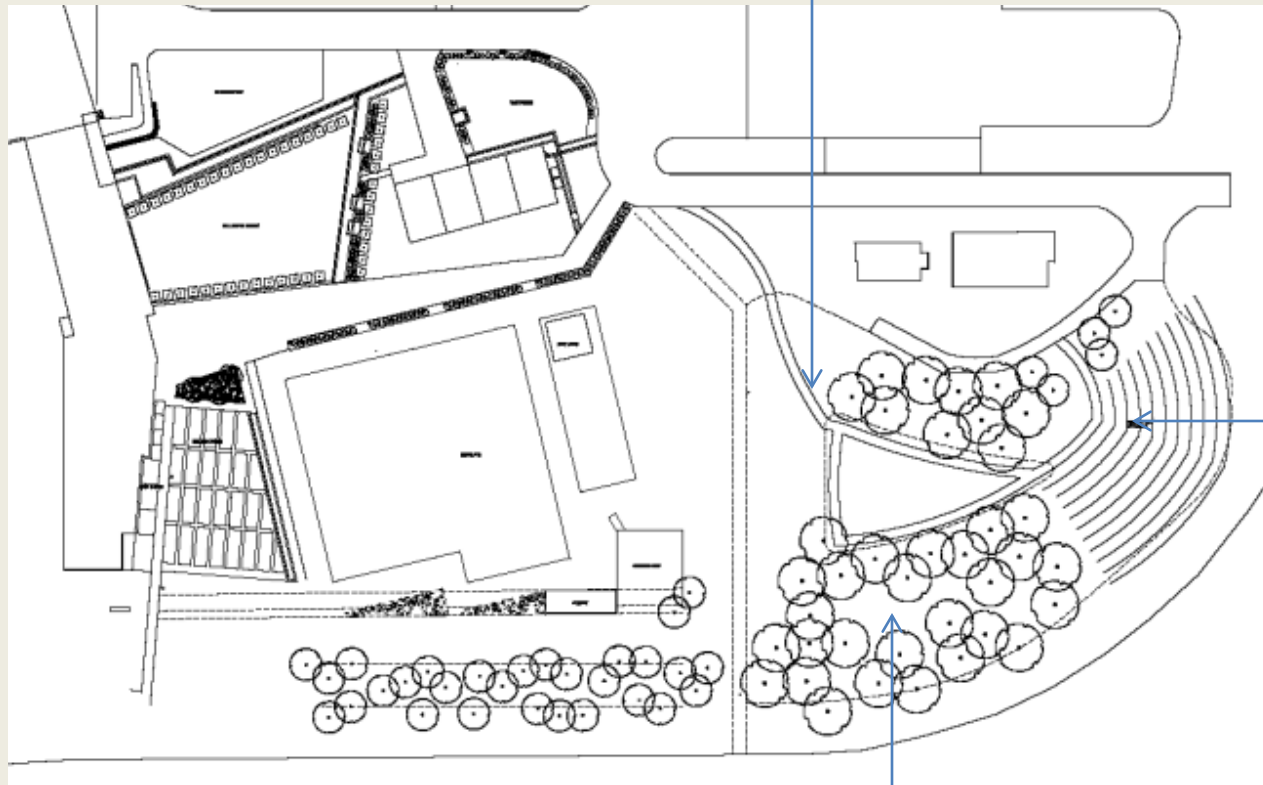
26,700

**Total:**

100,000

# Phase 2: Spring 2017 – Winter 2017

Further refinement of walkways and traffic paths.



Install post and lines for trellised plants.

Continued maintenance of the arboretum.

# Phase 2: Spring 2017 – Winter 2017



## Areas of Focus:

### Arboretum Stage 2

- Continued maintenance and care for plantings of the previous year.
- Begin planting shrubs and understory plants.
- Further refinement of walkways/traffic paths.
- Placement of posts and lines for vineyard / trellised plants.
- Dressing of soil between rows of post and line.

# Phase 2: Spring 2017 – Winter 2017



## Areas of Focus:

### Begin planting shrubs and understory plants.

- Delivery and staging of smaller woody plant material and aggregates.
- Installation of plants.
- Install mulch.
- Continued watering.





# Phase 2: Spring 2017 – Winter 2017



## Areas of Focus:

### Further refinement of walkways/traffic paths

- Working from furthest to nearest points of access.
- Install aggregate / hardscape in completed areas.



# Phase 2: Spring 2017 – Winter 2017

## Areas of Focus:

### Placement of posts and lines for vineyard / trellised plants.

- Stage posts along south slope.
- Preparation of individual holes.
- Install gravel aggregate and post.
- Attach hardware to post for lines.



# Preliminary Budgeting Phase 2



Shrubs and understory plants

27,300

Walkways/traffic paths

32,000

Posts and lines for vineyard

12,600

Labour:

28,100

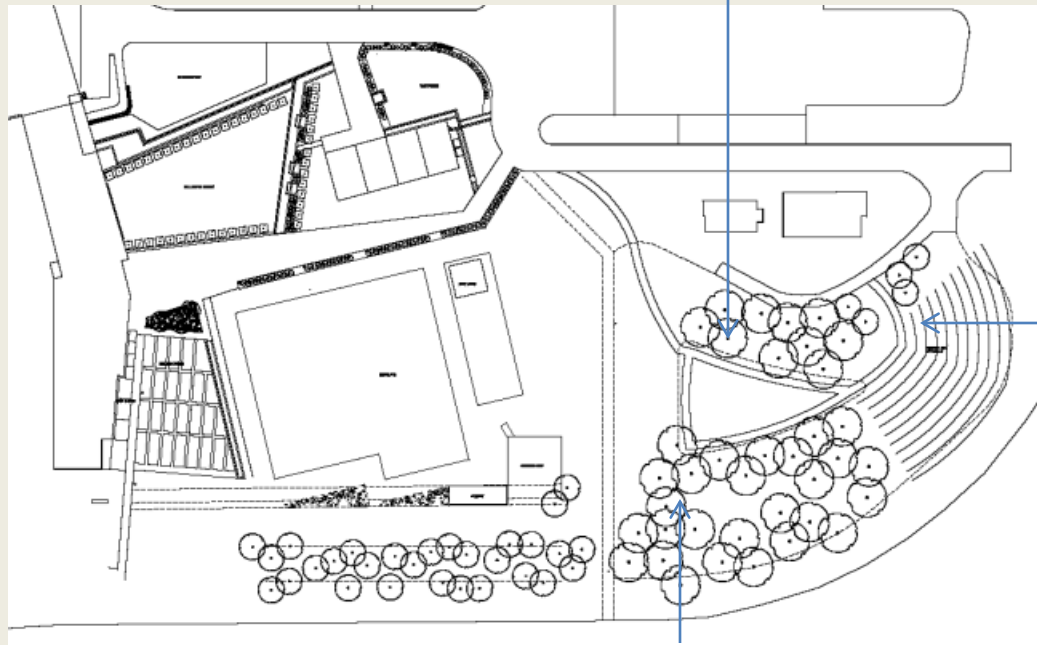
Total:

100,000



# Phase 3: Spring 2018 – Winter 2018

Complete walkways and traffic paths, and install signage.



Install  
trellised  
plants.

Continued maintenance of arboretum and plant  
all remaining shrubs and understory plants.

# Phase 3: Spring 2018 – Winter 2018



## Areas of Focus:

### Arboretum Stage 3

- Continued maintenance and care for plantings from previous years.
- Replace any trees that have failed.
- Install trellised plants.
- Install remaining shrubs and understory plants.
- Complete foot paths and student elements.
- Install signage and aesthetic elements

# Phase 3: Spring 2018 – Winter 2018



## Areas of Focus:

### Install trellised plants

- Preparation of soil with amendments and mulch.
- Pre-dig holes.
- Delivery and installation of plants.
- Install mulch
- Install wire for espalier.



# Phase 3: Spring 2018 – Winter 2018



## Areas of Focus:

### Install remaining shrubs and understory plants.

- Continue from furthest to nearest access points.
- Stage aggregates for planting.
- Prepare holes for the placement of plants.
- Delivery and planting of remaining plants.
- Install mulch
- Water on establishment schedule.



# Phase 3: Spring 2018 – Winter 2018



## Areas of Focus:

### Complete foot paths and student elements.

- Working from former terminus, furthest to nearest points of access.
- Install aggregate / hardscape in completed areas.





# Phase 3: Spring 2018 – Winter 2018

## Areas of Focus:

### Install signs and remaining aesthetic elements.

- Identify messaging and areas of focus for the communication of various messaging yet to be defined.
- Prepare sites individually.
- Install posts and framework.
- Attach signs.



# Preliminary Budgeting Phase 3



**Trellised plants:**

17,500

**Shrubs and understory plants :**

19,200

**Foot paths and student elements :**

17,000

**Signage and aesthetic elements :**

17,000

**Labour:**

29,300

**Total:**

# 5 Year Plan



- Continue to maintain trees throughout the property will regards to watering (in seasons of drought), fertilizing, pruning structural defects, reapplying mulch to improve cultural conditions.
- Continue to train the trellised plants and encourage new growth.
- Continue to train the pleached Hornbeam into an aerial hedge.
- Maintain pathways and common spaces.



# 10 Year Plan



- Continue to maintain trees throughout the property will regards to fertilizing, pruning structural defects and to improve health, reapplying mulch to improve cultural conditions.
- Maintain trellised plants now in maturity and bearing fruit. Replace structural elements as required.
- Maintain the connecting paths and information boards.