

[My account \(/user\)](/user)

[Log out \(/user/logout?current=cmap/footprint\)](/user/logout?current=cmap/footprint)

**SUSTAINABILITY INDICATOR MANAGEMENT & ANALYSIS PLATFORM**

[\(L\)](#)



[\(L\)](#)

### 3. Results

One or more of your institution's eGRIDs are set to use the US Average. To select a different region, update your eGRIDs on [the calculation methods form \(/cmap/methods\)](/cmap/methods). ✕

**Footprints \***

- Carbon
- Nitrogen

**Report Type \***

- Total footprint
- Scopes
- Categories
- Sources
- Gas/pollutant

**Scope 2 Method ⓘ \***

- Market-Based
- Location-Based
- Custom Fuel Mix

[More information on scope 2 methods \(/cmap/resources/scope2\)](/cmap/resources/scope2)

**Graph Type \***

- Line
- Bar

**Fiscal Year Range \***

1990

-

2017

**Normalization**

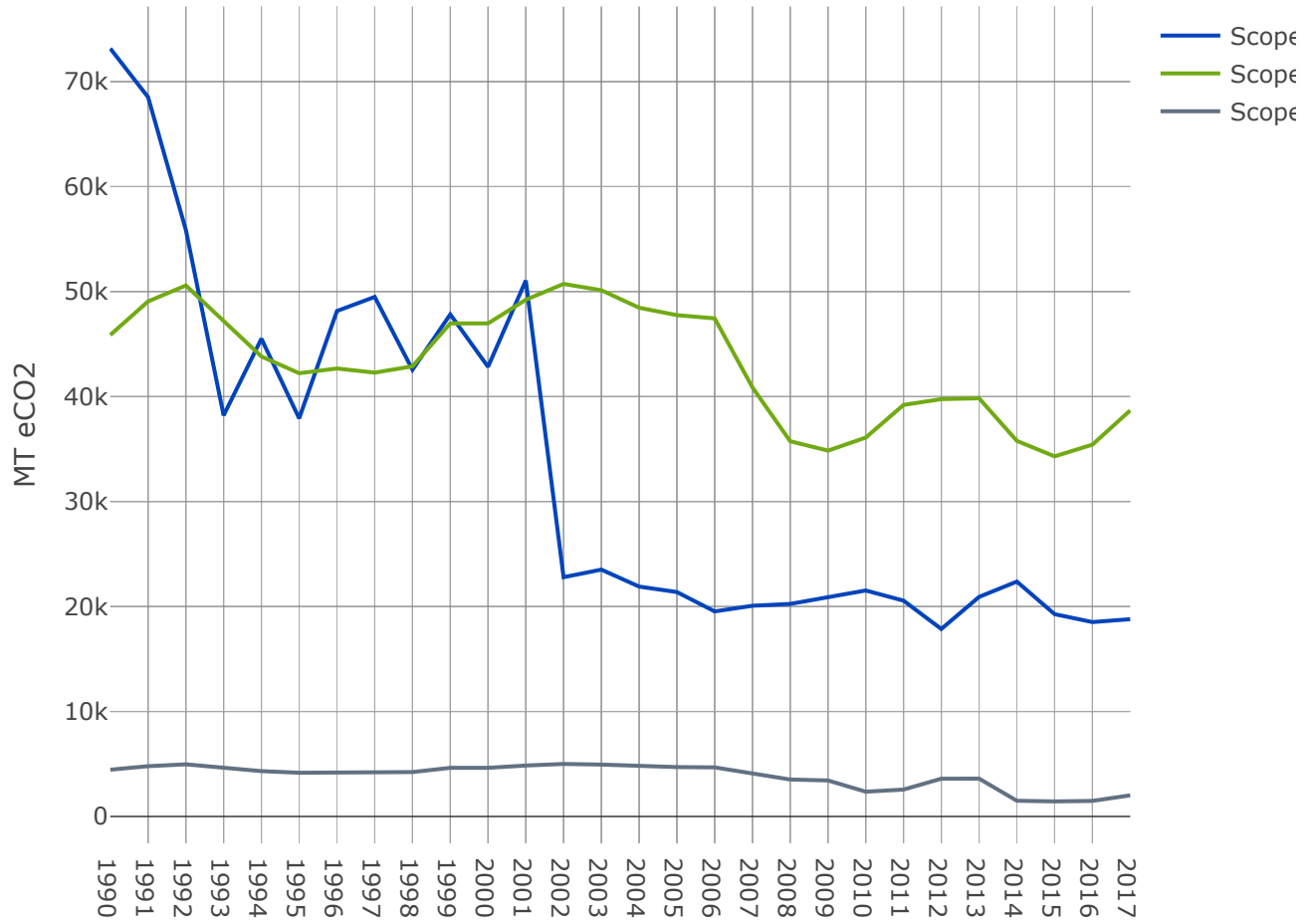
None ▼

CALCULATE

[? \(/cmap/resources/graphs-instructions\)](/cmap/resources/graphs-instructions) [Get help with graphs \(/cmap/resources/graphs-instructions\)](/cmap/resources/graphs-instructions)



### Carbon



### Carbon

Fiscal Year	Scope	CO2 (kg)	CH4 (kg)	N2O (kg)	GHG MTCDE
1990	1	72,587,717	8,026	1,220	73,151.98
1990	2	45,837,684	349	67	45,866.45
1990	3	4,533,397	-3,148	7	4,456.76
1991	1	67,992,369	7,517	1,146	68,521.68
1991	2	49,032,376	374	72	49,063.15
1991	3	4,849,356	-2,380	7	4,792.06
1992	1	55,433,995	6,138	939	55,867.16
1992	2	50,549,331	385	74	50,581.06

<b>Fiscal Year</b>	<b>Scope</b>	<b>CO2 (kg)</b>	<b>CH4 (kg)</b>	<b>N2O (kg)</b>	<b>GHG MTCDE</b>
1992	3	4,999,384	-1,312	8	4,968.85
1993	1	37,901,649	4,212	650	38,200.63
1993	2	47,220,253	360	69	47,249.89
1993	3	4,670,135	-885	7	4,650.14
1994	1	45,168,629	4,985	733	45,511.59
1994	2	43,792,341	334	64	43,819.83
1994	3	4,331,111	-483	7	4,321.01
1995	1	37,645,919	4,148	583	37,923.47
1995	2	42,197,026	322	62	42,223.51
1995	3	4,173,332	-364	6	4,166.15
1996	1	47,795,885	5,283	748	48,150.78
1996	2	42,646,140	325	63	42,672.91
1996	3	4,217,750	-329	6	4,211.45
1997	1	49,113,992	5,489	804	49,490.83
1997	2	42,251,827	322	62	42,278.35
1997	3	4,178,752	-415	6	4,170.28
1998	1	42,238,356	4,681	666	42,553.77
1998	2	42,855,037	327	63	42,881.93
1998	3	4,238,410	-346	7	4,231.69
1999	1	47,471,293	5,282	753	47,827.85
1999	2	46,938,248	358	69	46,967.71
1999	3	4,642,244	-377	7	4,634.92
2000	1	42,527,638	4,706	626	42,831.92
2000	2	46,936,664	358	69	46,966.12
2000	3	4,642,088	-455	7	4,632.83
2001	1	50,673,403	5,637	802	51,053.40

<b>Fiscal Year</b>	<b>Scope</b>	<b>CO2 (kg)</b>	<b>CH4 (kg)</b>	<b>N2O (kg)</b>	<b>GHG MTCDE</b>
2001	2	49,187,438	375	72	49,218.31
2001	3	4,864,692	-470	7	4,855.14
2002	1	22,711,384	2,325	80	22,793.21
2002	2	50,695,986	386	74	50,727.80
2002	3	5,013,889	-495	8	5,003.79
2003	1	23,430,652	2,409	83	23,515.47
2003	2	50,093,108	382	73	50,124.55
2003	3	4,954,263	-496	8	4,944.13
2004	1	21,822,922	2,226	76	21,901.24
2004	2	48,431,868	369	71	48,462.27
2004	3	4,789,965	-523	7	4,779.08
2005	1	21,301,128	2,174	75	21,377.85
2005	2	47,724,581	364	70	47,754.53
2005	3	4,720,014	-618	7	4,706.72
2006	1	19,464,436	1,990	71	19,535.45
2006	2	47,416,828	361	70	47,446.59
2006	3	4,689,576	-575	7	4,677.32
2007	1	20,000,214	2,044	72	20,072.87
2007	2	40,679,074	741	574	40,868.80
2007	3	4,023,205	-408	57	4,029.98
2008	1	20,175,197	2,062	73	20,248.42
2008	2	35,578,990	648	502	35,744.93
2008	3	3,518,801	-452	50	3,522.36
2009	1	20,827,486	2,126	74	20,902.69
2009	2	34,677,316	672	521	34,849.27
2009	3	3,429,625	-561	52	3,430.97

<b>Fiscal Year</b>	<b>Scope</b>	<b>CO2 (kg)</b>	<b>CH4 (kg)</b>	<b>N2O (kg)</b>	<b>GHG MTCDE</b>
2010	1	21,451,957	2,189	75	21,529.10
2010	2	35,917,132	687	532	36,092.90
2010	3	2,365,891	-540	35	2,362.88
2011	1	20,488,151	2,079	65	20,559.40
2011	2	39,011,938	746	578	39,202.85
2011	3	2,569,748	-656	38	2,564.73
2012	1	17,799,536	1,805	55	17,861.18
2012	2	39,561,132	757	586	39,754.73
2012	3	3,596,123	-490	53	3,599.77
2013	1	20,844,609	2,108	62	20,915.71
2013	2	39,638,367	758	587	39,832.34
2013	3	3,603,144	-447	54	3,607.93
2014	1	22,298,423	2,252	64	22,373.76
2014	2	35,609,088	747	508	35,779.08
2014	3	1,502,848	-390	22	1,499.56
2015	1	19,206,948	1,942	56	19,272.30
2015	2	34,142,309	717	487	34,305.30
2015	3	1,440,944	-408	21	1,436.93
2016	1	18,457,083	1,867	55	18,520.02
2016	2	35,249,550	740	503	35,417.82
2016	3	1,487,674	-407	21	1,483.87
2017	1	18,342,014	1,850	52	18,792.84
2017	2	38,494,576	808	549	38,678.34
2017	3	1,679,413	-523	32	2,014.27



UNH Sustainability Institute (<https://sustainableunh.unh.edu/calculator>)

Questions? [Tell us here \(https://unhsimap.org/cmap/resources/support\)](https://unhsimap.org/cmap/resources/support).

SIMAP | The Sustainability Institute at the University of New Hampshire  
131 Main Street, Durham, NH 03824 | P: 603-862-8564 | F: 603-862-0785