



OUR ASPIRATIONS

As the University of Miami looks toward its centennial in 2025, it is guided by four aspirations.

HEMISPHERIC

Our location in Miami gives us a distinct geographic capacity to connect institutions, individuals, and ideas across the Americas and throughout the world. Many universities seek international engagement, but the University of Miami is uniquely positioned to be a global university with a distinct hemispheric advantage.

EXCELLENT

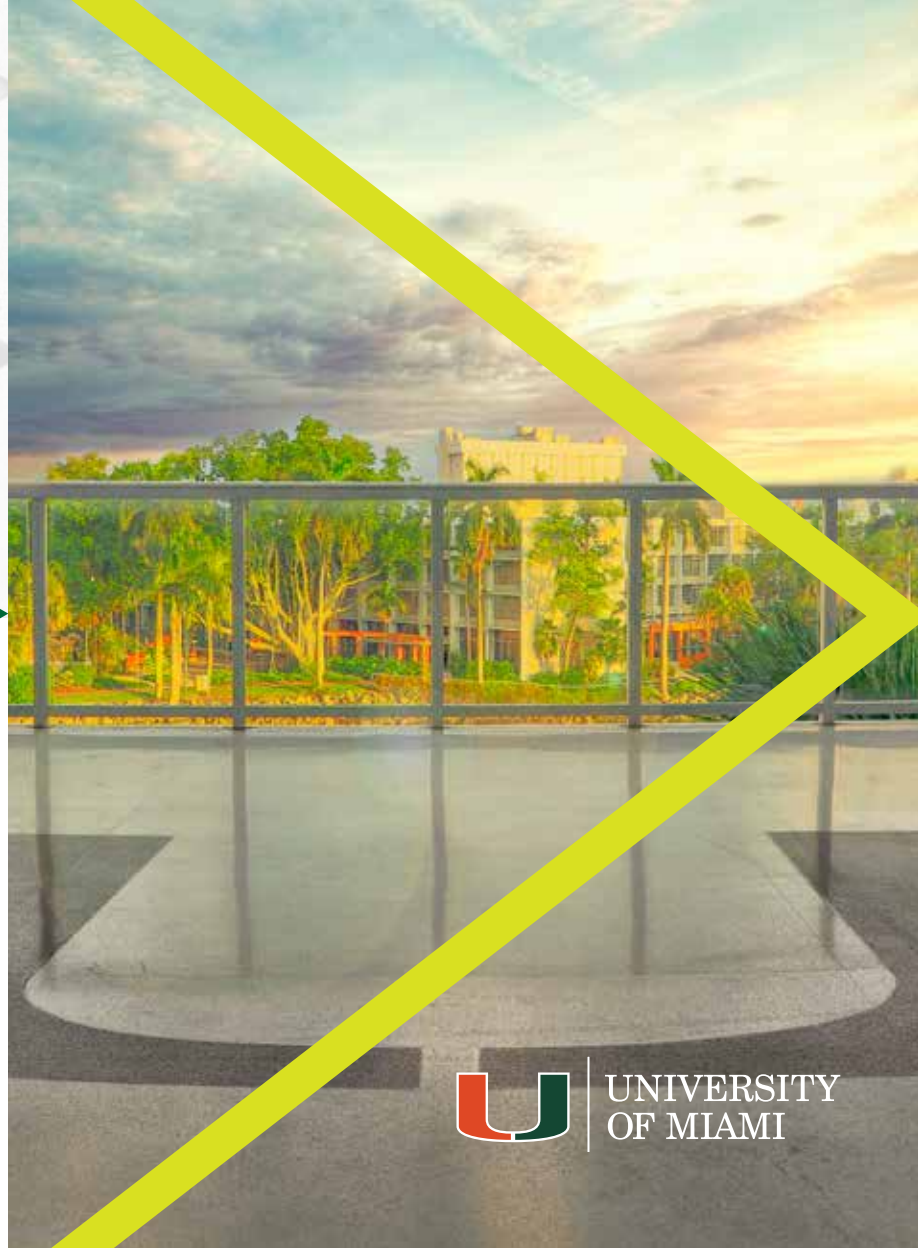
A drive for excellence permeates every domain of our work—from research to public service, from teaching to athletics, from health care to the arts. The continued pursuit of excellence will be marked by building bridges across our schools and colleges, across disciplines, and across modes of learning.

RELEVANT

From its very origins, the University has served the local and global communities to which it belongs. As we pursue the advancement of fundamental knowledge and the search for meaning, we must make a deliberate effort to translate science and scholarship into solutions.

EXEMPLARY

Integrity, respect, diversity, tolerance, and resilience are qualities at the heart of the University. As we seek to expand opportunity for all, we will also work to foster inclusive, respectful, and safe environments throughout our campuses, where reflective and challenging conversations can be held.



UNIVERSITY OF MIAMI



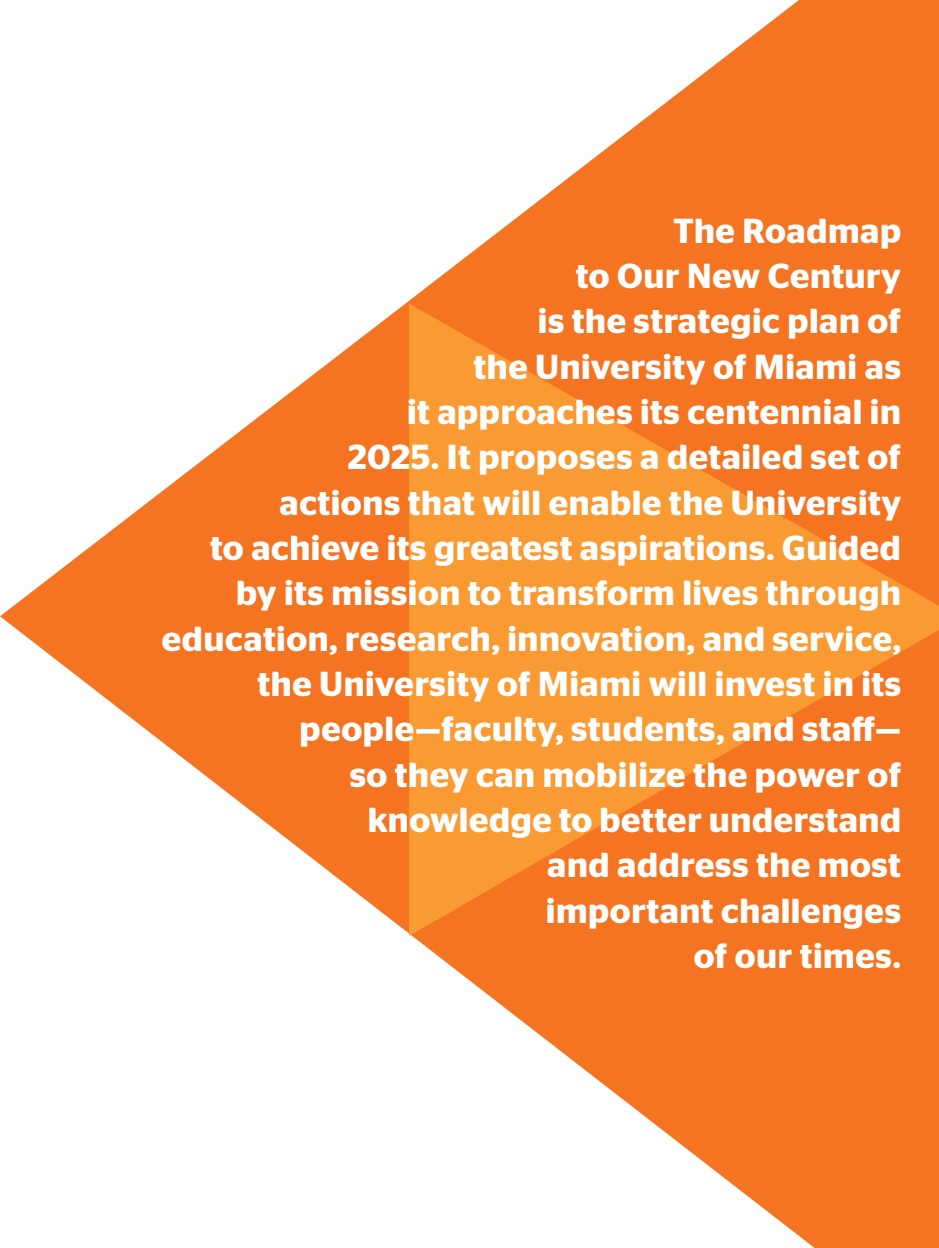
R O A D M A P

T O O U R N E W

C E N T U R Y

▶ Learn more and share in our progress at

roadmap.miami.edu



The Roadmap to Our New Century is the strategic plan of the University of Miami as it approaches its centennial in 2025. It proposes a detailed set of actions that will enable the University to achieve its greatest aspirations. Guided by its mission to transform lives through education, research, innovation, and service, the University of Miami will invest in its people—faculty, students, and staff—so they can mobilize the power of knowledge to better understand and address the most important challenges of our times.

OUR INITIATIVES

The Roadmap to Our New Century is driven by our capacity for resilience and renewal in the face of unprecedented changes affecting our community and all of higher education. Built upon a commitment to the foundational principles of diversity, sustainability, and excellence in teaching, we have embraced a series of strategic priorities and transformative initiatives that are distinct to our University.



Addressing the changing landscape of higher education, research, and health care demands leading-edge operational and financial systems, superior planning, strategic decision-making, efficient use of resources, and more directed change. These measures will help build the platforms for success that will enable our transformative initiatives to deliver on our core mission.

- Operational Efficiency**
Improve the effectiveness and efficiency of administrative and operational processes that are critical to our long-term success
Further expand our commitment and the major efforts already underway to advance environmental responsibility across our University and reduce our carbon footprint
- Financial Sustainability**
Grow our endowment to provide financial stability while enabling us to make strategic investments, pursue opportunities, and respond to challenges
- Culture of Belonging**
Deepen our commitment to diversity and inclusion by improving faculty, student, and staff experiences; fostering an environment that embraces the principles of transparency and accountability; and building a culture of belonging where all members of the University community feel valued and can add value



Anchored by nationally and globally recognized clinical programs, our academic health system will lead a new era in health care through the optimal mix of high-quality services, outstanding patient experiences, cutting-edge research, and the education of professional leaders.

- Leading the Transformation of Health Care**
Identify and grow high-quality, focused clinical programs that deliver novel therapies not available at other health systems
Establish UHealth as a destination medical community, not only for residents of South Florida but also for patients from across the state, the nation, and the hemisphere
Provide quality access and outstanding care and experiences for all of our patients
Achieve a high level of operational and financial performance



The array of disciplines throughout our 11 schools and colleges positions the University of Miami to serve as a model for scholarly and artistic endeavors, and for integrated and interdisciplinary research that translates into actionable solutions.

- 100 Talents**
Attract, retain, and recognize excellence in research, scholarship, policy, practice, and artistic creation by funding at least 100 new endowed faculty chairs by our centennial
- STEM@UM**
Make strategic investments in fundamental science, technology, engineering, and mathematics through a coordinated set of interdisciplinary, University-wide institutes
- Interdisciplinary Inquiry**
Support teams of scholars of multiple disciplines in collaborative inquiry to address the complex challenges of society



We will shape the future of education and pedagogy by providing an outstanding undergraduate experience and high-quality graduate programs, by covering the entire adult life cycle, and by using innovative approaches that drive student success through engaged learning.

- Enabling Educational Excellence**
Expand undergraduate scholarships to continue building the kinds of bridges that allow for the most talented and deserving students from all backgrounds to join our academic community
- Shaping the Educational Revolution**
Advance the art of teaching and the science of learning in partnership with students, alumni, and others throughout their lives, and invest in academic technology and new educational approaches based on outcomes research



Our distinct geographic location positions us as a connector between institutions, individuals, and ideas across the Americas and throughout the world.

- Hemispheric Innovation Hub**
Create a Hemispheric Innovation Hub that supports the efforts of our faculty as they translate scholarship into solutions, and that seeks strategic partnerships to promote innovation, entrepreneurship, and new ventures in Miami and throughout the hemisphere
- Hemispheric University Platform**
Create the Hemispheric University Platform, which will leverage our location to foster student exchange and collaborative research through a consortium of select institutions—the Hemispheric University Consortium
Through this platform, support University-wide study of the hemisphere and provide opportunities for research, education, innovation, and health care across the hemisphere in ways that no single institution can do alone

