



The Mississippi Water Security Institute: Report on Year 1; Plans for Year 2

**Clifford Ochs, Debra Brown Young,
Douglass Sullivan-González**



**THE UNIVERSITY OF
MISSISSIPPI**



What is “Water Security”?



Note: Adapted from UN-Water 2013. Retrieved from: <http://www.unwater.org/topics/water-security/en>

MS Water Security Institute

Mission Statement

*The Mississippi Water Security Institute (MS WSI) will train high-performing undergraduate students to ask and answer an over-riding question: **How can Mississippi ensure that our water resources bolster our economy while remaining sufficient and safe?***

Using a case-based design, the WSI will be a “laboratory” in water security, confronting students with the problems of ensuring water quality and quantity (long-and short-term) to meet the needs of attracting business/industry while supporting public health, community development and environmental stewardship.

Our Goals: Investigate, Discover, Contribute

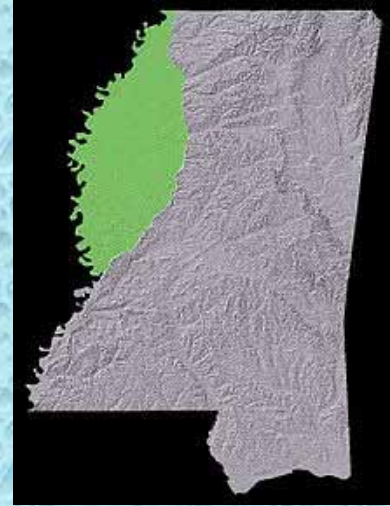
- ***Investigate*** MS water security issues in an interdisciplinary way at the undergraduate level.
- ***Discover*** links between water security and societal “well-being”.
- ***Contribute*** to smart water resource use and management; college and career decisions.

Organization of MS WSI

- Intensive 2-week program at UM
 - Students receive room, board, stipend.
- Includes lectures, discussion, field trips, research
- Each year (of 3) focuses on a **particular region** of MS.



**YEAR 1 (2016) focus:
Mississippi Delta**



**YEAR 2 (2017) focus:
Urban water issues**



YEAR 3 (2018) focus:

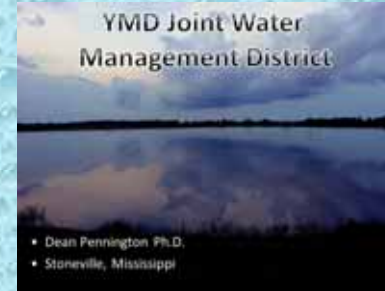


The 2016 group



***15 students
4 universities
14 majors!***

Speakers (some) in 2016





Mississippi Water Security Institute White Paper

May 2016

Funded by:

Robert M. Hearin Support Foundation

Students:

Yasmeen Abdo, Sophia Beddoe, Frankie Bush,
Alex Davis, Asean Davis, Sydney Green, Courtney
Grinnell, Eric Hobson, William Kayitare, Caroline
Kelsoe, Nikki Park, Sara Porcheddu, J.D. Rimann,
Jake Thrasher, Flannery Voges-Haupt, Spencer
Williams

Advisors:

Dr. Clifford Ochs, Dr. Debra Young, Abbi McDonald



Water Law
Public Policy

Use and
Management

Economic
well-being

Public
Health and
well-being

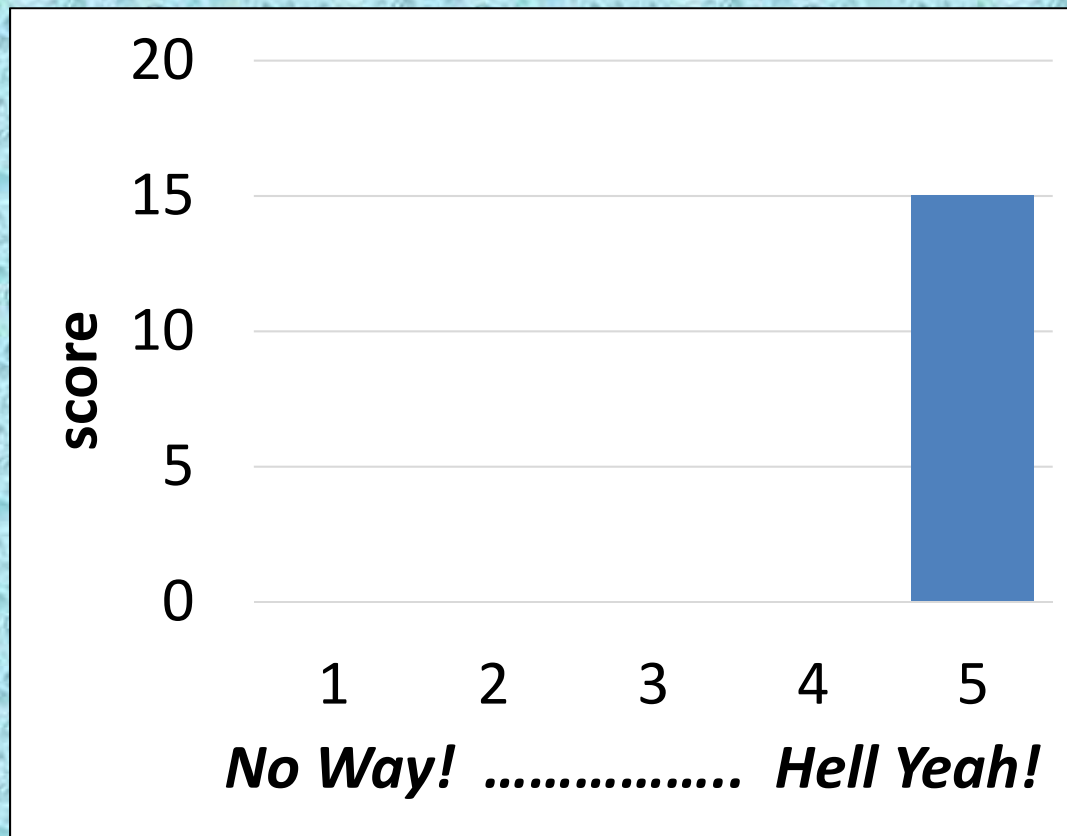
Ecosystems
well-being

Overarching Lessons from 2016

- ***Water Management must address multiple societal needs. Hence:***
 - *It must be inter-disciplinary in approach.*
 - *There must recognize diverse constituents and perspectives.*
 - *Cooperation and clear communication among multiple stakeholders is key.*

2016 Project Evaluation

Would you recommend WSI to your classmates?



For this first WSI, the location for the “case-based design” was the MS Delta. Was this a good choice?

- *The Delta encompasses a number of water security issues (municipal, agricultural, etc.) It is important to grow awareness about the impact agriculture (primarily irrigation) has on water supply. If we take nothing else from WSI, we have learned to be aware of the amount of water we consume when we pick up a fork.*
- *The Delta was a great choice; however there was a cultural aspect that was missed.*
- *It was an eye-opener how alarming the water situation is not only in the Delta but on a global scale.*

We welcome your comments and suggestions. What did you like? What worked for you? What would you change?

- *I enjoyed the interdisciplinary focus of the Institute. I suggest providing more time to discuss new information as well as a day off (the cohort is worn-down by the final couple of days!)*
- *I truly enjoyed the entire workshop. Although each day was long and information filled, ample breaks and engaging speakers maintained our attention.*
- *I wish we had talked to a wider variety of individuals in the community including those in poverty, small time farmers, as well as African-Americans who make up the majority of the Delta population. All in all, thank you for this opportunity. It has increased my awareness of water and propelled continued researching this topic.*
- *Keep the canoe trip. That was awesome.*

What's next? MS WSI 2017



Case studies:
Jackson and Oxford



- 17 students
- 5 schools



Acknowledgements

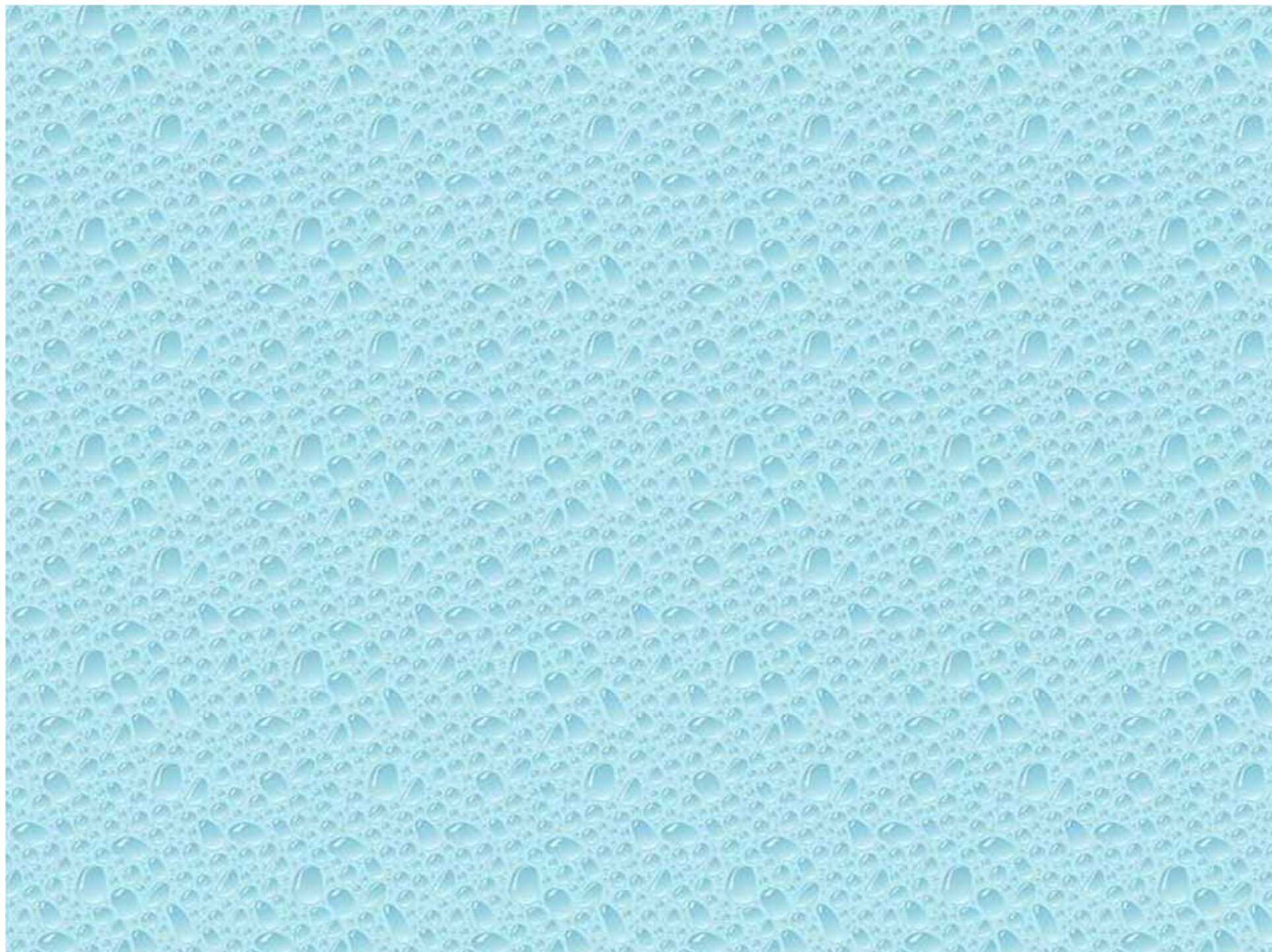
The Robert M. Hearin Support Foundation

Sally McDonnell Barksdale Honors College

MS WSI Advisory Board

Our students

MANY VERY GENEROUS COLLEAGUES!



Acknowledgements

- The Robert M. Hearin Support Foundation
- Sally McDonnell Barksdale Honors College
- MS WSI Advisory Board
- Caroline Kelsoe (MSU student)
- ***MANY VERY GENEROUS COLLEAGUES!***

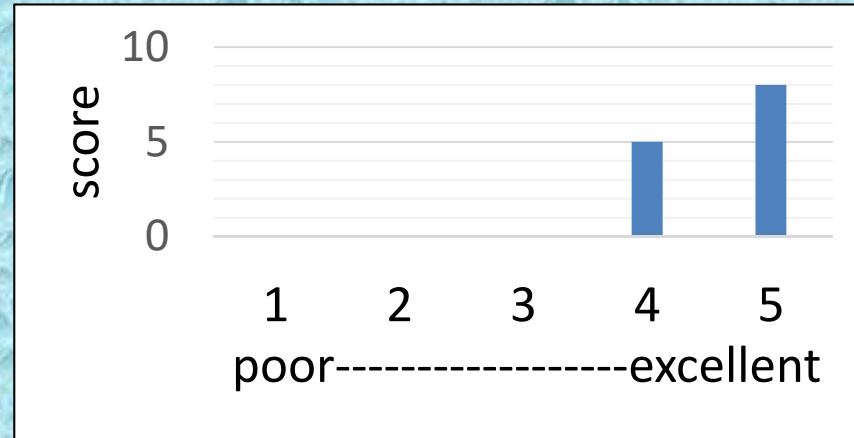


Questions?



2016 Project Assessment

Overall, how would you rate our success in achieving the goals of the MS WSI mission statement?



Would you recommend the WSI to your classmates?



***To what degree did the presentations on campus
OVERALL assist you in understanding the needs and
challenges of water security?***

- *With most of us coming in with little background knowledge, these presentations gave us a solid foundation with some more detailed info/examples.*
- *It was an eye-opener how alarming the water situation is not only in the Delta but on a global scale.*
- *I would have enjoyed hearing more from “average” folks in the Delta. I would like to hear from the folks who are actually working on the farms or those who are drinking local water that “looks like weak sweet tea”.*

To what degree did the field trips **OVERALL** assist you in understanding the needs and challenges of the area?

- *It was much better to visit the places we talked about in lecture, just to make it all make more sense and to put an actual place to the issues we spoke about. Talking to real farmers was a huge advantage.*
- *Hands-on, in-the-field experience and visuals is the best way to learn the concepts that we covered.*
- *I didn't learn as much on the trips as I did in the lectures.*