



# Sustainability at UT Dallas

---

Creating a better world by connecting education and expertise to principles of sustainability.



# Today's Agenda

---

## Key takeaways:

- What is Sustainability?
- Sustainability at UTD
- The Green Office Program
- Contact Us



# What is sustainability?

---

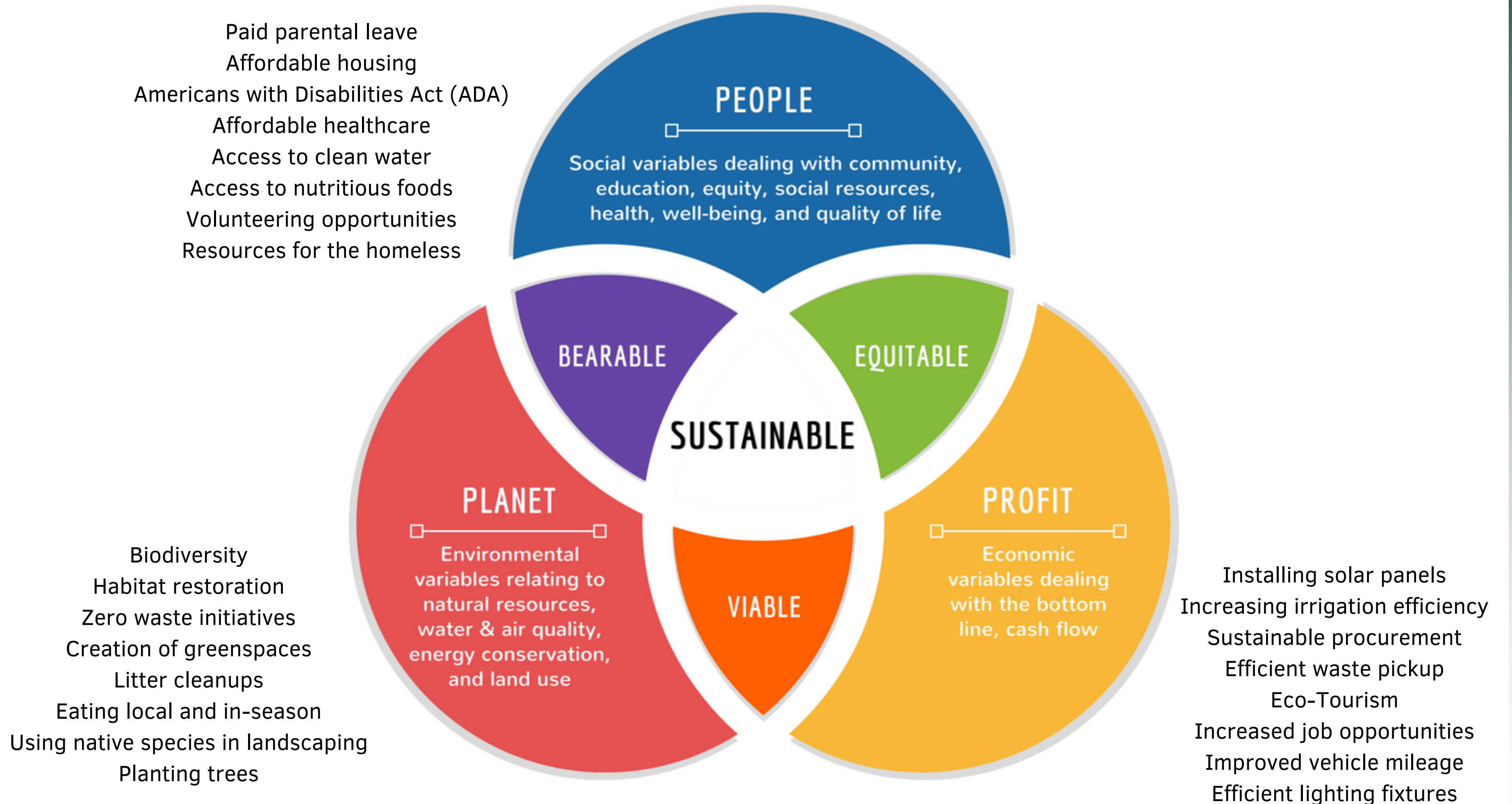
Equity, economy, and environment.















# SUSTAINABLE DEVELOPMENT GOALS



**UT DALLAS SDG OBSERVATORY**

<https://sustainability.utdallas.edu/progress/>



# Nuance in Sustainability

## **SOLAR PANELS**

### **RENEWABLE ENERGY VS. MINING AND DIFFICULT DISPOSAL**

---

Solar panels are a form of capturing renewable energy, but the process of mining the materials to make them is environmentally intensive. They can also be dangerous when disposed of improperly.

## **EATING VEGAN**

### **REDUCING ANIMAL AGRICULTURE VS. HIGH WATER USE**

---

Almond milk, a popular dairy-free milk alternative, is made using almonds, which use 15 gallons of water to produce 16 almonds. 80% of the world's almonds are produced in California, which is already facing historic droughts.

## **DONATING ITEMS**

### **REUSING CLOTHES VS. ECONOMIC DISRUPTION**

---

While you feel like you've done a good deed by gifting your clothes to mass donation sale outlets, your items may be thrown away or sold to developing nations, where cheap, plentiful clothes disrupt the local clothing market.



# Recognizing Nuance in Sustainability

## GREENWASHING

Images of greenery, "natural," "eco-friendly," "biodegradable/compostable," "organic," "clean/clear," "green," vague details, bogus/self certification



## CRADLE TO GRAVE

Lifecycle of a product from material extraction to eventual disposal. Ideally: "cradle to cradle"





# The UT Dallas Office of Sustainability

---

Operations, AASHE STARS, and students.







## MISSION

The Office of Sustainability's mission is to engage the UT Dallas community as a catalyst and champion for environmental stewardship and social responsibility while fostering a culture of sustainability evident in all aspects of the campus experience.

## VISION

Creating a better world by connecting education and expertise to principles of sustainability.





## MISSION

The Office of Sustainability's mission is to engage the UT Dallas community as a catalyst and champion for environmental stewardship and social responsibility while fostering a culture of sustainability evident in all aspects of the campus experience.

## VISION

Creating a better world by connecting education and expertise to principles of sustainability.



# Meet the Team

YOUR ON-CAMPUS SUSTAINABILITY EXPERTS



**GARY COCKE**

Director of Sustainability



**AVERY MCKITRICK**

Sustainability Coordinator



**ECO REPS**

Student Employees

# AASHE STARS

---

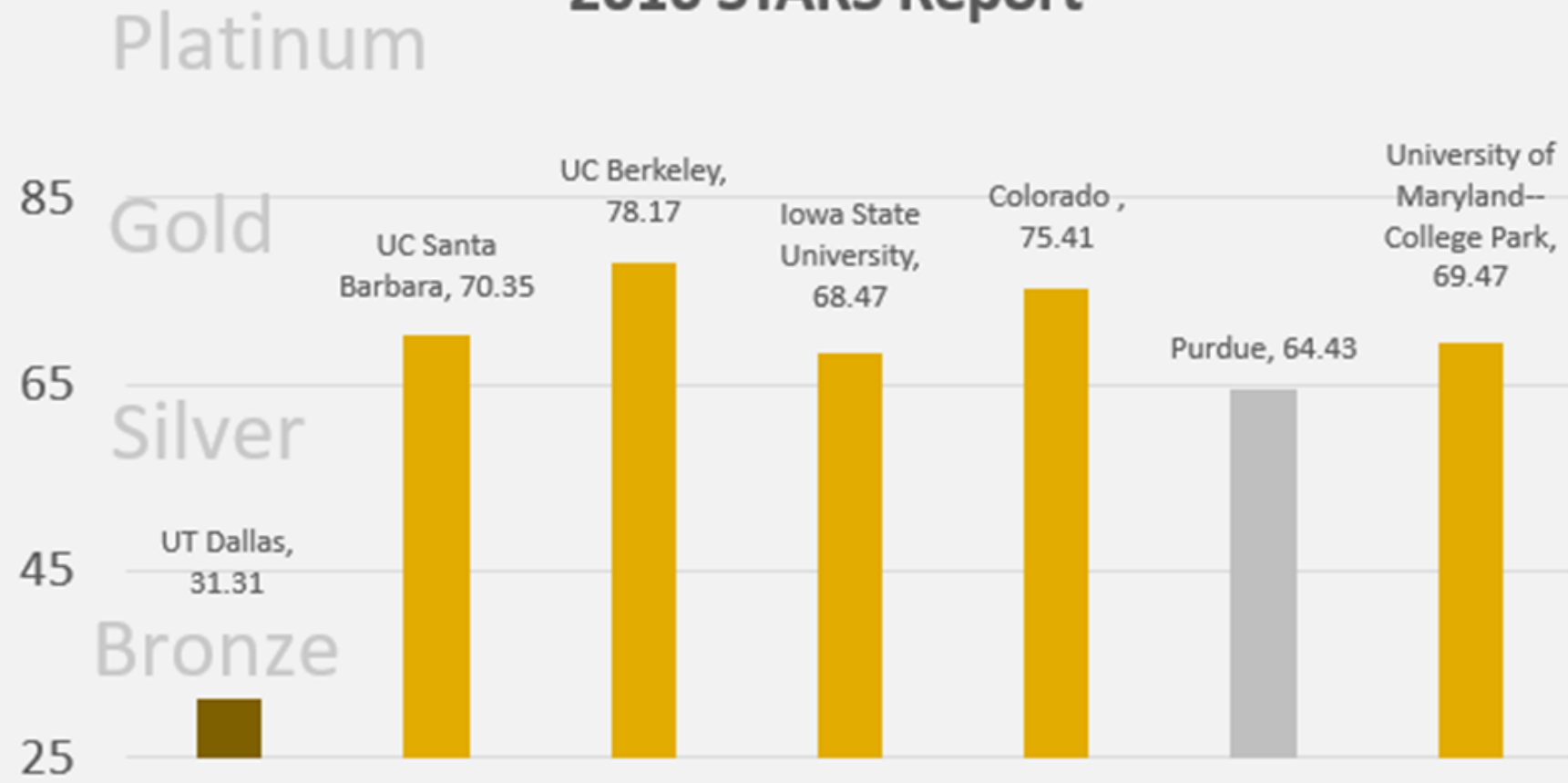
## ABOUT STARS

- 800+ participating institutions in 30+ countries
- 4 categories, 63 credits, 1,000+ data points, 321 pg. Technical Manual
- Academics, operations, engagement, and administration
- Awarded Reporter, Bronze, Silver, Gold, or Platinum according to points

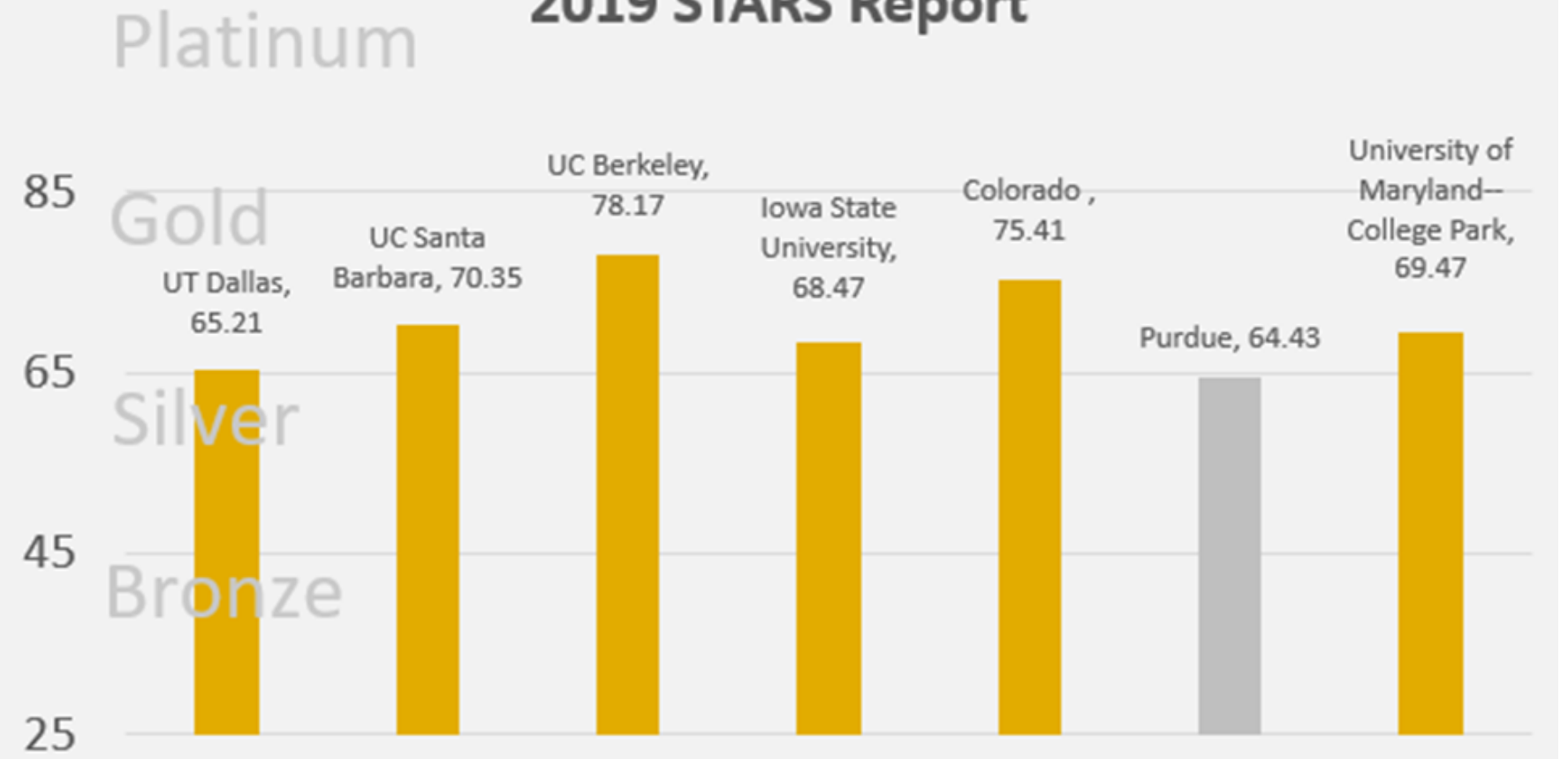




### UT Dallas vs Aspirational Peers 2016 STARS Report



### UT Dallas vs Aspirational Peers 2019 STARS Report



# Sustainability in Operations

---

## WATER

---

Bottle refill stations, low-flush toilets and urinals, dual-flush toilets, low-flow faucets, efficient and strategically planned landscape watering.

## BUILDINGS

---

Seven LEED-certified buildings (Student Services Building, School of Management addition, Edith O'Donnell Arts & Technology Building, RHW/DHW/RCW, Bioengineering and Science Building, Alumni Center, ECSW, Sciences Building).

## RECYCLING

---

Specialty recycling programs (film plastics, batteries, e-waste, etc.), Campus Race to Zero Waste, recycling bins, move-in recycling.

## ENERGY

---

PS1 Photovoltaic panels, solar golf cart charging, ECSN solar panels, solar thermal, electric vehicle charging, LED lighting, reflective roofing.

## COMPOST

---

Comet Composting program, food service composting, landscape waste composting.

## LANDSCAPES

---

University Drive urban forest, Tree Campus Higher Education, ArbNet Arboretum Level 1, monarch waystations and blackland prairie restoration, UV Community Garden, Eco Hub.



# Other Opportunities in Sustainability



## GARDENING

### Community Garden + Eco Hub

---

An opportunity for students, staff, and faculty to rent their own garden plot and an opportunity for students to grow food donated to the NTFB.



## POLLINATORS

### Bee Campus USA

---

Opportunities for students to complete hive inspections and to harvest and bottle honey with on-campus honeybee experts.



## BIKING

### Bicycle-Friendly University

---

Mechanical support for cyclists and bike education for students, staff, and faculty.



# Other Opportunities in Sustainability



## VOLUNTEERING

### Sustainability Service Honors

---

Students who volunteer 250 hours relating to one or more of the SDGs are honored upon graduation.



## SUSTAINABLE WORK

### Green Offices

---

A program to recognize sustainable offices and provide guidance for implementing sustainability at the workplace.



## COMPOSTING

### Comet Composting

---

A program for on-campus residents to compost their food scraps free of charge.



# Sustainability Committee

**Charged with cultivating a culture of environmental responsibility and participation among the campus community.**

Their current initiative is to have UT Dallas sign on to the Post-Landfill Action Network's Break Free from Plastic Pledge to initiate the gradual phase-out of single-use plastics on UTD campus.

Overview

FAQ

[More Information](#)



# The Green Office Program

---

Bring sustainability to your workspace.





# What is it?

**A tool that will help your office in adopting sustainable practices.**

This program is designed to be a fun, user-friendly, and engaging tool to help assess how “green” we are operating on a department, office, and individual level. Offices can rank as platinum, gold, silver, or bronze based on the sustainable practices that have been implemented by the department.



[More Information](#)





# 4 Easy Steps

## Support

Get support from your office leadership to participate in the program.

## Worksheet

Download and complete the Green Office Certification worksheet from our website.

## Submission

Submit completed worksheet to [sustainability@utdallas.edu](mailto:sustainability@utdallas.edu) for review.

## Consultation

(Optional) Review the results from your worksheet with the office to brainstorm how to improve your sustainability score.



	A	B	C	D
1	<b>ID</b>	<b>Credit</b>	<b>Data Requirement</b>	<b>Input</b>
2	W1	Bulk Purchasing	Does your dept. purchase office supplies?	
3			Does your dept. purchase office supplies in bulk to last the year?	
4				
5	W2	Giveaways	Does your dept. purchase giveaway materials?	
6			Does your dept. avoid products with dates and non-annual events printed on them?	
7			Does your dept. purchase giveaways that are made of recycled/reused material?	
8				
9	W3	Condiments	Does your dept. purchase food condiments?	
10			Does your dept. purchase small packets of food condiments?	
11			Does your dept. purchase bottles of food condiments (Ex. Bottle Ketchup)?	
12				
13	W4	Single-Serve Drink	Does your dept. have shared coffee machines?	
14			Does your dept. have shared single-serve coffee machines?	
15			Does your dept. use single serve disposable and/or styrofoam cups?	
16			Does your dept. use single serve coffee packs for the coffee machines?	
17			Does your dept. collect used styrofoam cups for special recycling?	
18			Would your dept. be interested in hosting a styrofoam cup recycling bin?	
19			Does your dept. use compostable single-serve cups and dispose in UTD compost?	
20			Would your dept. be interested in purchasing compostable cups?	
21				
22	W5	Water Bottle Pledge	How many employees use reusable water bottles?	
23			Does your office have any water refill stations nearby? <a href="#">Click Here for Locations</a>	
24			Would your office be interested in an estimate for a water refill station? <a href="#">Click Here For More Info</a>	
25			How many employees have signed the pledge?	
26				
27	W6	Office Supply Reuse	Does your dept. have a process to reuse used office supplies?	
28			Does your dept. have a location to place unused supplies for others use?	
29				
30	W7	Surplus Equipment	Has your dept., in the past year, acquired any supplies from surplus?	
31				





# Contact Us

We'd love to talk about all things sustainability.

## PHONE NUMBER

972-883-5159

## EMAIL ADDRESS

avery.mckitrick@utdallas.edu

## WEBSITE

sustainability.utdallas.edu



@utd\_sustainability



@UTDSustainability



[bit.ly/utd\\_sustainability\\_newsletter](https://bit.ly/utd_sustainability_newsletter)

