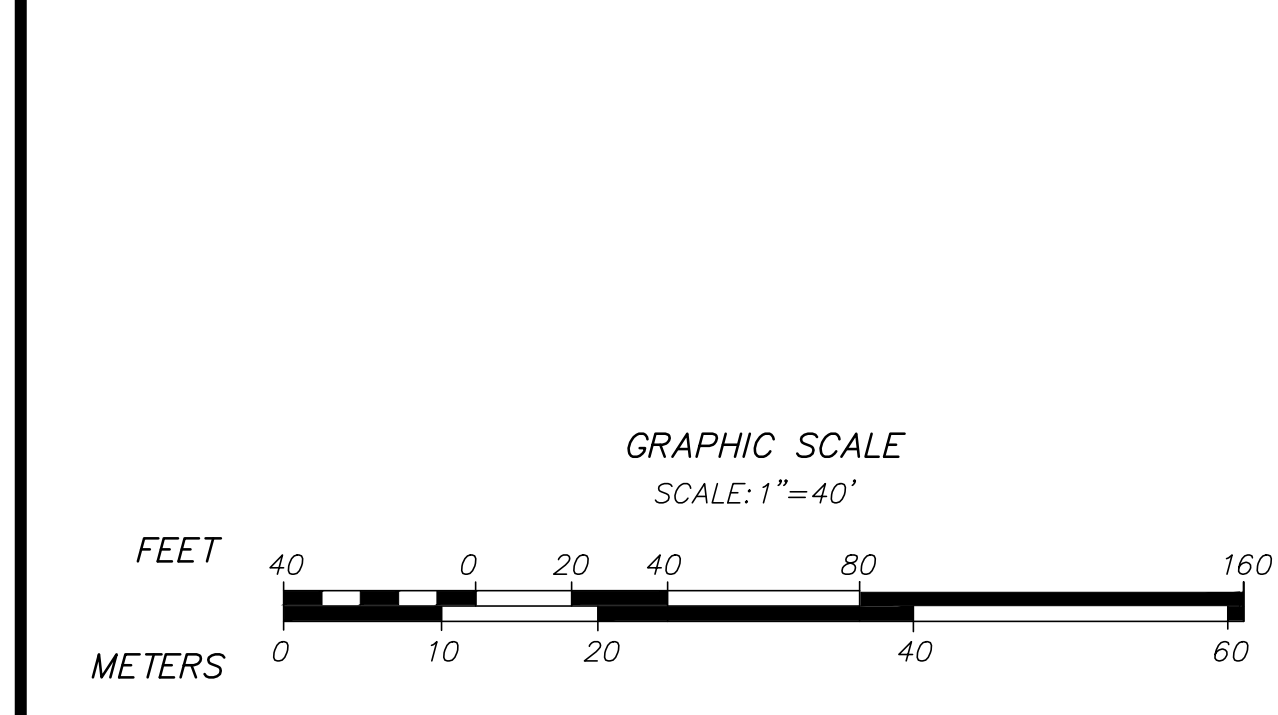


SEE SHEET 16

SEE SHEET 20

SEE SHEET 18



EXISTING LEGEND

---	ENDICOTT PROPERTY LINE
- - -	STATE HIGHWAY LAYOUT
- · - · -	ABUTTER
---	EDGE OF PAVEMENT
---	PAVEMENT MARKINGS
▒	EXISTING BUILDING
▒	ATHLETIC FIELD
▒	ENDICOTT PONDS
▒	STREAM BANK / WETLAND
- - -	100' RESOURCE AREA BUFFER
- - -	200' RIVERFRONT AREA
▒	BORDERING VEGETATED WETLANDS

EXISTING STORMWATER MANAGEMENT LEGEND

—	DRAINAGE LINE
▒	CATCH BASIN
▒	YARD DRAIN
●	DRAINAGE MANHOLE
●	WATER QUALITY UNIT
●	DRYWELL / LEACHING CATCH BASIN
—	PIPE OUTLET
▒	TRENCH DRAIN
▒	POROUS PAVEMENT / POROUS PAVERS
▒	RIP-RAP INFILTRATION BMP
▒	SUBSURFACE INFILTRATION SYSTEM BMP
▒	SUBSURFACE DETENTION SYSTEM BMP
▒	DETENTION BASIN BMP
▒	INFILTRATION BASIN BMP
▒	RAIN GARDEN BMP
(NF)	NOT FOUND
(TYP)	TYPICAL
—	TERMINUS UNKNOWN
→	FLOW DIRECTION

- NOTES:**
- SEE SHEET 1 FOR GENERAL NOTES.
 - SEE SHEET 4 FOR RESOURCE AREA NOTES.
 - STORMWATER SYSTEM INSPECTION FOR PLAN COMPLETENESS WERE PERFORMED ON VARIOUS DATES IN 2021 AND 2022. VARIOUS DRAINAGE FEATURES NOT OBSERVED, ARE NOTED BY 'NOT FOUND' OR (NF). THE EXISTING STORMWATER MANAGEMENT SYSTEM WAS COMPILED BASED ON A VARIETY OF SOURCES, AND FOR A COMPLETE AS POSSIBLE EXISTING STORMWATER MANAGEMENT SYSTEM PLAN, THEY REMAIN ON THE PLAN.

REVISIONS

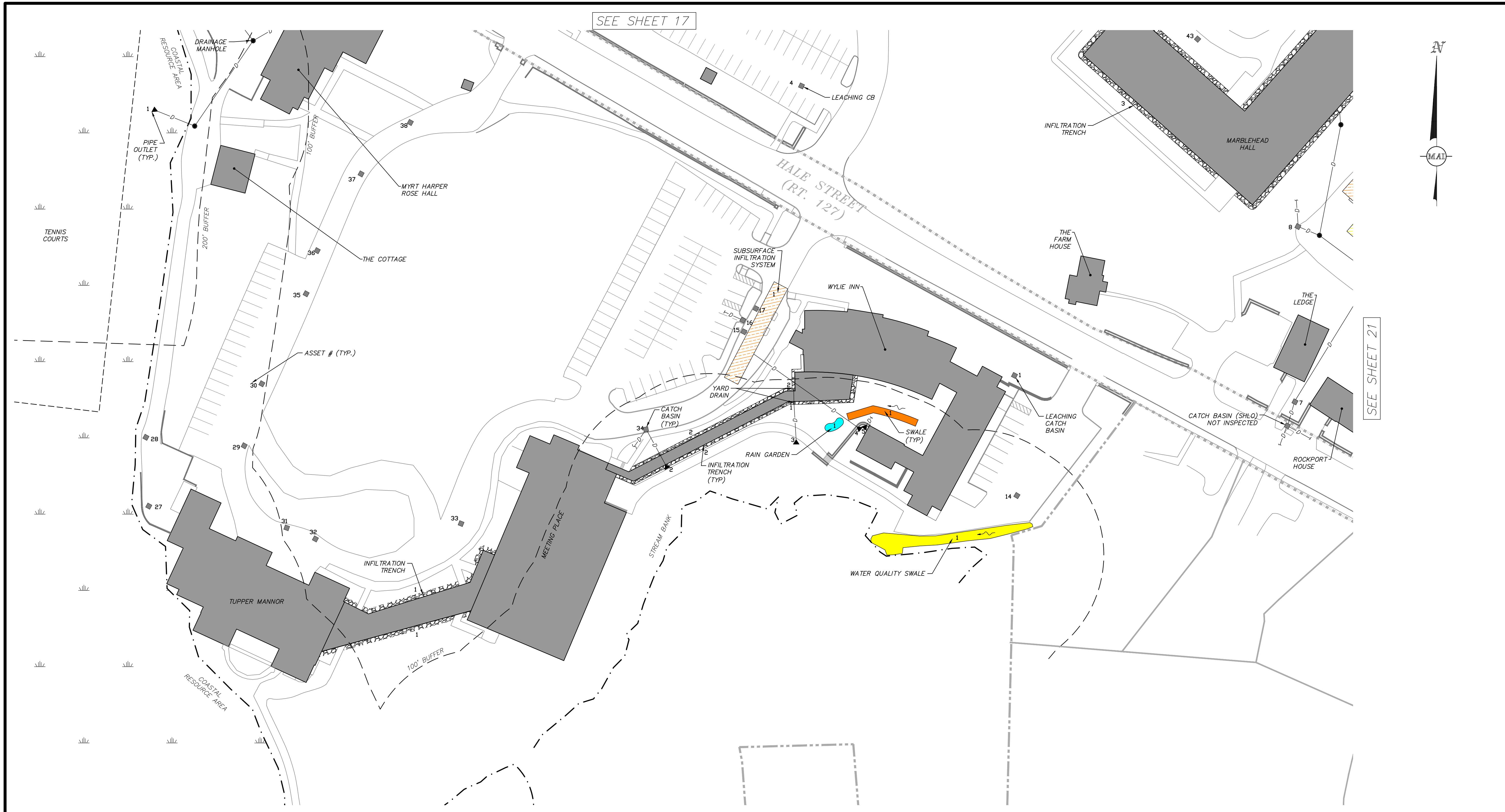
NO.	DATE	DESCRIPTION	BY

ENDICOTT COLLEGE
 STORMWATER FACILITY PLAN
 LOCATED IN
 BEVERLY, MASSACHUSETTS
 (ESSEX COUNTY)
 PREPARED FOR
 ENDICOTT COLLEGE

MERIDIAN ASSOCIATES
 500 CUMMINGS CENTER, SUITE 5950
 BEVERLY, MASSACHUSETTS 01915
 TELEPHONE: (978) 299-0447
 WWW.MERIDIANASSOC.COM

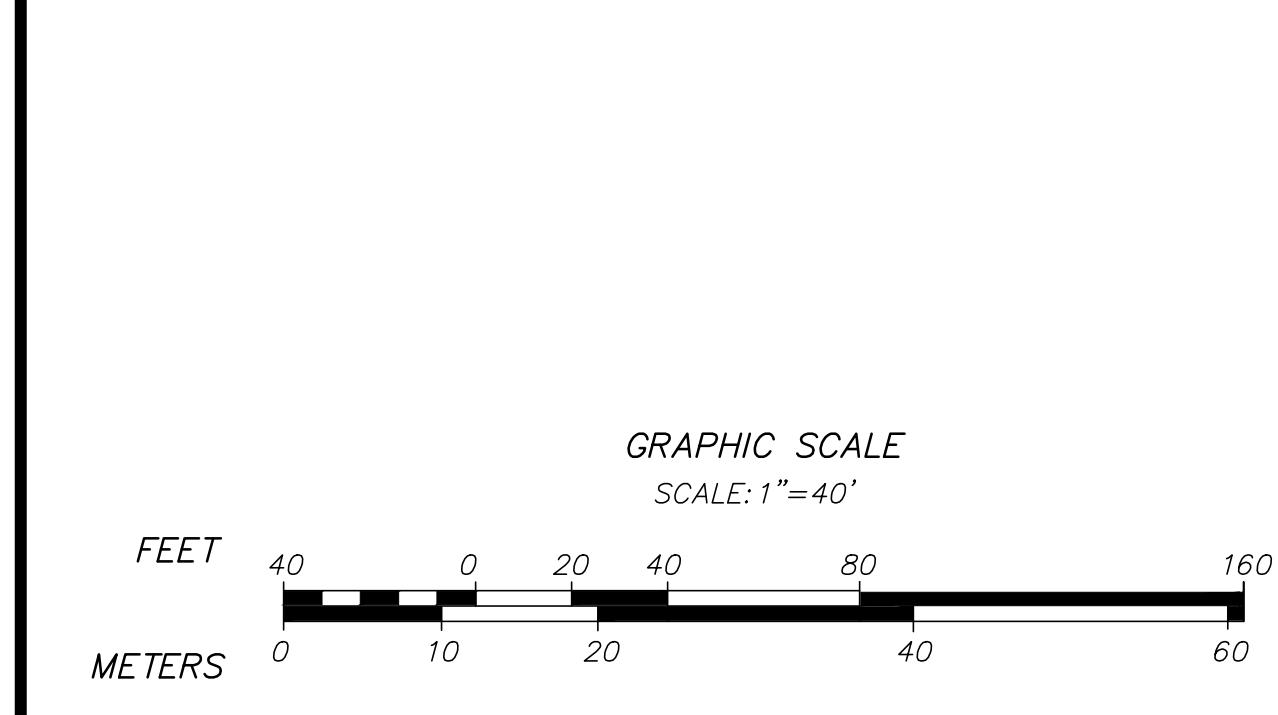
DESIGNED BY: TG
 CHECKED BY: CB

DATE: DECEMBER 16, 2022
 SCALE: 1"=40'
 SHEET No. 17 of 28
 PROJECT No. 5402



SEE SHEET 17

SEE SHEET 21



EXISTING LEGEND

---	ENDICOTT PROPERTY LINE
---	STATE HIGHWAY LAYOUT
---	ABUTTER
---	EDGE OF PAVEMENT
---	PAVEMENT MARKINGS
█	EXISTING BUILDING
█	ATHLETIC FIELD
█	ENDICOTT PONDS
---	STREAM BANK/WETLAND
---	100' RESOURCE AREA BUFFER
---	200' RIVERFRONT AREA
---	BORDERING VEGETATED WETLANDS

EXISTING STORMWATER MANAGEMENT LEGEND

D	DRAINAGE LINE
■	CATCH BASIN
■	YARD DRAIN
●	DRAINAGE MANHOLE
●	WATER QUALITY UNIT
●	DRYWELL/LEACHING CATCH BASIN
○	PIPE OUTLET
---	TRENCH DRAIN
---	POROUS PAVEMENT / POROUS PAVERS
---	RIP-RAP/INFILTRATION BMP
---	SUBSURFACE INFILTRATION SYSTEM BMP
---	SUBSURFACE DETENTION SYSTEM BMP
---	DETENTION BASIN BMP
---	INFILTRATION BASIN BMP
---	RAIN GARDEN BMP
(NF)	NOT FOUND
(TYP)	TYPICAL
---	TERMINUS UNKNOWN
---	FLOW DIRECTION

- NOTES:**
- SEE SHEET 1 FOR GENERAL NOTES.
 - SEE SHEET 4 FOR RESOURCE AREA NOTES.
 - STORMWATER SYSTEM INSPECTION FOR PLAN COMPLETENESS WERE PERFORMED ON VARIOUS DATES IN 2021 AND 2022. VARIOUS DRAINAGE FEATURES NOT OBSERVED, ARE NOTED BY "NOT FOUND" OR "(NF)". THE EXISTING STORMWATER MANAGEMENT SYSTEM WAS COMPILED BASED ON A VARIETY OF SOURCES, AND FOR A COMPLETE AS POSSIBLE EXISTING STORMWATER MANAGEMENT SYSTEM PLAN, THEY REMAIN ON THE PLAN.

REVISIONS

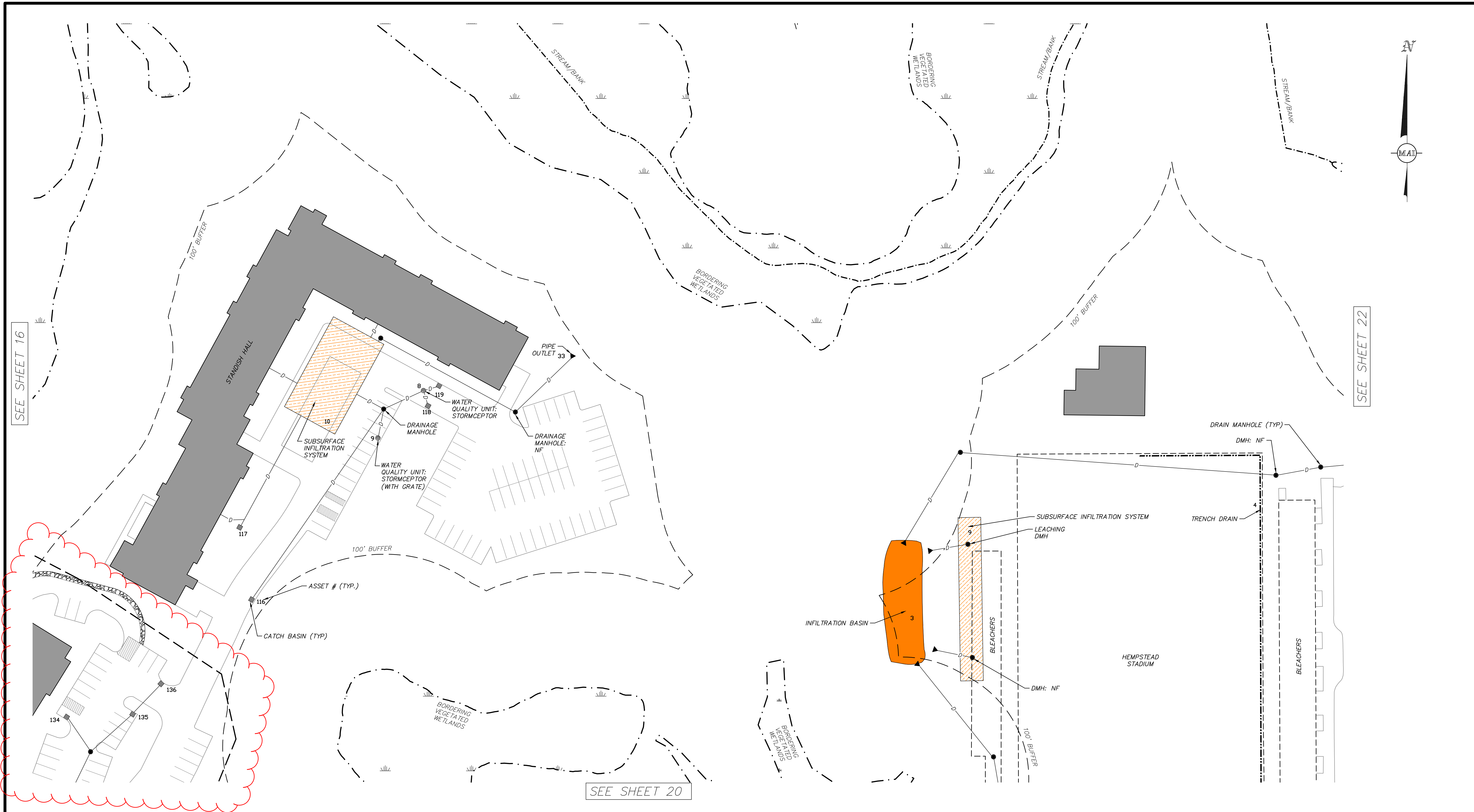
NO.	DATE	DESCRIPTION	BY

ENDICOTT COLLEGE
STORMWATER FACILITY PLAN
LOCATED IN
BEVERLY, MASSACHUSETTS
(ESSEX COUNTY)
PREPARED FOR
ENDICOTT COLLEGE

MERIDIAN ASSOCIATES
500 CUMMINGS CENTER, SUITE 5950
BEVERLY, MASSACHUSETTS 01915
TELEPHONE: (978) 299-0447
WWW.MERIDIANASSOC.COM

DESIGNED BY: TG
CHECKED BY: CB

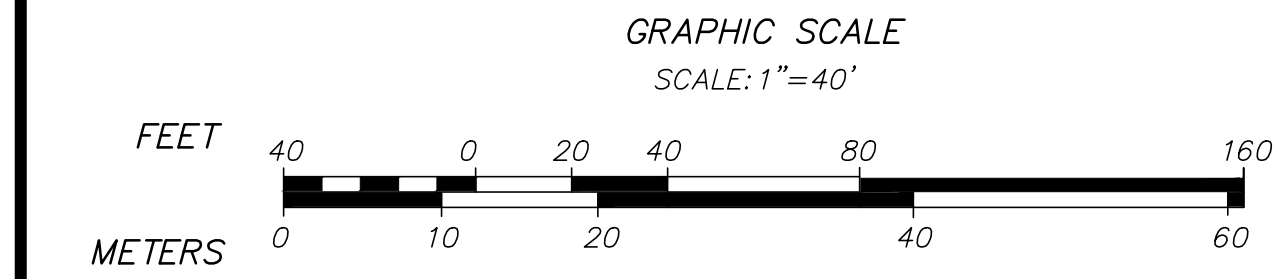
DATE: DECEMBER 16, 2022
SCALE: 1"=40'
SHEET No. 18 of 28
PROJECT No. 5402



SEE SHEET 16

SEE SHEET 22

SEE SHEET 20



EXISTING LEGEND

---	ENDICOTT PROPERTY LINE
- - -	STATE HIGHWAY LAYOUT
- - -	ABUTTER
---	EDGE OF PAVEMENT
---	PAVEMENT MARKINGS
█	EXISTING BUILDING
█	ATHLETIC FIELD
█	ENDICOTT PONDS
---	STREAM BANK/WETLAND
---	100' RESOURCE AREA BUFFER
---	200' RIVERFRONT AREA
---	BORDERING VEGETATED WETLANDS

EXISTING STORMWATER MANAGEMENT LEGEND

---	DRAINAGE LINE
█	CATCH BASIN
█	YARD DRAIN
●	DRAINAGE MANHOLE
●	WATER QUALITY UNIT
●	DRYWELL/LEACHING CATCH BASIN
---	PIPE OUTLET
---	TRENCH DRAIN
█	POROUS PAVEMENT / POROUS PAVERS
█	RIP-RAP/INFILTRATION BMP
█	SUBSURFACE INFILTRATION SYSTEM BMP
█	SUBSURFACE DETENTION SYSTEM BMP
█	DETENTION BASIN BMP
█	INFILTRATION BASIN BMP
█	RAIN GARDEN BMP
(NF)	NOT FOUND
(TYP)	TYPICAL
---	TERMINUS UNKNOWN
---	FLOW DIRECTION

NOTES:

- SEE SHEET 1 FOR GENERAL NOTES.
- SEE SHEET 4 FOR RESOURCE AREA NOTES.
- STORMWATER SYSTEM INSPECTION FOR PLAN COMPLETENESS WERE PERFORMED ON VARIOUS DATES IN 2021 AND 2022. VARIOUS DRAINAGE FEATURES NOT OBSERVED, ARE NOTED BY "NOT FOUND" OR "(NF)". THE EXISTING STORMWATER MANAGEMENT SYSTEM WAS COMPILED BASED ON A VARIETY OF SOURCES, AND FOR A COMPLETE AS POSSIBLE EXISTING STORMWATER MANAGEMENT SYSTEM PLAN, THEY REMAIN ON THE PLAN.

REVISIONS

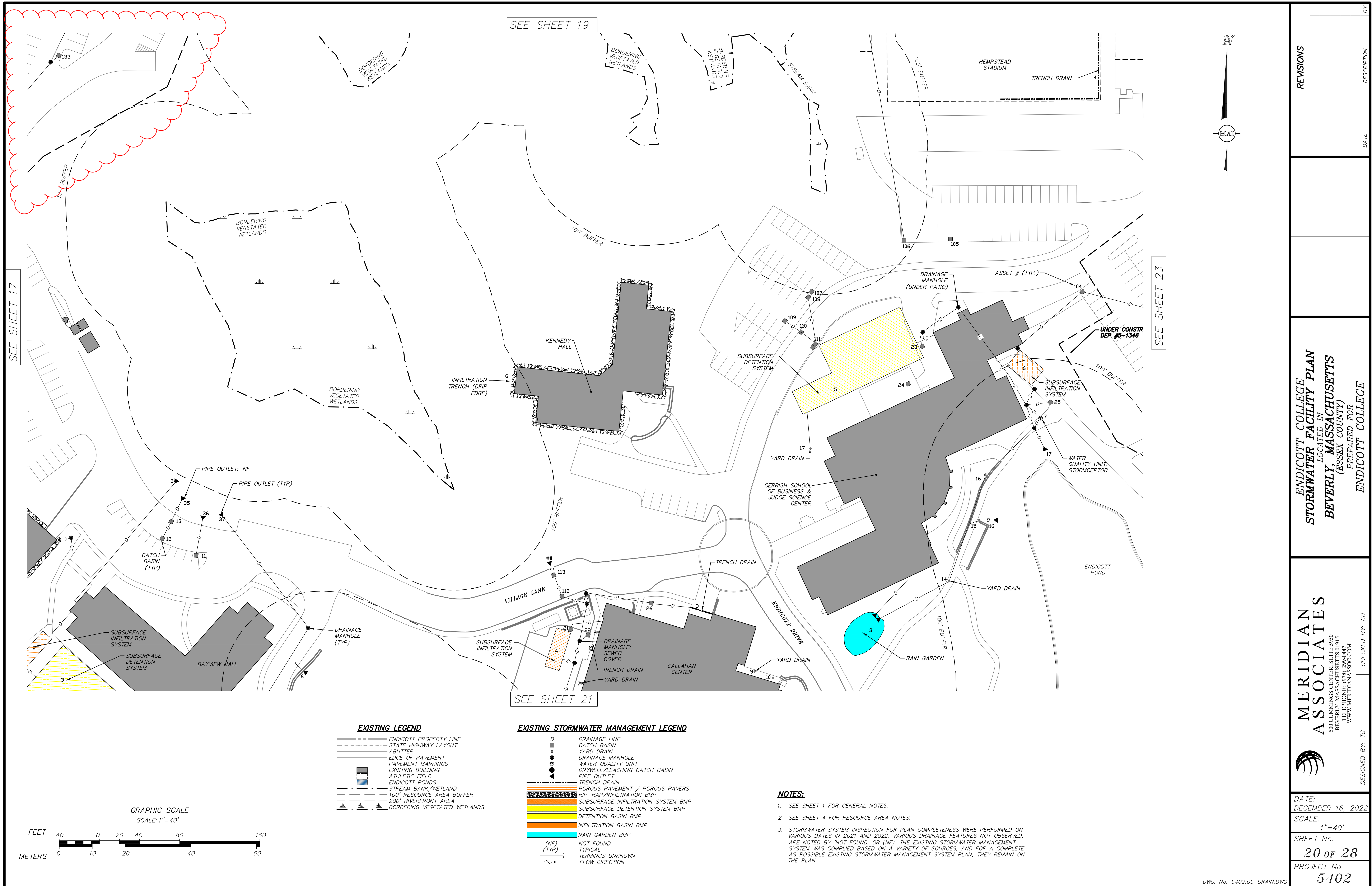
NO.	DATE	DESCRIPTION	BY

ENDICOTT COLLEGE
STORMWATER FACILITY PLAN
 LOCATED IN
BEVERLY, MASSACHUSETTS
 (ESSEX COUNTY)
 PREPARED FOR
ENDICOTT COLLEGE

MERIDIAN ASSOCIATES
 500 CUMMINGS CENTER, SUITE 5950
 BEVERLY, MASSACHUSETTS 01915
 TELEPHONE: (978) 299-0447
 WWW.MERIDIANASSOC.COM

DESIGNED BY: TG
 CHECKED BY: CB

DATE: DECEMBER 16, 2022
 SCALE: 1"=40'
 SHEET No. **19 of 28**
 PROJECT No. **5402**

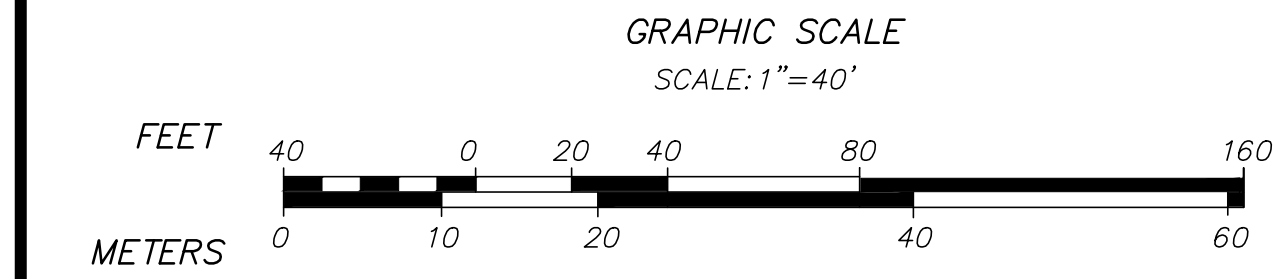


SEE SHEET 17

SEE SHEET 19

SEE SHEET 23

SEE SHEET 21



EXISTING LEGEND

- ENDICOTT PROPERTY LINE
- - - STATE HIGHWAY LAYOUT
- - - ABUTTER
- EDGE OF PAVEMENT
- PAVEMENT MARKINGS
- █ EXISTING BUILDING
- █ ATHLETIC FIELD
- █ ENDICOTT PONDS
- STREAM BANK / WETLAND
- 100' RESOURCE AREA BUFFER
- 200' RIVERFRONT AREA
- █ BORDERING VEGETATED WETLANDS

EXISTING STORMWATER MANAGEMENT LEGEND

- D - DRAINAGE LINE
- █ CATCH BASIN
- █ YARD DRAIN
- █ DRAINAGE MANHOLE
- █ WATER QUALITY UNIT
- █ DRYWELL / LEACHING CATCH BASIN
- █ PIPE OUTLET
- █ TRENCH DRAIN
- █ POROUS PAVEMENT / POROUS PAVERS
- █ RIP-RAP / INFILTRATION BMP
- █ SUBSURFACE INFILTRATION SYSTEM BMP
- █ SUBSURFACE DETENTION SYSTEM BMP
- █ DETENTION BASIN BMP
- █ INFILTRATION BASIN BMP
- █ RAIN GARDEN BMP
- (NF) NOT FOUND
- (TYP) TYPICAL
- TERMINUS UNKNOWN
- FLOW DIRECTION

NOTES:

- SEE SHEET 1 FOR GENERAL NOTES.
- SEE SHEET 4 FOR RESOURCE AREA NOTES.
- STORMWATER SYSTEM INSPECTION FOR PLAN COMPLETENESS WERE PERFORMED ON VARIOUS DATES IN 2021 AND 2022. VARIOUS DRAINAGE FEATURES NOT OBSERVED, ARE NOTED BY "NOT FOUND" OR "(NF)". THE EXISTING STORMWATER MANAGEMENT SYSTEM WAS COMPILED BASED ON A VARIETY OF SOURCES, AND FOR A COMPLETE AS POSSIBLE EXISTING STORMWATER MANAGEMENT SYSTEM PLAN, THEY REMAIN ON THE PLAN.

REVISIONS

NO.	DATE	DESCRIPTION	BY

ENDICOTT COLLEGE
STORMWATER FACILITY PLAN
 LOCATED IN
BEVERLY, MASSACHUSETTS
 (ESSEX COUNTY)
 PREPARED FOR
ENDICOTT COLLEGE

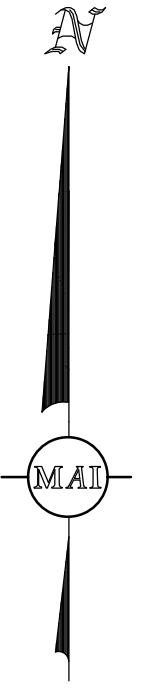
MERIDIAN ASSOCIATES
 500 CUMMINGS CENTER, SUITE 5950
 BEVERLY, MASSACHUSETTS 01915
 TELEPHONE: (978) 299-9447
 WWW.MERIDIANASSOC.COM

DESIGNED BY: TG
 CHECKED BY: CB

DATE: DECEMBER 16, 2022
 SCALE: 1"=40'
 SHEET No. **20 of 28**
 PROJECT No. **5402**

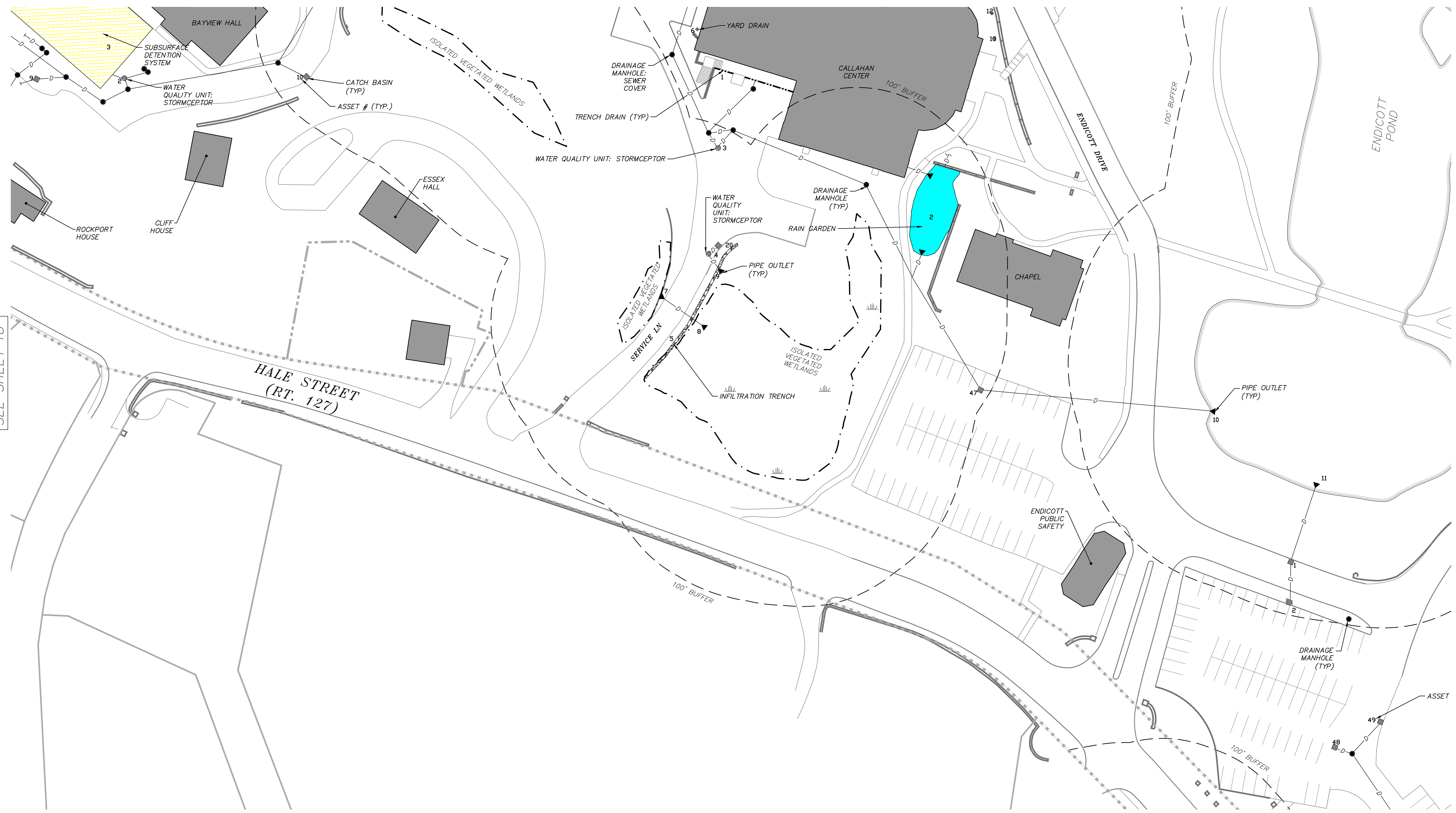
SEE SHEET 20

SEE SHEET 27



SEE SHEET 18

SEE SHEET 24



EXISTING LEGEND

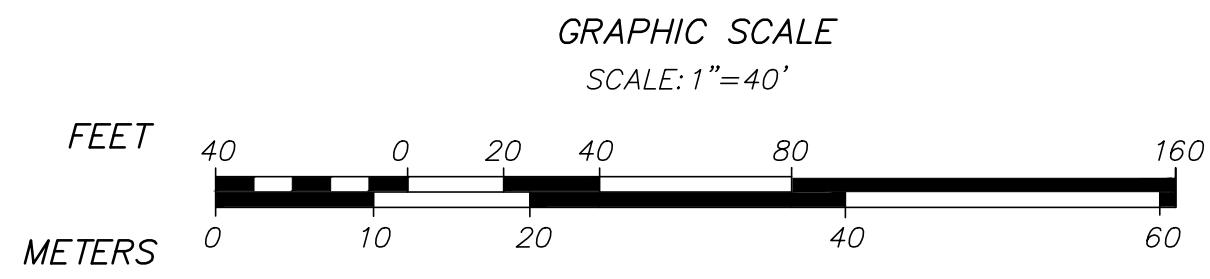
	ENDICOTT PROPERTY LINE
	STATE HIGHWAY LAYOUT
	ABUTTER
	EDGE OF PAVEMENT
	PAVEMENT MARKINGS
	EXISTING BUILDING
	ATHLETIC FIELD
	ENDICOTT PONDS
	STREAM BANK / WETLAND
	100' RESOURCE AREA BUFFER
	200' RIVERFRONT AREA
	BORDERING VEGETATED WETLANDS

EXISTING STORMWATER MANAGEMENT LEGEND

	DRAINAGE LINE
	CATCH BASIN
	YARD DRAIN
	DRAINAGE MANHOLE
	WATER QUALITY UNIT
	DRYWELL / LEACHING CATCH BASIN
	PIPE OUTLET
	TRENCH DRAIN
	POROUS PAVEMENT / POROUS PAVERS
	RIP-RAP / INFILTRATION BMP
	SUBSURFACE INFILTRATION SYSTEM BMP
	SUBSURFACE DETENTION SYSTEM BMP
	DETENTION BASIN BMP
	INFILTRATION BASIN BMP
	RAIN GARDEN BMP
	NOT FOUND
	TYPICAL
	TERMINUS UNKNOWN
	FLOW DIRECTION

NOTES:

- SEE SHEET 1 FOR GENERAL NOTES.
- SEE SHEET 4 FOR RESOURCE AREA NOTES.
- STORMWATER SYSTEM INSPECTION FOR PLAN COMPLETENESS WERE PERFORMED ON VARIOUS DATES IN 2021 AND 2022. VARIOUS DRAINAGE FEATURES NOT OBSERVED, ARE NOTED BY "NOT FOUND" OR "(NF)". THE EXISTING STORMWATER MANAGEMENT SYSTEM WAS COMPILED BASED ON A VARIETY OF SOURCES, AND FOR A COMPLETE AS POSSIBLE EXISTING STORMWATER MANAGEMENT SYSTEM PLAN, THEY REMAIN ON THE PLAN.



REVISIONS

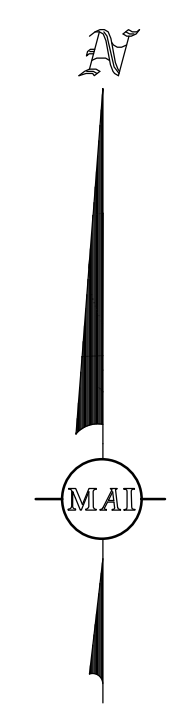
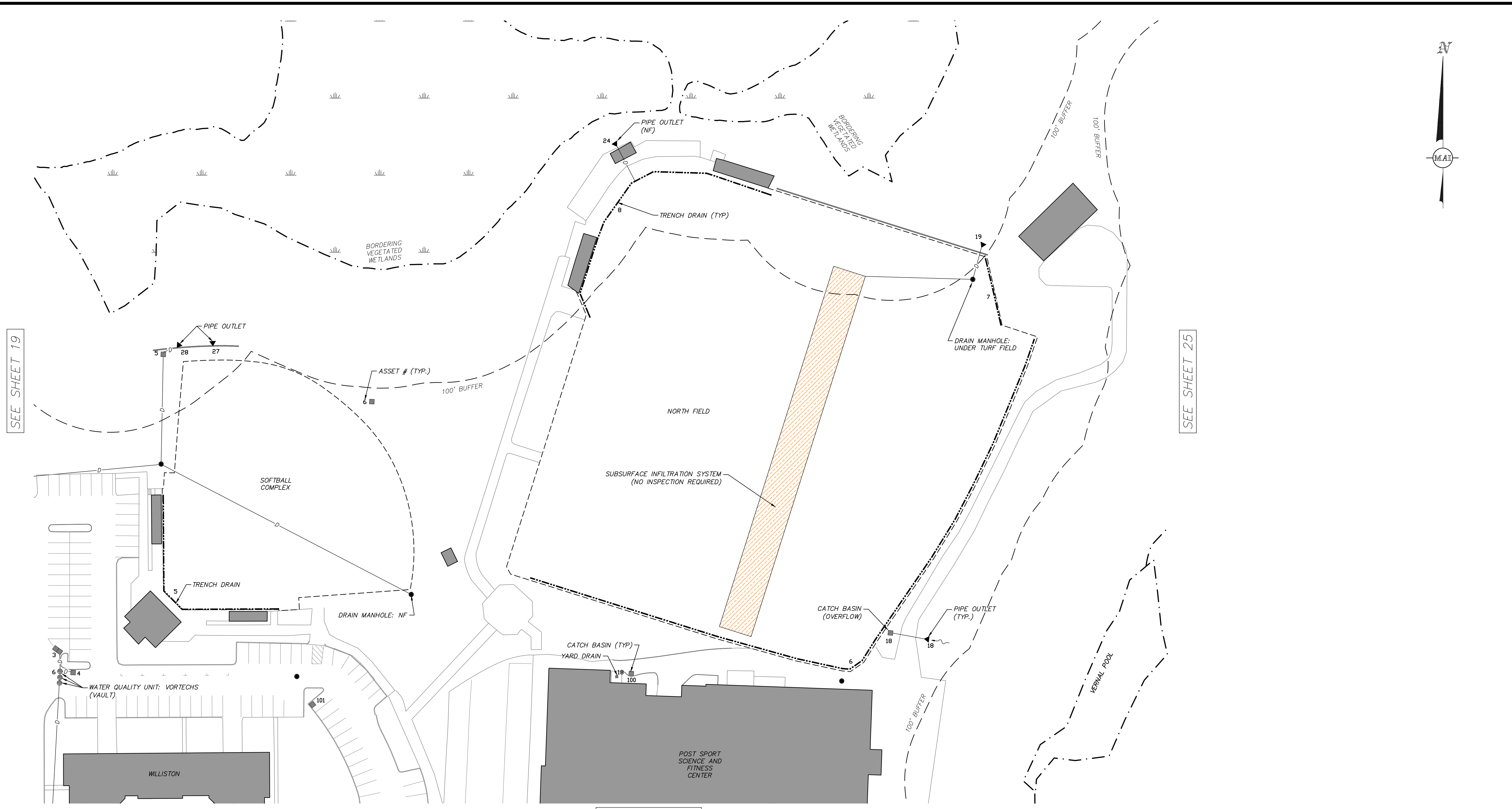
NO.	DATE	DESCRIPTION	BY

ENDICOTT COLLEGE
STORMWATER FACILITY PLAN
LOCATED IN
BEVERLY, MASSACHUSETTS
(ESSEX COUNTY)
PREPARED FOR
ENDICOTT COLLEGE

MERIDIAN ASSOCIATES
500 CUMMINGS CENTER, SUITE 5950
BEVERLY, MASSACHUSETTS 01915
TELEPHONE: (978) 299-0447
WWW.MERIDIANASSOC.COM

DESIGNED BY: TG
CHECKED BY: CB

DATE: DECEMBER 16, 2022
SCALE: 1"=40'
SHEET No. 21 of 28
PROJECT No. 5402



SEE SHEET 19

SEE SHEET 25

SEE SHEET 23

EXISTING LEGEND

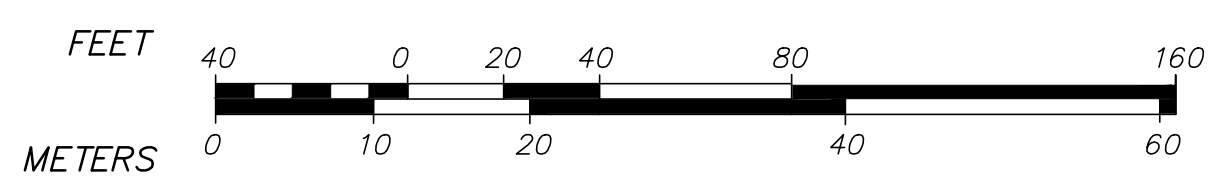
---	ENDICOTT PROPERTY LINE
---	STATE HIGHWAY LAYOUT
---	ABUTTER
---	EDGE OF PAVEMENT
---	PAVEMENT MARKINGS
---	EXISTING BUILDING
---	ATHLETIC FIELD
---	ENDICOTT PONDS
---	STREAM BANK/WETLAND
---	100' RESOURCE AREA BUFFER
---	200' RIVERFRONT AREA
---	BORDERING VEGETATED WETLANDS

EXISTING STORMWATER MANAGEMENT LEGEND

---	DRAINAGE LINE
■	CATCH BASIN
■	YARD DRAIN
●	DRAINAGE MANHOLE
●	WATER QUALITY UNIT
●	DRYWELL/LEACHING CATCH BASIN
●	PIPE OUTLET
---	TRENCH DRAIN
---	POROUS PAVEMENT / POROUS PAVERS
---	RIP-RAP/INFILTRATION BMP
---	SUBSURFACE INFILTRATION SYSTEM BMP
---	SUBSURFACE DETENTION SYSTEM BMP
---	DETENTION BASIN BMP
---	INFILTRATION BASIN BMP
---	RAIN GARDEN BMP
(NF)	NOT FOUND
(TYP)	TYPICAL
---	TERMINUS UNKNOWN
---	FLOW DIRECTION

NOTES:

- SEE SHEET 1 FOR GENERAL NOTES.
- SEE SHEET 4 FOR RESOURCE AREA NOTES.
- STORMWATER SYSTEM INSPECTION FOR PLAN COMPLETENESS WERE PERFORMED ON VARIOUS DATES IN 2021 AND 2022. VARIOUS DRAINAGE FEATURES NOT OBSERVED, ARE NOTED BY "NOT FOUND" OR "(NF)". THE EXISTING STORMWATER MANAGEMENT SYSTEM WAS COMPILED BASED ON A VARIETY OF SOURCES, AND FOR A COMPLETE AS POSSIBLE EXISTING STORMWATER MANAGEMENT SYSTEM PLAN, THEY REMAIN ON THE PLAN.



REVISIONS

NO.	DATE	DESCRIPTION	BY

ENDICOTT COLLEGE
 STORMWATER FACILITY PLAN
 LOCATED IN
 BEVERLY, MASSACHUSETTS
 (ESSEX COUNTY)
 PREPARED FOR
 ENDICOTT COLLEGE

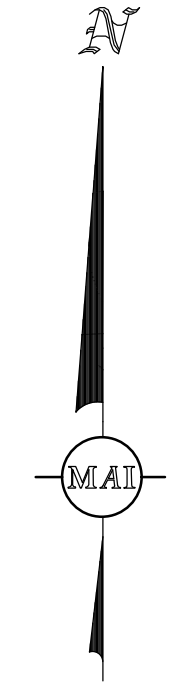
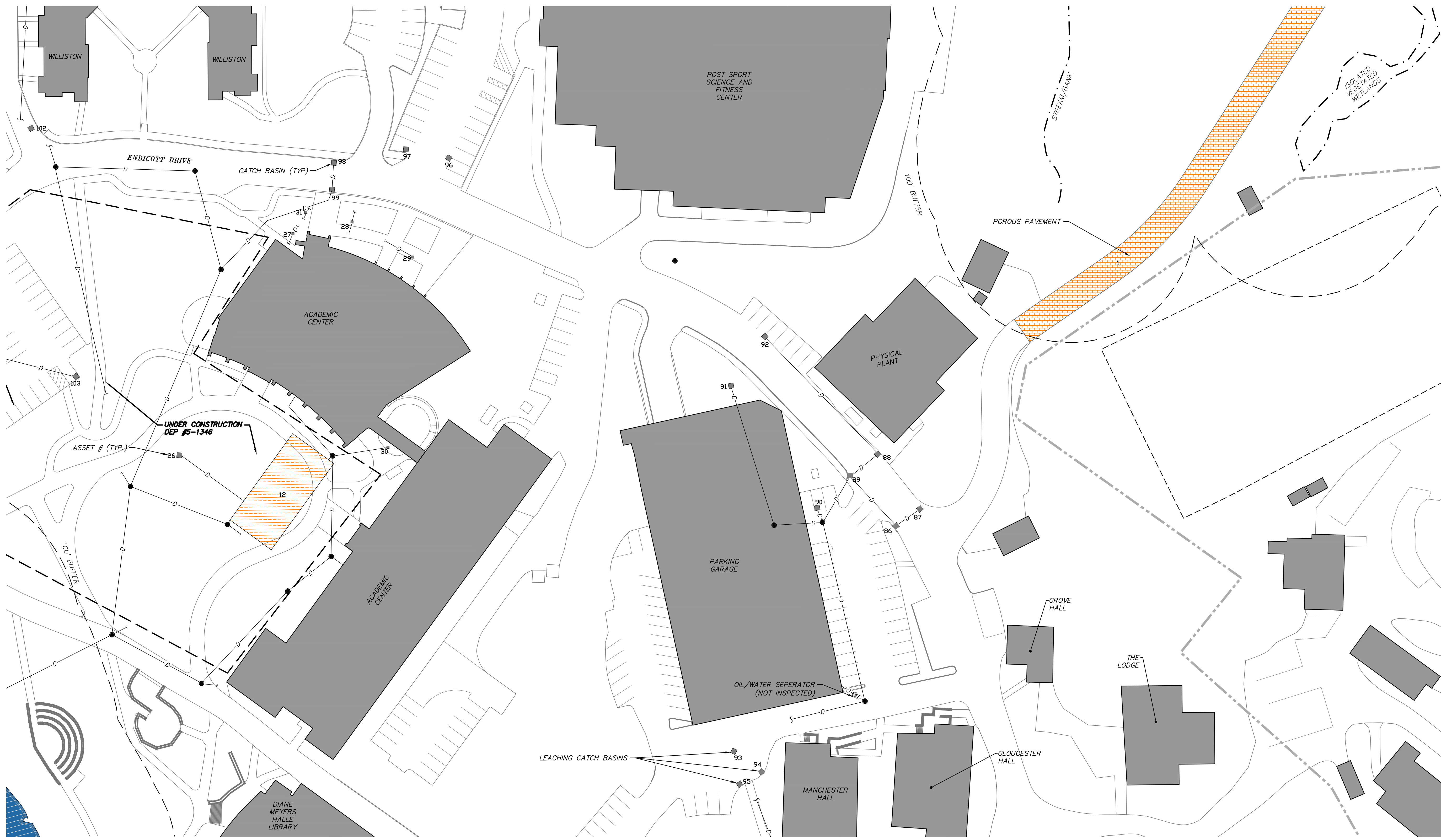
MERIDIAN ASSOCIATES
 500 CUMMINGS CENTER, SUITE 5950
 BEVERLY, MASSACHUSETTS 01915
 TELEPHONE: (978) 299-9447
 WWW.MERIDIANASSOC.COM

DESIGNED BY: TG
 CHECKED BY: CB

DATE: DECEMBER 16, 2022
 SCALE: 1"=40'
 SHEET No. 22 OF 28
 PROJECT No. 5402

SEE SHEET 22

SEE SHEET 20



SEE SHEET 24

EXISTING LEGEND

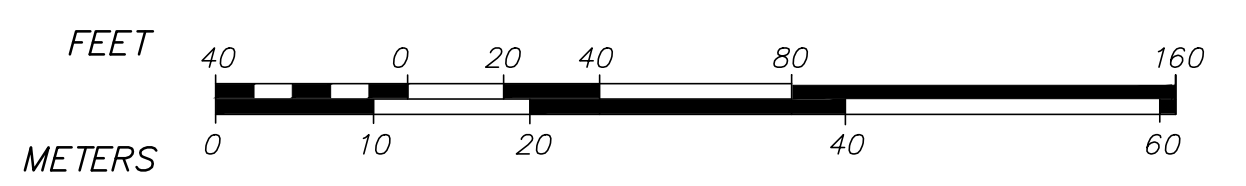
- ENDICOTT PROPERTY LINE
- STATE HIGHWAY LAYOUT
- - - ABUTTER
- EDGE OF PAVEMENT
- PAVEMENT MARKINGS
- ▭ EXISTING BUILDING
- ▭ ATHLETIC FIELD
- ▭ ENDICOTT PONDS
- STREAM BANK/WETLAND
- 100' RESOURCE AREA BUFFER
- 200' RIVERFRONT AREA
- ▭ BORDERING VEGETATED WETLANDS

EXISTING STORMWATER MANAGEMENT LEGEND

- D - DRAINAGE LINE
- CATCH BASIN
- YARD DRAIN
- DRAINAGE MANHOLE
- WATER QUALITY UNIT
- DRYWELL/LEACHING CATCH BASIN
- PIPE OUTLET
- TRENCH DRAIN
- ▭ POROUS PAVEMENT / POROUS PAVERS
- ▭ RIP-RAP INFILTRATION BMP
- ▭ SUBSURFACE INFILTRATION SYSTEM BMP
- ▭ SUBSURFACE DETENTION SYSTEM BMP
- ▭ DETENTION BASIN BMP
- ▭ INFILTRATION BASIN BMP
- ▭ RAIN GARDEN BMP
- (NF) NOT FOUND
- (TYP) TYPICAL
- TERMINUS UNKNOWN
- FLOW DIRECTION

NOTES:

1. SEE SHEET 1 FOR GENERAL NOTES.
2. SEE SHEET 4 FOR RESOURCE AREA NOTES.
3. STORMWATER SYSTEM INSPECTION FOR PLAN COMPLETENESS WERE PERFORMED ON VARIOUS DATES IN 2021 AND 2022. VARIOUS DRAINAGE FEATURES NOT OBSERVED, ARE NOTED BY 'NOT FOUND' OR (NF). THE EXISTING STORMWATER MANAGEMENT SYSTEM WAS COMPILED BASED ON A VARIETY OF SOURCES, AND FOR A COMPLETE AS POSSIBLE EXISTING STORMWATER MANAGEMENT SYSTEM PLAN, THEY REMAIN ON THE PLAN.



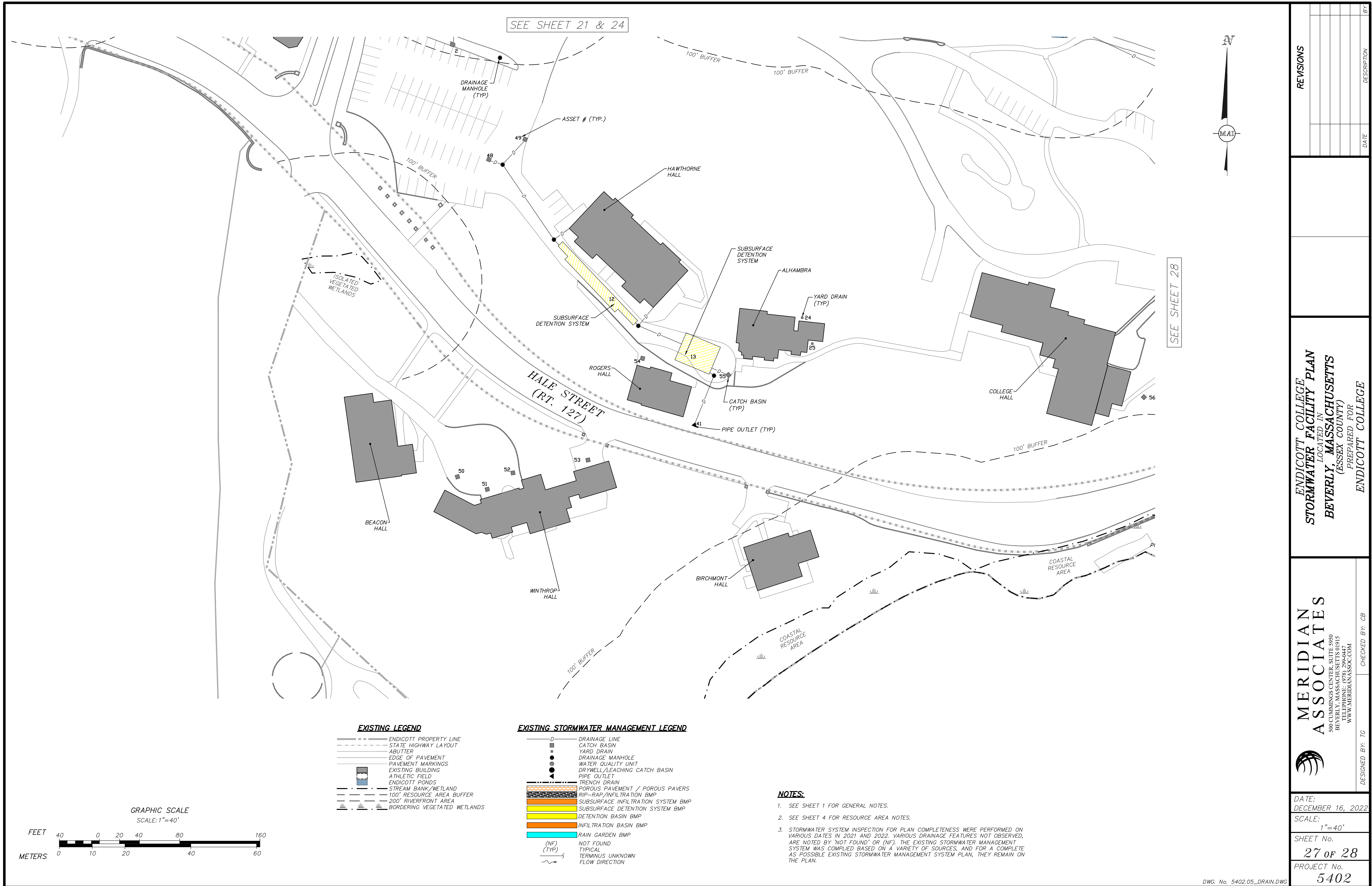
REVISIONS	DATE	DESCRIPTION	BY

ENDICOTT COLLEGE
 STORMWATER FACILITY PLAN
 LOCATED IN
 BEVERLY, MASSACHUSETTS
 (ESSEX COUNTY)
 PREPARED FOR
 ENDICOTT COLLEGE

MERIDIAN ASSOCIATES
 500 CUMMINGS CENTER, SUITE 5950
 BEVERLY, MASSACHUSETTS 01915
 TELEPHONE: (978) 299-9447
 WWW.MERIDIANASSOC.COM

DESIGNED BY: TG
 CHECKED BY: CB

DATE: DECEMBER 16, 2022
 SCALE: 1"=40'
 SHEET No. 23 of 28
 PROJECT No. 5402



SEE SHEET 21 & 24

SEE SHEET 28

EXISTING LEGEND

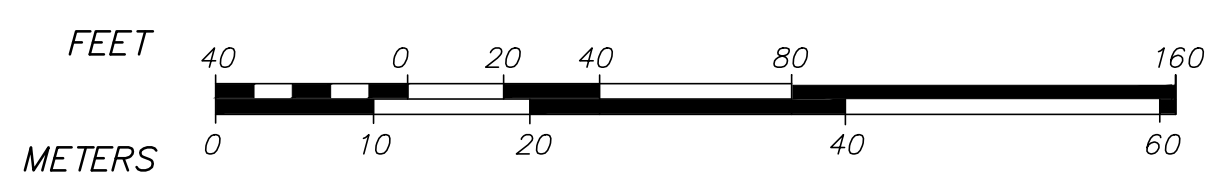
---	ENDICOTT PROPERTY LINE
---	STATE HIGHWAY LAYOUT
---	ABUTTER
---	EDGE OF PAVEMENT
---	PAVEMENT MARKINGS
█	EXISTING BUILDING
█	ATHLETIC FIELD
█	ENDICOTT PONDS
---	STREAM BANK/WETLAND
---	100' RESOURCE AREA BUFFER
---	200' RIVERFRONT AREA
---	BORDERING VEGETATED WETLANDS

EXISTING STORMWATER MANAGEMENT LEGEND

D	DRAINAGE LINE
█	CATCH BASIN
█	YARD DRAIN
●	DRAINAGE MANHOLE
●	WATER QUALITY UNIT
●	DRYWELL/LEACHING CATCH BASIN
○	PIPE OUTLET
---	TRENCH DRAIN
---	POROUS PAVEMENT / POROUS PAVERS
---	RIP-RAP/INFILTRATION BMP
---	SUBSURFACE INFILTRATION SYSTEM BMP
---	SUBSURFACE DETENTION SYSTEM BMP
---	DETENTION BASIN BMP
---	INFILTRATION BASIN BMP
---	RAIN GARDEN BMP
(NF)	NOT FOUND
(TYP)	TYPICAL
---	TERMINUS UNKNOWN
---	FLOW DIRECTION

NOTES:

- SEE SHEET 1 FOR GENERAL NOTES.
- SEE SHEET 4 FOR RESOURCE AREA NOTES.
- STORMWATER SYSTEM INSPECTION FOR PLAN COMPLETENESS WERE PERFORMED ON VARIOUS DATES IN 2021 AND 2022. VARIOUS DRAINAGE FEATURES NOT OBSERVED, ARE NOTED BY "NOT FOUND" OR "(NF)". THE EXISTING STORMWATER MANAGEMENT SYSTEM WAS COMPILED BASED ON A VARIETY OF SOURCES, AND FOR A COMPLETE AS POSSIBLE EXISTING STORMWATER MANAGEMENT SYSTEM PLAN, THEY REMAIN ON THE PLAN.



REVISIONS

NO.	DATE	DESCRIPTION	BY

ENDICOTT COLLEGE
STORMWATER FACILITY PLAN
LOCATED IN
BEVERLY, MASSACHUSETTS
(ESSEX COUNTY)
PREPARED FOR
ENDICOTT COLLEGE

MERIDIAN ASSOCIATES
500 CUMMINGS CENTER SUITE 5950
BEVERLY, MASSACHUSETTS 01915
TELEPHONE: (978) 299-0447
WWW.MERIDIANSOC.COM

DESIGNED BY: TG
CHECKED BY: CB

DATE: DECEMBER 16, 2022
SCALE: 1"=40'
SHEET No. 27 of 28
PROJECT No. 5402