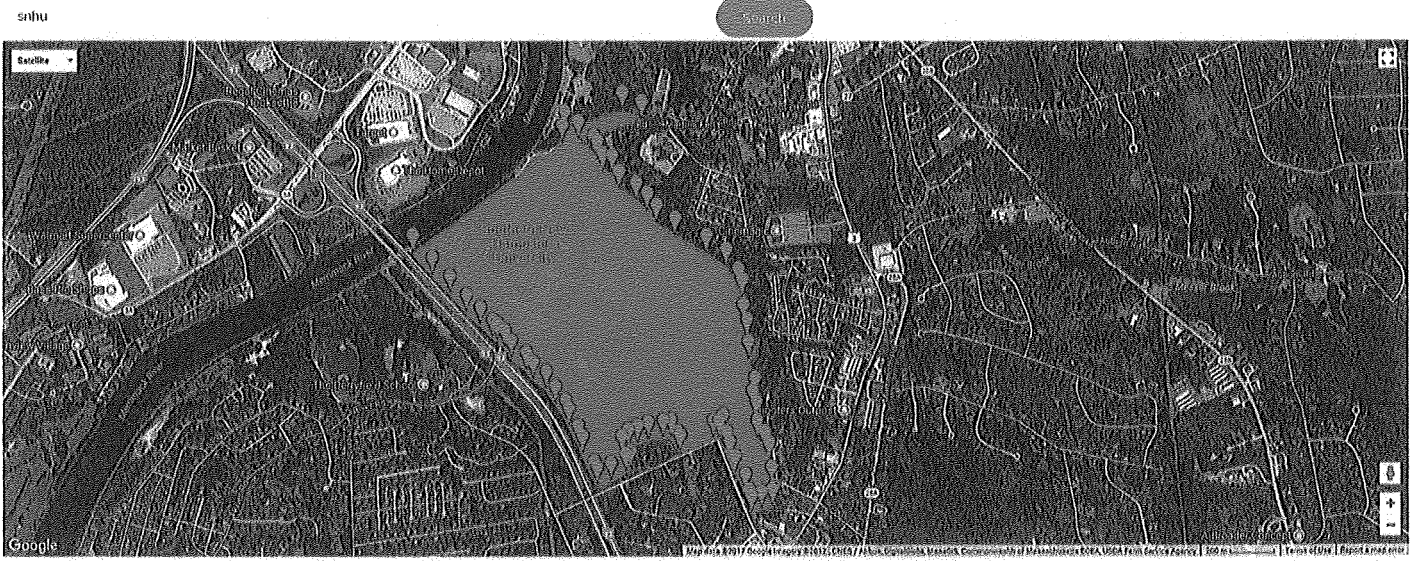


that the fertilized area is approximately 14 acres w the athletic fields. We are a 75 organic to 25 synthetic blend.

Total campus acreage	329	
zone 1	75.5	
zone 2	80.5	
zone 3	21	
zone 4	6.6	
zone 5	8.4	
zone 6	5.4	
zone 7	6.2	
Total maintainable acreage	125.4	Today

In 2012, we had 112.7 serviceable acres of 313.5 total acres.
 In late 2012, we purchased CB Sullivan which added 5.0 serviceable acres and 15.5 total acres which brought the total acreage to 329 acres. New serviceable acreage was 117.7 acres.
 In 2013, we added Tuckerman Hall to bring the total serviceable acres to 120.8 acres.
 In 2014, we added Library Learning Commons (LLC) to bring the total to 123.5 acres.
 In 2016, we added Gustafson to bring the total to 125.4 acres.

Manor



2017 **MINNICOIT** SUV 4x4
\$364 PER \$2000 DUEL AT DURING
MO. TO MO. LEASE
Click Lease Terms



CLICK HERE
RECALL OFFER

329 ACRES

Zone 1



2017 **FORD F150** SRS 4x4
\$364 PER \$2699 DUE AT SIGNING
+ NO. 30 MONTH LEASE
CLICK HERE
IF AVAILABLE

75.50 Acre

85 acres
is synthetic

zone 3

Map Height: Small - Medium - Large - Full Screen

Login | Create Free Account

snhu

Search



2017 **MINI COOPER** SHS 4x4
\$364 PER MONTH
\$2,999 DOW AT SIGNING
36 MONTH LEASE
MINI LEASE FINANCE
CLICK HERE

21.0 acre

zone 4



2017 **MINNER** SRS 4x4
\$364 PER 12,000 US AT SIGNING
12,000 LEASE
More Lease Terms



[CLICK HERE FOR ALL OFFERS](#)

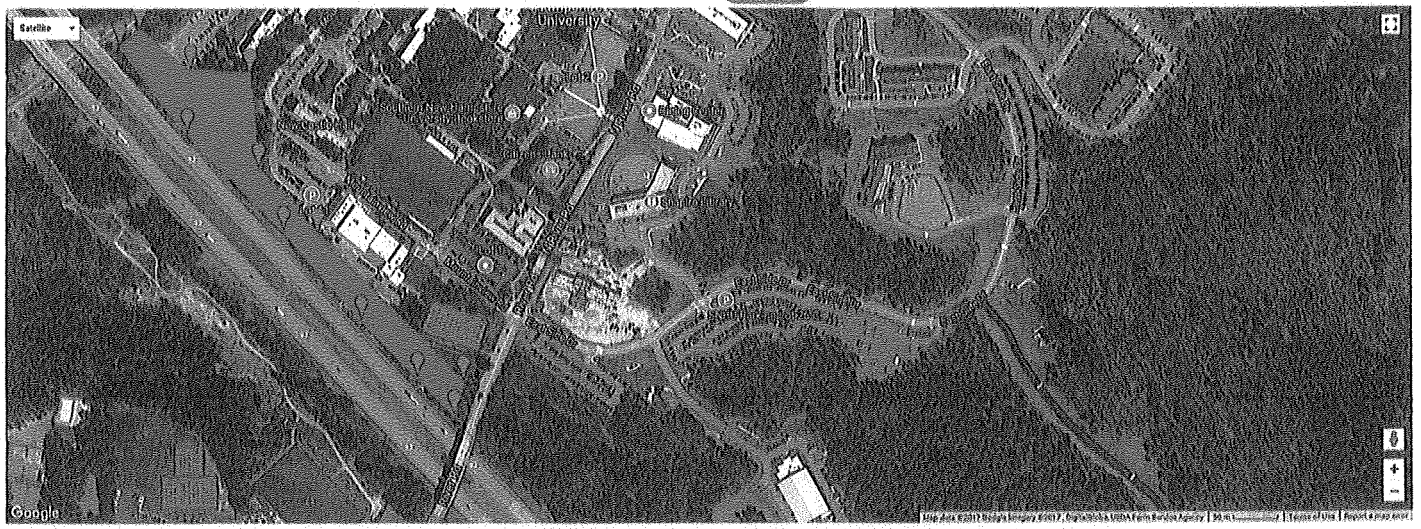
Output : Current Area

2678255 m² | 0.03 km² | 6.62 acres | 2.68 hectares | 288284.94 feet² | 0.01 square miles | 0.01 square nautical miles


Current Perimeter

6.62 acre

Zone 6



2017 **RAM PROUDLY PRESENTS** SR5 4x4
\$364 PER MONTH PLUS TAX AND FEES
NO. 30 MOS. LEASE
20K MILE LIMIT PER YEAR



CLICK HERE FOR ALL DETAILS

5.4 AC

Zone 7

Browser address bar: <https://www.dafilogic.com/projects-google-maps-area-cal> Google Maps Area Calculat. x

Navigation: file Edit View Favorites Tools Help

Search bar: Search

Map: Satellite view of a campus area with labels for 'Southern New Hampshire University' and 'Maine State'. Includes a search bar and navigation controls.

Advertisement: '05 Chevrolet Corvette \$15,500 CarGurus Good Deal. '06 Corvette Shop now! CarGurus

System tray: 8:26 AM 6/27/2017

4.2 acre

Madden, William

From: Greeb, Scott
Sent: Thursday, July 05, 2018 11:20 AM
To: Madden, William
Subject: New developed Acreage

Penmen + Tennis Courts + Parking Lot = 16.5 acres
Monadnock = 3 acres
CETA = 3 acres

Scott Greeb, PE | Senior Director | Facilities Management
Southern New Hampshire University | 2500 North River Road | Manchester, NH 03106
ph: (603) 645-9675 | cell: (603) 216-7809

Please consider the environment before printing this e-mail.