

## UW-Whitewater Sustainability Office 2016-17 End of Year Report



### ***Successes in Sustainability Engagement***

Wesley Enterline – Ashley Flor

[sustainability@uww.edu](mailto:sustainability@uww.edu)

**Contents**

Executive Summary..... 2

Campus Outreach and Engagement ..... 3

Community Outreach and Engagement ..... 10

Volunteer Engagement ..... 13

Student Employment ..... 15



## Executive Summary

The UW-Whitewater Sustainability Office was able to accomplish significant success in building a diversity of campus and community engagement programs designed to get a wide array of individuals, organizations, and departments involved in some aspect of sustainability.

Campus engagement efforts largely focused on building the overall awareness of the Sustainability Office by planning a number of different events and participating in events planned by other departments or organizations on campus. Thanks to leadership and planning provided by student staff in our office, we unveiled some of our most successful and diverse programming around recurring events like RecycleMania and Earth Week. Our presence at events that include tabling was nearly ubiquitous as our student staff provided enough time and availability to give us better coverage and exposure than ever before. Meanwhile, we began developing methods of measuring impact of participating in these events to better quantify our impact. We also maintained partnerships with a number of campus departments, connected with academics through student projects and faculty collaborations, assisted or advised student organizations and other student employment positions, participated in shared governance and various campus committees, and continued to provide leadership to UW System sustainability efforts.

Community engagement efforts largely focused on maintaining partnerships largely associated with the creation of a local food network or movement in the City of Whitewater, often with our focus of support on the Whitewater Community Food Pantry and public garden efforts like school gardens. We continued to be active participants in the planning of the Whitewater City Market and provide consistent leadership for the Whitewater Food Pantry Donation program. We continued our participation in W3: Working for Whitewater's Wellness through events and committee work and now have representation on the Board of Directors. We also provide assistance with aspects of formation for the Whitewater Grocery Company, a new initiative intended to bring a community-owned grocery store to Whitewater. Partnership with the City of Whitewater Urban Forestry Committee has yielded opportunities for student volunteers and an intern to focus on restoration work. Meanwhile, our representation on the Sustainable Janesville Committee allows us to maintain regional engagement in sustainability issues.

Volunteer engagement projects were the backbone of our appeal to direct action and involvement in sustainability issues that affect our campus and community. These programs are intended to educate participants in the particular issues these projects strive to improve, but also foster a sense of place and appreciation of the local environment. Continuing projects include prairie seed collection, stream monitoring, and core to our engagement program, the Campus Garden continues to be a focal point not only for educating on basic gardening principles, but also for attracting a wide range of partnerships focused on addressing local food issues.

Our significant progress would not have been possible if it weren't for our blossoming student employment program. Since its inception with one student in Spring 2015, it has grown into a robust program that supports seven paid student employees and one unpaid intern working on various aspects of our engagement program. While our program still lacks allocated funding in the budget each year to keep it sustainable, the immediate influence and impact these students had is apparent and provides justification for a permanent budget allocation to maintain this program. We plan to continue building better support for routine tasks and procedures to manage growth and sustain the program and improve efficiency.



## Campus Outreach and Engagement

This section includes an inventory of events coordinated or participated in by the Sustainability Office. We also focus on our connection to academics and co-curricular activities through our engagement with faculty, student organizations, students conducting research for class projects, and freshman orientation activities. We also highlight some of the diverse partnerships we've cultivated across campus with various departments and support provided to a variety of campus committees through leadership in shared governance. Finally, we have maintained a leadership presence in the UW System through a number of collaborative activities intended to share best practices and find new opportunities that leverage our shared resources.



### Events Coordinated by the Sustainability Office

Tours are an important part of connecting our audience to the local environment and effectively utilize the campus as a "living learning laboratory" by directly displaying or demonstrating some of the sustainability operations and engagement programs we have at UW-Whitewater. Many tours are given as a substitution to guest lectures and are outlined under Faculty Engagement

- Conducted a Nature Preserve tour for the Science Academy.
- Provided campus sustainability tour for international students in the Intensive English Institute.
- Provided garden and greenhouse tour to University Housing Eco-Reps.

Our event schedule this year included several new initiatives along with smaller support events designed to maintain our visibility with minimal staff input.



- **Collaborated with Athletics to participate in Game Day Recycling event during Family Fest football game by collecting recycling from tailgates and stadium stands while educating fans about proper recycling at games. Record attendance was achieved at this game.**
- **Hosted over 150 people for Campus Garden End of Summer Open House.**
- Tabling in the UC to provide information to visitors about energy consumption and energy reduction ideas, proper recycling, and water conservation and pollution through interactive displays.
- Coordinated The Generation Waking Up Experience - called a "WakeUp" for short. This is an interactive, multimedia workshop about the challenges & opportunities of our time, and inspires participants to take meaningful action toward a thriving, just, sustainable world.
- Exhibited a film showing for the documentary "Planetary."
- Tabled with CMU for "Mugshots" to promote the discount on refilling reusable coffee mugs at campus coffee retailers.





- Held “Witches of Whitewater Haunted Trash Pickup” around Halloween that focused on Starin Park neighborhood to help boost community relations with this group.
- Worked with Fort HealthCare to plan School Garden Summit to connect K-12 educators to each other and garden-related resources.

RecycleMania has been a focal point for spring programming since 2009 and is a useful national competition for us to focus on one of the foundational activities to sustainability action: recycling and waste reduction.



- Tabled in the UC to have interested students sign a banner pledging to recycle items during the RecycleMania competition period and beyond.
- Conducted a trial waste audit at Upham Hall and found a 25% contamination rate. Created an educational video of the process.
- Conducted a trial waste study at Hyland Hall to determine areas of opportunity for improving recycling program.
- Coordinated a campus-wide plastic bag collection program and collected approximately 8,238 bags.
- Conducted a Game Day Recycling event during a home basketball game and achieved 48% recycling diversion during this event.
- Exhibited film showing of “A Plastic Ocean”.





Earth Day was established in 1970 and continues to be one of the most recognizable dates associated with environmental concern and action. We continued our efforts to plan and execute events throughout the week near April 22 as part of Earth Week.

- **Collaborated with Science Outreach Office to provide Upham Greenhouse tours and interactive activities for LINCS Elementary School students. Also arranged for students from Creative Marketing Unlimited to provide stormwater demonstrations using the Enviroscope model and sponsored the Birds of Prey interactive raptor presentation.**
- Offered several Campus Sustainability Tours and Campus Garden Preview and Greenhouse Tours throughout the week.
- Hosted a showing of the documentary film “Just Eat It” and conducted a panel with representation from local producers, the Whitewater Food Pantry, and campus sustainability, to discuss food waste.
- Assisted WSG in planning and promoting Eco Fair event, with the expectation that our office might re-acquire the responsibility for this event in the future.
- Assisted Anthony Gulig in planning and promoting a performance by James Gordon, a singer-songwriter that focuses on environmental topics in his lyrics.
- Assisted Creative Marketing Unlimited in planning and promoting Green Tank Event, a pitch competition modeled after the television show Shark Tank that features sustainability-themed projects or products.
- **Worked with University Honors program to engage 45 visiting high school seniors in planting 40 trees to establish an apple orchard on campus near Wells Hall.**
- **Collaborated with Creative Marketing Unlimited to conduct a clean-up event in a section of Whitewater Creek while engaging neighboring homes about our effort.**



## Events Participated In by the Sustainability Office

Participation in events planned by other entities on campus allows us to achieve our goals of increasing visibility without dedicating the staff or other resources toward executing the event itself. There are a large number of opportunities that come up throughout the year to participate in these events and with our larger student staff, we were able to participate in more of these than in any previous year.

- Tabled for UC Summer on the Mall with a Try-It table featuring various recipes using produce from the Campus Garden.
- Tabled for Plan it Purple Resource Fairs and Hawkfest.
- Tabled for the Office of the Provost Involvement Opportunity Fair.
- Tabled for CROP Hunger Walk to highlight the collaboration with the Campus Garden and the Whitewater Community Food Pantry partnership.
- Tabled for the UW-Whitewater Wellness Fair to provide information on the Campus Garden and the health and environmental benefits of eating organic produce.
- Participated in Guest Chef event in Drumlin and Esker Dining Hall - promoted the Campus Garden Open House event.
- Provided volunteer opportunities in the Nature Preserve and Campus Garden as part of Learning Community Service Day.
- **Coordinated with University Honors to provide an opportunity to interested students to take a field trip to the International Crane Foundation and Aldo Leopold Nature Center near Baraboo, WI, which included an opportunity for students to sit in the Leopold family shack.**
- Participated in the LEAP Lunch “Taking a Bigger LEAP—next steps for UW-Whitewater’s LEAP initiative”
- Participated in LEAP 2017 workshops as the “Green Team” to focus on improving integration of sustainability initiatives and concepts in academics through improved communication and programming.
- Assisted with planning, promotional efforts, and primary sponsorship for “All for the Water” event designed to raise awareness of environmental justice issues that affect native peoples in Wisconsin.
- Participated in UC Warhawks at Night event to promote Zimride.
- Participated in University Housing RA Resource Fair and Scavenger Hunt to promote volunteer opportunities and sustainability topics.
- Participated in Career and Leadership Development’s Fall and Spring Involvement Fairs to promote volunteer opportunities to interested students and raise awareness of the Sustainability Office.



## Faculty Engagement

The Sustainability Office partnerships with academic departments, faculty, and academic staff is an important aspect of infusing a culture of sustainability through offering co-curricular educational and involvement opportunities that complement curriculum. Our connection to Facilities Planning & Management allows students to access information and data about campus operations that helps foster a role for the campus physical space as a learning living laboratory for student projects and research.

- Susan Elrod: Collaborated with Provost and previous Sustainability Fellow Josh Mabie to establish a plan to revive the Sustainability Fellow position and Sustainability Council committee. Jonah Ralston was hired as the new Sustainability Fellow in May 2017.
- Andrea Ednie and Brandi Neimeier: Met with faculty from HPERC Department to discuss community partner projects for Fall. Sustainability literacy and attitudes survey conducted by graduate students as a semester project for Andrea Ednie.
- Meg Waraczynski: Statistical data analysis project for energy data records (6/15)
- Marilyn Annucci: Provided Campus Garden tour and Nature Preserve tour with seed collection training for Nature Writing class.
- Yushan Zhao: Guest lecture on campus sustainability for Innovation and Marketing classes both semesters, including providing detailed data to students for semester projects.
- Jo Ann Oravec: Guest lecture on sustainability data displays, or “dashboards,” and how technology can be utilized to convey sustainability information to ITSCM 338 class.
- Carol Brunt: Guest lecture on campus sustainability for Sustainable Management class.
- Bob Evangelisti: Guest lecture and campus tour focused on campus sustainability topics for Environmental Management class.
- Holly Denning: Collaborated on planning “All for the Water” event and discussed future grant proposals and opportunities for collaboration around the Campus Garden project goals.
- Barbara Beaver: Met to discuss possible collaborations with the LEARN Center during the 2017-18 academic year that will involve the Sustainability Fellow more directly with faculty outreach.
- Steve Levas: Met to discuss LEAP team participation and project, design assignment for Environmental Science students to focus on AASHE STARS credits, and provided a guest lecture on campus sustainability.
- Elizabeth Kim: Guest lecture focused on sustainability engagement opportunities to an Honors English class and World of Ideas classes.
- Ann Garvin: Guest lecture about Campus Garden to Nutrition class.

## Student Engagement

Supporting co-curricular activities and organizations helps foster opportunities for students to engage in High Impact Practices and have tangible impacts on the culture of campus sustainability. Student organizations are an important opportunity for students to learn leadership and collaboration skills and sustainability-related student organizations have been a focus of our support since the inception of the program. Additionally, student research projects and informational interviews are consistent and impactful ways for students to learn about sustainability with greater depth.





- Served as advisor for **Students Allied for a Green Earth** as they reached the largest number of members and routinely maintained high levels of active engagement throughout the academic year.



- Served as advisor for Gardening Club, a new student organization focused on educating about horticulture topics.
- Signed new contract with Creative Marketing Unlimited for the 2016-17 academic year to revive the UWW Earth Initiative and assigned Ashley Flor to manage the account on behalf of the Sustainability Office.
- Gave informational interview and discussion of sustainability-related career tracks with multiple students.
- Met with students from the student organization Enactus about collaboration on smart phone repurposing program to send usable phones to developing countries to assist with eye examinations.
- Met with graduate student to conduct a research project on a “Garden Blitz” community gardens promotional program and to work with the Whitewater Food Pantry on bilingual nutritional information.
- Coordinated with WSG Sustainability Director to provide support for planning the Eco-Fair and to develop a new model for the Bike Share program.
- Participated in Alumni Mentorship program and connected with Environmental Science nontraditional student to provide career advice and general guidance.
- Met with students about research projects focused on dual-flush toilet technology implemented on campus, recycling, LED lighting, solar panels, and other campus operations sustainability topics.
- Met with student from Intensive English Institute to provide basic information on beekeeping efforts on campus and share resources for his presentation.
- Collaborated with student intern for Enterprise CarShare to assist with marketing efforts for the program on campus.
- Provided video interview to discuss recycling topics with students from UWWTV.

### Other Department Partnerships

Sustainability can reach a wide range of different departments, offices, and other organizations on campus. The Sustainability Office focuses on tapping into the interest these partners have in sustainability topics and provides support to advance sustainability initiatives and projects throughout many aspects of the university. Below are some of the key partnership accomplishments over the last year.

- Participated in training presentation to Eco-Reps with University Housing staff and collaborated to develop a shared intern model to help guide their Student Sustainability Coordinator position.
- Established a partnership with iCIT to efficiently dispose of incoming e-waste collected by the Sustainability Office in a collection bin in the UC.
- **Asked by Nic Tippery in Biology Department to formally co-manage Upham Greenhouse.**

- Discussed future collaboration with UW-W Dining Services and the Campus Garden with new dining contractor, A'viands.
- Coordinated with Science Outreach Office to create training videos for Enviroscape storm water model with students from Creative Marketing Unlimited.
- Discussed possible formation of a Campus Food Pantry with a few other departments on campus. Planning discussions will re-convene during the 2017-18 academic year.
- Began development of a self-guided sustainability tour document for use in Continuing Education and assigned the design work to Kira Weir, a student graphic designer employed by the Sustainability Office.
- Re-designed monthly Sustainability Office newsletter using Lyris software with iCIT and cultivated a current subscriber base of over 750 individual emails.



## University Committees

Shared governance is not only a strategic priority for UW-Whitewater, but is also an aspect of social justice when viewed through a lens of sustainability. To represent this important overlap and to provide leadership to the newest governance group on campus, we've maintained representation in University Staff Council since 2014. This opportunity has also permitted the Sustainability Office to have representation on several university committees that have strategic importance or direct sustainability relevance.

- University Staff Council
  - Elected to another two-year term (2016-2018).
  - Elected Vice Chair and served as Acting Chair from April-June 2017, which included meetings with campus leaderships and participation in UW System Governance monthly meetings.
  - Participated in Programming/Outreach and UPS Policy subcommittees.
  - Led campus orientation tours for new University Staff.
  - Active recruitment of University Staff to serve on key leadership search and screen committees (Vice Chancellor for Administrative Affairs and Athletic Director).
- Strategic Planning and Budget Committee
  - Participated as University Staff shared governance representative in strategic planning formulation.
- Outreach Council
  - Participated as University Staff shared governance representative for committee charge and progress toward the community outreach Carnegie classification program.
- Chancellor's Inclusive Excellence Committee
  - Participated as University Staff shared governance representative in sharing best practices and planning for future committee objectives.
- Campus Landscape and Planning Committee
  - Participated as University Staff shared governance representative in decision-making and information sharing regarding campus landscape decisions.



## UW System Engagement

Since the loss of the UW System Sustainability Coordinator position, several Sustainability Officers from around the UW System have continued to network and collaborate to maintain efforts that allow us to share best practices and leverage our combined power to impact larger changes in the UW System. Sharing of best practices, research, and accomplishments can facilitate sustainability initiatives to be implemented with less effort and greater degrees of success.

- **Visited UW-Milwaukee Office of Sustainability for tour of campus grounds efforts and collaboration meeting on the Green Office Certification Program for potential implementation at UW-Whitewater.**
- **Assisted with planning efforts for annual UW System Sustainability Meeting at UW-Platteville and facilitated attendance for three UW-Whitewater students.**



- Collaboration in focus group examining issues around system-wide energy consumption, including investigating Power Purchase Agreement models and meeting with Vice Chancellors that serve as Chief Business Officers from around UW System about strategies to reduce energy consumption and climate impact through the implementation of larger-scale renewable energy projects.
- Gave joint presentation (with UW-Stevens Point Sustainability Coordinator) at UW System Sustainability Meeting about connecting students to campus resources as part of fostering a “living learning laboratory” environment for hands-on learning.
- Gave presentation on the Campus Garden project at the Upper Midwest Association of Campus Sustainability at Beloit College and participated in the rest of the conference.
- Provided campus landscape tour to visiting members of the Facilities Department at UW-Stevens Point.



## Community Outreach and Engagement

This section highlights the various organizations or committees that the Sustainability Office has connected or partnered with over the course of the last academic year. Many of these are continuing partnerships where existing programming has and continues to bring benefits to the organization, awareness of our office, and opportunities for student engagement. Community engagement is a strategic priority for UW-Whitewater to fulfill the pursuit of the Wisconsin Idea, a concept illustrating the role the university plays as an intellectual resource for the communities it serves. The Sustainability Office enthusiastically supports pursuit of the Wisconsin Idea through a variety of collaborations to forge a more sustainable society.

### Community and Municipal Committees

The Sustainability Office has connected with several committees or organizations to support sustainability activities and leverage opportunities to reach new audiences. Many of these partnerships have provided these groups with support from our office that have yielded great community impact and awareness.

- Whitewater City Market
  - Continued responsibility of coordinating food pantry collection program with vendors yielded nearly 4,500 pounds of produce donated from vendors and patrons to the Whitewater City Market.
  - Tabling event with W3 to provide information on nutrition featuring the bike blender and volunteer opportunities.
  - Participated by tabling for City Market Anniversary event and staff assisted with raffle.
  - **Provided staffing support for the Market's Food Pantry donation program, which collects produce from market vendors and patrons at the end of each market week. Through our student and staff leadership, we were able to collect and transport over 4,100 pounds of produce to the Whitewater Community Food Pantry.**



- Rock River Stormwater Group
  - Continued participation in visioning for future storm water outreach with partner municipalities.
  - Elected President in January 2017
  - Led effort to engage Creative Marketing Unlimited as the new outreach consultant for significant savings to RRSg.
  - Coordinated logistical planning for Winter Road Maintenance workshop held on campus and used by Grounds Crew staff and other city municipal staff as continuing education.





- W3: Working for Whitewater's Wellness
  - Participated in W3 Committee Meeting to further collaboration with Campus Garden outreach and nutrition education efforts and assist in planning events for key events like W3Ifest.
  - Student staff participated in W3 Coach Meeting on behalf of the Sustainability Office.
  - Elected to Board of Directors in June 2017 and participated in strategic planning sessions to determine future composition of organization.
- Whitewater Grocery Company
  - Joined Communication/Outreach Committee and connected community members with a student intern to provide administrative support in developing a cooperative, or community-owned, grocery store.
- Sustainable Janesville Committee
  - Activities included research on best practices for sustainability-related municipal ordinances, advisement and public outreach on the Monterey Dam removal/repair proposal, creation and passage of a backyard chicken ordinance, creation of a natural landscaping and composting ordinance, planning, marketing, and execution of the Sustainable Living Fair. Re-elected Vice Chair of the committee in May 2017.
  - Participated in radio interview with WCLO to discuss water quality issues, Monterey Dam, local food issues, and the Sustainable Living Fair on behalf of the committee.
- City of Whitewater Urban Forestry Committee
  - Approached by committee chair Karen Coburn and local community member Ruth Walton to review restoration options for the Walton Oaks Park. Planned a few trial volunteer events and recruited students to participate in the effort. Supervised Elizabeth Hoffmann as an unpaid intern working on researching restoration methods for this property.



## Other Community Engagement

Various opportunities to promote sustainability topics are pursued with a variety of organizations, often through introductory efforts that require minimal resource investment. Providing tours of the local landscapes has been an important means of connecting with community members and can often yield additional partnerships and projects. On the other hand, partnerships like that with the Whitewater Community Food Pantry allow us to develop opportunities for student projects and internships.

- Continued close working relationship with Whitewater Community Food Pantry by connecting them to students interested in projects related to wellness and nutrition, supporting them with Campus Garden produce donations, and meeting with the Board of Directors to determine collaborative opportunities for the 2017 season.
- **The Continuing Education Landscape Tour Series was held again for the 2016 summer season. This series included five sessions: Early Summer Prairie and Nature Preserve, two Flora, Flowers, and Fountains on Campus, a Campus Garden and Upham Greenhouse, and a Late Summer Prairie and Nature Preserve. Gardeners from FP&M assisted with landscape tours.**



- Participated in the Natural Resources Foundation of Wisconsin field trip #154 - Bluff Creek State Natural Area by providing a 45-minute presentation on Bluff Creek, Water Action Volunteers and UW-Whitewater stream monitoring program, and demonstration of Level 1 monitoring protocols. Feedback to this presentation has already generated additional opportunities for outreach.
- Met with Cornerstone of Hope community garden program to identify possible opportunities for future collaboration to implement the "Garden Blitz" idea in Whitewater, which would provide raised bed gardens in exchange for people pledging a certain amount of produce is donated to a local food pantry.
- Continued site supervisor role for Wholesome Harvest CSA (Community Supported Agriculture) to maintain a source of fresh, locally grown organic produce for campus and community customers.
- Continued participation and networking with the Master Gardener Volunteer program with Walworth County UW-Extension. Participated in volunteer garden work days, compost and plant sales, and Home Garden Tour at Rotary Botanical Gardens in Janesville, WI as a Master Gardener.
- **Continued student staffing support for LINCS elementary school garden events.**
- Consulted with Human Resources staff at Husco in the Whitewater Business Park about steps to create a garden for their staff to manage on-site.
- Consulted with students with the French Club at Milton High School about steps to create a peace garden near their school.
- Provided interview with Whitewater Register about Campus Garden project.
- Consulted with members of the Citizen's Climate Lobby - Jefferson Chapter on effective methods of student outreach and participated in initial meetings for setting up a new chapter in Janesville.



## Volunteer Engagement

Our volunteer programs exist to provide students with tangible actions they can take to improve the local environment and have a positive impact on the community. These opportunities to get involved have also been the primary conduit for involvement in other areas of our sustainability program. Students, staff, and community members often sign up for our email list to get more information about volunteer opportunities, but the newsletter we send out in addition to our volunteer schedules include important marketing for events and projects for additional involvement. The cornerstone project is the Campus Garden, which was established in 2013, but many more students also participate in our regular Prairie Seed Collection efforts and our participation in the Water Action Volunteers statewide stream monitoring program. We are also expanding our restoration efforts through the Walton Oaks Park project and hope this opens up additional community service projects on campus and in our region. We recorded 558 hours of community service through our volunteer projects in 2016, but many more hours were logged through engagement with student organizations during “unofficial” volunteer times not advertised to our public list.

### Campus Garden

- Coordinated another iteration of the Service Learning class focused on the Campus Garden with Ben Prather and engaged 15 students in establishing all seedlings used in the 2017 Campus Garden. Students also learned about garden planning, impacts of urban and community gardens on neighborhoods, and planted several crops directly in the Campus Garden for the first time since we started this class.
- Grew over 1750 pounds of produce and donated the vast majority to the Whitewater Community Food Pantry.
- Held planting event that generated \$80 in revenue from plant sales for donation to the Whitewater Food Pantry and engaged 10 volunteers in 28.5 hours of community service.
- Conducted regular volunteer times multiple days per week from May through November in 2016 and started volunteer sessions again in May 2017.
- Transitioned daily management of campus garden space to dedicated student staff who successfully utilize independent problem-solving to handle routine garden questions.
- Engaged student at UW-Stout interested in learning more about our campus garden operations.
- Established compost program and diverted several hundred gallons of coffee grounds and banana peels from the University Center coffee shop and The SweetSpot coffee shop.





### UW-Whitewater Nature Preserve: Prairie Seed Collection and Reconstruction

We held 18 successful volunteer times multiple days per week from September through November 2016 to collect 48 pounds of plant material and seed from a selection of 33 species of prairie plants in the reconstructed prairie of the UW-Whitewater Nature Preserve. Roughly one acre of formerly agricultural land in the Nature preserve near Friar's Woods was planted with the collected seeds. For the first time, a section of prairie planted with oversight from the Sustainability Office was released from active management through mowing to allow the new prairie planting to reach maturity. The bulk of prairie seed collection volunteer opportunities were managed by student staff.



### Stream Monitoring

We conducted regular volunteer times to monitor Bluff Creek and Whitewater Creek from April through October 2016. We also participated in Water Science for Educators program hosted by the Rock River Stormwater Group and Rock River Coalition. We contributed additional data by collecting and shipping water samples from Whitewater Creek for phosphorus analysis to determine the impact of nonpoint runoff of fertilizer on this local stream. We also initiated and expansion of the program by acquiring a third site (Spring Brook Creek) and two phosphorus sampling sites (Spring Brook Creek and Bluff Creek) in 2017. Additional engagement in local restoration efforts and field trips are also being explored during the 2017 season.





### Walton Oaks Park

We planned and coordinated with the Whitewater Urban Forestry Committee two pilot volunteer sessions in Spring 2017 to begin woody invasive removal on the north end of the Walton Oaks property. We engaged 24 volunteers in cutting, poisoning, and removing primarily buckthorn and honeysuckle and plan on resuming these efforts in November 2017 to be conducted throughout the winter months. We also successfully mediated a boundary dispute with the neighbors of the park and found ways to positively engage them in the project with a long-term goal of forming a Friends group to provide ongoing maintenance of the property.



## Student Employment

The growth of our program and its continued success is contingent on the growth and refinement of our student employment program. This High-Impact Practice has allowed many of our current programs that require more frequent time and attention to be outsourced to student staff to manage the day to day activities, freeing up more time to expand the program and create better balance between organizational priorities. Below is a synopsis of the students employed in our program over the course of the last year. Some have graduated and moved on, but their impact on how we function continues to show in the successes we've enjoyed.

### Ashley Flor

Ashley was scheduled for full-time hours for Summer 2016 to focus on a wide assortment of office organization projects, volunteer outreach, and social media management. Her role in the Sustainability Office expanded significantly and she was given the title of Sustainability Office Supervisor to reflect the integral role she serves for the smooth operation of the Sustainability Office. She has overseen the planning and assisted with the implementation of several of our key outreach events and marketing efforts throughout the academic year, including providing oversight of our account with Creative Marketing Unlimited. We also hired a student graphic designer (Kira Weir) that reports directly to Ashley and another Sustainability Assistant focused on office administration (Hannah Roehr) that reports primarily to Ashley for office support and documentation tasks. She also supervises our social media accounts and has completed various class assignments as part of her Marketing major that focus on aspects of the Sustainability Office Engagement programming.



### Karl Brandstaetter

Karl managed the garden through the last half of the 2016 season after taking a bike trip from Whitewater to San Diego, CA to promote climate justice. Karl was able to successfully transition the daily management of the Campus Garden to student staff by working on the project independent of daily input from supervision. Karl was a tireless advocate for climate change and water rights issues and has gone on to pursue his interest in local waterways in northern Wisconsin.



### Lorenzo Backhaus

Lorenzo was hired for Fall 2016 as a Sustainability Assistant. He took over management of the Campus Garden project in March 2017 and has been managing the daily operations for almost all of the 2017 season, including oversight of our most successful spring of seedling propagation in Upham Greenhouse. Student staff also engaged in extensive cleaning and organizing of space in Upham Greenhouse to utilize storage more effectively. Lorenzo also started expanding plant propagation and plant sales that directly benefit any student organization interested in participating in the process. He has also served as Co-President of Students Allied for a Green Earth during one of their most successful years of membership and engagement.



### Erica Otto

Erica served as the Community Health Internship Program (CHIP) intern in the Campus Garden Education and Outreach Specialist, focusing on nutrition education related to local foods. Erica completed the eight week internship and worked additional hours as a Sustainability Assistant through April, May, and August to support logistics and volunteer engagement at the Campus Garden. She also served in a support role for educational efforts at the Whitewater Food Pantry and successfully administered our compost program. Erica managed the Campus Garden for most of the summer of 2016 while Karl was on his bike trip. Erica was brought back to serve as a Nutrition Education intern in 2017 and utilized work study funds to assist the Campus Garden efforts while establishing a new school garden in the Walworth County Community Garden to serve Lakeland School, a special education school in Elkhorn, WI. Erica successfully planned and engaged students in planting and maintaining the garden space. She also planned and executed a series of interactive activities for middle and high school students that have a wide range of cognitive abilities.



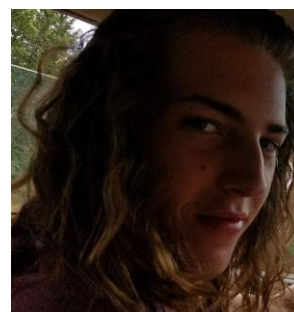
### Hannah Roehr

Hannah was hired in October 2016 to provide office support and assistance to replace Ashley Flor when she was promoted to take on more independent control of Sustainability Office Engagement programming. Hannah has provided support for a variety of data collection and entry tasks designed by Ashley to create better quantitative reporting of the Sustainability Office's impact. Hannah is also one of our primary representatives for a wide variety of tabling events we participate in and planned our Witches of Whitewater Haunted Trash Pickup event. Hannah has also served as our primary representative for the Whitewater Grocery Company Communication/Outreach Committee.



### Jon Roberts

Jon was hired in February 2017 to serve as the Campus Garden manager understudy and provide backup coverage for the schedule of events we plan or participate in. Jon will take over as the manager of the Campus Garden for the 2018 season once Lorenzo graduates. He is an active member of SAGE and has gotten involved in climate justice issues through the Wisconsin Youth Network and Sierra Club.



### Kira Weir

Kira was hired in March 2017 to provide graphic design support for the variety of needs generated by the Sustainability Office Engagement programming. Kira continues to develop marketing materials and other design work assigned by Ashley. Kira is also developing a design guide to maintain a consistent appearance for Sustainability Office marketing materials.



**Elizabeth Hoffmann**

Elizabeth was initially contacted through the Alumni Mentor program and was later engaged as an unpaid intern to assist the Urban Forestry Committee with the Walton Oaks restoration project. Elizabeth has conducted basic research on a variety of restoration topics, participated in work days, and has created outreach materials for the committee to use to promote the existence of this park to the community in hopes of recruiting volunteers and potentially establishing a Friends group for the park.

