

LIFETIME
LEARNING
INSTITUTE

S U N Y
NEW PALTZ



Learning for the fun of it

FALL 2022 COURSES



NON CREDIT AND NON COMPETITIVE COURSES

SPONSORED BY SUNY NEW PALTZ

THE OFFICE OF GRADUATE AND EXTENDED LEARNING

ROAD SCHOLAR – LLI RESOURCE NETWORK

LLI IS A VOLUNTEER MEMBER-RUN ORGANIZATION

REGISTER BY

AUGUST 19

CLASSES
FILL EARLY

This year marks the 15th Anniversary of LLI SUNY New Paltz!

Created in 2007 by Lyn Mayo along with a group of friends and activists who researched and amassed information from other organizations such as Elderhostel and Bard to help form this organization based on volunteerism. They compiled the curriculum, found presenters and classroom sites, developed the necessary academic association and printed a catalog. By August of that year, classes were filled and that marked the beginning of LLI at SUNY New Paltz.

Today LLI still offers diverse and enriching learning experiences for adults, both in class and by zoom. It provides opportunities and encouragement for individuals to use their knowledge and skills in creative ways as well as interaction. Our volunteers work hard to find presenters with interesting offerings, find space for the classes, put out a catalog, and register members for classes and more. Events, day trips, guest speakers, brunches, and a newsletter keep members informed.

All this and more done by volunteers.

Become a volunteer and help keep us strong.

You won't regret it!

Theo Pappas

President LLI SUNY New Paltz 2022-2023

MEMBERSHIP AND FEES

You must be a member to register for classes. Annual membership is \$120 per person. The 2022–2023 membership year runs from July 1 through June 30. If you choose a per semester membership (Fall or Spring), the fee is \$75.00 per person per semester which also includes the Winter session. Membership fee is non-refundable.

REGISTRATION

This catalog presents classes covering the coming Fall semester. For courses with size limits, members may be limited to enrolling in one or two such classes. **REGISTRATIONS WILL BE CONSIDERED ON A SPACE AVAILABLE BASIS IN THE ORDER RECEIVED, WITH THE EXCEPTION OF LOTTERY CLASSES (See below).** Registration confirmation letters will be mailed in early September. Wednesday classes begin September 21 and Friday classes begin September 23. Thursday (ONLINE) classes begin on September 22. **AUGUST 19 IS THE SUGGESTED DEADLINE FOR REGISTRATION.**

Registration will be online at newpaltz.edu/lifetime

YOUR REGISTRATION IS NOT COMPLETE UNTIL PAYMENT IS RECEIVED.

**PLEASE MAKE YOUR CHECK PAYABLE TO CAS/LLI, (INCLUDE MEMBER NAME) AND SEND TO:
REGISTRAR LIFETIME LEARNING INSTITUTE PO BOX 275 NEW PALTZ, NY 12561**

THE LOTTERY SYSTEM

Some classes have a limited size number established by the presenters. It has been decided to implement a lottery system for these classes. Lottery classes (limited to 10 participants or less) are indicated in the registration form by an **LO** and in the catalog with the word **LOTTERY**. The Lottery process will begin on the day after the close of registration and will apply only to classes with limited seats. The names of all the members who have indicated their interest in the Lottery class will be placed in a hat. Names will be randomly drawn until the class is filled. A waiting list will be created from the remaining names.

FALL 2022 LLI COURSES

There are 25 classes being offered this Fall. Classes will meet at several locations on Monday, Wednesday, and Friday and Online on Wednesday afternoon and Thursday.

CC - New Paltz Community Center

SJ - St. Joseph's

EP - One EPIC Place

SU - SUNY Theater

WP - Woodland Pond

ZM - Online

PARTICIPATION AND CLASS DECORUM POLICY

SUNY New Paltz Lifetime Learning Institute (LLI) members may experience a wide range of teaching styles guided by our presenters, all of whom are volunteers. In order to promote a dynamic learning environment and encourage a sense of community that is comfortable and accommodating, all LLI members are expected to behave in a manner that is respectful and courteous, to arrive at their classes on time, and to comply with reasonable requests made by the presenter.

Admission and participation in classes are within the sole discretion of LLI. LLI reserves the right to revoke admission or terminate or limit class participation or revoke membership at any time if LLI's Council officers reasonably determine a participant's condition, behavior or actions are inappropriate or disruptive.

FALL 2022 COURSES AT A GLANCE

WEDNESDAY EIGHT-WEEK COURSES

Story-Telling With a Twist.....	5
Landmark Literature of the 1920's*	5
The History of Writing*	6

WEDNESDAY EARLY FOUR-WEEK COURSES

America's Secret Weapon in World War II: The Ritchie Boys	6
---	---

WEDNESDAY LATE FOUR-WEEK COURSES

Understanding Earth's Climate System	7
Changing Strategic Balance in the Middle East	7

FRIDAY EIGHT-WEEK COURSES

Introduction to Tap Dance.....	8
Magical Marvelous Memoir Writing.....	8

FRIDAY EARLY FOUR-WEEK COURSES

Beading 101	9
Boxing for 'Boomers' and All Other Seniors	9
Native American History and Customs.....	10
Embroider Yourself	11

FRIDAY LATE FOUR-WEEK COURSES

Beading 102	12
Contemplative Prayer Practices	12
New Paltz – Antique Road Show	13
Lost Industries Revisited	13
Introduction to Bookmaking.....	13

THURSDAY EIGHT-WEEK COURSES

Current Events Discussion*	14
Reading Willa Cather*	14
Living Sustainably: Nature's Way*	15

THURSDAY EARLY FOUR-WEEK COURSES

Thanatology in Tibetan Buddhism*	15
--	----

THURSDAY LATE FOUR-WEEK COURSES

Science Potpourri 3 *	16
-----------------------------	----

SPECIAL COURSES

The Wonderful World of Mah-Jongg.....	18
Book Discussion - Special Interest Group*	18
From Page to Stage – Shakespeare in the Works.....	19

* Indicates that this course is offered online via Zoom

WEDNESDAY EIGHT-WEEK COURSES (W-8)

September 21 and 28; October 12, 19 and 26; November 2, 9, 16 (no class on October 5)



STORYTELLING WITH A TWIST

Nancy Van Laan

New Paltz Community Center (CC)

9:15-10:30

Class Limit: 12

This course will cover a number of prompts to enhance your writing skills, focusing exclusively on fiction. There will be quick in-class exercises, but after the first couple of weeks, most of your written work will be composed and completed outside of the classroom. This will be in the form of “pass-along stories” created by groups of three or four class members. Each week these stories will be read aloud. Sound like fun? It will be and the added bonus is that your skills are bound to improve!

Nancy Van Laan, retired author of numerous children’s books, taught Creative Writing at Rutgers, Keane College in NJ and Bucks County Community College in Pennsylvania. She was also Head of the English Department at Solebury School, a private boarding school in Pennsylvania for six years before she quit to write full-time during the 80’s.



LANDMARK LITERATURE OF THE 1920s

Chuck Mishaan

ONLINE (ZM)

1:15-2:45

The Roaring 20s saw the production of some of the greatest and most important literature of the 20th Century. Writers set a high standard of imagination and achievement in poetry, fiction and drama. Although the cornucopia of outstanding work is more than one semester could possibly address, this course will offer a survey, with select in-depth explorations, of the literary legacy of this ‘Roaring’ decade. The list of notables we might look at include T. S. Eliot, James Joyce, Edith Wharton, Scott Fitzgerald, Virginia Woolf, Langston Hughes, Eugene O’Neill, Ernest Hemingway, William Faulkner, Gertrude Stein and so many more.

Chuck Mishaan has been presenting courses at SUNY New Paltz for many years, including his popular *Opera as Politics* series and recently, *The Roaring 20s*. His commentary on the intersection of politics and the arts continues with this course.



THE HISTORY OF WRITING

Eric Chambers

ONLINE (ZM)

3:00-4:30

How did we get from making marks on stones and leaves to full-length, novels, emails and billboards? What does writing have to do with language? Why is writing so important, anyway? This class is going to talk about the history of writing systems around the world, from its beginning as symbols to the many forms it takes today.

Eric Chambers holds a Ph.D. in linguistics from the Graduate Center at the City University of New York, and currently teaches classes in linguistics for SUNY New Paltz.

WEDNESDAY FOUR-WEEK EARLY COURSE (W-4-E)

September 21 and 28; October 12 and 19 (*no class on October 5*)



THE RITCHIE BOYS

Rena Bonne'

New Paltz Community Center (CC)

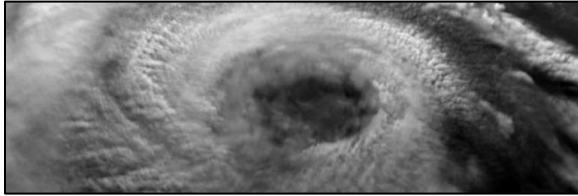
11:00-12:15

A special German-Austrian unit of the US Military Intelligence, the "Ritchie Boys" (named for the Maryland army base where they were trained) were composed of German speaking immigrants, many of whom were Jews escaping the Nazis. Trained in methods of interrogation, counterintelligence and psychological warfare, The Ritchie Boys are credited with 60% of the intelligence provided during WWII. In this class we will view interviews with surviving Ritchie Boys and read about their remarkable contributions.

When the original Ritchie Boys documentary was first presented for public viewing, **Rena Bonne'** discovered that her father had been a *Ritchie Boy*. Like many Hitler refugees, he was reluctant to discuss his personal history, so she began to research his army unit. Although her doctorate and experience revolve around literature, she was able to put them to good use learning about these remarkable men.

WEDNESDAY LATE FOUR-WEEK COURSES (W-4-L)

October 26; November 2, 9, 16



UNDERSTANDING THE EARTH'S CLIMATE SYSTEM

Chris Bernabo

Woodland Pond (WP)

9:15-10:30

Gain an understanding of the Earth's climate system, the history of past climates, the forces that drive climate change and the significance for our future. Climate is a key environmental variable that has continually shaped the planet and life. Learn the history of climate from primordial snowball, to eons of worldwide tropics, to the periodic Ice Ages and now human-induced global warming. Understand the mechanisms of climate change and how the atmosphere/oceans/land and biosphere interact. We will conclude by discussing how human activities are impacting our future.

Chris Bernabo has a PhD in Climatology. He has worked for governments, businesses, universities and environmental organizations on projects in the U.S., Europe and Asia. His activities include research, teaching and consulting.



CHANGING STRATEGIC BALANCE IN THE MIDDLE EAST

Lewis Brownstein

New Paltz Community Center (CC)

11:00-12:15

The old paradigm of the Middle East in which the core conflict was between Israel and the Arabs is woefully out of date. The Middle East is in a period of rapid transition with the rise of competing regional power centers and the ever-increasing intervention of outside powers. This short course will trace the origins of the present state of affairs and try and project where the region may be going.

Lewis Brownstein is a retired professor of international relations and has been teaching and lecturing on the Middle East since 1975.

FRIDAY EIGHT-WEEK COURSES (F-8)

September 23 and 30; October 14, 21 and 28; November 4, 11 and 18 (no class on Oct 7)



INTRODUCTION TO TAP DANCE

Anita-Jean McMonigle

One EPIC Place (EP)

1:15 -2:30

Always wanted to tap dance and release your inner Fred Astaire or Ginger Rogers? Come and join us for a fun introduction to this fun introduction to this Terpsichorean art. Basic tap steps and fun combos will be taught. No additional fees required. Tap shoes are best, but hard soled shoes will be fine. No sneakers, Please!!

Anita Jean McMonigle has owned and operated the *Anita-Jean Dance Theatre* dance studios in the Newburgh, New Windsor, and Marlboro area for 54 years. She currently teaches adult tap at the Town of Newburgh Recreation Center and children's dance at the Alphabet Tree in Marlboro. She currently serves as Chair emeritus of the National Association of Dance and Affiliated Arts, Inc. She has also worked as choreographer for many local theatre groups as well as high school musical productions.



MAGICAL MARVELOUS MEMOIR

WRITING

Susan Slotnick

St Joseph's (SJ)

3:00-4:15

Class Limit: 20

When we reach the time of life where a lot of our past is behind us, but informs our present every day, it's time to tell our story. We all have a unique and important story to tell. Whether or not we want to publish our story, it is meaningful to everyone who has loved and loves us.

In this course you will identify what part of your history you want to highlight. Who do you want to read your story? What moral conundrums will surely arise? Do you write about yourself only or about others? How can you get permission from people in your life that impacts your narrative?

Although this is not a how-to writing course, inevitably during the course your writing will surely improve. Let's celebrate and share our lives with each other in a safe non-judgmental environment.

Currently and for the last 16 years, **Susan Slotnick** has gone behind the walls at The Woodbourne Correctional Facility and DFY (Division For Youth prison) every Friday and Sunday to bring the joy of modern dance to incarcerated men and boys.

FRIDAY EARLY FOUR-WEEK COURSES (F-4-E)

September 23 and 30; October 14, 21 (no class on Oct 7)



BEADING 101

Helen Tennenbaum

St Joseph's (SJ)

9:15-10:30

Class Limit: 10 **LOTTERY**

Beading 101 is a beginner class. Learn two beading stitches and create a project with each. Learn about beading tools and supplies. All are welcome. Please bring small scissors

Helen Tennenbaum is a retired elementary teacher. She has always enjoyed doing crafts. Beading became one of her favorite hobbies. She has always enjoyed sharing her knowledge and creativity with others

Materials Fee: \$12.00

**Do you have a skill or hobby
you would like to share?
Contact the Curriculum
Committee through LLI at:
845-257-2892**



BOXING FOR "BOOMERS" AND ALL OTHER SENIORS

Reverend Howard B Major III

New Paltz Community Center (CC)

10:30-11:45

Non-contact fitness boxing is great exercise for any age—including seniors. According to the [Harvard Health Letter](#), fitness boxing for older adults:

*improves balance, helps posture
strengthens upper-body and core,
boosts endurance, increases alertness
enhances mood, improves hand-eye
coordination*

The class is for anyone defining herself/himself as "senior". Full mobility and agility are not requirements. Participants can remain seated. For all exercises, substitutions are offered for mobility-impaired participants. No special equipment is required.

Howard B Major III is a 72-year-old semi-retired pastor who has boxed for seven years. He has fought in three sanctioned master's competitions. He is a certified boxing trainer and works with the Parkinson's boxing program at Gleason's Gym. He has assisted Coach Jackie Atkins with the teen boxing class at the 92nd Street Y.



**NATIVE AMERICANS:
HISTORY AND CUSTOMS**

COORDINATOR: Judith A Boggess

Woodland Pond (WP)

11:30-12:45

Sept. 23: Susan R Higgins (*Singing Rain*)

The Importance of Corn

Corn plays a major role in both food and religious aspects of Native cultures in the Americas. The difference of how corn looked when early settlers first arrived and how corn looks today will be discussed. Nothing was ever wasted, even the corn husks had many purposes and were used in a variety of ways. They were used in making corn husk dolls and are still being made by various Native American Nations all over the United States and Canada. Susan will tell the story of the Corn Husk Woman and why corn husk dolls have no faces. She will teach you how to make your own corn husk doll according to the teachings of her Cree/Ojibway relatives. There will be some Native American artifacts on display, all of which are from the North Eastern areas of the United States.

Sept. 30: Judith A. Boggess (*Laughing Owl*)

The Red Feather Drummers and Singers

The Red Feather Drummers and Singers are an all woman intertribal drum group dedicated to keeping Native American Heritage and Music alive for future generations. How did the drum originate, what is it made of and why and what is drum etiquette? The group will perform some songs and explain their origins. If time allows the audience will participate in a friendship dance.

Oct. 14: Nick Miles

Telling Stories

From a Native perspective, storytelling is essential for the survival of one's culture and the stability of one's community. Entertainment, Education, one's Spiritual Foundation are elements contained in many a story that helps us understand and appreciate all of life around us. Why the Drum is important in Native culture (with a couple of songs all can share in singing) and several stories will be shared. Stories help us to stay connected with the past, future and each other.

Oct. 21: Sally Bermanzohn

Contributions of Native American Women

Before Columbus, millions of indigenous people lived in thousands of tribes throughout North and South American. The woodlands that surround the Appalachian Mountains in what is now eastern United States and Canada were the home of many tribes who lived in harmony with nature. Women played a powerful role as farmers and leaders in these societies. In light of the climate crisis we face today, much can be learned from Native American Women of the Eastern Woodlands.

Susan R Higgins (*Singing Rain*) was born at home in the village of Saugerties. Her grandfather, of Cree descent, gave her the Native name of Singing Rain. She is both of Mohawk and Cree heritage. She has embraced her Native heritage, trying to learn as much as she can about her Native relatives. Susan has been playing on a Native American drum, and performing songs, dances, stories and crafts for over 18 years in public venues all over New York State. She is a member of the Association of Native Americans (ANA) as well as a member in an all women's Native American drum group.

Judith A Boggess, MSC aka *Grandmother Judith Laughing Owl* has been a member of the Association of Native Americans of the Hudson Valley since its inception in 1970's. Along with the men's drum group, Cloud Breakers, the Red Feathers give presentations to local organizations helping to keep Native American heritage alive for future generations.

Rev. Nick Miles (*Pamunkey/ Powhatan*) is the Lead Singer and Drum Keeper of the Cloudbreaker Society, Association of Native Americans of the Mid-Hudson Valley.

Sally Bermanzohn is Professor Emeritus from Brooklyn College CUNY, and taught political science including Native American Studies. She is the author of *Through Survivors Eyes, Violence and Politics* and *Indian Annie: A Grandmother's Story*.

ON THE COVER



Autumn Afternoon in the Hudson Valley
Carole Conover Consigliere, Photographer



EMBROIDER YOURSELF

Judy Reichler

St. Joseph's (SJ)

1:15-2:30

Class Limit 10 LOTTERY

Do you have something you'd like to decorate? A favorite shirt with a hole or stain you'd like to hide? A fabric meditation journal? Learn to make simple embroidery stitches (beads, too) to embellish apparel or accessories or include in a fabric art piece. Students will design and make a colorful sampler as a reminder of how to make the stitches.

Judy Reichler has had a lifelong love affair with fibers and beads. She has previously taught knitting, embroidery, and other fiber arts. She is a member of the American Embroidery Guild and a former member of the Auspicious Stitches group at the Rubin Museum in New York City.

FRIDAY LATE FOUR-WEEK COURSES (F-4-L)

October 28; November 4, 11 and 18



BEADING 102

Helen Tennenbaum and Linda Worden

St Joseph's (SJ)

9:15-10:30

Class Limit: 20

It is best to have some previous experience in beading for Beading 102. We will do two beading projects that will be new to the class. Please bring small scissors.

Helen Tennenbaum is a retired elementary teacher. She has always enjoyed doing crafts. Beading became one of her favorite hobbies. She has always enjoyed sharing her knowledge and creativity with others

Linda Worden started her love for beading in one of Helen's LLI classes. She was a star pupil and now assists Helen.

Materials Fee: \$12.00



CONTEMPLATIVE PRAYER PRACTICES

Reverend Arlene R Wilhelm

One EPIC Place (EP)

11:00-12:15

Class Limit: 15

Contemplative prayer practices in various forms will be explored. We will first learn and practice centering prayer and then, as a group, decide upon what we will cover for the next three classes. The classes are participatory and are open to people of all faiths or no particular faith at all. No previous experience is required. If you prefer to sit on the floor, please bring a cushion.

Arlene R. Wilhelm is a retired/repurposed ordained Minister of Word and Sacrament in the Reformed Church in America. She is also a certified Spiritual Director/Companion and a certified Christian Educator. She practices centering prayer and mindfulness meditation. Arlene has taught for LLI before and many times in churches and other educational settings. In the past, she has practiced yoga and its spiritual disciplines for many years. Currently, she is practicing QiGong and Tai Chi Easy.



NEW PALTZ – “ANTIQUES ROAD SHOW”

Walter Marquez

St. Joseph’s (SJ)

11:00-12:15

Bring your treasures to be reviewed and appraised. We will review antiques and collectibles along with fakes and reproductions. General information on dating and appraising antiques.

Walter Marquez is the owner/manager of Antiques Barn and Antiques on Main at Water Street Market. He is a past president of Ulster County Antique Dealers Association.



LOST INDUSTRIES REVISITED

Marilou Abramshe

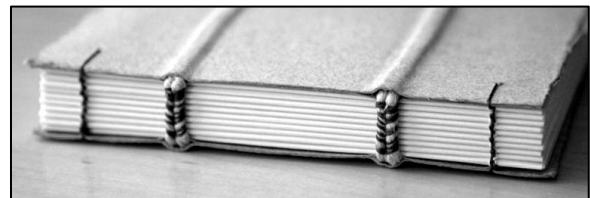
Woodland Pond (WP)

1:15-2:30

The evidence of Ulster County’s Lost Industries can be found in a variety of forms including documents, visual material, and physical artifacts as well as oral and digital sources. Take a trip back in time to visit some of the industries that were vital to Ulster in the past. Visit the mills that utilized the many streams and rivers; the creameries that developed along the newly established railroads; the bluestone and brick industries, two natural resources that helped build New York City. The classes will include new information built

upon the original classes given several years ago.

Marilou Abramshe presented her first Lost Industry class at LLI in 2017. Since that time she has continued to research various industries that no longer exist in Ulster County and learn more about them. She believes that history helps us understand that our lived experience may differ from that of our ancestors, yet we are similar in our goals and values. It is by studying the past that we can hopefully prepare for the future.



INTRODUCTION TO BOOKMAKING

Maureen Cummins

St Joseph’s (SJ)

3:00-4:15

Class Limit: 8 LOTTERY

In this workshop students will be introduced to the basic materials and methods of bookbinding and leave with two or three completed books. They will also receive handouts on suppliers, terminology and book anatomy. The instructor will show examples from her collection of book structures, chapbooks.

Maureen Cummins is a graduate of Cooper Union. After five years apprenticeship with binders and printers in New York and California, she established her own print shop in Brooklyn, printing limited edition artist’s books. She has also taught at print shops across the country and has received numerous grants and awards including a Pollock-Krasner award.

Materials Fee: \$25.00

THURSDAY EIGHT-WEEK ONLINE COURSES (T-8)

September 22 and 29; October 13, 20 and 27; November 3, 10 and 17 (no class on October 6)



CURRENT EVENTS DISCUSSION

Robert Arthurs

ONLINE 9:00-10:30

Class Limit: 15

This course is a discussion group of current events focusing on the most significant international and national news. Each week before class, the leader/facilitator will email a few key articles or editorials to the participants for their reading and class discussion. The facilitator will manage the discussion to maximize participation and the coverage of the following while maintain basic decorum. Participants should come prepared to discuss the issues presented in the provided articles plus other leading newspapers, journals and other media sources. It is essential to have a functioning email address and access to the internet.

Robert Arthurs is a musician, music educator, performer, and recording artist. He was on the faculty of the Music Conservatory of Westchester from 1972 to 2005. From 1990 to 2005 he served as dean of students and faculty at the school and was also the head of the jazz department. In the mid-1980s he returned to college to work toward receiving a degree in Russian language and literature. After receiving his BA from Lehman College (CUNY), he enrolled in SUNY Albany's Russian Department to pursue a masters degree. His semester at Moscow State University was part of that program. He received his Masters in Russian Language and Literature in 1992.



READING WILLA CATHER

Meta Plotnik

ONLINE 11:00-12:30

Willa Cather wrote many novels during the 20th century that trace aspects of United States history, social issues, religion, and gender. We will see Cather's place in the context of her contemporary writers. We will read *My Antonia* and *Death Comes to the Archbishop* and one other novel.

Participants are expected to read, share reactions, quotations, and connections with other novels. Please read before you watch films of the novels.

Meta Plotnik received her Ph.D. in English from the Graduate School at City University of New York (CUNY). She taught English at Nassau Community College for 33 years and Women's Studies Courses for the last 20 years. Courses included English literature, mythology, images of women and men in literature, women writers, introduction to Women's Studies, and the Goddess in World Religions. At LLI she presented the Goddess course, a course on George Eliot's *Middlemarch* and a course in Reading Thomas Hardy.



LIVING SUSTANABLY: NATURE'S WAY

Lyla Yastion

ONLINE 1:00-2:30

Recent scientific reports warn that human-induced climate change is accelerating at an alarming rate and that it is just a matter of time before the dire effects are felt by all species, including our own. It is incumbent upon humanity to understand how we participants in Western industrialized culture have disturbed Earth's natural sustainability and how we can remedy the situation by adopting a sustainable life style based in the perception of Earth as a living, nurturing organism worthy of our respect and care. We will trace the history of how human beings, through a cultural worldview of mastery over nature, have arrived at this perilous juncture, examine alternative perspectives – particularly that of indigenous cultures – and explore ways to transform society by cultivating a new mindset in relationship to the natural world.

Lyla Yastion received a doctorate in anthropology from SUNY Albany and has taught courses in anthropology and religious studies at the college level for 19 years. As recently as 2018 she was part of the adjunct faculty at SUNY New Paltz. Lyla has written two books: *Pause Now: Handbook for a Spiritual Revolution* and *Homesick: finding our way back to a healthy planet*. The course *Living Sustainably: Nature's Way* is based on the latter book. Lyla is also a reiki master with training in shamanic healing.

THURSDAY EARLY FOUR-WEEK COURSE (T-4-E)

September 22 and 29; October 13 and 20 (no class on October 6)



THANATOLOGY IN TIBETAN BUDDHISM

Shewang

ONLINE 11:00-12:30

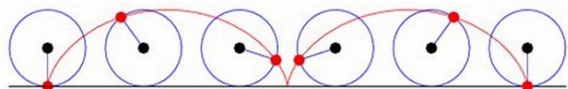
Tibetan Buddhism offers extensive knowledge pertaining to death. Like having a detailed map of an unfamiliar place, this guidance can help us prepare ourselves to navigate the

death process with more confidence and less fear, leading to a favorable transition. This introduction will explore the various stages of the dying experience, related meditation exercises, and directions on dying, death, and after-death practices from a Buddhist perspective.

In 1995, **Shewang** met her principal spiritual teacher, a renowned Tibetan Buddhist master who opened the door to the limitless possibilities of liberation. Since then, she has continued receiving teachings directly from many eminent lineage holders including instructions on dying, death, and transference of consciousness.

THURSDAY LATE FOUR-WEEK COURSE (T-4-L)

October 27; November 3, 10 and 17



SCIENCE POTPOURRI 3

COORDINATOR: Carole Heyl

ONLINE 3:00-4:30

Science encompasses a wide variety of topics. This series deals with the Past, the Present and the Future. Diverse topics will be presented focusing on Mathematics, Astrophysics, Botany and Archaeology. From the beginning of time, man has sought the answer to the age-old question of:

Who? What? When? Where? Why? How?

Oct 27 William Tuel

History of Math: Behold the Amazing Cycloid!

Without consulting a reference, can you define what a cycloid is? Do you realize you see one in your morning coffee? We'll discover some interesting properties of the cycloid, and learn why it caused conflict among mathematicians 400 years ago.

Nov 3 Jeremy Heyl

Astrophysics: There's More Out There than Meets the Eye

What is the multiwavelength sky? Photons of different energies give astrophysicists new insights about how stars form, die and what remains. What is the electromagnetic spectrum and why do astronomers need so many different kinds of telescopes (Chandra, Webb, Hubble and more) including ones that don't even detect light?

Nov 10 Bill Bakaitis

Introductory Mycology for the Curious

Naturalist - The Biology and Life Cycles of Fungi

Mushrooms and other Fungi occupy their own special rank in the biological sciences, the Fifth Kingdom. Neither Plants nor Animals, fungi have unique sexual lives, feeding strategies and protein compositions which are frequently exploited for their culinary, medical and ecological potentials. The Mid-Hudson region is home to thousands of species, many quite beautiful in form, texture and color which come and go with the vagaries of weather, rainfall and season; an ever-changing Easter Egg Hunt for the curious naturalist.

Nov 17 Francesco Berna

What Happened to the Neanderthals?

Neanderthals were the closest relatives to Homo sapiens and disappeared around 40000 years ago. We will review the latest scientific evidence to explain the demise of this important member of the human family.

William Tuel, PhD is a retired IBM Software Engineer, with an interest in the history of science. He has presented LLI courses on Mathematics, Biology, Computers, and Electricity.

Jeremy Heyl, PhD is a theoretical and observational astrophysicist and a Professor at the University of British Columbia's Department of Physics and Astronomy in Vancouver, Canada. His recent research has focused on compact objects: white dwarfs, neutron stars, and black holes.

Bill Bakaitis taught at Dutchess Community College for 38 years during which time he was granted sabbaticals to study graduate level Mycology at both SUNY New Paltz, and at the NY State Museum in Albany. He is a popular speaker who has given educational programs in Mycology for many groups in the Mid-Hudson Valley. In 1983 he founded the Mid-Hudson Mycological Association, and since 1984 has worked with the Poison Control Networks.

Francesco Berna, PhD is an Associate Professor in the Department of Archaeology at Simon Fraser University (Burnaby, BC, Canada) where he teaches introductory and advance courses in Archaeology. His current research focuses on the origin of modern behavior and the onset of the controlled use of fire in Africa, Europe and the Middle East.

**Use your LLI membership
card for a discount at
SUNY Fine and Performing
Arts events**

- **Classes fill early so do not delay your online registration**
- **Limit your choice of classes to a maximum of 6 classes**
- **You MUST have an individual email address**
- **August 19th is the suggested deadline for registration**
- **Mail your check to LLI
Full year - \$120
Fall & Winter Sessions - \$75**
- **Confirmation letters will be mailed in early September**

SPECIAL COURSES (SP)



WONDERFUL WORLD OF MAH-JONGG
Carole Heyl and Ester Williams
New Paltz Community Center (CC)
11:15- 12:30
Mon Sept 19, Oct 3,10,17,24,31, Nov 7,14
Class Limit: 12

This class in American style Mah-Jongg is designed for the beginner who would like to learn a new and fun game. We will start with the basics and learn to create a hand and by the end of the course you will be playing a complete game. Websites will be suggested for practice.

Materials Fee: \$9.00 for a 2022 National Mah-Jongg League card.

Carole Heyl is a former teacher and software engineer. As a child she learned the game watching as her aunt played with friends. She began playing regularly after retiring.

Ester Williams worked in the activities department of adult day care for many years. She has been playing Mah-Jongg regularly since retirement.



BOOK DISCUSSION:
SPECIAL INTEREST GROUP
Judy Reichler
Thursday Sept 22, Oct 20, Nov 17
ONLINE 1:00-2:30

The last couple of years have been a challenge for all of us. We will discuss three books that may shed a light on our experience and why some people adapt better than others to solitude and isolation.

Sep 22 | *The Stranger in the Woods*, By Michael Finkel Biography of a shy and intelligent 26 year-old man, who retreated to the Maine woods, where he became a hermit and had no human contact for 30 years.

Oct 20 | *Where the Crawdads Sing*, By Delia Owens Coming-of-age story about a young girl left to care for herself in the isolated swamps of the Ozarks.

Nov 17 | *Quiet*, By Susan Cain Exploration of introverts and extraverts, including the types, influences, and how we see them.

Judy Reichler likes to read and discuss books that raise interesting personal or social issues. Judy will facilitate the discussion so that everyone can have the benefit of hearing different perspectives, without judgment

AS YOU LIKE IT



From Page to Stage - Shakespeare in the Works

Explore the development of a production of Shakespeare's As You Like It from script to stage!

We will work in conjunction with the Department of Theatre Arts at SUNY New Paltz, exploring the script, the design process, the rehearsal process, and, finally, the performance.

Class will overlap both the first and second sessions. Three of the four sessions will meet in the evening at 6:00 PM. One session will meet at 3:00PM on Wednesday, September 21st.

Rehearsal dates are TBD, the performance is scheduled for Thursday evening, November 3, at 7:45 PM, followed by a talk back with the cast.

Ticket Fee: \$5.00

Jessica Rothman has been a theatre educator and director of both Shakespeare and Musical Theatre for four decades and has created curriculum guides for Broadway Shows. She is a past NYS Director of the International Thespian Society and a member of SAG/AFTRA.

COVID-19 GUIDANCE FOR IN-PERSON CLASSES

LLI is following state, local and CDC guidance during the COVID-19 pandemic and requires masks and proof of vaccination if required by the organization where the class is held

Proof of full vaccination may include a CDC Vaccination Card or a valid NYS COVID-19 Vaccination Excelsior Pass Plus Card

Lifetime Learning Institute

MISSION STATEMENT

The Lifetime Learning Institute of New Paltz promotes diverse and enriching learning experiences for older adults, provides opportunities for social interaction, and encourages individuals to use their knowledge and skills in creative ways.

(Adopted 3/7/2008)

LIFETIME LEARNING IS ON

FACEBOOK

**SEE PICTURES FROM COURSES, LIKE OUR PAGE,
SHARE WITH FRIENDS,
SPREAD THE NEWS ABOUT LLI.**

FACEBOOK.COM/LIFETIMELEARNING INSTITUTE

FALL 2022 LLI CLASS SCHEDULE

Session	Course	Presenter	LOC	Limit	9:15	10:30	11:00	11:30	1:15	3:00
W-8	8 Wednesdays (Sept 21, 28, Oct 12, 19, 26, Nov 2, 9, 16)									
W1	Story-Telling With a Twist	Nancy Van Laan	CC	12	x					
W2	Landmark Literature	Chuck Mishaan	ZM						x	
W3	The History of Writing	Eric Chambers	ZM							x
W-4E	4 Wednesdays Early (Sept 21, 28, Oct 12, 19)									
W4	The Ritchie Boys	Rena Bonne'	CC				x			
W-4L	4 Wednesdays Late (Oct 26, Nov 2, 9, 16)									
W5	Earth's Climate	Chris Bernabo	WP		x					
W6	The Middle East	Lewis Brownstein	CC				x			
F-8	8 Fridays (Sept 23, 30, Oct 14, 21, 28, Nov 4, 11, 18)									
F1	Tap Dancing	Anita-Jean McMonigle	EP						x	
F2	Marvelous Memoir	Susan Slotnick	SJ	20						x
F-4E	4 Fridays Early (Sept 23, 30, Oct 14, 21)									
F3	Beading 101 LO	Helen Tennenbaum	SJ	10	x					
F4	Boxing For "Boomers"	Howard B Majors III	CC			x				
F5	Native Americans	Various	WP					x		
F6	Embroider Yourself LO	Judy Reichler	SJ	10					x	
F-4L	4 Fridays Late (Oct 28, Nov 4, 11, 18)									
F7	Beading 102	Helen Tennenbaum	SJ	20	x					
F8	Contemplative Prayer	Arlene R Wilhelm	EP	15			x			
F9	"Antiques Road Show"	Walter Marquez	SJ				x			
F10	Lost Industries Revisited	Marilou Abramshe	WP						x	
F11	Bookmaking LO	Maureen Cummins	SJ	8						x
TH-8	8 Thursdays (Sept 22, 29, Oct 13, 20, 27, Nov 3, 10, 17)				9:00	11:00	11:15	1:00	3:00	Vary
TH1	Current Events Discussion	Robert Arthurs	ZM	15	x					
TH2	Reading Willa Cather	Meta Plotnik	ZM			x				
TH3	Living Sustainably	Lyla Yastion	ZM					x		
TH-4E	4 Thursdays Early (Sept 22, 29, Oct 13, 20)									
TH4	Tibetan Buddhism	Shewang	ZM			x				
TH-4L	4 Thursdays Late (Oct 27, Nov 3, 10, 17)									
TH5	Science Potpourri 3	Various	ZM						x	
SP	SPECIAL COURSES	SP1 8 Mondays (Sept 19, Oct 3, 10, 17, 24, 31, Nov 7, 14)		SP2 3 Thursdays (Sept 22, Oct 20, Nov 17)		SP3 (Varies)				
SP1	World of Mah-Jongg	Carole Heyl	CC	12			x			
SP2	Book Discussion	Judy Reichler	ZM					x		
SP3	From Page to Stage	Jessica Rothman	SU						9/21	x
KEY	CC - New Paltz Community Center		EP - One EPIC Place			ST - St Joseph's				
	SU - SUNY, New Paltz		WP - Woodland Pond			ZM - Online				

Registration will be online at newpaltz.edu/lifetime

YOUR REGISTRATION IS NOT COMPLETE UNTIL PAYMENT IS RECEIVED.

PLEASE MAKE YOUR CHECK PAYABLE TO **CAS/LLI**, (INCLUDE MEMBER NAME) AND SEND TO:

REGISTRAR LIFETIME LEARNING INSTITUTE PO BOX 275 NEW PALTZ, NY 12561