

Sustainability at Principia College



Sarah Ungerleider
Center for Sustainability
NSO 2020

What is Sustainability?



- Sustainable development requires that we meet the needs of the present without compromising the ability of future generations to meet their own needs.
- When you live sustainably, it's like extending the Golden Rule through time. Do unto others ...

What is being done on Campus?



- Principia has run on **100% renewable energy** since 2009
 - Our electric power is 100% wind! Solar charging stations on the Pub Patio.
 - Our per capita carbon emissions are less than half the national average
- Principia **eliminated Styrofoam** from campus in 2009
- Principia's **Dining Services** is a "zero waste" operation
 - Five-Star Green Dining Alliance rating!
 - 100% pre- and post- consumer composting
 - Single stream recycling diverts 90% of waste away from the landfill
- The Scramble Room and Piasa Pub have **compostable containers**, cups, straws, napkins, and utensils
- The 2,000-acre **Principia Forest** is managed sustainably



Room for improvement (you can help!)

- Principia uses 2.2 million paper towels per year
 - 221 trees, 18,400 lb landfill waste
 - 184,000 gallons of water; 46,000 lb CO₂ emissions
 - All this so that we can use them for 2 seconds... ☹️
- Principia landfills tons of recycled materials every year
 - Especially at the beginning and end of the semester
 - We need to do better at separating our recyclables!
- Principia hasn't wholly eliminated single-use plastics
 - Good news: campus water bottle sales dropped 84% since 2009
 - Bring your own bag to the Campus Store (and everywhere else)



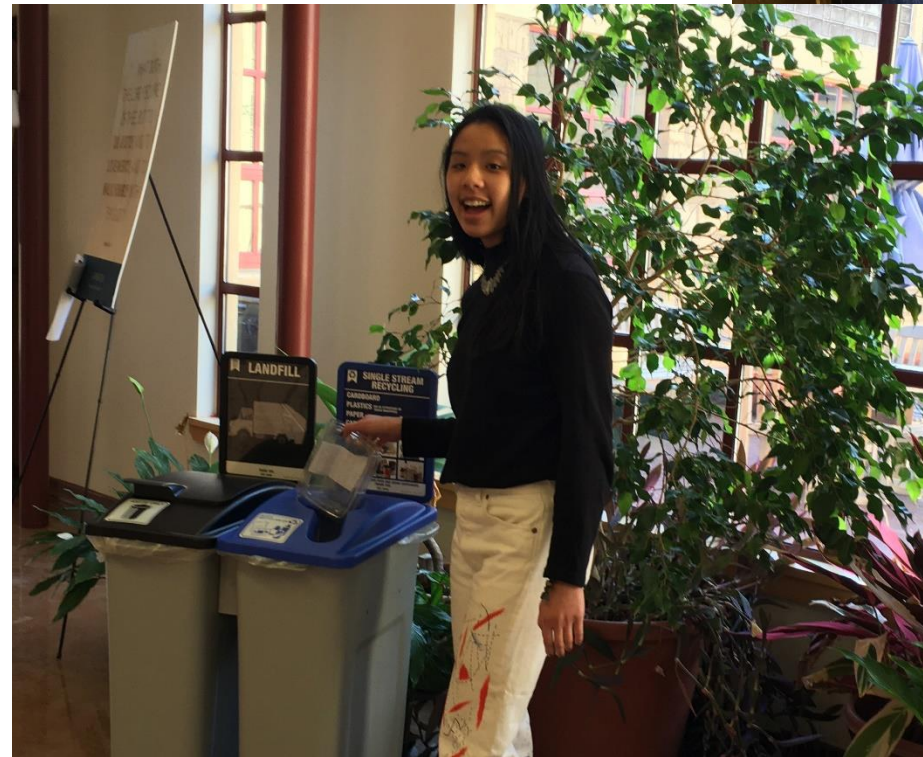
WATER BOTTLE FILL
STATIONS

IN HAY FIELD HOUSE, HEXBERG
TENNIS CENTER, THE OUTDOOR
TENNIS COURTS/ BEACH V-BALL
COURTS AND THE TRACK HOUSE

What can **YOU** do??

Put stuff in the right bin!

- Mixed, Single Stream Recycling (**blue**)
- Composting (**yellow**)
- Batteries (**brown**)
- Landfill (**black**)



“Single Stream”

- “Normal recycling”
 - Paper
 - Glass
 - Cardboard
 - Stiff (molded) plastic
 - Aluminum cans
 - Magazines
- **NOT** “To-Go” BOXES
- **NOT** FOOD
- **NOT** STYROFOAM or PLASTIC BAGS

 **SINGLE STREAM RECYCLING**

CARDBOARD

PLASTICS (NO #6 STYROFOAM OR SNACK WRAPPERS)

PAPER (NO NAPKINS OR TISSUES)

CARTONS

GLASS

CANS

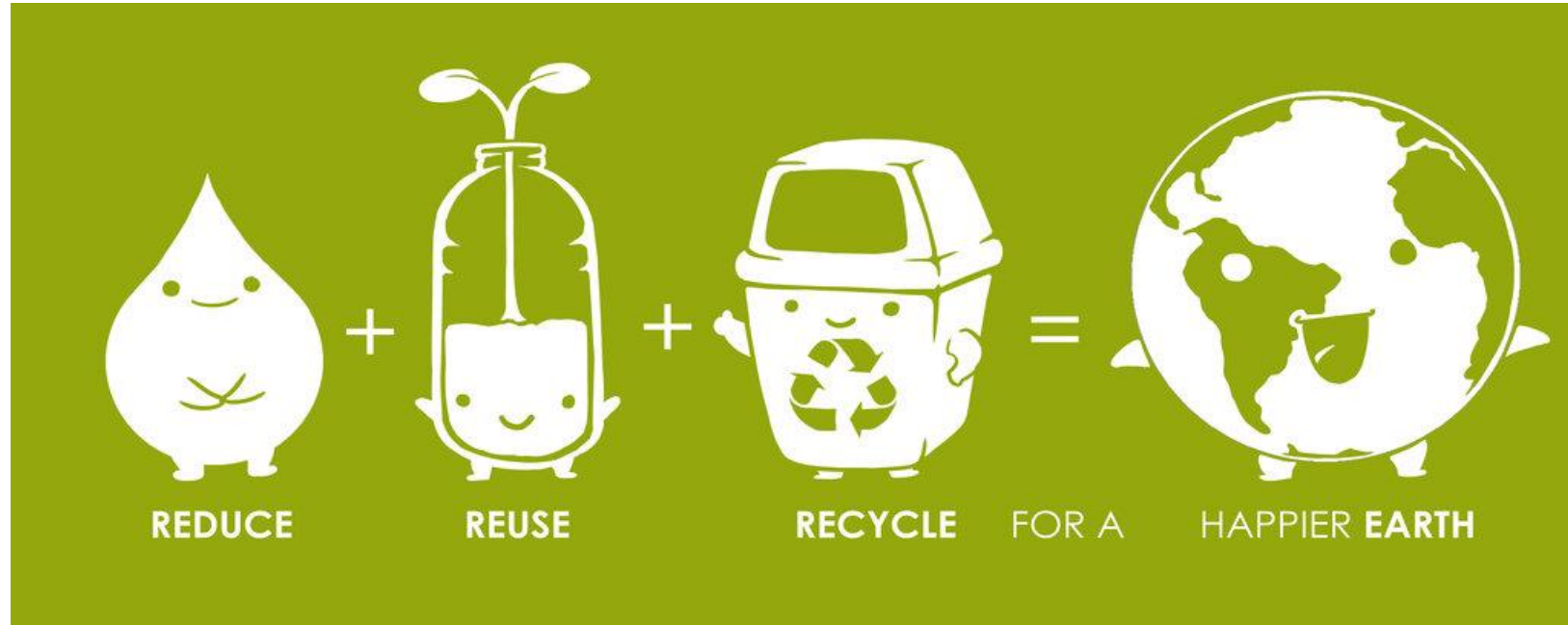


**PLEASE EMPTY YOUR FOOD AND DRINK CONTAINERS.
THANK YOU.**

EXT. 5048

PRINCIPIA COLLEGE

What can YOU do??



“Composting”

- Anything from the Pub!
- To-Go boxes + Cups, Lids & Straws
- Anything from Nature
 - Apple core, banana peel, coffee grounds...
- Composting is regenerative
 - (**Way** better than recycling!)
 - Don't miss a chance to do it!
- Composting will be really important this fall because of dining pick-up / to-go
 - *Please watch for more information*



COMPOST

FOOD SCRAPS
PAPER TOWELS
DINING SERVICES
CLAM SHELLS
CUTLERY
STRAWS
CUPS



NO BODILY WASTE (USED TISSUES, BLOOD, ETC.)

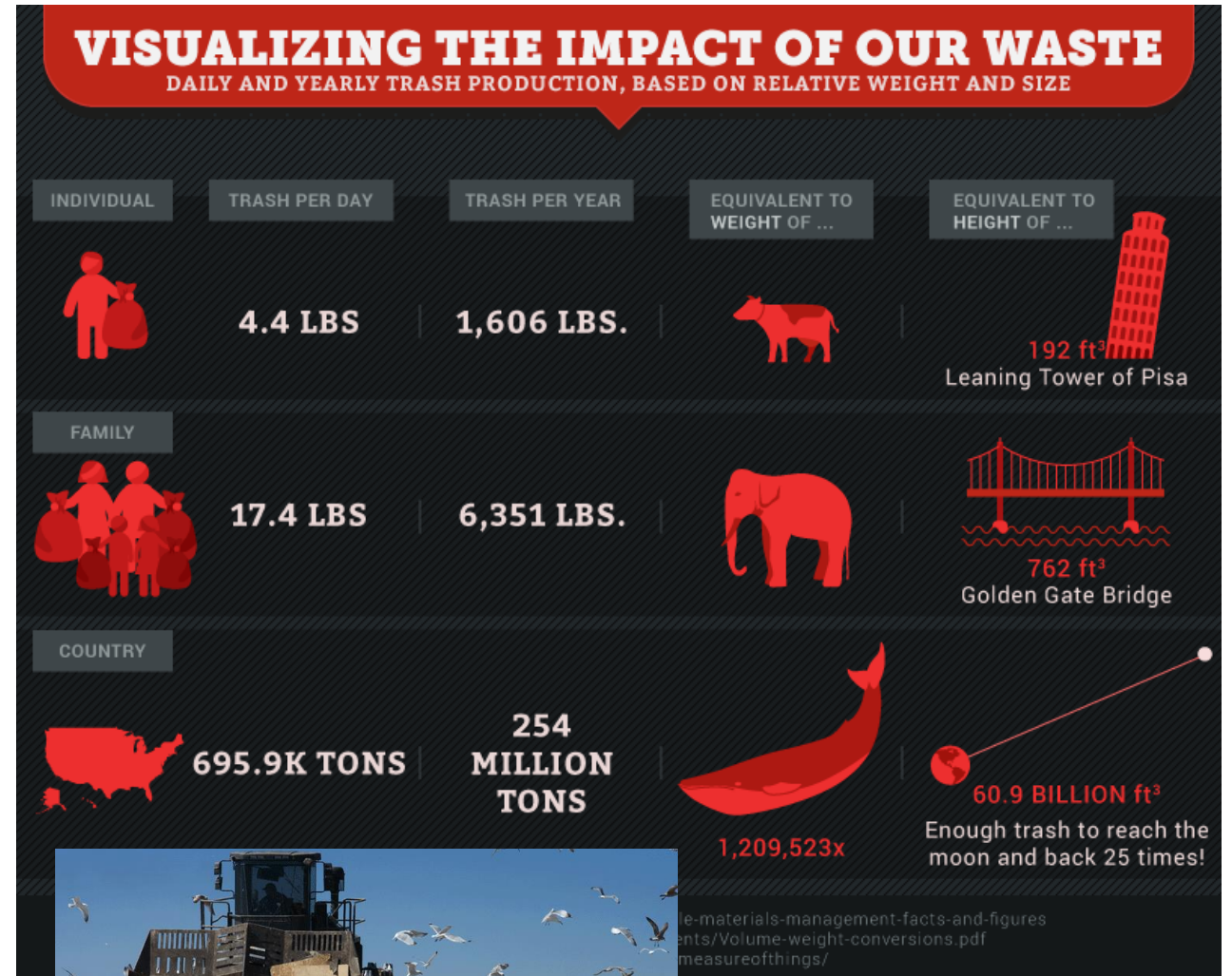
THANK YOU.

EXT. 5048

PRINCIPIA COLLEGE

“Landfill” (Trash)

- Personal Hygiene
 - like tissues and Q-tips
- Rubber, Cloth
- Chip/Cookie Bags
- Styrofoam
- Film Plastic
 - grocery bags
- “Junk”
 - broken pens & binders, toothpaste, tubes, single-use razors, tape, Mylar balloons, chalk



Miscellaneous

- What about my old T.V?
 - **any** electronics can be taken to the basement
 - = anything with a plug or battery
- Clothing “share box”
- Battery collection bins
 - in every house & academic building
- Book recycling
 - Sustainability Club generally announces a book drive every semester



Get Involved – Help Principia be **Zero Waste!**

- Don't be lazy, commit to properly managing your own waste!
- Be a responsible consumer! (Opt for less packaging, bring your own bag)
- Become a House-elected EcoHead!
- Join the Sustainability Club!
- Major or minor in Sustainability!
- Solar charge your phone! (Pub Patio)
- Help organize Earth Day!
- Use water and energy wisely!
- Plant a flower 😊



Questions?

