



COMMITTEE MEETING

APRIL 30, 2018



OFFICE OF SUSTAINABILITY



- Housed under Facilities Services
- Full-time Sustainability Coordinator
- 5 General Sustainability Interns
- 4 Sustainable Landscape Interns
- Visit the “Green Cave” at NSM F-127!

AGENDA

- Report on projects & progress
 - Past projects and events
 - Upcoming summer initiatives
- Open Discussion
 - New ideas
 - Feedback and opportunities for collaboration
 - Earth Day feedback (last half of meeting).

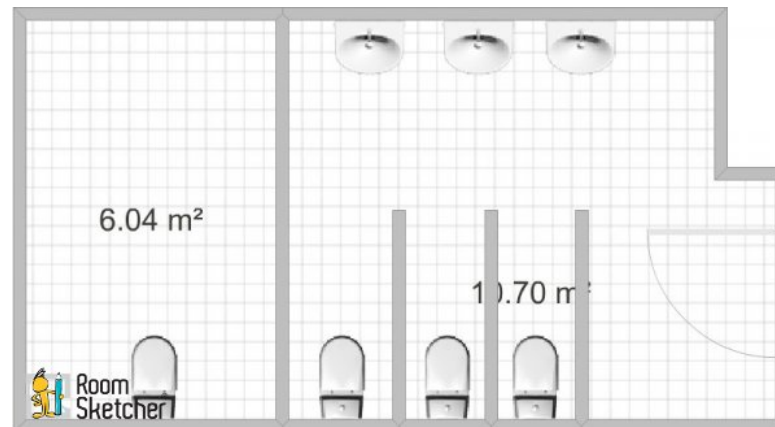
ENERGY- PARKING LOT 4A/4B INSTALL



- Replaced 42 outdated lights in 4a/4b with LED lamps and will be adding Enlighted controls
- Intern pre and post lighting assessment survey
- Saves energy, looks better, and improves safety!

WATER- UTILITY ASSESSMENTS & FACILITIES PROJECTS

- Free landscape irrigation audit from Metropolitan Water District- results coming soon
- Model bathroom project (student-led)?
- Central Plant- DripCycle project
 - Over 1 million gallons per year in re-captured condensate water
 - Participating in MWD rebate program to support project



RECYCLING UPDATE



- Rubbermaid Waste Assessment (4/25)- assistance from 7 students from the GEO 420 class
 - Results from LSU and NSM
 - Will help direct education gaps for recycling and identify potential diversion rates for organics recycling
- Housing Move-Out Recycling Services: intern survey and Salvation Army pick-up (today)
 - 33 survey respondents



COMPOSTING/ORGANICS RECYCLING UPDATE!



- On-site composting system at the Farm with drop-off curbside bin for the community for food scraps
- Commercial organics dumpster arriving over the summer.
 - Meeting with LSU on Thursday to discuss sharing- organics (food, bio-plateware, paper towels, etc.)
 - Food scraps/recycling survey going out campus-wide this week
 - Intern following up over the summer door-door to identify demand for food scraps collection in individual buildings/staff offices

CSUDH | SUSTAINABILITY

CAMPUS URBAN FARM

DROP-OFF COMPOST BIN

Drop off food scraps in this bin. Scraps will be turned into compost for crops growing at the CSUDH Campus Urban Farm.

Acceptable Materials:

Fruit & Veggie Scraps 	Coffee Grounds/Filters 	Tea Bags
Yard Waste Branches, leaves, grass clippings, weeds 	Shredded Paper 	

Please no cooked foods, oils, or meats. Our worms are on a strictly vegan diet to avoid attracting pests.

Visit www.csudh.edu/sustainability for more information
Follow the Campus Urban Farm on Instagram @dhurbanfarm and @csudhsustainability

CAMPUS FARM UPDATE



News and Events Home / Archives / Features / Urban Farm Takes Root on Campus
Urban Farm Takes Root on Campus
April 24, 2018



Central Valley Institute of Interdisciplinary and Environmental Studies is a co-founder of the Urban Farm and advises for the students. On a newly cleared plot of land on the southeast corner of campus, Hawk McFadden provides a guide on how to rotate a three-stage compost system to cultivate fertile soil for planting organic vegetables.

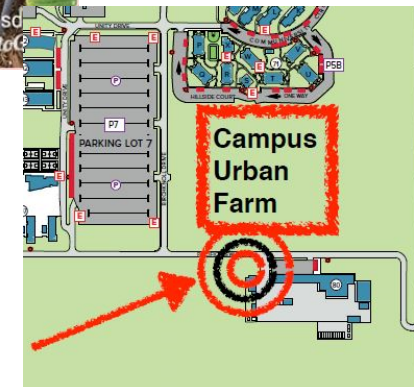
STORY: SUSTAINABILITY

Share: f t g+ in

April is Earth Month: The Green Jobs of the Future Start with Hands-on Learning

By: Kasey Kelly
12/2018

The "Campus as a Living Lab" program uses the CSU itself to teach students real-world skills that are good for the planet and the future of California.



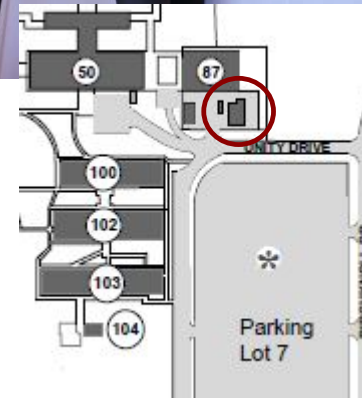
CSU Dominguez Hills students learn about sustainability and urban agriculture from the ground up with a new on-campus farm, which also provides organic produce to food-insecure students. Photo courtesy of CSU Dominguez Hills.

- Thank you to all the service-learning and general volunteers that helped start the Farm!
- News coverage by CSUDH as well as the Chancellor's Office
- Plots available for Fall, basic maintenance over summer.

NET ZERO INNOVATION CENTER LAUNCH



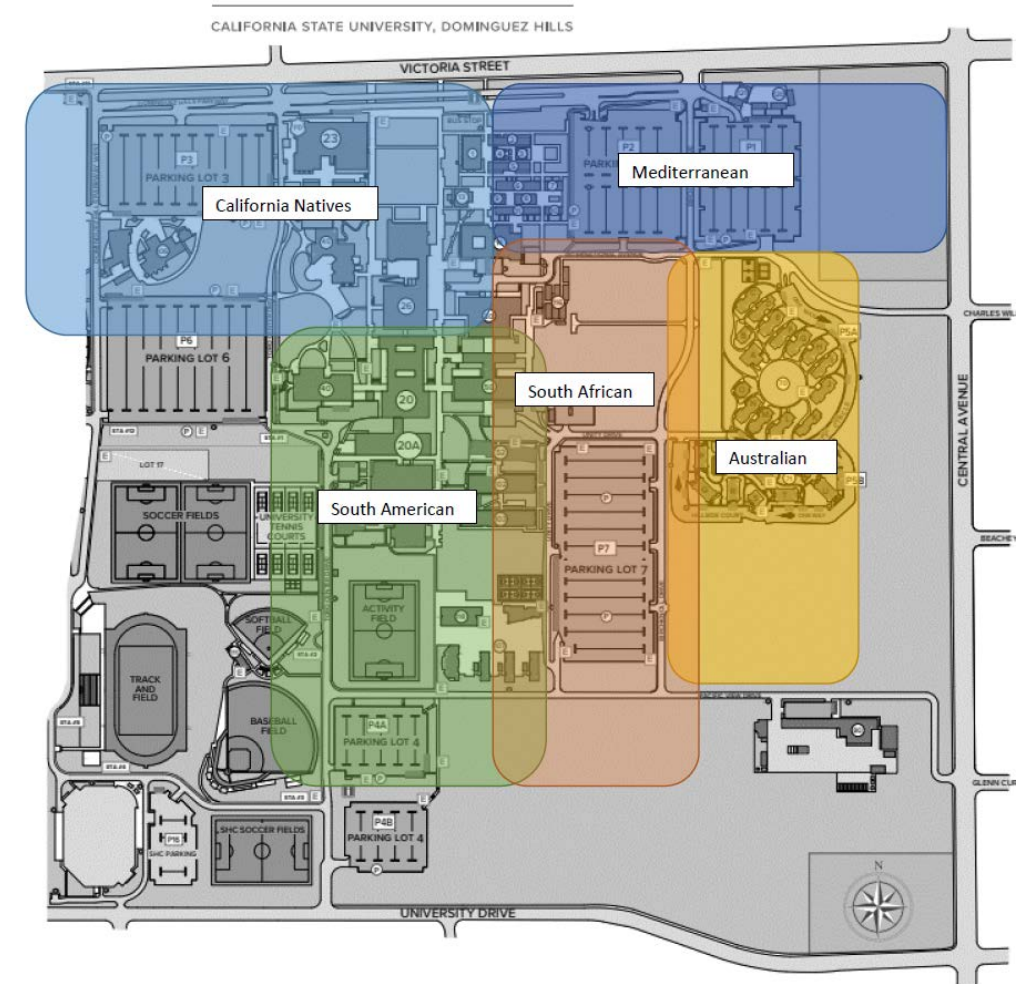
- **Energy:** Solar panels, dashboard, new technologies
- **Water:** rain capture system, rain barrel
- **Waste:** vermicomposting, recycling display



- Launch celebration on 4/26- ASI and Sustainability Intern student-led project (Greenovation grant from Cal State Student Association)
- ~40 Attendees- location for future lunch and learns and educational events

WORKING GROUP UPDATES

- Sustainable Landscape Working Group
 - Final Sustainable Landscape Plan is on website, shared with Capital Planning
 - New and upcoming landscape projects now conform to standards
 - Developing specific plant lists to choose from- geographic region theme (drought tolerant, low maintenance)
- Earth Day Working Group
 - Successful Earth Day on April 19th
 - De-briefing later
- Sign up with and/or reach out to Ellie Perry at eperry@csudh.edu or call x2303



ACADEMICS



- March:
 - Chem 103 EE 101 Presentation and Tour (24 students)
 - Sports Management Tour (20 students)

SPRING EVENTS



- **Race to Reduce Month (March)**
- Housing energy competition:
 - 373 kWh, 64 therms, ~700 lbs CO2e reduced
 - 42 registered participants, 35 units across both Phases (even split)
- Tabling events Monday and Thursday:
 - Recycling Station: 50 people
 - Photo Booth: 50 people
 - Bike Blender (1 day): 120 people
- **Lesson learned:**
Free food > selfies > prizes > recognition

EARTH DAY 2018



- 27 vendors, campus departments, and student groups + 6 Farmer's Market vendors
- 135 students across 7 different classes participated in the extra credit bingo booth game
- Events:
 - Tree Planting event (citrus tree by LSU Loading docks)
 - Green Hero Award Ceremony
 - Speakers
 - Booth Bingo
 - E-waste drop-off

SUMMER PROJECTS

- Commercial Organics Recycling- surveys and program
- Permanent Farmer's Market contract for Fall 2018
- Farm Beautification/Fall Launch
- Green Labs Program- hazardous waste recycling, fume hoods, chemical re-use, etc.
- Green Cleaning Program- restart/re-evaluate
- Furniture sharing program- figuring out best medium for exchanges.
- AASHE STARS Submittal
- Tree Campus USA Certification

OPEN DISCUSSION

- Q&A
 - Next meeting resuming after fall semester starts (August)- last Mondays still good?
- Feedback
- New Ideas

- Earth Day Feedback/Brainstorming (Next)

EARTH DAY FEEDBACK- SURVEY RESULTS

- How clear were the logistics instructions provided? 9/10
- How was the amount of foot traffic/visitor participation at your location? 10/10
- How would you evaluate the event as a whole? 10/10
- Positives: Organization, logistics, booth bingo game, event as a whole.
- **Avoid sharing day with Unity Fest:**
 - “I was bummed out that UnityFest was too far away to enjoy while staffing my Earth Day table. I would have liked to have checked it out but by time I was done at my table, I was too tired and had to go teach class.”
 - “I know you can’t control what goes on, but having two events in one day took away a little bit from the earth day event”
- **Re-think certain placements/more vendor amenities and training:**
 - Group vendors together better. SCE was off by themselves and didn't get near as much traffic as in past years and that is with having more people this year.
 - Possibly provide a small box lunch for vendors.
 - We didn't know about the card raffle when students visited the booth area. An update on what to expect would be helpful next time. Festive music at medium volume.

EARTH DAY FEEDBACK- GENERAL THOUGHTS

- Different e-waste solution?
 - Good Geekz actually is pulling out due to low turn out (also maybe not the best fit). Materials also more restrictive. Campus has free e-waste vendor that accepts everything.
 - People still struggling to remember to bring their electronic waste- location may be too far and car pull up may not be as popular?
- Speaker tent=> Earth Day Trivia rounds on East Walkway?
- More great food! (Meals)
- Different day? (Wed vs. Thurs and not on same day as Unity Fest)
 - Time more aligned with class schedules
- Expansion of site plan (expand to North Lawn or cross over library-LSU walkway entirely?) – need a better way to group vendors since we're outgrowing the old space.
- Farmer's Market was popular but complicated logistics- hopefully ironed out after Fall
- Other?

NOTES

- Earth Day Suggestions:
 - Avoid expansion to North Lawn for the next couple years, construction activities are planned for this area.
 - No need for separate e-waste vendor if we have resources on campus we can just bring out receptacles for the day-of.
 - Try to keep the event as close to the actual Earth Day as possible.
- Better integration of sustainability into campus culture:
 - Try to present at upcoming student orientations or otherwise provide content so incoming students know there's an Office of Sustainability
 - If trying to reach out to staff/faculty, each College meets one to two times a month- contact the Dean to get on the agenda for these meetings. May be good to do a circuit of meet-and-greets to all the Colleges next academic year.
- Monthly Committee meetings to resume again in the fall semester. Thanks for a great year everyone!