



SCHOOL OF ARCHITECTURE

Kenneth Schwartz, FAIA
Favrot Professor of Architecture and Dean

May 20, 2015

To Whom It May Concern:

Founded after Hurricane Katrina, the Tulane City Center provides design and planning services to local non-profits and community-based organizations, with the goal of restoring healthy, vibrant neighborhoods. Students in the Tulane School of Architecture, working with Tulane City Center staff, provide the design and planning services, learning to engage diverse perspectives and gaining expertise in public-interest design. The Tulane City Center is an innovative university program in public engagement and sustainability education.

The Tulane City Center has made a major impact on New Orleans communities, with over 80 projects in the region. The attached list of current projects demonstrates the high caliber work done by the Tulane City Center. In this list you will find:

- Projects that boost the existing efforts of local community organizations.
- Projects that celebrate the unique history and culture of New Orleans, with a number of projects driven by recognition of African American history and artistic achievement.
- Projects that pilot and introduce sustainable planning, design and construction processes to neighborhoods across New Orleans.

As a university sustainability program, the Tulane City Center is exceptional in its collaborative, community-driven approach, and in the scale of its impact in New Orleans neighborhoods.

Sincerely,

A handwritten signature in black ink, appearing to read "KSchwartz".

Kenneth Schwartz, FAIA
Favrot Professor and Dean



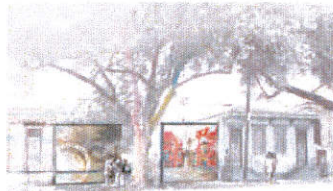
tulane city center



L9 Environmental Research + Learning Center

In an effort to establish long-term sustainability, resilience and vitality for the residents of the Lower Ninth Ward, the Center for Sustainable Engagement and Development (CSED) has teamed up with the Tulane City Center and the LSU School of Landscape Architecture to propose the L9 Environmental Learning and Research Center. The team developed a design for the Center and a phasing strategy for developing the ambitious plan over time.

The Spring 2015 TCC design/build studio is realizing phase 2 of the project, to include an outdoor classroom, and a series garden rooms demonstrating sustainable landscape strategies for stormwater management. A USGBC environmental classroom will be installed on the site - made possible by a collaboration with EDR and USGBC.



Mardi Gras Indian Council Campus on the Lasalle Cultural Corridor

The Mardi Gras Indian Council partnered with Tulane City Center to advance their presence in Central City. Through a neighborhood analysis, a proposal for a cultural campus was developed and sites on the Lasalle corridor identified to be adapted for this use. A design team developed this vision with input from Tulane architecture students, Louisiana State University landscape architecture students, and recent graduates of the Tulane Master of Sustainable Real Estate Development program. Through the process, the Mardi Gras Indian Council participated in capacity building workshops and cultural archiving, to develop the organizational capacity to manage a cultural campus and the cultural artifacts to enliven it. In partnership with the Foundation for Louisiana, the Council closed on a property in March 2015 and is currently a finalist for a national ArtPlace grant that would support further steps toward realizing their vision.



Dew Drop Inn

The Dew Drop Inn once had a rich and vibrant life that was rooted in civil rights and music but years of change and uncontrollable circumstances had forced the Dew Drop Inn to close its doors not long ago. It is our hope to revitalize this former neighborhood institution and current landmark in order to give it a new life, one that lives up to its former glory. It is our mission to "reactivate the site by reintroducing and reinterpreting the uses that are rooted in history, while introducing new programs for both music and youth." Tulane City Center worked with the owner and the Milne Inspiration Center to develop a vision for the Dew Drop's future drawn from its vibrant past. In addition to this visioning booklet, TCC designed and built a facade installation that marks the beginning of Dew Drop's rebirth. In conjunction with Harmony Neighborhood Development, the Inn served as the center of a Better Block event demonstrating a vision for the Lasalle Cultural Corridor.



Hollygrove Greenline

The Hollygrove Greenline is an initiative to convert the vacant diagonal lots of a former rail line cutting through the Hollygrove neighborhood into a public amenity. The Tulane City Center along with the Carrollton-Hollygrove CDC has been working with the New Orleans Sewerage and Water Board to realize the project which includes water management demonstration projects. Following the first phase's construction, TCC worked with NORA to construct a raingarden on an adjacent lot, and is currently developing a design to develop another nearby lot as a parklet. The Greenline was recently awarded a grant from the Sewerage and Water Board for Phase 2 construction that will support an educational pavilion to host school groups and neighborhood gatherings.



Hung Dao

Tulane City Center has partnered with Elizabeth Mossop of the LSU Landscape Lab and the Hung Dao CDC, a Vietnamese community group, to redevelop a six acre site at 4300 Sullen Place in lower Algiers. A formerly blighted apartment complex was razed to make way for the proposed project. The new master plan proposes interventions to correct site drainage problems while developing sports fields, a community center, a basketball structure that will also house community festivals, planting beds to support an already strong tradition of community agriculture, and a Vietnamese heritage garden with plants native to different regions of Vietnam. TCC's work was supported by an \$8,000 grant from City Council/Harrah's. The team completed a vision booklet and the CDC is currently fundraising toward realizing phases of the plan.





tulane city center



Facade Renew

TCC partnered with the New Orleans Redevelopment Authority (NORA) in January 2014 to launch the Façade RENEW Program, a grant program designed to incentivize commercial property and small business owners to revitalize storefronts and building façades in four targeted areas of the city. Façade RENEW is designed to spur redevelopment along portions of three historic commercial corridors in New Orleans: Bayou Road, Oretha Castle Haley Boulevard, and St. Claude Avenue. Clio Associates LLC is working directly with the Tulane City Center to provide 30 hours of technical design assistance for each of the grant applicants. Other program partners include the Main Street organizations that support each of the corridors. This 2-year pilot program has exceeded its goal of facilitating 17 grants across the three corridors, and represents an investment of \$1M toward revitalizing these commercial corridors.



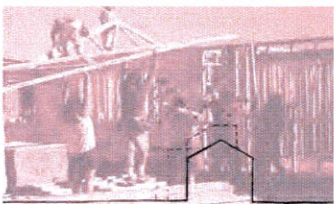
St. Claude Art Park

In support of its burgeoning arts and cultural community, St. Claude Main Street (SCMS) applied for and received a major grant from ArtPlace, a national foundation whose mission is to support "creative place making" initiatives that increase community vibrancy. The Tulane City Center gathered community input about the desired uses and ideas for the space over the spring and summer of 2013. The team then used that community input to design a pocket park at the corner of St. Claude and Independence that will double as a space for the monthly SCMS night market. The park includes spaces for relaxing, gathering, gardening, and playing horseshoes and defines these through a series of low decks and earthen mounds. The park also includes infrastructure for the night market and is flexible enough to accommodate other activities.



Parisite Skatepark

Parisite began as a Do-It-Yourself skatepark. TCC worked with Transitional Spcae to develop their organizational capacity and through this work, they successfully negotiated to have the skatepark officially recognized by the city of New Orleans as the city's first official Skatepark Recreation Area. TCC students designed and constructed a formal entryway, seating, viewing platform, along with storm water retention infrastructure and plantings at the skatepark site. Our Americorps VISTA organized over 300 volunteers (over 1,000 volunteer hours) on site through the course of the fall semester – making this the first TCC project to substantially involve volunteers in our outreach efforts. The park officially opened on February 28th. Transitional Spaces continues to advocate for the park and is pursuing opportunities to expand the ramps and courses through the approval process we pioneered.



Project Home by Hand

Project Home Again is a nonprofit, housing development organization created by the Leonard and Louise Riggio Foundation shortly after Hurricane Katrina to build high-quality, energy-efficient homes for low and moderate-income New Orleanians. Tulane City Center engaged two architecture professors and a team of architecture and preservation students to develop schematic designs for 4 prototype houses as contemporary takes on New Orleans typologies. The organization is in the process of obtaining site control on 4-6 properties.



1725 Baronne Street-New TCC Headquarters

Tulane City Center teamed up with developer Gulf Coast Housing Partnership to construct our new permanent facility on Baronne Street in Central City. This 7,000 s.f. location houses studios and seminar courses, community events and a fully outfitted shop for fabrication and staging of community design build projects. Most importantly, this new location helps bring TCC geographically closer to our project sites and partners as we seek to strengthen our existing relationships and forge new relationships with community members, non-profit organizations and government agencies. The fall 2014 design build studio was focused on interior build outs to further customize the facility to support TCC's collaborative programs.

