

EXCLUSIVELY OFFERED FOR SALE BY



2008 BOMBARDIER GLOBAL XRS

MSN 9254 - VQ-BGS



The **Global Express XRS** is an extension of the prior **Global Express** and bears all of the qualities of its ultra-long-range older sibling, but with greater range and a modified design.

MSN 9254 provides all of the necessary amenities for intercontinental trips with the capability to seat up to **14 passengers**. It is an exceptional combination of comfort and performance.





HIGHLIGHTS

- On Programs Smart Parts, RRCC & MSP
- 2020 Mandate Compliant
- ADS-B Out V2 (DO-260B) Compliant
- High Speed Data - KA Band
- Batch 3 Compliant
- Partial Cabin Refurbishment in 2015
(Wood work & New Forward Toilet Countertop)
- 14 Passengers Configuration
- “Pininfarina Edition” Interior
- JAR-OPS 1
- Recent 120-Month Inspection

Airframe

On Bombardier Smart Parts

- 2,129 TSN - 783 CSN (As of August 2019)

Engines

Rolls Royce BR700-710A2-20 - On Rolls Royce Corporate Care

- Engine #1: s/n 12617 - 2,129 TSN - 783 CSN
- Engine #2: s/n 12618 - 2,129 TSN - 783 CSN

APU

Honeywell RE220(GX) - On Honeywell MSP

- s/n : P-378 - 2,265 TSN - 1,946 CSN



NO SMOKING

FLAP



• **Avionics**

• EFIS	Honeywell Primus 2000XP - 6 tubes
• VHF	Triple Primus II Nav/Com w/ 25kHz / 8.33 kHz spacing
• FLT DIR.	Primus-2000XP IFCS w/triple IC-800
• AUTOPILOT	Triple IC-800
• FMS	Triple FNZ-2000
• GPS	Dual Honeywell FMZ-2000
• SATCOM	Single SAT-6000
• HF COM	Dual HF-9031A
• SELCAL	Single CSD-714
• IRS	Triple Laseref IV
• Lighting Prot.	Single LP-860
• RADALT	Dual ALT-4000
• RADAR	Single Primus 800
• TCAS	Single TCAS 2000 - Version 7.1
• EGPWS	Single Honeywell
• SSFDR	Single Honeywell 980-4700-041
• SSCVR	Single Honeywell 980-6022-001
• Data Loader	Single DL-800
• MADC	Triple AZ-840
• ELT	Single Artex ELT 110-406



Communication

- SATCOM - SAT-6000
- KA Band Bombardier SB inclusive WIFI System (CNX Router)
- HST-2100 Dual Ch. High Speed Data System
- USB plugs installed throughout the cabin
- PBX Aerocom 3000B
- Four passengers cabin handsets
- Global office - LAN with connection for laptops - WLAN
- Plain paper, fax/printer/scanner



Entertainment

Rockwell/Collins Cabin Electronic System

- Touch sensitive passenger control panels
- Wireless hand-held passenger control units
- High quality cabin speaker/subwoofer
- Passenger headphone system
- Three CD/DVD players combined units
- Two bulkheads mounted 21.3" LCD in cabin
- High quality cabin speakers
- One 10.4" LCD touch-screen monitor in the galley
- Nine receptacles monitor at each of the six single chairs
- Two receptacles located in the side ledge of the conference area
- Three plug-in 10.4" touch screen LCD monitors
- Airshow ASXi interactive with moving map.





Other Equipment

- Additional Refuel/Defuel Control Panel
- 3500 VA Power Converter w/ 230VAC
- Stick Pusher Cancel Function (JAR-OPS)
- External Baggage Door Lock Override
- Catwalk Battery Access
- Aft Equip Bay Storage Box
- Tow bar Assy and Storage Provisions
- Common Keyed Locks
- Wing tip taxi lights
- Pulse landing light
- Exterior pylon lights
- Logo lights

Environmental Control System

- External Service Panel Lighting
- Two vacuum toilets (Fwd / Aft)





INTERIOR HIGHLIGHTS

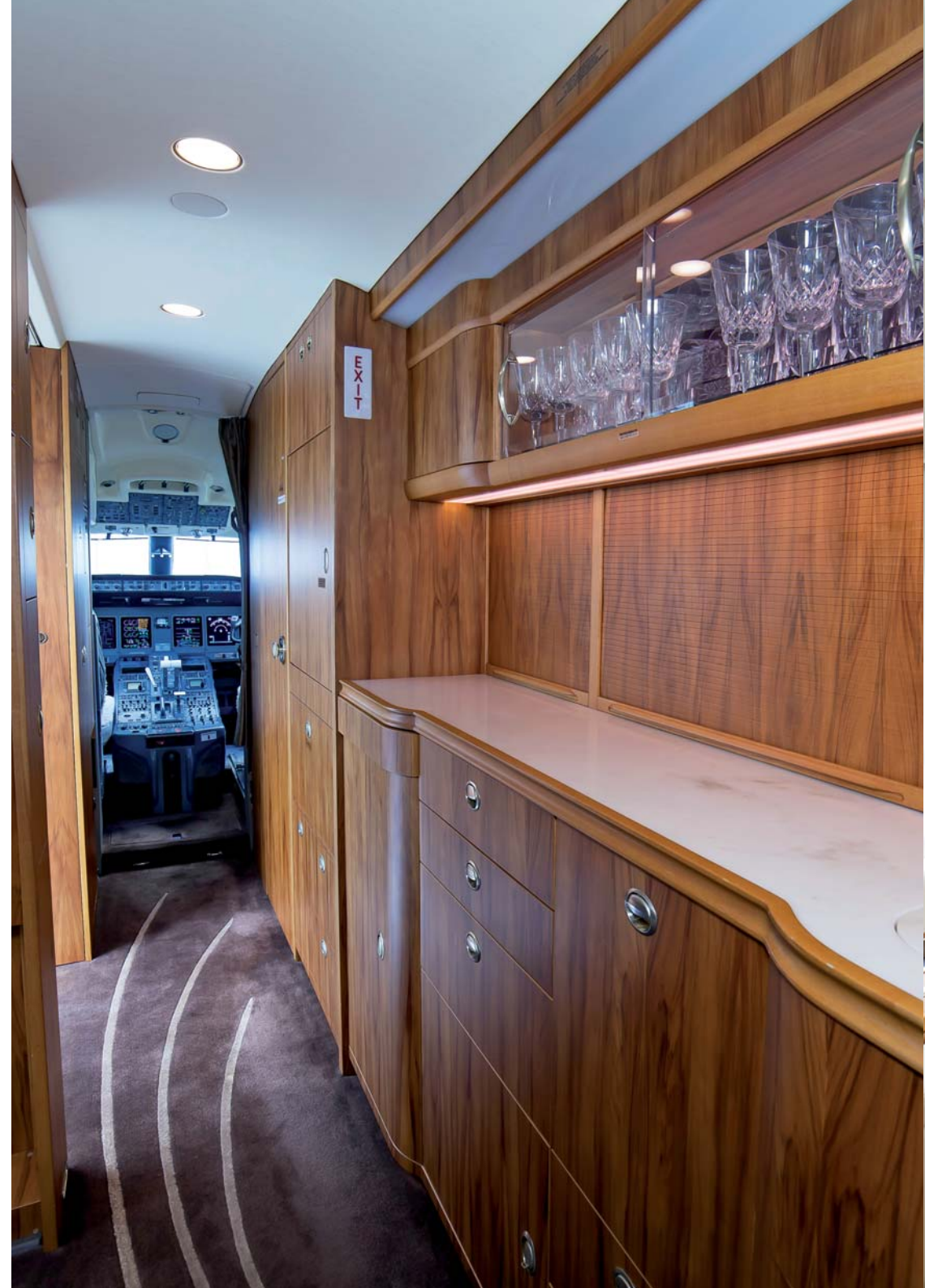
- “Pininfarina Edition” Interior
- 14 passengers - 3 Seating Areas
- Forward Galley
- Forward Crew Rest
- Lighting: LED interior lighting





ENTRY AREA

The large and functional forward curved galley features a **TIA Wavejet Microwave Oven**, **Aerolux Nespresso coffee maker**, **TIA high temperature oven** and **air chiller unit** for food storage. **Forward crew rest and crew lavatory**.





FORWARD CABIN

Four-place club configuration with recliner style footrest, electric inflatable lumbar, swivel capable berthable executive chairs.



MID CABIN

Single seat executive workstation opposite to a four-place conference group with hi-low conference table. Conference group seats feature recline, track & swivel on the inboard chairs, and electric inflatable lumbar.







2008 BOMBARDIER GLOBAL XRS - MSN 9254

AFT CABIN

Aft 16G three-place berthable divan with two end cabinets opposite to dual berthable executive chairs (including recliner style footrests, electric inflatable lumbar and swivel capabilities).







MAINTENANCE & INSPECTIONS

- 750 hour / 30 month check due: 26.Oct.2020
- 1000 hour check due: 3116 TAH (986 Hrs to go)
- 1500 hour check due: 3000 TAH (870 Hrs to go)
- 450 LDG Check due: 1223 TAC (440 Ldg to go)
- 15-month check due: Performed in July 2019
- 30-month check due: 28.Oct.2020
- 60-month check due: 28.Apr.2023
- 120-month check due: 28.Apr.2028
- 180-month Inspection: due 28.Apr.2023 iaw MPD but partially complied with during the 120-month inspection in 2018 (heavy access tasks)
- 240-month (16C & 8C) Inspection: due 29-April-2028
- IAW CAMP Computerized Maintenance Tracking

NOTE

- Additional Corrosion protection applied iaw BBD SB's and IS Modsum
- CPDLC - FANS 1/A+ Compliant
- ADS-B Out V2 (DO-260B) Compliant
- BATCH 3.0
- HUD
- EVS

- Cabin wood work refurbishment carried out at RUAG August 2015 and new FWD toilet countertop installed by AMAC Aerospace.

EXTERIOR

Overall White with Beige & Grey stripes along the body.





2008 BOMBARDIER GLOBAL XRS

MSN 9254 - VQ-BGS

Specifications and/or descriptions are provided as introductory information. They do not constitute representations or warranties. Accordingly, you should rely on your own inspection of the aircraft.

Aircraft subject to prior sale, lease, or withdrawal from the market without notice.



By Appointment to H.S.H. the Sovereign Prince of Monaco

Follow us on

