



Fungarium Imaginarium

A wandering into Fungal wisdom

Ada Retegan

Idea Generantis



Typical Habitat:

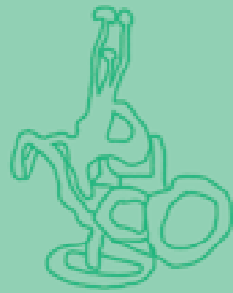
Growing in lush, verdant meadows, they tend to be loners. Finding themselves on the ground, they feed on decaying organic matter, which might be where they get their intelligence from. They're simple to recognize and commonly found even during winter.

Abilities:

As suggested by their name, these colourful puffs will forage for thoughts in the most hidden corners of your mind and bring to light ideas that you've never thought yourself capable of conceiving. All you need to do is to pick them up. Used in creative processes and decision making, Idea Generantis is the best friend you've always wanted to have, as they will help you discover who you truly are. Are you willing to let them search through your imagination?



Intelligente Omnia



Typical Habitat:

This mushroom's favorable home is the marshland, living in very specific conditions between aquatic and terrestrial ecosystems. Fortunately, their natural habitats are increasing, hence they're becoming even more abundant than they once were.

Abilities:

It has been a forever wish of humans to be able to communicate with, and understand other species, and these mushrooms evolved to do exactly that. When two beings find themselves touching their intertwined structure, they speak the same language, as if there was never a barrier to begin with. Insects, plants, birds, humans or reptiles, you name it, they can all share knowledge for a better coexistence.



Genesis Aquaris



Typical Habitat:

They tend to prefer the deep seamounts, which provide the perfect surface to cling to. Unlike terrestrial Fungi, they are not settled in one place thanks to their bodies that allow them to swim. They befriend marine mammals and they are often spotted around corals.

Abilities:

It is truly fascinating how these Fungi not only adapted to the high salinity of marine waters, but they have also mastered living under the great pressures of deep oceans. Even more fascinating is the fact that humans can benefit from their abilities, and they are what you need for your underwater adventures. Often, they are used by scientists that explore other aquatic species, but they're also engaged in leisure activities. You'll survive similarly to a marine animal for as long as you have them around you.



Modus Mutante



Typical Habitat:

Established in the canopy trees of tropical rainforests, they reach great heights, which makes them difficult to obtain by the average human, meaning they are very treasured. They also play an important role in regulating the climate through the relationship they have with these trees they inhabit.

Abilities:

A very treasured Fungi among mycophiles, Modus Mutante might be exactly what you need on your bad days. The most effective and peculiar communication occurs when they connect their mycelium to the hair growing on your head, but they work in various ways. Once they detect a bad mood or an intrusive thought, they change their colour, which indicates that they are doing their job. But be careful, they thrive on this negativity so do not be fooled to feed them regularly.



Fortuna Magnificata

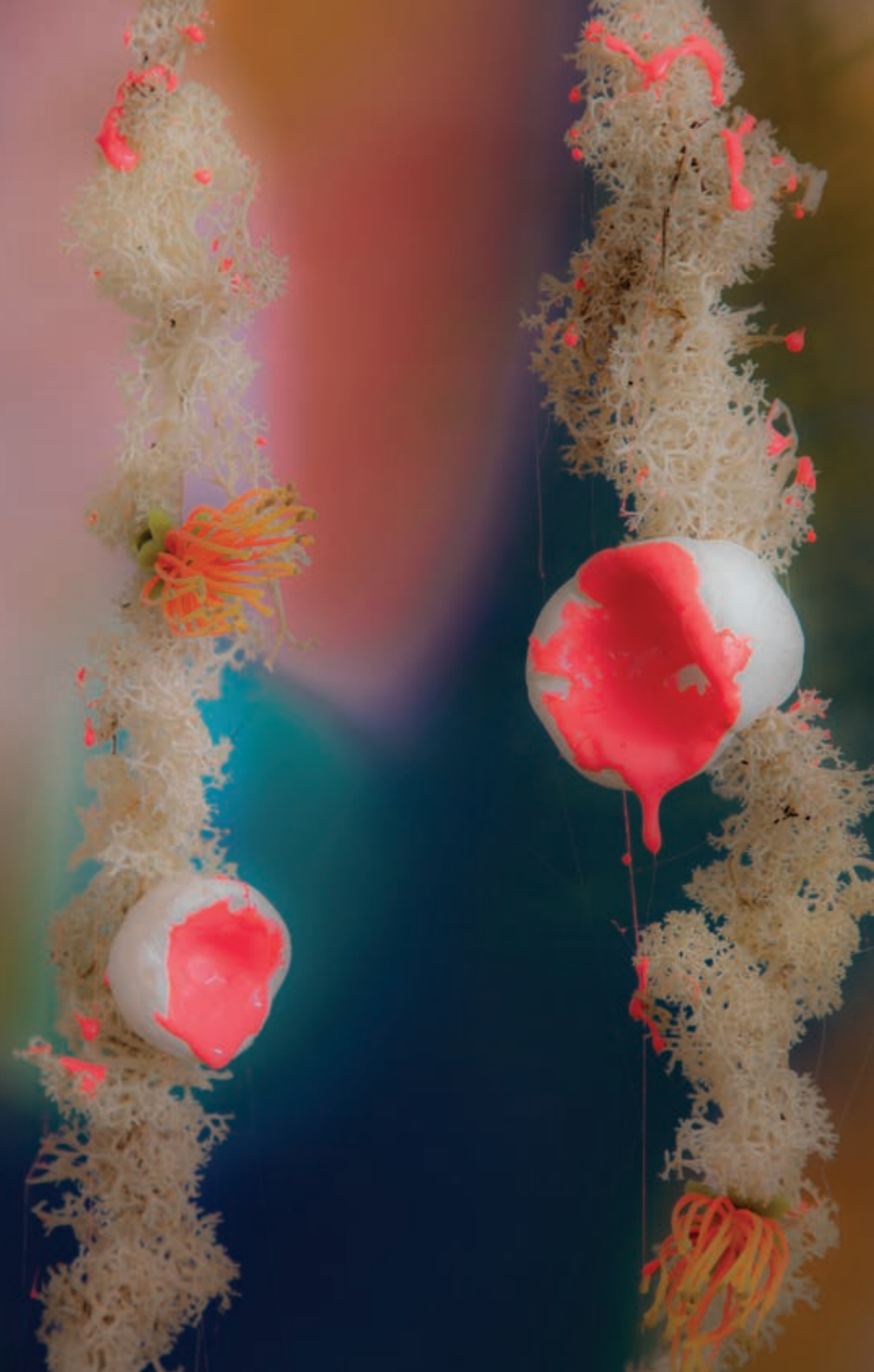


Typical Habitat:

Found in juniper moorlands and limestone grasslands, they grow on interwoven branches of lichens. However, more recently, they have been reported in various locations, which suggests high adaptability. With this unforeseen spore distribution, it might become difficult to track the movement of this strain, and who knows, they might surprise visit you one day.

Abilities:

This specimen is precarious to come across. Their body secretes a gooey, slimey, colorful substance, called Liquida Fortuna, which has a very distinctive ambrosial scent that is hard to resist. It is said to amplify an individual's potential, changing their course of life. Only dare to drink their juice if you fully believe in your virtue, otherwise consume at your own risk and endure the consequences.



Omnium Villa



Typical Habitat:

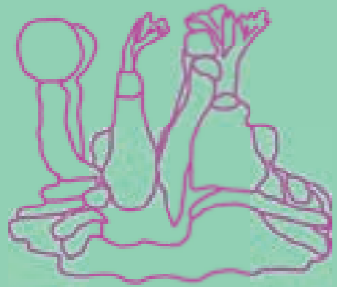
They have been spotted in polar, snow-capped highland regions. Omnium Villa manages to grow in inhospitable conditions, covered by slime molds. On top of their hilly structure there is a “light pole” that makes them visible from afar.

Abilities:

Probably one of the most rare Fungi, they appear to those who find themselves in impossibly cold states. Few travelers were lucky enough to encounter them when in desperate need of shelter, but some have lived to tell their stories thanks to them. They are said to be big enough to accommodate a small number of beings at once, for which they provide both a safe haven and food, being a great example of conviviality towards other species.



Figura Alterer



Typical Habitat:

Commonly found in tropical zones, they flourish during dry season. Despite their colorful appearance, they grow in shadowed places, and if you're lucky enough you will find them inside tree crevices.

Abilities:

Figura Alterer are sought for their shape-shifting brilliance, and those who come across them are usually chosen ones. It is rather recently that humans discovered how to use their powers for themselves and they began remodelling certain aspects of their appearance with the use of these mushrooms. It is very tricky to find this one, as they often change their form, but they teach you to question who and what you trust.



Ignari Incantatores



Typical Habitat:

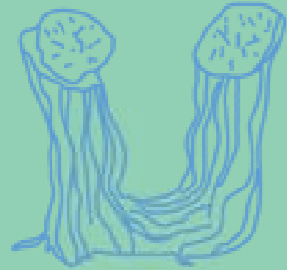
The wondrous Ignari Incantatores are a powerful find. They usually grow closely to sphagnum moss and can be found in moist tundra areas or secluded moorlands, thriving in sour soils. Because of their dangerous potential, their locations are usually kept secret.

Abilities:

They are known to have been used as a means of control by one human over another, by generating a forceful spell when given an object belonging to the target. Once they consume the object that they are given, using their pavilion shaped head, they spawn mellow sounds that could either heal or destroy. It is known that they remained wired to the same person once a spell was conducted.



Anima Mate



Typical Habitat:

Very resilient Fungi that love moist soils, they generally occur along stream banks and they are highly tolerant of floods. They create life long companionships with river birch trees through symbiosis, and can be found consistently throughout the year.

Abilities:

The literal translation of Anima Mate is “Soul Mates”, which indicates their purpose straightforwardly. What is particularly interesting about these fruiting bodies is that they come in pairs of two, and they can grow hundreds of kilometers apart, connected by their hyphae. When humans forage the sibling mushrooms, they are destined to meet, though it’s impossible to tell which ones are linked, because they all look the same.



