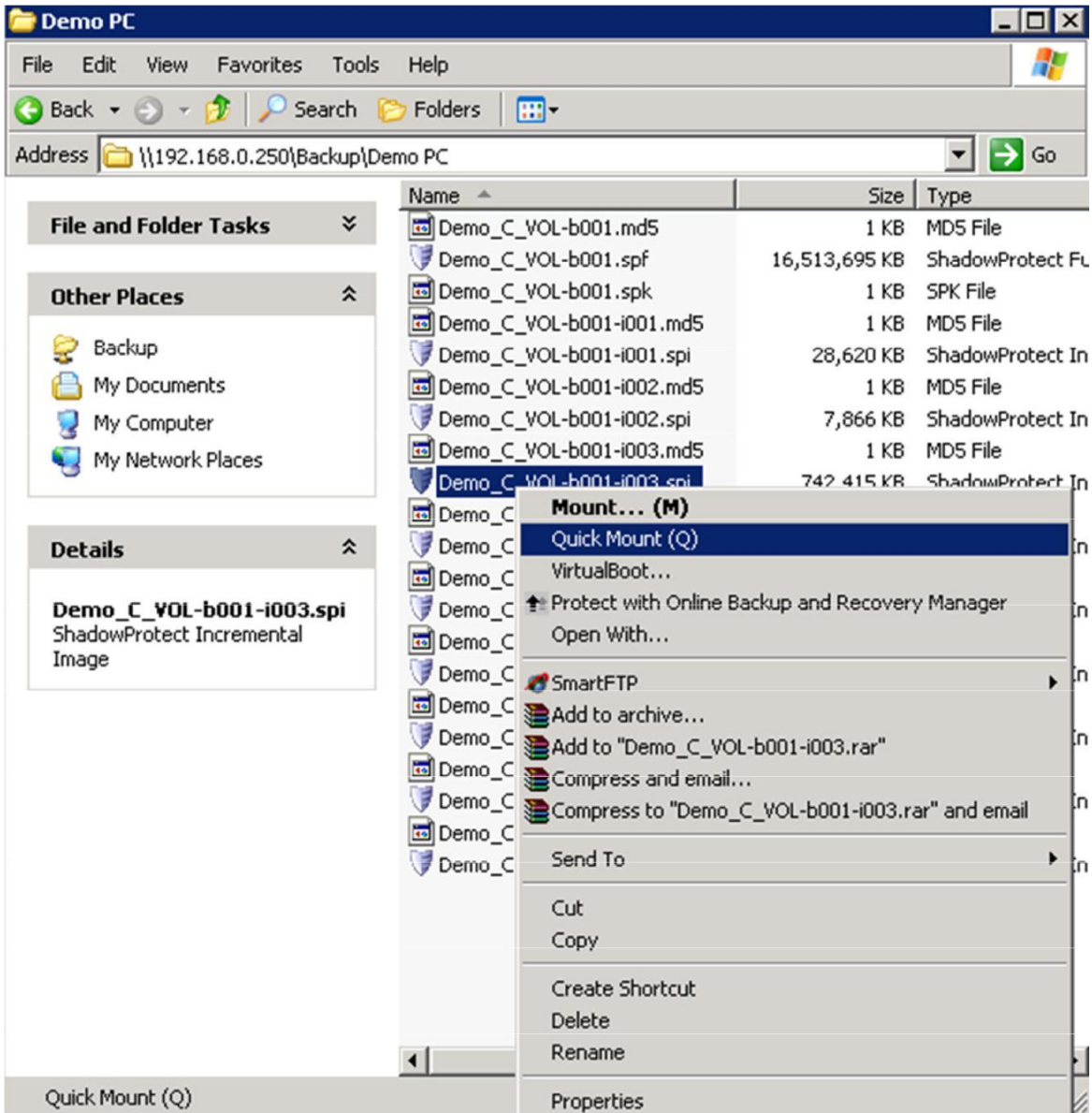


How to restore files and folders from an image backup

This document assumes you have shadow protect installed on the machine being used to restore.

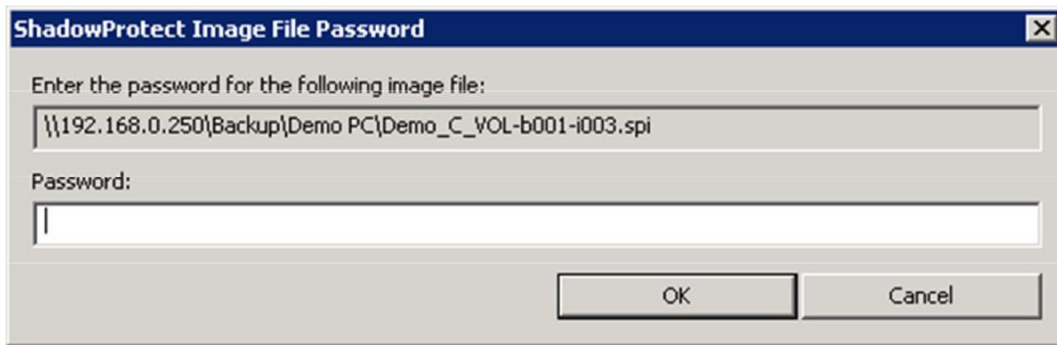
To restore files and folders from an image backup is very simple.

1. Browse to your backup image path. In this case it is \\192.168.0.250\Backup\Demo PC
2. Right click on the Shadow Protect Incremental file (spi) that you want to restore from and select “quick



mount”

3. You will next be prompted for the password you entered to encrypt the backup image. Type this in then press OK



4. Depending on the size of the image, within 10 – 20 seconds a new drive letter will appear in windows explorer. This is your mounted backup image and will contain everything the system had at the time of the backup. Simply copy and paste the data required from the mounted drive to your destination drive / folder.

5. When finished, simply right click on the mounted drive and select quick dismount.