



# CLUJ County

## Location

- In the central western part of Romania.
- The most important territorial administrative unit of Romania, in Transylvania region.

## Facts

- Area of 6,674 km<sup>2</sup>
- Population of more than 720,000

## Resources

- Valuable economic and human potential
- Developed infrastructure
- Natural resources: coal, gas, salt, mineral springs
- Historical vestiges
- Multicultural diversity
- Tourism & Agriculture



# WE ARE TETAROM

innovate  
develop  
build  
trust

## EVOLVE TOGETHER

### Transylvania Equipments and Advanced Technologies produced in ROMania

- ➔ Founded in November 2001 by Cluj County Council
- ➔ Main activity: Industrial Park administration
- ➔ Administrates:
  - 3 built up industrial parks in total surface of 1,98 million square meters (land plots, office space, production space)
  - one under construction of 850,000 square meters.





# **OUR MAIN GOALS**

-  **To create optimal conditions and support services for the development of Cluj business environment**
-  **To support clients in developing high tech research activity.**
-  **To sustain non-polluting technologies and industries.**
-  **To create new jobs in order to absorb skilled and unskilled work force**
-  **To set up specific industrial park infrastructures, at the highest standards, in order to support local and regional economic development.**

# TETAROM Industrial Parks

## → Cluj-Napoca

### TETAROM I

320,000 m<sup>2</sup>

### TETAROM II

120,000 m<sup>2</sup>

## → Jucu Village, Cluj County

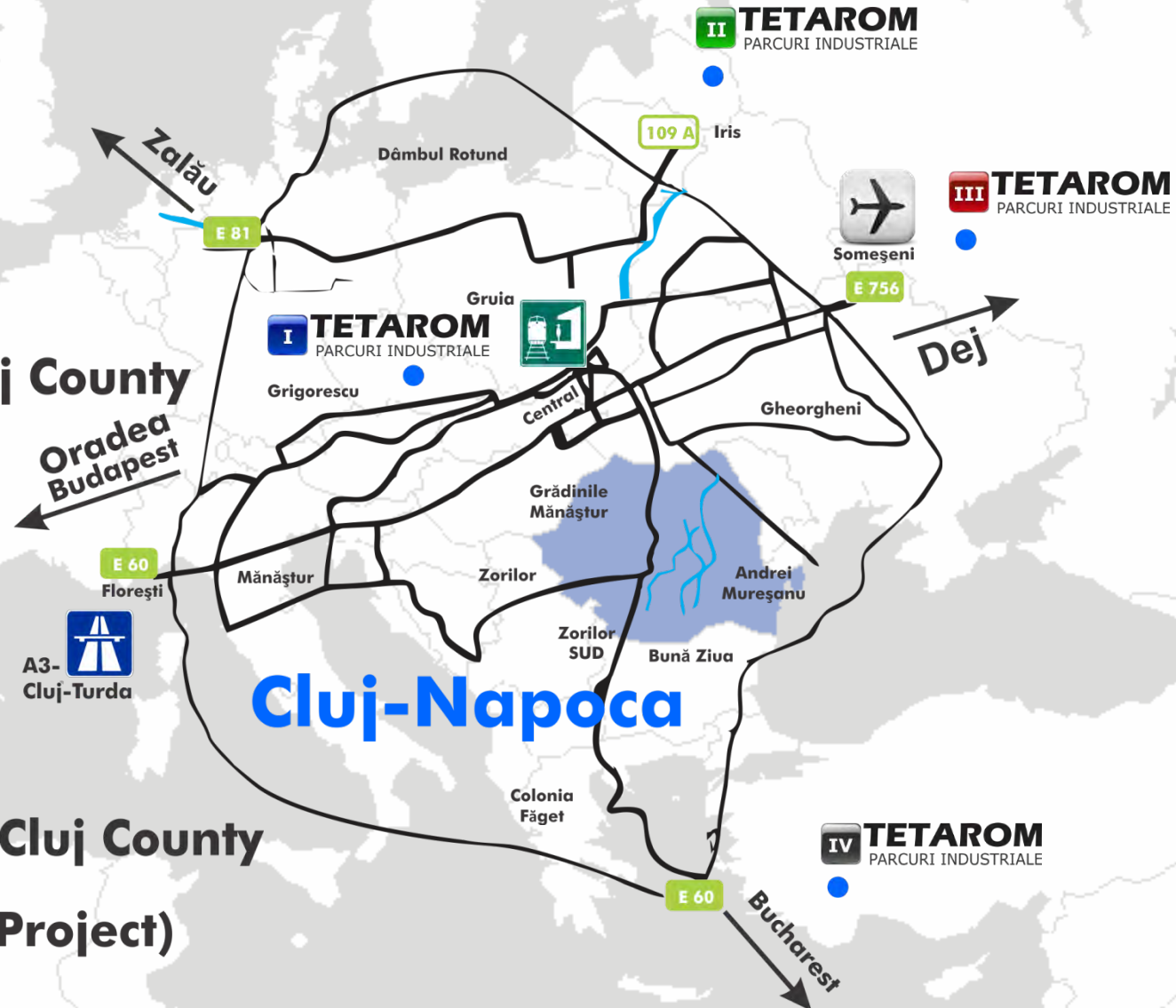
### TETAROM III

1,540,000 m<sup>2</sup>

## → Feleacu Village, Cluj County

### TETAROM IV - (Project)

850,000 m<sup>2</sup>



**WE** **EVOLVE** **TOGETHER** **TETAROM**  
innovate develop build trust  
ARE

# TETAROM

INDUSTRIAL PARKS

# OUR OFFER

- ➔ **Office space rental**
- ➔ **Production space**
- ➔ **Land plots cession**
- ➔ **Infrastructure facilities**
  - water
  - electricity
  - gas
  - sewage
  - telecommunications

innovate  
develop  
build  
trust

**WE**

**EVOLVE  
TOGETHER**

**ARE TETAROM**

**TETAROM**  
INDUSTRIAL PARKS

# OUR OFFER



## **General use services**

multifunctional spaces  
conference room  
parking & annex spaces  
security  
cleaning & maintenance



## **Development support services**

innovation & technological transfer  
contact with local public authorities  
banking  
investment counseling  
financial, technical and legal assistance



## Why choose Cluj, why choose TETAROM Industrial Parks?

### CLUJ - NAPOCA

- ✓ Prestigious university center (11 universities; over 100,000 students).
- ✓ Developed education: international school, vocational schools
- ✓ Available labor, skilled and unskilled
- ✓ For foreign investors, Cluj is a “best cost” location.
- ✓ Access to European destinations via Cluj-Napoca International Airport
- ✓ Well-developed infrastructure and modern communications networks
- ✓ Important economic resources and sound dynamic in economic and social development
- ✓ Important cultural and traditional heritage
- ✓ Favorable geographical location

### TETAROM INDUSTRIAL PARKS

- ✓ Top companies in all three industrial parks.
- ✓ Full support in the investment implementation process.
- ✓ Contact with local authorities for obtaining all necessary permits and documentation
- ✓ Dedicated team of professionals working to see investments completed and clients satisfied.
- ✓ Licenses in supply and distribution of electricity and in natural gas distribution



## Why choose Cluj, why choose TETAROM Industrial Parks?

### Business Incentives

**1. State aid Scheme** - available for companies located in industrial parks  
Government Ordinance No. 2980/20139 (former GD No.1680/2008)

### Companies which applied and were granted state aid in Tetarom Industrial Parks

Bosch SRL ~ 25,5 mil. Euro

De'Longhi SRL ~ 12 mil. Euro

Emerson SRL ~ 1,6 mil. Euro

### 2. Minimis Scheme

HG 1164/2007

### 3. Industrial Parks Law

Law186/2013

### 2. Local tax exemption (relief)

Cluj Local Council Decision No. 550/11.12.2013)

**Companies operating in industrial parks will pay the lowest tax possible in the current conditions of the Law: (0.25%)**





**TETAROM**  
INDUSTRIAL PARKS

**WE**

innovate  
develop  
build  
trust  
ARE

**EVOLVE  
TOGETHER**  
**TETAROM**



### **Access ways: (distance from Tetarom I)**

Road E 60 – Bucharest – Budapest - Vienna - 3.7 km

Highway A3 (Bucharest - Cluj-Napoca - Oradea) - 13.6 km

International Airport of Cluj-Napoca: 11 km



### **Area:**

320.000 m<sup>2</sup>

35 plots: 1.100m<sup>2</sup> – 48,000 m<sup>2</sup>

Multifunctional Hall: 4,900 m<sup>2</sup>

Business incubator: 1,786 m<sup>2</sup>

715 m<sup>2</sup> – incubation area

378 m<sup>2</sup> – multifunctional space



**Investments: > 150 mil  
Euro**



**Newly created jobs:  
> 3000**



**Clients: > 100**



**Status: 100% occupied**



**TETAROM**  
INDUSTRIAL PARKS

**WE**

innovate  
develop  
build  
trust

**EVOLVE  
TOGETHER**

**ARE TETAROM**



## **Access ways: (distance from Tetarom II)**

Road E 60 – Bucharest – Budapest - Vienna - 11.7 km

Highway A3 (Bucharest - Cluj-Napoca - Oradea) - 21.6 km

International Airport of Cluj-Napoca: 4.6 km



**Area: 120.000 sqm**



**Investments: > 125 mil Euro**



**Newly created jobs: > 2,700**



**Clients: EMERSON SRL**



**Status:**

**100% occupied**



**TETAROM**  
INDUSTRIAL PARKS

**WE**

innovate  
develop  
build  
trust  
ARE

**EVOLVE  
TOGETHER  
TETAROM**

**→ Access ways: (distance from Tetarom III)**

Road E 60 – Bucharest – Budapest - Vienna - 27 km

Highway A3 (Bucharest - Cluj-Napoca - Oradea) – 37.2 km

International Airport of Cluj-Napoca: 15 km

**→ Area: 1,540.000 sqm**

**→ Investments: > 500 mil Euro**

**→ Newly created jobs: > 7000**

**→ Status  
100% occupied**

**→ Major Clients:**

- De'Longhi
- Robert Bosch
- Transilvania Constructii
- Banca Transilvania
- Castolin Logistic
- Impro
- Quadroform



**TETAROM**  
PARCURI INDUSTRIALE

**WE**

innovate  
develop  
build  
trust

**EVOLVE  
TOGETHER**  
**TETAROM**



### **Access ways: (distance from Tetarom III)**

Road E 60 – Bucharest – Budapest - Vienna -27 km

Highway A3 (Bucharest - Cluj-Napoca - Oradea) – 37.2 km

International Airport of Cluj-Napoca: 15 km



**Area: 1.512.915 sqm**



**Status**

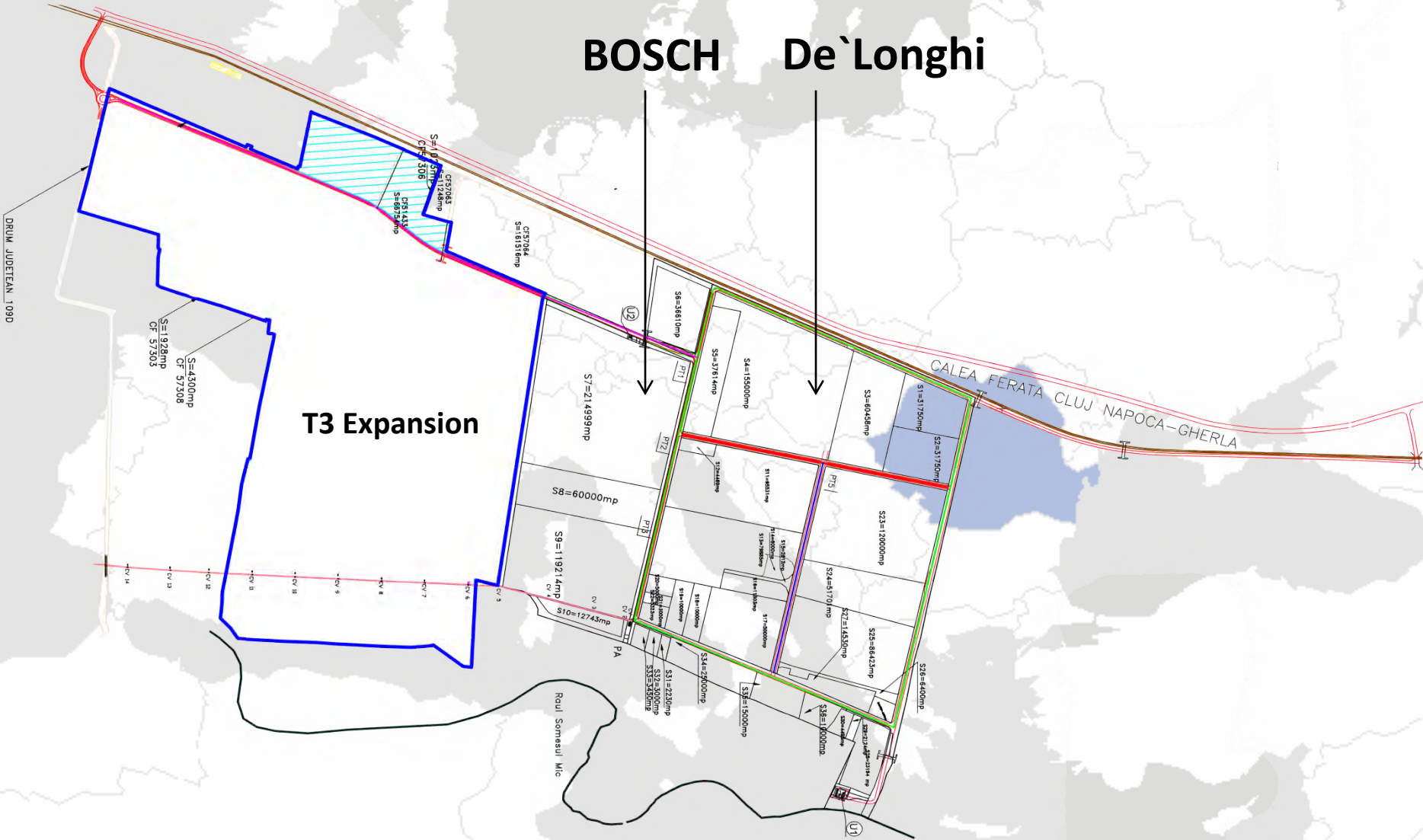
Future development



# TETAROM

PARCURI INDUSTRIALE

## BOSCH De`Longhi





**TETAROM**  
INDUSTRIAL PARKS


**WE**

innovate  
develop  
build  
trust


ARE

**EVOLVE  
TOGETHER**  
**TETAROM**

 **Project under development**

 **Area:**  
850,000 m<sup>2</sup>

 **Use:**  
Industrial  
Photovoltaic  
Logistic

 **Financed through EU Funds**

 **Project value:**  
12,064,947 Euros



## Access ways and distances

Avram Iancu Airport – 53.3 km  
Transilvania Airport Tg.Mureş - 48 km  
A3 Highway – 1km  
E60 European Road – 1km

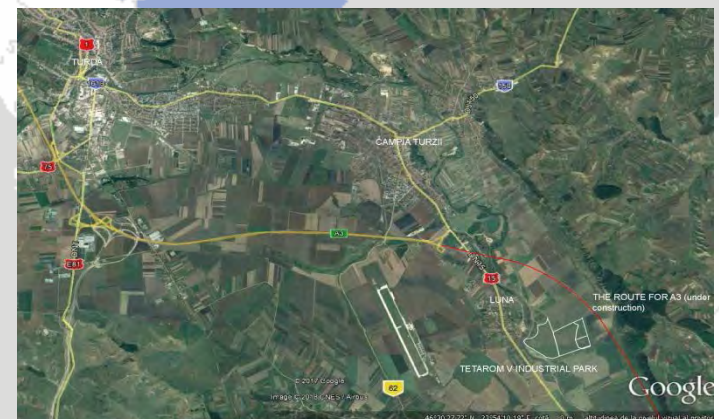


**Area: 1.210.000 sqm**



**Status**

Under development



Thank you for your time

**WE** innovate  
develop  
build  
trust  
**ARE** **TETAROM** **EVOLVE**  
**TOGETHER**