



TRAILARMOR.COM  
 839 HWY 2 CORINTH, MS 38834  
 (662) 462-4222

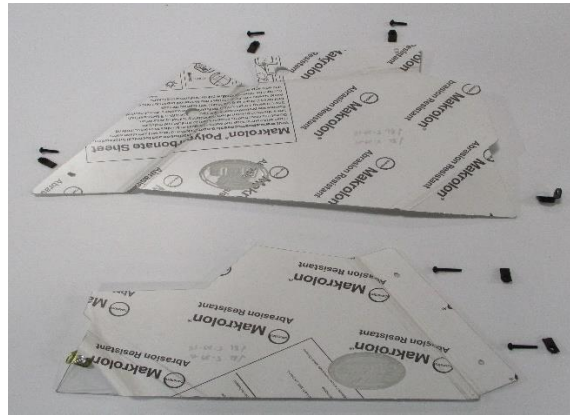
# Installation Instructions

## Trail Armor Polaris RZR RS1 Door Extensions

TA001-DOORS-RS1

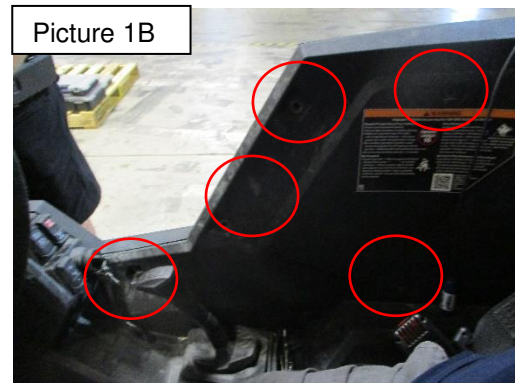
### Warnings and Product Liability Disclaimer

This product is intended to be used as a cosmetic accessory under normal equipment operation and should not be depended upon or used as a safety device. Manufacturer assumes no liability for personal injury or equipment damage as the result of use or installation of this accessory. User assumes all risk. User should carefully read all instructions prior to installation. All Trail Armor products are designed, engineered, and fit to new vehicles and their specifications. Damage, modifications, and extreme wear may cause and require modifications to the product and/or your vehicle to insure proper fitment.



### PASSENGER SIDE

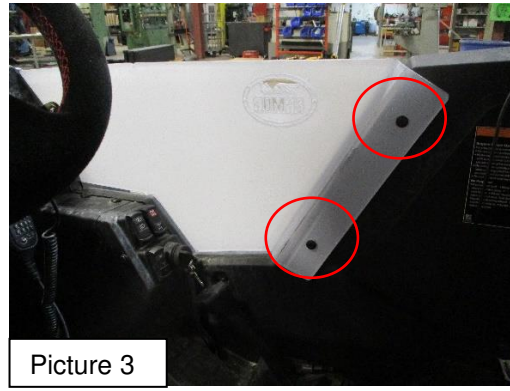
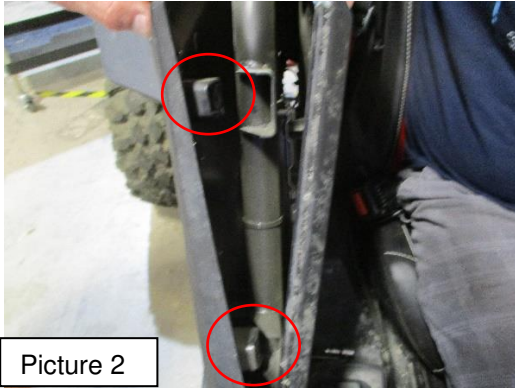
- To begin installation, remove the front factory push-pin (shown in yellow in Pic 1A) and five factory screws (shown in red in Pic 1B). Retain all fasteners as some will be reused.
- Gently pry the inner and outer factory panels apart to allow access to the factory clip nuts inside the panels. Remove clip nuts and discard. See Picture 2.
- Locate two supplied 1/4-20 u-nuts. Replace the two clip nuts previously discarded with the supplied u-nuts.



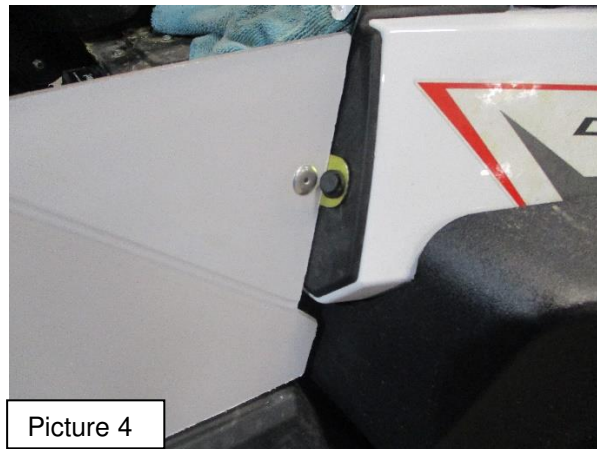


TRAILARMOR.COM  
839 HWY 2 CORINTH, MS 38834  
(662) 462-4222

# Installation Instructions



- D. Locate the Trail Armor passenger side (smaller) panel. Also, locate two supplied  $\frac{1}{4}$ -20 x 1- $\frac{1}{2}$ " Torx Truss screws. Holding the panel into position, install two 1- $\frac{1}{2}$ " Torx screws through the rear holes into the u-nuts previously installed. See Picture 3. Loosely tighten.



- E. Insert the previously removed push-pin through the metal bracket on the front outside of the panel. See Picture 4. Insert all previously removed factory fasteners. Tighten all fasteners securely but **DO NOT OVERTIGHTEN**.

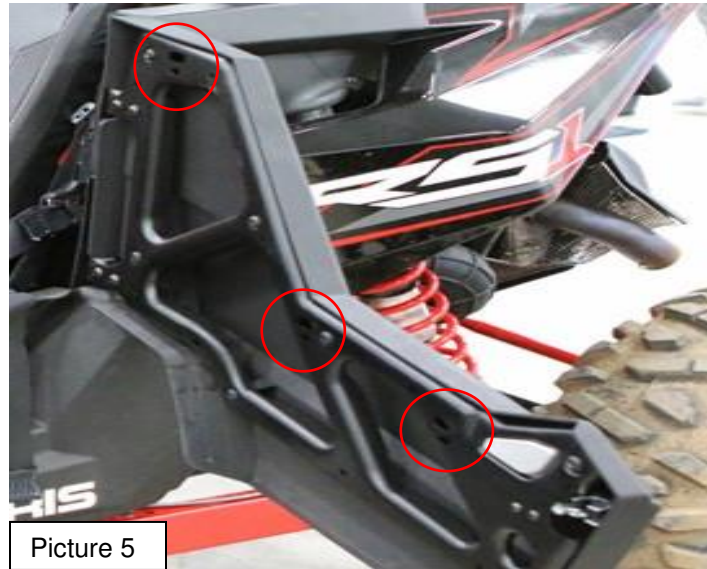
## DRIVER SIDE

- F. Locate three supplied  $\frac{1}{4}$ -20 u-nuts. Insert these into the factory holes of the door panel. Slide the u-nuts from the top towards the bottom of the door. See Picture 5.



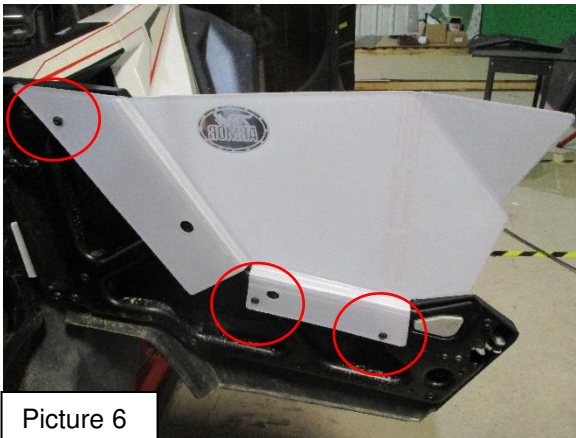
TRAILARMOR.COM  
839 HWY 2 CORINTH, MS 38834  
(662) 462-4222

# Installation Instructions

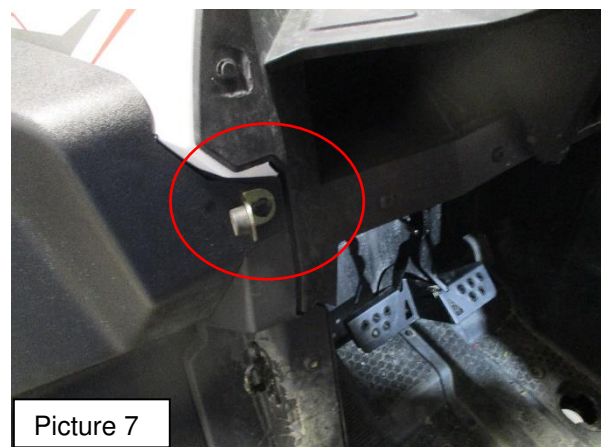


Picture 5

- G. Locate the Trail Armor driver side panel. Also, locate three ¼-20 x 1" Torx Truss screws. Holding panel into position, insert three 1" Torx Truss screws through the pre-drilled holes into the three u-nuts previously installed. Insert all fasteners before tightening. Tighten all fasteners securely, but DO NOT OVERTIGHTEN. See Picture 6.
- H. Remove the lower push-pin at the front of the vehicle just above the door striker. Locate the supplied driver side bracket assembly. Hold into position and install the previously removed factory push-pin. See Picture 7. See Pictures 8A and 8B for final installation.



Picture 6



Picture 7



TRAILARMOR.COM  
839 HWY 2 CORINTH, MS 38834  
(662) 462-4222

# Installation Instructions



Picture 8A



Picture 8B

Enjoy!! Any questions, contact Trail Armor at 662-462-4222