



TRAILARMOR.COM
839 HWY 2 CORINTH, MS 38834
(662) 233-5700

Installation Instructions

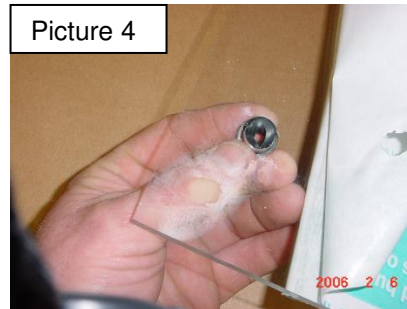
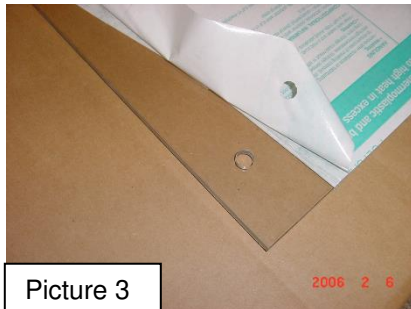
Trail Armor Polaris RZR XP TURBO S and RZR 4 XP TURBO S Rear Window Dust Shield TA010RWDS-RZR4TURBO-S

Warnings and Product Liability Disclaimer

This product is intended to be used as a cosmetic accessory under normal equipment operation and should not be depended upon or used as a safety device. Manufacturer assumes no liability for personal injury or equipment damage as the result of use or installation of this accessory. User assumes all risk. User should carefully read all instructions prior to installation. All Trail Armor products are designed, engineered, and fit to new vehicles and their specifications. Damage, modifications, and extreme wear may cause and require modifications to the product and/or your vehicle to insure proper fitment.



- A. Carefully lay upper windshield panel on flat surface; peel back the protective sheeting around the outer edges only enough to reveal the pre-drilled mounting holes. Do not peel the protective sheeting completely at this time! See Picture 3.

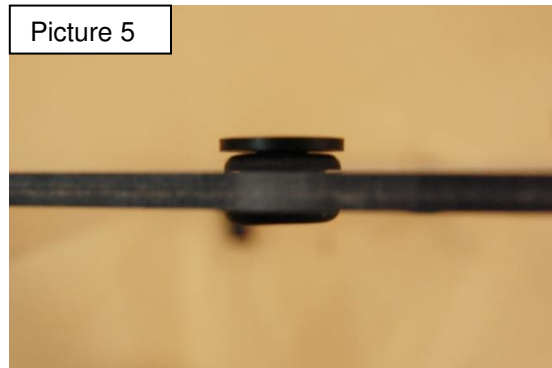
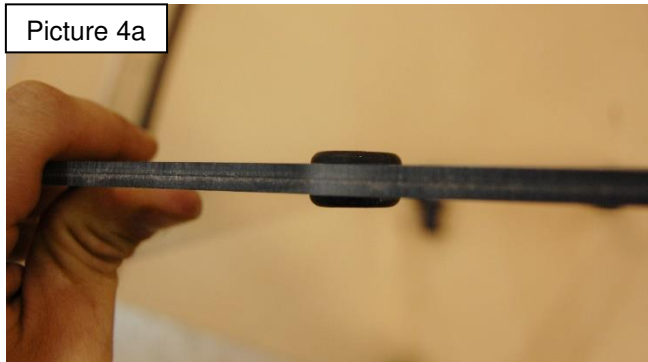




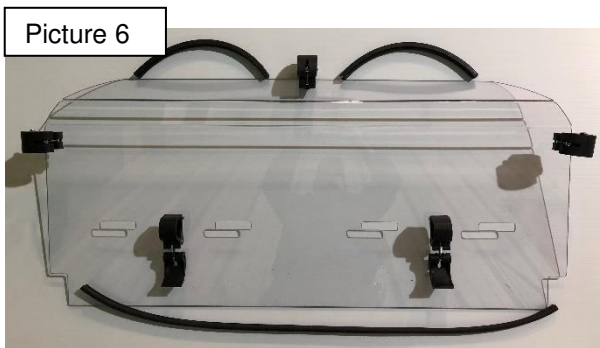
TRAILARMOR.COM
839 HWY 2 CORINTH, MS 38834
(662) 233-5700

Installation Instructions

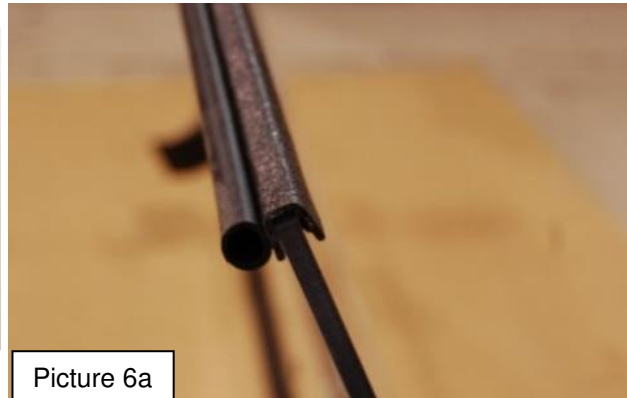
- B. Insert supplied rubber grommets into the pre-drilled holes. See Picture 4. Properly installed, the grommets' shoulder edges are uniform on both sides of the windshield. See Picture 4a.



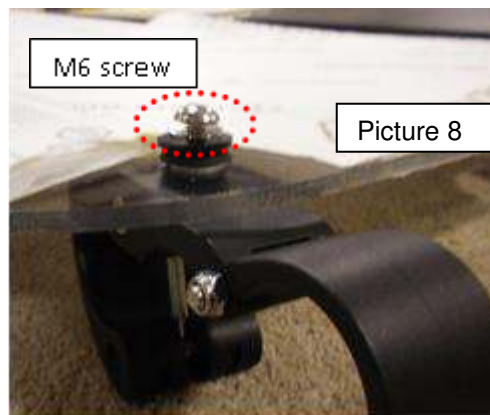
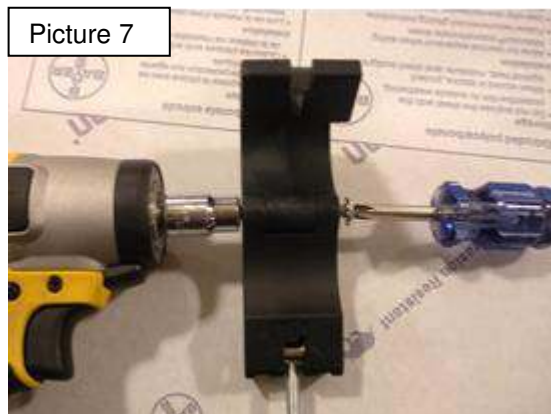
- C. Place large black plastic sleeve spacers with flanged edge towards the interior of each rubber grommet inserted in the windshield panel. See Picture 5.
- D. Locate the 43 3/4" side edge-grip bulb seal. Install this push-on edge trim gasket to the bottom edge of the panel so that the bulb is facing toward the rear of the vehicle when the upper panel is installed. Roll on by hand. See Picture 6 and 6a.



44 3/4" Side Edge-Grip



- E. Tighten hinge joints on all Trail Armor Fast Clamps enough to where the screws grab the nylock nuts but the clamps will still freely open and close. See Picture 7.

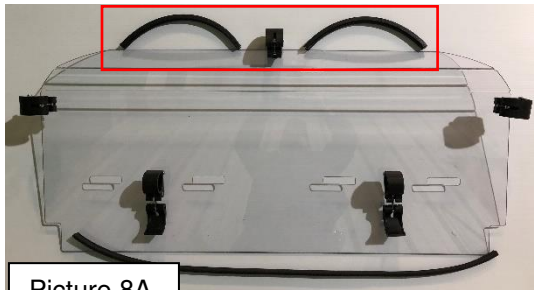




TRAILARMOR.COM
839 HWY 2 CORINTH, MS 38834
(662) 233-5700

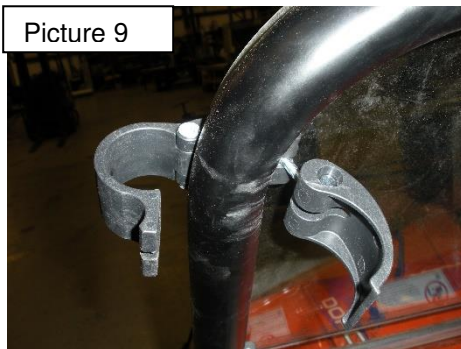
Installation Instructions

- F. Install Trail Armor Fast Clamp to the outside/exterior of the upper panel. Secure with M6 screws. See Picture 8. Tighten until rubber grommet inside the windshield's pre-drilled holes has pressure. **Do not overtighten! If you overtighten, you will pull out the brass insert and break the black spacer with the flanged edge and/or crack the upper panel.**
- G. Locate two 14 1/2" pieces of side edge-grip bulb seal. Install push on gaskets next to the upper fast clamp towards the outside of the vehicle with bulb facing the rear of the vehicle same as lower gasket. See Picture 8A.
- H. Before installation of the rear window, the rear seat harnesses will need to be removed temporarily. Remove the nuts and bolts from the rear cross bar and lay harnesses aside. Also, if equipped with a roof, the rear screws in the roof may need to be loosened or removed temporarily.

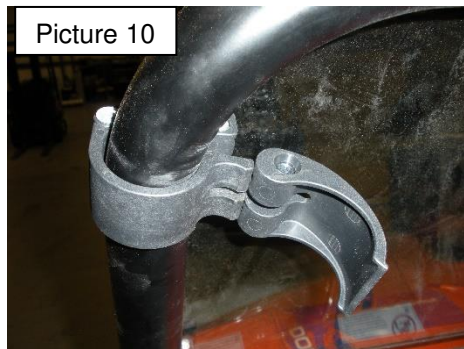


Picture 8A

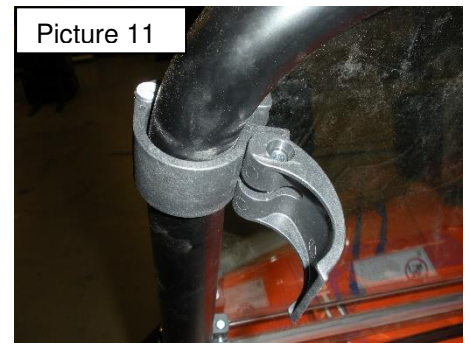
- I. With assistance, position upper panel onto the rear of the roll cage so that the panel's lower side bulb seal seals against the top of the bed panel. Start with the top center clamp first. Clamp into place as shown in Picture 9 – 12. Rotate the fast clamp's camlock clockwise to adjust tension on your roll cage. Secure Fast Clamps.
- J. Making sure the harnesses are not twisted, slide the brackets of the harnesses back through the slots of the rear window and re-install the nuts and bolts removed in Step H. Be sure to tighten SECURELY!



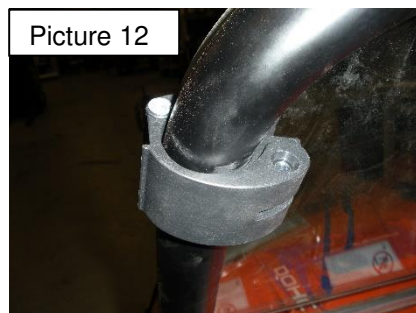
Picture 9



Picture 10



Picture 11



Picture 12