

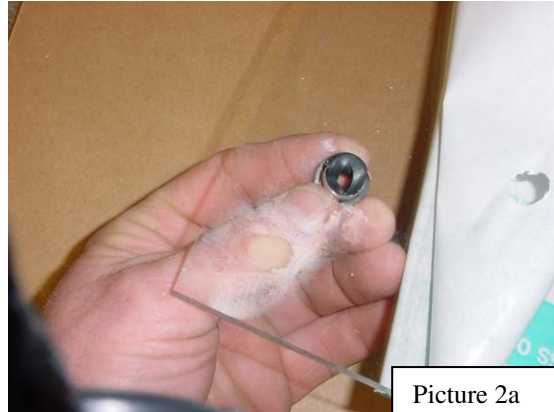


Installation Instructions for Yamaha Rhino CoolFlo Windshield with Fast Clamps

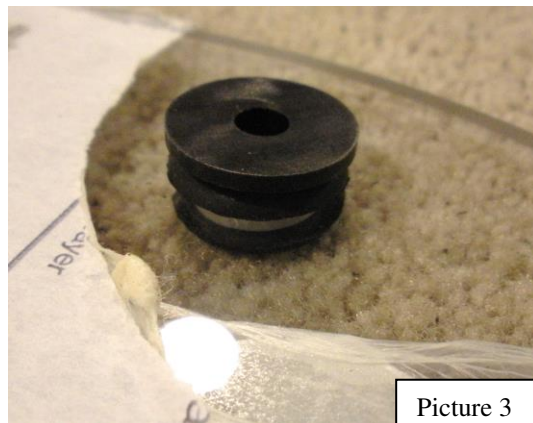
Warnings and Product Liability Disclaimer

This product is intended to be used as a cosmetic accessory under normal equipment operation and should not be depended upon or used as a safety device. Manufacturer assumes no liability for personal injury or equipment damage as the result of use or installation of this accessory. User assumes all risk. User should carefully read all instructions prior to installation.

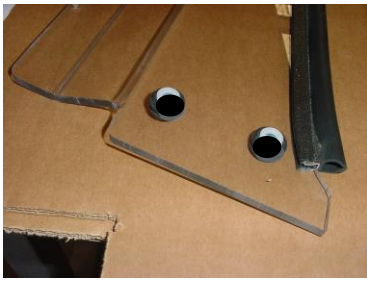
- A. Carefully lay upper and lower windshield panels on flat surface; peel back the protective sheeting around the outer edges only enough to reveal the pre-drilled mounting holes. Do not peel the protective sheeting completely at this time! See picture 1.



- B. Insert supplied rubber grommets into the pre-drilled holes of the windshield panels. See picture 2a. Properly installed, the grommets' shoulder edges are uniform on both sides of the windshield. See picture 2b.



- C. Place black plastic sleeve spacers with flanged edge into each rubber grommet inserted in the windshield panel. Flange goes on the front (exterior) side of the windshield. See picture 3A. Locate the stick-on upper joint trim: this serves as a cushion between the two windshield panels and has a thick edge and a thin edge. Apply upper stick on joint trim to **outside** upper edge of lower panel turning its thick edge to the top. Apply evenly along the upper edge of lower panel. Avoid stretching during application. See picture 3B and 3C.



Picture 3A



Picture 3B

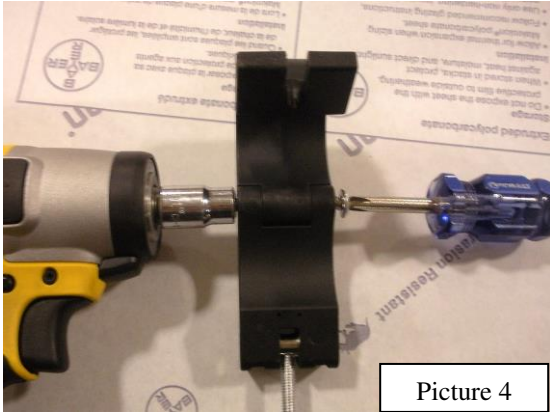


Picture 3C

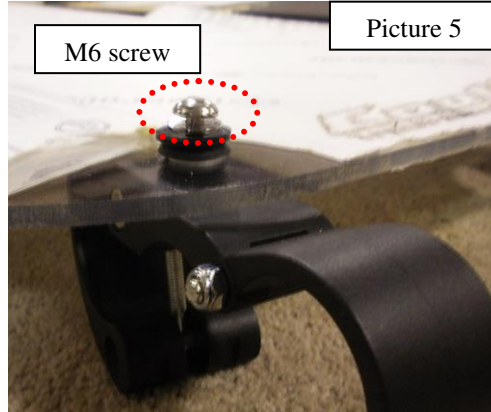


Picture 3D

- D. Install push-on edge trim gasket to the bottom contour cut edge of the lower windshield panel. Roll on by hand as shown in picture 3D. If you need to, carefully tap on with soft hammer.
- E. Tighten hinge joints on the Trail Armor Fast Clamps for the bottom windshield panel enough to where the screws grab the nylock nuts but the clamps will still freely open and close. See Picture 4.



Picture 4



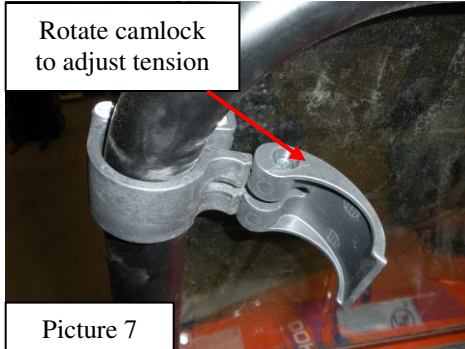
M6 screw

Picture 5

- F. Install Trail Armor Fast Clamp with the hinge tightened in step E to the outside/exterior of the lower windshield panels. Secure with M6 screws. See Picture 5. Tighten until rubber grommet inside the windshield's pre-drilled holes has pressure.
- G. With assistance, position bottom panel of windshield on lower roll cage so that the bulb seal meets the hood contour. Clamp into place as shown in Picture 6 – 9. **These pictures are for reference only to show the function of the fast clam, not the location. See Picture 13 for fast clamp location.** Rotate camlock clockwise to adjust tension on your roll cage.



Picture 6



Picture 7

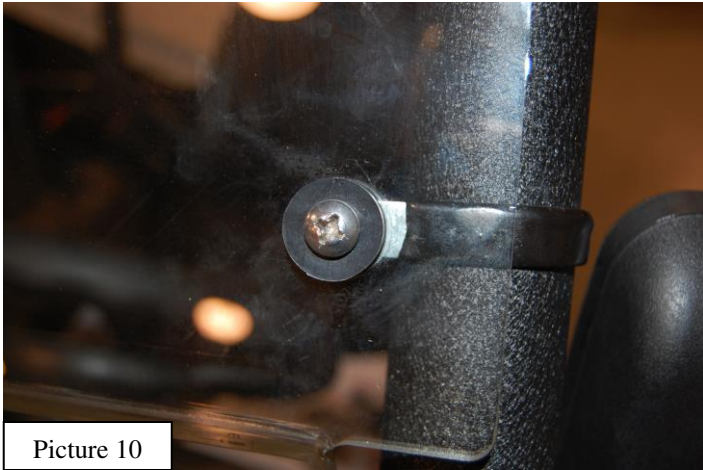


Picture 8

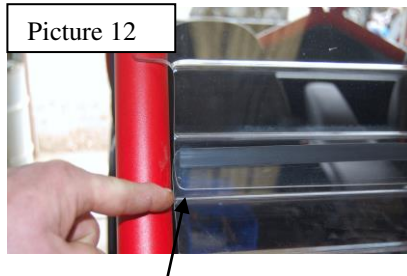


Picture 9

- H. With assistance, place upper windshield panel against the front side of the roll cage. Insert ¼-20 x 1 ¼”screws through the black plastic sleeve spacers-grommet and into the strap clamps. Place nuts over screws and finger tighten. See pictures 10 and 11. **The nylock nut is a locking nut and does not have to be bottomed out to hold tension. To avoid cracking windshield, do not overtighten.**



- I. Adjust upper windshield up or down the roll cage maintaining an 1/8 to 1/4“ margin between the lower edge of the upper windshield and the bend of the lower windshield panel. See picture 12. Upper windshield panel goes over the bent portion of the lower panel. **Do not over tighten clamps. See picture 11 to see gap in properly tightened clamp. Clamp ends should not touch or you will eventually break the windshield.** See pictures 13 and 14 for properly installed windshield.



You can now remove and stow the lower panel any time to reduce the back draft dust and let the cool air flow through without giving up any eye protection.

Enjoy! Any questions, contact Trail Armor at 662-233-5700.