



Of course, we will be happy to carry out maintenance work on your Oil Mist Separator for you. Please contact us directly and we will assign our trained personnel. During a professional maintenance we will

- Check the system for imperviousness and functioning
- Check the function of the measuring devices
- Visually inspect the entire application
- Check the function of the fittings

If requested:

- Negative pressure measurement
- Vibration measurement
- Volume flow measurement

You can also carry out some maintenance work yourself, such as changing the filter cartridges. You will find instructions for this on the following pages.

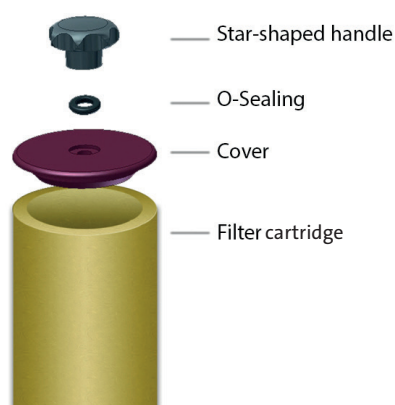
From a vacuum of -100 mbar (readable on the S7 pressure gauge), the installed filter cartridges need to be replaced. The other spare parts should also be checked while in operation.

If no spare parts are available, please get in touch with your contact person at FRANKE-Filter directly or with one of our worldwide partners to obtain original spare parts!

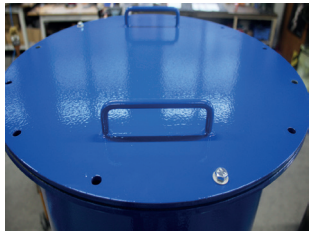


ONLY CARRY OUT ALL MAINTENANCE WORK WHEN THE FILTER SYSTEM IS SWITCHED OFF!

Structure of the FRANKE-Filter filter cartridge



CHANGING OF THE FILTER CARTRIDGES



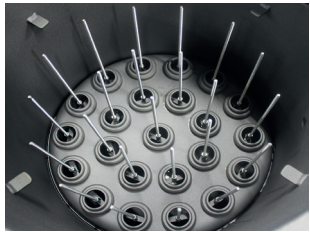
1. Switch off the blower.
2. If existing, shut throttle valve at suction pipe.
3. Detach the screws and remove the filter lid (S4).



4. Remove the demister (if existent) and clean with compressed air if necessary.



5. Detach the star handles, remove the o-ring-seal and the filter cartridge lid. Star handles and filter cartridge covers will be reused.



6. Remove the saturated filter cartridges which can be disposed as hazardous waste.



7. Carefully and cautiously place the new filter cartridges on the cartridge socket and align the threaded rods centrally.



8. Place the filter cartridge cover on the filter cartridges.



9. Insert the new o-ring-seals which are included in every delivery.

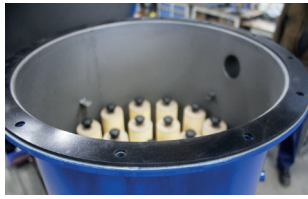


10. Hand-tighten the star handles.



DO NOT TIGHTEN THE STAR HANDLES TOO MUCH, OTHERWISE THERE IS A RISK OF CRUSHING!

CHANGING OF THE FILTER CARTRIDGES



11. Place the lid gasket back on the filter bowl rim.



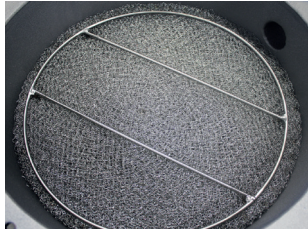
REPLACE LID GASKETS IF NECESSARY.



12. Close the filter lid and fasten with screws.

13. Recommissioning: Open the throttle valve and the vacuum regulating valve (see point 2).

MAINTENANCE OF DEMISTER (IF INCLUDED IN THE SCOPE OF DELIVERY)



The demister is located in the filter housing above the microfiber cartridges

- Remove the demister
- Clean the demister with compressed air
- Reinstall the demister

EXCHANGE OF MEASURING DEVICES (IF INCLUDED IN THE SCOPE OF DELIVERY)



- Unscrew measuring device
- Seal in new measuring device and screw on

MAINTENANCE OF EXTERNAL BYPASS (IF INCLUDED IN THE SCOPE OF DELIVERY)



- Unscrew filter
- Seal in and screw on new bypass filter

MAINTENANCE SIDE CHANNEL BLOWER (IF INCLUDED IN THE SCOPE OF DELIVERY)



- See attached manual of the manufacturer
- Carry out noise check
- Carry out visual inspection of the seals

REPLACEMENT OF A DEFECTIVE SIDE CHANNEL BLOWER PREFERABLY AT STANDSTILL

If a shutdown is not possible, then the following points must be observed when replacing during operation:

1. De-energize the defective side channel blower
2. Disconnect
3. Loosen pipe and flange connections
4. Dismantle the side channel blower and immediately close all openings airtight in a suitable manner to avoid external air in the system.
5. Reassemble all piping to connect the new side channel blower
6. Make sure that the voltage and frequency of the motor match those on the nameplate. Connection must be carried out by an experienced electrician with the appropriate specialist tools.

VISUAL INSPECTION / MAINTENANCE INTERVALS

Commissioning phase				Operating phase		
	Filter operating status	ON	OFF	Filter operating status	ON	OFF
Bypass filter (if included in delivery)	weekly		X ¹	monthly		X ¹²
Vacuum	weekly	X ³		monthly	X	
Filter cartridges				Replace at S7 = -100 mbar		X

- 1 Clean when contaminated
If possible, perform maintenance during standstill
If a standstill is not possible, ensure that no external objects are drawn into the suction pipe
- 2 If necessary, more frequently in the case of severe air pollution
- 3 More frequently if necessary