



BOSCH

RefinemySite

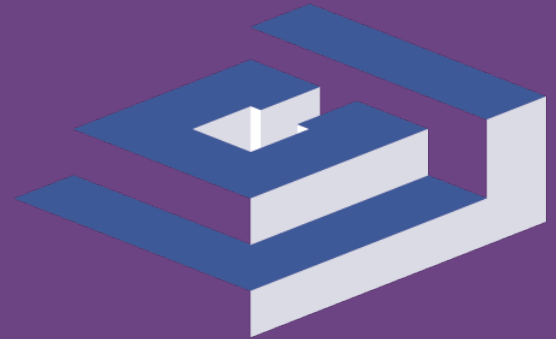
Lean Collaboration Platform



25TH LCI CONGRESS

25 YEARS OF LEARNING:
SUPERCHARGE YOUR
LEAN JOURNEY IN THE
MOTOR CITY

OCTOBER 24-27, 2023
DETROIT, MICHIGAN





RefinemySite

Lean Collaboration Platform



Rafael Franca

Business Manager NA



Andrew Ortman

Sales Manager NA



Karina Kuyek

**Customer Success Manager
& Lean Specialist NA**





BOSCH

RefinemySite
Lean Collaboration Platform

About Bosch

One of the largest and most innovative companies globally



100

Billion dollars sales revenue



3.4

Billion dollars EBIT from operations



401,300

Bosch associates worldwide at year-end



440

Subsidiaries and regional companies in more than **60 countries**

59,000

Bosch researchers and developers worldwide

In 2016, Bosch invested **7 billion €** research and development

120

Bosch research and development locations worldwide¹

3%

of them work in Corporate Research

In 2016, **345 million €** were invested in Corporate Research

1,600

associates in Corporate Research at 12 locations in North America, Europe, Russia, Asia-Pacific and India

Off this, **5%** came from public funding

Bosch creates a new invention **every 22 minutes**



Lean Construction Institute
Transforming the Built Environment



Who we are

**OVER 100 YEARS HERITAGE SUPPORTING
GENERAL CONTRACTORS AND WORKERS
IN THE CONSTRUCTION INDUSTRY TO
COMPLETE THEIR PROJECTS
EFFICIENTLY**



BOSCH POWER TOOLS

**COMMITTED TO LEAN AND THE LAST
PLANNER SYSTEM®**



Our mission is centered on revolutionizing collaborative work practices through our Lean Collaboration platform.



For everyone in the construction industry who wants to improve team collaboration and engagement, RefinemySite is a field planning solution that transforms the way project teams work together.



Easy to use



Increasing velocity of the value streams



Access to data in real-time



Lean Construction Institute
Transforming the Built Environment



We connect people and data to allow smarter field decisions – in real time

1 Collaborative planning

High engagement & process stability through involvement of trades in the detailed schedule

2 Efficient execution

Trade partners get a quick overview of their tasks within a mobile app focused on the current week

3 Consolidated documentation

Direct connection between the schedule and the documentation of tasks also support by the app.

4 KPIs for improvement

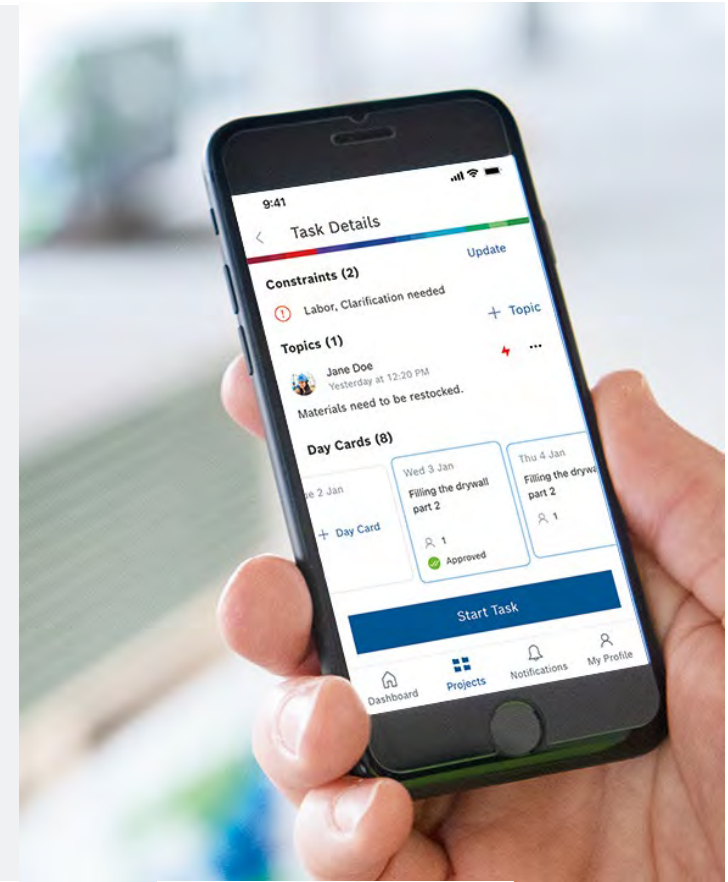
Team KPIs are automatically tracked to analyse root causes and finding improvement potential

5 Importer and Public APIs

We transform your existing Gantt Chart into a visual process overview anyone can participate

6 BIM model exploration

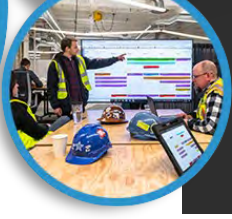
Through an easy BIM import, all participants benefit from location based information depending on their assigned tasks



RefinemySite on the jobsite

A digital solution brings Lean practices to the next level by:

- Enhancing team collaboration through increased visibility
- Providing real-time information
- Capturing data that facilitates successful project outcomes.



COLLABORATIVE PLANNING:
Milestone and Phase Planning

MAKE-WORK READY MEETING:
Hand-offs, constraints meeting

DAILY HUDDLE MEETING:
validation of work done / not done

WEEKLY WORK PLANNING

PLANNING AND DOCUMENTING WORK WITH THE TRADES

CONNECT AND INTEGRATE YOUR MASTER SCHEDULE FOR FIELD PLANNING

Hundreds of customers trust our solution

Bosch's **RefinemySite** takes pull planning to the next level, turning notes on a wall into coordinated virtual scheduling. This software is **easy to use, read**, and has become a **go to reference** for our direct project team along with our subcontractors.

Project Manager, WI

We've looked at 3 other digital scheduling platforms and none compare to the straightforward approach **RefinemySite** takes. From Milestone Planning all the way down to Daily Tasks...this program gives every General Contractor and their Trade Partners **meaningful collaboration, accountability** and **KPI's**.

Superintendent, TX

RefinemySite in my opinion is the **best, leanest tool on the market**.

Scheduling Manager, AZ

No one in the market has come up with such an **easy-to-use solution** and the Bosch **brand** is **very strong and brings a great advantage**.

Project Manager, CA

We're **committed to using RefinemySite** for **all of our projects** moving forward.

Project Manager, FL



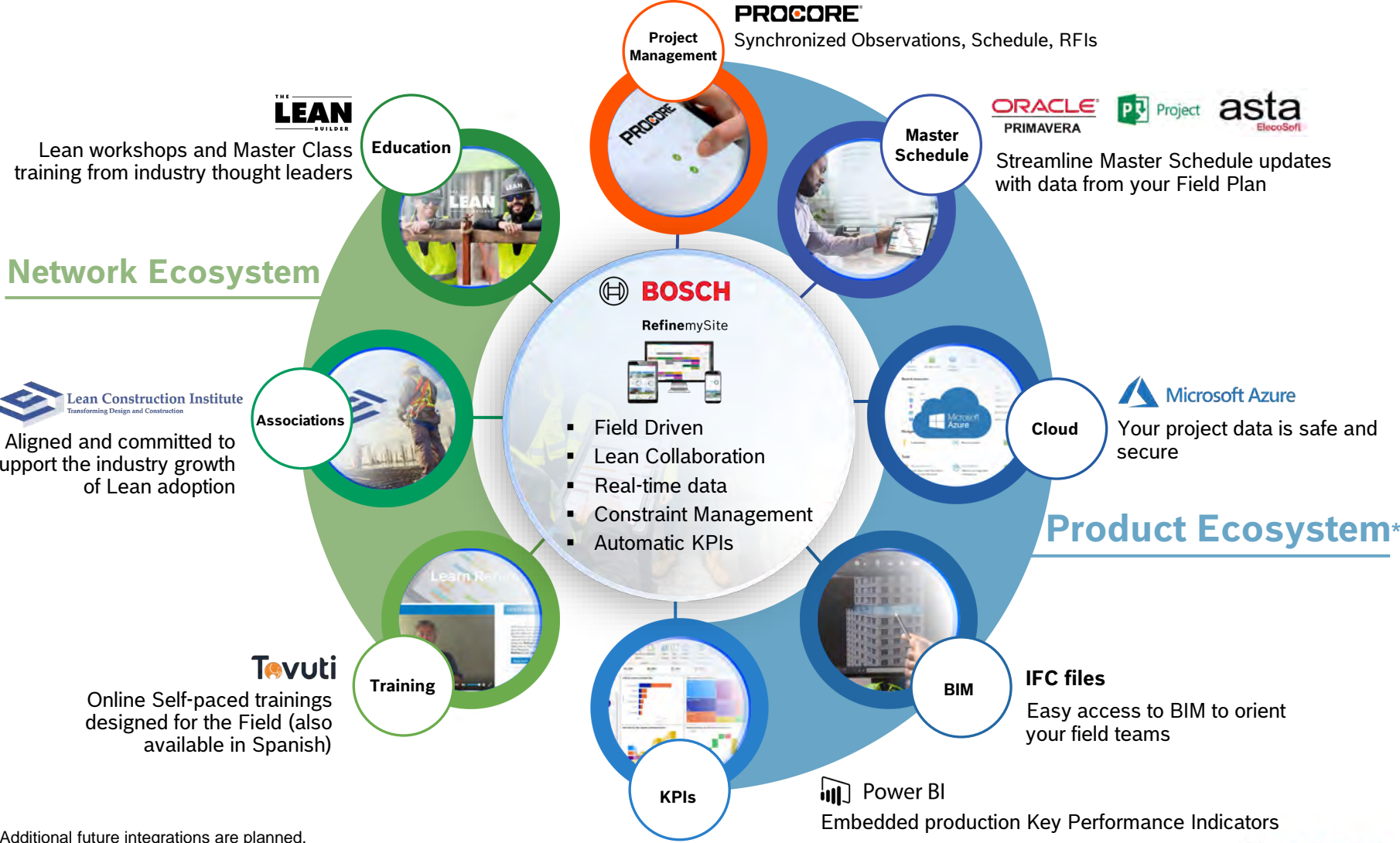
Bosch RefinemySite

An Ecosystem of Partnerships

RefinemySite's ecosystem of partnerships enriches user experiences throughout their project journey.

We've integrated with tools like Oracle Primavera, MS Project, and the leading project management platform, Procore.

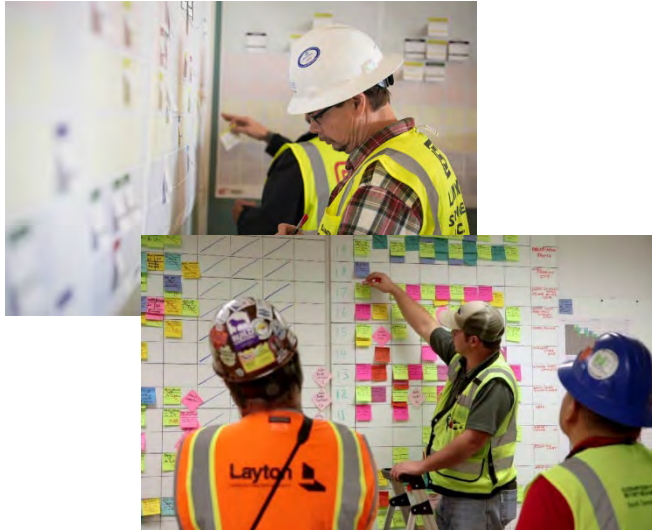
We ensure data security with a trusted cloud service, and teamed up with industry leaders like LCI and The Lean Builder for training and education.



*Additional future integrations are planned.

Ways teams can implement the Last Planner System®

Boards & Sticky Notes



- + Collaborative
- + No software to learn
- + **Some** changes are quick and easy to make
- + Tactile nature of work
- + Some visual benefits
- Little opportunity for data analysis
- Manual reviews
- Information is available only in the trailer
- No real-time information
- Space is limited



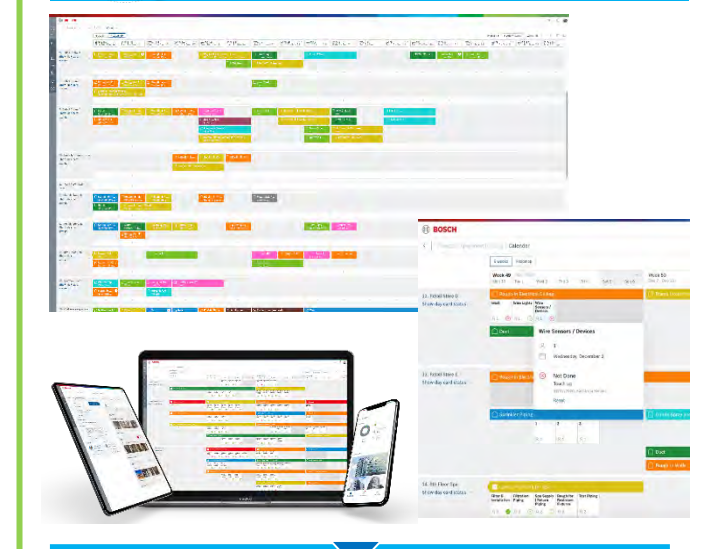
MS Excel / MS Project



- + Widely available
- + High degree of familiarity
- + Shareable and permanency is improved over paper
- Limited user interface/usability features
- Cannot be shared for real-time updates
- Limited continuous improvement of functionality
- Large administrative burden



RefinemySite



- + Real-time collaboration and communication
- + Transparency and visibility
- + Automatic data calculation
- + Accessibility in the field
- + Intuitive and easy to use
- + Affordable
- Adjustment to learn a digital tool
- Requires registration

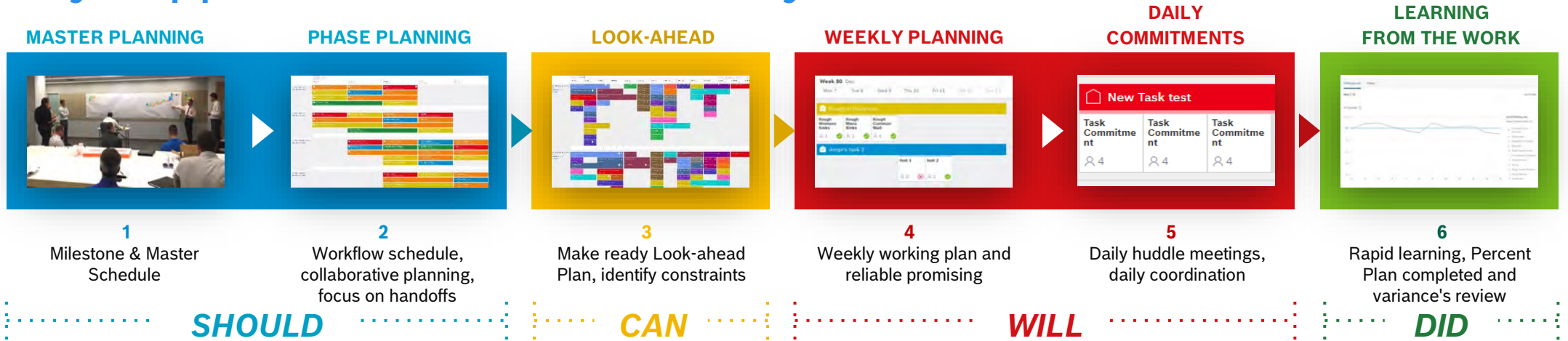




BOSCH

RefinemySite Lean Collaboration Platform

Fully supports the Last Planner System®



THE LAST PLANNER SYSTEM®



Optimize Team Collaboration, Transparency, Visibility and have the information anytime and anywhere.

Bosch RefinemySite

“As Lean construction evolves and grows in our industry, a **digital solution** will accelerate continuous improvement and unify teams around a common tool - accessible in everyone's pocket. **Bosch RefinemySite provides that solution to help construction teams in the field.**”

Keyan Zandy and Joe Donarumo



RefinemySite is a Cloud-based construction collaboration platform that **applies Lean principles** to enable your entire team **from the GC Office to Trade Contractors** to **plan, communicate, document, collaborate** and **execute in real time**. Its the digital tool that works in tandem with your **Last Planner System®** process and puts it all together in one **simple collaborative ecosystem**.

Highlights

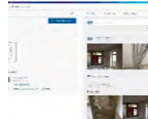
DIGITAL LAST
PLANNER BOARD
INCLUDING
DAYCARDS



WORK
ASSIGNMENT



COMMUNICATION &
COLLABORATION



REAL-TIME
UPDATES



BIM MODEL
INTEGRATION



CONSTRAINT
MANAGEMENT



TRADE
PARTNERS APP



AVAILABLE IN
MULTIPLE
LANGUAGES

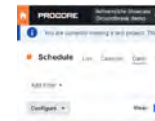


KEY
PERFORMANCE
INDICATORS



PROCORE
INTEGRATION

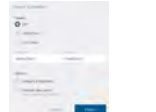
Coming soon



NOTIFICATION
TOOL



EXPORT PDF,
CSV, XLM



MULTIPLE
FILTERING
OPTIONS



VOICE TO TEXT
CAPABILITY



2D FLOORPLAN

Coming soon



RESCHEDULE
PROJECTS



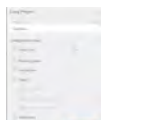
DEPENDENCIES



BLOCK CALENDAR
DATES: WEEKENDS
/ HOLIDAYS



COPY PROJECTS



MASTER
SCHEDULE
INTEGRATIONS



And much more to come >>>



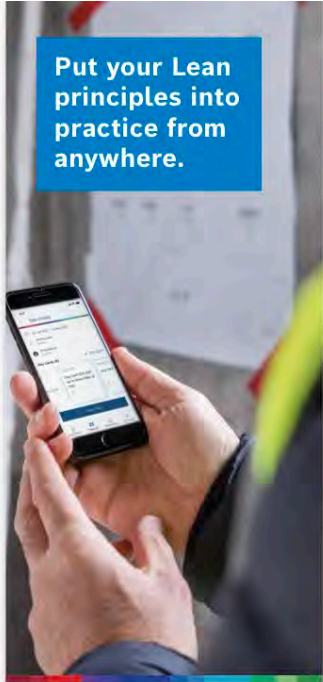
BOSCH

RefinemySite

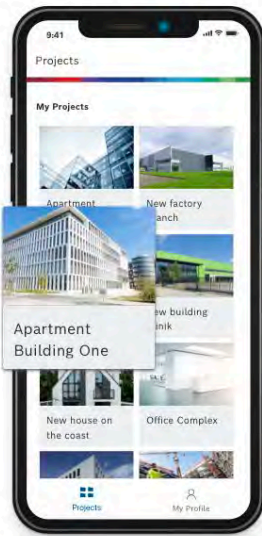
Lean Collaboration Platform

Feature Highlight: iOS and Android App for Trade Partners

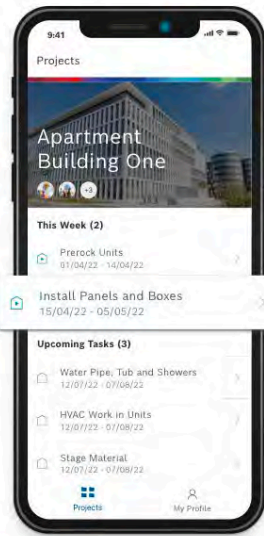
Put your Lean principles into practice from anywhere.



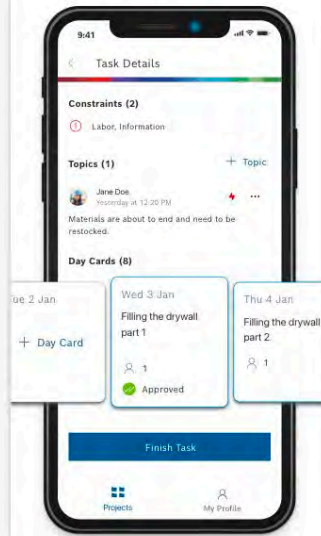
View all projects on a single screen.



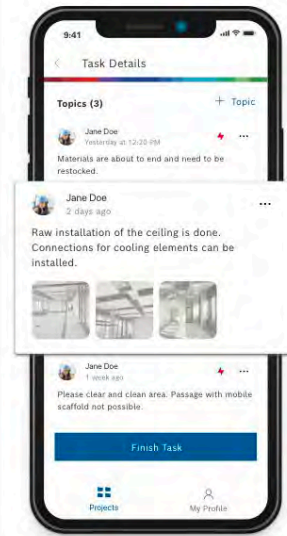
Follow tasks in a few taps.



Manage day cards.



Share topics with your coworkers.



Highlights

Focused on weekly and daily activities so trades can easily view projects, visualize tasks, validate daily work and collaborate with the project team

Works offline: Documentation within the app will be synced to the cloud once user is back online

Push notifications: Notify app users of critical project information and changes to the plan



BOSCH

RefinemySite
Lean Collaboration Platform

Full integration with Master Schedule Applications

Bosch **RefinemySite** developed a Field Planning tool that connects with your Master Schedule Application so your schedulers can easily update their Master Schedule and the Field Teams can work collaboratively on an easy-to-use solution that applies all phases of the LPS®

Master Schedule (CPM)

Scheduling Team

P6 / MS Project, etc.

Long-term plan
Owner updates
Report costs
Model cash-flow

Last Planner System®

Field Team

RefinemySite

Ease to use and Intuitive
Collaboratively created workplans
Constraint Management
Real time updates

Updates from RefinemySite as needed

Import from your Master Schedule

MASTER PLANNING PHASE PLANNING LOOK-AHEAD WEEKLY PLANNING DAILY COMMITMENTS LEARNING FROM THE WORK



Master Schedule and RefinemySite integration advantages:

Over 40%-time savings for Master Schedule updates

Master Schedule reflects work as completed in the field under the direction of the Superintendent

The only solution that provides a seamlessly integration between a Master Schedule application and a true Last Planner System® application

Project Executives can see both a Master Schedule and Field Planning perspective of the work in Real-time



Highlights

Integrating **RefinemySite** field planning into Procore's application

Log in directly from PROCORE with no need to log into different systems

Transfer the schedule data to PROCORE

Real elements (tasks) in PROCORE will be processed by PROCORE and can link to their data including RFIs, constraints (observations) and Submittals.

Transfer PROCORE data into Bosch RefinemySite

The screenshot displays the Procore Observations interface. At the top, there is a navigation bar with the Procore logo, project information (RefinemySite-Showcase Groundbreak demo), a search bar for observations, and a favorites section. A notification banner indicates that 3 observations are ready to be sent. Below this, the 'Observations' section is active, showing a list view. The list includes columns for checkboxes, ID numbers, types, trades, titles, assignees, assignee companies, dates, and origins. Each row has 'Edit' and 'View' buttons. The table contains six entries, all categorized as 'Non-Conforma...'. The interface also features a 'Bulk Actions' dropdown, a search bar, and a '+ Create' button.

	#	Type	Trade	Title	Assignee	Assignee's Company	Date No...	Origin
<input type="checkbox"/>	6	Non-Conforma...	(edit)	Task: Paint walls	(edit)			
<input type="checkbox"/>	5	Non-Conforma...	(edit)	Task: Rafa Demo Task	(edit)			
<input type="checkbox"/>	4	Non-Conforma...	(edit)	Task: Test Fernando	Karina Kuyek			
<input type="checkbox"/>	3	Non-Conforma...	(edit)	Task: Window installation	Benjamin Höhens...			
<input type="checkbox"/>	2	Non-Conforma...	(edit)	Task: Laying tiles	Axel Gauweiler			
<input type="checkbox"/>	1	Non-Conforma...	(edit)	Task: Prepare cable installation	(edit)			



BOSCH

RefinerySite

Lean Collaboration Platform

USER CENTRICITY



Jobsite visits



Dedicated Customer Success Manager



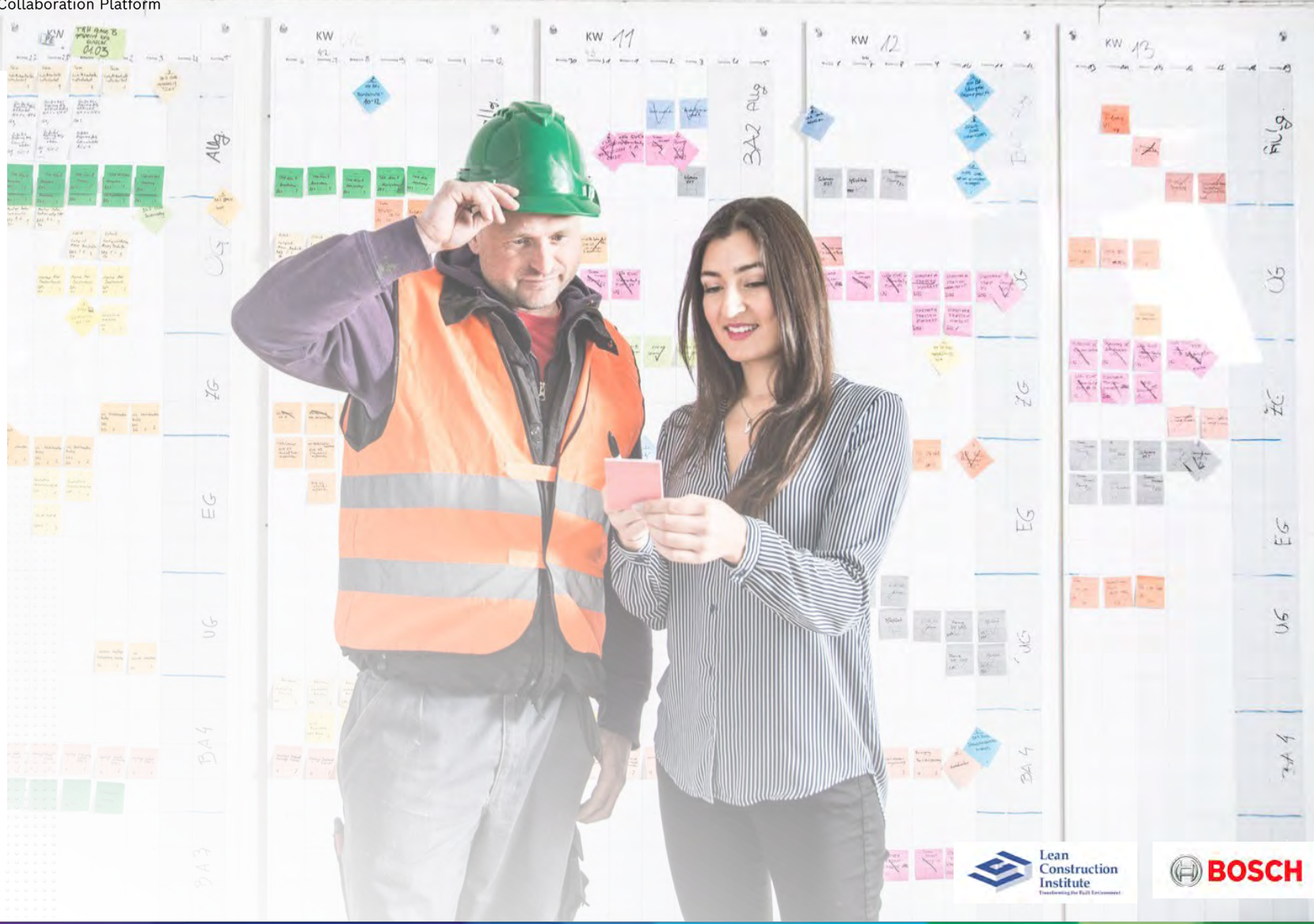
Dedicated User Experience team



Direct contact with product developers



Feedback sessions





BOSCH

RefinemySite
Lean Collaboration Platform

Learning Resources

We offer many ways to continue learning how to apply **RefinemySite** on your project.

1 In person training on site

2 Virtual individual or group trainings

3 **Self-paced training** online (take it anytime, anywhere) and get a certificate

4 Short series of videos on Youtube

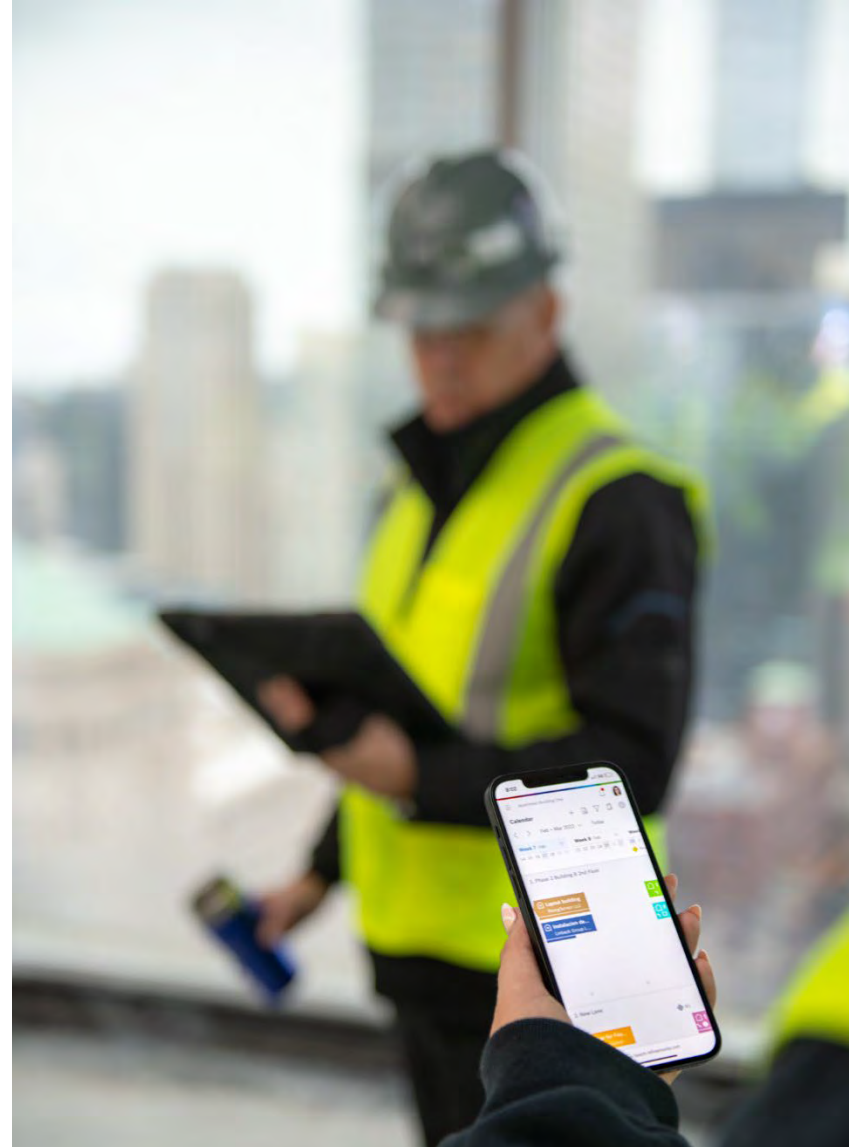
5 Follow our events and new features releases on LinkedIn

6 PDF tutorials for specific trainings

7 Playbook for Superintendents and trade contractors

8 Weekly office-hours with the project team

9 24/7 direct contact by phone, email or text to our team



We will be with you throughout the entire project

KICK-OFF

THROUGHOUT THE ENTIRE PROJECT



ONBOARDING

OFFICE-HOURS

24/7 SUPPORT



ON-SITE VISIT
AND TRAINING



ON-SITE
VISITS



ON-SITE
VISITS



ON-SITE
VISITS



VIRTUAL
TRAINING

FEEDBACK SESSIONS DIRECTLY THE PRODUCT
AND DESIGN TEAM IN GERMANY



SELF-PACED
COURSES



NEW CHAPTERS ADDED TO THE
SELF-PACED COURSES

VIDEOS AND PDF TUTORIALS GUIDE





OVER 8,000 USERS RELY AND UTILIZE REFINEMYSITE DAILY ACROSS THE GLOBE



BOSCH

RefinemySite
Lean Collaboration Platform

Rafael Franca

US Business
Rafae.franca@us.bosch.com
(312) 520-4446



Andrew Ortman

US Business
Andrew.Ortman@us.bosch.com
(224) 355-4685



Karina Kuyek

Lean Specialist & Customer
Success
Karina.Kuyek@us.bosch.com



THANK YOU



CONTACT & FOLLOW US:

E-Mail: refinemysite.us@bosch.com
Website: bosch-refinemysite.us/
LinkedIn: [linkedin.com/showcase/bosch-refinemysite](https://www.linkedin.com/showcase/bosch-refinemysite)

