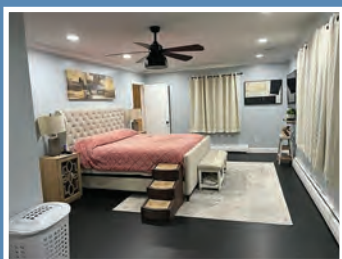


Properties *and* Lifestyles

FEBRUARY 2023



Lewisburg - Beautifully remodeled 4 bedroom, 2.5 bath, 1 story brick ranch in town. Walking distance to all Lewisburg amenities. Contemporary kitchen features granite counters, and easy flow to the dining room, living room or the screened porch. Home has a large front covered patio, 2 huge master suites, and a large spacious living room. Remodeled bath, new vinyl luxury flooring throughout, new recessed lighting and new paint inside and out.

Large level chain linked fenced backyard, mature landscaping, paved driveway, and a quiet tree lined, dead end street neighborhood.



Coldwell Banker Stuart & Watts 304.645.1242

LOCALLY OWNED & OPERATED. VISIT US AT MOUNTAINMESSENGER.COM



RE/MAX LIFESTYLE REALTY

304-536-0333

www.LifestyleRealtyWV.com



Find a home you LOVE!



Matching buyers and sellers through the love of a home.

LEWISBURG

0.52 ACRES

LAMPLIGHTER VALLEY HOME
4 BR / 2.5 BA turn key home.
\$438,800 | MLS #22-1365

Alinda Perrine 304-667-3334

LEWISBURG

4.01 ACRES

MINI FARM IN GREAT LOCATION
4 BR / 2.5 BA spacious home.
\$359,000 | MLS #23-36

Robin Perrine 304-661-3333

CHARMCO

50.4 ACRES

FOWLER FARM
3 BR / 1 BA farmhouse on 50+ acres.
\$249,000 | MLS #22-1578

Bobbie Jackson 304-667-6693

RENICK

2 ACRES

THE HERITAGE
Authentic, 4-5 BR / 2 BA farmhouse.
\$179,800 | MLS #22-1471

Alinda Perrine 304-667-3334

WHITE SULPHUR SPRINGS

0.87 ACRES

NEAR SHERWOOD LAKE
3 BR / 1.5 BA, new floors, great views.
\$159,000 | MLS #22-1099

Curtis Persinger Jr 304-992-2620

RONCEVERTE

1.68 ACRES

ON THE PERCH
3 BR / 1 BA, hardwoods, great views.
\$139,000 | MLS #22-1377

Alinda Perrine 304-667-3334

GAP MILLS

4.97 ACRES

DEER RUN ROAD PROPERTY
Cabin sites, hunting, camping & more!
\$19,000 | MLS #22-1758

Alinda Perrine 304-667-3334

RONCEVERTE

0.26 ACRES

BEAUTIFUL BUILDING LOT
Quaint neighborhood, no restrictions.
\$18,800 | MLS #22-207

Alinda Perrine 304-667-3334

Our team continues to grow! RE/MAX Lifestyle Realty welcomes Rhonda Looney & Ellie Persinger.



Alinda Perrine
Broker
304-667-3334



Bobbie Jackson
Assoc. Broker
304-667-6693



Curtis Persinger, Jr
Salesperson
304-992-2620



Robin Perrine
Salesperson
304-661-3333



Keri Larson
Salesperson
304-618-4221



Caroline Fullerton
Salesperson
301-787-2995



Landon Chaja
Salesperson
805-245-2571



Rhonda Looney
Salesperson
304-667-7886



Ellie Persinger
Salesperson
304-992-1781

304-536-0333

www.LifestyleRealtyWV.com



Outstanding Agents
Outstanding Results®



135 Bicycle Lane, Caldwell, WV 24925



Jill Allman
REALTOR, ABR, GRI, MRP
304.646.0523

GREENBRIER REAL ESTATE SERVICE

1047 WASHINGTON ST. E, LEWISBURG, WV 24901
304.645.2255



Greg Allman
Broker, ABR, CRS, GRI
304.646.1500

CALL US TO MARKET YOUR PROPERTY

Over 39 years Experience



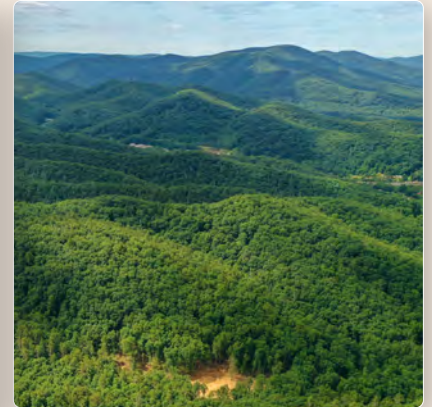
Lewisburg 22-1551 Prime Commercial building in downtown Lewisburg. Fronts Washington Street at corner of Rt. 219 Jefferson Street with high visibility. Currently fully occupied with Retail store on main level and 2nd level with 2 renovated rental apartments that each offer 1 bedroom. Living area, Kitchen and bathroom. Fantastic investment opportunity. **\$549,000**



Lewisburg 22-1287 Mini Farm with 2.4+/- acres only 5 mins from downtown Lewisburg. Like new home with barn and cross fencing. **\$429,000**



Lewisburg 22-1168 Well maintained custom brick ranch in Underwood Estates is close to all the amenities with 4 bedrooms, 2.5 baths, nice back brick patio, and more. **\$549,000**



White Sulphur 22-847 Forest Woodland offering 209+/- acres with easy access Road into the property and a building site cleared. **\$365,000**



Caldwell 22-1622 Long Range views on the top of this 51+/- acres with 2 homes, one is currently rented. Trails for hunting or ATV riding. **\$550,000**



Lewisburg 22-1658 Charming 3 bed, 2 bath completely renovated home with covered porch on 16.3+/- acres with pond, fencing, barn. **\$650,000**



Ronceverte 22-1581 This 2 bedroom 1.5 bath home offers easy access to Alderson, Ronceverte and Lewisburg with Greenbrier River frontage. **\$139,000**

VIEW ALL THE LOCAL LISTINGS ON OUR WEBSITE

WWW.GREENBRIERREALESTATESERVICE.COM



COMING HOME

starts with

**Better
Homes**
and Gardens®
REAL ESTATE

CENTRAL

www.BHGREC.com

*Local Agents, Community Driven,
Exceeding Your Expectations*

1018 Washington Street E
Lewisburg, WV 24901
Josh McGrath, Broker

Call us today!
304-645-6633

Celebrating
10 BH
&G
YEARS
of Inspiration



#22-1713

Lewisburg

\$189,900



#22-958

Crawley

\$1,650,000



#22-651

Alderson

\$224,900



#22-849

Peterstown

\$159,900



Tom Johnson,
Broker/Owner
304-667-8988



COLDWELL BANKER

STUART AND WATTS
REAL ESTATE

174 Northridge Drive, Lewisburg, WV
(304) 645-1242 www.landwv.com

Thomas H. Johnson, Broker

Each office is independently owned and operated.

Terri Johnson,
Realtor
/Salesperson
304-667-7003



#22-1648

Gap Mills

\$47,500



#21-557

Rainelle

\$169,000



#22-1313

White Sulphur

\$156,900



#22-162

Daniels

\$9,000



#21-1440

Lewisburg

\$49,900



#21-630

Ronceverte

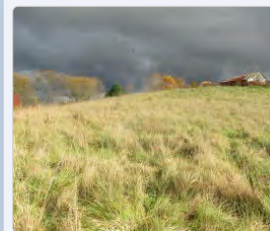
\$40,000



#21-302

Frankford

\$10,900



#21-558

Lewisburg

\$109,000



#23-16

Alderson

\$149,000



Margaret Harrah

Cell Phone: 304-667-8002
Home Office: 304-438-3798



COLDWELL BANKER
STUART AND WATTS
REAL ESTATE

174 Northridge Drive
Lewisburg, WV
(304) 645-1242

www.landwv.com
Thomas H. Johnson, Broker

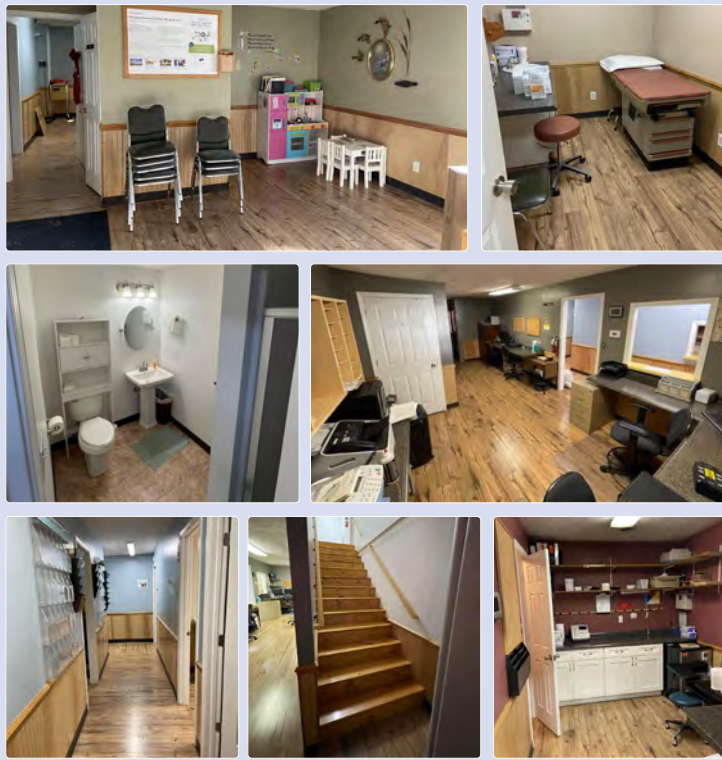
RAINELLE #21-1909

\$235,000



REDUCED

Used as a doctor's office for many years. Offering seven exam rooms, and four bathrooms. Owner will consider a lease or owner financing. Clean and updated.



RAINELLE #22-1137

\$65,000



New to market. 3 BD, 1 BA home with nice yard, and in a convenient Location. New metal roof and new propane fireplace.

MEADOW BRIDGE #22-1368

\$145,000



REDUCED

Single family home is cozy and waiting on a new family! 3 BD, 1 BA situated on 2 acres. Beautiful yard and a new heat pump make this home a special find! Offers a wood stove for back up heat, and several outbuildings. New painting and interior updates. You have to see this one for yourself! It won't last long!



CHARMCO #22-1617

\$32,900



Just in time for you hunters to grab this little oasis! A small cabin, and a Gulfstream camper, plus a two car Garage on appr. 3.5 acres. Has a well and city water and sewer. 2 to 3 bedrooms between the two dwellings.



At Grist Real Estate Associates we strive to be the most welcoming, efficient, and technologically-advanced real estate service in the Greenbrier Valley. Our experienced team works hard to dedicate our time and energy to helping people, learning more about clients' needs, and putting our best foot forward in their purchase or sale of a property.

Call Team Grist today for all your real estate needs!

Meet our team sales agents



W. Paul Grist
Broker & Owner



Donna Stoner



Paul Jacoby



Shar Holmberg



Cheryl
Gilman-Dobbs



Jenny Tuckwiller



Kerry Baldwin



Kate Barker

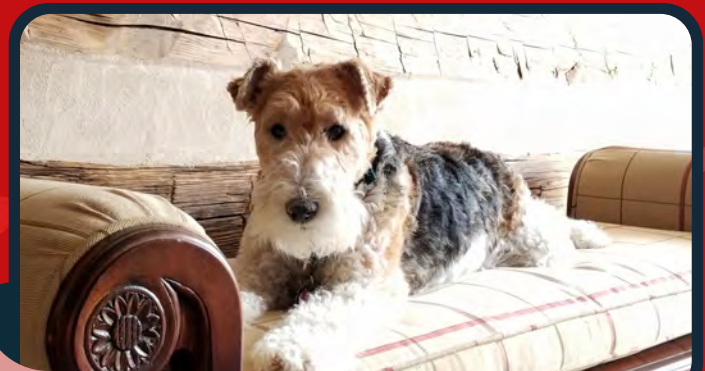
Meet our rockstar staff



Sofia Crowell
Licensed Associate &
Office Manager



Krislyn Fridley
Office & Marketing
Assistant



Cadbury Grist
Original Lead Chaser & Founding Paw-tner



OUR SALES CONTINUE TO GROW AS WE OFFER OUR SERVICES ACROSS THE COUNTRY

SOLD

MCCLUNG FARM – 1,458 +/- AC. · GREENBRIER · \$5,200,000
 LEATHERWOOD CREEK WOODLAND – 6,683 +/- AC. · CLAY · \$3,600,000
 TOLER FARM – 615 ACRES - 615 +/- ACRES · GREENBRIER · \$2,450,000
 CRYSTAL SPRING COUNTRY ESTATE - 119 +/- ACRES · MONROE · \$1,800,000
 JAMES FARM – 775.36 +/- ACRES · GREENBRIER · \$1,800,000
 PENCE SPRINGS FOREST 1,272 ACRES- 1,272 +/- AC. · SUMMERS · \$1,400,000
 PRESTON FARM 263 ACRES - 263 +/- ACRES · MONROE · \$1,400,000
 CAMP MAHONEGON SCOUT CAMP – 417 +/- AC. · UPSHUR · \$1,300,000
 HISTORIC RIFFE FARM ON INDIAN CREEK - 546 +/- ACRES · MONROE · \$1,200,000
 JOHNSON FOREST - 1084 +/- ACRES · GREENBRIER · \$1,192,000
 SIERRA MOUNTAIN FOREST – 951 +/- AC. · CALIFORNIA · \$1,100,000
 WHITE ROCK MOUNTAIN - 780 +/- ACRES · GREENBRIER · \$998,000
 IRISH MOUNTAIN WILDERNESS – 857 +/- AC. · RALEIGH · \$922,669
 BRIDLE TRAIL – 102.36 +/- ACRES · SUMMERS · \$850,000
 CHAFIN LAND ON RICH CREEK – 1,173 +/- ACRES · LOGAN · \$821,000
 JUBILEE FARMS – 226 +/- AC. · SUMMERS · \$775,000

MILL BRANCH FOREST – 255 +/- AC. · MERCER · \$750,000
 THOMPSON FARM ON WOLF CREEK – 138 +/- AC. · MONROE · \$675,000
 OLD SALISBURY FARM – 47 +/- AC. · GREENBRIER · \$657,000
 HIGHLAND FOREST – 439 +/- AC. · GREENBRIER · \$635,000
 BLACKLICK CREEK FARM – 439 +/- AC. · MERCER · \$600,000
 MEADOW BLUFF FARM – 256 +/- AC. · GREENBRIER · \$600,000
 FLINT'S FARM - 240 +/- AC. · MONROE · \$575,000
 HISTORIC DUNLAP FARM ON INDIAN CREEK - 77 +/- AC. · MONROE · \$499,000
 RICOTTILLI ON PETERS CREEK – 675 +/- AC. · NICHOLAS · \$475,000
 OLD RED SPRINGS FARM - 213 +/- AC. · SUMMERS · \$470,000
 TOLLEYS COUNTRY LINE FARM – 30 +/- AC · MONROE · \$450,000
 CARL'S CABIN AND FARM – 44 +/- AC. · MONROE · \$450,000
 MITCHELL FOREST – 313 +/- AC. · GREENBRIER · \$425,000
 LOG CABIN RETREAT - 27 +/- AC. · MONROE · \$379,000
 OLD STONY RUN FARM - 217 +/- AC. · SUMMERS · \$350,000
 PIPESTEM CREEK - 131 +/- AC. · SUMMERS · \$329,000

& COUNTING . . . BE NEXT!!

RECREATIONAL LAND AND TIMBER INVESTMENTS

WILD ROCK CANYON – 1,270 +/- ACRES · GREENBRIER · \$1,780,000
 LICK CREEK FOREST – 501 +/- AC. · SUMMERS · \$1,200,000
 SHEPPARD MOUNTAIN FOREST - 716 +/- AC. · SUMMERS · \$975,000
 ALTA 4 TRACT 3 - 182.679 +/- ACRES · GREENBRIER · \$716,000
 OAK RIDGE CABIN & FOREST - 205 +/- ACRES · MERCER · \$699,000
 FARLEY BRANCH FIELD & FOREST – 94 +/- ACRES · SUMMERS · \$600,000
 CONLEY HILL OVERLOOKING NEW RIVER – 69 +/- AC. · FAYETTE · \$600,000
 LOCKBRIDGE FOREST – 523.198 +/- ACRES · SUMMERS · \$599,000 (UC)
 MILL CREEK FOREST - 598 +/- ACRES · NICHOLAS · \$500,000
 BERTHY FOREST · 516.05 +/- ACRES · WEBSTER · \$489,000
 MUDDY CREEK FIELD & FOREST - 107 +/- AC. · GREENBRIER · \$455,000
 ALTA 4 TRACT 4 · 74 +/- ACRES · GREENBRIER · \$400,000
 ANGLINS CREEK FOREST – 268 +/- ACRES · NICHOLAS · \$399,000
 TIN ROAD – 285 +/- ACRES · NICHOLAS · \$399,000
 SPRUCE KNOB FOREST - 115 +/- ACRES · PENDLETON · \$397,500 (UC)
 HOMINY FALLS – 50 +/- ACRES · NICHOLAS · \$269,900

WOLFCREEK FOREST - 116 +/- ACRES · MONROE · \$232,000
 SPRINGFIELD – 72.5 +/- ACRES · MONROE · \$230,000
 GRASSY CREEK POND – 73 +/- ACRES · NICHOLAS · \$219,000
 RIDGE FOREST – 77.05 +/- ACRES · GREENBRIER · \$189,000
 WARD ROAD – 58 +/- ACRES · NICHOLAS · \$175,000
 BAILES ROAD – 77 +/- ACRES · NICHOLAS · \$159,000
 OAK SADDLEBACK RIDGE – 86.88 +/- ACRES · GREENBRIER · \$129,000
 KELLY MOUNTAIN FOREST – 63.20 +/- ACRES · RANDOLPH · \$119,000
 CLIFFTOP ARROWHEAD – 36 +/- ACRES · FAYETTE · \$110,000
 SUGAR RUN – 77 +/- ACRES · NICHOLAS · \$99,500
 ODELL TOWN – 56 +/- ACRES · NICHOLAS · \$92,500
 ODELL TOWN NORTH – 40 +/- ACRES · NICHOLAS · \$82,500
 TWENTY MILE CREEK FOREST – 73.67 +/- ACRES · NICHOLAS · \$77,000
 ABBYWOOD LANE – 26 +/- ACRES · NICHOLAS · \$77,000
 MAYWOOD ROAD – 23 +/- ACRES · FAYETTE · \$57,500

TOTAL INVENTORY CURRENTLY FOR SALE IS \$51MM



FoxfireNation.com

304.645.7674 Office | 1029 Washington Street East | Lewisburg, WV 24901

Richard Grist | Broker, Registered Forester, Auctioneer | richard@foxfirenation.com





WE HOPE YOU WILL TRUST IN OUR RECORD OF SUCCESS

WATERFRONT

THE BIG MEADOWS ON MEADOW RIVER – 185 +/- ACRES · GREENBRIER · \$2,200,000
 SANDSTONE FALLS ADVENTURE RETREAT – 1.67 +/- ACRES · RALEIGH · \$590,000
 MEADOW RIVER TRAIL - 262 +/- ACRES · FAYETTE · \$379,000 (UC)
 PAZ EL EN RIO – PEACE ON THE RIVER – 0.719 +/- ACRES · GREENBRIER · \$249,000
 PLEASANT VALLEY FOREST – 73+/- ACRES · WYOMING · \$139,000
 GWINN'S LNDG. GBR. RIVER LOT 27 – 0.75 +/- AC. · \$45,000 · SUMMERS
 GWINN'S LNDG. GBR. RIVER LOT A1 – 0.89 +/- AC. · \$45,000 · SUMMERS
 GWINN'S LNDG. GBR. RIVER LOT A2 – 0.81 +/- AC. · \$45,000 · SUMMERS
 GWINN'S LNDG. GBR. RIVER LOT A3 – 1.32 +/- AC. · \$45,000 · SUMMERS

LAND AND FARMS

CLOVER LANE FARM - 1,630 +/- ACRES · POCAHONTAS · \$5,200,000
 SHIFLET FARM · 133 +/- ACRES · MONROE · \$950,000
 SKYVIEW FARM - 200 +/- ACRES · GREENBRIER · \$675,000
 CORLEY EQUESTRIAN CNTR. & FARM – 17.84 +/- ACRES · RALEIGH · \$625,000
 CARROLL HILL FARM – 100 +/- ACRES · GREENBRIER · \$495,000
 OLD HOMESTEAD ON MUDDY CREEK - 73 +/- ACRES · GREENBRIER · \$435,000
 LOWER SINKING FARM · 116 +/- ACRES · GREENBRIER · \$299,000
 BACHMAN BRANCH LEVEL – 17.8 +/- ACRES · FAYETTE · \$199,000
 PLEASANT VALLEY FARM – 34.06 +/- ACRES · WYOMING · \$195,000
 OTTER CREEK FARM AND FOREST · 24.922 +/- ACRES · GREENBRIER · \$112,500 (UC)

COUNTRY ESTATES

MAPLE HILLS – VIRGINIA COUNTRY EST. - 231 +/- ACRES · MECKLENBURG · \$2,100,000
 FOUR WINDS COUNTRY ESTATE – 53 +/- ACRES · GREENBRIER · \$1,500,000
 EITEL HERITAGE FARM – 139 +/- ACRES · MONROE · \$1,300,000 (UC)
 FREEDOM BANK FARM & LOG CABIN – 83.5 AC. +/- · \$1,250,000
 ESTATE AT ENTRANCE OF NEW RIVER GORGE – 6.04 +/- ACRES · FAYETTE · \$600,000
 CEDAR HILLS COUNTRY ESTATE – 0.76 +/- ACRES · SUMMERS · \$450,000

HOMES AND CABINS

LONE WILLOW MOUNTAINTOP – 96 +/- ACRES · SUMMERS · \$675,000
 PARMER MCCREERY HOUSE – SUMMERS · \$590,000
 MILL BRANCH RETREAT – 108.25 +/- ACRES · RALEIGH · \$349,000
 MONCOVE LAKE HOMEPLACE – 3 +/- ACRES · MONROE · \$335,000
 652 MAYAPPLE TRAIL, LEWISBURG, WV – 0.5 +/- ACRES · GREENBRIER · \$322,000
 2450 INDIAN MILLS RD HAVEN – 3.59 +/- ACRES · SUMMERS · \$205,000

HOMES AND CABINS (CONT.)

206 MILLER AVENUE – 0.189 +/- ACRES · SUMMERS · \$195,000
 SUTTON GRAND HOME – 0.25 +/- AC · \$155,000 · PENDLETON & GRANT
 IRISH MOUNTAIN CABIN – 16 +/- ACRES · SUMMERS · \$149,900
 WALLACE HOMEPLACE – 0.5 +/- ACRES · SUMMERS · \$124,000
 ANTHONY CREEK GETAWAY – 1 +/- ACRES · GREENBRIER · \$111,000

RESIDENTIAL LOTS

STILL WATERS B – 49 +/- ACRES · GREENBRIER · \$210,000
 STILL WATERS D – 31 +/- ACRES · GREENBRIER · \$160,000
 COUNTRY LANE OVERLOOK- 24 ACRES – 24 +/- ACRES · GREENBRIER · \$168,000
 HORSESHOE BEND LITTLE FARM - 13 +/- ACRES · GREENBRIER · \$158,000
 STILL WATERS A – 18.5 +/- ACRES · GREENBRIER · \$115,000
 LONG VIEW B - 26 +/- AC. · GREENBRIER · \$130,000
 LONG VIEW A - 17 +/- AC. · GREENBRIER · \$119,000
 HIGHLAND PARK #5 · 20 +/- ACRES · MONROE · \$115,000
 HEART OF THE NATIONAL PARK TR. 1 – 1.52 +/- ACRES · FAYETTE · \$89,000
 RED HORSE TRACT A – 12.26 +/- ACRES · GREENBRIER · \$65,000
 RED HORSE TRACT B – 11.53 +/- ACRES · GREENBRIER · \$60,000
 ROCK LICK CREEK – 10 +/- ACRES · FAYETTE · \$50,000
 PIECE OF WV HEAVEN · 2.58 +/- ACRES · SUMMERS · \$49,900
 DEER PATH – 1 +/- ACRE · MONROE · \$20,000

COMMERCIAL PROPERTIES

US-19 COMM. NEAR NEW RIVER GORGE BRIDGE – 1.3 +/- ACRES · FAYETTE · \$2,600,000
 LEWISBURG DEVELOPMENT · 18.44 +/- ACRES · GREENBRIER · \$2,395,000
 COUNTRY VIEW ASSISTED LIVING – 2 +/- ACRES · MONROE · \$1,600,000
 WOOLWORTH BUILDING ON MAIN – 0.3 +/- ACRES · FAYETTE · \$675,000
 HISTORIC ITMANN COMPANY STORE – 1.6 +/- ACRES · WYOMING · \$499,000
 VANDALIA STONE QUARRY – 18.5 +/- ACRES · GREENBRIER · \$475,000
 PIPESTEM COMMERCIAL · 4.235 +/- ACRES · SUMMERS · \$250,000
 HISTORIC B&B NEAR BEAUTY MOUNTAIN – 1.6 +/- ACRES · FAYETTE · \$195,000
 COMER COMM. BLDG. US 219 S, LINDSIDE – 0.6 +/- ACRES · MONROE · \$159,000
 211 MOUNTAIN VIEW FARM RD. CALDWELL – 0.75 +/- ACRES · GREENBRIER · \$499,000
 403 WASHINGTON ST. W, LEWISBURG – 0.647 +/- ACRES · GREENBRIER · \$269,000 (UC)
 THE HISTORIC LOVELL BUILDING – 0.18 +/- ACRES · RALEIGH · \$236,390
 MARTIN'S STORE – 1.16 +/- ACRES · GREENBRIER · \$129,000
 PINE GROVE MEMORIAL GARDENS – 4 +/- ACRES · MONROE · \$100,000

FOXFIRE REALTY IS A MARKETING MACHINE

CALL TODAY 304.645.7674 AND VISIT OUR WEBSITE FOXFIRENATION.COM



COUNTRY ROAD REALTY, LLC

204 RANDOLPH STREET WEST
LEWISBURG WV 24901

WWW.WVCOUNTRYROAD.COM
WVCOUNTRYROAD@GMAIL.COM
LIZ WICKLINE—BROKER/OWNER
(304) 647-2000



White Sulphur Springs
\$1,290,000 MLS #22-1446
4 bedroom/4 bath
Liz Wickline (304) 646-8287



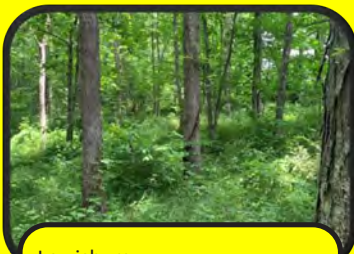
Williamsburg
\$250,000 MLS #22-1300
3 bedroom/2 bath on 25.87 acres
Liz Wickline (304) 646-8287



Crawley
\$169,000 MLS #22-444
3 bedroom/2 bath on 2.01 acres
Liz Wickline (304) 646-8287



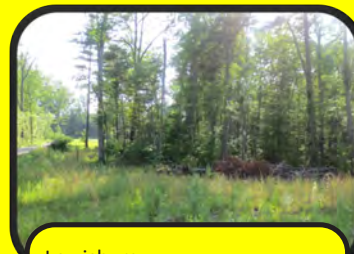
Waiteville
\$35,000 MLS #21-1365
5.15 acres
Chris Baker (304) 667-9612



Lewisburg
\$45,000 MLS #21-1060
3.52 acres in Kestrel Corner
Liz Wickline (304) 646-8287



Pipestem
\$45,000 MLS #21-1771
4.92 acres in Pipestem Point
Liz Wickline (304) 646-8287



Lewisburg
\$22,500 MLS #20-1387
1 acre lot in Woodhaven
Liz Wickline (304) 646-8287



Renick
\$189,000 MLS #20-21
125.25 acres
Liz Wickline (304) 646-8287

WHAT YOU CAN EXPECT FROM US We believe you deserve the best selling experience with clear communication and guidance every step of the way, and our proven process helps accomplish that. When you do as many transactions each year as we do, it's clear that maintaining the highest level of service gives owners confidence in their decision to trust us to sell their property.

STEP 1

Analyze and determine your property's market value.

STEP 2

Review, discuss, and complete the listing process.

STEP 3

Produce high-end property videography and photography assets.

STEP 4

Launch your property's detailed marketing campaign to our potential buyers.

STEP 5

Present offers and maintain close communication about buyer activity.

STEP 6

Closely manage the entire process through closing.



Chris Baker
Salesperson
(304) 667-9612



Janet Powell
Associate Broker
(304) 667-2817



Jeff Gee
Salesperson
(304) 646-1279



Kay Gumm
Associate Broker
(304) 661-3360



Kay Holliday
Salesperson
(304) 667-4729



Linda Brant
Salesperson
(304) 667-2500



Renee Harvey
Salesperson
(304) 661-2748



Terrence Zimmerman
Salesperson
(304) 661-2604



MLS 22-719 Caldwell - This home features long range views of the valley. Offering 4 bedrooms, and 4.5 baths. The large Kitchen has beautiful Cherry cabinets and double refrigerators for hosting family gatherings. Master bedroom features French door access to the deck. Finished lower level, security system, generator, two car garage with heated driveway! The Retreat is a gated community that includes access to clubhouse, spa, infinity pool and hot tub.



MLS 22-1167 Asbury - 3 BD, 2 BA log home is perched on top of the hill with magnificent views of the valley. 24.75 acres with 100x50 barn perfect for your animals! 10-12 minutes from I64 for easy travel to Lewisburg or Beckley. Call to schedule an appointment!



Debbie Echols
304-646-1551



174 Northridge Drive, Lewisburg, WV
(304) 645-1242 • www.landwv.com
Thomas H. Johnson, Broker



Lewisburg - This exceptional property is nestled in the center of Historic Lewisburg WV. The large main house built in 1874 was used as a manse for a local church. Sold in 1957 to Okey and Ethel McCraw, it was converted into McCraw Funeral Home and has continued until fall of 2022. The large colonial-style home boasts 17,522 sf having 4 bedrooms, 2 baths, kitchen and living room on upper floor. Lower level is conducive for entertaining, formal dining rooms and a conference room. A 4-bay garage has 1 apartment over half of it and another large room to incorporate into your needs. Approximately 12 apartments are available for rent and a house with 5 bedrooms, all which provide immediate income. Close to all amenities. This is such a unique property having MANY possibilities and plenty of parking.



A very nice 3 bedroom, 1 bath home with hardwood floors. Living room, eat-in kitchen and large utility room. All appliances convey including washer and dryer. Back yard has a pavilion with fireplace, stone wall and water fountain. Mature landscaping and white picket fence encompasses yard.



Location! Location! Location! A beautiful, completely level lot with in-town convenience and close to all amenities. This lot is zoned commercial and is ready for your new adventure. Close to WVSOM, schools, hospital, interstate, and airport. Call today!



A beautiful 5.0-acre lot with extended views just waiting for you to build your dream home on and enjoy the country setting.



Renick, WV - Well-built 1800 sq.ft. home with full basement offers 3 BR, 2 BA, FP, heat pump, fuel oil, and forced air wood stove. Detached garage is 900 sq. ft. with overhead workshop. Large barn, several outbuildings & large pond. The property has a variety of fruit trees, 72 acres of timber, 50 acres of crop/hay fields and 35 acres of pasture. Quiet & secluded with amazing views. **\$599,900**



GOODWIN HAMMOND
ATTORNEYS AT LAW ^{pllc}

THE EXPERIENCED CHOICE FOR YOUR CLOSING

304.520.3200

David G. Hammond
Attorney At Law

959 Washington Street West
Lewisburg, WV 24901

*Mention this ad and receive
a \$50 closing fee credit*

David G. Hammond, WV Bar 4843, Responsible Attorney

DREAMING OF
Country Living?



Financing that is as unique as the property you want to buy.

LOANS FOR:

- Home purchase, construction and refinance
- Large and small tracts of land – no acreage limitations
- Barns or buildings
- Fences and roads
- And much more!

FARM CREDIT KNOWS THE WAY!

One thing that makes Farm Credit different than any other loan service is we deal exclusively with rural real estate. That means we understand the true value of the land. Our loan officers are committed to providing peace of mind about your decision and will walk with you through the entire process.




FARM CREDIT

Loans for
Farms, Homes & Land!

800.919.FARM (3276)

FarmCreditofVirginias.com



 NMLS
#456965

Living The Good Life After Retirement

- Activity Rooms
- Bingo
- Church Services
- Parties
- Potluck Dinners
- Cookouts
- Live Bands
- Social Areas

Country Living With City Conveniences

All common areas have been *remodeled and redecorated*. We welcome you to stop by and see all of the improvements that have been made. One bedroom apartments for the elderly, near elderly and handicapped. HUD approved. Non-assisted living. Rent based on income.

A staff member is on call 24/7 for emergencies.

To request an application call **304-645-1308**
Monday - Friday 8:00 am - 3:00 pm

LEWISBURG MANOR

Independent Living
344 Court St., Lewisburg, WV 24901



EXCAVATING & CONTRACTING

RESIDENTIAL • COMMERCIAL • INDUSTRIAL

Road Building & Site Work
Stone Hauling • Fill Dirt • Top Soil
Water & Sewer Lines • Basements
Hydro-Seeder • Pond Building
ALL EXPERIENCED OPERATORS

Lynch Construction Co., Inc.

Over 70 Years of
Continuous Business

White Sulphur Springs, WV

304.536.1890

George N. Lynch, Founder

Shop 304.536.1895
WV001825 • Class A VA2701-030753A

Real Estate • Family Law and Estate Planning Personal Injury and Wrongful Death

Let Our 30+ Years Of Legal Experience Work For You

JL PRITT LAW FIRM JL

246 Main Street
Union, West Virginia 24983

304.772.4700



Jeffrey Pritt
Responsible Attorney





Fourth Way Properties

Check out available properties at 4thWayProperties.com

Sunset Rentals

106 Pomeroy Circle, Lewisburg WV 24901

Furnished room with small refrigerator, microwave, TV, Wi-Fi, and coin operated laundry room. All utilities included, pet friendly. Quarter mile from downtown Lewisburg, local shops and restaurants.

\$775 Monthly

\$100.00 Security Deposit, Pet friendly with additional fee.

518 Linden Avenue, Alderson WV

One bedroom one bath apartment. Beautiful large rooms with high ceilings and hard wood floors. Across the street from the Greenbrier River and Monroe Ave walking bridge. Pet friendly with additional deposit.

\$650 Monthly Plus \$650 Security Deposit

www.4thWayProperties.com

Call Terry or Isela @ (304) 647-8943

SE HABLA ESPANOL

Email us at FourthWayProperties@yahoo.com

WANT RESULTS?



*SELL Your Home or Land in The Mountain Messenger's
Elegant & Integral Real Estate Resource*

*Properties and
Lifestyles*
MAGAZINE

Call Debra Smith 304-647-5724 Today, To Get Your Property Listed!

GREENBRIER REAL ESTATE SERVICE

1047 Washington Street East
Lewisburg, WV 24901
304.645.2255
GreenbrierRealEstateService.com



Jill Allman
304.646.0523



Jake Teubert
304.667.2697



Patti Ford
304.667.1100



Charles Weikel
304.646.5054



Sandra Hunsecker
304.667.9909



Jeff Owens
304.645.5349



Debbie Smith-Canterbury
304.667.3046



Greg Allman
Broker
304.646.1500

Peterstown 23-26 Stunning views from both the front and back decks of this charming 3 bedroom 2 bath home situated on 15+/- acres. **\$384,500**



Alderson 22-1302 Emerald Isle subdivision on the Greenbrier River with a picnic shelter and a well kept home offering 3 bedrooms and 3 baths. **\$525,000**

Lewisburg 22-1556 Beautifully updated 3 bedroom, 2 bath home on nice 2.4+/- acres. Close to town and move in ready! **\$332,500**



Caldwell 22-1597 Great Investment property! Currently rented for the Caldwell Post Office, a Retail space, & 2 apartments. **New Price \$200,000**



New Listing Lewisburg 23-55 Located within a mile of downtown this home features 3 bedrooms, and 2 baths on nice 0.48+/- acre lot. **\$295,000**

Ronceverte 22-1626 Nice home with 2 bedrooms, 2 baths, front porch, and back deck. Great home for new family or to downsize. **\$139,000**



CALL US TO MARKET YOUR PROPERTY

Caldwell 22-1316 Stunning views at The Retreat! Walking distance to the club house from this 1+/- acre lot that is ready for a dream home. **\$39,000**



SOLD Rupert Home offers 4 bedrooms, 2 baths featuring everything you need on main level, 2 car detach garage on large level lot. **\$100,000**

Lewisburg 22-1299 Prime building lot at Highland Springs. Private location offering 9.4+/- mostly level acres just 12 minutes from town. **\$79,900**



Christi Lynch
304.667.4193



Ty Donovan
304.646.1936



Marie Goodwin
304.667.4456



Selina Cahill
304.646.8624



Brian Miluk
304.667.7296



Trish Hoover
304.237.9140



Bobby McClintic
304.520.9957

For dedicated, caring, and professional REALTORS®, call Greenbrier Real Estate Service!

304.645.2255

www.GreenbrierRealEstateService.com

