

Properties and Lifestyles

MARCH 2023



Caldwell – The Retreat

This home features long range views of the valley. Offering 4 bedrooms, and 4.5 bathrooms. The large kitchen has beautiful Cherry cabinets and double refrigerators for hosting family gatherings. Master bedroom features French door access to the deck. Finished lower level, security system, generator, two car garage with heated driveway. The Retreat is a gated community that includes access to clubhouse, spa, infinity pool and hot tub.

Home Style Realty – Jerri Gillespie 304-646-4067



LOCALLY OWNED & OPERATED. VISIT US AT MOUNTAINMESSENGER.COM

304-645-3200

www.oldspruce Realty.com

Jane Scott/Girlonza Scott

Broker/Owner



304-667-3208



304-667-3206



Mimi Coffman



Lisa Boggs



304-520-5303



304 667-2500



Old Spruce Realty and Auction

3237 N. Jefferson Street, Lewisburg, WV 24901



NEW LISTING

HILLSBORO – GREENBRIER RIVER – 2.6 Acres above the flood plain bordering River Trail & River. Mix of woods & pasture. New cabin & storage bldg.. Extra septic hook up for camper. **\$149,000 UNDER CONTRACT.** MLS 23-143



LINDSIDE – Luxury Log Cabin located in Fountain Springs Golf Course.- 4 bd/ 4 ba, high quality construction & beautiful interior furnishings – turn key ready to move into or produce income as an established Airbnb. **\$549,000** MLS 23-89



UNDER CONTRACT

MARLINTON CONVENIENCE STORE – Nice established business on main route to Snowshoe. Offers seating for quick food, area for sporting goods, and gas & groceries in beautiful area. **\$289,000** MLS 22-1723



WHITE SULPHUR SPRINGS HOME - Built in 2020-looks/feels brand new! 3bd, 2 ba, hwdw floors. NICE! **\$235,000**



38+ ACRES, HUNTER'S DREAM - BORDERS NAT'L FOREST ON 2 SIDES AND 2250 SQ. FT HOME., 3 bd/3 ba, office, den, fireplace – a gorgeous modular home you don't want to miss! **\$249,000** MLS # 22-1683



GAP MILLS COTTAGE - 3 bedroom, 1 bath, hardwood floors, nice front porch w/ views of Kitchen Creek. **\$84,500** MLS 22-1362



NEW LISTING

MONROE COUNTY HOME – Beautiful Mini farm on 3.2 acres, 3 bedroom, 2 bath with updates inside & out! Views every directions! **\$220,000** MLS 23-155



62 ACRES – Mountain land, amazing views – Borders Nat'l Forest. **\$139,000** MLS 22-1613



87 ACRES, MONROE COUNTY – Wooded but has 1+ acre of open land, creek, views. **\$174,000** MLS 22-1709



67 ACRES – Close to our newest NATIONAL PARK! Upper mtn. meadow, creek, views. **\$185,000** MLS 22-1319



154 + ACRES – Wooded, borders Nat'l Forest – location of Columbia Spring, some timber. **\$235,000** MLS 22-1285



SNOWSHOE AREA – 2.83 ACRES, level with views, tall trees, fern covered. – Outstanding community /outstanding mountain homes. C & R's. **\$58,000** MLS 22-894

GREENBRIER REAL ESTATE SERVICE

1047 WASHINGTON ST. E, LEWISBURG, WV 24901
304.645.2255



Jill Allman
REALTOR, ABR, GRI, MRP
304.646.0523



Greg Allman
Broker, ABR, CRS, GRI
304.646.1500

CALL US TO MARKET YOUR PROPERTY

Over 39 years Experience



Lewisburg 22-1168 Well maintained custom brick ranch in Underwood Estates is close to all the amenities Lewisburg has to offer. Formal living and dining rooms, spacious family room with stone fireplace, kitchen featuring eat-at bar and dining, and oversized rec room. Home offers 4 bedrooms and 2.5 baths, and nice back brick patio. **\$549,000**



New Listing White Sulphur Springs Office and warehouse space on Main Street with lobby, retail space, and office area. **\$499,000**



New Listing Frankford 23-142 Home features 3 bedrooms, 2 baths with open living space and covered decks on 1.3+/- acres with detached garage. **\$240,000**



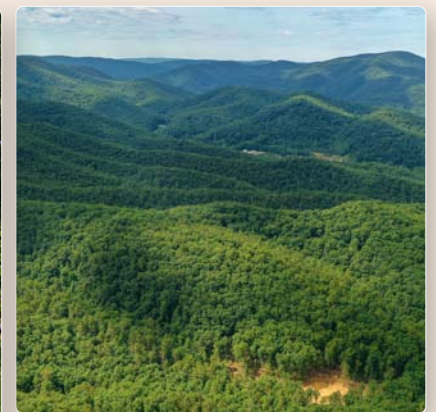
New Listing White Sulphur Industrial Building: 56,000sqft with 6,000sqft in offices, and rest in warehouse space. **\$1,700,000**



Ronceverte 22-1581 This 2 bedroom 1.5 bath home offers easy access to Alderson, Ronceverte and Lewisburg with Greenbrier River frontage. **New Price \$129,900**



SOLD Brookside-Lewisburg Beautiful 5 bedroom, 4.5 bath home with open living room and kitchen, great back deck and more. **\$565,000**



White Sulphur 22-847 Forest Woodland offering 209+/- acres with easy access Road into the property and a building site cleared. **New Price \$349,900**

VIEW ALL THE LOCAL LISTINGS ON OUR WEBSITE

WWW.GREENBRIERREALESTATESERVICE.COM



COMING HOME

starts with

**Better
Homes**
and Gardens.
REAL ESTATE

CENTRAL

www.BHGREC.com

*Local Agents, Community Driven,
Exceeding Your Expectations*

1018 Washington Street E
Lewisburg, WV 24901
Josh McGrath, Broker

Call us today!
304-645-6633

Celebrating
10 BH
&G
YEARS
of Inspiration



RE/MAX

LIFESTYLE REALTY

304-536-0333 | www.LifestyleRealtyWV.com

Find your dream home at
www.LifestyleRealtyWV.com



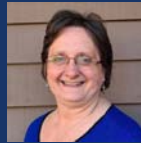
Alinda Perrine
Broker
304-667-3334



Bobbie Jackson
Assoc. Broker
304-667-6693



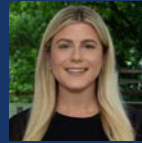
Curtis Persinger, Jr.
Salesperson
304-992-2620



Robin Perrine
Salesperson
304-661-3333



Keri Larson
Salesperson
304-618-4221



Caroline Fullerton
Salesperson
301-787-2995



Landon Chaja
Salesperson
805-245-2571



Rhonda Looney
Salesperson
304-667-7886



Ellie Persinger
Salesperson
304-992-1781

Outstanding Agents Outstanding Results®

*Discover what your property is worth with a
free home valuation from one of our amazing agents!*

304-536-0333

www.LifestyleRealtyWV.com

135 Bicycle Lane, Caldwell, WV 24925





COLDWELL BANKER

STUART AND WATTS REAL ESTATE

174 Northridge Drive
Lewisburg, WV
(304) 645-1242

www.landwv.com

Thomas H. Johnson, Broker



Margaret Harrah

Cell Phone: 304-667-8002
Home Office: 304-438-3798

RAINELLE #22-1137

\$65,000



New to market. 3 BD, 1 BA home with nice yard, and in a convenient Location. New metal roof and new propane fireplace.

RAINELLE #21-1909

\$235,000



REDUCED

Used as a doctor's office for many years. Offering seven exam rooms, and four bathrooms. Owner will consider a lease or owner financing. Clean and updated.

MEADOW BRIDGE #22-1368

\$145,000



REDUCED

Single family home is cozy and waiting on a new family! 3 BD, 1 BA situated on 2 acres. Beautiful yard and a new heat pump make this home a special find! Offers a wood stove for back up heat, and several outbuildings. New painting and interior updates. You have to see this one for yourself! It won't last long!

CHARMCO #22-1617

\$32,900



Just in time for you hunters to grab this little oasis! A small cabin, and a Gulfstream camper, plus a two car Garage on apprx. 3.5 acres. Has a well and city water and sewer. 2 to 3 bedrooms between the two dwellings.

SMOOT #22-1322

\$35,000



NEW LISTING

This property is just a jump from the Interstate and needs someone's tender touch to make it into a beautiful home site. Almost completely private. 2 1/2 acres with an outbuilding and an old house on the property. This will be gone quickly—a nice place to build.



#22-1713

Lewisburg

\$189,900



#22-958

Crawley

\$1,650,000



#22-651

Alderson

\$223,900



#22-849

Peterstown

\$159,900



Tom Johnson,
Broker/Owner
304-667-8988



COLDWELL BANKER

STUART AND WATTS
REAL ESTATE

174 Northridge Drive, Lewisburg, WV
(304) 645-1242 www.landwv.com

Thomas H. Johnson, Broker

Each office is independently owned and operated.

Terri Johnson,
Realtor
/Salesperson
304-667-7003



#22-1207

Hinton

\$400,000



#21-557

Rainelle

\$169,000



#22-1313

Richwood

\$27,999



#23-82

Minden

\$69,900



#21-1440

Lewisburg

\$49,900



#23-65

Rupert

\$129,900



#21-302

Frankford

\$10,900



#21-558

Lewisburg

\$109,000



#23-16

Alderson

\$149,900



SELLING LAND EVERYDAY, THE RIGHT WAY



WE ARE #1 IN LAND AND FARMS SALES IN WV!

Richard Grist, Broker at Foxfire Realty, invites you to visit our website, FoxfireNation.com, to see why we are the leader in land and farm sales in West Virginia.



FoxfireNation.com

304.645.7674 Office | 1029 Washington Street East | Lewisburg, WV 24901

Licensed in West Virginia and Virginia

Richard Grist | WV Broker Lic. #4575, VA Broker Lic. #0226027400, GRI, Registered Forester Lic. # 332, Auctioneer Lic. # 1751 | richard@foxfirenation.com





OUR SALES CONTINUE TO GROW AS WE OFFER OUR SERVICES ACROSS THE COUNTRY

SOLD

MCCLUNG FARM – 1,458 +/- AC. · GREENBRIER · \$5,200,000
 LEATHERWOOD CREEK WOODLAND – 6,683 +/- AC. · CLAY · \$3,600,000
 TOLER FARM – 615 ACRES - 615 +/- ACRES · GREENBRIER · \$2,450,000
 CRYSTAL SPRING COUNTRY ESTATE - 119 +/- ACRES · MONROE · \$1,800,000
 JAMES FARM – 775.36 +/- ACRES · GREENBRIER · \$1,800,000
 PENCE SPRINGS FOREST 1,272 ACRES- 1,272 +/- AC. · SUMMERS · \$1,400,000
 PRESTON FARM 263 ACRES - 263 +/- ACRES · MONROE · \$1,400,000
 CAMP MAHONEGON SCOUT CAMP – 417 +/- AC. · UP SHUR · \$1,300,000
 HISTORIC RIFFE FARM ON INDIAN CREEK - 546 +/- ACRES · MONROE · \$1,200,000
 JOHNSON FOREST - 1084 +/- ACRES · GREENBRIER · \$1,192,000
 SIERRA MOUNTAIN FOREST – 951 +/- AC. · CALIFORNIA · \$1,100,000
 WHITE ROCK MOUNTAIN - 780 +/- ACRES · GREENBRIER · \$998,000
 IRISH MOUNTAIN WILDERNESS – 857 +/- AC. · RALEIGH · \$922,669
 BRIDLE TRAIL – 102.36 +/- ACRES · SUMMERS · \$850,000
 CHAFIN LAND ON RICH CREEK – 1,173 +/- ACRES · LOGAN · \$821,000
 JUBILEE FARMS – 226 +/- AC. · SUMMERS · \$775,000

MILL BRANCH FOREST – 255 +/- AC. · MERCER · \$750,000
 THOMPSON FARM ON WOLF CREEK – 138 +/- AC. · MONROE · \$675,000
 OLD SALISBURY FARM – 47 +/- AC. · GREENBRIER · \$657,000
 HIGHLAND FOREST – 439 +/- AC. · GREENBRIER · \$635,000
 BLACKLICK CREEK FARM – 439 +/- AC. · MERCER · \$600,000
 MEADOW BLUFF FARM – 256 +/- AC. · GREENBRIER · \$600,000
 FLINT'S FARM - 240 +/- AC. · MONROE · \$575,000
 HISTORIC DUNLAP FARM ON INDIAN CREEK - 77 +/- AC. · MONROE · \$499,000
 RICOTTILLI ON PETERS CREEK – 675 +/- AC. · NICHOLAS · \$475,000
 OLD RED SPRINGS FARM - 213 +/- AC. · SUMMERS · \$470,000
 TOLLEYS COUNTRY LINE FARM – 30 +/- AC · MONROE · \$450,000
 CARL'S CABIN AND FARM – 44 +/- AC. · MONROE · \$450,000
 MITCHELL FOREST – 313 +/- AC. · GREENBRIER · \$425,000
 LOG CABIN RETREAT - 27 +/- AC. · MONROE · \$379,000
 OLD STONY RUN FARM - 217 +/- AC. · SUMMERS · \$350,000
 PIPESTEM CREEK - 131 +/- AC. · SUMMERS · \$329,000

& COUNTING . . . BE NEXT!!

RECREATIONAL LAND AND TIMBER INVESTMENTS

WILD ROCK CANYON – 1,270 +/- ACRES · GREENBRIER · \$1,780,000
 LICK CREEK FOREST – 501 +/- AC. · SUMMERS · \$1,200,000
 SHEPPARD MOUNTAIN FOREST - 716 +/- AC. · SUMMERS · \$975,000
 ALTA 4 TRACT 3 · 182.679 +/- ACRES · GREENBRIER · \$716,000
 OAK RIDGE CABIN & FOREST - 205 +/- ACRES · MERCER · \$699,000
 FARLEY BRANCH FIELD & FOREST – 94 +/- ACRES · SUMMERS · \$600,000
 CONLEY HILL OVERLOOKING NEW RIVER – 69 +/- AC. · FAYETTE · \$600,000
 LOCKBRIDGE FOREST – 523.198 +/- ACRES · SUMMERS · \$599,000 (SOLD)
 MILL CREEK FOREST - 598 +/- ACRES · NICHOLAS · \$500,000 (SOLD)
 BERTHY FOREST · 516.05 +/- ACRES · WEBSTER · \$489,000
 MUDDY CREEK FIELD & FOREST - 107 +/- AC. · GREENBRIER · \$455,000
 ALTA 4 TRACT 4 · 74 +/- ACRES · GREENBRIER · \$400,000
 ANGLINS CREEK FOREST – 268 +/- ACRES · NICHOLAS · \$399,000
 TIN ROAD – 285 +/- ACRES · NICHOLAS · \$399,000
 SPRUCE KNOB FOREST - 115 +/- ACRES · PENDLETON · \$397,500 (SOLD)
 HOMINY FALLS – 50 +/- ACRES · NICHOLAS · \$269,900

WOLFCREEK FOREST - 116 +/- ACRES · MONROE · \$232,000
 SPRINGFIELD – 72.5 +/- ACRES · MONROE · \$230,000
 GRASSY CREEK POND – 73 +/- ACRES · NICHOLAS · \$219,000
 OAK RIDGE FOREST – 77.05 +/- ACRES · GREENBRIER · \$189,000
 WARD ROAD – 58 +/- ACRES · NICHOLAS · \$175,000
 BAILES ROAD – 77 +/- ACRES · NICHOLAS · \$159,000
 SADDLEBACK RIDGE – 86.88 +/- ACRES · GREENBRIER · \$129,000
 KELLY MOUNTAIN FOREST – 63.20 +/- ACRES · RANDOLPH · \$119,000
 CLIFFTOP ARROWHEAD – 36 +/- ACRES · FAYETTE · \$110,000
 SUGAR RUN – 77 +/- ACRES · NICHOLAS · \$99,500
 ODELL TOWN SOUTH – 56 +/- ACRES · NICHOLAS · \$92,500
 ODELL TOWN NORTH – 40 +/- ACRES · NICHOLAS · \$82,500
 TWENTY MILE CREEK FOREST – 73.67 +/- ACRES · NICHOLAS · \$77,000
 ABBYWOOD LANE – 26 +/- ACRES · NICHOLAS · \$77,000
 MAYWOOD ROAD – 23 +/- ACRES · FAYETTE · \$57,500

FOX FIRE REALTY TEAM:

RICHARD GRIST, BROKER – 304.645.7674
 RANDY S. BURDETTE – 304.667.2897
 BILL ZIMMERMAN – 304.667.7026
 JOYCE SURBAUGH – 304.660.8000
 JAMIE SMITH – 304.651.9363
 DAVID SIBRAY – 304.753.7390

NEAL ROTH – 304.667.3794
 KRISTI SCOTT – 304.890.4807
 JEFF MARPLE – 304.667.3824
 BUTCH ROBERTSON – 304.667.6047
 MATT HALL – 304.661.0188





WE HOPE YOU WILL TRUST IN OUR RECORD OF SUCCESS

LIVE WATER

THE BIG MEADOWS ON MEADOW RIVER – 185 +/- ACRES · GREENBRIER · \$2,200,000
 SANDSTONE FALLS ADVENTURE RETREAT – 1.67 +/- ACRES · RALEIGH · \$590,000
 MEADOW RIVER TRAIL - 262 +/- ACRES · FAYETTE · \$379,000 (SOLD)
 PAZ EL EN RIO – PEACE ON THE RIVER – 0.719 +/- ACRES · GREENBRIER · \$249,000
 PLEASANT VALLEY FOREST – 73+/- ACRES · WYOMING · \$139,000 (SOLD)
 GWINN'S LNDG. GBR. RIVER LOT 27 – 0.75 +/- AC. · \$45,000 · SUMMERS
 GWINN'S LNDG. GBR. RIVER LOT A1 – 0.89 +/- AC. · \$45,000 · SUMMERS
 GWINN'S LNDG. GBR. RIVER LOT A2 – 0.81 +/- AC. · \$45,000 · SUMMERS
 GWINN'S LNDG. GBR. RIVER LOT A3 – 1.32 +/- AC. · \$45,000 · SUMMERS

LAND AND FARMS

FRIENDLY GOAT BERRY FARM - 62 +/- ACRES · GREENBRIER · \$450,000
 SHIFLET FARM · 133 +/- ACRES · MONROE · \$950,000
 SKYVIEW FARM - 200 +/- ACRES · GREENBRIER · \$675,000
 CORLEY EQUESTRIAN CNTR. & FARM – 17.84 +/- ACRES · RALEIGH · \$625,000 (UC)
 CARROLL HILL FARM – 100 +/- ACRES · GREENBRIER · \$495,000
 OLD HOMESTEAD ON MUDDY CREEK - 73 +/- ACRES · GREENBRIER · \$435,000
 LOWER SINKING FARM · 116 +/- ACRES · GREENBRIER · \$299,000
 BACHMAN BRANCH LEVEL – 17.8 +/- ACRES · FAYETTE · \$199,000
 PLEASANT VALLEY FARM – 34.06 +/- ACRES · WYOMING · \$195,000
 OTTER CREEK FARM AND FOREST · 24.922 +/- ACRES · GREENBRIER · \$112,500

COUNTRY ESTATES

MAPLE HILLS – VIRGINIA CTRY EST. - 231 +/- ACRES · MECKLENBURG · \$2,100,000 (UC)
 FOUR WINDS COUNTRY ESTATE – 53 +/- ACRES · GREENBRIER · \$1,400,000 (REDUCED)
 EITEL HERITAGE FARM – 139 +/- ACRES · MONROE · \$1,300,000 (SOLD)
 SOUTH MILL CREEK FARM AND CABIN – 83.5 AC. +/- PENDLETON \$1,250,000 (UC)
 ESTATE AT ENTRANCE OF NEW RIVER GORGE – 6.04 +/- ACRES · FAYETTE · \$600,000
 CEDAR HILLS COUNTRY ESTATE – 0.76 +/- ACRES · SUMMERS · \$450,000

HOMES AND CABINS

LONE WILLOW MOUNTAINTOP – 96 +/- ACRES · SUMMERS · \$675,000
 PARMER MCCREERY HOUSE – SUMMERS · \$590,000
 MILL BRANCH RETREAT – 108.25 +/- ACRES · RALEIGH · \$349,000
 MONCOVE LAKE HOMEPLACE – 3 +/- ACRES · MONROE · \$335,000
 652 MAYAPPLE TRAIL, LEWISBURG, WV – 0.5 +/- ACRES · GREENBRIER · \$322,000 (UC)
 2450 INDIAN MILLS RD HAVEN – 3.59 +/- ACRES · SUMMERS · \$205,000 (UC)

HOMES AND CABINS (CONT.)

206 MILLER AVENUE – 0.189 +/- ACRES · SUMMERS · \$195,000
 SUTTON GRAND HOME – 0.25 +/- AC · PENDLETON & GRANT · \$155,000
 IRISH MOUNTAIN CABIN – 16 +/- ACRES · SUMMERS · \$149,900
 WALLACE HOMEPLACE – 0.5 +/- ACRES · SUMMERS · \$124,000
 ANTHONY CREEK GETAWAY – 1 +/- ACRES · GREENBRIER · \$111,000 (UC)

RESIDENTIAL LOTS

STILL WATERS B – 49 +/- ACRES · GREENBRIER · \$210,000
 STILL WATERS D – 31 +/- ACRES · GREENBRIER · \$160,000
 COUNTRY LANE OVERLOOK- 24 ACRES – 24 +/- ACRES · GREENBRIER · \$168,000
 HORSESHOE BEND LITTLE FARM - 13 +/- ACRES · GREENBRIER · \$158,000
 STILL WATERS A – 18.5 +/- ACRES · GREENBRIER · \$115,000
 LONG VIEW B - 26 +/- AC. · GREENBRIER · \$130,000
 LONG VIEW A - 17 +/- AC. · GREENBRIER · \$119,000
 HIGHLAND PARK #5 · 20 +/- ACRES · MONROE · \$115,000
 HEART OF THE NATIONAL PARK TR. 1 – 1.52 +/- ACRES · FAYETTE · \$89,000
 RED HORSE TRACT A – 12.26 +/- ACRES · GREENBRIER · \$65,000
 RED HORSE TRACT B – 11.53 +/- ACRES · GREENBRIER · \$60,000
 ROCK LICK CREEK – 10 +/- ACRES · FAYETTE · \$50,000
 PIECE OF WV HEAVEN · 2.58 +/- ACRES · SUMMERS · \$49,900
 DEER PATH – 1 +/- ACRE · MONROE · \$20,000

COMMERCIAL PROPERTIES

US-19 COMM. NEAR NEW RIVER GORGE BRIDGE – 1.3 +/- ACRES · FAYETTE · \$2,600,000
 LEWISBURG DEVELOPMENT · 18.44 +/- ACRES · GREENBRIER · \$2,395,000
 COUNTRY VIEW ASSISTED LIVING – 2 +/- ACRES · MONROE · \$1,600,000
 WOOLWORTH BUILDING ON MAIN – 0.3 +/- ACRES · FAYETTE · \$199,000 (REDUCED)
 HISTORIC ITMANN COMPANY STORE – 1.6 +/- ACRES · WYOMING · \$499,000
 VANDALIA STONE QUARRY – 18.5 +/- ACRES · GREENBRIER · \$475,000
 PIPESTEM COMMERCIAL · 4.235 +/- ACRES · SUMMERS · \$250,000
 HISTORIC B&B NEAR BEAUTY MOUNTAIN – 1.6 +/- ACRES · FAYETTE · \$195,000 (SOLD)
 COMER COMM. BLDG. U.S 219 S, LINDSIDE – 0.6 +/- ACRES · MONROE · \$159,000
 211 MOUNTAIN VIEW FARM RD. CALDWELL – 0.75 +/- ACRES · GREENBRIER · \$499,000
 403 WASHINGTON ST. W, LEWISBURG – 0.647 +/- ACRES · GREENBRIER · \$269,000 (UC)
 THE HISTORIC LOVELL BUILDING – 0.18 +/- ACRES · RALEIGH · \$236,390
 MARTIN'S STORE – 1.16 +/- ACRES · GREENBRIER · \$129,000
 PINE GROVE MEMORIAL GARDENS – 4 +/- ACRES · MONROE · \$100,000

TOTAL INVENTORY CURRENTLY FOR SALE IS \$51MM



FoxfireNation.com

304.645.7674 Office | 1029 Washington Street East | Lewisburg, WV 24901

Licensed in West Virginia and Virginia





COUNTRY ROAD REALTY, LLC

204 RANDOLPH STREET WEST
LEWISBURG WV 24901

WWW.WVCOUNTRYROAD.COM
WVCOUNTRYROAD@GMAIL.COM
LIZ WICKLINE—BROKER/OWNER
(304) 647-2000



If you are ready to buy or sell, give us a call!



Caldwell
\$475,000 MLS #23-157
4 bedroom/2 bath on 15.67 acres
Liz Wickline (304) 646-8287



Lewisburg
\$390,000 MLS #23-137
4 bedroom/3 bath
Liz Wickline (304) 646-8287



Lewisburg
\$209,000 MLS #23-136
3 bedroom/2 bath
Liz Wickline (304) 646-8287



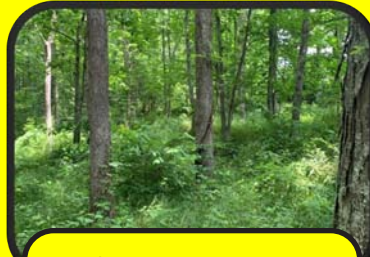
Ballard
\$139,000 MLS #23-117
3 bedroom/1 bath on 1.04 acres
Liz Wickline (304) 646-8287



Williamsburg
\$250,000 MLS #22-1304
3 bedroom/2 bath - 25.87 acres
Liz Wickline (304) 646-8287



White Sulphur Springs
\$2,000,000 MLS #21-1148
3 bedroom/3 bath on 45 acres
Liz Wickline (304) 646-8287



Lewisburg
\$45,000 MLS #21-1060
3.52 acre lot
Liz Wickline (304) 646-8287



Crawley
\$169,000 MLS #22-444
3 bedroom/2 bath on 2.01 acres
Liz Wickline (304) 646-8287



Waiteville
\$35,000 MLS #21-1365
5.15 acres
Chris Baker (304) 667-9612



Pipestem
\$45,000 MLS #21-1771
4.92 acres in Pipestem Point
Liz Wickline (304) 646-8287



Renick
\$189,000 MLS #20-21
125.25 acres
Liz Wickline (304) 646-8287



Lewisburg
\$25,000 MLS #20-1390
1.08 acre lot in Woodhaven
Liz Wickline (304) 646-8287



Chris Baker
Salesperson
(304) 667-9612



Janet Powell
Associate Broker
(304) 667-2817



Jeff Gee
Salesperson
(304) 646-1279



Kay Gumm
Associate Broker
(304) 661-3360



Kay Holliday
Salesperson
(304) 667-4729



Linda Brant
Salesperson
(304) 667-2500



Renee Harvey
Salesperson
(304) 661-2748



Terrence
Zimmerman
Salesperson
(304) 661-2604



At Grist Real Estate Associates we strive to be the most welcoming, efficient, and technologically-advanced real estate service in the Greenbrier Valley. Our experienced team works hard to dedicate our time and energy to helping people, learning more about clients' needs, and putting our best foot forward in their purchase or sale of a property.

Call Team Grist today for all your real estate needs!

Meet our team sales agents



W. Paul Grist
Broker & Owner



Donna Stoner



Paul Jacoby



Shar Holmberg



Cheryl
Gilman-Dobbs



Jenny Tuckwiller



Kerry Baldwin



Kate Barker

Meet our rockstar staff



Sofia Crowell
Licensed Associate &
Office Manager



Krislyn Fridley
Office & Marketing
Assistant



Cadbury Grist
Original Lead Chaser & Founding Paw-tner



Debbie Echols
304-646-1551



174 Northridge Drive, Lewisburg, WV
 (304) 645-1242 • www.landwv.com
 Thomas H. Johnson, Broker



COLDWELL BANKER
STUART AND WATTS
 REAL ESTATE



Lewisburg - This exceptional property is nestled in the center of Historic Lewisburg WV. The large main house built in 1874 was used as a manse for a local church. The large colonial-style home boasts 17,522 sf having 4 bedrooms, 2 baths, kitchen and living room on upper floor. Lower level is conducive for entertaining, formal dining rooms and a conference room. A 4-bay garage has 1 apartment over half of it and another large room to incorporate into your needs. Approximately 12 apartments are available for rent and a house with 5 bedrooms, all which provide immediate income. Close to all amenities. This is such a unique property having MANY possibilities and plenty of parking.



Renick, WV - Well-built 1800 sq.ft. home with full basement offers 3 BR, 2 BA, FP, heat pump, fuel oil, and forced air wood stove. Detached garage is 900 sq. ft. with overhead workshop. Large barn, several outbuildings & large pond. The property has a variety of fruit trees, 72 acres of timber, 50 acres of crop/hay fields and 35 acres of pasture. Quiet & secluded with amazing views. **\$599,900**



Mill Point - Oh, the possibilities! Once was used as a church and still can be. Think of the possibilities, open floor plan can easily be converted into a home, a couple apartments or even an Air B&B. You are surrounded by beautiful mountains with Snowshoe Ski Resort right up the road. The walls and roof are already there awaiting for you to convert as you please. **\$69,500**



Blackberry Way - Make the Overlook at Greenbrier the place to build your new home. A 21.2 acre secluded lot for your privacy while you enjoy the nature of West Virginia and get away from it all. Close to Greenbrier State Forest, Greenbrier River Trail and Greenbrier River. **\$45,000.**



Richwood - A very nice 3 bedroom, 1 bath home with hardwood floors. Living room, eat-in kitchen and large utility room. All appliances convey including washer and dryer. Back yard has a pavilion with fireplace, stone wall and water fountain. Mature landscaping and white picket fence encompasses yard. **\$125,000.**

HOME STYLE
 REALTY & DESIGN

Asbury, WV 24901
 Jennifer Toler, Broker



Jerri Gillespie
(304) 646-4067



MLS 22-719 Caldwell - This home features long range views of the valley. Offering 4 bedrooms, and 4.5 baths. The large Kitchen has beautiful Cherry cabinets and double refrigerators for hosting family gatherings. Master bedroom features French door access to the deck. Finished lower level, security system, generator, two car garage with heated driveway! The Retreat is a gated community that includes access to clubhouse, spa, infinity pool and hot tub.



MLS 22-1167 Asbury - 3 BD, 2 BA log home is perched on top of the hill with magnificent views of the valley. 24.75 acres with 100x50 barn, perfect for your animals! 10-12 minutes from I64 for easy travel to Lewisburg or Beckley. Call to schedule an appointment!

Beavers Property Maintenance



*Proudly Serving Greenbrier County
With Over 10 Years Experience.*

- Driveways • Seal Coating
- Residential & Commercial Service
- Parking Lots • Crack Filling

LICENSED & INSURED

304-445-6118

EXCAVATING & CONTRACTING



RESIDENTIAL • COMMERCIAL • INDUSTRIAL

**Road Building & Site Work
Stone Hauling • Fill Dirt • Top Soil
Water & Sewer Lines • Basements
Hydro-Seeder • Pond Building**
ALL EXPERIENCED OPERATORS

Lynch Construction Co., Inc.

Over 70 Years of
Continuous Business

George N. Lynch, Founder

White Sulphur Springs, WV

304.536.1890

Shop 304.536.1895
WV001825 • Class A VA2701-030753A



THE EXPERIENCED CHOICE FOR YOUR CLOSING

304.520.3200

David G. Hammond
Attorney At Law

959 Washington Street West
Lewisburg, WV 24901

*Mention this ad and receive
a \$50 closing fee credit*

David G. Hammond, WV Bar 4843, Responsible Attorney

WANT RESULTS?



*SELL Your Home or Land in The Mountain Messenger's
Elegant & Integral Real Estate Resource*

*Properties and
Lifestyles*
MAGAZINE

Call Debra Smith 304-647-5724 Today, To Get Your Property Listed!



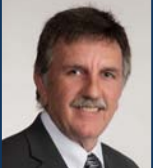
Jill Allman
304.646.0523



Jake Teubert
304.667.2697



Patti Ford
304.667.1100



Charles Weikel
304.646.5054



Sandra Hunsecker
304.667.9909



Jeff Owens
304.645.5349



Debbie Smith-Canterbury
304.667.3046



Greg Allman,
Broker
304.646.1500



1047 Washington Street East
Lewisburg, WV 24901
304.645.2255
GreenbrierRealEstateService.com



Christi Lynch
304.667.4193



Ty Donovan
304.646.1936



Marie Goodwin
304.667.4456



Selina Cahill
304.646.8624



Brian Miluk
304.667.7296



Trish Hoover
304.237.9140



Bobby McClintic
304.520.9957

List With Us!

Did the early Spring like weather last month have you thinking of making a move?

At Greenbrier Real Estate Service, you will not only receive the highest level of service from long-time industry professionals, but you also get:

- 🏠 Expert advice from agents who know and can navigate the real estate market
- 🏠 A well researched market analysis to determine your property's value
- 🏠 Ideas for making your property show best
- 🏠 Proven marketing plan to get your property seen quickly and by the most buyers
- 🏠 An advocate for you during the entire process

Contact us to hear all Greenbrier Real Estate Service can offer to help get your property SOLD!



Farms and Land



Residential



Commercial

For dedicated, caring, and professional REALTORS®,
call Greenbrier Real Estate Service!

304.645.2255

www.GreenbrierRealEstateService.com

