



Supplier Management

Supplier Performance

Assessment

# Performance Assessment

Suzano recognizes the importance of the performance of its suppliers to the **sustainability** of its business, which is why it incorporated into its management process a methodology for conducting **periodic assessments** that considers the aspects of **technical quality, financial, environment, safety and social**.



## Critical Suppliers

---

Are suppliers of items with controlled procurement: inputs, raw materials and services with the potential to cause **significant impacts** on product capacity and quality, the performance of processes, the safety and reliability of equipment, the environment and the health and safety of workers.



# Performance Assessment

## Criteria

---



Critical **suppliers** in the categories:

- Fixed services
- Forestry and industrial inputs and raw materials



The process is conducted **annually**.

## Requirements

---



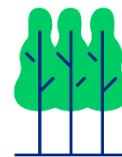
### Technical Quality

On-time performance, technical qualification, structuring of processes, technical support.



### Safety

SSO performance, safety dialogue, PPEs.



### Environment

Operating processes, environmental occurrences and impacts, service of occurrences and black smoke.



### Social

Social impacts and human rights.



### Risk Level

Labor, financial and economic information of the companies that provide fixed services.

# Performance Assessment *Financial Reporting*

The supplier's performance is assessed by calculating the **Supplier Performance Score (IDF)**. Suppliers with higher IDF's are recognized.

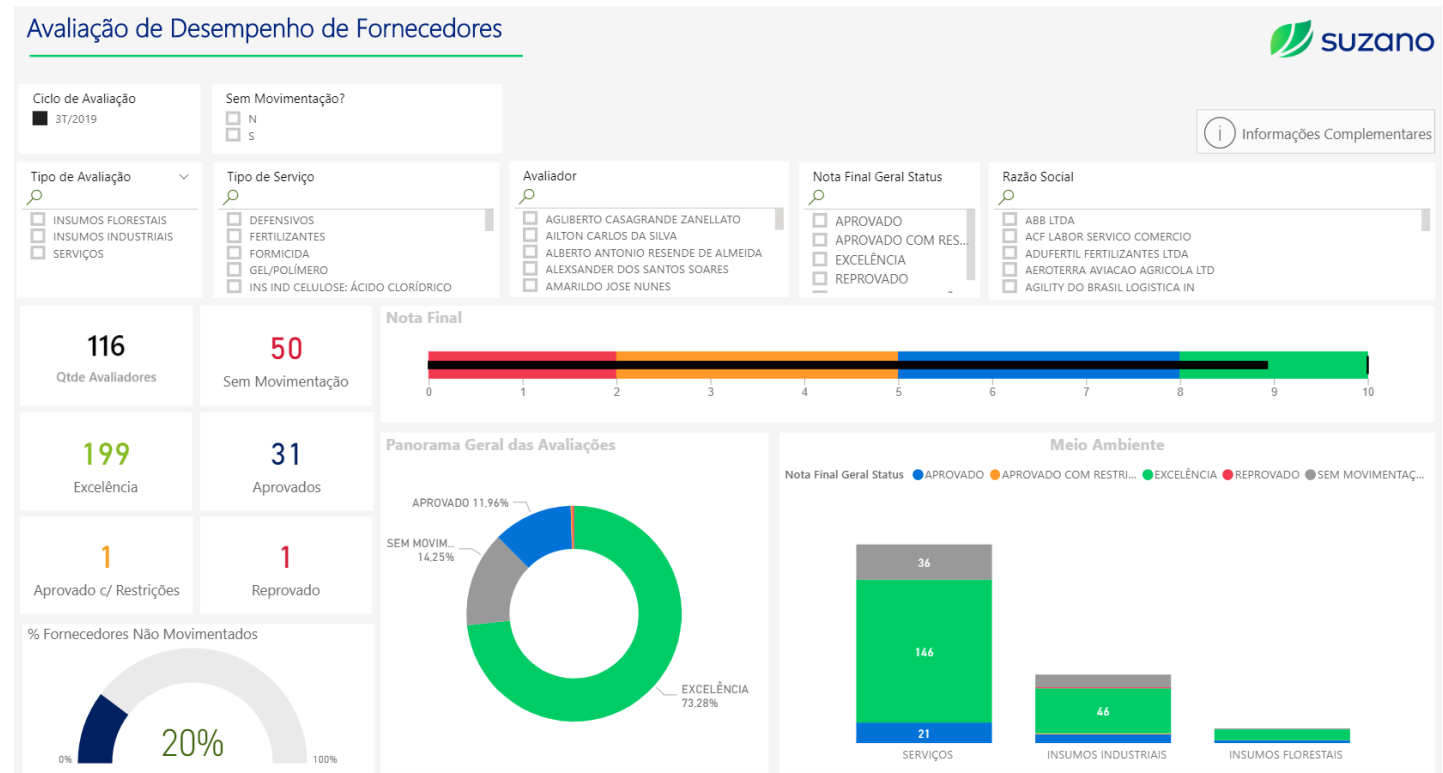
## IDF Results

**Excellence:** 9 to 10

**Approved:** 6 to 8

**Approved with Restrictions:** 3 to 5

**Rejected:** 0 to 2





[suzano.com.br](http://suzano.com.br)

*Thank you!*

Intelligence, Governance & Performance - Supplier Management

Daniela Datrino Camargo

Erick Lopes Cruz

Maria Vitória Calegari Alcântara