

1<sup>st</sup> EDITION | MAY 2021



Public Summary  
of the  
**Forest  
Management  
Plan**  
2020



Forestry  
Business Unit

Mato Grosso do Sul

# Summary

**03** About the  
Summary

**15** Forestry Business  
Unit São Paulo

**39** Environmental  
Management

**05** About  
Suzano

**18** Environmental  
Aspects

**52** Acknowledgment  
of and Respect  
for Professionals

**08** Where  
We Are

**23** Socioeconomic  
Aspects

**55** Social  
Management

**11** Forest  
Operation Area

**29** The Importance  
of Planted  
Forests

**66** Company's  
performance

**13** Forest  
Certification

**33** Forest  
Management

**70** Communication  
with  
Stakeholders

## Proceedings

Every year Suzano S.A. prepares its Forest Management Plan for the regions where it operates based on data from the previous year and according to results of monitoring and control or significant changes in forestry operations, responsibilities and socioeconomic or environmental conditions. **All images depicting unmasked people were taken before the COVID-19 pandemic.**

### Coordination

Sustainability

### Formatting and Design

Folks Comunicação  
Conteúdo  
folks.cc

### Cover

Turquoise-fronted amazon  
(*Amazona aestiva*)

### Images

Suzano Archive  
Eco Futuro  
Casa da Floresta  
FUNATURA  
Save Brasil

1.

# About the Summary



## 1. About the *Summary*

*In this Public Summary of the Forest Management Plan Suzano S.A. presents information on the Forestry Operations in the region, including responsibilities, available resources and strategies for the adoption of responsible forest management practices aimed at sustainable development.*

It is a synthesis of the Forest Management Plan, based on the main forest certifications: **FSC® – Forest Stewardship Council®, FSC-STD-BRA-01-2014 V1-1 PT FSC and NBR 14.789:2012 CERFLOR** (Forest Certification). Each system has its own principles and criteria.

Within the scope of forest certifications, Suzano S.A.'s Forestry Business Units are licensed under the following codes: FSC-C009927, FSC-C100704, FSC-C110130, FSC-C155943 and FSC-C118283.

In addition to the printed version, the Public Forest Management Plan Summary is emailed to the company's main relations: society, public authorities, neighbors and communities in its areas of operation, as well as employees and vendors.

**Have a pleasant reading!**

Additional Information, questions, feedback and suggestions that may arise from this reading should be sent to:

**[suzanoresponde@suzano.com.br](mailto:suzanoresponde@suzano.com.br)**

or calling

**0800 022 1727**





## 2. About *Suzano S.A.*



## 2. About **Suzano S.A.**

***Suzano S.A.** is a Brazilian company committed to being a global reference in the sustainable use of renewable resources.*

World Leader in the manufacturing of Eucalyptus pulp and one of the main paper manufacturer in Latin America, the company exports to over 100 countries and its products is part of the lives of over 2 billion people. With eleven operating plants and the joint operation Veracel, its installed capacity is 10.9 million tons of market pulp and 1.4 million tons of paper per year.

Suzano has approximately 36 thousand direct and indirect collaborators and has been investing in innovative solutions in eucalyptus planting for 97 years to allow the replacement of fossil fuels by raw materials from renewable sources. The company has the highest degrees of Corporate Governance with B3, from Brazil, and New York Stock Exchange (NYSE), in the USA, stocks where its shares are traded.

From supplies to a wide range of industries to everyday life products, we cultivate life with the notebook of the child learning how to read, with the diaper protecting the baby, with the eco-friendly coffee cup, with toilet papers and with the convenience of a sustainable packaging.



People who  
*inspire and  
transform*

We create  
and share  
*value*

It's only good  
for us if  
*it's good for  
the world*

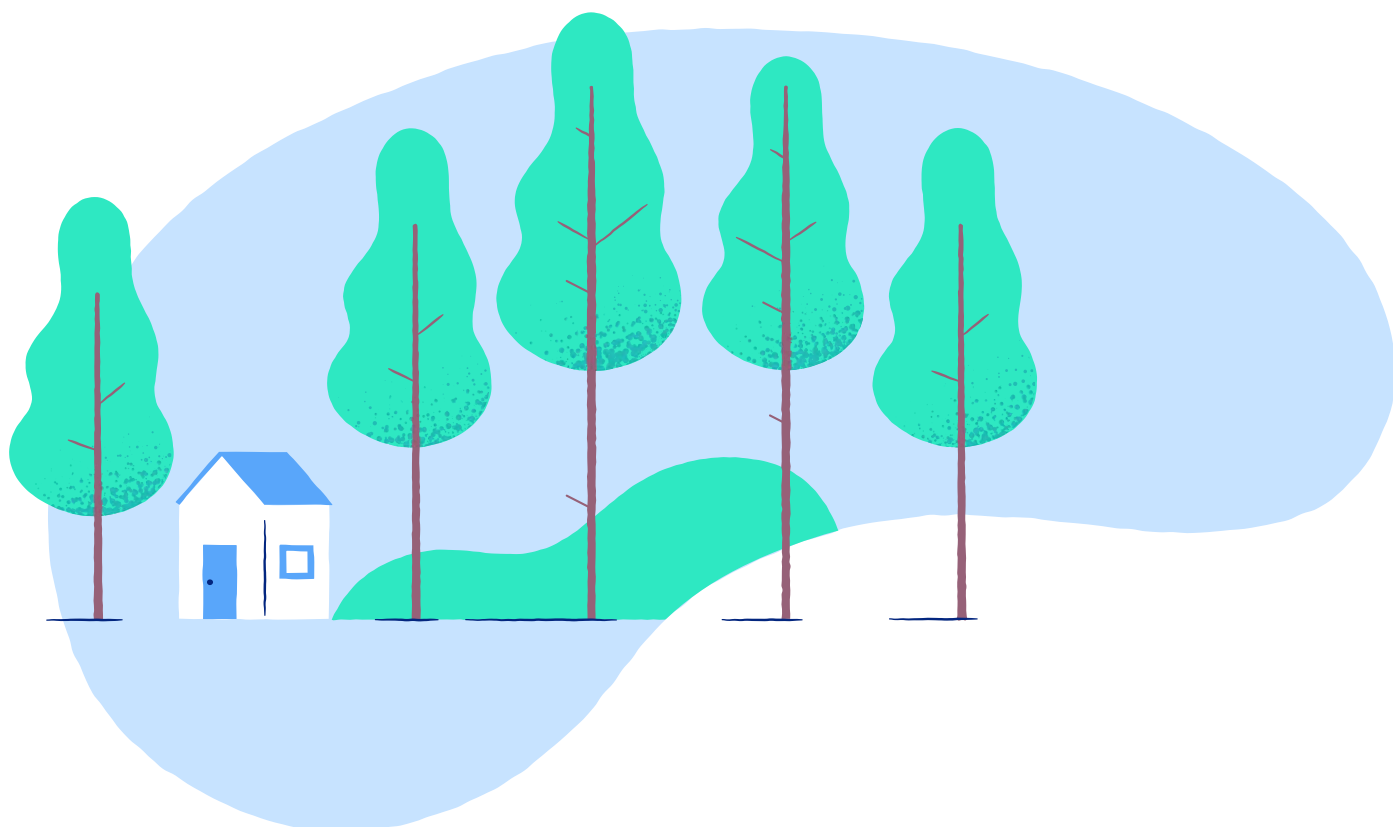
*We are a renewable basis company operating mainly in the segment of pulp and paper from Eucalyptus planting to supply companies all over the globe. Our portfolio is wide and diverse.*

We invest in innovation that arises from the protagonism of our collaborators, by using renewable raw materials and biotechnology. We use sustainable practices in everything we do, from fluff to lignin, from cellulose to tissue, from A4 sheets to cardboard for packaging.

We operate responsibly based on our expertise in Eucalyptus planting. This means that we always use the best global management practices in cropping - that is how we contribute for the maintenance of fertility and protection against erosion and degradation.



# 3. Where *We Are*

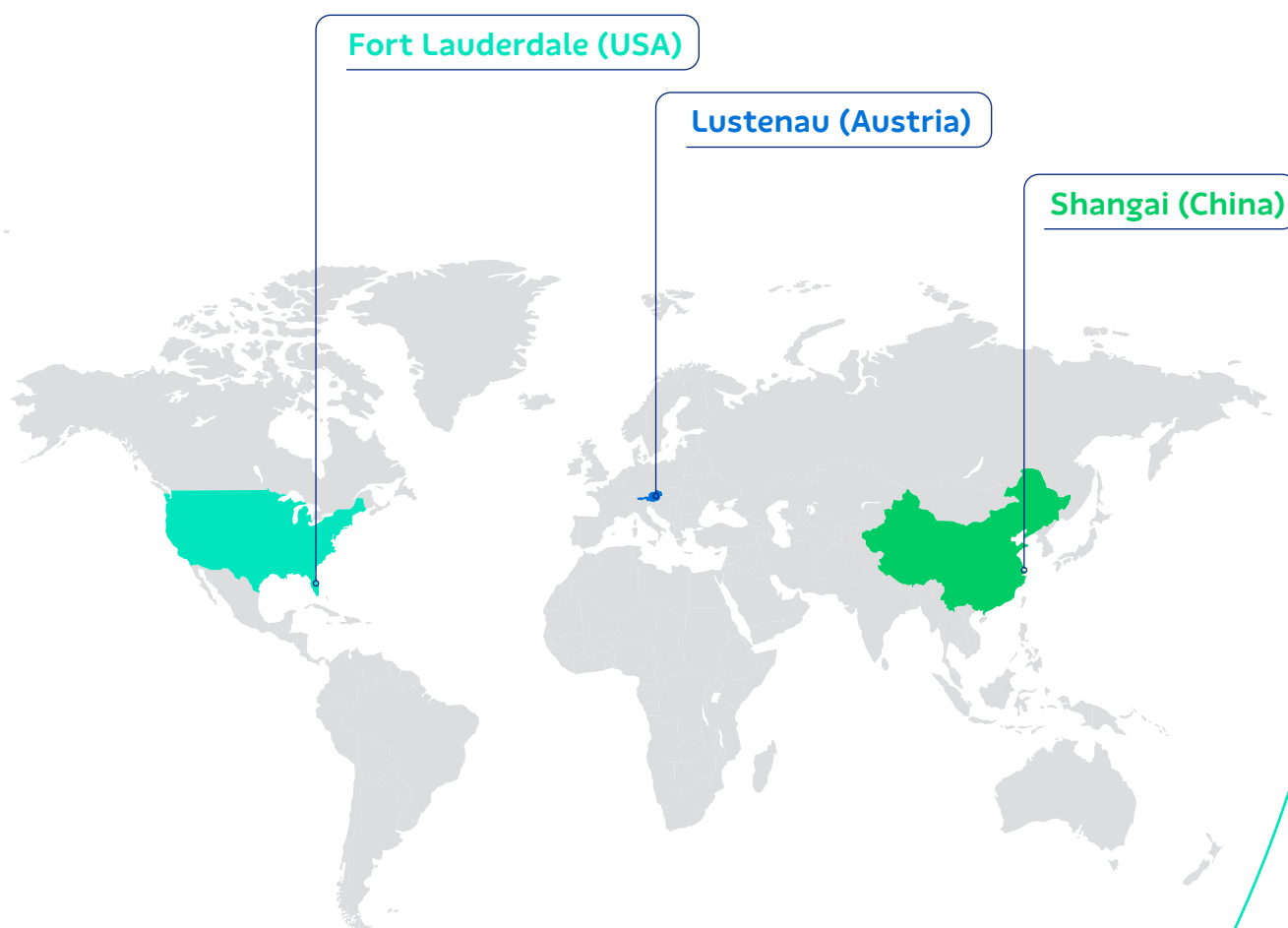




### 3. Where **We Are**

## Business offices

*We have business offices abroad in China, USA, Switzerland and Austria and subsidiaries in England and Argentina.*



## Distribution Centers

**United States (4)**

**Europe (6)**

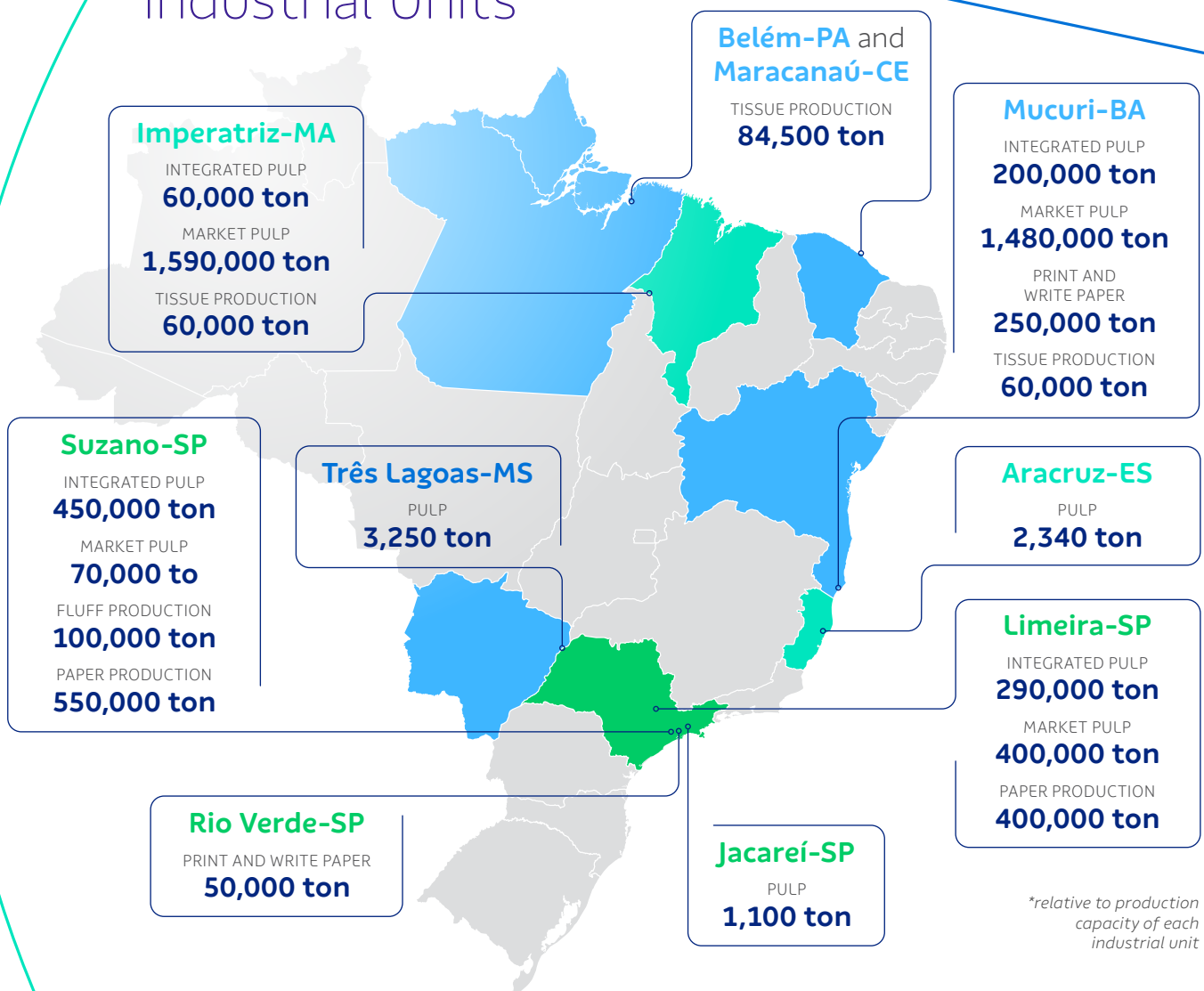
**Asia (2)**



Our organization includes administrative offices in Salvador (state of Bahia) and São Paulo (state of São Paulo), industrial plants and FuturaGene, responsible for the genetic development of forest crops and biofuels, with research laboratories in Israel and China.

*We provide products and services from 1.3 million hectares of planted forests and 960 thousand hectares of preserved forest, situated in the states of Bahia, Espírito Santo, Minas Gerais, São Paulo, Mato Grosso do Sul, Maranhão, Tocantins, Para and Piauí.*

## Industrial Units\*



## Terminals and Ports

Belmonte (BA)  
Caravelas (BA)  
Aracruz (ES)

Santos (SP)  
São Luís (MA)

4.

# Forest Operation Area



## 4. *Forest Operation* Area

### Forest assets with certification

*Suzano's forest competitiveness ensures its operation in different regions with adequate productivity.*

#### *Owned, Leased and Partnership Areas*

Business Units	Crop areas (ha)	Conservation (ha)	Infrastructure (ha)	Total (ha)
Aracruz / Mucuri	372,008	284,130	26,352	682,490
Imperatriz	225,352	297,336	17,123	539,811
Limeira / Suzano / Jacaré	230,572	130,551	17,528	378,651
Três Lagoas	391,162	162,500	18,583	572,245
<b>Total</b>	<b>1,219,094</b>	<b>874,517</b>	<b>79,586</b>	<b>2,173,197</b>

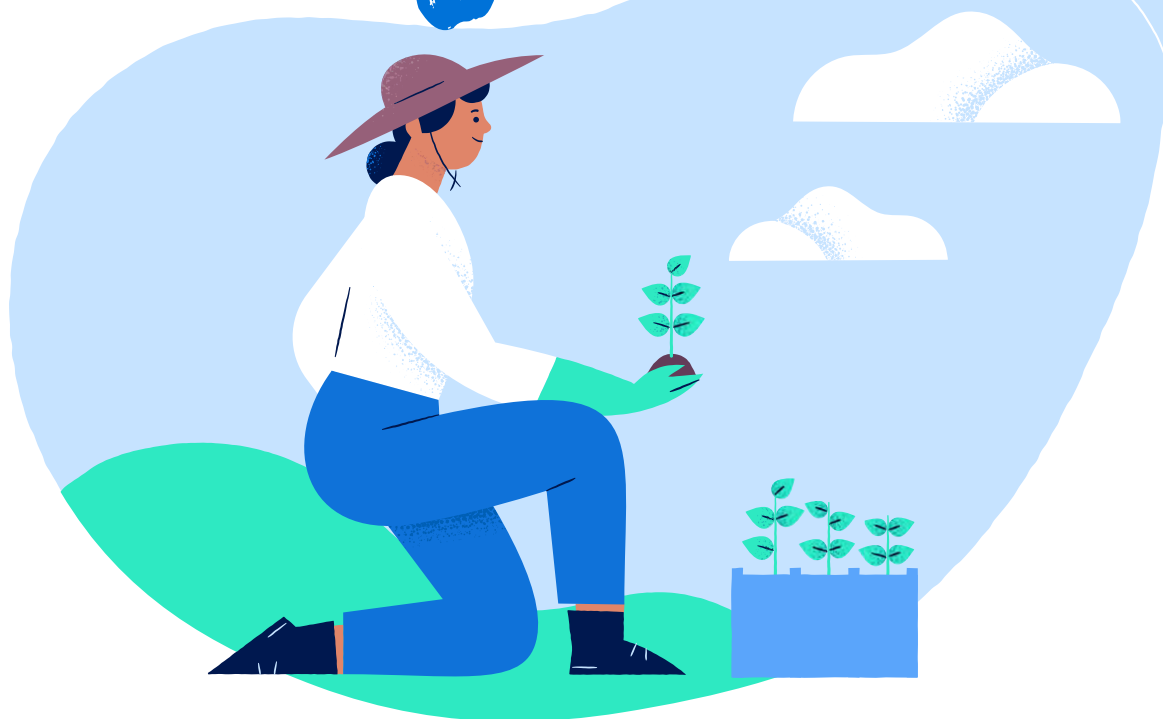
*Data Dec/2020, without the areas of Teresina, Urbano Santos, Market/Third parties and Sponsorships*

#### *Forest areas within the scope of FSC® and CERFLOR Certifications of each Forest Business Unit*

FBU	Certified areas FSC® and PEFC (ha)
Aracruz (ES)	215,750
Jacaré, Suzano and Limeira (SP)	349,750
Imperatriz (MA)	401,455
Mucuri (BA)	355,877
Três Lagoas (MS)	309,094
<b>Total Suzano S.A.</b>	<b>1,631,926</b>



# 5. Forest Certification



## 5. Forest *Certification*

**Suzano S.A.** states its commitment to conduct its Forest Management system according to the Principles and Criteria set by FSC® Certification and CERFLOR NBR 14.789 Forest Management, aiming to provide long-term business sustainability, continuous improvement of its activities and performance, as well as the adoption of environmentally correct and socially responsible practices.

To this end, the company has incorporated the environmental, social and economic dimensions into its forest management basic guidelines, as following:

- To seek technological innovations and to support research to apply the best forestry techniques in its forest production units.
- To contribute towards developing direct and indirect collaborators.
- To implement the Forest Production Plan based on environmental aspects, such as landscape and microbasins management, monitoring of fauna, maintenance of biodiversity corridors, and compliance with the applicable federal, state and city legislation, as well as international agreements of which Brazil is signatory.
- To contribute to maintenance or improvement of communities surrounding the forest management units through open dialog channels, participative follow-up of social indicators, sharing of relevant information and recreation areas or environmental education.

### Timber traceability

Every timber harvested from eucalyptus planting in certified areas have their traceability ensured (stedwardship chain of custody), i.e., origin guaranteed from planting to transportation for industry, thus eliminating the risk of a mix up with logs from uncertified areas (timber controlled by Due Diligence assessment).

Suzano is  
**certified by**  
FSC® and CERFLOR  
(NBR 14,789)



6.

# Forestry Business Unit

## *Mato Grosso do Sul*





## 6. Forestry Business Unit **Mato Grosso do Sul**

The **Unit Mato Grosso do Sul** operates in nine municipalities (Água Clara, Aparecida do Taboado, Bataguassu, Brasilândia, Inocência, Ribas do Rio Pardo, Santa Rita do Pardo, Selvíria and Três Lagoas) and is recognized for the development of responsible forest management practices.

Plantings are carried out in owned lands, through leasing contracts, or through partnerships with rural producers. With a forest basis of 466,366 hectares, of which, 135,728 hectares are destined to biodiversity conservation (data from Dec.2019), Suzano's forest management aims to combine eucalyptus cropping with the conservation of natural resources, technological innovation and respect to communities. All production is based on renewable planting of eucalyptus, aiming to supply the industrial complex of Tres Lagoas - MS.

All saplings used are produced with cloning technology and use the most advanced genetic basis for the production of forests destined to pulp production.

The adopted harvesting process respects the characteristics of the region and uses efficient systems that rely on high-end equipment.

The industrial plant operates within environmental control standards, with technology aimed at monitoring emissions, air and water quality, and the proper disposal of waste.

The FBU-MS encompasses a forest basis of

**466.366 ha,**

of which, about

**135.728 ha**

are destined to conservation.





*To ensure success in all phases of the process, the company constantly invests in research, technology, and professional training.*

Suzano employs a policy of recruiting candidates from the regions where it operates, provided that they meet the requirements for the job and apply on equivalent terms with other candidates. It is also the company's practice to train the workforce involving the communities, in partnership with universities and technical institutions.

### Areas of Operation in the Municipalities

Municipality	Area of the Municipality (ha)	Owned (ha)	Leased (ha)	Partnership (ha)	Planting (ha)	Conservation (ha)	Other Uses*	Total occupied area (ha)	Total occupied area (%)
Água Clara	780,921	2,792	16,503	0	19,295	12,838	948	33,081	4.24%
Ap. do Taboado	275,015	46	0	0	46	31	33	110	0.04%
Bataguassu	241,876	0	635	0	635	195	37	866	0.36%
Brasilândia	580,690	19,193	55,922	30,415	105,530	43,055	4,836	153,421	26.42%
Inocência	577,441	0	2,559	0	2,559	1,229	140	3,928	0.68%
Ribas do Rio Pardo	1,730,809	0	30,828	0	30,828	12,607	1,254	44,689	2.58%
Santa Rita do Pardo	614,307	0	9,848	0	9,848	4,532	572	14,952	2.43%
Selvíria	325,833	12,555	9,059	0	21,614	8,698	861	31,172	9.57%
Três Lagoas	1,020,695	18,090	78,756	27,054	123,900	52,543	7,705	184,147	18.04%
<b>Total</b>	<b>6,147,587</b>	<b>52,676</b>	<b>204,109</b>	<b>57,468</b>	<b>314,253</b>	<b>135,728</b>	<b>16,385</b>	<b>466,366</b>	<b>7.59%</b>

Source: Registry database Dec/2019

Municipalities areas - Source IBGE

(\*) Other uses: refers to roads, constructions, high voltage transmission network protective strips, etc.



# 7. Environmental *Aspects*





## 7. Environmental **Aspects**

*Forest areas and other native phytophysionomies found in the FBU-MS offer possibilities for the conservation of the local and regional biodiversity.*

### Soil, Weather and Hydrography

The region has mainly Latosol, Neosol and Argisol. Red Latosols predominate in the region, which is also the most commonly found in the state (from the North-Easternmost region of the state to the South, with a wide strip following Parana River).

*Weather is classified as tropical, with dry winter and humid summer. Annual rainfall between 1020 and 1300 mm, concentrated in the summer months, and dry during winter months (from April to October).*

The unit is located in the Parana River basin. The main water courses are the rivers Verde, Pardo, Sucuriu and Parana, which sets the boundaries between the states of Parana, Sao Paulo and Mato Grosso do Sul. The region also has several streams, creeks and lagoons.

The Unit is  
Located at the  
**Parana River  
basin**





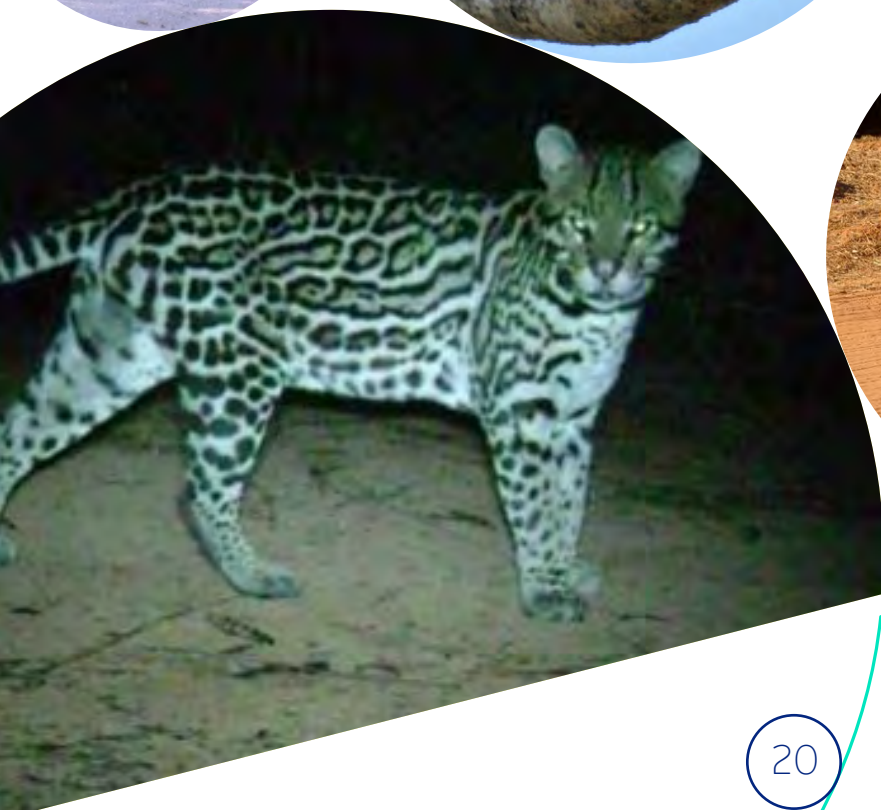
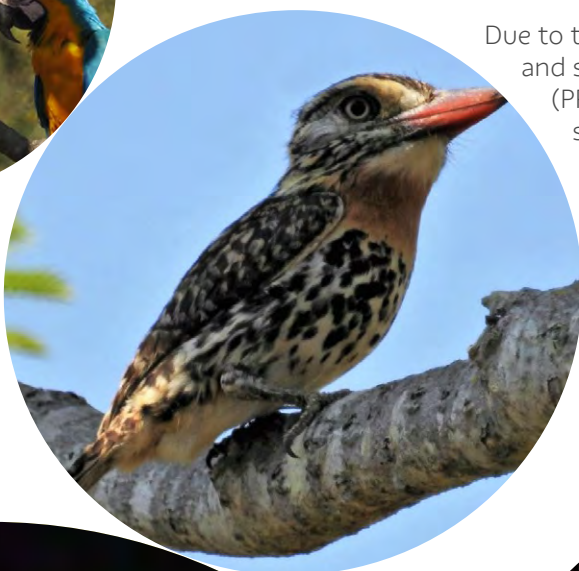
## Fauna and Flora

*Suzano's FBU-MS farms (Forest Business Unit Mato Grosso do Sul) are inserted into different forest cover mosaics and harbors several phytophysionomies of the Cerrado biome with some areas of the Atlantic forest and transition areas between the two biomes.*

In general, our farms have remaining areas capable of contributing with the conservation of several species, particularly those endemic to the biome or threatened.

Characterization of the natural environment in the areas where Suzano operates is done through surveillance of fauna and flora. In general, these studies aim to identify, randomly or systemically, local species of fauna and flora, allowing the identification of critical species (protected by law), the mapping of endemic, rare or threatened species habitat, and the identification of opportunities of more thorough studies, actions for restoration and improvement of environmental conditions for the fauna.

Due to the proximity to a large number of rivers and stretches of Permanent Preservation Areas (PPA) that crosses the farms, it is possible to spot species that point to a good degree of biodiversity conservation, such as the Ocelot (*Leopardus pardalis*) and the jaguar (*Panthera onca*). Those are predator cats that inhabit well preserved areas that allow the occurrence of species they prey upon, such as the red brocket (*Mazama americana*), the white lipped peccary (*Tayassu pecari*) and the tapir (*Tapirus terrestris*).





# 8. Socioeconomic *Aspects*



## 8. Socioeconomic Aspects

*According to IBGE (Brazilian Institute of Geography and Statistics) (2019), the state of Mato Grosso do Sul has 2.78 million people, with a demographic density of 6.9 inhab/km.*

The historical and geographical development of the microregion of Três Lagoas, located on the east portion of Mato Grosso do Sul (MS) is directly linked to cattle ranching. From 2007 on, this scenario began to change with the introduction of Eucalyptus planting occupying old pastures.

According to the Agricultural Census of 2006, extensive cattle ranching is notable in land use patterns in the municipalities where Suzano operates in Mato Grosso do Sul (Água Clara, Aparecida do Taboado, Bataguassu, Brasilândia, Campo Grande, Inocência, Ribas do Rio Pardo, Santa Rita do Pardo, Selvíria and Três Lagoas).

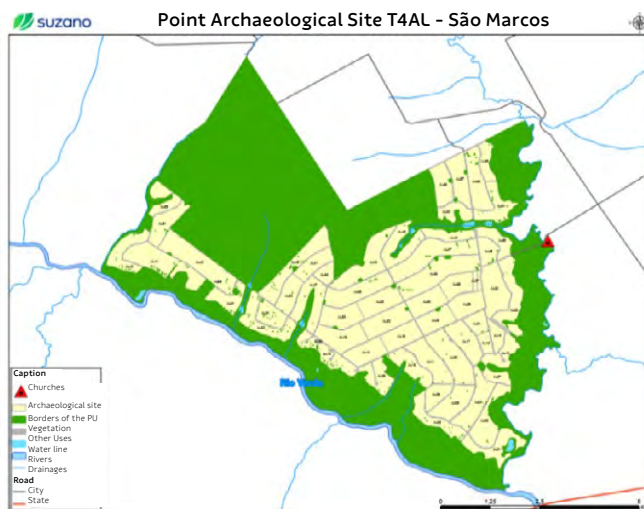
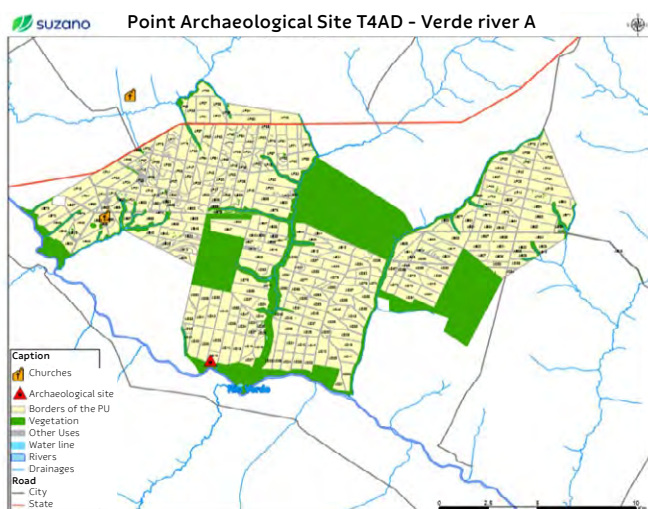
Pastures constitute, in average, 75% of the municipalities areas, followed by Forest, with 18%, plantations, with 5%, and the remaining areas occupied by betterments, lagoons, dams and unusable land for agriculture or cattle ranching.



## Archaeological Information

Suzano has conducted several studies to identify the presence of archaeological sites across its area of direct influence. As a result, archaeological remains and sites with ethnographic or historical/heritage interest were located along the Parana River and the Verde River basin.

The remains identified on Suzano's area were registered on IPHAN (National Institute of Historic and Artistic Heritage) as, for instance, the archaeological remains of Pombo River 3 (OM3) and Verde River 20 (VD20). The Verde River 20 remains, for instance, are found at an old area of gravel mining that, given its features, were used as source of materials for the manufacturing of lithic tools by pre-historic hunter-gatherers.







## Distribution of Suzano's farms, Conservation units and Management Units of Water Resources

*Conservation Units are legally recognized areas, with relevant natural features with the role of securing the representativeness of significant and ecologically viable samples of the different populations, habitats and ecosystems.*

The fragments of native vegetation and planted forest have an important role in the set of biodiversity conservation actions both locally and state-wide.

The areas operated by Suzano, with the techniques provided to protect fragments and manage commercial crops, have relevant positive effects on the neighboring conservation units because they shelter significant amounts of biodiversity and maintain the functionality of key biological and ecological processes.

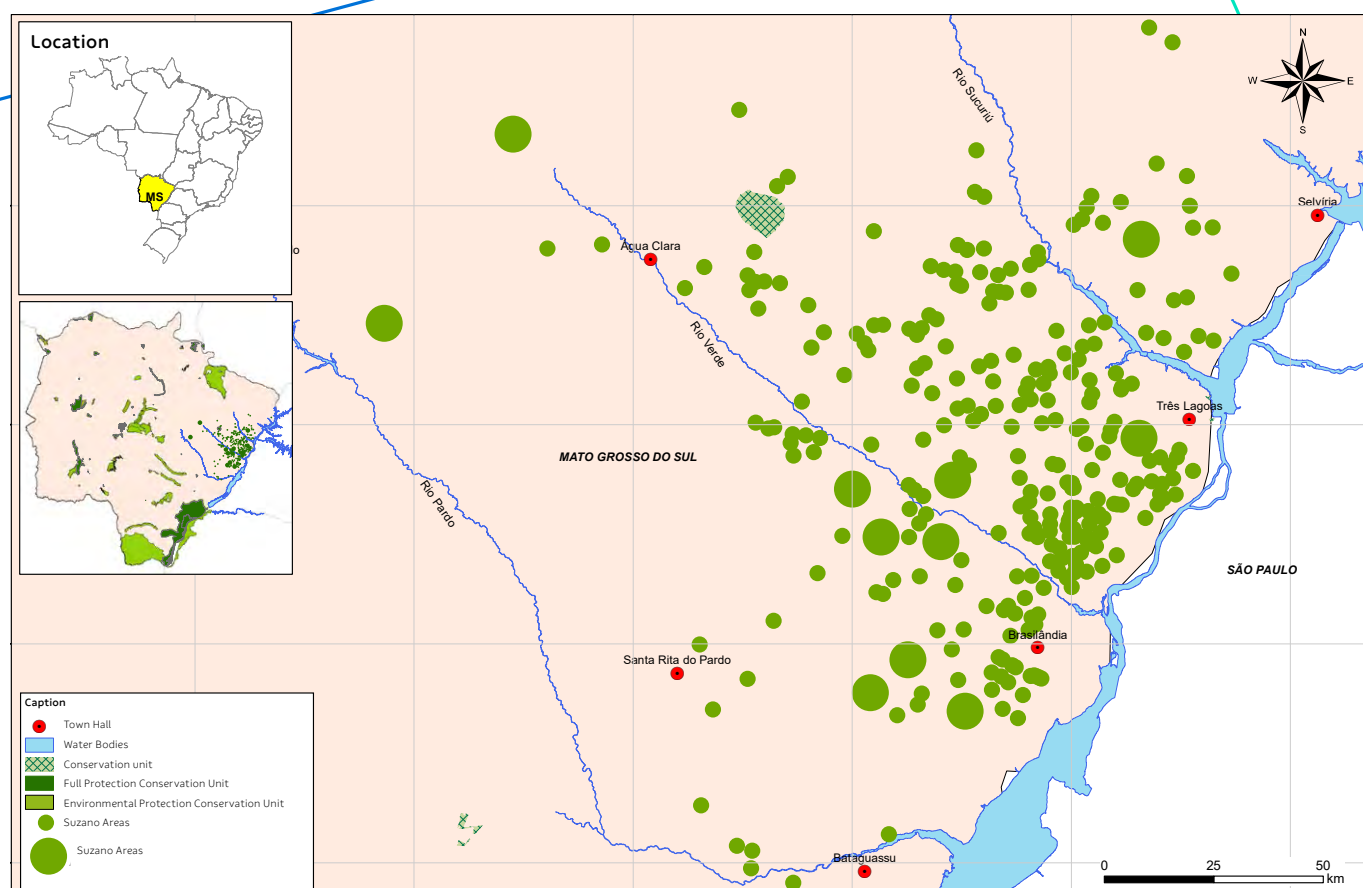
Furthermore, understanding where the company's areas are inserted relative to the river basins helps us to plan new implementation areas, and to maintain existing plantings.

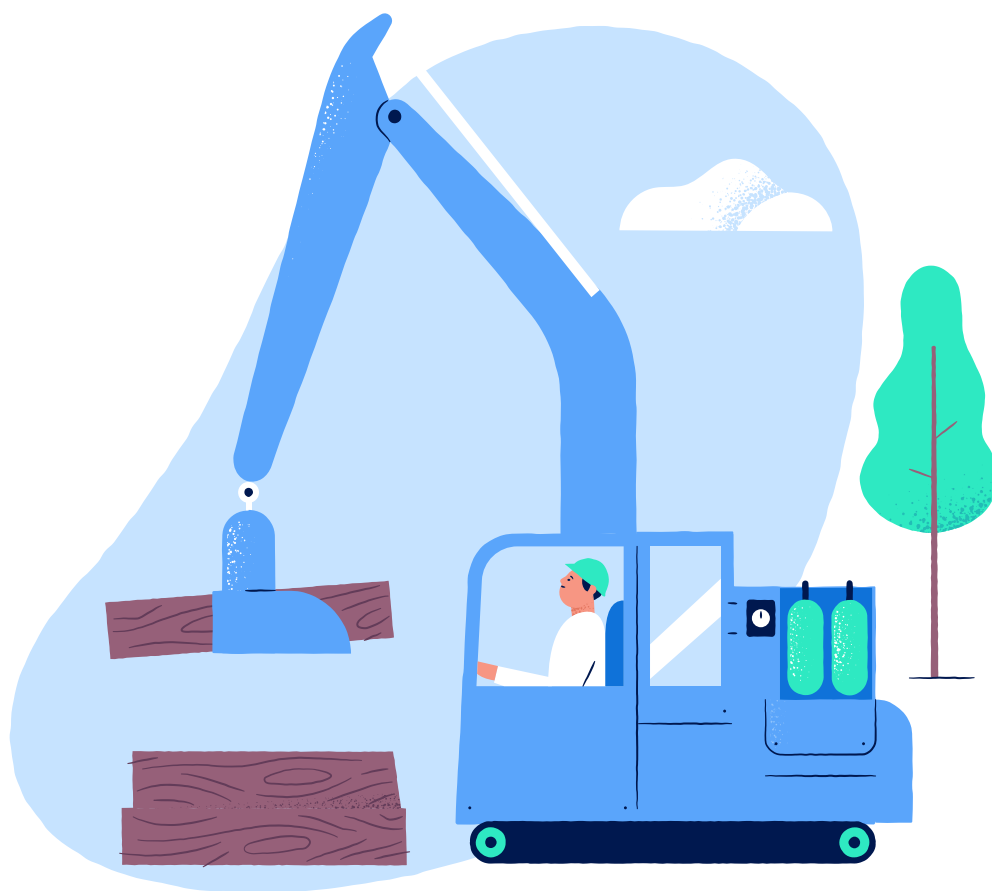




There are four Conservation Units in the operation region of FBU-MS:

1. Biological Reserve das Capivaras
2. Environmental Protection Area Jupiá
3. Natural Park do Pombo
4. Private Reserves of Natural Heritage Cisalpina





9.

# The Importance of *Planted Forests*



## 9. The Importance of *Planted Forests*

### What is **Forest Management**?

*Forest Management is the administration of forest resources with the aim of achieving economic and social benefits aligned with the mechanisms for ecosystem support by employing the best practices of Eucalyptus farming. The goal is to reach high productivity in balance with the environment conservation.*

#### **Objective**

The goal of Suzano's forest management is to supply the industrial Units with Eucalyptus timber, according to the parameters described in the following, either in short or long terms.

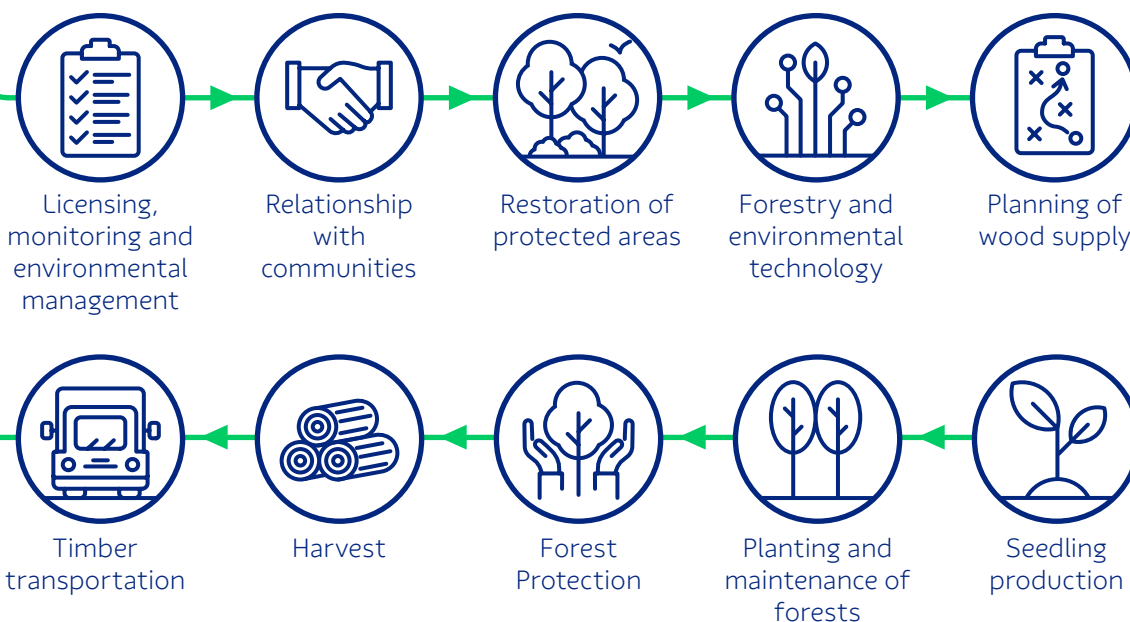
- Availability and rational use of areas for the cultivation of Eucalyptus through directives and procedures for the purchase and lease of land.
- Development of new genetic material and monitoring of soil nutritional levels, pests and others, defined in operational routines and specific research projects.
- Standardization, reporting and continuous improvement of procedures related to seedling production, implementation, restoration, forestry practices, construction and conservation of roads, harvesting, and forestry products transportation.
- Outlining of programs concerning the environment, healthcare and safety at work, as well as socioenvironmental aspects, always in compliance with the applicable law.

### *Eucalyptus*

- Is an exotic species (not native from Brazil), like coffee, corn, soy, sugar cane and several other crops widely cultivated in the country.
- With proper management, water consumption is similar to that of native forests and its roots are kept away from the water table.
- It is harvested in approximately seven years and can be cultivated in low fertility land.
- With proper management, it provides protection for biodiversity as shown by the biodiversity surveillance results in Suzano's areas.
- Of rapid growth, Eucalyptus helps to absorb carbon dioxide from the atmosphere, giving back pure oxygen. The role of Eucalyptus forests is key to humankind efforts to neutralize greenhouse gases, responsible for the Earth's warming.



## Forest management activities



Average annual production of plantings is approximately

**35 m<sup>3</sup>/ha/year**

### Compliance with the law

Suzano is always up-to-date with the applicable environmental, labor and tax laws with preliminary surveys carried out by an environmental law consulting firm.

### Managed forest resources

To supply the demands of the industry for eucalyptus timber, we rely on crops of the genus *Eucalyptus*, which encompasses more than 600 species that are adapted to many different soil and weather conditions.

Eucalyptus originates from Australia and Indonesia. It was chosen due to its higher potential for timber production for pulp when compared to other forestry species and due to its adaptability to the environmental conditions in Brazil, including soil and weather.





## Technology and Innovation

*Suzano maintains advanced Technology Centers that develop studies and research on forestry and industry. These activities aim to a consistent enhancement of its operations and technological innovations, focusing on the company's sustainability.*

Regarding forestry, the Technology Center works mainly on Classical Genetic Improvement, Forest Protection, Forest Management, Ecophysiology and Biotechnology, defining models of planted forest management that support an increase in forest biomass productivity.

Suzano's plantings are mostly formed by hybrids obtained from the crossbreeding of *Eucalyptus grandis* and *Eucalyptus urophylla*.

Those species were selected because they are better adapted to the local soil and weather conditions following several cycles of improvement and research. Currently, the tree is harvested in six years in average, varying from five to seven years. After the first harvest, the area is managed for a new planting or for regrowth.

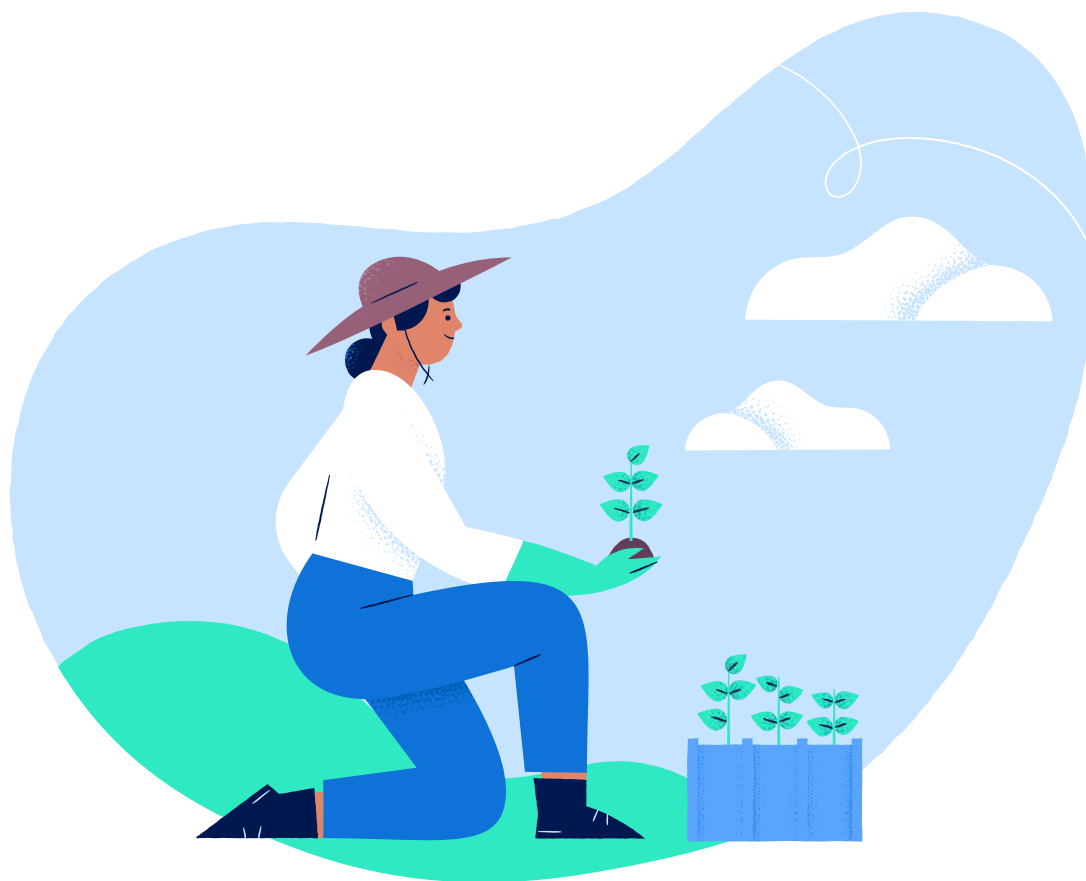


## Partnerships

Suzano develops studies and research in collaboration with outstanding public and private institutions in Brazil and abroad. All projects and activities seek to meet market and operational demands, legal requirements, new tendencies, technologies and products of internal research strategies.

As a result, Suzano stands out in developing and recommending new genetic materials, in monitoring and recommending forest management practices and fertilization, in using new technologies in forest protection and more sustainable production practices. In addition to the results highlighted in forestry, Suzano also sustains solid and robust results in industrial and new businesses research and development.





10.  
Forest  
*Management*



## 10. Forest Management

### Forest Protection

*The company continuously monitor for pests, diseases and weed with regular field visits.*

The objective is the early detection of pests and weeds, and the assessment of competition level of Eucalyptus with weed. All information gathered are used to help decisions on control and to define the method to be adopted, seeking for the rational use of pesticides.

Suzano also prioritizes the use of biological control agents in occasional pest management, and selection and planting of clones resistant to the main crop diseases, complementing the integrated management.

### Forest Inventory

On its first 120 days, the forest is monitored through a Qualitative Inventory that allows inferences on the quality and homogeneity of plantings. In regrowth forests, performance is monitored at 90 and 180 days upon harvesting also through qualitative forest inventory.

The Forest Inventory uses sampling techniques to gather data that allow an estimate of the planting volume per hectare and per tree for a given age. This information is used in the decision making process on the best harvest time. It is also important for the proper planning of timber supply to the Industrial Unit.

### Planning

Planting and harvesting planning for timber supply comprises short, medium and long term achievements, aiming at the best utilization of natural resources and minimizing occasional socioenvironmental impacts.

Forest planning keeps track of ordering to ensure the industry supply. The proper management of planted forests favors planting productivity and contributes to disease and pest control, biodiversity conservation, and protection of springs and ecosystem services - creating a virtuous cycle.

### Development and Operational Excellence

*This area is responsible for the development and transfer of mechanization and digitalization technology to forest processes.*

Seeks the continuous improvement of forestry activities, harvest and logistics, with particular interest in routine management, quality and productivity of operations, as well as personnel qualification, thus promoting safety, product quality, high productivity, feasible costs for forestry activities and environmental conservation.

FBU-MS has an installed production capacity of approximately

**12 million**  
seedlings per year  
with final yield of  
**70%**

## Seedling Production

The plant nursery is where the eucalyptus seedlings are produced and managed through several stages until reaching the proper size to be planted in the field.

The seedling development time ranges from 90 to 120 days. To produce seedlings of outstanding quality, the distance between them needs to be increased when they reach 60 days so that they can grow healthier.



## Planting

The main activities related to trees planting are: pre-planting mechanized chemical cleaning, mechanized soil tillage, mechanized fertilization, planting, mechanized and semi-mechanized irrigation, and replanting.

Planting can be carried out in reform areas (where an Eucalyptus planting already exists), or in implantation areas (where there is no Eucalyptus planting). Suzano only implants forest in areas not covered by native forests.

Soil is prepared using minimum tillage, which consists in preparing strips of soil in the planting line. About 70% of the land remains undisturbed, which favors the maintenance of soil characteristics, avoiding erosion and loss of organic matter.



In 2020, FBU-MS acquired  
**564 ha (implantation),**  
**31,263 ha (renovation)** and  
**11,253 ha (regrowth),** totaling  
**43.080 ha**



In 2019, the annual harvest volume was

**11,426,159.48 m<sup>3</sup>**

## Forest Maintenance

This stage consists in a set of activities carried out between planting and harvest (5 to 7 years) to ensure growth and productivity.

The main forest maintenance activities are: manual or mechanical mowing, chemical or mechanical weeding, fertilizing, control of leafcutter ants, prevention of forest fire and diseases and pest control.

## Harvest

As soon as the forest reaches its ideal point, timbers are harvested to supply the industrial plant. Harvest encompasses all the processes from tree harvest to the disposition of logs (cutting, forwarding, stacking and fueling), up to the point where they can be transported by trucks or any other transportation mode.

During harvest, eucalyptus trees are cut toward the center of the plot, avoiding any possible damage to the native forest.

## Trucks equipped with telemetry

Our fleet is equipped with telemetry to monitor operations, distribution and positioning of the trucks on roads and farms, to control loading and unloading, and to support our partners on the management of operation safety, such as monitoring the drivers working hours and detecting occasional violations of speed limits.

With this system in place, Suzano strengthens the culture of daily routine management along with partner companies in logistics, thus maximizing personnel safety standards and operational efficiency based on reliable data.

## Timber Transportation

Forest Logistics main responsibility is to transport timber from the forest areas to the Industrial Units. The harvested timbers are transported according to the Annual Transportation Planning.

Based on this plan, we define shipments, routes, and transport modal, considering all requirements established on the operational procedures. This unit has the six trailer-trucks, an innovation implemented in 2019.

The routes for timber transportation are defined in agreement with Suzano's Sustainability sector in order to minimize the possible impacts of forestry activities on the neighboring communities.

The annual volume of timber transported to the industry in 2019 was

**10,450,000 m<sup>3</sup>**



Suzano is  
committed to

**Health  
and Safety**



## Road Networks - Roads

The road network in the forest area comprises municipal and state roads, arterial, collectors and firebreaks, whose maintenance is defined according to the company's internal criteria to secure forestry operations and avoid erosive processes in the conservation areas.

- Drainage works, such as containment boxes, are built to store rain water and avoid erosion on the roads.
- Existing roads are repaired and new roads can be opened to improve operation quality and safety.
- Firebreaks are kept to secure the access of fire brigade teams.

## Moistening of Roads

To keep the road wet, the company uses a tank truck. The goal is to reduce dust around communities and settlements caused by the traffic of trucks that transport timber to the company.

## Road Safety

*Suzano respects and values  
its professionals.*

Therefore, health and safety are the company's permanent commitment. Suzano maintains a set of rules that guides its employees and the carriers' employees into safer driving habits, protecting everyone's lives.





# Forest Integrity

*Suzano's professionals focus largely on prevention and control of wildfires.*

That is why the company provides continuous training to its brigade teams that are not only apt to monitor, but also act as support to fight fire in neighboring farms.

Suzano invests in awareness raising, sharing informative folders that address the dangers of wildfires.

We rely on trained fire brigade teams, trucks and surveillance towers available to respond to any possible fire outbreaks.

The program Live Forest aims to raise awareness among collaborators (employees and suppliers), partners and surrounding communities about the impacts and dangers of fire, how to avoid it and how to act when a fire outbreak is spotted.

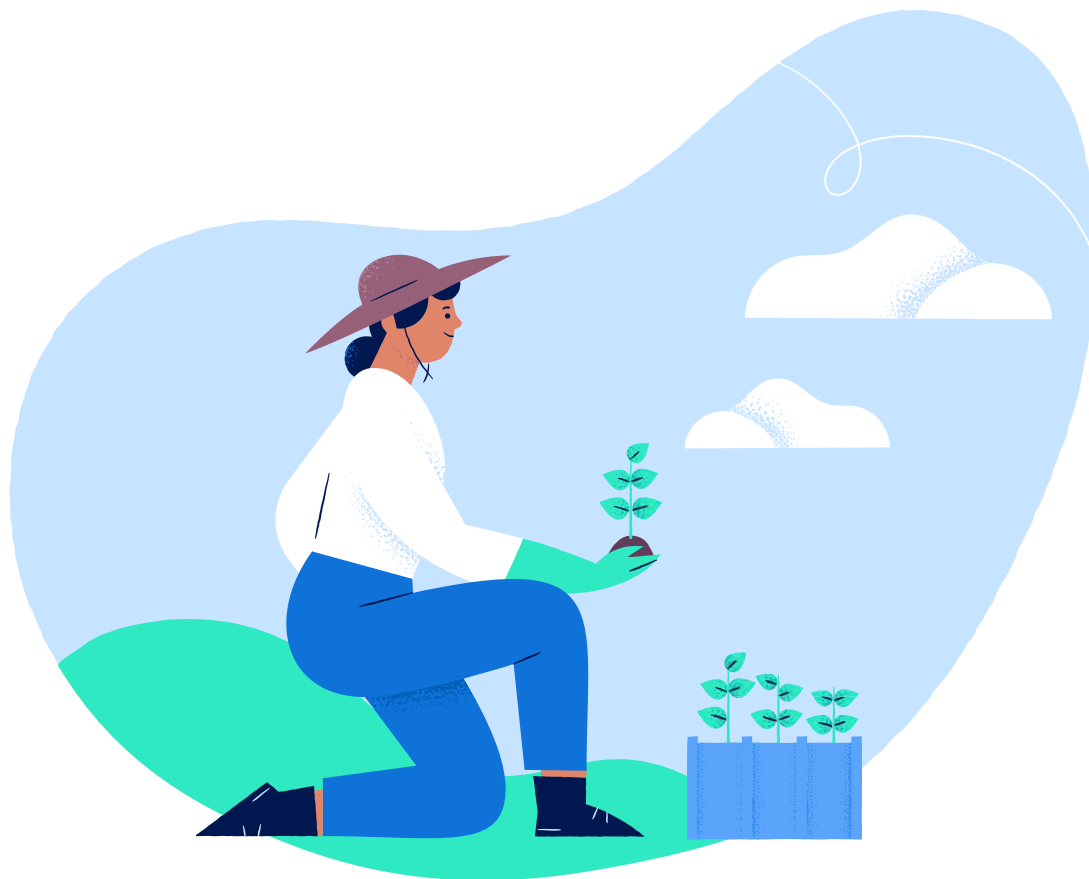
Our planted forests and native forest areas are systemically surveyed and any event, whether fire, littering, trespassing, blocking of watercourses, among others, are monitored and documented.

FBU-MS has an Electronic Fire Detection System that comprises surveillance towers with 360º view distributed across the company's areas and operated from a monitoring center. This system provides over 95% coverage of the forest, including planted and conservation areas.



## Live Forest Program

raises awareness among collaborators and community on the impacts and dangers of fire



# 11. Forest Management

## 11.Environmental *Management*

### High Conservation Value Areas

*Every forest has values or environmental and social functions beyond its productive value, such as fauna and flora and their habitats, protection of water resources, among others.*

When the values are considered extraordinary, the forest can be classified as High Conservation Value (HCV Resource Network, 2007), and are targeted by Suzano's management to maintain or improve its attributes.

The company has used as a reference the General Guide for Identification of High Conservation Value, edited in 2018, to define the features criteria.

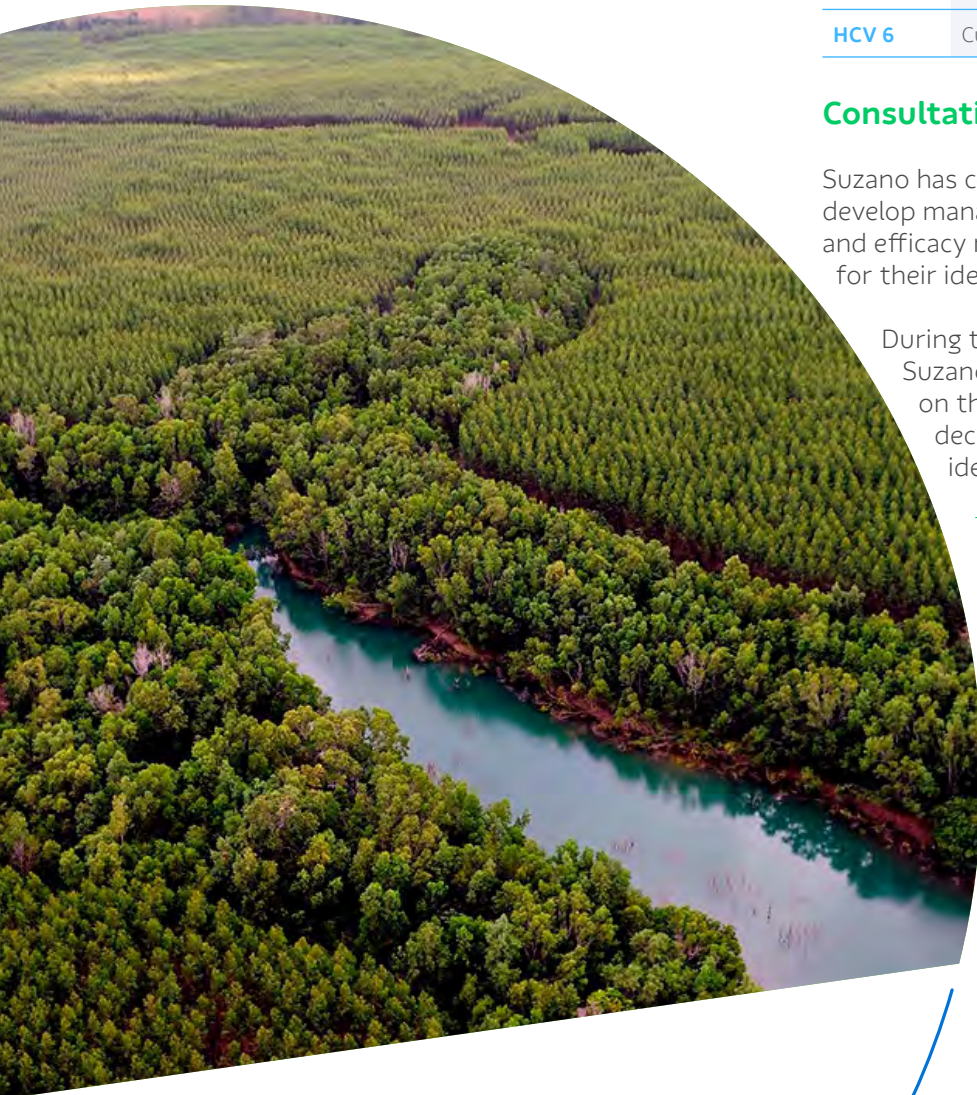
Value	Definition
HCV 1	Diversity of species
HCV 2	Ecosystems and mosaics on the landscape scale
HCV 3	Ecosystems and Habitats
HCV 4	Critical environmental services
HCV 5	Communities needs
HCV 6	Cultural values

#### Consultation of Stakeholders

Suzano has consulted its stakeholders in order to develop management regimes for the maintenance and efficacy review of HCVs, according to the criteria for their identification.

During the preparation of the diagnosis, Suzano consulted researchers and specialists on their areas of expertise to ensure safe decisions were taken concerning the proper identification and management of HCVs.

*This survey has identified four forest fragments as HCVs, where species of fauna and flora are found in significant number, diversity and relevance for conservation.*



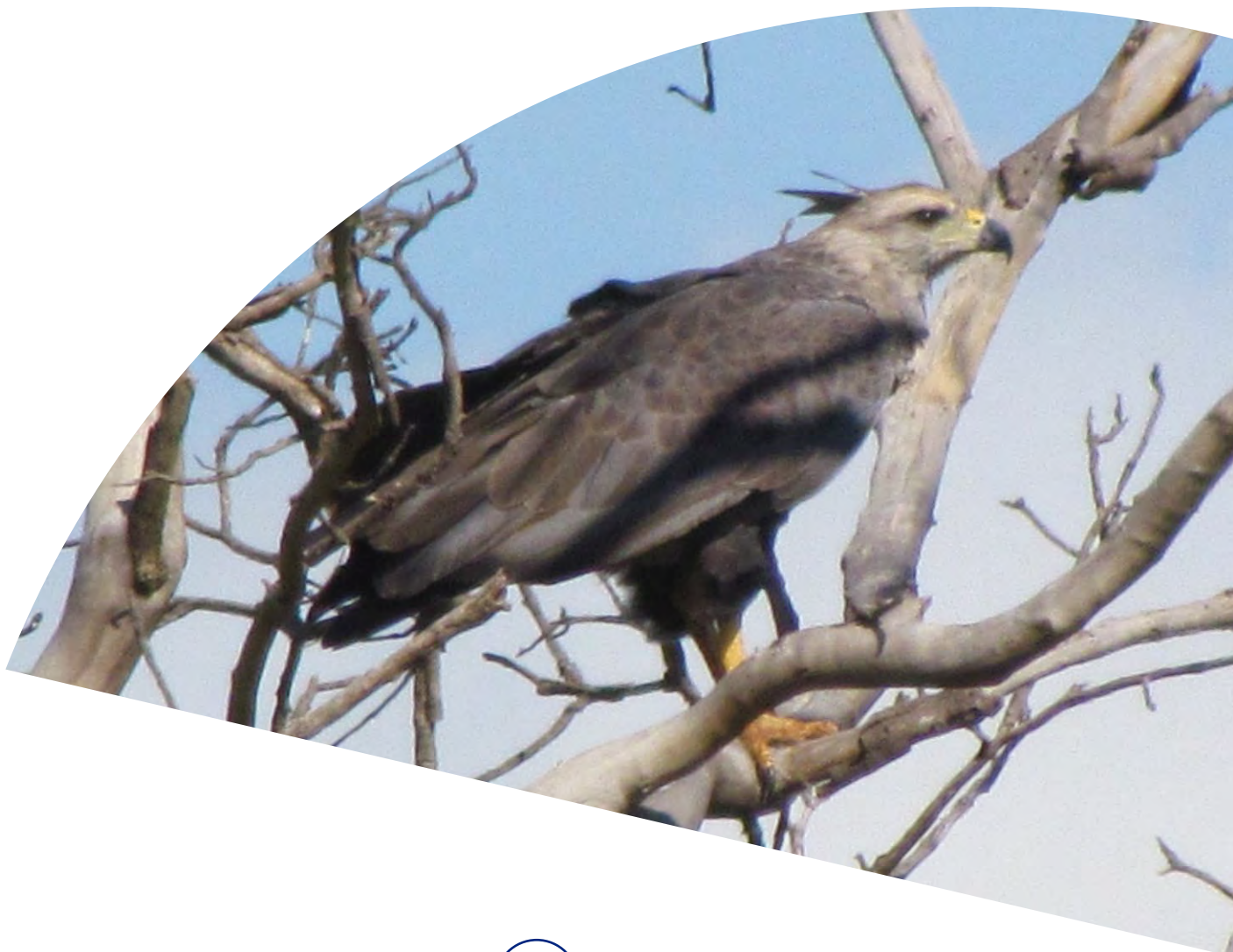


# Measures of Protection and Monitoring Actions in the HCVs

Area/ Location	Area (ha)	HCV (attribute)	Main threats	Some measures of protection	Some monitoring actions
Barra do Moeda	2,015	1 and 2	<ul style="list-style-type: none"> <li>Operational Damage</li> <li>Wildfires</li> <li>Illegal activities (hunting and capture of animals, plant species exploration)</li> <li>Disturbance of fauna during harvest</li> <li>Roadkills</li> <li>Deforestation</li> <li>Isolation due to fragmentation</li> <li>Invasive species</li> <li>Loss of rare or endangered species</li> </ul>	<ul style="list-style-type: none"> <li>Microplanning of Forest Operations</li> <li>Socioenvironmental Recommendations</li> <li>Environmental Training of employees and community</li> <li>Emergency Control Program and Fire fighting</li> <li>Asset surveillance, Mosaic Planting</li> <li>Environmental restoration</li> </ul>	<ul style="list-style-type: none"> <li>Monitoring prior to and after Operation</li> <li>Registry database update</li> <li>Monitoring of fauna and flora</li> <li>Monitoring of Socioenvironmental events</li> <li>Annual reports of HCVs</li> <li>Critical analysis</li> </ul>
Rio Verde A	1,562	2	<ul style="list-style-type: none"> <li>Wildfires</li> <li>Illegal activities (hunting and capture of animals, plant species exploration)</li> <li>Deforestation</li> <li>Isolation due to fragmentation</li> <li>Invasive species</li> </ul>	<ul style="list-style-type: none"> <li>Microplanning of Forest Operations</li> <li>Socioenvironmental Recommendations</li> <li>Environmental Training of employees and community</li> <li>Emergency Control Program and Fire fighting</li> <li>Asset surveillance</li> <li>Mosaic Planting</li> <li>Environmental restoration</li> </ul>	<ul style="list-style-type: none"> <li>Monitoring prior to and after Operation</li> <li>Registry database update</li> <li>Monitoring of fauna and flora</li> <li>Monitoring of Socioenvironmental events</li> <li>Annual reports of HCVs</li> <li>Critical analysis</li> </ul>
Matão	1,231	1	<ul style="list-style-type: none"> <li>Operational Damage</li> <li>Wildfires</li> <li>Illegal activities (hunting and capture of animals, plant species exploration)</li> <li>Disturbance of fauna during harvest</li> <li>Roadkills</li> <li>Deforestation</li> <li>Isolation due to fragmentation</li> <li>Invasive species</li> <li>Loss of rare or endangered species</li> </ul>	<ul style="list-style-type: none"> <li>Microplanning of Forest Operations</li> <li>Socioenvironmental Recommendations</li> <li>Environmental Training of employees and community</li> <li>Emergency Control Program and Fire fighting</li> <li>Asset surveillance</li> <li>Mosaic Planting</li> <li>Integrated System for Forest Protection</li> <li>Environmental restoration</li> </ul>	<ul style="list-style-type: none"> <li>Monitoring prior to and after Operation</li> <li>Registry database update</li> <li>Monitoring of fauna and flora</li> <li>Monitoring of Socioenvironmental events</li> <li>Annual reports of HCVs</li> <li>Critical analysis</li> <li>Mosaic harvest</li> </ul>
Matão (São Judas Tadeu Chapel)	-	6	Deterioration of the building	<ul style="list-style-type: none"> <li>Building maintenance</li> <li>Asset surveillance</li> </ul>	<ul style="list-style-type: none"> <li>Monitoring of Socioenvironmental events</li> <li>Annual reports of HCVs</li> <li>Critical analysis</li> </ul>

Area/ Location	Area (ha)	HCV (attribute)	Main threats	Some measures of protection	Some monitoring actions
<b>Abasto</b>	2,160	1	<ul style="list-style-type: none"> <li>• Operational damage</li> <li>• Wildfires</li> <li>• Illegal activities (hunting and capture of animals, plant species exploration)</li> <li>• Disturbance of fauna during harvest</li> <li>• Roadkills</li> <li>• Deforestation</li> <li>• Isolation due to fragmentation</li> <li>• Invasive species</li> <li>• Loss of rare or endangered species</li> </ul>	<ul style="list-style-type: none"> <li>• Microplanning of Forest Operations</li> <li>• Socioenvironmental Recommendations</li> <li>• Environmental Training of employees and community</li> <li>• Emergency Control Program and Fire fighting</li> <li>• Asset surveillance</li> <li>• Mosaic Planting</li> <li>• Environmental restoration</li> </ul>	<ul style="list-style-type: none"> <li>• Monitoring prior to and after Operation</li> <li>• Registry database update</li> <li>• Monitoring of fauna and flora</li> <li>• Monitoring of Socioenvironmental events</li> <li>• Annual reports of HCVs</li> <li>• Critical analysis</li> <li>• Mosaic harvest</li> </ul>
<b>Total</b>	<b>6,968</b>				

Source: SUZANO MS, 2021.



# Biodiversity management

*Suzano understands Biodiversity Monitoring as the supervision of development and changes in the landscapes and components and parameters of fauna and flora, aiming to assess the effects of forest management on the environment.*

## Fauna and Flora

The primary data consist of information gathered in previous monitoring that complement the primary data gathered in the field in Suzano's areas.

The Biodiversity Monitoring Program encompasses nine farms in the FBU-MS (Abasto, Barra do Moeda, Brasileira, Duas Maria, Formosa, Matão, Rio Verde A, Vista Alegre and Campo Limpo).

Blue-and-yellow macaw  
(*Ara ararauna*)

In the FBU's current database, birds are represented by 395 species. The database's total number of species is 1,376 including fauna and flora.

With the survey of fauna and flora in the company's areas, it is possible to establish indicators of environmental status. Monitoring includes surveying, demarcation, restoration, and conservation of the areas, allowing continuous learning based on the improvement of environmental management techniques, thus contributing with the local biodiversity conservation.

The last monitoring of native plant species revealed 17 new species, a 3% increase in the total number of species recorded so far.

## Species recorded up to the last monitoring



**395**

Birds



**53**

Fish



**136**

Arthropods



**82**

Mammals



**62**

Reptiles



**607**

Plants



**41**

Amphibian



The chart below show the species recorded in our monitoring, organized according to the level of risk of extinction in the IUCN Red List and the National List (IBAMA).

Class	Critically Endangered <sup>1</sup>		Threatened <sup>2</sup>		Vulnerable <sup>3</sup>		Near Threatened <sup>4</sup>		Total	
	IUCN	IBAMA	IUCN	IBAMA	IUCN	IBAMA	IUCN	IBAMA	IUCN	IBAMA
Plants	1	-	1	3	6	2	1	6	9	11
Mammals	-	-	2	2	7	15	5	2	14	19
Birds	-	-	-	1	2	3	4	8	6	12
Reptiles	-	-	-	-	1	-	-	-	1	-
Arthropods	-	-	1	1	-	-	-	-	1	1
Fish	-	-	-	-	-	-	-	1	-	1
<b>Total</b>	<b>1</b>	<b>-</b>	<b>4</b>	<b>7</b>	<b>16</b>	<b>20</b>	<b>10</b>	<b>17</b>	<b>31</b>	<b>44</b>

IUCN Nomenclature: <sup>1</sup>Critically Endangered (CE); <sup>2</sup>Endangered (EN); <sup>3</sup>Vulnerable (VU); <sup>4</sup>Near Threatened (NT)

Source: SUZANO MS, 2021.

Red Brocket  
(*Mazama americana*)



# Monitoring of water resources

*Suzano evaluates the effects of its plantings on the quality and quantity of water resources through a representative monitoring network according to the scale and intensity of the plantings.*

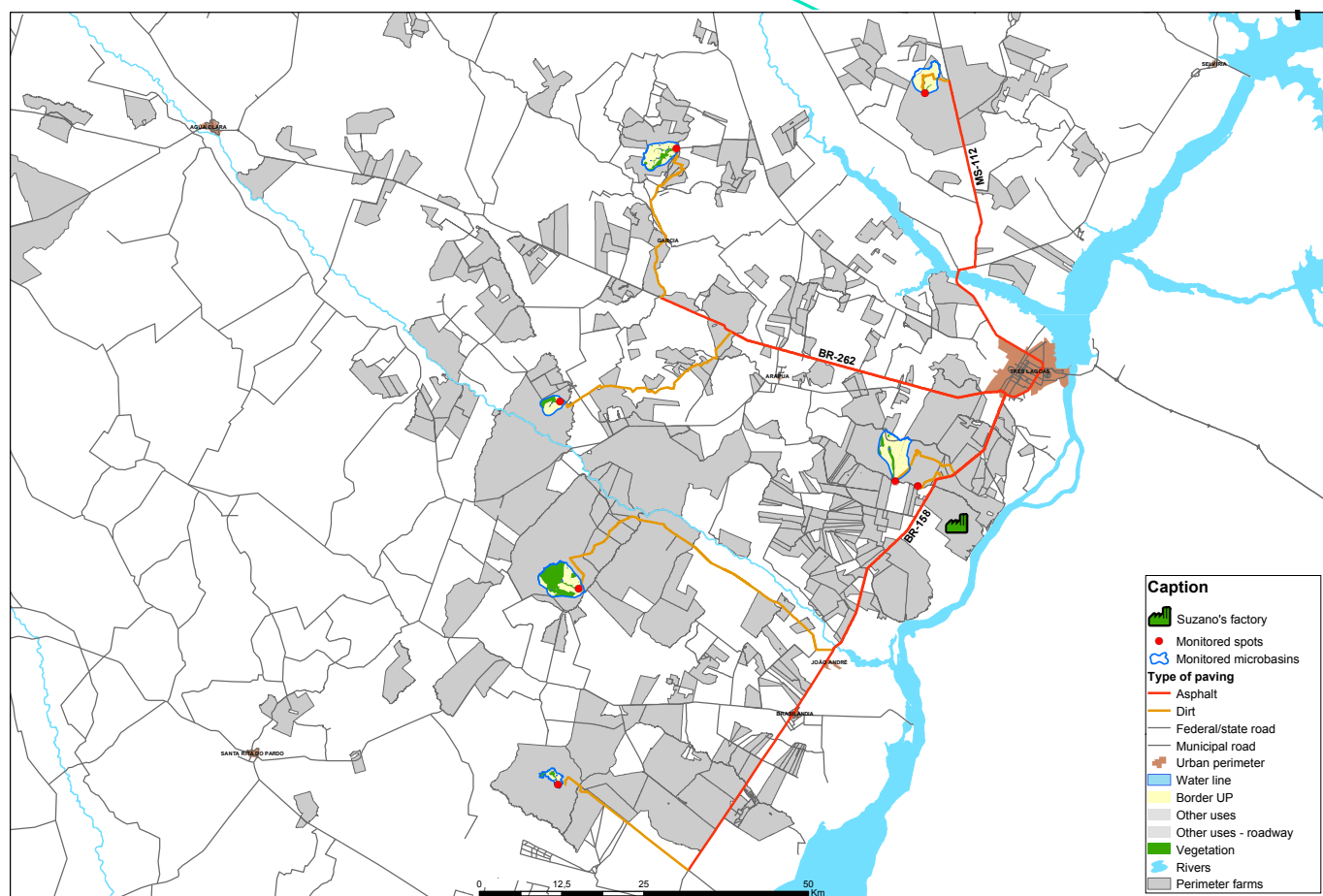
One of the mechanisms applied to preserve water resources is based on natural control, developed through evolutionary processes of the landscape. One example is the well-known relationship between forest coverage and water resources. These actions are primarily taken in Permanent Preservation Areas aiming to meet the legislation and constraints posed by the forest operation permits.

Six microbasins are continuously monitored. They represent the different regions of operation of FBU-MS.

Water quality and flow data show that eucalyptus planting cannot be correlated with negative environmental impacts.

Microbasins	Area (ha)
Matão	1,307
Duas Marias	2,626
Granada	2,391
Vista Alegre	1,567
São Marcos	737
Antares	463
<b>Total</b>	<b>9,091</b>

## Location of microbasins (MS)





# Environmental aspects and impacts of forest management

*Suzano is committed to adopting the best environmental practices to innovate in promoting a sustainable development.*



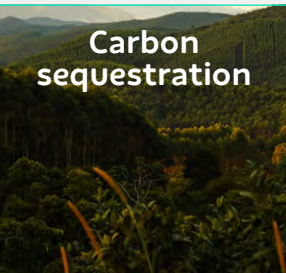

Focusing on process sustainability, the company uses managerial instruments and tools that provide better environmental quality in its forestry activities. Managing environmental aspects and impacts, the FBU defines methodologies for the identification, assessment and control of environmental aspects and impacts (of its services, activities and products), seeking to minimize all possible adverse impacts and strengthen the beneficial ones.

Environmental aspects and impacts of forestry processes are identified and assessed considering:

- The new laws that apply to the business;
- Compliance with the current law;
- Regulatory marks;
- Obligations resulting from agreements and voluntary certifications;
- Change management for new products, services, activities and equipment.

Once identified the environmental aspects and impacts, mitigation, control and monitoring actions are established.

## Examples of environmental aspects and impacts of forest management

Type of impact	Adverse	Adverse	Beneficial	Beneficial
Environmental Aspect	<b>Water consumption</b> 	<b>Risk of fire</b> 	<b>Carbon sequestration</b> 	<b>Improvement of ecological processes</b> 
Environmental impact	Scarcity of water resources.	Alteration in the physical properties of the soil.	Reduction of Greenhouse effect.	Recuperação da Biodiversidade.
Control measure	Dedicated physical devices and controls to adjust and control the amount of water used; Use of rainwater.	Fire control systems and fire brigade teams.	CO <sub>2</sub> sequestration by forestry production and conservation areas.	<ul style="list-style-type: none"> <li>• Restoration of degraded areas;</li> <li>• Conservation of PPA and LR.</li> </ul>



# Ecological Restoration

*The Ecological Restoration Program aims to restore the ecological processes that are responsible for a sustainable functional forest.*

These actions are primarily taken in Permanent Preservation Areas aiming to meet the legislation.

In 2020, the Ecological Restoration Program of FBU-MS was revisited, initiating a project of reevaluation of all areas destined to conservation. This project aims to identify and characterize the different phytophysionomies of the Cerrado biome and then propose more assertive recommendations for the restoration. In terms of field operations, maintenance was conducted on 46 ha of areas implanted in the previous years. Maintenance activities were conducted on a farm located in Selviria, a municipality where the company operates.

Integrated management at the landscape scale is one of the program's principles, and contributes with an increase in biodiversity and creation of several environmental services in its area of operation using the following restoration methods: planting of native species seedlings from the Atlantic forest, implementation of natural regeneration, invasive species control, and isolation of protected areas with passive restoration.

The ideal technique is defined according to the environmental conditions of the area to be restored, as well as its historical regeneration potential, and degradation factors.

## Ecological Restoration in numbers

	2017	2018	2019
Goal (ha)	74	168	110
Implanted (ha)	93	168	110
	2012-2019	2019	
Restoration / Implantation (ha)	2.318,95	110	
Restoration in PPAs along watercourses	272,07	110	
Number of municipalities	4	3	

\* No goal was defined and no new areas were implanted in 2020.

In 2020, the FBU-MS has started the restoration of  
**46 ha**  
 with native forest species



# Solid waste management

*Suzano's Solid Waste Management procedure adopts practices to classify, separate, store, collect, transport, and dispose of waste produced in forestry operations and activities, aiming to:*

- Reduce waste production;
- Reuse of residues, optimizing its use before disposal;
- Recycle residues;
- Adequately process waste;
- Ensure the proper disposal.

Waste management in the forest areas is performed according to the effective legislation. Waste is forwarded according to its classification to recipients that undergo a rigid process of evaluation and approval, Class I waste (Hazardous) might be sent for co-processing, recycling and licensed Class I landfills, Class II waste (non-Hazardous) are sent for recycling or licensed landfills, depending on its physical characteristics.

Packages of pesticides used in forestry operations are sent to licensed Empty Crop Protection Packages Receiving Units for reverse logistics.

## Waste management steps

Waste recipients go through evaluation and *approval*



Sorting



Temporary storage



Transportation



### Final Disposal

- Recycling
- Reuse
- Reverse logistics
- Co-processing
- Licensed landfill

# Environmental Education

*The Environmental Training Program disseminates information and environmental practices to raise awareness among its participants about sustainable attitudes and behavior capable of transforming the socioenvironmental reality.*

To reach both the internal and external audiences, this Program was divided in three different projects in line with the reality of each target audience.

The Internal Environmental Training Program has impacted over 4000 collaborators through 233 trainings. The trainings addressed issues such as waste sorting, management of environmental aspects and impacts, conservation of water resources, protection of fauna and flora, good environmental practices during operations, and conservation of air and soil.

The External Environmental Training Program has impacted 1,000 4th grade students of public schools, addressing socioenvironmental issues and sustainability in the context of the local community and school.

In 2020, 3,500 collaborators and 1,250 students were impacted with  
*socioenvironmental information*







12.

# Acknowledgement Of and Respect for *Professionals*

## 12. Acknowledgement Of and Respect for Professionals

### Safety, Health and Quality of Life

*The valuation of, and respect for, professionals are Suzano's commitment. Safety and health management is one of Suzano's priorities. The company encourages all individuals to take responsibility for safety and spares no resources to further reduce the rate of accidents.*

The Occupational Health and Safety Management program provides guidance on the registration of events in and outside the company, providing the Safety Department with the elements required for the development of awareness campaigns that extrapolate the management boundaries and contributes significantly to the quality of life of employees, their families and the communities surrounding Suzano's areas of operation.

Checking and ensuring work safety and health conditions, as well as the use of safety devices, are also covered by the collective agreement signed with the employees' representative entities. All events related to the employees health and safety are registered and monitored based on a corporative standard for the communication of accidents, incidents and occupational disease.

Programs developed by Suzano to ensure safety at work involve the preparation of documents that seek to identify the risks associated with operations, such as the Environmental Risk Prevention Program (PPRA), Preliminary Risk Analysis (APR), Work Risk Observation (OPA), Safety in the Area, and work permits.

All activities are checked and monitored for below-standard conditions and practices (*Fique Alerta / DNA - "De Olho na Área"*) and approached by programs as the Program for Medical Control of Occupational Health (PCMSO). The system is composed of different groups and committees that help monitoring and provide guidance on safety and health conditions. The initiatives aim to establish and maintain a responsible and transparent relationship with all employees in order to adopt the best existing practices in the industrial, forestry and administrative units. This process helps to build Suzano's reputation among its key relationship public and seeks to explore synergies and to better employ our professionals talents.

#### Safety performance of FBU-MS forestry operations

Safety indicators	2016	2017	2018	2019	2020
Rate of events with lost work days	0.34	0.53	0.42	0.29	0.3
Rate of events with and without lost work days	2.57	2.54	3.28	2.42	1.51
Severity rate	76	54	62	22	15
Occupational Safety Management Index	91	99	84	95	89



# Workforce Qualification

*The company contributes to the generation of local jobs by improving the economic activities in the region of operation.*

Our collaborators and vendors are offered personal and professional development opportunities. All collaborators take part in training activities that address not only technical aspects of the operation, but also subjects such as ethics and human rights. The welfare of every employee and level of satisfaction with the company are also closely monitored through organizational surveys.

The company conducts a structured process of integration of new employees and permanent vendors that aims to facilitate their adaptation into the work environment, the organizational culture, concepts and drivers, environmental conservation, code of conduct, the management system and stakeholders relationship.

Suzano has a benefits policy aligned to the good practices of the market and to its employees' expectancies. The benefits granted represent a significant value for the company and its employees, and are managed in order to ensure the best quality level and provide comfort and satisfaction.

## Job creation at the FBU-MS

Own*	1,554
Vendors*	1,387
<b>Total</b>	<b>2,941</b>

\*Data from April - 2020







13.

# Social

## Management

## 13. *Social* Management

*Suzano prioritizes a clear and straightforward work toward social aspects directly or indirectly affected by its forest management activities.*

*With this end, the company considers a set of specific actions aimed at the different audiences influenced by its activities.*



Craftsmanship  
from Ofayé Village,  
Brasilândia (MS)

# Stakeholders Relationship Management

Suzano's relationship strategy is to ensure social and business legitimacy through the long-term strengthening of its interaction with neighboring communities and the integration of its interests into forestry business management.

Suzano's relationship with communities surrounding its operations follows the following approach:



## 1. Priorization Matrix

Process of characterization of the area where Suzano is present to guide the activities with social impact to be adopted in each case. This study provides an assertive guidance for social investment and other actions for local engagement.



## 2. Engagement

Structured, inclusive and continued relationship, where the company plays the role of a partner toward the local development.

Takes place on the communities most impacted by Suzano's operation. In rural communities, engagement is promoted by the Rural and Territorial Development Program (PDRT), Beehives Program, among others.



## 3. Operational Dialog

Channel for direct communication through which the company informs the residents of neighboring communities about the forestry operations scheduled in that region according to an annual planning of activities, and discusses impacts and mitigation actions.

This process also integrates annual visits to ensure a continuous relationship with the neighboring communities.



São Judas Tadeu Chapel



# Management of social impacts

*Suzano understands “social impacts in the communities” as any changes (harmful or beneficial) caused entirely or partially by its forestry operations within three kilometers radius of its properties or areas leased for eucalyptus production.*

The management of social impacts model seeks to eliminate, reduce or compensate the negative impacts through management practices, socioenvironmental investment, and continuous control and mitigation actions.

Despite all measures taken to prevent and mitigate adverse impacts, unpredictable losses and damages can still occur, directly affecting the communities resources or livelihood. In this case, these losses and damages are compensated and mitigated, in common agreement and according to the particularities of each case, in a fair and balanced way.

In the following, examples of adverse social impacts from forestry management and the corresponding mitigation and prevention measures are presented. For conflict resolution, disputes and compensations involving rights of use, possession and control of the land, the company has defined directives that prioritize a friendly and fair solution for the parts.

## Examples of adverse social impacts and controls

Social Impacts	Control
Modification of the local land-ownership structure	<ul style="list-style-type: none"> <li>• Investments in forest technology to increase productivity (reducing the need for new acquisitions of land)</li> <li>• Guidelines for land occupation</li> <li>• Guideline for expansion with 100% of leases.</li> <li>• Guidelines for land conflict resolution</li> </ul>
Disorganization of the local communities way of life	<ul style="list-style-type: none"> <li>• Relationship management</li> <li>• Traditional communities mapping</li> <li>• Respect to places of traditional community use</li> <li>• Environmental Awareness Program</li> <li>• Guidelines for land occupation</li> <li>• PDRT – Rural and Territorial Development Program</li> </ul>
Change of landscape (visual) and loss of reference	<ul style="list-style-type: none"> <li>• Operational Dialog</li> <li>• Harvest in mosaic</li> </ul>
Land valuation	<ul style="list-style-type: none"> <li>• Investments in forest technology to increase productivity (reducing the need for new acquisitions of land)</li> <li>• Guidelines for land occupation</li> <li>• Guideline for expansion with 100% of leases.</li> </ul>
Change in historic heritage	<ul style="list-style-type: none"> <li>• Operational Dialog</li> <li>• Guidelines for land occupation</li> <li>• Socioenvironmental planning (micro planning)</li> </ul>
Isolation of properties and communities	<ul style="list-style-type: none"> <li>• Guidelines for land occupation</li> <li>• Minimum distance between plantings and districts and public use equipment</li> <li>• Retreat of plantings where the minimum distance has not been met</li> <li>• Provision of areas to Community Associations</li> <li>• PDRT – Rural and Territorial Development Program</li> </ul>

# Analysis and monitoring of stakeholders relationship processes

All the demands concerning forestry operations, identified in the engagement processes, operational dialogs and participative agenda are critically assessed and validated by the operational areas to review the social impact matrix and improve Suzano's forest management.

## Effectiveness of the socioenvironmental impacts mitigation actions

Area	Category	Name of Monitoring	Indicator	Results 2020
Social	Impacts on the Communities	Investment in the Community (GRI EC1)	Socioenvironmental investments (R\$)	R\$ 4,063,516.51
			Share of donations to socioenvironmental investments (%)	5%
			Rural communities on PDRT - Rural and Territorial Development Program	15
		Operational dialog	Rate of fulfillment of the annual dialog program (%)	100%
			Rate of fulfillment of operational demands (%)	80%
			Rate of effectiveness of mitigation actions	2.9
		Registration of impacts caused by the operations	Number of complaints received	32
			Average time to address a complaint (days)	115



Beehives Project - Tres Lagoas (MS)



# Socioenvironmental investment

Socioenvironmental investment is the voluntary transference of private resources in a planned, monitored and systematic way to social, environmental and cultural projects of public interest that contributes to the development of the communities where Suzano operates. Such investments are segmented into four types of interventions:

## Partnership

Short-term one-off support, with social purpose, that require a counterpart from the applicant. Are related to operations, expertise and products from Suzano's business.

## Donation

Very short-term one-off support to meet stakeholders demands aiming to strengthen institutional relationships.

## Sponsorship

Granting of resources, whether financial, material and/or services provided by Suzano to enable certain activity or event. Is considered a communication tool.

## Project

Social investments planned and developed within the scope of a certain program, with well-defined purpose and duration (objectives, goals, deadlines, process indicators, results and impacts).



PDRT Garcias  
(MS)

PDRT Brasilândia (MS)  
- Santana Community  
Santa Emília



## Social Programs and Projects

Projects	Strategic axis	Municipality	Target audience	# of people impacted	Implementing entity	Source of budget
Operational Dialog	Communication with stakeholders	Aparecida do Taboado, Três Lagoas, Água Clara, Selvíria, Ribas do Rio Pardo, Santa Rita do Pardo	Neighbors and communities	998	Arruda e Arruda Consultoria	Suzano
Mobiliza Jovem	Culture	Água Clara	Children and young adults from 4 to 21 years old	90	Guarda Mirim Association and Martial Band Cristo Rei	Suzano
Colmeias program	Local development	Água Clara, Três Lagoas, Santa Rita do Pardo, Selvíria, Brasilândia	Beekeepers, rural producers	150	Suzano	Suzano
Veterinary technology innovation	Local development	Selvíria	Family farms settlement; Neighbors of the forestry base; small farmers	134	SEBRAE	Suzano / SEBRAE
Rural and Territorial Development Program – PDRT	Local development	Três Lagoas, Brasilândia, Selvíria, Santa Rita do Pardo	Family farms settlement; Neighbors of the forestry base; small farmers	1,065	Simbiose Consultoria	Suzano
Indigenous Sustainability Plan Ofayé	Subsistence agriculture	Brasilândia	Indigenous people living in Anodi Ofayé village	12	Simbiose Consultoria	Suzano
Transformar	Education	Brasilândia	Teachers and students from the forestry base neighborhood	90	AH Foundation	Suzano
Selective collection - ASSOBRRAA	Job posts and income generation	Brasilândia	Environmental agents	13	Mundo Melhor NGO	Suzano
Judô Cidadão	Sports	Três Lagoas	Children and young adults from 4 to 21 years old	100	Treslagoense Association for Judo	Suzano
Agente do Bem	Social integration, qualification and citizenship	Três Lagoas	Neighbors, employees, suppliers, associations, foundations, professionals of education among others	4,215	Suzano	Suzano
Suzano Education Program	Education	Água Clara	Students of the municipal school network	3,175	CEDAC	Suzano
Fishery warehouse Jupia	Job posts and income generation	Três Lagoas	Fishermen's village Z-3	39	Business unit	Suzano
Arapuá dairy	Job posts and income generation	Três Lagoas	Rural center of Arapuã	28	Business unit	Suzano
Integra Vestia	Culture	Selvíria	Children, young adults and adults of Vestia community	70	Diocese Três Lagoas	Suzano

# Performance and key indicators of forest management

Aspect	Resp. Process	Monitoring	Indicators	Unit	Goal 2020	Actual 2020	Critical analysis actions	Systems/ Database	Frequency
Environmental	Asset intelligence	Fire	Fire during planting	ha	0	5,471.69	Incidents became more frequent in 2020 due to the prolonged drought and high temperatures predominant in the center-western region of Brazil, an atypical scenario considering previous years.	Zenith	Monthly
	Forestry	Forestry controls	Ant bait consumption	kg/ha	6.62	7.27	Higher dose usage than anticipated due to high infestation of leafcutter ants. Higher volume in hotspots.	PB20-Pfin/ZFL98N	Monthly
			Weedkiller consumption	kg/ha	1.83	1.82	Consumption according to planning.	PB20-Pfin/ZFL98N	Monthly
	Environment	Fauna monitoring (Environmental HCV areas)	Fulfillment of the schedule	%	100 relative to Moeda monitoring)	100	Goal was reached in its totality. See Monitoring report.	Directory	Biannually
		Quantitative and qualitative monitoring of water	Fulfillment of the schedule	%	100	100	See Critical analysis report.	Directory on the web	Monthly
		Restoration	Hectares with initiated restoration	ha	0	0	No new areas were implanted. Maintenance was conducted on 46.32 ha of areas implanted in previous years.	Spreadsheet for internal control	On demand
SSQV	SSQV	Monitoring of management of the Internal System for Incidents and Deviations Management (Fique Alerta)	Termination of deviations	%	90	92.83	Effective management of the tools by EPS and employees exceeding the goal at FBU-MS.	SDWeb system	Monthly
		Safety in the area program: safety dialogs in the field on guided topics to motivate a safety behavior in the field when performing activities	Level of perception about the knowledge of the safety management integrated system	%	90	100	In 2020, the leadership adhered to the program. This resulted in greater awareness among collaborators.	Portal SSQV	Monthly

Aspect	Resp. Process	Monitoring	Indicators	Unit	Goal 2020	Actual 2020	Critical analysis actions	Systems/ Database	Frequency
Social	People and management	Hiring of local workforce	Percent of local workforce hirings	%	90	86	Hirings focus on local workforce. However, some departments, such as Forest harvest lack professionals with the required qualification. To address this issue, the company is launching a training program targeting some departments of forestry operations.	SAP / GSG	Annual
	Rural and territorial dev.	PSO - Sustainability program Ofayé Families	Families	Nº	30	30	Due to the Covid-19 pandemic, all actions encompassed craftsmanship, food safety and agriculture, in addition to donations of protection items. Technical guidance were given remotely. 100% of benefited families were contemplated.	SISPART/ Smartsheet	Annual
		Rural and territorial development program - PDRT	Families	Nº	1.065	1.065	The program developed actions for income generation with agroecologic produce, fruits and vegetables, dairy products and traditional rural cuisine. The goal was reached by keeping this program in the axis of management, production and commercialization, thus ensuring food safety of the benefited families.	SISPART/ Smartsheet	Annual
			Localities	Nº	15	15	100% of high priority localities in the localities matrix were benefited.	SISPART/ Smartsheet	Annual
		Colmeias (beekeeping program)	Families	Nº	150	150	The program provided bee pasture within the planted forest basis for 100% of the families participating in this program, generating income and contributing to protecting Suzano's forests.	SISPART/ Smartsheet	Annual
Economic	Asset intelligence	Non-authorized events in forest management areas	# of events	Nº	0	302	Events of animal trespassing, illegal hunting and fishing, among others, causing economic losses. We kept daily controls and monitoring with surveillance teams.	Zenith	Daily
		Theft	Volume of commercial wood (m³)	m³	0	0	There was no events of this type. We kept daily controls and monitoring with surveillance teams.	Zenith	Daily
	Wood supply	Time to load	Length of stay of trucks at the factories	(min/trip)	60	94	In 2020, length of stay at the factories was above the goal. Projection of structural logistic rearrangement for 2021.	SAP	Daily
		Distance	Average radius of factories	km	136.35	144.42	Average radius strategy for loading at the factories still above the goal. Actions to improve this aspect are ongoing at the unit.	CAP	Monthly





# 14. Communication with *Stakeholders*

## 14. Communication with *Stakeholders*

*Suzano is constantly in contact with its employees and with the several segments of society, keeping them up to date on its activities, and always keeping things clear, transparent and straightforward.*

**Among the most commonly used communication media are:**

### Internal audience

Corporate social media, Intranet, Printed and Digital newsletters, walls, Forest Podcast, Corporate TV, Manuals and Educational guides.

### External Audience

Press Relations, Website, Social media, Visitation programs, Annual reports, Management plan summary. In addition to those, the company maintains other communication channels, as described below.





## Communication with specific audiences

### Suzano Answers

0800 022 1727  
or [suzanoresponde@suzano.com.br](mailto:suzanoresponde@suzano.com.br)

If you have any questions, suggestions for improvement, or complaints, please contact us, It is toll-free!

### Social Networks

-  Facebook  
[www.facebook.com/suzanoempresa/](https://www.facebook.com/suzanoempresa/)
-  Instagram  
[www.instagram.com/suzano\\_oficial/](https://www.instagram.com/suzano_oficial/)
-  Youtube  
[www.youtube.com/user/Suzanovideos](https://www.youtube.com/user/Suzanovideos)
-  LinkedIn  
[www.linkedin.com/company/suzano/](https://www.linkedin.com/company/suzano/)



### Ombudsman Suzano

Phones (toll-free)

Brazil  
0800 771 40 60

Phones abroad  
Check for the specific numbers on the Suzano Ombudsman website.

E-mail  
[ouvidoriaexterna@austernet.com.br](mailto:ouvidoriaexterna@austernet.com.br)

Website  
<https://ouvidoriaexterna-suzano.com.br/>



[www.suzano.com.br](http://www.suzano.com.br)