

1st EDITION | MAY 2021



Public Summary
of the

Forest Management Plan

2020

Forestry
Business Unit
Mucuri

Summary

03 About the
Summary

15 Forestry Business
Unit Mucuri

52 Acknowledgment
of and Respect
for Professionals

05 About
Suzano

20 Socioeconomic
Aspects

55 Social
Management

08 Where
We Are

24 The Importance
of Planted
Forests

70 Communication
with Stakeholders

11 Forest
Operation Area

28 Forest
Management

13 Forest
Certification

35 Environmental
Management

Proceedings

Every year Suzano S.A. prepares its Forest Management Plan for the regions where it operates based on data from the previous year and according to results of monitoring and control or significant changes in forestry operations, responsibilities and socioeconomic or environmental conditions. **All images depicting unmasked people were taken before the COVID-19 pandemic.**

Coordination

Sustainability

Formatting and Design

Folks Comunicação
Conteúdo
folks.cc

Cover

White-headed marmoset
(*Callithrix geoffroyi*)

Images

Suzano's archives
Eco Futuro
Casa da Floresta

1.

About the Summary



1. About the *Summary*

In this Public Summary of the Forest Management Plan Suzano S.A. presents information on the Forestry Operations in the region, including responsibilities, available resources and strategies for the adoption of responsible forest management practices aimed at sustainable development.

It is a synthesis of the Forest Management Plan, based on the main forest certifications: **FSC® – Forest Stewardship Council®, FSC-STD-BRA-01-2014 V1-1 PT FSC and NBR 14.789:2012 CERFLOR** (Forest Certification). Each system has its own principles and criteria.

Within the scope of forest certifications. Suzano S.A.'s Forestry Business Units are licensed under the following codes: FSC-C009927, FSC-C100704, FSC-C110130, FSC-C155943 and FSC-C118283.

In addition to the printed version, the Public Forest Management Plan Summary is emailed to the company's main relations: society, public authorities, neighbors and communities in its areas of operation, as well as employees and vendors.

Have a pleasant reading!

Additional Information, questions, feedback and suggestions that may arise from this reading should be sent to:

suzanoresponde@suzano.com.br

or calling

0800 022 1727



2. About *Suzano S.A.*



2. About **Suzano S.A.**

***Suzano S.A.** is a Brazilian company resulting from the merger of Suzano Papel e Celulose and Fibria Celulose. We are committed to being a global reference in the sustainable use of renewable resources.*

World Leader in the manufacturing of Eucalyptus pulp and one of the main paper manufacturer in Latin America, the company exports to over 80 countries and its products is part of the lives of over 2 billion people. With ten operating plants and the joint operation Veracel, its installed capacity is 10.9 million tons of market pulp and 1.4 million tons of paper per year.

With Eucalyptus planting, the company provides 37 thousand direct and indirect jobs and invests in innovation for over 90 years, replacing fossil-derived materials with renewable materials. The company is granted the highest Corporate Governance levels of B3 in Brazil and New York Stock Exchange (NYSE) in the USA, Stock Markets where its shares are traded.

From supplies to a wide range of industries to everyday life products, we cultivate life with the notebook of the child learning how to read, with the diaper protecting the baby, with the eco-friendly coffee cup, with toilet papers and with the convenience of a sustainable packaging.



People who
*inspire and
transform*

We create
and share
value

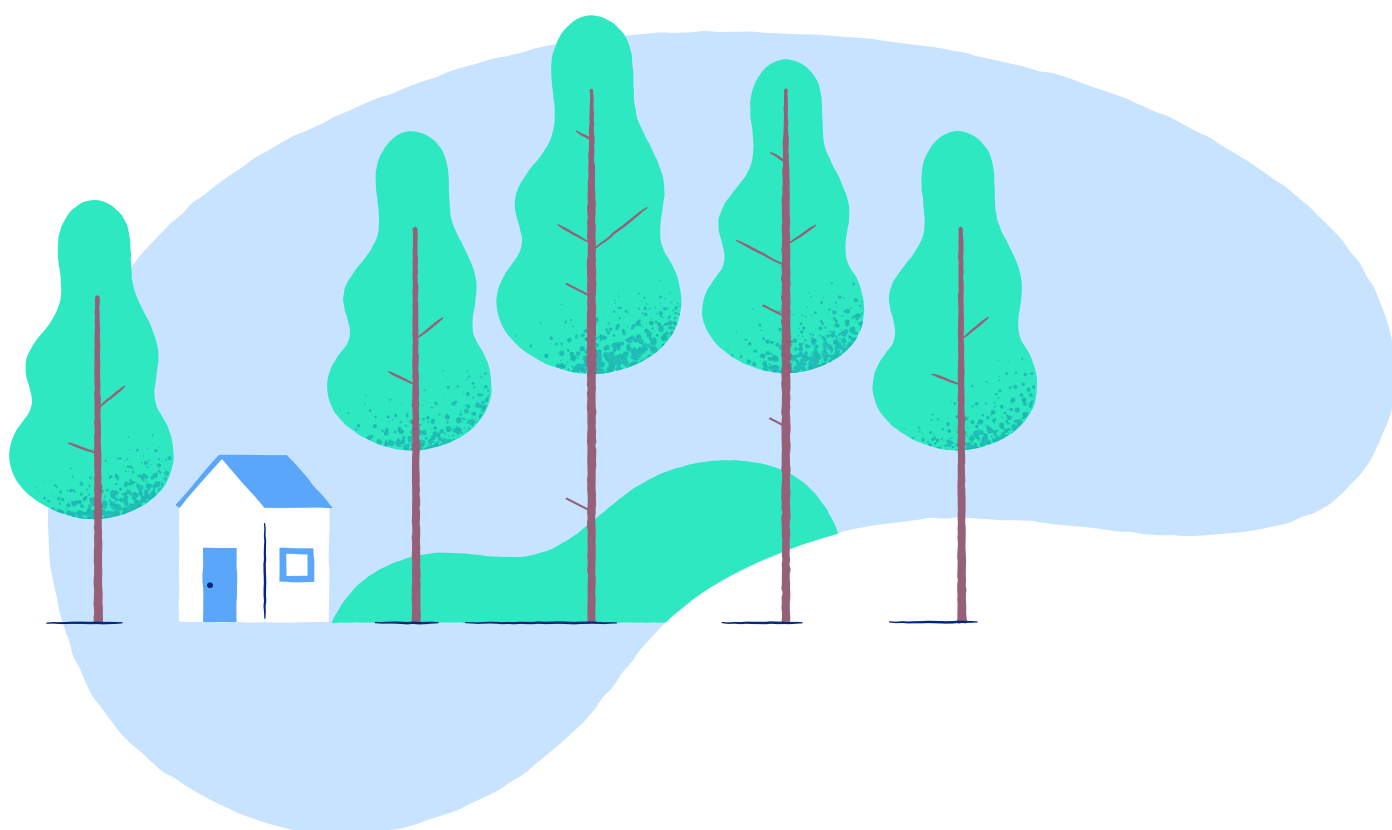
It's only good
for us if
*it's good for
the world*

We are a renewable basis company operating mainly in the segment of pulp and paper from Eucalyptus planting to supply companies all over the globe. Our portfolio is wide and diverse.

We invest in innovation that arises from the protagonism of our collaborators, by using renewable raw materials and biotechnology. We use sustainable practices in everything we do, from fluff to lignin, from cellulose to tissue, from A4 sheets to cardboard for packaging.

We operate responsibly based on our expertise in Eucalyptus planting. This means that we always use the best global management practices in cropping - that is how we contribute for the maintenance of fertility and protection against erosion and degradation.

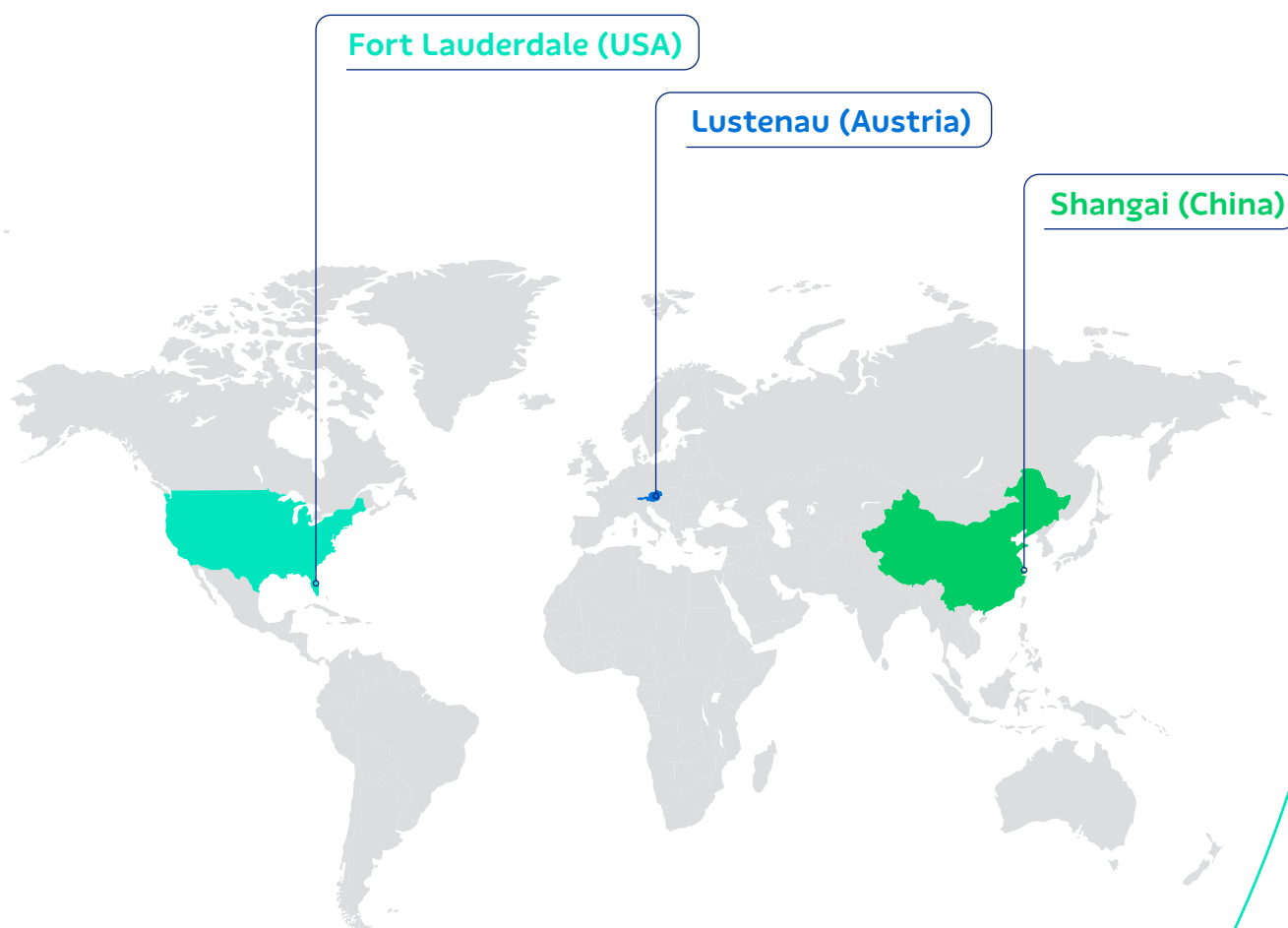
3. Where *We Are*



3. Where **We Are**

Business offices

We have business offices abroad in China, USA, Switzerland and Austria and subsidiaries in England and Argentina.



Distribution Centers

United States (4)

Europe (6)

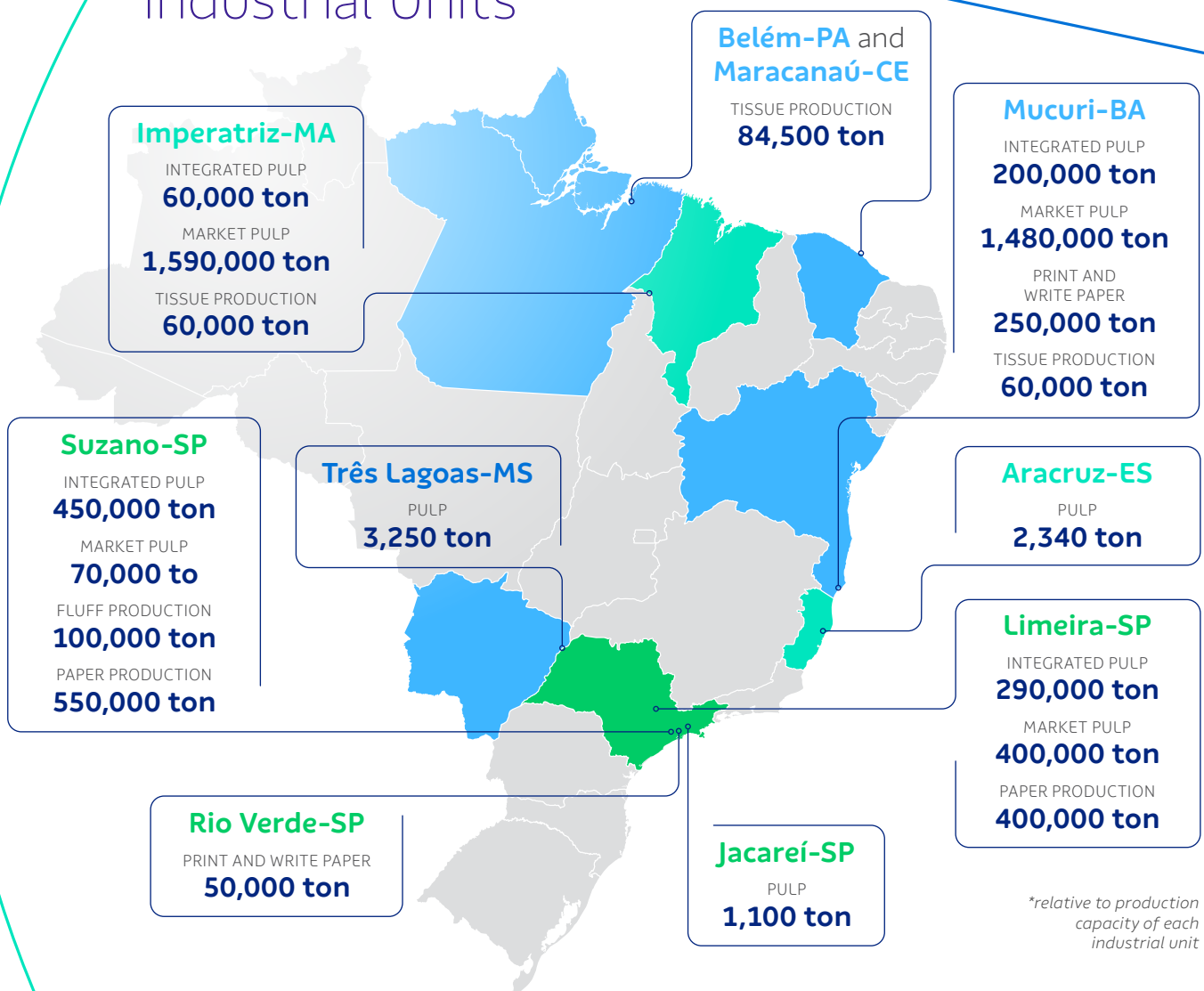
Asia (2)



Our organization includes administrative offices in Salvador (state of Bahia) and São Paulo (state of São Paulo), industrial plants and FuturaGene, responsible for the genetic development of forest crops and biofuels, with research laboratories in Israel and China.

We provide products and services from 1.3 million hectares of planted forests and 960 thousand hectares of preserved forest, situated in the states of Bahia, Espírito Santo, Minas Gerais, São Paulo, Mato Grosso do Sul, Maranhão, Tocantins, Para and Piauí.

Industrial Units*

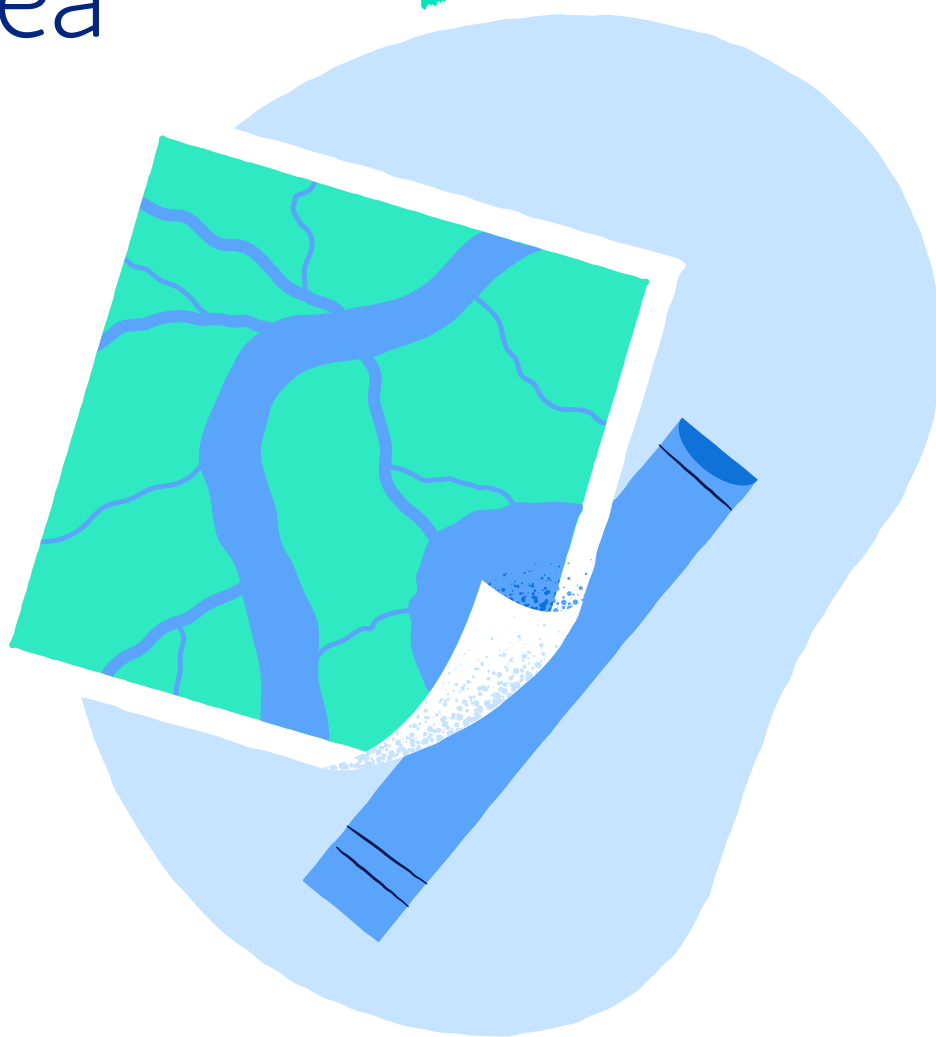


Terminals and Ports

Belmonte (BA)
Caravelas (BA)
Aracruz (ES)

Santos (SP)
São Luís (MA)

4. *Forest Operation* Area



4. *Forest Operation* Area

Forest assets with certification

Suzano's forest competitiveness ensures its operation in different regions with adequate productivity.

Owned, Leased and Partnership Areas

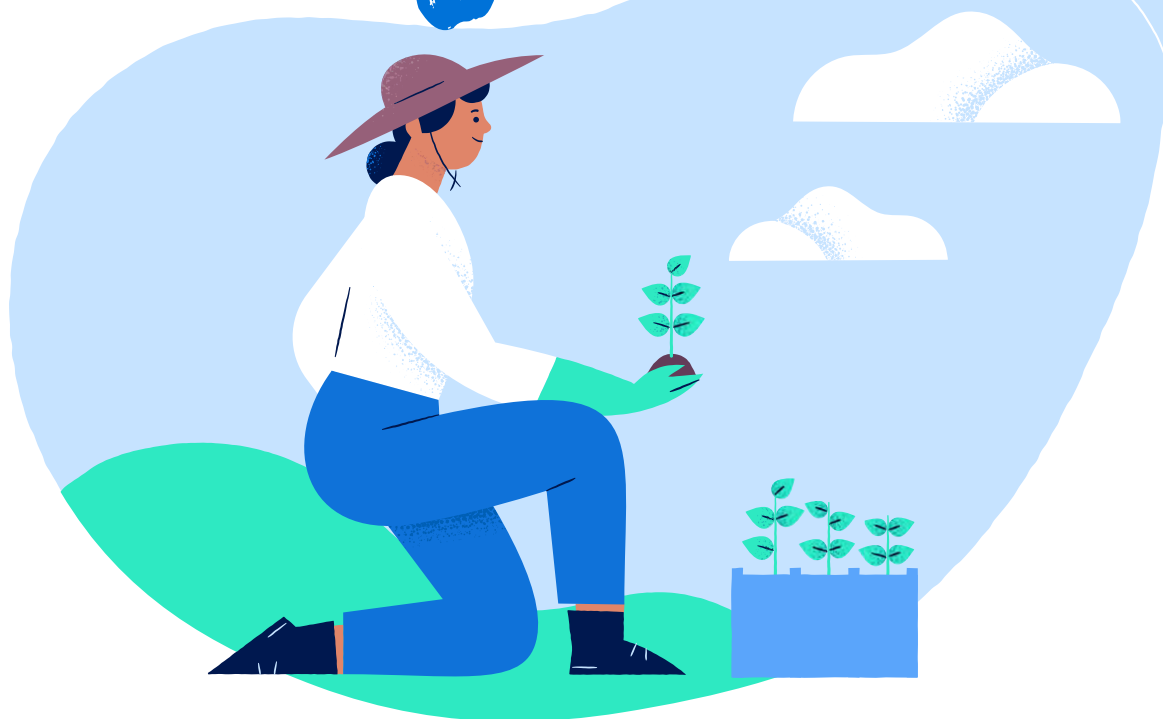
Business Units	Crop areas (ha)	Conservation (ha)	Infrastructure (ha)	Total (ha)
Aracruz / Mucuri	372,008	284,130	26,352	682,490
Imperatriz	225,352	297,336	17,123	539,811
Limeira / Suzano / Jacaré	230,572	130,551	17,528	378,651
Três Lagoas	391,162	162,500	18,583	572,245
Total	1,219,094	874,517	79,586	2,173,197

Data Dec/2020, without the areas of Teresina, Urbano Santos, Market/Third parties and Sponsorships

Forest areas within the scope of FSC® and CERFLOR Certifications of each Forest Business Unit

FBU	Certified areas FSC® and PEFC (ha)
Aracruz (ES)	215,750
Jacaré, Suzano and Limeira (SP)	349,750
Imperatriz (MA)	401,455
Mucuri (BA)	355,877
Três Lagoas (MS)	309,094
Total Suzano S.A.	1,631,926

5. Forest Certification



5. Forest *Certification*

Suzano S.A. states its commitment to conduct its Forest Management system according to the Principles and Criteria set by FSC® Certification and CERFLOR NBR 14.789 Forest Management, aiming to provide long-term business sustainability, continuous improvement of its activities and performance, as well as the adoption of environmentally correct and socially responsible practices.

To this end, the company has incorporated the environmental, social and economic dimensions into its forest management basic guidelines, as following:

- To seek technological innovations and to support research to apply the best forestry techniques in its forest production units.
- To contribute towards developing direct and indirect collaborators.
- To implement the Forest Production Plan based on environmental aspects, such as landscape and microbasins management, monitoring of fauna, maintenance of biodiversity corridors, and compliance with the applicable federal, state and city legislation, as well as international agreements of which Brazil is signatory.
- To contribute to maintenance or improvement of communities surrounding the forest management units through open dialog channels, participative follow-up of social indicators, sharing of relevant information and recreation areas or environmental education.

Timber traceability

Every timber harvested from eucalyptus planting in certified areas have their traceability ensured (stedwardship chain of custody), i.e., origin guaranteed from planting to transportation for industry, thus eliminating the risk of a mix up with logs from uncertified areas (timber controlled by Due Diligence assessment).

Suzano is
certified by
FSC® and CERFLOR
(NBR 14,789)



6.

Forestry Business Unit

Mucuri



6. Forestry Business Unit *Mucuri*

Suzano S.A. Forest Business Unit in Mucuri-BA is responsible for the forest management of the areas supplying the productive unit. The forestry management areas are located in the municipalities of Alcobaça, Caravelas, Ibirapuã, Lajedão, Medeiros Neto, Mucuri, Nova Viçosa, Prado, Teixeira de Freitas and Vereda in the state of Bahia and Carlos Chagas, Frei Inocência, Itanhomi, Jampruca, Nanuque and Tumiritinga in the state of Minas Gerais.

Plantings are carried out in owned lands, through leasing contracts, or through partnerships with rural producers. With a forest base of 413 thousand hectares, which 175 thousand hectares are intended for biodiversity conservation (data from December, 2020), Suzano-BA forest management is carried in a way to balance eucalyptus planting with natural resources conservation, technological innovations and the respect for the communities.

The whole production is based on renewable eucalyptus plantation, with the aim of supplying the industrial complex of Mucuri- BA, with capacity to produce 1,7 million tons of bleached eucalyptus pulp per year, as well as 250 thousand tons of white print and write paper and 60 thousand tons of tissue. The industrial plant in Mucuri - BA operates within environmental control standards, with technology aimed at monitoring emissions, air and water quality, and the proper disposal of waste.

The seedlings used have been created with clonal technology, from our own nursery as well as a certified partner nursery and hold the most advanced genetic database to grow forest towards cellulose production.

The FBU-BA encompasses a forest basis of

413.000 ha,

of which, about

175.000 ha

are destined to conservation.





The harvesting process used respects the region characteristics and uses efficient systems which use equipment that allow an efficient, safe and environmentally friendly operation.

To ensure success in all phases of the process, the company constantly invests in research, technology, and professional training.

Suzano's practice is to recruit candidates from the regions where it operates, provided that they meet the requirements for the job and apply on equivalent terms with other candidates. It is also the company's practice to train the workforce involving the communities, in partnership with universities and technical institutions.

Areas of Operation in the Municipalities

FU	Municipality	Area of the (ha)	Planting (ha)	Conservation (ha)	Other Uses (ha)	Total occupied area (ha)	Total occupied area (%)
BA	Alcobaça	148,228.50	38,826.05	31,758.41	3,042.27	73,626.73	49.67%
BA	Caravelas	237,787.20	56,503.17	36,499.23	3,431.75	96,434.15	40.55%
MG	Carlos Chagas	320,298.40	7,979.90	11,012.45	826.83	19,819.18	6.19%
MG	Frei Inocência	46,960.00	-	2,379.49	-	2,379.49	5.07%
BA	Ibirapuã	77,109.80	3,119.86	3,079.86	204.84	6,404.56	8.31%
MG	Itanhomi	48,884.30	-	731.58	-	731.58	1.50%
MG	Jampruca	52,099.80	-	1,091.54	-	1,091.54	2.10%
BA	Lajedão	62,435.30	2,075.28	1,111.82	287.25	3,474.35	5.56%
BA	Medeiros Neto	131,173.90	845.55	1,828.78	144.22	2,818.55	2.15%
BA	Mucuri	178,762.60	43,283.45	23,338.96	3,586.97	70,209.38	39.28%
MG	Nanuque	151,816.60	8,247.06	15,704.94	870.77	24,822.77	16.35%
BA	Nova Viçosa	131,638.00	42,109.87	23,542.44	3,318.84	68,971.15	52.39%
BA	Prado	168,783.30	6,810.25	7,606.72	608.64	15,025.61	8.90%
BA	Teixeira De Freitas	116,562.20	6,444.18	7,235.41	546.88	14,226.47	12.21%
MG	Tumiritinga	50,007.30	-	1,961.63	-	1,961.63	3.92%
MG	Umburatiba	40,583.40	563.76	1,049.84	59.82	1,673.42	4.12%
BA	Vereda	78,214.10	1,504.05	2,965.82	92.56	4,562.43	5.83%
Subtotal		2,041,344.70	218,312.43	172,898.92	17,021.64	408,232.99	20%
MG	Diamantina	389,165.90	70.72	391.95	16.66	479.33	0.12%
MG	Sen. Modestino Gonçalves	95,205.50	753.43	177.93	47.97	979.33	1.03%
MG	Turmalina	115,311.10	654.54	243.54	82.27	980.35	0.85%
MG	Virgem Da Lapa	86,891.40	1630.81	398.55	85.17	2114.53	2.43%
Subtotal		686,573.90	3,109.50	1,211.97	232.07	4,553.54	1%
Total		2,727,918.60	221,421.93	174,110.89	17,253.71	412,786.53	15%

Consolidated municipalities Bahia/Minas Gerais - 09/04/2021.

The spreadsheet data above were calculated based on the registration and DPN class (Available to Use).

The Municipalities of Diamantina, Senador Modestino Gonçalves, Turmalina and Virgem da Lapa, currently do not Supply Suzano's units.

Environmental Characteristics

The forest areas and other native vegetation present in Suzano's FBU-BA areas offer a number of conservation possibilities for local biodiversity. We're included in the Atlantic Forest (Dense Ombrophiles, Semi Deciduous Seasonal Forest and associated formations), containing broad biodiversity, traditional communities, a rich cultural heritage, tourist sites and water springs.

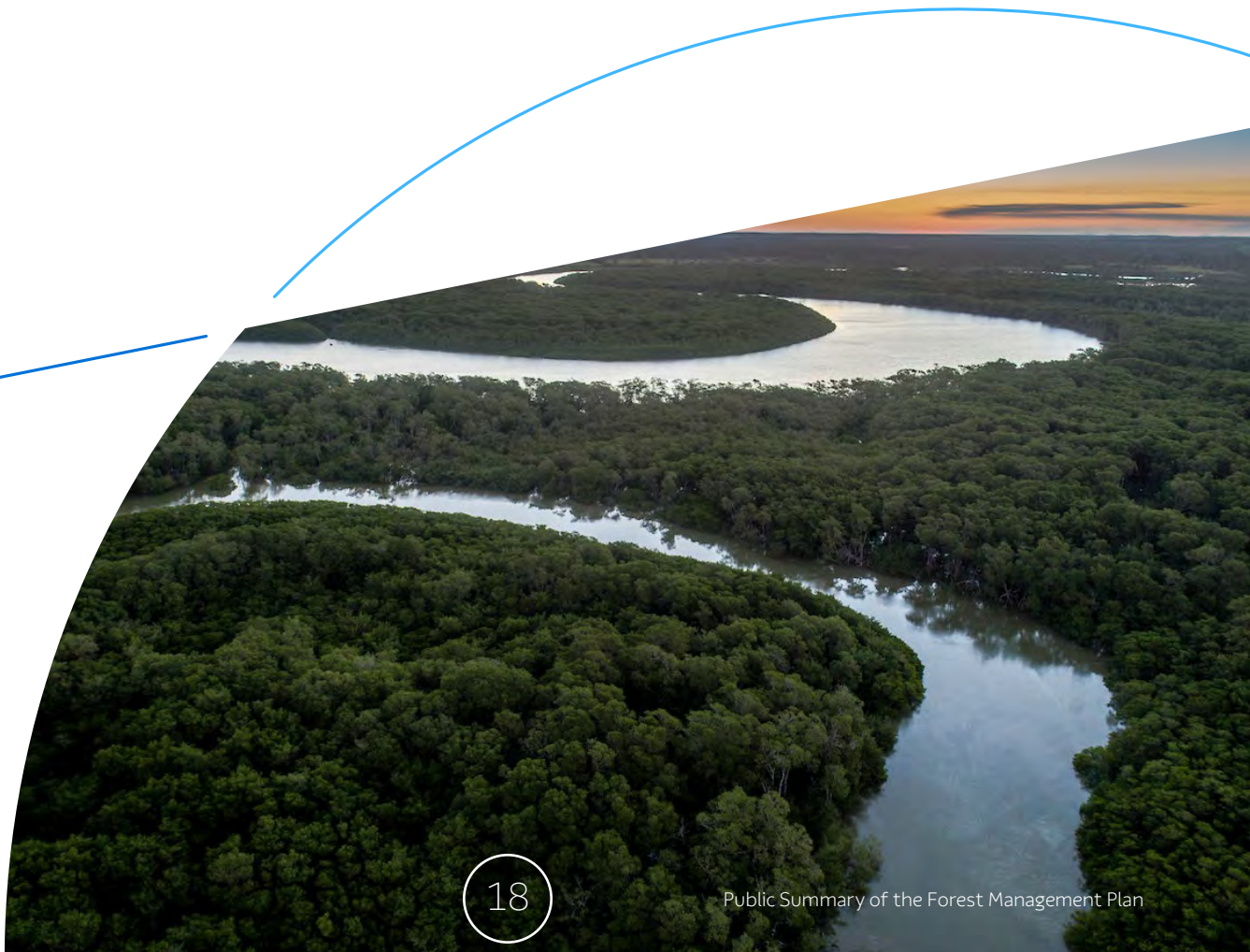
Soil, climate and hydrography

The soil in FBU-BA is mostly acid, deep, highly weathered, well drained, cohesive, resistant to erosion and compaction; very hard when dry and brittle when humid; low in organic matter and primary minerals that provide nutrition; with low natural fertility. There's prevalence of Ultisols, Spodosols and Latosols in Bahia's extreme south region, with high percentages of cohesive soil.

As per the terrain in the FBU-BA areas, it characterizes as small elevations and low slopes, being the highest local elevation the historical *Monte Pascoal*, with 586 mt above sea level.

The company's plantings are centered on a region of tropical warm humid and tropical warm super-humid climates, where average annual rainfall is between 1,000 and 1,400 mm/year. The plantings in Minas Gerais occupy an area where average annual rainfall range from 800 mm to 1,000 mm/year.

The main watersheds in the state of Bahia, within the area of influence, are Mucuri, Jucuruçu (south branch), Itanhém (or Alcobaça) and Peruípe Rivers. In the state of Minas Gerais, we can highlight the Rivers Itaúnas and Mucuri watersheds.



Fauna and Flora

Suzano S.A. Farms - FBU-BA are included in different mosaics of forest coverage and shelter different vegetations from the Atlantic Forest biome. In general, our farms shelter remaining areas capable of contributing to the conservation of a number of species, especially those endemic to the biome or in danger of extinction.

The environmental characterization in Suzano's areas of operation is done through diagnostics and monitoring of the fauna and flora.

In a general way, the studies seek to identify, randomly or systemic, the local fauna and flora species, enabling the identification of critical species (protected by law), mapping the habitats of endemic, rare and endangered species, and finding opportunities for more detailed studies, restorative actions on the flora, or improvement of environmental conditions for the fauna. The fauna monitoring campaigns are carried every three years, while flora monitoring is carried every four years and it includes hiking during dry and rain seasons.



7. Socioeconomic *Aspects*



7. Socioeconomic *Aspects*

Forestry areas

To characterize and identify the main social economic and cultural aspects present in the Forestry Centers supporting the work of the company in identifying the specific strategies in its area operation.

FBU-BA's extensive area of operation characterizes by different economic, social and cultural realities, as well as small, basically agricultural municipalities.

Eucalyptus planting constitutes of a dynamic activity in the region, being responsible for important social productive changes, even though traditional activities such as livestock, subsistence farming and fishing have great importance in regional economic productive structure.

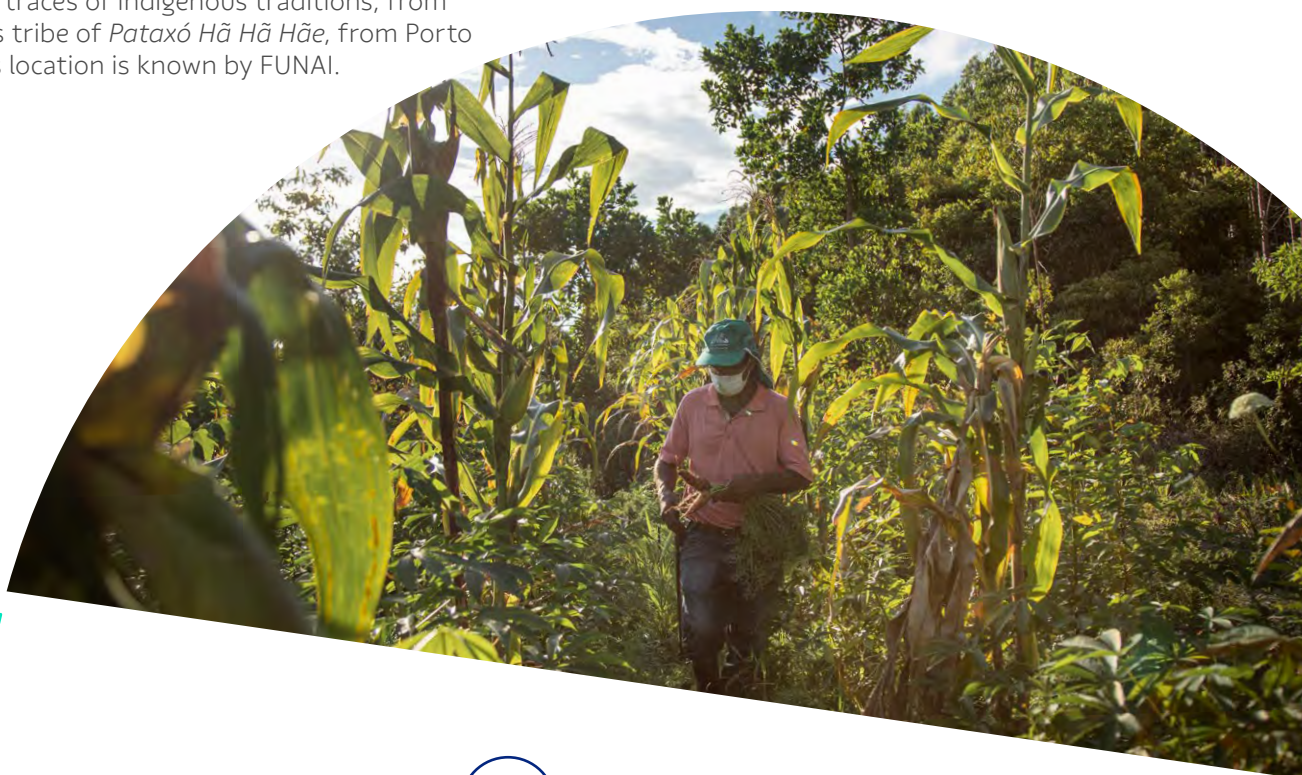
The regions of *Costa das Baleias* (Mucuri, Nova Viçosa, Caravelas, Alcobaça, Prado and Teixeira de Freitas) host a number of small and spread communities, disconnected from each other. In Bahia's extreme south region there's an indigenous community of the *Trika* tribe, in the municipality of Prado, where Suzano does not have its own planted areas. In 2013, it was identified in the municipality of Alcobaça-BA, in the district of *Pau da Garrafa*, a place called *Aldeia Renascer*, with traces of indigenous traditions, from the indigenous tribe of *Pataxó Hã Hã Hãe*, from Porto Seguro-BA. Its location is known by FUNAI.

In east Minas Gerais, the closest indigenous tribe is the *Maxakali*, located in the municipalities of Bertópolis and Santa Helena de Minas, over 100 km from where Suzano has planted areas.

The company identifies the social assets, by means of tools and procedures to frame the location profiles. These procedures and tools are used to understand and map the main social economic characteristics of the cities nearby and, in this way, to guarantee a strategic direction of the activities with the people, set by the Director of Sustainability planning and prioritize tools.

Archaeological information

The archaeological sites and places with historical and/or cultural relevance located in the company's areas or surroundings are identified in our cartographic base. Among the main actions performed, we highlight: identifying sites of special historical, archaeological, cultural, ecological, economic or religious significance for the communities and training field staff on archaeological heritage.





Distribution of Suzano's farms, Conservation units and Management Units of Water Resources

Conservation Units are legally recognized areas, with relevant natural features with the role of securing the representativeness of significant and ecologically viable samples of the different populations, habitats and ecosystems.

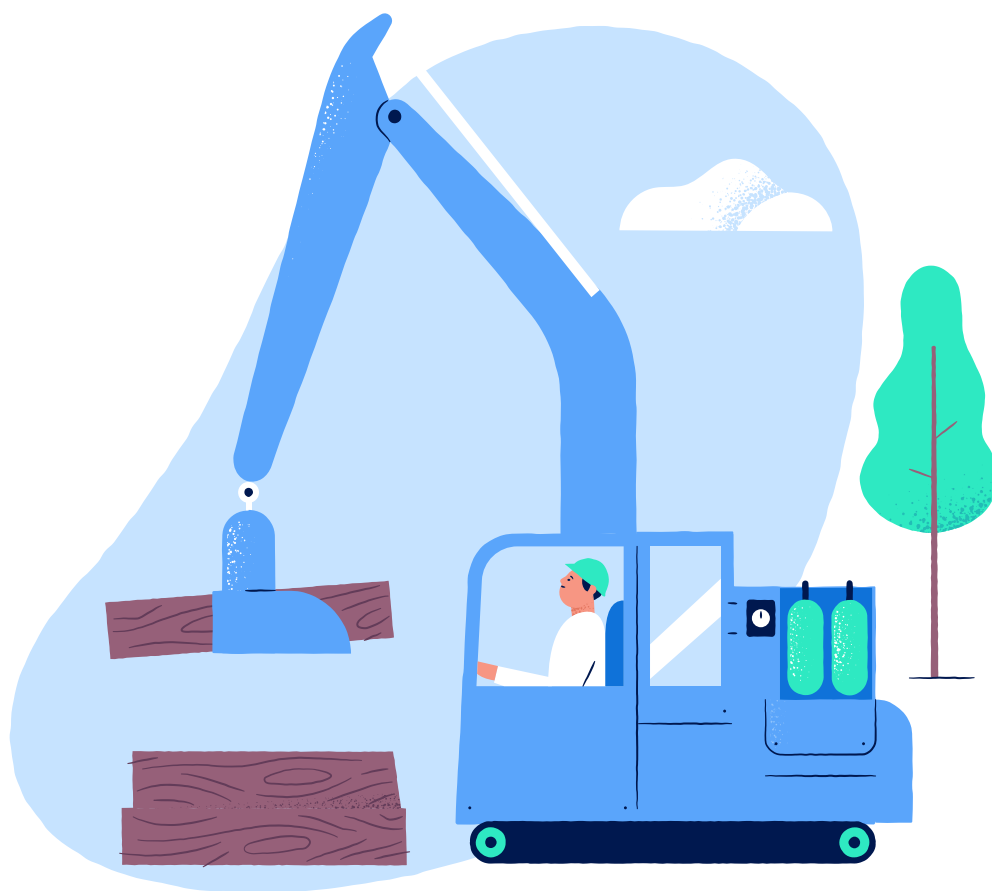
The fragments of native vegetation and planted forest have an important role in the set of biodiversity conservation actions both locally and state-wide.

The areas operated by Suzano, with the techniques provided to protect fragments and manage commercial crops, have relevant positive effects on the neighboring conservation units because they shelter significant amounts of biodiversity and maintain the functionality of key biological and ecological processes.

Furthermore, understanding where the company's areas are inserted relative to the river basins helps us to plan new implementation areas, and to maintain existing plantings.

The use of water in the operations is ruled by a state agency which, depending on each resource water availability and, the volume required for the other users, sets the max volume of water to be used by the company, to ensure the water supply to the processes' other users of the watershed.

23



8.

The Importance of *Planted Forests*

8. The Importance of *Planted Forests*

What is **Forest Management**?

Forest Management is the administration of forest resources with the aim of achieving economic and social benefits aligned with the mechanisms for ecosystem support by employing the best practices of Eucalyptus farming. The goal is to reach high productivity in balance with the environment conservation.

Objective

The goal of Suzano's forest management is to supply the industrial Units with Eucalyptus timber, according to the parameters described in the following, either in short or long terms.

- Availability and rational use of areas for the cultivation of Eucalyptus through directives and procedures for the purchase and lease of land.
- Development of new genetic material and monitoring of soil nutritional levels, pests and others, defined in operational routines and specific research projects.
- Standardization, reporting and continuous improvement of procedures related to seedling production, implementation, restoration, forestry practices, construction and conservation of roads, harvesting, and forestry products transportation.
- Outlining of programs concerning the environment, healthcare and safety at work, as well as socioenvironmental aspects, always in compliance with the applicable law.

Eucalyptus

- Is an exotic species (not native from Brazil), like coffee, corn, soy, sugar cane and several other crops widely cultivated in the country.
- With proper management, water consumption is similar to that of native forests and its roots are kept away from the water table.
- It is harvested in approximately seven years and can be cultivated in low fertility land.
- With proper management, it provides protection for biodiversity as shown by the biodiversity surveillance results in Suzano's areas.
- Of rapid growth, Eucalyptus helps to absorb carbon dioxide from the atmosphere, giving back pure oxygen. The role of Eucalyptus forests is key to humankind efforts to neutralize greenhouse gases, responsible for the Earth's warming.



Forest management activities



Compliance with the law

Suzano is always up-to-date with the applicable environmental, labor and tax laws with preliminary surveys carried out by an environmental law consulting firm.

Managed forest resources

To supply the demands of the industry for eucalyptus timber, we rely on crops of the genus *Eucalyptus*, which encompasses more than 600 species that are adapted to many different soil and weather conditions.

Eucalyptus originates from Australia and Indonesia. It was chosen due to its higher potential for timber production for pulp when compared to other forestry species and due to its adaptability to the environmental conditions in Brazil, including soil and weather.

Average annual production of plantings is approximately

36.5 m³/ha/year



Technology and Innovation

Suzano maintains advanced Technology Centers that develop studies and research on forestry and industry. These activities aim to a consistent enhancement of its operations and technological innovations, focusing on the company's sustainability.

Regarding forestry, the Technology Center works mainly on Classical Genetic Improvement, Forest Protection, Forest Management, Ecophysiology and Biotechnology, defining models of planted forest management that support an increase in forest biomass productivity.

Suzano's plantings are mostly formed by hybrids obtained from the crossbreeding of *Eucalyptus grandis* and *Eucalyptus urophylla*.

Those species were selected because they are better adapted to the local soil and weather conditions following several cycles of improvement and research. Currently, the tree is harvested in six years in average, varying from five to seven years. After the first harvest, the area is managed for a new planting or for regrowth.

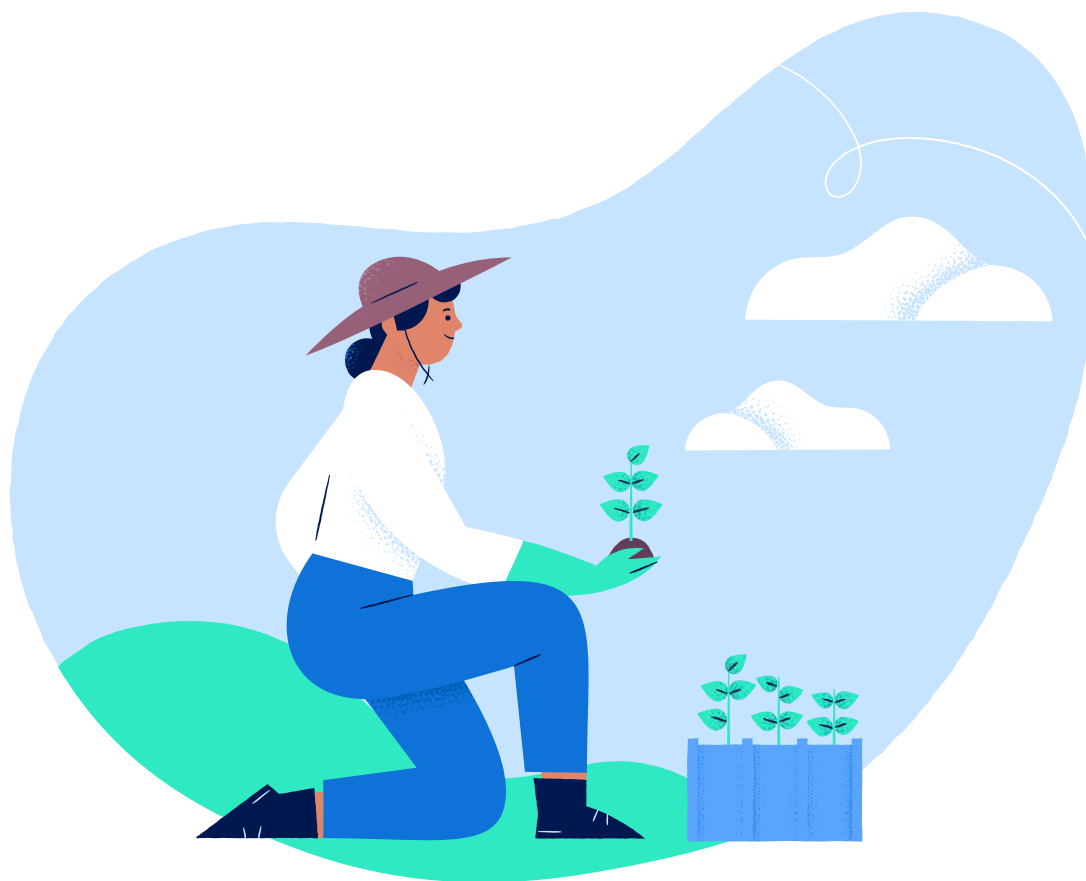


Partnerships

Suzano develops studies and research in collaboration with outstanding public and private institutions in Brazil and abroad. All projects and activities seek to meet market and operational demands, legal requirements, new tendencies, technologies and products of internal research strategies.

As a result, Suzano stands out in developing and recommending new genetic materials, in monitoring and recommending forest management practices and fertilization, in using new technologies in forest protection and more sustainable production practices. In addition to the results highlighted in forestry, Suzano also sustains solid and robust results in industrial and new businesses research and development.





9. Forest *Management*

9. Forest Management

Forest Protection

The company continuously monitor for pests, diseases and weed with regular field visits.

The objective is the early detection of pests and weeds, and the assessment of competition level of Eucalyptus with weed. All information gathered are used to help decisions on control and to define the method to be adopted, seeking for the rational use of pesticides.

Suzano also prioritizes the use of biological control agents in occasional pest management, and selection and planting of clones resistant to the main crop diseases, complementing the integrated management.

Forest Inventory

On its first 120 days, the forest is monitored through a Qualitative Inventory that allows inferences on the quality and homogeneity of plantings. In regrowth forests, performance is monitored at 90 and 180 days upon harvesting also through qualitative forest inventory.

The Forest Inventory uses sampling techniques to gather data that allow an estimate of the planting volume per hectare and per tree for a given age. This information is used in the decision making process on the best harvest time. It is also important for the proper planning of timber supply to the Industrial Unit.

Planning

Planting and harvesting planning for timber supply comprises short, medium and long term achievements, aiming at the best utilization of natural resources and minimizing occasional socioenvironmental impacts.

Forest planning keeps track of ordering to ensure the industry supply. The proper management of planted forests favors planting productivity and contributes to disease and pest control, biodiversity conservation, and protection of springs and ecosystem services - creating a virtuous cycle.

Development and Operational Excellence

This area is responsible for the development and transfer of mechanization and digitalization technology to forest processes.

Seeks the continuous improvement of forestry activities, harvest and logistics, with particular interest in routine management, quality and productivity of operations, as well as personnel qualification, thus promoting safety, product quality, high productivity, feasible costs for forestry activities and environmental conservation.

FBU-BA has an installed production capacity of approximately **19 million** seedlings per year

Seedling Production

The plant nursery is where the eucalyptus seedlings are produced and managed through several stages until reaching the proper size to be planted in the field.

The seedling development time ranges from 90 to 120 days. To produce seedlings of outstanding quality, the distance between them needs to be increased when they reach 60 days so that they can grow healthier.

The main activities related to trees planting are: pre-planting mechanized chemical cleaning, mechanized soil tillage, mechanized fertilization, planting, mechanized and semi-mechanized irrigation, and replanting.

Planting can be carried out in reform areas (where an Eucalyptus planting already exists), or in implantation areas (where there is no Eucalyptus planting). Suzano only implants forest in areas not covered by native forests.

Soil is prepared using minimum tillage, which consists in preparing strips of soil in the planting line. About 70% of the land remains undisturbed, which favors the maintenance of soil characteristics, avoiding erosion and loss of organic matter.



In 2020, FBU-BA acquired **2,675 ha (implantation)**, **20,229 ha (renovation)** and **7,698 ha (regrowth)**, totaling **30.602 ha**

In 2020, the annual harvest volume was

8.723.069 m³

Forest Maintenance

This stage consists in a set of activities carried out between planting and harvest (5 to 7 years) to ensure growth and productivity.

The main forest maintenance activities are: manual or mechanical mowing, chemical or mechanical weeding, fertilizing, control of leafcutter ants, prevention of forest fire and diseases and pest control.

Trucks equipped with telemetry

FBU-BA uses precision technology for operational management.

The truck fleet has telemetry for operation and distribution monitoring, and fleet tracking on company's roads and farms, loading and unloading control, besides contributing with our partners in safe operation management, with driver's working day monitoring and the detection of possible speed limit deviations.

With this system, Suzano strengthens the daily routine management culture among logistic operation partners, maximizing people's safety standards and operational efficiency, with a trustworthy database.

Harvest

As soon as the forest reaches its ideal point, timbers are harvested to supply the industrial plant. Harvest encompasses all the processes from tree harvest to the disposition of logs (cutting, forwarding, stacking and fueling), up to the point where they can be transported by trucks or any other transportation mode.

During harvest, eucalyptus trees are cut toward the center of the plot, avoiding any possible damage to the native forest.

Timber Transportation

Forest Logistics main responsibility is to transport timbers from the forest areas to the Industrial Units. The harvested timbers are transported according to the Annual Transportation Planning. From this planning, loading, routes and trucks distribution are defined considering the requirements defined on the area's operational procedures.

The routes for timber transportation are defined in agreement with Suzano's Sustainability sector in order to minimize the possible impacts of forestry activities on the neighboring communities.

The annual volume of timber transported to the industry in 2020 was

5.150.000 m³



Suzano is
committed to
**Health
and Safety**



Road Networks - Roads

The road network in the forest area comprises municipal and state roads, arterial, collectors and firebreaks, whose maintenance is defined according to the company's internal criteria to secure forestry operations and avoid erosive processes in the conservation areas.

- Drainage works, such as containment boxes, are built to store rain water and avoid erosion on the roads.
- Existing roads are repaired and new roads can be opened to improve operation quality and safety.
- Firebreaks are kept to secure the access of fire brigade teams.

Moistening of Roads

To keep the road wet during certain earthworks, the company uses a tank truck. The goal is to reduce dust around houses and settlements caused by the traffic of trucks transporting timber to the company.

Water collection for the road moistening is granted by the competent bodies.

Road Safety

*Suzano respects and values
its professionals.*

Therefore, health and safety are the company's permanent commitment. Suzano maintains a set of rules that guides its employees and the carriers' employees into safer driving habits, protecting everyone's lives.



Forest Integrity

Prevention and forest fire combat receive great attention from Suzano's staff involved with forest productive processes.

The company provides frequent training to the Forest Fire Brigade teams, which monitor the company's premises and are capable of assisting firefighting in the surroundings.

We carry out Forest Protection work along with the competent authorities, aiming to reduce the Forest Fire incidents, as well as to other issues found within the premises.

To keep our forest plantation and environment conservation areas, we count on the daily monitoring of the Property Surveillance Staff and cameras to indicate problems and fires.

The Forest Fire Brigade acting on the plantation and conservation areas, consists of the property surveillance with the forest fire activities with the proposition of working preventively, by monitoring the areas and an effective readiness to act upon call of forest fire.



Live Forest Program

raises awareness among collaborators and community on the impacts and dangers of fire

Suzano invests in awareness by distributing reading material such as educational folders, regarding the dangers of fires and wild fires.

Among these roles we can mention environmental monitoring, property surveillance and environment conservation lectures in schools and community centers surrounding our forests.



Safety and Protection of forest areas

Suzano has, in Bahia and Minas Gerais, an Electronic forest fire monitoring system in Espírito Santo with monitoring towers with 360° vision operated by 1 central stations. This system covers over 95% of the forest area, including the plantation and environment conservation areas.



Teams location



Daylight incident detection



Night incident detection



Detection of pests and diseases

Tank-trucks



3 Surveillance centers operating non-stop



39 towers equipped with mobile and fixed cameras on BA and ES units



Fire brigade





10.

Environmental Management

10.Environmental *Management*

High Conservation Value Areas

The term High Conservation Value Areas (HCVA) was created along with the standards for the forest management certification and refers to the areas with high environmental or social relevance for conservation.

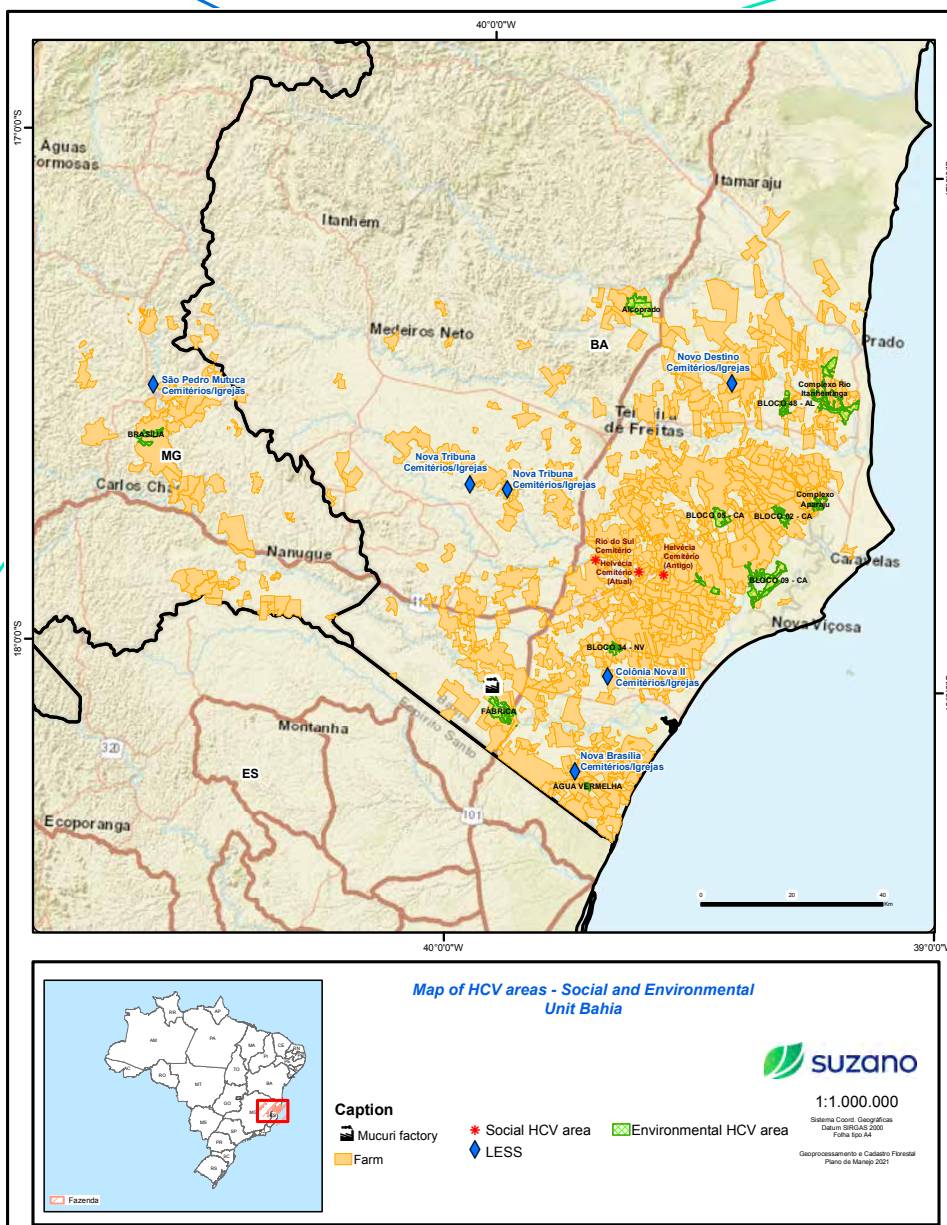
Examples are: Native forests that house endemic (that can't be found anywhere else) or endangered animals and plants, and forests that provide essential resources for the local population.

Suzano uses this concept to guide its conservation efforts, evaluating the HCVA's present in its areas according to: biological, ecological, social or cultural value considered remarkably significant or of extreme relevance at national, regional or global level. These are the values to be protected.

The company uses, as reference, attribute criteria adapted from the High Conservation Value Resource Network, HCVRN, 2018 edition.

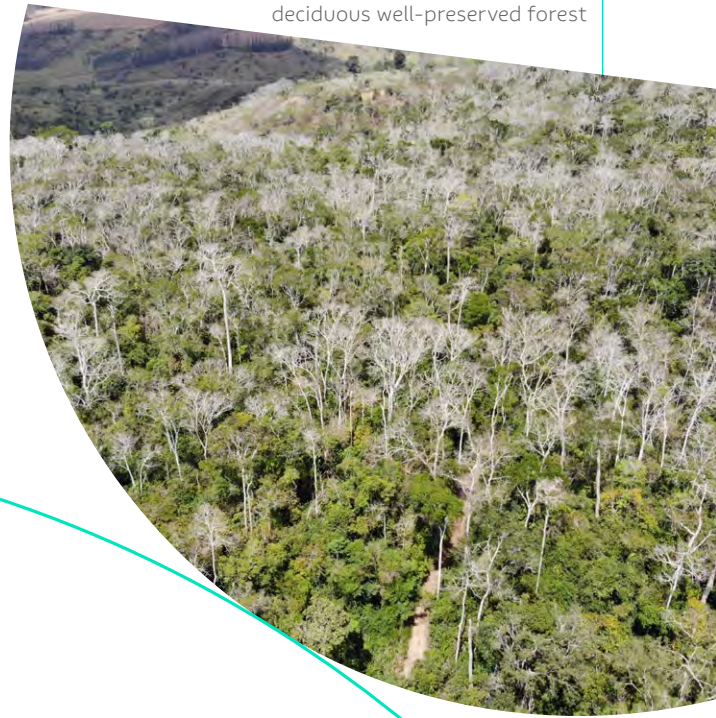
Suzano BA identified
12 environmental HCVA's

in its premises with a total of 11.8 thousand hectares, 3 social HCVA's and 6 LSI (Location of Special Interest)

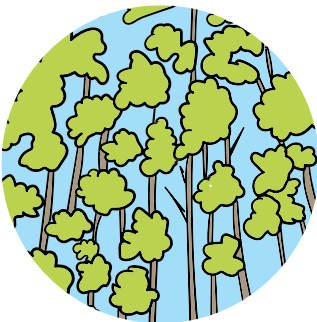


Consultation of Stakeholders

Suzano had a consultation with its stakeholders, according with the criteria to identify HCVAs and LSIs (Location of Special Interest), aiming to develop management regimes for the HCVAs and LSIs as per their efficiency.

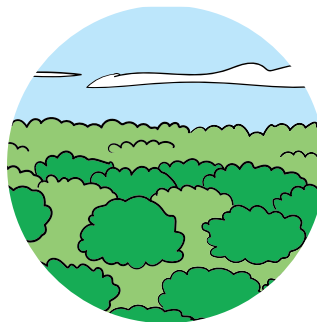


The key to identify an area as being of high value is to find if it holds one or more High Conservation Values as described below:



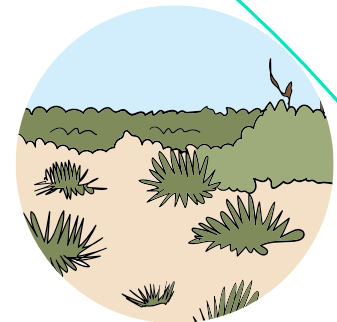
HCV 1

Areas containing significant concentration of biodiversity values.



HCV 2

Extensive and preserved areas of native vegetation, of global, national or regional biodiversity relevance.



HCV 3

Areas inside of or including rare ecosystems, threatened or in danger of extinction.



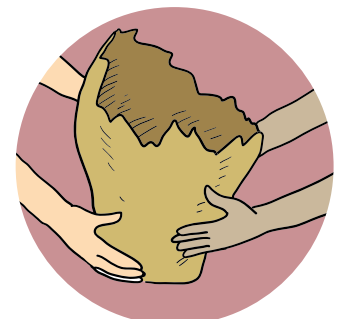
HCV 4

Areas capable of promoting environmental services in critical scenarios, such as watersheds and erosion control.



HCV 5







Important areas to serve communities basic needs, such as those related to health and livelihood.




HCV 6

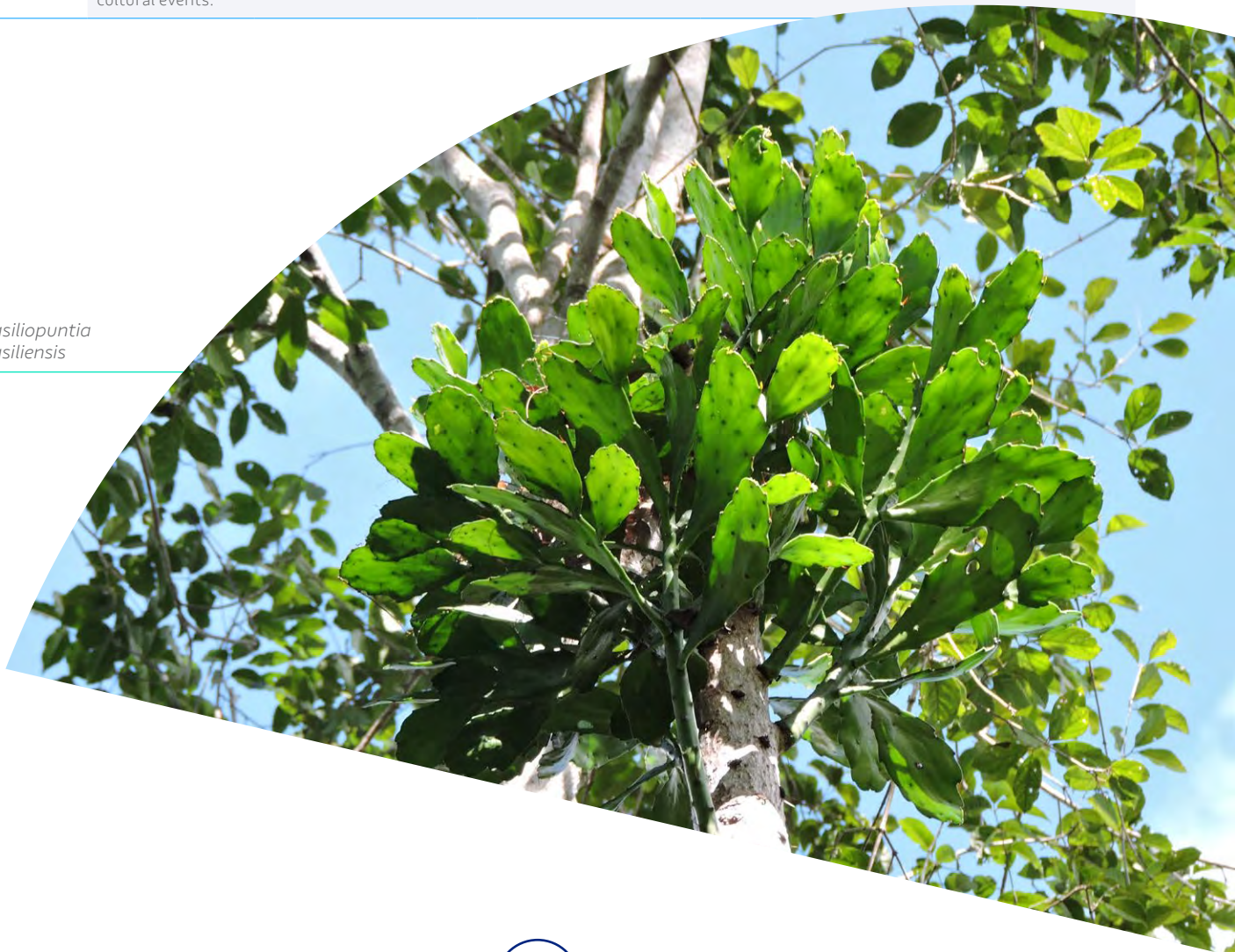
Important areas for community's traditional cultural identity.

Measures of protection and monitoring actions of HCVA's and LSIs

High Conservation Value	Characteristics	Risks and Threats	Impact	Protection Measures	Monitoring
					
HCV 1	Species that are endemic, rare, threatened or in danger of extinction in a global, national or regional level.	<ul style="list-style-type: none"> Illegal practices: <ul style="list-style-type: none"> Fires; Theft of timber and native plants; Theft of minerals; Poaching; Livestock presence; Illegal waste disposal; Trespassing and others. Exotic species invasion; Improper management of bordering areas; 	<ul style="list-style-type: none"> Biodiversity loss; Damage to individuals in bordering areas; Ecosystem unbalance; Gene flow behavior; Disturbance of animals. 	<ul style="list-style-type: none"> Property surveillance; Deployment of fire combat preventive measures; Environmental Restoration; Environmental/operational training to staff and Environmental Education to the communities; Implementation of signboards identifying the HCVA and presenting the illegal practices; Identification in the operation map; Social Environmental Recommendations / PPS (Partnership for Sustainability). 	<ul style="list-style-type: none"> Anthropic actions: Monthly Avifauna: Three-year Mammals: Three-year Flora: Four-year Ground cover per satellite image: Annual
HCV 2	Significantly extensive area in a global, national or regional level, with viable populations of native species.	<ul style="list-style-type: none"> Illegal waste disposal; Trespassing and others. Exotic species invasion; Improper management of bordering areas; 		<ul style="list-style-type: none"> Implementation of signboards identifying the HCVA and presenting the illegal practices; Identification in the operation map; Social Environmental Recommendations / PPS (Partnership for Sustainability). 	<ul style="list-style-type: none"> Anthropic Actions: Monthly Ground cover per satellite image: Annual
HCV 3	Ecosystems, habitats or refugees of rare or threatened biodiversity or in danger of extinction.	<ul style="list-style-type: none"> Operational damage to the vegetation. 		<ul style="list-style-type: none"> Identification in the operation map; Social Environmental Recommendations / PPS (Partnership for Sustainability). 	<ul style="list-style-type: none"> Anthropic Actions: Monthly Ground cover per satellite image: Annual
HCV 4	Areas capable of promoting environmental services in critical scenarios.	<ul style="list-style-type: none"> Illegal practices: <ul style="list-style-type: none"> Fires; Theft of timber and native plants; Theft of minerals; Livestock presence. Invasive species; Erosion and sedimentation. 	<ul style="list-style-type: none"> Reduction of native ground coverage; Soil loss; Soil compaction; River silting; Reduced water availability; Worsened water quality. 	<ul style="list-style-type: none"> Property surveillance; Anthropic Actions: Monthly Deployment of fire combat preventive measures; Environmental Restoration; Environmental/operational training to staff and Environmental Education to the communities; Implementation of signboards identifying the HCVA and presenting the illegal practices; Identification in the operation map; Social Environmental Recommendations / PPS (Partnership for Sustainability); Water usage (. demand from stakeholders) 	<ul style="list-style-type: none"> Anthropic Actions: Monthly

High Conservation Value	Characteristics	Risks and Threats	Impact	Protection Measures	Monitoring
					
HCV 5	Fundamental areas to fulfill the local communities basic needs (subsistence, health).	<ul style="list-style-type: none"> • Property damage and depreciation; • Operational damage; • Water availability; 	<ul style="list-style-type: none"> • Water shortage; • Depreciation and loss of cultural identity; • Disfigurement of cultural, traditional, ecological or religious importance locations. 	<ul style="list-style-type: none"> • Property surveillance; • Special attention to firefighting (PROFLOR); • Roads and fire roads maintenance; • Environmental education actions; • Access granting guarantee; • Implementation of signboards identifying the HCVA or LSI; • Open talk with the community; • Identification in the operation map; • Maintenance of physical structures. 	Quarterly
HCV 6	Area of utmost importance to the traditional cultural identity of the local communities (areas of AVC 6 cultural, ecological, economical or religious importance, identified with these communities).	<ul style="list-style-type: none"> • Fires; • Deforestation; • Loss of access to resources and cultural values. 			
LSI (Location of Special Interest)	It is a natural, anthropic area with infrastructure used by communities for cultural events.				Biannual

Brasiliopuntia brasiliensis



Biodiversity Monitoring

At Suzano, Biodiversity Monitoring is understood as the follow up of development and changes in the landscapes and fauna and flora communities' components and parameters, aiming to assess the effects of forest management on the environment.

Fauna

The primary data consist of information gathered in previous monitoring that complement the primary data gathered in the field in Suzano's areas. In 2020, biodiversity was monitored in an integrated way, encompassing the states of Bahia, Minas Gerais and Espírito Santo.

At Mucuri unit, 12 HCVA are part of the biodiversity monitoring program *Bloco 9 I-II, Bloco 9 III- IV, Fábrica, Água Vermelha, Bloco 34, Bloco 5, Bloco 2, Bloco 48, Alcoprado, Complexo Rio Itanhentinga and Complexo Aparaju*, located in Bahia, and Brasília, located in Minas Gerais. Besides that, the eucalyptus planting area in *Fazenda Pedra Azul* is also monitored.

The Campo Troupial (*Icterus jamacaii*) was seen at HCVA Panorama

Birds accounted for 462 species appearing in the FBU's database. Last monitoring, in 2020 recorded 227 species.

Medium and big size mammals sum up to 66 species, which 24 of those have been identified in the last monitoring, carried out in 2020.

Last monitoring recorded species



462

Birds species



66

Mammals species



27

Reptile species



1.001

Plants species



37

Amphibian species

Flora

Within the flora monitoring, 1,001 species were recorded. Last monitoring, in 2020 recorded 348 species of flora.

With the vegetation and fauna inventory in the company's area, it's possible to develop recommendations to keep and/or improve the conservation of species, such as environment restoration of priority areas and protection against fire. Continuous monitoring generate knowledge based on the improvement of environment management techniques, contributing to local biodiversity preservation.

Among the species identified in this 2020 monitoring, the chart below presents the species per the danger of extinction according with the IUCN's Red List OF Threatened Species and the National List (IBAMA).

Number of threatened species identified during the last monitoring in 2020

28
Flora
species

22
Birds
species

8
Mammals
species

The Mucuri Unit flora presents a diversity of
1,001 species



*Threatened species identified by the monitoring
of fauna and flora at the FBU-BA*

Group	Species	Popular name	IUCN Red List	National List MMA (Ministry of the Environment of Brazil) list	The State of Bahia's list	The State of Minas Gerais' list
Birds	<i>Amadonastur lacernulatus</i>	White-necked hawk	VU	VU	-	CR
	<i>Amazona farinosa</i>	Southern mealy parrot	-	-	VU	CR
	<i>Amazona rhodocorytha</i>	Red-browed amazon	VU	VU	EN	EN
	<i>Amazona vinacea</i>	Vinaceous-breasted amazon	EN	VU	CR	VU
	<i>Aratinga auricapillus</i>	Golden-capped parakeet	-	-	-	-
	<i>Attila spadiceus uropygiatus</i>	Bright-rumped attila	-	VU	-	-
	<i>Campephilus robustus</i>	Robust woodpecker	-	-	VU	-
	<i>Celeus torquatus tinnunculus</i>	Ringed woodpecker	VU	VU	-	CR
	<i>Chiroxiphia pareola</i>	Blue-backed manakin	-	-	-	-
	<i>Circus buffoni</i>	Long-winged harrier	-	-	-	-
	<i>Crypturellus variegatus</i>	Variegated tinamou	-	-	-	EN
	<i>Cyanoloxia brissonii</i>	Ultramarine grosbeak	-	-	-	-
	<i>Glaucis dohrnii</i>	Hook-billed hermit	EN	EN	CR	CR
	<i>Glyphorhynchus spirurus</i>	Wedge-billed woodcreeper	-	-	-	-
	<i>Melanerpes flavifrons</i>	Yellow-fronted woodpecker	-	-	-	VU
	<i>Procnias nudicollis</i>	Bare-throated bellbird	VU	-	VU	EN
	<i>Ramphastos vitellinus ariel</i>	Channel-billed toucan	EN	-	-	-
	<i>Rhynchocyclus olivaceus</i>	Olivaceous flatbill	-	-	-	EN
	<i>Schiffornis turdina</i>	Brown-winged chifforis	-	-	-	VU
	<i>Touit surdus</i>	Golden-tailed parrotlet	VU	VU	-	CR
Mammals	<i>Xipholena atropurpurea</i>	White-winged cotinga	VU	EN	-	-
	<i>Xiphorhynchus guttatus</i>	Buff-throated woodcreeper	-	-	-	-
	<i>Alouatta guariba guariba</i>	Northern brown howler	CR	CR	CR	CR
	<i>Callicebus melanoichir</i>	Coastal black-handed titi	VU	VU	VU	EN
	<i>Herpailurus yagouaroundi</i>	Jaguarundi	-	VU	-	-
	<i>Leopardus wiedii</i>	Margay	-	VU	EN	EN
	<i>Puma concolor</i>	Cougar	-	VU	VU	VU
	<i>Sapajus robustus</i>	Crested capuchin	EN	EN	EN	EN
	<i>Dicotyles tajacu</i>	Colared pecari	-	-	-	VU

Group	Species	Popular name	IUCN Red List	National List MMA (Ministry of the Environment of Brazil) list	The State of Bahia's list	The State of Minas Gerais' list
Flora	<i>Annona bahiensis</i>	Pinha-do-mato*	VU	-	-	-
	<i>Rauvolfia capixabae</i>		EN	-	-	-
	<i>Euterpe edulis</i>	Içara*	-	VU	-	-
	<i>Hirtella insignis</i>		-	EN	-	-
	<i>Joannesia princeps</i>	Arara nut-tree	VU	-	-	-
	<i>Dalbergia nigra</i>	Brazilian rosewood	VU	VU	-	-
	<i>Inga grazielae</i>		VU	VU	VU	-
	<i>Inga hispida</i>		VU	-	-	-
	<i>Inga unica</i>		VU	VU	-	-
	<i>Melanoxylon brauna</i>	Brauna	-	VU	-	-
	<i>Miconia lurida</i>		EN	-	-	-
	<i>Trichilia casaretti</i>		VU	-	-	-
	<i>Trichilia silvatica</i>		VU	-	-	-
	<i>Mollinedia lamprophylla</i>		CR	-	-	-
	<i>Sorocea guilleminiana</i>	Bainha-de-espada*	VU	-	-	-
	<i>Sorocea longipedicellata</i>		CR	-	-	-
	<i>Campomanesia espiritosantensis</i>		VU	CR	-	-
	<i>Myrcia gigantea</i>		EN	-	EN	-
	<i>Myrcia obversa</i>		VU	-	-	-
	<i>Myrcia riodocensis</i>		EN	CR	-	-
	<i>Myrcia sucrei</i>		VU	-	-	-
	<i>Rhamnidium glabrum</i>		-	VU	-	-
	<i>Alseis involuta</i>		-	VU	-	-
	<i>Palicourea fulgens</i>		-	VU	-	-
	<i>Banara brasiliensis</i>		VU	-	-	-
	<i>Chrysophyllum splendens</i>	Bapeba*	VU	-	-	-
	<i>Pouteria coelomatica</i>	Bapeba-branca*	EN	VU	-	-
	<i>Homalolepis floribunda</i>		CR	-	-	-

*Popular name found only in Portuguese

Tropical kingbird
(*Tyrannus melancholicus*)



In 2020,
were monitored
34 spots in Bahia
and 22 in Minas Gerais,
in 17 watersheds

Water Resource Monitoring

Suzano evaluates the effects of its plantings on the quality and quantity of water resources through a representative monitoring network according to the scale and intensity of plantings.

One of the mechanisms applied for the maintenance of water resources is based on natural control developed across evolutionary processes of the landscape. One example is the well-known relationship between forest coverage and water resources, mainly on Permanent Preservation Areas, aiming to comply with legislation and the conditionals of forest operation licenses.

From the lab results it's possible to build an assessment of the monitored areas, in order to set a possible relation between the eucalyptus plantation areas and the surface and underground water conditions located in its area of influence.

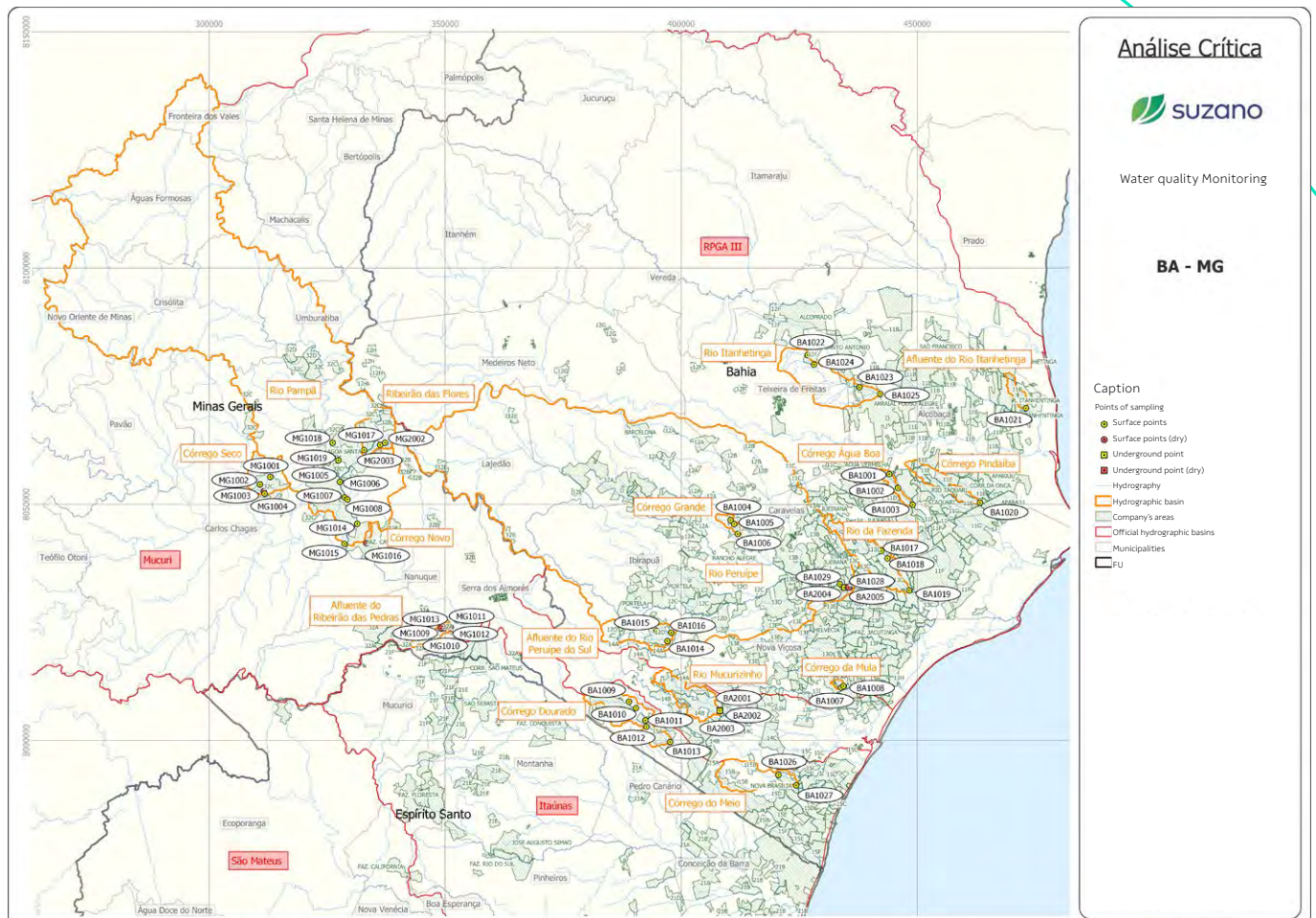
This program's execution consists of two monitoring campaigns. These campaigns gather quality-quantity data over the surface and underground water in areas near eucalyptus plantation using in situ measurement of some parameters and collecting laboratory analysis samples.

The quality results and water flow demonstrate that there's no negative impact to the environment which could be blamed on the eucalyptus plantation.

Below there's a map of the official watersheds, sub-basins and monitored sampling spots in the states of Bahia and Minas Gerais.



Small watersheds location (BA and MG) and water quality monitoring spots



Environmental aspects and impacts of forest management

Suzano is committed to adopting the best environmental practices to innovate in promoting a sustainable development.





Focusing on process sustainability, the company uses managerial instruments and tools that provide better environmental quality in its forestry activities. Managing environmental aspects and impacts, the FBU defines methodologies for the identification, assessment and control of environmental aspects and impacts (of its services, activities and products), seeking to minimize all possible adverse impacts and strengthen the beneficial ones.

Environmental aspects and impacts of forestry processes are identified and assessed considering:

- The new laws that apply to the business;
- Compliance with the current law;
- Regulatory marks;
- Obligations resulting from agreements and voluntary certifications;
- Change management for new products, services, activities and equipment.

Once identified the environmental aspects and impacts, mitigation, control and monitoring actions are established.

Examples of environmental aspects and impacts of forest management

Type of impact	Adverse	Adverse	Beneficial	Beneficial
Environmental Aspect	Water consumption 	Risk of fire 	Carbon sequestration 	Improvement of ecological processes 
Environmental impact	Scarcity of water resources.	Alteration in the physical properties of the soil.	Reduction of Greenhouse effect.	Recuperação da Biodiversidade.
Control measure	<ul style="list-style-type: none"> • Dedicated physical devices and controls to adjust and control the amount of water used; • Use of rainwater. 	Fire control systems and fire brigade teams.	CO ₂ sequestration by forestry production and conservation areas.	<ul style="list-style-type: none"> • Restoration of degraded areas; • Conservation of PPA and LR.

Ecological Restoration

As part of our commitment with the environment, Suzano promotes restoration actions in its Permanent Preservation Areas (PPAs) and Legal Reserve (LRs) in the states it has operations in. It concerns on of the largest restoration programs in Brazil, with presence in the two-biodiversity hotspot biome - Atlantic Forest and the Cerrado - and, also, in the transition area Cerrado-Amazon.

To reinforce this commitment, the company is a signatory of the Atlantic Forest Restoration Pact, an initiative that aims to restore 15 million hectares in the country until 2050.

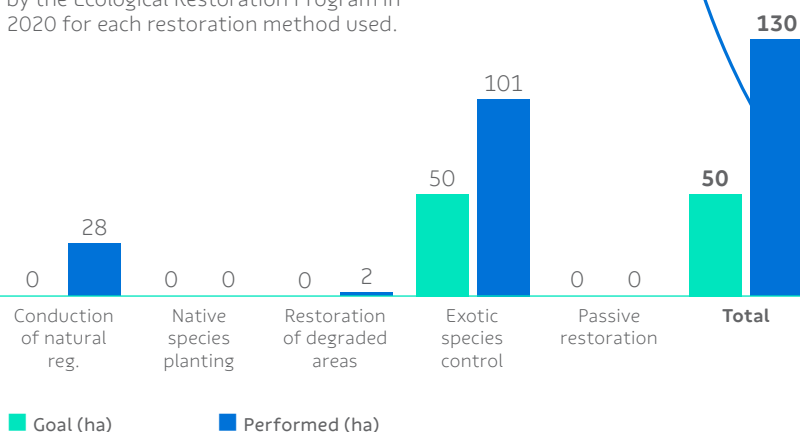
In 2020, 130.34 hectares were implanted, reaching the goal of 50 hectares. In addition to the implantation, maintenance was carried on 2,758 hectares in Bahia and Minas Gerais, including ant control, mowing, chemical weeding among others. In total, operations to eliminate exotic and invasive species were carried on 373 hectares, encompassing areas of forest and pasture to be recovered, to open way to implantation and maintenance transfers.

Every implanted areas are monitored to check the adequability of the techniques adopted and the need of management aiming to ecological succession and restoration.

The Ecological Restoration Program contributes with an increase in biodiversity and the creation of several environmental services in its area of operation using the following restoration methods: planting of native species seedlings from the Atlantic forest, implementation of natural regeneration, invasive species control, and isolation of protected areas. The best technique is defined according to the environmental conditions of the area to be restored, as well as its potential for regeneration, history of land occupation and possible degradation factors.



The following Graph shows anticipated area (goal) vs area worked by the Ecological Restoration Program in 2020 for each restoration method used.



Since 2010,
13,100 ha
of restoration were
deployed in FBU-BA areas

Solid waste management

Suzano's Solid Waste Management procedure adopts practices to classify, separate, store, collect, transport, and dispose of waste produced in forestry operations and activities, aiming to:

- Reduce waste production;
- Reuse of residues, optimizing its use before disposal;
- Recycle residues;
- Adequately process waste;
- Ensure the proper disposal.

Waste management in the forest areas is performed according to the effective legislation. Waste is forwarded according to its classification to recipients that undergo a rigid process of evaluation and approval, Class I waste (Hazardous) might be sent for co-processing, recycling and licensed Class I landfills, Class II waste (non-Hazardous) are sent for recycling or licensed landfills, depending on its physical characteristics.

Packages of pesticides used in forestry operations are sent to licensed Empty Crop Protection Packages Receiving Units for reverse logistics.

Waste management steps

Waste recipients go through evaluation and *approval*



Sorting



Temporary storage



Transportation



Final Disposal

- Recycling
- Reuse
- Reverse logistics
- Co-processing
- Licensed landfill

Ecological training

The Environmental Training Program propagates information and environmental practices to raise awareness among its participants over sustainable and transformational behavior of the social environmental reality.

To reach the internal and external audiences, this Program was divided in different projects and activities in line with the reality of each target audience.

Rio Preto's FLONA Program

This initiative is a partnership with *Rio Preto's* FLONA and its objective is to serve students from the north of Espírito Santo and far south of Bahia. From the beginning of the project, in 2017, 4,293 students took part in it.

Extractives PEA

Program oriented towards the traditional extractive communities of Caravelas and Nova Viçosa. In 2020, were developed activities in different lines of action, targeting a great audience, from the fisherman to their families.

Internal Environmental Training

Program that targets Suzano's employees and collaborators. In 2020, 33 trainings were offered.



PEA Caravelas -
Ciranda Cirandinha Project



Mucuri Headwater Project

In 2017, the Mucuri Headwater program was implemented with the objective of perpetuating the Mucuri river, thus fostering the preservation of its headwaters and surroundings.

This place was chosen due to the remaining Atlantic Forest vegetation and its high relevance to the survival of the Mucuri River, even though there aren't any units of Suzano in the area where the project is being developed.

It concerns one of the most diversified biomes and one of the most threatened in the planet given that it's the water source for our operations in Mucuri and to hold an asset for which many communities and economic activities rely on the Mucuri river watershed.

The river is born in the northeast of Minas Gerais and drains in the south of Bahia, running for 446 kilometers in an area with some 15,400 square kilometers and 537 thousand residents. In the last few years, the region has been suffering with the river water flow reduction, a result from deforestation and resulting in water resource degradation, with marsh, water heads and water course silting. The drought hit the region and compromised the population's water supply, which, living in municipalities of limited infrastructure, resorted to alternative sources from outside, and impacted livestock producers and local fishermen, who had to be away from their activities and thus affecting their income.



Figures until 2020



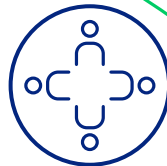
402

headwaters under restoration



+30 thousand

seedlings planted



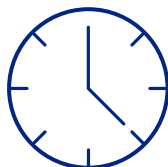
+ 15,625

people engaged



1,505

rural properties visited



2,634

hours dedicated to social environmental education



14

Financial and institutional partners

State Institute of Forests (LEF - Instituto Estadual De Florestas); Environmental Protection Area Alto do Mucuri; Banco do Nordeste; Hydrographic Basin Committee Alto do Mucuri; Municipal Council for Sustainable Rural Development Ladainha; CMDRD Malacacheta; Colmeia Poté; Emater Ladainha, Malacacheta, Poté and Teófilo Otoni; Gepaf – UFVJM; IFNMG Teófilo Otoni and São João Evangelista; Ima; Ong Pro Rio Todos os Santos and Mucuri; Environment Police Malacacheta and Teófilo Otoni; Funai (National Indian Foundation)

The Mucuri river runs for **446 Km** between the northeast of Minas Gerais and the south of Bahia

From this scenario, the Mucuri Water Heads promotes environmental education and qualification of the local producers to consolidate a preservation culture.

In 2020, we gave continuity to the evolution and improvement of the project, when we worked strong with the agricultural families and in the way the use the land, because we believe that it's important to care not only for the environmental assets, but also the families living in it and which could develop activities of great environmental impact, should they perform agricultural activities that are not suitable.

In that sense, 150 families have started what we call agroecological transition plan, methodology brought from our Rural and Territorial Development Program (PDRT), already consolidated in many Brazilian states. With this improvement, we believe in a wider economic, food and environmental safety to the properties in the northeast of Minas Gerais, where the Mucuri watershed is located.



More than
20 families
already initiated
the agroecological
transition plan



11.
Acknowledgement Of
and Respect for
Professionals

11. Acknowledgement Of and Respect for Professionals

Safety, Health and Quality of Life

The valuation of, and respect for, professionals are Suzano's commitment. Safety and health management is one of Suzano's priorities. The company encourages all individuals to take responsibility for safety and spares no resources to further reduce the rate of accidents.

The Occupational Health and Safety Management program provides guidance on the registration of events in and outside the company, providing the Safety Department with the elements required for the development of awareness campaigns that extrapolate the management boundaries and contributes significantly to the quality of life of employees, their families and the communities surrounding Suzano's areas of operation.

Checking and ensuring work safety and health conditions, as well as the use of safety devices, are also covered by the collective agreement signed with the employees' representative entities. All events related to the employees health and safety are registered and monitored based on a corporative standard for the communication of accidents, incidents and occupational disease.

FBU-BA Forest operations safety performances

Safety indicators	2020
Rate of accidents with and without lost work days	0.52
Rate of accidents with and without lost work days	48
Serious injury rate	99%

Programs developed by Suzano to ensure safety at work involve the preparation of documents that seek to identify the risks associated with operations, such as the Environmental Risk Prevention Program (PPRA), Preliminary Risk Analysis (APR), Work Risk Observation (OPA), Safety in the Area, and work permits.

All activities are checked and monitored for below-standard conditions and practices (*Fique Alerta / DNA - "De Olho na Área"*) and approached by programs as the Program for Medical Control of Occupational Health (PCMSO). The system is composed of different groups and committees that help monitoring and provide guidance on safety and health conditions. The initiatives aim to establish and maintain a responsible and transparent relationship with all employees in order to adopt the best existing practices in the industrial, forestry and administrative units. This process helps to build Suzano's reputation among its key relationship public and seeks to explore synergies and to better employ our professionals talents.



Workforce Qualification

The company contributes to the generation of local jobs by improving the economic activities in the region of operation.

Our collaborators and vendors are offered personal and professional development opportunities. All collaborators take part in training activities that address not only technical aspects of the operation, but also subjects such as ethics and human rights. The welfare of every employee and level of satisfaction with the company are also closely monitored through organizational surveys.

The company conducts a structured process of integration of new employees and permanent vendors that aims to facilitate their adaptation into the work environment, the organizational culture, concepts and drivers, environmental conservation, code of conduct, the management system and stakeholders relationship.

Suzano has a benefits policy aligned to the good practices of the market and to its employees' expectancies. The benefits granted represent a significant value for the company and its employees, and are managed in order to ensure the best quality level and provide comfort and satisfaction.

Job creation at FBU-BA Forestry Unit

Own*	1,314
Vendors*	1,312
Total	2,626

*December/2020 data





12.

Social

Management

12. *Social* Management

Suzano prioritizes a clear and straightforward work toward social aspects directly or indirectly affected by its forest management activities.

With this end, the company considers a set of specific actions aimed at the different audiences influenced by its activities.

PDRT
Mucuri - BA



Stakeholders Relationship Management

Suzano's relationship strategy is to ensure social and business legitimacy through the long-term strengthening of its interaction with neighboring communities and the integration of its interests into forestry business management.

Suzano's relationship with communities surrounding its operations follows the following approach:



1. Priorization Matrix

Process of characterization of the area where Suzano is present to guide the activities with social impact to be adopted in each case. This study provides an assertive guidance for social investment and other actions for local engagement.



2. Engagement

Structured, inclusive and continued relationship, where the company plays the role of a partner toward the local development.

Takes place on the communities most impacted by Suzano's operation. In rural communities, engagement is promoted by the Rural and Territorial Development Program (PDRT), Beehives Program, among others.



3. Operational Dialog

Channel for direct communication through which the company informs the residents of neighboring communities about the forestry operations scheduled in that region according to an annual planning of activities, and discusses impacts and mitigation actions.

This process also integrates annual visits to ensure a continuous relationship with the neighboring communities.

PDRT Bela Vista -
Nova Viçosa - BA

Management of social impacts

Suzano understands "social impacts in the communities" as any changes (harmful or beneficial) caused entirely or partially by its forestry operations within three kilometers radius of its properties or areas leased for eucalyptus production.

The management of social impacts model seeks to eliminate, reduce or compensate the negative impacts through management practices, socioenvironmental investment, and continuous control and mitigation actions.

Despite all measures taken to prevent and mitigate adverse impacts, unpredictable losses and damages can still occur, directly affecting the communities resources or livelihood. In this case, these losses and damages are compensated and mitigated, in common agreement and according to the particularities of each case, in a fair and balanced way.

In the following, examples of adverse social impacts from forestry management and the corresponding mitigation and prevention measures are presented. For conflict resolution, disputes and compensations involving rights of use, possession and control of the land, the company has defined directives that prioritize a friendly and fair solution for the parts.

Examples of adverse social impacts and controls

Activities	Social Impacts	Preventative and mitigating measures
Application of crop protection products	Inconvenience caused by drift* to neighboring areas	<ul style="list-style-type: none"> • Use of products authorized by the environmental bodies • Signaling of the areas • Training of employees that apply the products • Maintenance of equipment use for application
Forest harvest	Increase in the risk of accidents	<ul style="list-style-type: none"> • Use of up-to-date equipment and trained and qualified teams • Signaling and guidance offered to the community to prevent people from approaching machinery during operation
Timber transportation	Change of landscape (visual) and loss of reference	Placement of warning signs
	Increase in the risk of accidents	<ul style="list-style-type: none"> • Reduced and controlled velocity • Compulsory stops to check and tighten the load • Safe driving voluntary campaigns
	Dust	Reduction of dust with moistening of the roads (tank trucks)
	Damage of the road network	<ul style="list-style-type: none"> • Road maintenance during operations • Monitoring and control of load weight of the timber trucks
	Noise	Negotiation of time period for the operations

**Drift: phenomenon of spray drops carry-over by the wind (EMBRAPA)*

Analysis and monitoring of stakeholders relationship processes

All the demands concerning forestry operations, identified in the engagement processes, operational dialogs and participative agenda are critically assessed and validated by the operational areas to review the social impact matrix and improve Suzano's forest management.

Effectiveness of the socioenvironmental impacts mitigation actions

Area	Category	Name of Monitoring	Indicator	Results 2020
Social	Impacts on the Communities	Investment in the Community (GRI EC1)	Socioenvironmental investments	R\$ 8,019,814.14
			Communities/localities benefited by all projects of the Unit	66
		Operational dialog and Participative agenda	Rate of fulfillment of the annual dialog program	100%
			Rate of satisfaction in occurrences solutions	91%
			Rate of effectiveness of mitigation actions	95.13%
		Complaints about damage caused by management	Number of complaints received	46
			Average time to address a complaint	98 days

*Indicator "Share of donations in socioenvironmental investment (%)", presented in 2019 was integrated into "Socioenvironmental investments (R\$)" of 2020.

**Indicator "Suzano's favorability in the communities (%)" presented in 2019 was not tracked in 2020.



PDRT Program

Socioenvironmental Investment

The Social Environmental Investment is the voluntary transfer of private resources, in a planned and monitored manner, to social, environmental and cultural actions and projects of public interest, that contribute to the development of communities where Suzano has operations. Such investments are segmented into four types of intervention, as per follows:

Cooperation

Specific actions that entail a return from the solicitor and the use in community assets. Obligatorily are requests related to the needs of forest and industrial operations, to the expertise and products from Suzano's business.

Sponsorship

Provision of funds, equipment and/or service by a sponsor to a sponsored, with the objective of facilitate certain activity or event. Is a communication instrument, given that the main results expected are: visibility increase and sponsor brand favorability with the activity or event target public; the increase in the exposure of sponsor in the media; and being in contact with the direct and indirect stakeholders connected to the sponsor's business.

Donation

These are specific investments to serve the presented requests from non-profit institutions, agencies or community representatives and without compensation.

Project

Are social investments planned and developed within a certain program, having a determined proposal and time frame (objectives; goals; cost; deadlines; process, results and impacts milestones; and accountability).



*Lira Imaculada
Philharmonic Project
- Caravelas (BA)*

*Eco Suport Mucuri
Junior Company Project
- Nova Viçosa (BA)*

Socioenvironmental Programs and Projects

The Social Programs and Projects take place mainly in the identification of the enterprise influence level over the community, the Socioeconomic Aspects of each one (level of organization, vulnerability degree, etc.) and the partnership level (company and community). Arise also from the communication processes, in line with the social pillars of Suzano.

The extension in which such programs and projects are carried out, in the community, derive from the following factors:

- The communities and municipalities socioeconomic vulnerability;

- The influence of Suzano's forest management in the city and community areas;
- Relationship and social Investment history in the communities and municipalities;
- Number of directly affected communities by Suzano's forest planting in the municipality;
- Communities interest and availability in taking part in the programs and projects;
- Public authority's interest and availability to co-participate or supporting such programs and projects;
- Budget availability.

The lines of action in which the social projects may proceed vary between promoting education and culture to the community, regional development by means of income generation and improvement of the community relationship with the environment.



Juliana Mateus -
Juerana Community -
Caravelas (BA)

Outstanding Social projects of 2020

Food Basket Delivery

In face of the changes imposed by the coronavirus pandemic, Suzano launched, in April 2020, the initiative "A Feira Vai Até Você" - which translates "Greengrocery comes to you" - that aims to help the sales of small family farmers through delivery services.

The initiative came up as a way to mitigate this impact by connecting farmers to the end consumer through delivery services. 150 families of farmers are

benefited by this program in the municipalities of Caravelas, Alcobaça, Prado, Nova Viçosa, Mucuri and Teixeira de Freitas (BA) and Nanuque (MG).

This program has promoted the sales of over 41 tons of food in 2020 in the states of Bahia and Minas Gerais. With consumers adhering largely, it has delivered 5,700 baskets, which generated almost R\$265 thousand in gross income in 2020, contributing to reducing the economic impact of the pandemic on family agriculture in the region.



COVID-19 Emergency Tender

Considering the pandemic scenario of 2020, Suzano has launched, in June 2020, an emergency tender to support actions and initiatives that focus on the emergency needs of the population on areas where the company operates that have been directly impacted by COVID-19 in the states of Bahia, Espírito Santo, Minas Gerais, Para and Maranhão. With this initiative, Suzano has supported solutions that helped to mitigate or eliminate the challenges found.

Suzano defined the following entities as eligible to submit proposals:

- CSO acting locally;
- Cooperatives, except credit cooperatives;
- MEI (Individual Microentrepreneur) with at least 6 months of activity;
- Companies registered with Simples Nacional with annual revenue of up to 100 thousand reais.

The tender aimed to attend Line 1 (Prevention and Control of COVID-19) and Line 2 (Income and job generation in urban and rural environments).

The process took place through prepaid vouchers given to each candidate with the approved amount.

In the states of BA and MG,
28 proposals in Line 1 and
18 in Line 2 were awarded, totalling

46 proposals

List of localities participating in the BA and MG tender

Municipality	Community
Alcobaça	District of São José
	Sossego community
	Portela community
	Pedra D'água community
Caravelas	Municipality headquarter
	District of Juerana
	District of Rancho Alegre
Mucuri	Municipality headquarter
	District of Itabatã
	District of Cruzelandia
	District of Belo Cruzeiro
	District of Taquarinha
Nova Viçosa	Municipality headquarter
	District of Argolo
	Colonia Nova community
	District of Helvecia
Prado	District of Posto da Mata
	Municipality headquarter
	Oiteiro community
Prado	Inguai community
	Municipality headquarter

Brasil Bless Boutique

Community/Municipality: Sede / Caravelas –BA

Objective: To fill the stock through the purchase of merchandise (clothes) and ensure the continuity of the commerce during the pandemic period. The impact was positive since sales dropped approximately 65% on local and national stores closed due to the pandemic. With these resources, sales were boosted while respecting all safety protocols against COVID-19.

Community garden

Community/Municipality: Inguai / Prado – BA

Objective: This initiative aims to benefit women belonging to the Association of Rural Producers of the Inguai community through the implementation of a community garden, thus potentializing the local production chain and generating extra income for the families involved. “We are grateful to Suzano for this initiative in such a delicate moment with this Covid-19 pandemic. We will be forever grateful to the company and to the people who conceived it”, says one of the participants of the program.

S e Souza Distribuidora

Community/Municipality: Caxangá / Alcobaça – BA

Objective: Acquisition of a semi-automatic sealing machine for transition from manual process aiming to meet the demands of clients during the requested period and purchase of packing bags.

“With the resources from Suzano S/A’s emergency tender we were able to purchase a semi-automatic sealing machine, labels and packages for manioc flour. With this project we were able to expand our customer portfolio and meet the deadlines for the supply. I am nothing but thankful to Suzano for this program and partnership, which changed and is changing not only my story but my family’s.”



Social projects and programs

Project/Program	# of participants	# of municipalities	# of associations/entities	Results 2020
Rural and Territorial Development Program (PDRT)	1,411	8	50	In 2020, PDRT allowed the generation of over 13.9 million reais in products and food traded/consumed, relative to a production of about 8.8 million kg.
Colmeias Program	214	5	7	In 2020, Colmeias allowed the generation of over 680 thousand reais in products and food traded/consumed relative to a production of about 60 tons of products from apiculture and meliponiculture.
Basket Delivery*	150*	7*	7*	The program has boosted the commercialization of over 41 tons of food items in 2020, in the states of Bahia and Minas Gerais. With consumers adhering largely, it delivered 5700 food baskets, generating almost R\$265 thousand reais in gross income in 2020, a result that has helped to reduce the economic impact of the pandemic in family agriculture in the region.
Emergency Tender (Covid 19)	46	5	46	This tender aimed to attend Line 1 (Prevention and Control of Covid-19) and Line 2 (Income and job generation in the urban and rural environment). In the states of Bahia and Minas Gerais, 46 projects were awarded, being 28 in Line 1 and 18 in Line 2. This represented an investment of over 230 thousand reais.
Engaging fishing communities	2,900	4	13	In 2020, Engaging Caravelas enabled the strengthening and development of activities to improve the management process of associations and cooperatives regarding productive chain and commercialization.
Social Capital	794	4	6	In 2020, Social Capital enabled the continuity of the local entities' development acting on Education, Culture and Sports, aiding and strengthening their infrastructure, attendees and leadership during the pandemic.
Suzano's Education program	24	3	101	<p>Suzano's Education Program acts on engaging the secretariats for Education, schools, students, families and communities so they can face education challenges together and build collaborative solutions for these challenges. This program enabled expressive advancements in the territory, such as:</p> <ul style="list-style-type: none"> • Strengthening intersectoral collaboration and partnership within the education network; • Expansion of communication channels and engagement of students and their families; • Acknowledgement of the importance of collaboration between municipalities for the implementation of quality actions with a broader reach; • Promotion of continuous training for all education actors. This program has impacted over 21 thousand people in 2020.
Sustainable settlements	576	3	5	This project operates in 5 settlements, encompassing an area of 10,661.41 hectares with 576 families, approximately 2,300 people. All areas have been parceled and the families are settled in their own lots, with rural production and basic infrastructure.

*Amounts relative to Basket Delivery initiative are already integrated into PDRT and Colmeias results.

Project/Program	Description	Results 2020
Volunteering Program	<p>Guide for the remote volunteer</p> <p>In April 2020, in order to continuously inspire our volunteers, even in face of such a complex scenario, we launched the Guide for the remote volunteer, with volunteering actions that can be performed remotely, in a virtual environment. Among the actions developed we highlight virtual meetings for welcoming, entertainment, incentives to physical activity and knowledge-sharing, donations of food baskets and masks, and charity purchases.</p> <p>Volunteering in action</p> <p>During the National Volunteering Day, August 28, we hosted the 2nd edition of Volunteering in Action – a collaborative and charitable movement with the aim of strengthening the volunteering culture within Suzano and provide social protagonism to our collaborators so they are able to develop their own initiatives in the regions where we operate. The volunteering actions are directly linked to Suzano's long-term goals and with the Affinity Groups of Plural.</p> <p>Suzano at the school</p> <p>Developed in partnership with Junior Achievement since 2009, Suzano at the school has the objective of awakening the entrepreneur spirit of young people, sharing knowledge and experiences for an educational background, thus widening their views on the job market and the business world. In 2020, in face of the challenge imposed by the pandemic, this program was conducted online, allowing the volunteer participation of all Suzano's operations. Two initiatives were implemented: "The future of labor" and "Girl for IT – my first website".</p> <p>The future of labor</p> <p>The Future of Labor trains young people and provide concepts such as career, careers of the future, and skills for the market. On the first two editions we have impacted the employees and third service providers' families. On the third edition, young people from the communities in the nearby areas of our operations in Suzano (SP), Limeira (SP), Jacaré (SP), São Paulo (SP), Imperatriz (MA) and Mucuri (BA) were contemplated.</p> <p>Girl for IT initiative</p> <p>"My first website" targets women from 15 to 22 years of age in the region of Suzano (SP) and other young people who participated in other Volunteering programs in the state of São Paulo, Espírito Santo and Bahia. The objective is to prepare them to the digital transformation following the tendencies of our society. By the end of the program, the participants will have developed, individually, a responsive website in HTML and CSS on the topic related to the Sustainable Development Goals of the UN.</p> <p>People who promotes transformation – ENEM</p> <p>Pilot project of preparation for ENEM examination and professional mentorship with volunteers. Developed in partnership with Instituto Joule, the initiative has benefited young black people, strengthening our commitment to generate and share value through education and to foster diversity.</p> <p>Formare</p> <p>Developed in 2005, in partnership with Fundação lochpe, Formare provides qualification for the market for young people in social vulnerability with training in Process Operator. This project takes place on the units of Suzano (SP), Mucuri (BA) and Imperatriz (MA). Considering the pandemic scenario and all safety and health recommendations, we had to postpone Formare activities on the units of Suzano (SP), Mucuri (BA) and Imperatriz (MA) in 2020. To minimize the impact, however, Fundação lochpe –Suzano's partner on this project– reframed the selection process for an online version, that will be adapted on the first quarter of 2021. Even though there are no ongoing classes at the moment, our efforts were diverted into hiring students already graduated.</p>	<p>General</p> <p>165 volunteers (5% considering the basis of Headcount of People and Management) 2,376 people benefited</p> <p>Initiatives with volunteer participation</p> <p>22 volunteers: Guide for remote and virtual volunteering. 23 volunteers: Volunteering in action + 35 registered on Volunteering in Action Platform. Messengers of Goodness (independent action): sheltering of elderly people. Supportive Listening with the Elderly (independent action): sheltering of elderly people. 29 volunteers: The Future of Labor Online. 6 volunteers: People who promotes transformation – Enem. 01 volunteer: Girl For IT.</p> <p>Formare</p> <p>30 graduated students hired from Mucuri (BA) unit, 8 of them in the new operations of Cachoeiro do Itapemirim (ES).</p>

Forest management performance and main indicators

Aspect	Resp. Process	Monitoring	Monitoring indicators	Unit	Goal 2020	Actual 2020	Critical analysis	Actions	Systems/Database	Frequency
Economic	Harvest	Productivity of transportation	Productivity of FWs	m³/h	60.33	60.22	Less productivity when compared to the baseline plan but without significant losses.	Hiring of workforce for mobilized modules and insertion of trainee operators in the operation.	SAP, OneDrive and Power BI	Daily
		Productivity of harvest	Productivity of harvesters	m³/h	19.85	20.73	Greater productivity relative to the baseline plan. Strategies were adopted to increase machine productivity.	New machinery operating, use of development technician for feedback and qualification of operators; mechanical maintenance operating more intensively.	SAP, OneDrive and Power BI	Daily
Social	Social Development	Operational Dialog and Onsite Schedule	Participants from the affected communities – Operational Dialog	#	N/A	505	In 2020, given the pandemic, the operational dialog activities started to focus on phone calls. In specific cases, individual dialogs and/or onsite meetings were scheduled (obeying the recommendations of a limited number of participants, distancing, and use of masks and alcohol gel). The dialog was based on the Unit's micromanagement.	The indicator does not anticipate a goal because the number varies according to execution and planning of operations along the year. The measurement adopted by Social Development Management is the fulfilling of the planning and changes indicated by operation, considering communication and dialog with stakeholders.	SISPART Socioenvironmental Management Portal	Biannually Annually
	People and Management	Workforce	Hiring of local workforce	%	N/A	BA: 93 MG: 80	The state of Minas Gerais has 853 municipalities; the region where the company operates is not always consolidated in the forestry segment (e.g., mining, metallurgy) which causes the migration of professionals from other nearby regions or other states. In 2020, there were 138 admissions in the region of MG, 110 of which resided in the region and 28 in other states (ES, BA e MS). This means 80% of local workforce hirings. In 2020, there were 174 admissions in the region of Bahia, of which 162 collaborators resided in the region and 12 migrated from other states (MG, RJ e ES), which means 93% of local workforce hirings.	To publicize the job openings, in addition to the Kenoby system (career platform), other means of communication are being used, such as: partnership with Senai and Sine in the region and the Agrobase website (digital agency focused on agrobusiness and related areas).	Power BI	On demand

*N/A = Not applicable

Aspect	Resp. Process	Monitoring	Monitoring indicators	Unit	Goal 2020	Actual 2020	Critical analysis	Actions	Systems/Database	Frequency
Environmental	Asset intelligence	Fire	Fire harvest	ha	2 hectares burnt per outbreak	2.4 hectares burnt per outbreak	High temperatures: the year of 2020 was considered one of the hottest ever recorded, according to information from Copernicus – organ that studies the planet's climate (https://veja.abril.com.br/mundo/aquecimento-global-2020-bate-recorde-de-temperatura). In addition to that, there are fires considered accidental, that begin at the edge of the roads, are initiated by electric malfunction, or natural phenomena that affect the company's areas. These factors contribute to an increase in fire events.	Investment in technology and innovation for fire control and monitoring systems.	Data bank IP and Zenith	Daily update
		Fire	Fire preservation	ha	undefined goal			Greater engagement with social programs and educational activities.		
		Fire	Fire preservation	ha	undefined goal			Trainings and technical upgrading in fire fighting.		
Social	Asset intelligence	Wood forest residues	Donation of tips and branches	R\$	N/A	R\$ 5.4 million (est raised value)	Donation of tips and branches has been deemed an excellent proposal for income generation within local communities and commerce that add value for the families that depend on this resource as the sole source of income and subsistence.	Maintenance of donations of tips and branches to local communities and commerce.	Data bank IP	Monthly update
Economic	Logistics	Distance	Average radius	km	91	98	Deviation from the indicator due to strategic changes in the supply plan.	Frequent follow up of the indicator and monthly update of planning.	SAP	Real time
Environmental	Environment	Environmental Education Program	People who attended the Environmental Education Program (external)	#	105	125	The year of 2020 was marked by the COVID-19 pandemic. Because of that, this project was interrupted at the beginning of March. Thus, we were able to impact a small number of people along the year. Activities shall resume as soon as the pandemic is over.	The Environmental Education Program Caravelas has two arms: Social Communication Program and Environmental Education Program, with the aim of promoting environmental education, establishing a dialog among extractivist and fishing communities and children, and to disseminate information on the dredging activities on the channel Do Tomba.	Data bank MAF BAMGES	Monthly

*N/A = Not applicable

Aspect	Resp. Process	Monitoring	Monitoring indicators	Unit	Goal 2020	Actual 2020	Critical analysis	Actions	Systems/Database	Frequency
Environmental	Environment	Environmental Education Program	Total number of training hours – Environmental Education Program (internal)	Hours	18:00	25:30	The year of 2020 was marked by the COVID-19 pandemic. Because of that, the training was interrupted during the months of March and April. The trainings were rescheduled to be offered remotely and took place during the rest of the year, covering all that had been previously planned.	Trainings applied according to procedures and needs as they arose. Most of them addressed environmental topics essential to the company's activities. After the pandemic, trainings took place in the platform Microsoft Teams.	Training matrix MAF	Monthly
	Forestry	Forestry controls	Ant bait consumption	kg/ha	4.48	4.18	Less ant infestation.	Keeping the monitoring strategy	BI Pfin	Monthly
	Silvicultura	Forestry controls	Weedkiller consumption (glyphosate)	kg/ha	1.67	1.65	Implementation of pre and post control and application with pendant	Seeking to apply technologies to reduce glyphosate consumption.	BI Pfin	Monthly
Social	SSQV	SSOMAR	Score obtained on SSOMAR assessment	%	90.00	94.25	Maintaining co-management of goals established for service suppliers.	Keep SSOMAR audits on service suppliers.	Power point presentation Safety committee; SSQV Portal	Biannually
	SSQV	DNA	Termination of deviations on DNA	%	80	70	Implementation of the new system <i>Registro de Desvios DNA – De olho na Área</i> , enabled easier access for registration; however, during the adaptation to the new system, facilitators faced difficulties to manage the registries.	Maintain the task force along with operation and service suppliers to check the registration and actions on the system, terminate, monitor and present the status on the Safety Committee meetings.	DNA System	Monthly

*N/A = Not applicable

Aspect	Resp. Process	Monitoring	Monitoring indicators	Unit	Goal 2020	Actual 2020	Critical analysis	Actions	Systems/Database	Frequency
Econômico	SSQV	OPA	Score obtained with OPA Positive observation of activity	%	85	92	Application of safety tools by the leadership and service suppliers (OPA – Positive Observation of Activity and Safety Tour), that help to anticipate deviations and prevent accidents.	Keep the application of tools by the service suppliers.	Presentation, Safety Committee SSQV Portal	Monthly
	Nursery	Production of seedlings	Seedlings shipped	thousands	14,300	14,100	The shipping plan of the Itabatã nursery was readjusted due to a reduction in the planting program of the BA Unit compared with PB. With the new goal set, the shipping number of 200 thousand seedlings was below the anticipated.	Adjustment of the nursery plan following the update of the planting program.	Excel/SAP	Monthly
	Nursery	Production of seedlings	Use of seedlings	%	68.4	63.8	The indicator was impacted by the disposal of seedlings due to a change in the planting program. In addition to that, the nursery hosts genetic material that are more susceptible to diseases and present a smaller rate of utilization	Monitor low rooting cases, incidence of diseases and revisiting production plan on every forestry demand changes	Excel	Monthly



13. Communication with *Stakeholders*

13. Communication with *Stakeholders*

Suzano is constantly in contact with its employees and with the several segments of society, keeping them up to date on its activities, and always keeping things clear, transparent and straightforward.

Among the most commonly used communication media are:

Internal audience

Corporate social media, Intranet, Printed and Digital newsletters, walls, Forest Podcast, Corporate TV, Manuals and Educational guides.

External Audience

Press Relations, Website, Social media, Visitation programs, Annual reports, Management plan summary. In addition to those, the company maintains other communication channels, as described below.





Communication with specific audiences

Suzano Answers

0800 022 1727
or suzanoresponde@suzano.com.br

If you have any questions, suggestions for improvement, or complaints, please contact us, It is toll-free!

Social Networks

-  Facebook
www.facebook.com/suzanoempresa/
-  Instagram
www.instagram.com/suzano_oficial/
-  Youtube
www.youtube.com/user/Suzanovideos
-  LinkedIn
www.linkedin.com/company/suzano/

Ombudsman Suzano

Phones (toll-free)

Brazil
0800 771 40 60

Phones abroad
Check for the specific numbers on the Suzano Ombudsman website.

E-mail
ouvidoriaexterna@austernet.com.br

Website
<https://ouvidoriaexterna-suzano.com.br/>





www.suzano.com.br