

ABOVE KNEE SHORT : PR273

Customizable all Around (Full color sublimated graphics)

Elastic drawstring waistband

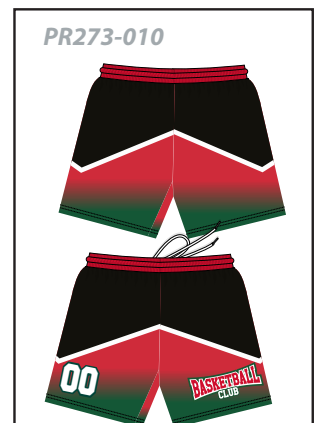
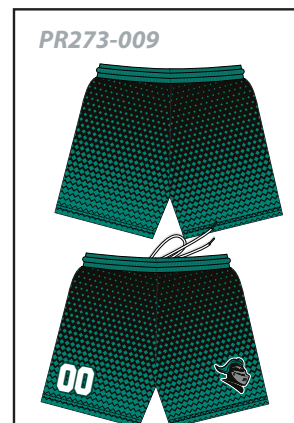
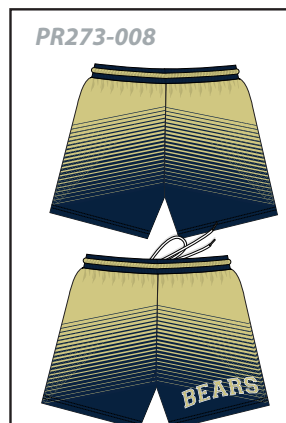
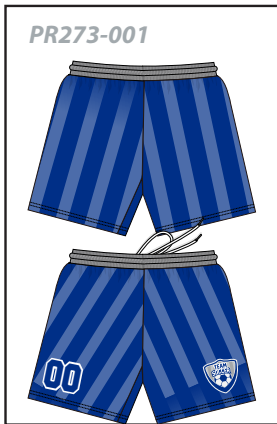
Lightweight and durable

Pick between white or black stitching and cord

Add Names or Numbers



PICK YOUR STYLE ↓



PR045 - UNISEX - YOUTH AND ADULT		SIZE SPECS - UPDATED 02.07.22 - INCHES													
STANDARD AREAS OF MEASUREMENT		YXS 4-5Y	YS 6-8Y	YM 10-12Y	YL 14-16Y	YXL 18-20Y	XS	S	M	L	XL	2XL	3XL	4XL	5XL
BODY LENGTH - FRONT (INCHES)		19.00	20.50	22.50	24.50	26.50	27.00	28.00	28.75	29.50	30.25	31.00	31.75	32.50	33.25
AROUND CHEST - UNDER ARMS (INCHES)		31.00	32.00	35.00	38.00	41.00	40.00	42.00	46.00	50.00	54.00	58.00	62.00	66.00	70.00
AROUND WAIST (INCHES)		26.00	27.00	30.00	33.00	35.00	35.00	36.00	39.00	42.00	45.00	48.00	50	54.00	57.00
AROUND HIP (INCHES)		24.00	27.00	30.00	33.00	36.00	31.00	35.00	39.00	43.00	47.00	51.00	55.00	59.00	63.00
LONG SLEEVE LENGTH (INCHES)		29.25	29.50	31.00	32.50	33.00	33.00	34.00	35.50	37.00	38.50	39.00	40.00	41.00	42.00
TALL BODY LENGTH															
TALL +2" TO BODY LENGTH (INCHES)		21	22.5	24.5	26.5	28.5	29	30	30.75	31.5	32.25	33	33.75	34.5	35.25
TALL +4" TO BODY LENGTH (INCHES)		23	24.5	26.5	28.5	30.5	31	32	32.75	33.5	34.25	35	35.75	36.5	37.25
TALL ARM LENGTH															
TALL +2" TO ARM LENGTH (INCHES)		31.25	31.5	33	34.5	35	35	36	37.5	39	40.5	41	42	43	44
TALL +4" TO ARM LENGTH (INCHES)		33.25	33.5	35	36.5	37	37	38	39.5	41	42.5	43	44	45	46

PICK YOUR STYLE ↓

FIELD HOCKEY JERSEY PR273



PR045 - UNISEX - YOUTH AND ADULT		SIZE SPECS - UPDATED 02.07.22 - INCHES													
STANDARD AREAS OF MEASUREMENT		YXS 4-5Y	YS 6-8Y	YM 10-12Y	YL 14-16Y	YXL 18-20Y	XS	S	M	L	XL	2XL	3XL	4XL	5XL
BODY LENGTH - FRONT (INCHES)		19.00	20.50	22.50	24.50	26.50	27.00	28.00	28.75	29.50	30.25	31.00	31.75	32.50	33.25
AROUND CHEST - UNDER ARMS (INCHES)		31.00	32.00	35.00	38.00	41.00	40.00	42.00	46.00	50.00	54.00	58.00	62.00	66.00	70.00
AROUND WAIST (INCHES)		26.00	27.00	30.00	33.00	35.00	35.00	36.00	39.00	42.00	45.00	48.00	50	54.00	57.00
AROUND HIP (INCHES)		24.00	27.00	30.00	33.00	36.00	31.00	35.00	39.00	43.00	47.00	51.00	55.00	59.00	63.00
LONG SLEEVE LENGTH (INCHES)		29.25	29.50	31.00	32.50	33.00	33.00	34.00	35.50	37.00	38.50	39.00	40.00	41.00	42.00
TALL BODY LENGTH															
TALL +2" TO BODY LENGTH (INCHES)		21	22.5	24.5	26.5	28.5	29	30	30.75	31.5	32.25	33	33.75	34.5	35.25
TALL +4" TO BODY LENGTH (INCHES)		23	24.5	26.5	28.5	30.5	31	32	32.75	33.5	34.25	35	35.75	36.5	37.25
TALL ARM LENGTH															
TALL +2" TO ARM LENGTH (INCHES)		31.25	31.5	33	34.5	35	35	36	37.5	39	40.5	41	42	43	44
TALL +4" TO ARM LENGTH (INCHES)		33.25	33.5	35	36.5	37	37	38	39.5	41	42.5	43	44	45	46

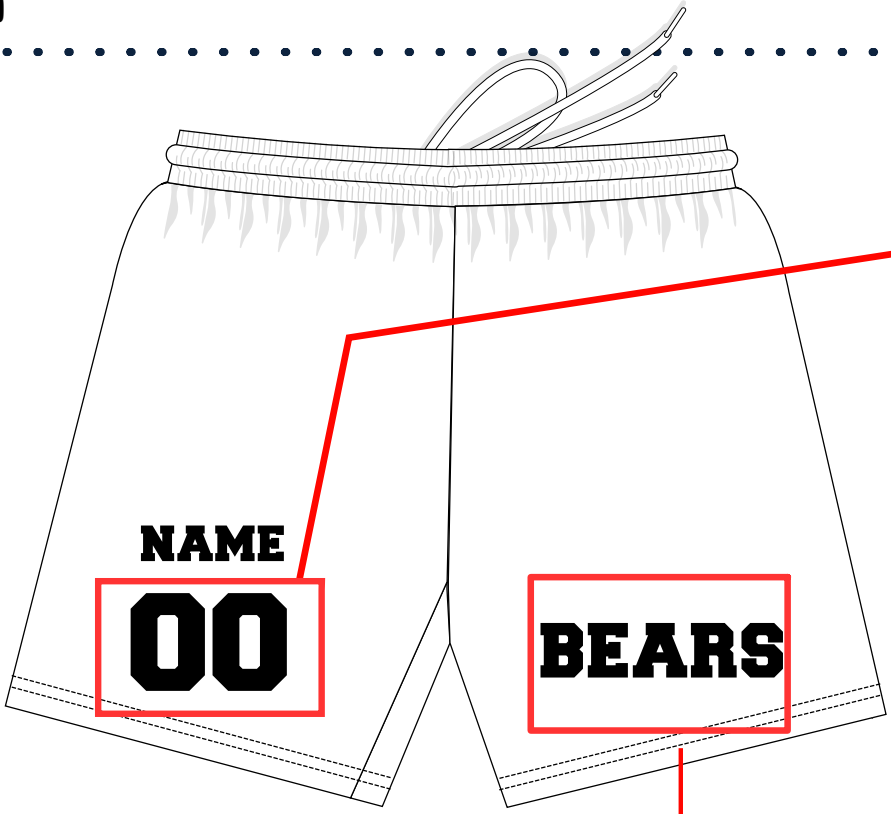


PR225

STARTING A FULL CUSTOM REQUEST

- 1. PICK THE STYLE
CHOOSE A DESIGN FROM ALL STYLES (OR SEND YOUR OWN)
- 2. AREAS TO CUSTOMIZE
SEE BELOW

A. LOGO



NAMES
Pick from available fonts.

- F001**
COLLEGE BLK
1234567890
- F002**
AERO
1234567890
- F003**
CRUSADER
234567890
- F004**
ARENO
1234567890
- F005**
BLOCKTASTIC
1234567890
- F006**
ALDO
1234567890
- F007**
PHOSPHATE
1234567890
- F008**
VIRIDIAN
1234567890
- F009**
AMERICAN
1234567890
- F010**
Hoodson
1234567890



- 3. ALL YOU NEED TO DO IS PROVIDE A SPREAD SHEET WITH WHAT NUMBERS/NAMES THAT YOU WANT ON EACH SIZE THAT YOU NEED THEM ON AND WE WILL GET TO WORK! IT IS EASY AND FUN TO ADD TO YOUR ITEMS.