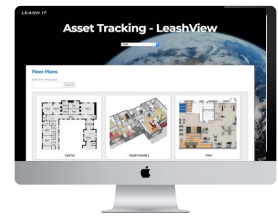




Real Time Location System (RTLS) for  
Aged Care and Dementia

January 2018

# LEASHVIEW

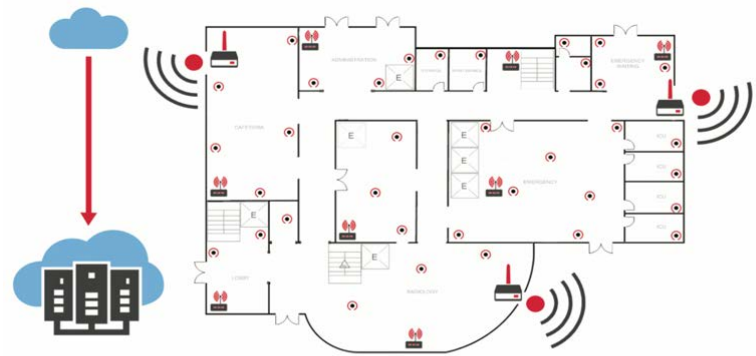


## Asset and Sensor Tracking

### Overview

LeashView's Bluetooth Low Energy (BLE) devices and software work seamlessly to track and manage the location of patients and high value assets. Regardless of what you would like to track, LeashView's Real Time Locating System (RTLS) will provide your facility with the insights you require. Location based tracking powered by BLE is the most valuable financial and analytical tool the Internet of Things (IoT) will bring to businesses. We now have sensors which allow you to monitor for water leakage, humidity, temperature, gas leakage and smoke. This makes the solution valuable for all types of businesses.

LeashView utilises Wi-Fi to BLE wireless gateways, BLE Leashes and 256bit encrypted firewalled servers. Each BLE Leash contains a unique ID that users can associate to a specific asset. Communication between the Leashes and gateways is customisable and can be set to 1 second, 5 seconds and even daily calls. With accuracy being as close as 4 metres it can instantly save time and money. As we build everything from the ground up, we can scale the solution from 10 units - 50,000 units. LeashView is extremely robust and easily deployed across multiple locations, multiple levels and even large outdoor yards or campuses.



#### HOW IT WORKS



### How LeashView helps

#### Compliance management

- Remotely complete stocktakes hourly, daily, weekly or monthly
- Set rules to make sure all assets are being stored in correct locations and provide compliance reports
- Manage temperature, humidity, smoke or water leakage & natural gas leakage warnings
- Instantly organise asset recalls
- Ensure only appropriately certified staff have access to specialised equipment

#### Check in and out

- Enable staff to search for an assets location in real time
- Receive real time alerts if assets reach exits or designated areas
- See location history and build records of asset movement over time
- Identify bottlenecks and over capitalisation areas
- Identify unusual movements of assets
- Identify idle assets

#### Monitor, analyse and act on your data

- Create automated email or sms data updates
- Collected data can be analysed to provide better business insights
- Easy to use dashboard and analytics tools
- Detailed reporting on utilisation, compliance and assets on hand
- Reconcile your existing assets register easily with real time inventory levels

## Leash It's Aged Care Solution

### Who we are

Leash It builds both hardware and software focused on creating connected communities and devices. All the solutions that we build are designed to feed into our "Community of Things" (CoT).

Our consumer solution has been in the market for 3 years and provides tracking and alerts. We see aged care and elderly support as an area which with technological advancement can help facilitate better lives for individuals and families all over the world. We want to see a future where families of people living in their own homes feel safe and secure.

### What we do

At Leash It, our goal is to help the elderly have more independence and families have more security. We are pursuing this goal through the development of our offering and the growth of the Community of Things. The more people that join our network, the more accurate and efficient our solution becomes. However we are taking it further and working to make a system that not only allows monitoring but uses this data and provides information so that predictive and preventative procedures can be put in place, saving time and money. Our systems constantly get smarter and evolve to provide more accurate solutions.

"There are more than 400,000 people in Australia with dementia. Of those people, about 55% are women. More than 50% of residents in Australian government-subsidised aged care facilities have dementia. This is a huge financial cost to individuals and the government.

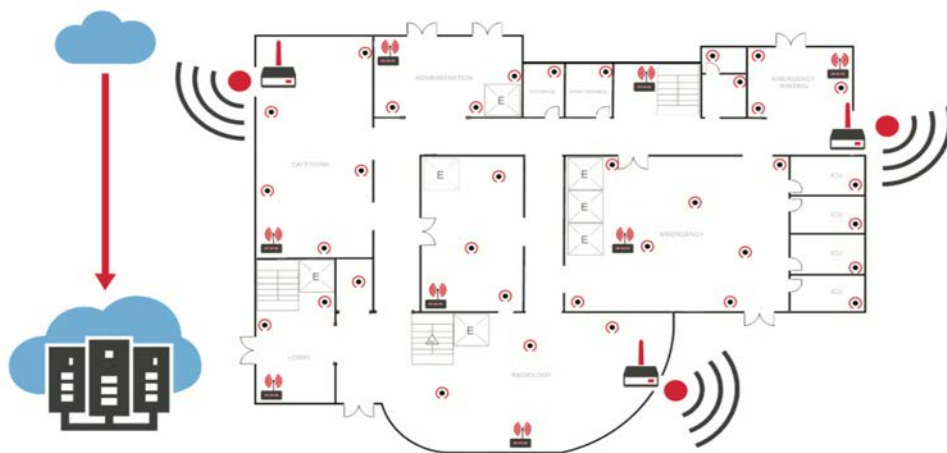
-healthdirect.gov

LeashView helps professional carers, friends and family provide pro-active care to those in need. Our notification system along with predictive learning capabilities mean that the system senses anomalies and creates alerts. Alerts can be sent out to one person or multiple people via phone or email. These alerts are constantly tracking, overlaying and refining data to become more intuitive.



## How it works

LeashView's RTLS can be worn or attached to a patient. It then identifies and tracks the patient within their home or respite facility. LeashView can tell carers and families instantly the location of the patient or loved one. When the Leashes move, they send out signals to gateway receivers strategically placed throughout the home or facility. The gateways relay all the Leash locations via existing Wi-Fi to the central server, which can be in the cloud or locally based in your facility. The locations of the Leashes are then displayed on the facility floorplan in the LeashView platform.

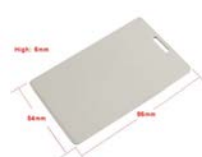


### HOW IT WORKS



#### Ultra Thin Leash

- 50 metre range
- 1-3 year battery
- Accelerometer
- Water proof
- Dust proof



#### Card Leash

- 50 metre range
- 3-5 year battery
- Water proof
- Dust proof



#### Patient Leash

- 50 metre range
- 30 day rechargeable battery
- Dust proof

## Track

Track the location of your patient or family member in real time or to where they have moved during a certain period.

## Alerts

Receive automatic alerts via email or SMS when the patient moves out of a geo fenced area or anomalies occur.

## Manage

Easily manage compliance and increase productivity or efficiency as administration can instantly search for assets. Also gain insights through collected data and analytics.

## Set rules

Enables carers to ensure security and regulatory compliance as well as helping families to work more efficiently. Patient tracking in respite and homes with LeashView can increase security and quality of care.

## Why LeashView

- LeashView RTLS enables carers and family to remotely monitor and care for patients more efficiently in their own homes. Patient tracking in respite facilities with LeashView can increase security and manage OH&S requirements
- Simple integration requirements with existing systems
- Top to bottom, this is the best value RTLS option
- Start with a limited proof of concept and then scale the solution as required
- LeashView is an end to end solution which can be installed and running within hours

## Installation

1. Upload a floor plan of each level of your facility or home into the LeashView platform. You can then work out the optimal number of gateways required for your particular situation
2. You can install the gateways in minutes. Using your floorplan in LeashView place your gateways location and then inputting the MAC address of the gateway into the system
3. Your patient tracking solution is now up and running and you can start searching, tracking and analysing all your data from the easy to use LeashView platform

"At Leash It we understand that the future of aged care will depend on community involvement at multiple levels. I created LeashView so friends, family and carers could all work together to help elderly citizens stay in their own homes longer and feel safer". Tony Lotzof

**All our software is built to work on desktop computers, tablets and smartphones making it easy to use in any situation**

