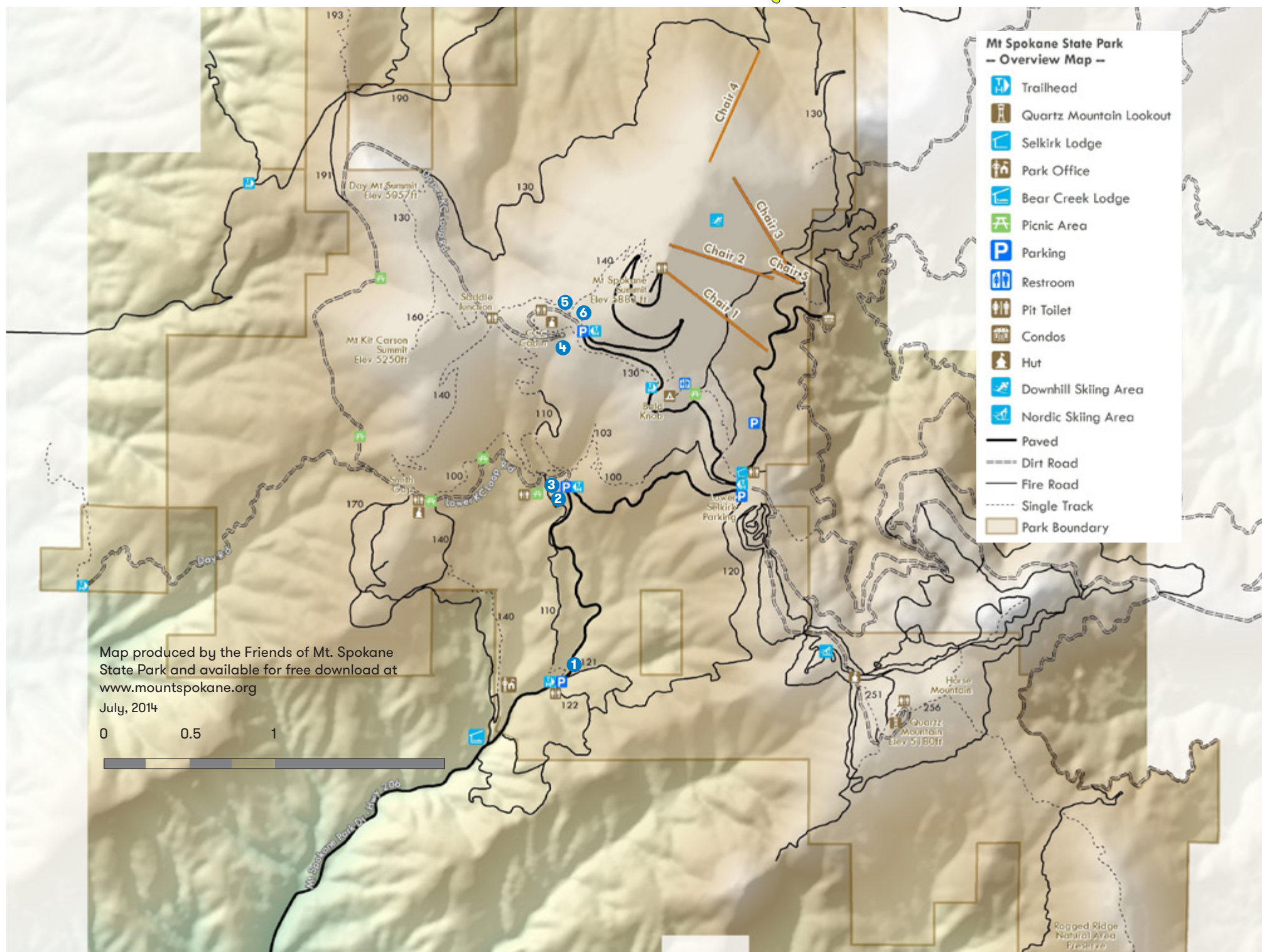


# Welcome to Mount Spokane



## Trails

All trails are multi-use during the summer, except where signed. The following are popular short trails for winter and summer. For a more extensive trail guide, contact the park office or visit [www.mountspokane.org](http://www.mountspokane.org).



**1 Entrance Loop Trail** – 1.5 miles roundtrip; moderate in difficulty. Begin east of the main park entrance and walk up Trail 121 (wide and fairly steep in places), along a peaceful tributary of Deadman Creek. Turn right on Trail 120 and head back down to the starting point on Trail 122. Excellent snowshoeing route.

**2 Hay Ridge Loop** – 4.5 miles roundtrip; moderate in difficulty. Start at the Lower Mount Kit Carson Loop Road (Loop Road) parking lot and take Loop Road west to Smith Gap (vault toilet and picnic table here). (Note: This makes a good turn-around point for a nice short hike.) Pass three stream crossings and three picnic tables. Continue on Loop Road a short distance past Smith Gap, and turn left on Trail 170. Follow Trail 170 as it gradually winds its way back to Loop Road. Do not confuse the main trail with three old logging roads that head left and uphill off of Trail 170. These side trails lead to the high point of Hay Ridge.

**3 Burping Brook Loop** – 3 miles roundtrip, with shorter options available; easy. Walk a short distance down the Lower Loop Road, starting at the parking lot, and turn right on Trail 100. Turn left at the next junction and cross the first branch of Burping Brook (Note: To view a streamside dead end, continue up the trail instead of turning left; bikes and horses not permitted). Stay on Trail 100 until it ends at Smith Gap on the Kit Carson Loop Road. For shorter options, take either of two left forks from Trail 100, and turn left again on Loop Road. Excellent snowshoeing routes.

**4 Mount Kit Carson Loop Road** – 7 miles one way; easy. Check with park rangers to ensure the summit road is open. Park one car at the Lower Loop Road parking lot and drive a second car to the Upper Loop Road trailhead, using Mount Spokane Park Drive and the summit road (Loop Road is closed to unauthorized vehicles). The road passes the CCC cabin, around the base of Day Mountain and Mount Kit Carson, crosses a logged area with views to the north and passes a gated connector road that leads down to Blanchard Creek Road. Further south, the road passes Day Mountain Road (2.7 miles to park boundary gate). After a short climb over Smith Gap, the road descends through an old-growth forest of cedar and hemlock to the lower trailhead. There are several streamside picnic tables along the route. Excellent for biking.

**5 Mount Kit Carson Loop** – 4 miles roundtrip; moderate in difficulty. Park at the Upper Kit Carson Loop Road trailhead off the summit road. Go around the locked gate and down the Kit Carson Loop Road. After a short distance, turn right on a single track trail and then immediately left, and start downhill on Trail 140. Watch out for downhill cyclists. Take 140 to Saddle Junction where there is a vault toilet. Cross the Kit Carson Loop Road, and turn right to follow Trail 160 to the summit of Mount Kit Carson. Return the same way or follow Trail 160 north down to Trail 130 and turn right. Follow Trail 130 back to the junction with Trail 160 and turn left, following Trail 130 back down to Saddle Junction. Then follow the Loop Road back up to your starting point.

**6 Day Mountain Loop** – 5 miles roundtrip; easy. Begin on Trails 140 (see Mount Kit Carson Loop listed above), and follow Trail 130 from the saddle junction out to the rocky open meadows of Day Mountain. After reaching the largest rocky area, the trail turns north (right) into the trees and heads downhill. Follow the switchbacks down to Loop Road, turn right, pass the continuation of Trail 130 on the left and take Loop Road back up to starting point.





to vehicles only during summer. The summit road is open in winter. The park advises motorists to carry chains in winding road. The park advises drive the mountain's narrow, sanding trucks frequently. In winter, snowplows and Please drive carefully. Spokane County.

of U.S. Highway 2 in northeast State Road 206, 15 miles east The park is at the end of Douglas fir.

hemlock, western larch and red cedar, grand fir, western elevations include western lodgepole pine. Lower fir, Engelmann spruce and are dominated by subalpine The higher-elevation forests deer, black bear and more, as moose, cougars, coyotes, Park is a 13,202-acre camping Mount Spokane State

## Welcome to Mount Spokane



Visitors may back-country ski and snowshoe on (un-groomed) trails 100, 110, 121, 122 and part of 130. A Sno-Park permit is required. A special groomed trails permit must be displayed with a seasonal Sno-Park permit when using special groomed trails or parked in designated special groomed trails Sno-Parks. One-day permits are available and can be used alone in all Sno-Parks.

**Other non-motorized winter recreation** - Machine registration and Sno-Park permits are required. A short walk from the 60-vehicle parking lot, 1998, are open for winter use. The Selkirk Lodge cabin, which was rebuilt on the original site in Selkirk Lodge and a Civilian Conservation Corps designated areas; trail maps are available. The within and adjacent to the park are groomed for snowmobiling. Snowmobiles are restricted to trails at an average elevation of 4,700 feet for

**Nordic skiing** - The park has 40 miles of groomed trails at an average elevation of 4,700 feet for skiers of varying abilities. A parking lot adjacent to the Selkirk Lodge warming shelter has room for 220 vehicles (Sno-Park permit and trail grooming sticker required), and a smaller warming shelter sites in the middle of the trail system. Snowshoeing, hiking and dogs are not allowed on these trails. The State Parks Sno-Park program groom trails Thursdays through Mondays. For snow reports, visit [www.spokaneenordic.org/conditions](http://www.spokaneenordic.org/conditions).

**Alpine skiing** - The park has 1,250 acres with 35 trails, five double-chair lifts and a vertical drop of 2,065 feet. Open Wednesdays through Sundays in winter, with night skiing available. For snow reports and more information, call Mount Spokane 2000 at (509) 238-2220 or visit [www.mtspokane.com](http://www.mtspokane.com).

Winter recreation opportunities abound at Mount Spokane and include the following popular activities:

This surge of development was followed by the opening of Grand Lodge in 1940, which burned down in 1952, and operation of the world's first double-chair lift from 1946 to 1949. The 5,883-foot mountain offers excellent alpine skiing, snowboarding, groomed Nordic and snowmobile trails, snowshoeing, dog sledding, backcountry skiing, hiking, mountain biking, horseback riding and llama packing. Limited summer camping is available in the Bald Knob campground (closed during winter), and a fire lookout on Quartz Mountain is available for overnight rental. Visitors also can drive to the top of the summit and enjoy spectacular views of the area.

Recreational development began in the early 1900s by individuals such as Francis Cook, local ski clubs and the Civilian Conservation Corps (CCC). In the 1930s, ski club members built lodges, rope towers and jumps on the south and west sides of the mountain. In 1933, private contractors built the Vista House - a rustic, granite building that groups may use for day-use events.



## Mount Spokane history

Opened in 1927 Mount Spokane was, and is, an important gathering place for local Indian peoples. The summit of the mountain was a spiritual pilgrimage site for Native Americans, specifically the Spokane Tribe. It is now a haven for winter and summer recreationists.

**Summer recreation** Hikers, bicyclists, horseback riders and pack stock users may use all park trails during the summer, except where signed; some trails may be temporarily closed due to erosion or wildlife concerns. The Natural Area Preserve on Ragged Ridge is open for pedestrian use on the designated trail and for educational and scientific purposes.

## Things to remember

- **Park hours** - 6:30 a.m. to dusk.
- **Winter Schedule** - 6:30 a.m. to 10 p.m. Although most parks are open year round, some parks or portions of parks are closed during the winter.
- For a winter schedule and information about seasonal closures, visit [www.parks.state.wa.us](http://www.parks.state.wa.us), or call the information center at (360) 902-8844.
- Wildlife, plants and all park buildings, signs, tables and other structures are protected; removal or damage of any kind is prohibited.
- Hunting, feeding of wildlife and gathering firewood on state park property is prohibited.
- Pets must be on leash and under physical control at all times. This includes trail areas and campsites. Pet owners must clean up after pets on all state park lands.



## Be a friend

The Friends of Mt. Spokane State Park is a non-profit organization with a mission to benefit, support, and preserve the park. If you would like to make a tax deductible donation or volunteer with the Friends Group, visit [www.mountspokane.org](http://www.mountspokane.org) or write to the Friends at 8525 S. Windmill Drive, Spokane, WA 99223.

**The Discover Pass** is required for day visits to state parks and access to other state-managed recreation lands. The pass provides access to millions of acres of parks, wildlife areas, trails, natural areas and water-access sites. The annual pass is transferable between two vehicles.

- Annual pass: \$30
- One-day pass: \$10 (transaction and dealer fees may apply)



The Discover Pass can be purchased online, by phone or in person. For details, visit [www.discoverpass.wa.gov](http://www.discoverpass.wa.gov) or call (866) 320-9933.

**Thank you for supporting Washington state recreation lands.**



**Mount Spokane State Park**  
26107 N. Mount Spokane Park Drive  
Mead, WA 99021  
(509) 238-4258

**State Parks information:**  
(360) 902-8844

**Reservations:**  
Online at [www.parks.state.wa.us](http://www.parks.state.wa.us)  
or call (888) CAMPOUT  
or (888) 226-7688

**Other state parks located in the general area:**  
Riverside



## Connect with us on social media

- twitter [www.twitter.com/WASStatePks](http://www.twitter.com/WASStatePks)
- facebook [www.facebook.com/WashingtonStateParks](http://www.facebook.com/WashingtonStateParks)
- YouTube [www.youtube.com/WashingtonStateParks](http://www.youtube.com/WashingtonStateParks)

Share your stories and photos: [AdventureAwaits.com](http://AdventureAwaits.com)



If you would like to support Washington State Parks even more, please consider making a donation when renewing your license plate tabs. You also may place a check in a donation box when you visit state parks. Donations are a significant part of the State Parks budget and are needed to keep your parks open and operating. For more information, visit [www.parks.state.wa.us/donations](http://www.parks.state.wa.us/donations)

## Washington State Parks and Recreation Commission

P.O. Box 42650  
Olympia, WA 98504-2650  
(360) 902-8500  
[www.parks.wa.gov](http://www.parks.wa.gov)



**Commission members:**  
Ken Bounds Mark O. Brown  
Patricia T. Lantz Steve S. Milner  
Douglas Peters Rodger Schmitt  
Lucinda S. Whaley  
Agency director: Don Hoch

*All Washington state parks are developed and maintained for the enjoyment of all people.*

To request this brochure in an alternative format, please call (360) 902-8844 or the Washington Telecommunications Relay Service at (800) 833-6388. P&R 45-75000-02 (05/17)



## Washington State Parks

# Mount Spokane State Park



EMBRACE YOUR NATURE  
[www.parks.state.wa.us](http://www.parks.state.wa.us)