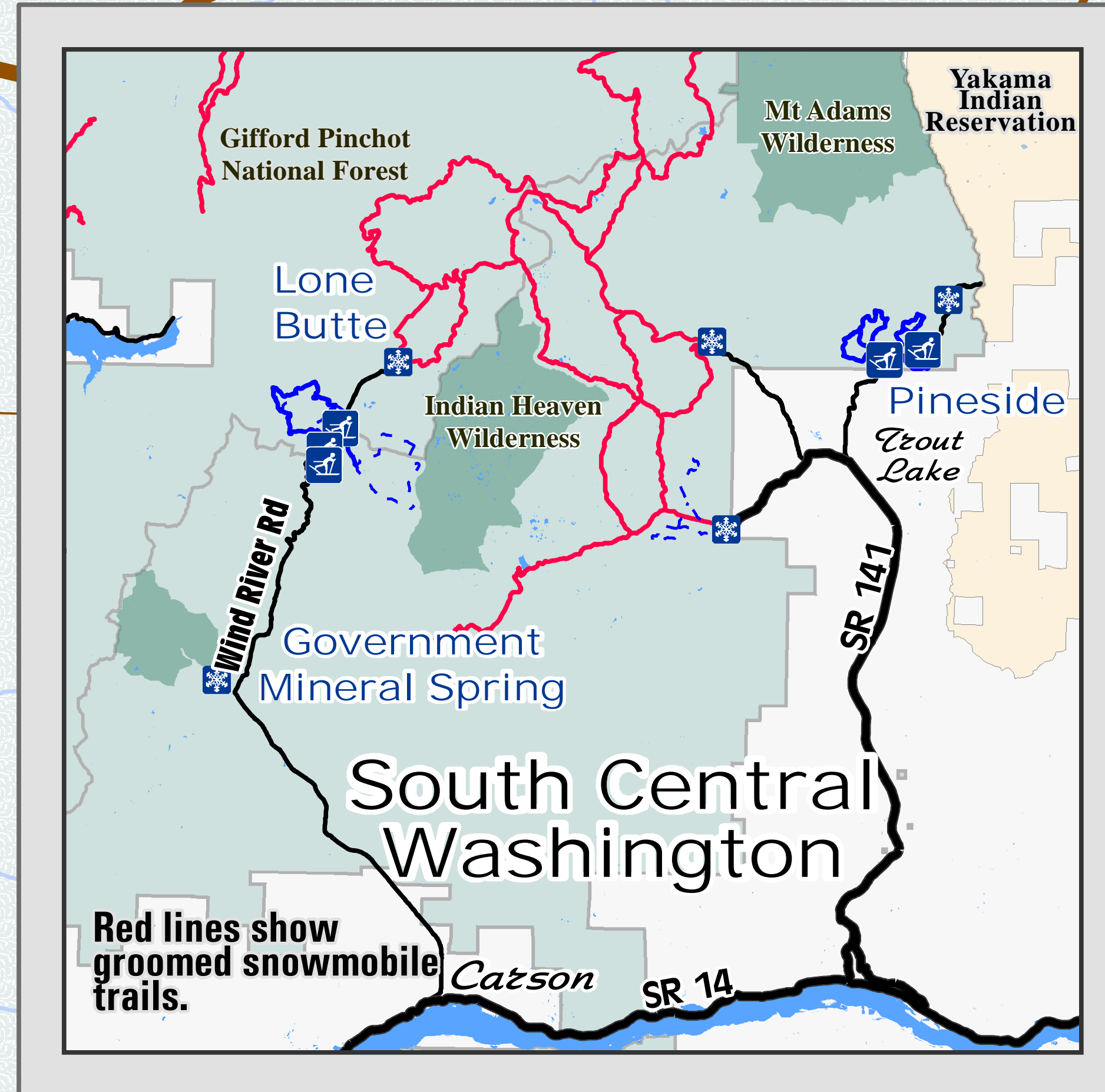


# Welcome Koshko Oldman Pass McClellan Meadows Sno Parks

## Groomed Trail System



### Explanation

- Non-Motorized Sno-Park
- Groomed Ski Trail
- Marked Ski Route
- View
- Access Road
- Major Forest Road
- Road
- Wilderness Area
- Gifford Pinchot National Forest

**Wind River Trail System  
has 24 kilometers (15 miles) of  
groomed cross country ski trails.**

Road Number  
Kilometers

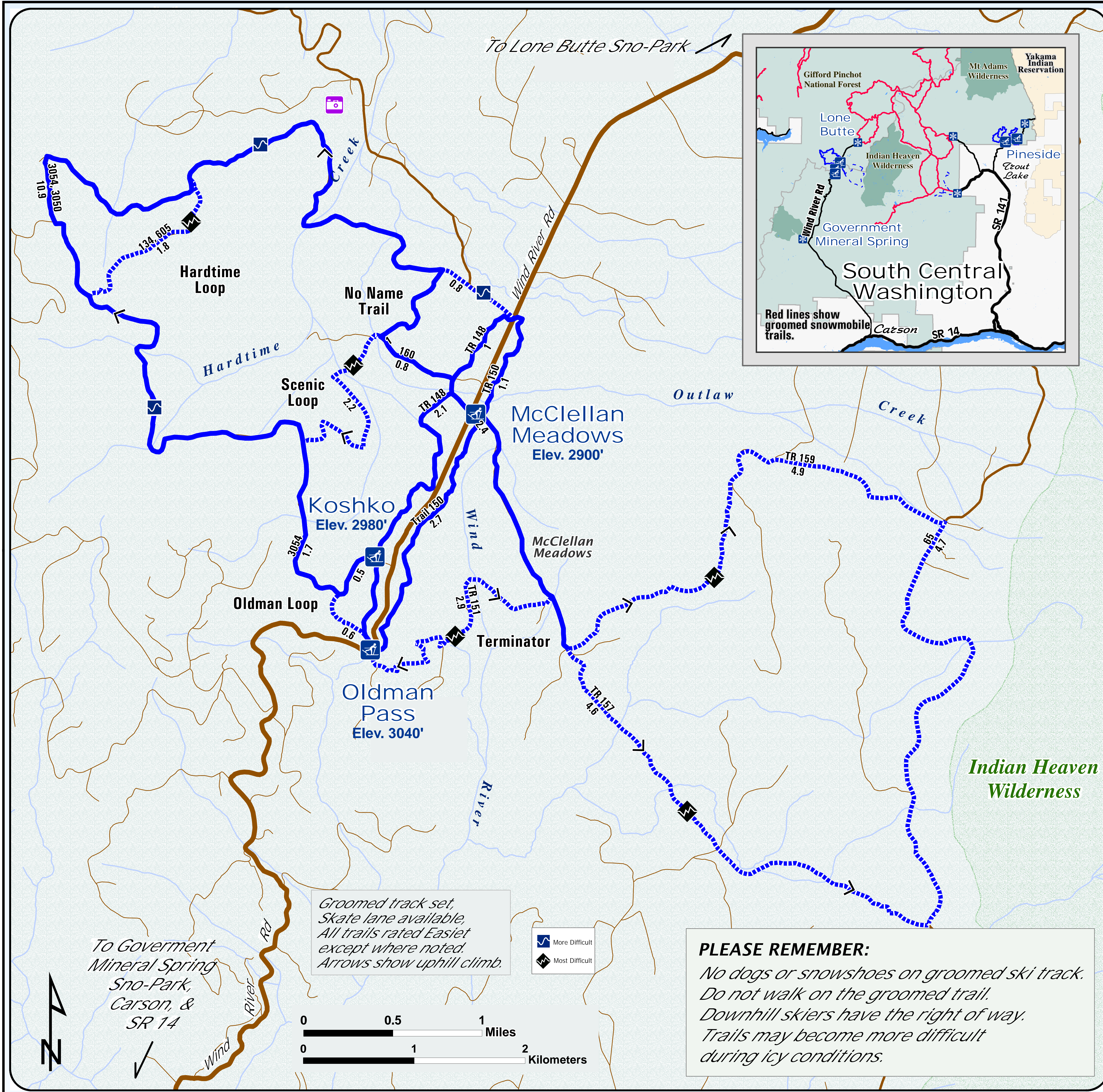
*Snow grooming equipment may  
be on the trail at any time.*

*Trail grooming schedules may change  
without notice due to snow conditions,  
temperatures, equipment breakdowns, etc.*

*Be aware of potential avalanche danger,  
check [www.nwac.us](http://www.nwac.us) before you leave home.*

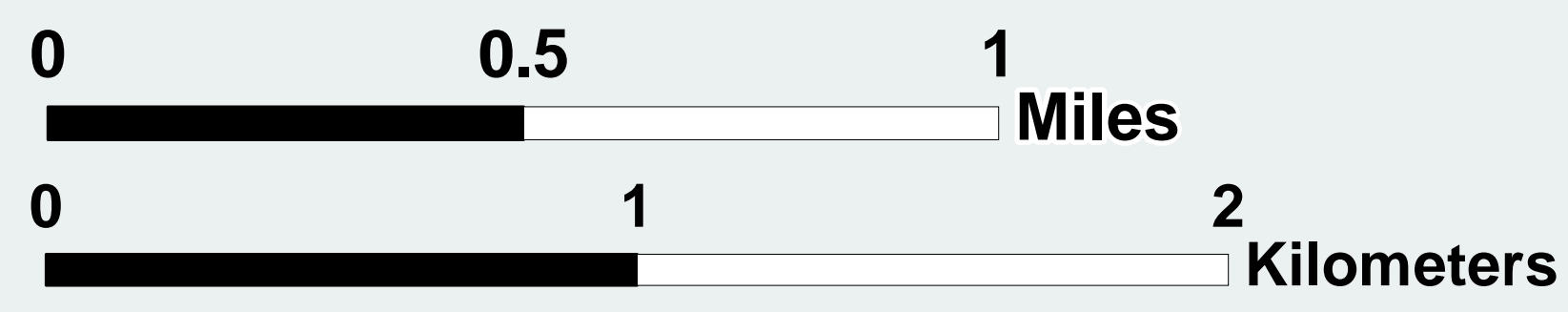
*Trail grooming schedules and maps at  
[www.parks.wa.gov/winter](http://www.parks.wa.gov/winter)  
Please report errors or comments to:  
[winter@parks.wa.gov](mailto:winter@parks.wa.gov)*

**For Emergency Call 911  
Skamania Co. Sheriff 509-427-9490**



*Groomed track set,  
Skate lane available,  
All trails rated Easiest  
except where noted.  
Arrows show uphill climb.*

- More Difficult
- Most Difficult



**PLEASE REMEMBER:**  
*No dogs or snowshoes on groomed ski track.  
Do not walk on the groomed trail.  
Downhill skiers have the right of way.  
Trails may become more difficult  
during icy conditions.*