



Community Advisory Council Meeting #11

August 29, 2020

Table of Contents

- Neighborhood Update
- 1-Year CAC Recap
- Community Center & Pocket Park Update
- Recreational Program Survey
- Project Schedule / Milestone Review
- DEIS EJ Project Commitments
- Outreach Update
- Summary & Next Steps

Neighborhood Update

*Are there unanswered questions from the last meeting?
Are there other items you would like to
bring up with the CAC or project team?*



*Did you speak to any neighbors or residents who have
questions or comments for the project team? Please
note any specific items your neighbors would like to
bring to the project team's attention.*

1-Year CAC Recap

Why develop a Community Advisory Council?

- Provide a way for you to voice **your opinions, feelings, and ideas**
- **Help shape this project** and create a positive, local impact
- Provide **input on actions to minimize and mitigate** impacts
- Build **relationships**
- Convey **ownership**
- **Meaningful** engagement

Desired Outcomes of the Community Advisory Council

- Provide forum for **open communication** between the project team and the community
- **Early collaboration** to frame expectations and identify solutions
- Help SCDOT understand the community **history, needs, concerns, and priorities**
- Help SCDOT gain a **better understanding of the project impacts** on the community
- Help **shape the community mitigation** package

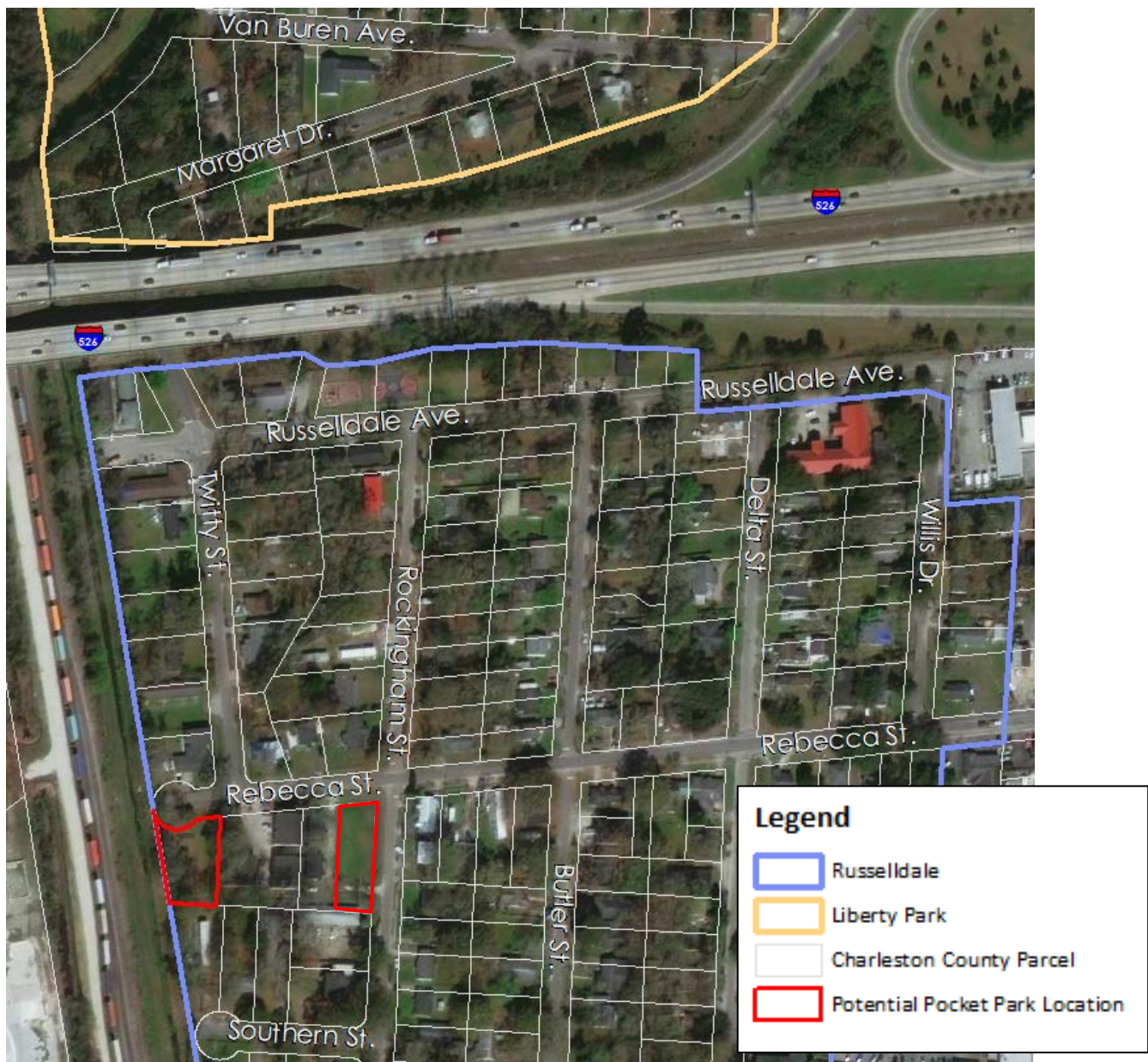
“Cities have the capability of providing something for everyone, only because, and only when, they are created by everybody.”

- Jane Jacobs

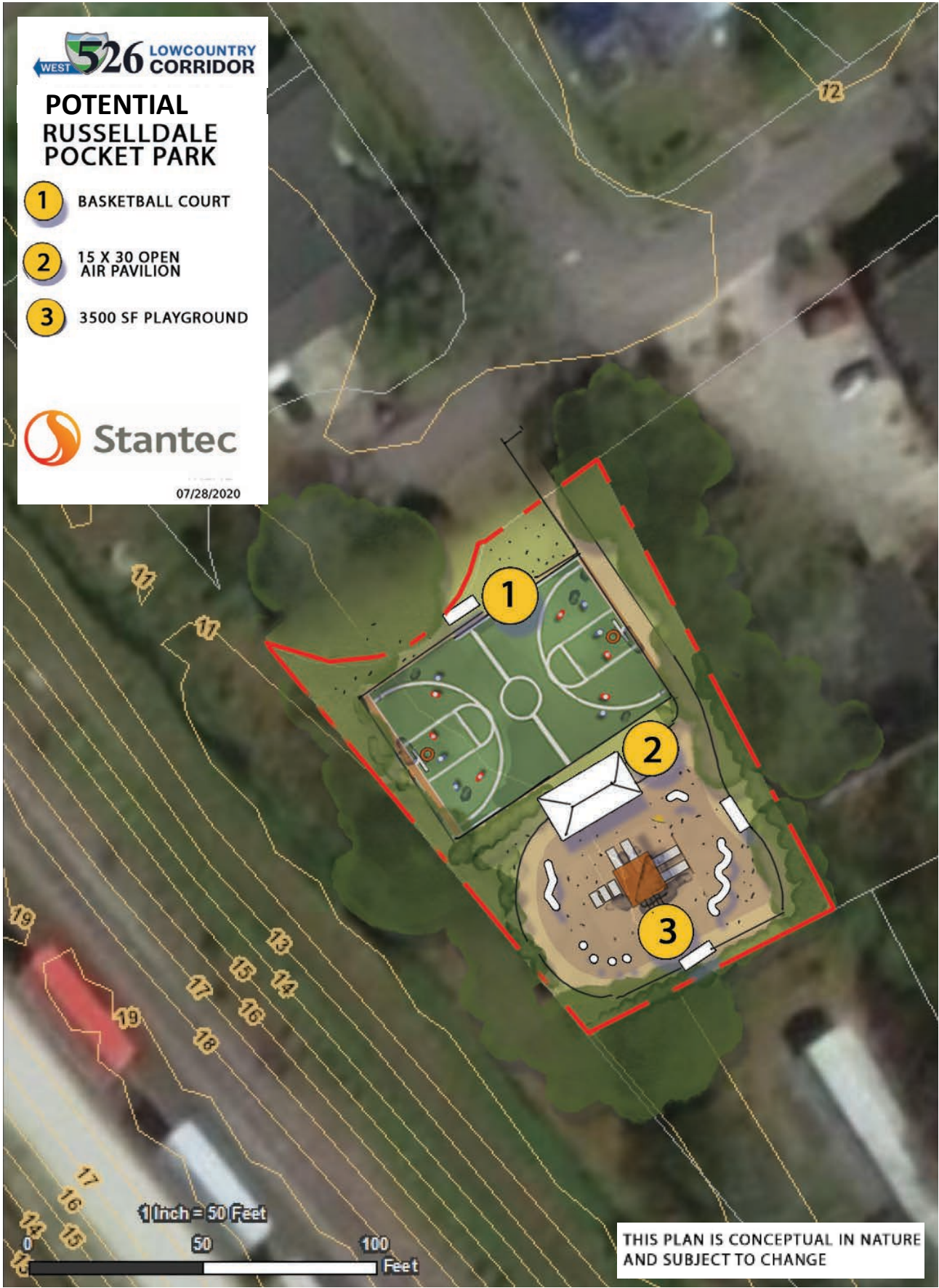
Russelldale Pocket Park Update

Update

- SCDOT is currently investigating the acquisition of one of the parcels shown below in **red** at the western end of Rebecca Street, as potential locations for the Russelldale Pocket Park. If one of these parcels can be acquired, the amenities previously shown previously along Margaret Drive as part of the Filbin Creek Community Center concept would be moved to this location.
- Either of these locations would be compatible with current proposed infrastructure improvements on Rebecca Street which may include:
 - Crosswalks with pedestrian crossing signs
 - Curb improvements with ADA compliant sidewalks
 - Increased streetlights
 - Traffic calming measures on Rebecca Street to reduce vehicle speeds



Replacement Community Facility Concept: Russelldale



Replacement Community Facility Concept: Filbin Creek



THIS PLAN IS CONCEPTUAL IN NATURE
AND SUBJECT TO CHANGE

POTENTIAL FILBIN CREEK COMMUNITY CENTER

BUILDING BREAKDOWN

GYM 130 X 75 - 9750 SF

OFFICE 60 X 75 - 4500 SF

CLASS 40 X 90 - 3600 SF

1 ACCESS DRIVE TBD

2 COMMUNITY CENTER BUILDING

3 OUTDOOR BASKETBALL COURT

4 RAIN GARDEN

5 5000 SF PLAYGROUND

6 120X210 MULTI USE FIELD

7 EDUCATIONAL WETLAND

8 FITNESS LOOP

9 PEDESTRIAN BRIDGE

10 POTENTIAL RUSSELLDALE SITE SWAP

11 DOT ROW PARKING

12 CONNECTION TO RUSSELLDALE

13 POTENTIAL CONNECTION

14 POLLINATOR LOOP

15 ON STREET PARKING

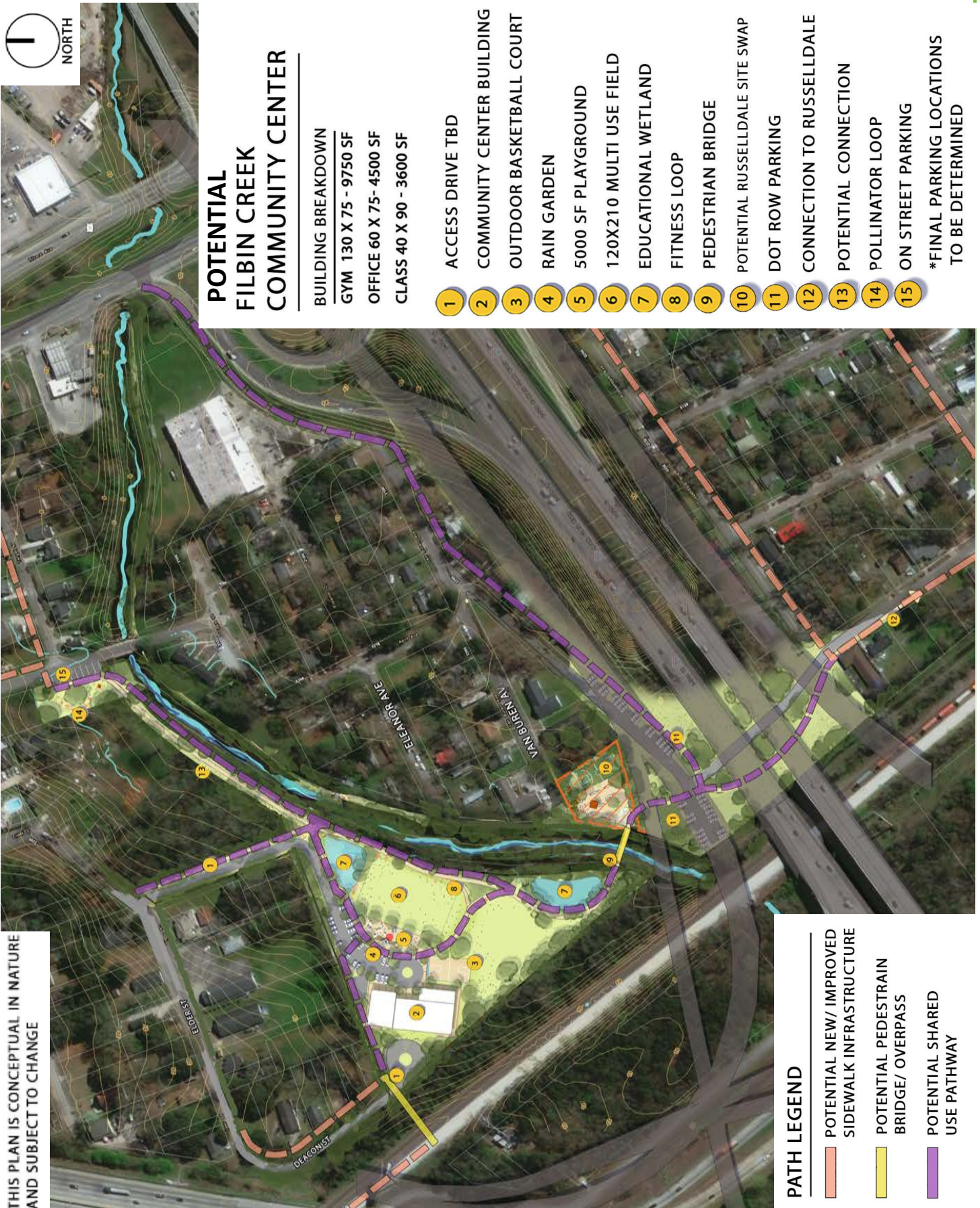
*FINAL PARKING LOCATIONS
TO BE DETERMINED

PATH LEGEND

POTENTIAL NEW/ IMPROVED
SIDEWALK INFRASTRUCTURE

POTENTIAL PEDESTRAIN
BRIDGE/ OVERPASS

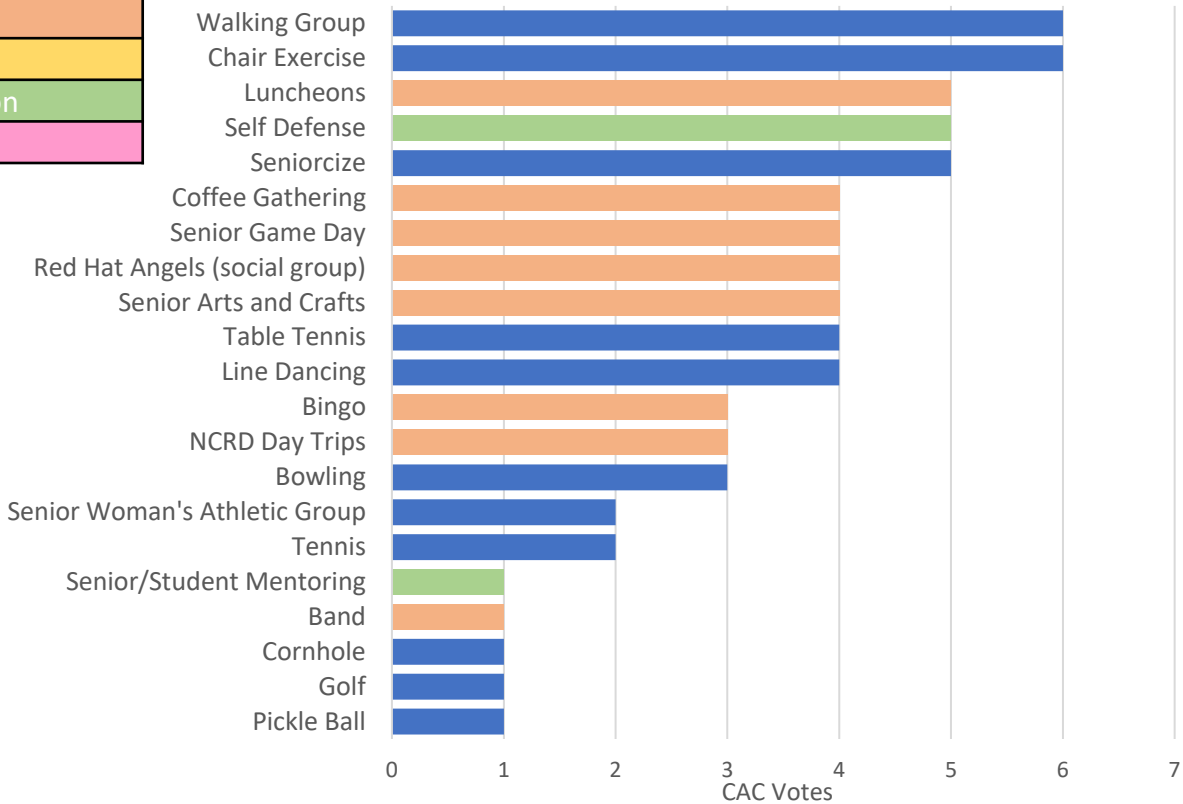
POTENTIAL SHARED
USE PATHWAY



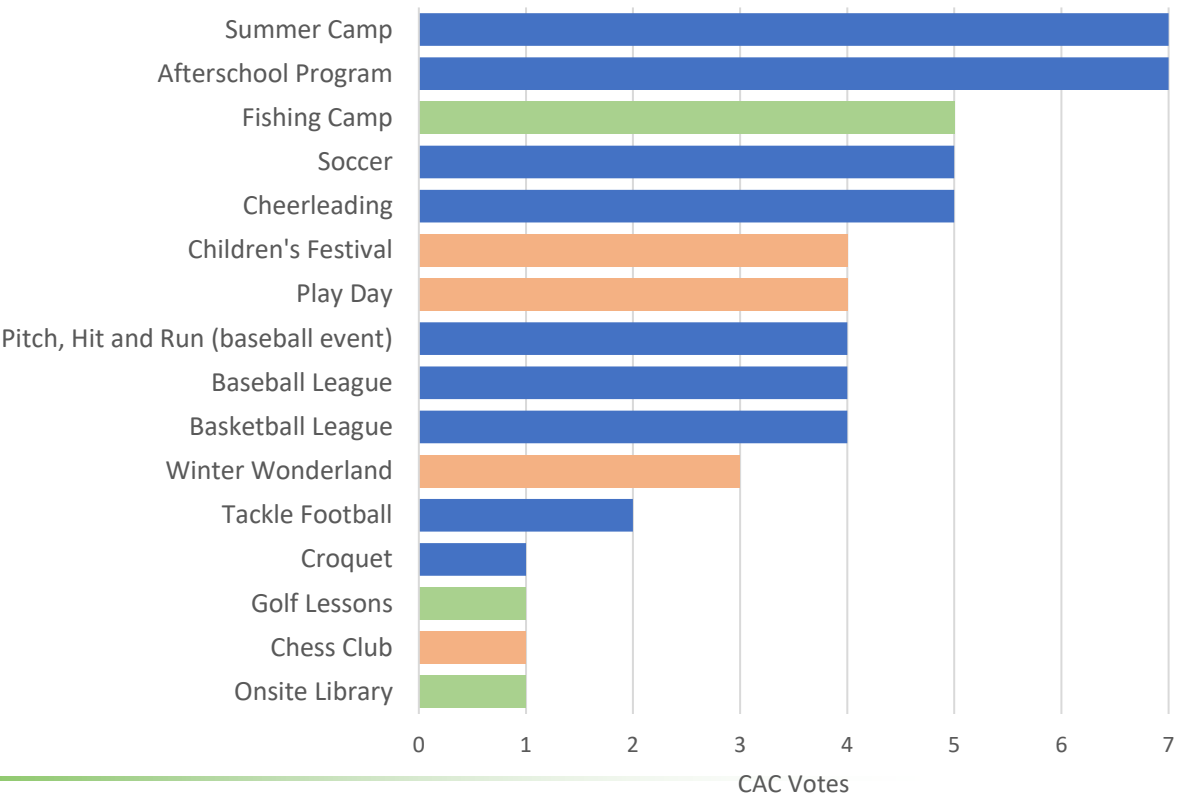
CAC Recreational Program Recommendations (Survey)



Senior Focused Programs

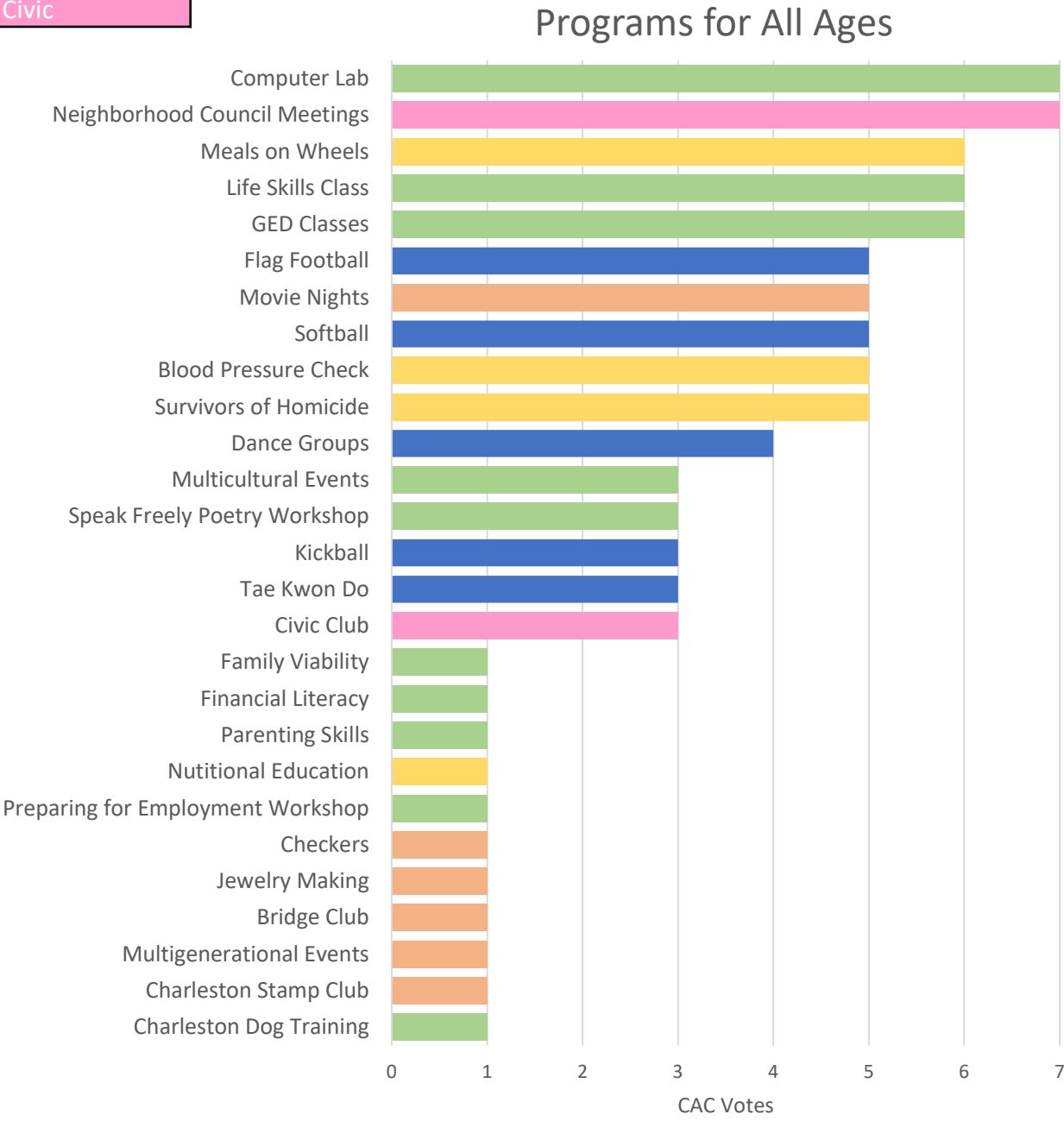


Youth Focused Programs



CAC Recreational Program Recommendations (Survey)

Recreation
Social
Health
Education
Civic



Recreational Program Recommendations (CAC Survey)

Top 9 Recommended Programs (at least 85% of participants voted for these items)

- Computer Lab
- Summer Camp
- Afterschool Program
- Neighborhood Council Meetings
- Meals on Wheels
- Life Skills Classes
- GED Classes
- Walking Group
- Chair Exercise Class



Key Takeaways

- A computer lab within the classroom space of the community center is important
- Specific sports programs will depend on the facilities
- Health initiatives ranked high, but there are not many programs available
- All community center programs should prioritize the local residents
- Additional requests discussed include:
 - Educational courses that address:
 - Parenting for new parents and single-parent households
 - Nutritional guidelines
 - Financial literacy and budgeting
 - Bike and pedestrian safety
 - Child safety seat requirements and installation
 - Arts/crafts for children, youth and seniors
 - Chess Club for children and youth
 - Mentoring programs, particularly those that create a synergy between existing resources and skills of residents and the interested mentee(s)
 - Summer youth employment opportunities at the community center
 - Installation of solar power with battery back up for community center to support families during weather perils

Project Schedule / Milestone Review

- The **Community Advisory Council (CAC)** will continue to meet on a monthly basis until Winter 2021 when the Final Environmental Impact Statement (FEIS) and Record of Decision (ROD) are issued by FHWA. During this timeframe, the CAC will focus on further developing the details of the Community Mitigation Plan and related Project Commitments that were included in the Draft EIS.
 - When the FEIS/ROD is issued, the CAC will transition into the **Project Oversight Committee (POC)** and be responsible for overseeing implementation of the Community Mitigation Plan.
 - It is recommended that, at a minimum, the POC meet quarterly beyond 2022 to track the implementation of the commitments during the Final Design, Right-of-Way Acquisition, and Construction phases.
- **Draft Community Mitigation Plan**
 - An overview of the Draft Community Mitigation Plan will be made available for public review and during Fall 2020.
 - The detailed version of the Draft Community Mitigation Plan will be available for public review when the DEIS is published in November 2020.
- **History Preservation Study**
 - Community residents will be able to provide input into the History Preservation Study from its Kick-off in Fall 2020 through the Right-of-Way Acquisition phase of the 526 LCC WEST project.





Community Advisory Council (CAC)

SCDOT will continue to support the Community Advisory Council (CAC) which was established in September 2019. The CAC consists of residents and property-owners from the impacted Environmental Justice (EJ) communities, who serve the following roles during the project development phase:

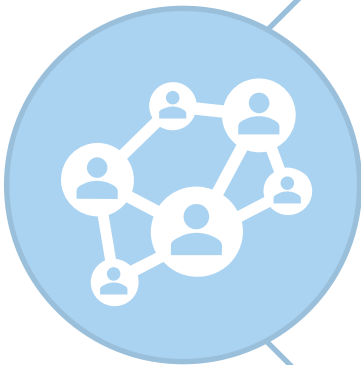
- (a) share individual knowledge and perspectives with the project team;
- (b) provide input on project-related impacts and proposed mitigation;
- (c) serve as a voice for the EJ neighborhood residents; and,
- (d) share project-related information.

SCDOT will continue to support the CAC, through the approval of the FEIS/ROD, by facilitating their regularly scheduled monthly meetings, providing technical assistance, and providing administrative support as needed.



Organizational Training

SCDOT will provide support for training to transition the Community Advisory Council to a Project Oversight Committee (POC). This training will also be made available to residents of the impacted EJ communities who are interested in joining the POC or other groups looking to initiate community advocacy.



Community Office

SCDOT will maintain a Community Office throughout the project development, final design, and right-of-way phases of the project. The Community Office will continue to be staffed with a full-time Office Manager, Community Liaisons/Outreach Specialists, and part-time Right-of-Way Specialists, who will be available to provide community residents with real-time project and right-of-way information. The Community Office will also be available to serve as meeting space for the CAC and the POC. The Community Office will remain in operation until the completion of the Right-of-Way Acquisition Phase.

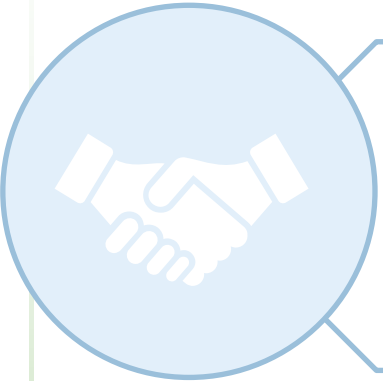
Discussion:



Affordable Housing

SCDOT will develop a plan with the South Carolina State Housing Finance and Development Authority to construct replacement affordable housing units in the vicinity of the impacted EJ communities. The location and final number of affordable housing units will be determined prior to the approval of the FEIS/ROD.

SCDOT is conducting early acquisition of vacant lots within the EJ communities in order to ensure families displaced by the I-526 LCC West project have affordable replacement housing options within their communities. SCDOT is investigating provisions and partnerships that will enable the replacement housing to remain affordable in the future. Displaced residents would have to meet the qualifications for the affordable housing programs.



Financial Literacy and First-time Home Buyer Counseling

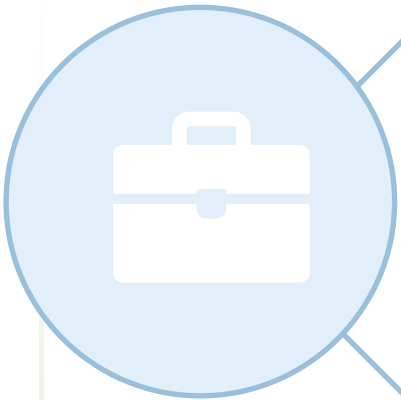
SCDOT will develop partnerships with the local organizations to provide financial literacy and first-time home buyer counseling to displaced residents, which could assist them in securing residential loans and transitioning from renters to homeowners. The counseling will be initiated during first quarter 2021.

Discussion:



School-to-Work Program

SCDOT will develop partnerships with educational institutions to develop school-to-work employment programs with the goal of enhancing employment opportunities within the fields of construction and engineering. Each year ten (10) high school or college students from the impacted neighborhoods can participate in the program through the completion of the project. Each year the program will be evaluated to determine its effectiveness and subsequent funding.



Pre-employment Training

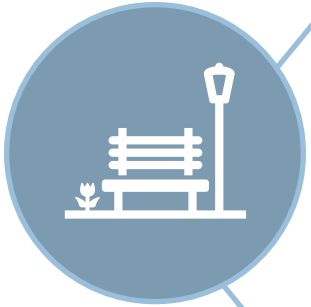
This program will be established prior to construction to provide training and job readiness skills to individuals from the affected communities. SCDOT will determine the number of participants required completing the program and the program will be the responsibility of the contractor. The contractor’s program plan and curriculum will be reviewed and approved by SCDOT. Graduates of this program will be considered for participation in On-The-Job Training (OJT) Program.



College Aid Initiative

Prior to construction, SCDOT will develop a partnership with local educational institutions and provide up to \$50,000 to fund a scholarship program. The scholarship program will be for high school and college students from the impacted EJ communities that intend to or currently attend the selected educational institutions.

Discussion:



Facilities and Amenities

SCDOT will fund the construction of replacement recreational facilities and associated infrastructure to mitigate project impacts and satisfy Section 4(f) and Section 6(f) requirements. SCDOT will acquire parcels located within the affected neighborhoods and provide funding to the City of North Charleston who will oversee construction of one large, centrally located community center complex and two pocket parks within the impacted EJ neighborhoods. Final details of the amenities to be included in the community center and the pocket park will be included in the FEIS/ROD. Construction of the new centrally located community center and the pocket parks will be completed prior to the start of construction of the I-526 LCC-West improvements.

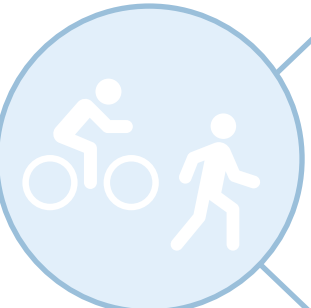


Programs and Activities

Prior to the approval of the FEIS/ROD, SCDOT and the City of North Charleston will develop an intergovernmental agreement outlining the programs, services, structural components, and arrangements for long-term operation and maintenance of the replacement community centers and recreational facilities. The agreement will include language that gives residents of the communities served by the centers priority in areas such as program enrollment/participation, reserving facility space, and volunteer opportunities.

The City of North Charleston will continue to look for qualified candidates that live in the impacted environmental justice neighborhoods. The City of North Charleston will post job openings within the neighborhoods and encourage the CAC and neighborhood councils to submit qualified applicants.

Final details related to programs, amenities, and community member employment opportunities at the recreational facilities will be included in the FEIS/ROD.



Connectivity and Bicycle & Pedestrian Safety

SCDOT will develop a plan to improve bike and pedestrian connectivity, safety, and mobility between the replacement community centers and recreation facilities, the surrounding EJ communities, and transit stops along Rivers Avenue. These improvements may include new and upgraded sidewalks, improved lighting, crosswalks/pedestrian signage, traffic calming, and CARTA transit stop improvements.

Discussion:



Community Infrastructure Enhancement Plan

A Community Infrastructure Enhancement Plan would identify a set of improvements to address bicycle and pedestrian safety, access to community centers, enhanced street aesthetics project-related stormwater improvements, and traffic calming measures that would be implemented as part of the project.

Discussion:



Community History Preservation Study

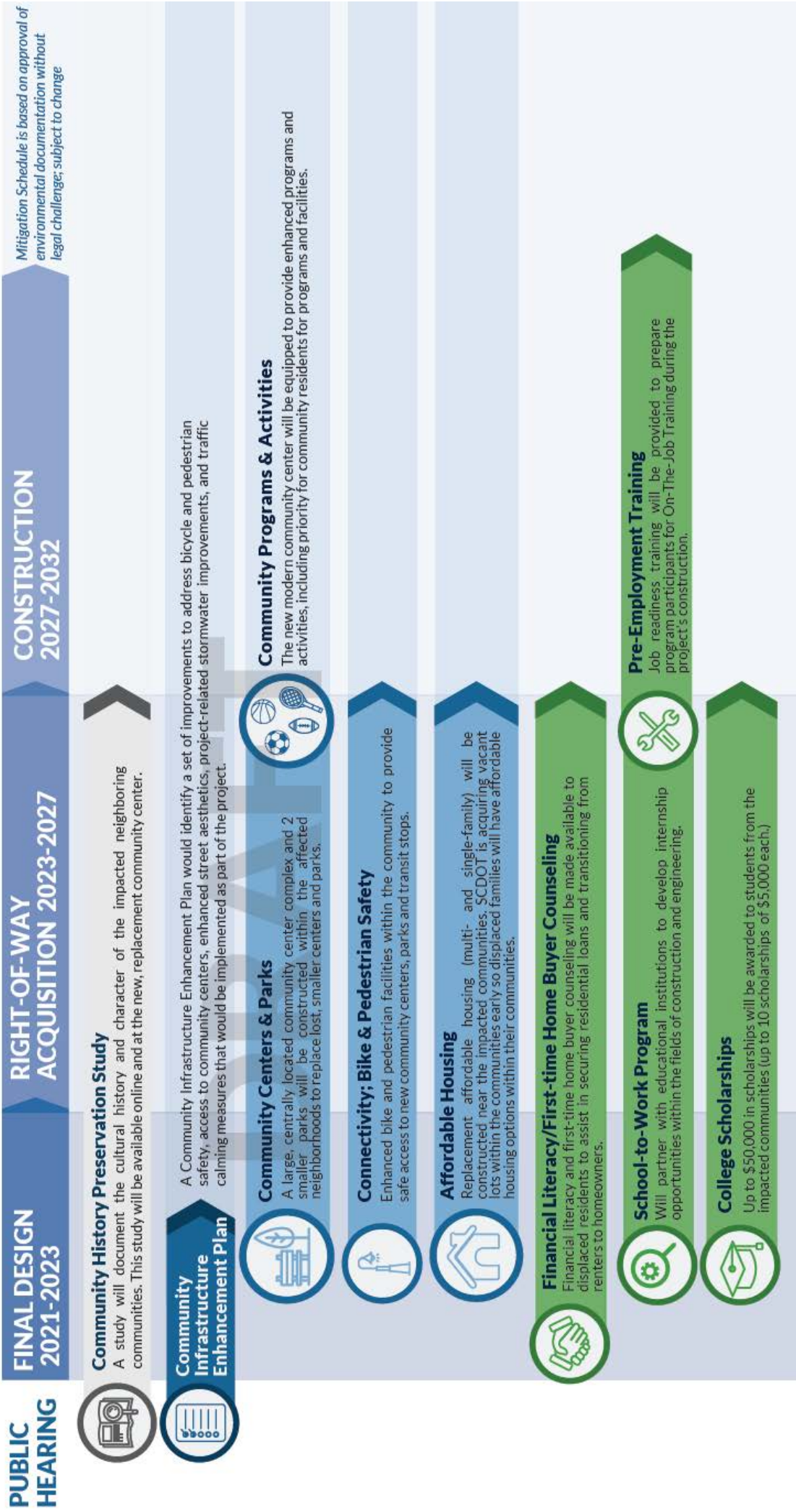
SCDOT will fund a study to document the cultural history and character of the impacted EJ communities through the support of a qualified historian and photographer. The study efforts will include collecting oral history, archival research, collection of historic photography, and the development of a report that will be available for viewing online and at the community center. The Community History Preservation Study will be complete within two years of the FEIS/ROD.

Discussion:

Project Schedule / Milestone Review

**WHAT IS PROPOSED TO
BENEFIT MY COMMUNITY? And When?**

PROPOSED SCHEDULE



**Schedule is tentative and subject to change*

Outreach Update

Getting the draft Community Mitigation Plan to your neighbors and collecting feedback:

➤ Traditional Mail

- Infographic highlighting the concepts
- Include options to receive more information
 - Obtain a copy of the draft plan from the Community Office
 - Download a copy from the project website
 - Request a mailed copy of the draft plan
 - Call the Community Office to discuss with a Liaison or the EJ Team
 - Request an appointment to discuss at the Community Office

➤ Online Engagement Options

- Video Series on the project website and social media sites
- MetroQuest – online public involvement tool/survey
- EJ Website
 - Project educational resource material
 - EJ Community Mitigation Commitments
 - Introduce the CAC
 - ✓ Purpose
 - ✓ Membership
 - ✓ Meeting notes

➤ Tele-Reach (*telephone-based options to reach residents and obtain feedback*)

- Project Hotline

➤ Invite Team526 to Your Meeting

➤ Hispanic/Latino Community Outreach

- Radio and Online engagement

***How can we best reach your neighbors to
gather feedback on potential mitigation ideas?***

Outreach Update

Magnet Outreach Effort

The I-526 LCC WEST team plans to send a neighborhood resource list as a magnet to the residents in the EJ neighborhoods. This magnet will be sent along with a letter from SCDOT Project Manager, Joy Riley, to encourage calls or appointments at the community office to discuss questions or concerns about the project with the community liaisons or Right-of-Way agents.

DRAFT
Neighborhood Resource List
Just for you!
(Ferndale, Highland Terrace, Liberty Park & Russelldale)

Emergency

EMS.....	911
Fire Station #3 Dispatcher.....	843-743-7200
Police Department.....	843-740-2800
Poison Control.....	800-222-1222
Animal Control.....	843-740-2815 (Office); 843-822-1094 (Cell)

Resources

Lowcountry Food Bank.....	843-747-8146
Trident Area Agency on Aging.....	843-554-2275
Emergency Preparedness.....	843-740-2884
North Charleston Code Enforcement.....	843-740-2672
Trident United Way.....	211
Clerk of Court.....	843-740-2601
Veterans Community Resources & Referral Center.....	843-789-6804

Medical

Roper St. Francis Emergency Room.....	843-824-8733
Nason Urgent Care Northwoods.....	843-773-9903
Trident Medical Center.....	843-797-7000
Bon Secours St Francis Hospital.....	843-402-1000
SC Department of Health & Environmental Control (DHEC).....	843-953-2450

City Government / North Charleston

Mayor's Office.....	843-740-2504
Councilman Sam Hart, Dist. 7.....	843-554-1249
Councilwoman Dorothy Williams, Dist. 6.....	843-735-1539
Councilman Bob King, Dist. 8.....	843-744-1041
Ombudsman Teddie Pryor.....	843-740-5819

DRAFT
Distributed by the SCDOT I-526 Lowcountry Corridor West Project

526

Visit our website: 526LowcountryCorridor.com
Call our hotline: 866-632-5262
Visit Facebook@526Corridor
To request special accommodations, contact 866-632-5262.

Outreach Update

Project Signs for Your Yard

The I-526 LCC WEST team needs your help to advertise the community office in order to best provide educational outreach opportunities for your neighbors. Please review the two sign options below. Which option would you prefer to see in your front yard?

QUESTIONS? COMMENTS? CALL US!



www.526lowcountrycorridor.com
843.258.1135

LET'S TALK!



www.526lowcountrycorridor.com
843.258.1135

Outreach Update



Want Fresh Fruits & Vegetables?

The ***Lowcountry Street Grocery (LSG)*** works with farmers in South Carolina to bring fresh food to communities and neighborhoods in the Lowcountry.

Their goal is to help make nutritious food affordable and available. If you need fresh food, please call the ***I-526 LCC WEST*** Community Office at **866.632.5262** and leave a message. The community liaisons will return your call and connect you with the folks at ***LSG***.

FYI, persons with ***EBT*** cards can spend \$5 and get \$15 in free produce, which equals the cost of one bundle of fresh food from ***LSG***.

LSG exists to help provide you with fresh fruits and vegetables!

Moving Forward

Next Steps: CAC Meeting #12 - September 19th

Notes

This image shows a blank sheet of white paper with horizontal ruling lines. The lines are evenly spaced and run across the width of the page. There are no margins, text, or other markings on the paper.