



Community Advisory Council Meeting #12

September 19, 2020

Table of Contents

- Neighborhood Update
- Russelldale Pocket Park Recap
- CAC Input | Draft Community Mitigation Plan
- Draft Community Mitigation Plan Update
- Draft Education and Employment Mitigation Initiatives
- Project Schedule/Milestone Review
- Draft Community Mitigation Timeline
- Outreach Update
- Summary and Next Steps

Neighborhood Update

- Ferndale
- Highland Terrace / Joppa Way
- Liberty Park
- Russelldale



Are there unanswered questions from the last meeting? Are there other items you would like to bring up with the CAC or project team?

Did you speak to any neighbors or residents who have questions or comments for the project team? Please note any specific items your neighbors would like to bring to the project team's attention.

Russelldale Pocket Park Recap

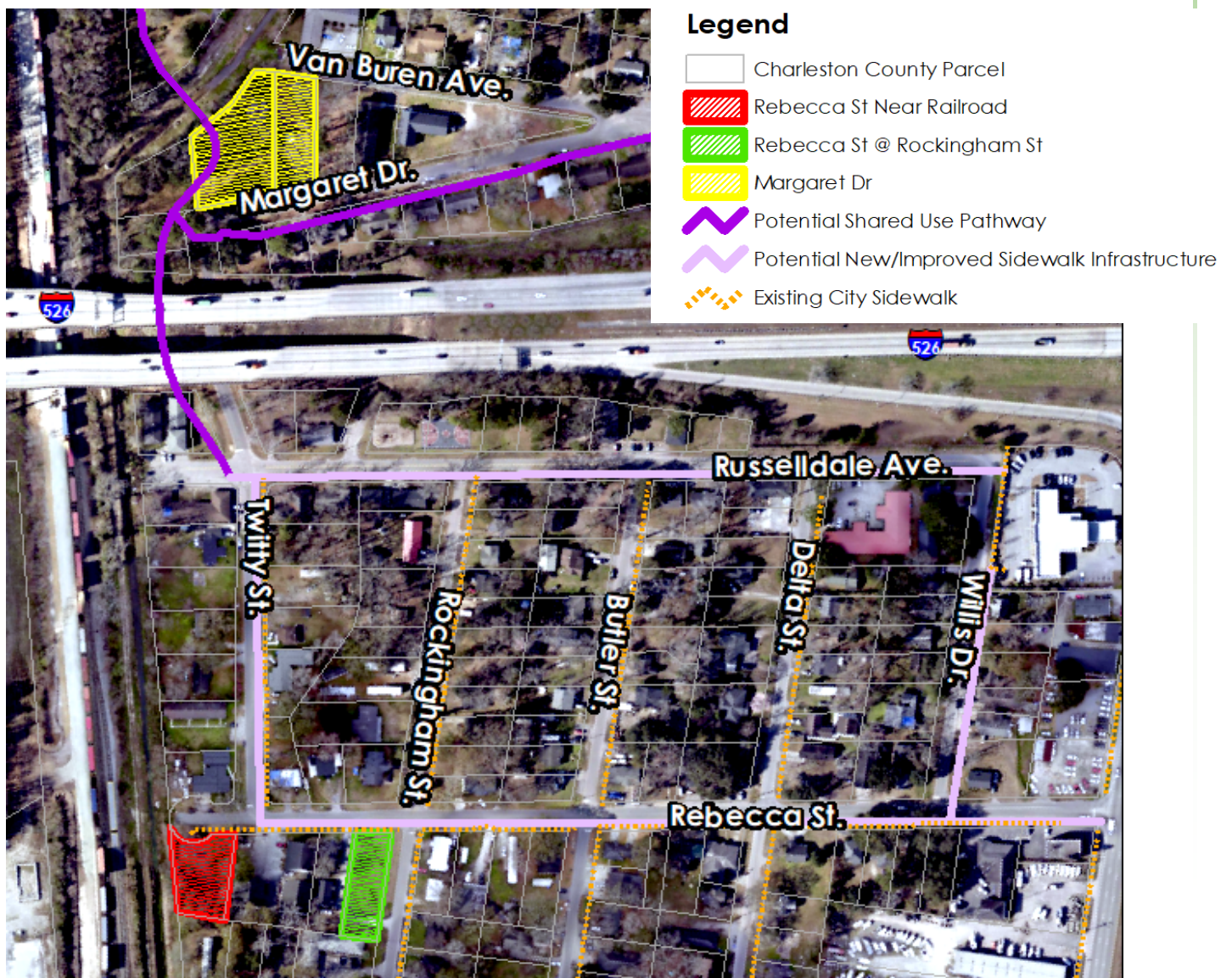
There are currently three options for the replacement of the facilities and amenities at the current Russelldale Community Center:

- Southwest corner of Rebecca Street /Rockingham Street intersection (Green)
- Western end of Rebecca Street near the Railroad (Red)
- Property between Margaret Drive and Van Buren Avenue (Yellow)

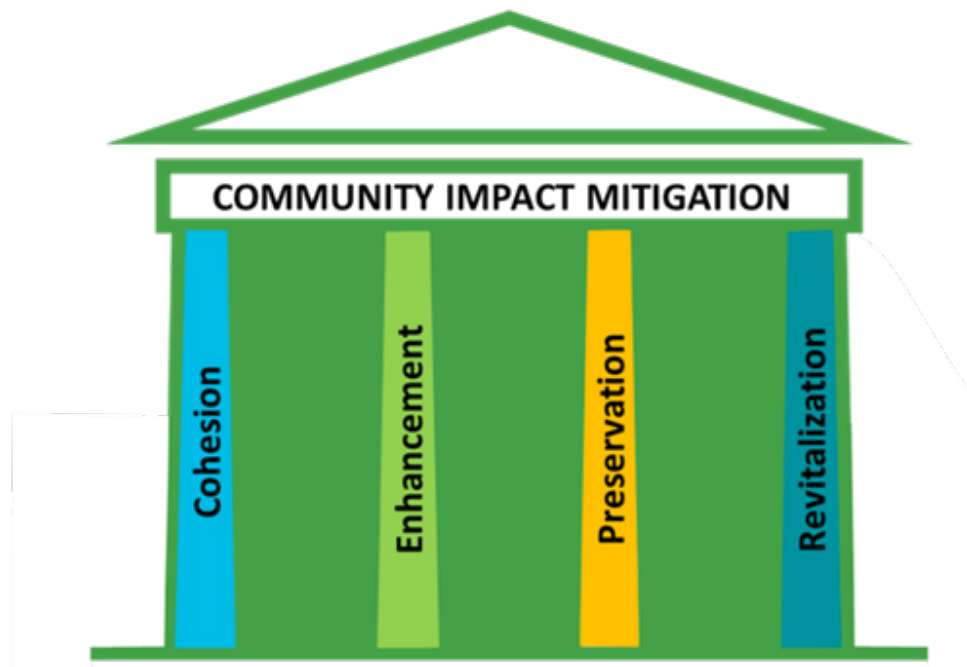
CAC members from Russelldale have provided opposing views regarding their preferences for the location of the Russelldale Community Center replacement facility.

- Mr. Grasso noted a preference for replacement facilities to be located on the parcel along Margaret Drive in Liberty Park (adjacent to the new community center).
- Ms. Anderson noted a preference for locating the replacement park amenities at the parcel at the corner of Rebecca and Rockingham Streets.

We would like consensus so we can document a preferred location.



CAC Input | Draft Community Mitigation Plan



REVITALIZATION: REPLACEMENT HOUSING AND EMPLOYMENT/ECONOMIC OPPORTUNITIES	
CAC/SNA FEEDBACK	SCDOT COMMUNITY MITIGATION MEASURE
Social Needs Assessment: Availability of quality housing #3 out of 25 Availability of affordable housing #4 out of 25 CAC Feedback: <ul style="list-style-type: none"> Prefer single-family rental units versus multi-family units/mobile homes/modular 	Affordable Housing Financial Literacy and First-time Home Buyer Counseling
<ul style="list-style-type: none"> Advocacy and self-advocacy – educational and financial resource 	Organizational Training College Aid Initiative School-to-Work Program Pre-employment Training

Please review the CAC/SNA feedback to ensure your community's needs were accurately identified. Note any additional questions or thoughts in the space below.

CAC Input | Draft Community Mitigation Plan

COMMUNITY PRESERVATION: INFRASTRUCTURE NEEDS	
CAC/SNA FEEDBACK	SCDOT COMMUNITY MITIGATION MEASURES
<p>Social Needs Assessment: Adequate stormwater management #1 out of 25 Adequate sidewalks/bicycle facilities #2 out of 25 Well-lit streets/sidewalks #8 out of 25</p> <p>CAC Feedback:</p> <ul style="list-style-type: none"> • Installation of speed humps to address speeding and general safety • Need to address sidewalk infrastructure needs and connectivity in neighborhoods • Pedestrian accommodations over/across Rivers Avenue; safety issues for veterans crossing at Patriots Villa across Rivers Avenue • Importance of safe, practical footpaths/sidewalks • Safety for bicycle riders • Address areas with inadequate streetlighting • Address areas of standing water • CARTA/shuttle bus (with seats) to transport residents, morning and evening • Bus shelters with covers and seating 	<p>Connectivity and Bicycle & Pedestrian Safety</p>
<ul style="list-style-type: none"> • Remove barriers to residents' ability to 'age in place' 	<p>Not addressed by draft Community Mitigation Plan **The Community Resource Guide being developed by Maximum Consulting will identify programs and resource contacts</p>
<ul style="list-style-type: none"> • Potential partnerships with local college nursing programs to develop health and wellness program for senior residents 	

Please review the CAC/SNA feedback to ensure your community's needs were accurately identified. Note any additional questions or thoughts in the space below.

CAC Input | Draft Community Mitigation Plan

COMMUNITY ENHANCEMENT: COMMUNITY CENTER AND RECREATIONAL FACILITY REPLACEMENT	
CAC/SNA FEEDBACK	SCDOT COMMUNITY MITIGATION MEASURES
<ul style="list-style-type: none"> • Installation of traffic calming measures • Installation of speed humps to address speeding and general safety 	Connectivity and Bicycle & Pedestrian Safety
<ul style="list-style-type: none"> • Need for advocacy training to prepare for CAC transition to POC • Networking opportunities 	Organizational Training
<p>Social Needs Assessment: Services for seniors: #5 out of 25 Services for youth: #6 out of 25</p> <p>CAC Feedback:</p> <ul style="list-style-type: none"> • Pedestrian bridge to help children and other community center users avoid traffic • Concerns about walkability for children to the proposed community center • CAC agreeable to evaluate one, centrally located facility and smaller pocket parks due to limited availability of large and/or contiguous vacant/underdeveloped parcels • Residents' first choice options (amenities) should be included in the intergovernmental agreement • CAC input in the intergovernmental agreement with the City of North Charleston • "Neighborhood" center vs. community center (CAC does not want a box design) • Facility should be broad scale in design, diverse use, forward-thinking, multi-faceted • Include history in community center 	Recreation Facilities and Amenities Recreation Programs and Activities Connectivity and Bicycle & Pedestrian Safety Community History Preservation Study

Please review the CAC/SNA feedback to ensure your community's needs were accurately identified. Note any additional questions or thoughts in the space below.

CAC Input | Draft Community Mitigation Plan

COMMUNITY COHESION: ACTIONS THAT STRENGTHEN NEIGHBORHOOD CONNECTIONS	
CAC/SOCIAL NEEDS ASSESSMENT FEEDBACK	SCDOT COMMUNITY MITIGATION MEASURES
CAC Feedback: <ul style="list-style-type: none"> • More access to community center for community children; “neighborhood” center versus “community” center • Center staffed by neighborhood residents with scheduled activities that engage the community • Center staff need to be qualified to run the center • Crime prevention through well-lit streets; going above code for minimum requirements for spacing of streetlights • Sense of ownership through well-defined private/public areas; directional signs, landscaping, and informal common areas 	Recreation Facilities and Amenities Recreational Programs and Activities Connectivity and Bicycle & Pedestrian Safety Organizational Training
CAC Feedback: <ul style="list-style-type: none"> • Pedestrian bridge to help children and other community center users avoid traffic • Concerns about walkability for children to the proposed community center 	Community Infrastructure Enhancement Plan
CAC Feedback: <ul style="list-style-type: none"> • Crime prevention through lighting design and maintenance (CPTED principle) • Surveillance cameras as crime prevention measure • Convey sense of ownership of public spaces as crime deterrent by maintaining areas in public domain (CPTED principle) 	Community Infrastructure Enhancement Plan
Social Needs Assessment: Appearance of neighborhood homes #9 out of 25 CAC Feedback: <ul style="list-style-type: none"> • Need to eliminate abandoned properties/overgrown lots • Crime prevention through increased law enforcement presence • Community yard sale to foster community cohesion 	Not addressed by draft Community Mitigation Plan

Please review the CAC/SNA feedback to ensure your community’s needs were accurately identified. Note any additional questions or thoughts in the space below.

Draft Community Mitigation Plan Updates

COMMUNITY INFRASTRUCTURE ENHANCEMENT PLAN

The *Community Livability Plan* concept has transitioned to a *Community Infrastructure Enhancement Plan (CIEP)*

“A CIEP would identify a set of improvements to address bicycle and pedestrian safety, access to community centers, enhanced street aesthetics project-related stormwater improvements, and traffic calming measures that would be implemented as part of the project.”

SIMILARITIES

- Requires community involvement
- Identifies infrastructure improvements needs
- Develops a written document to summarize recommendations

DIFFERENCES

- *Community Livability Plan*
 - Focuses on identifying a broader range of community social and infrastructure needs
 - Requires a more intense public engagement process
 - Involves a longer study timeframe --- completion within 1 year after the FEIS/ROD approval date (Approximate 2-year duration)
 - Identifies partnerships to assist in addressing community needs identified through the study process
 - No commitment required from SCDOT or the City to fund all identified needs
- *Community Infrastructure Enhancement Plan (CIEP)*
 - Focuses solely on identifying infrastructure improvements and includes separate technical studies to identify various infrastructure needs.
 - Involves a shorter study timeframe -- completion prior to the approval of the FEIS/ROD (Approximate 1-year duration)
 - Commitment by SCDOT to construct or address specified infrastructure needs prior to construction of I-526 improvements.

Draft Community Mitigation Plan Updates

WEATHERIZATION

- Weatherization of homes in the impacted EJ neighborhoods was evaluated to determine if it would be applicable as mitigation for project-related impacts.
- The draft Community Mitigation Plan currently **does not** include weatherization for the following reasons:
 - The needs that would be addressed by home weatherization improvements exist with or without the roadway improvements which will be constructed by the I-526 LCC-WEST project
 - There is not a direct connection between weatherization goals and the impacts resulting from the I-526 / I-26 improvements
- How can residents receive weatherization and energy-efficiency outside of project mitigation?
 - Neighborhood Energy Efficiency Program (Dominion Energy)
 - Palmetto Community Action Partnership
<http://www.palmettocap.org/menus/weatherization.html>
 - The Sustainability Institute
<http://sustainabilityinstitutesc.org/ecc/weatherization/>

How can the local weatherization resources be better utilized in the EJ communities?

Draft Education and Employment Mitigation Initiatives



School-to-Work Program

SCDOT will develop partnerships with educational institutions to develop school-to-work employment programs with the goal of enhancing employment opportunities within the fields of construction and engineering. Each year high school and/or college students from the impacted neighborhoods can participate in the program through the completion of the project.



Pre-employment Training

This program will be established prior to construction to provide training and job readiness skills to individuals from the affected communities. SCDOT will determine the number of participants required completing the program and the program will be the responsibility of the contractor. The contractor's program plan and curriculum will be reviewed and approved by SCDOT. Graduates of this program will be considered for participation in On-The-Job Training (OJT) Program.



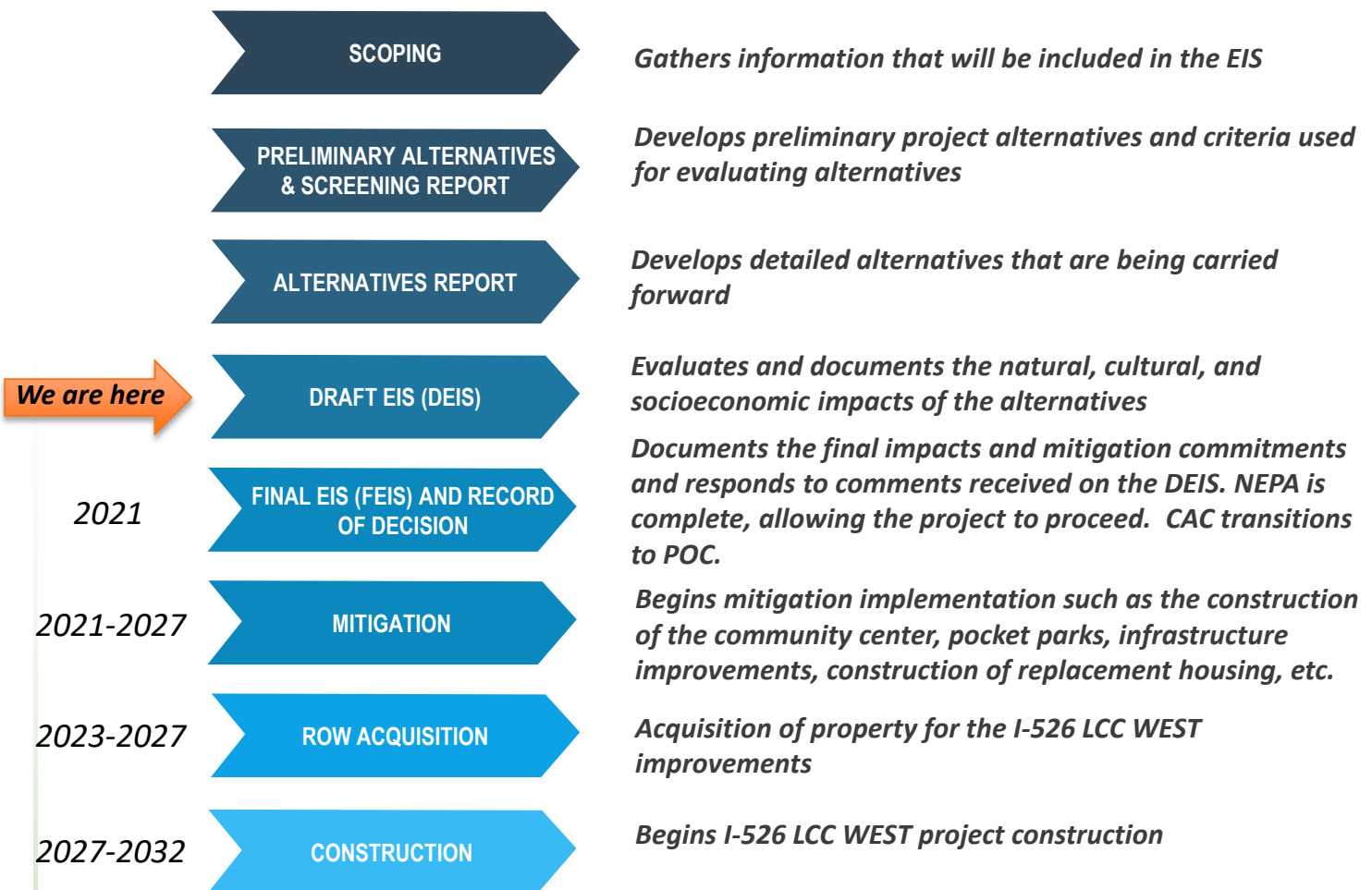
College Aid Initiative

Prior to construction, SCDOT will develop a partnership with educational institutions and provide up to \$50,000 to fund a scholarship program. The scholarship program will be for high school and college students from the impacted EJ communities that intend to or currently attend the selected educational institutions.

WE NEED YOUR INPUT:

Are there members from each community that would like form a subcommittee to determine how best to implement the Educational and Employment Mitigation Initiatives?

Project Schedule / Milestone Review



Outreach Update

➤ Draft Mitigation Plan Mailer Feedback

The overarching goal of the I-526 Lowcountry Corridor WEST Community Mitigation Plan is to effectively mitigate project impacts in partnership with residents of the Ferndale, Russelldale, Highland Terrace, Liberty Park neighborhoods.

WHAT IS MITIGATION? noun [mit-i-gey-shuhn] the act of lessening the force or intensity of something unpleasant

The 4 Pillars of Community Mitigation for Transportation Improvements

- Cohesion**
To provide a common vision and sense of belonging for residents who may have been divided
- Enhancement**
To increase the value, quality and attractiveness of a community by providing aesthetic improvements and replacing lost recreational amenities
- Preservation**
To connect the neighborhood's past, present, and future to encourage residents of all ages to thrive despite relocation impacts
- Revitalization**
To restore employment opportunities, safety, and affordable housing that has been diminished

Additional details and new mitigation measures may be added to this Community Mitigation Plan after the Public Hearing and public comment on this proposed mitigation plan. The final Plan will be included in the final environmental document and will include all agreements and plans for mitigation implementation.
It's important to provide your comments now, so they are considered in this plan!

Community Mitigation Plan Highlights

Background
Every effort was made to avoid and minimize impacts to your community during the development of the project alternatives. However, because of the close proximity of many communities to the existing interstate, significant community impacts were unavoidable in all reasonable alternatives and would require community mitigation.

Community Mitigation Plan
Developed by identifying & considering the social needs & priorities of neighborhood residents

Community Office
In November 2019, a Community Office was opened within walking distance of potentially impacted communities. Located in Gas Light Square at 5627 Rivers Avenue (CARTA Route 10), the Community Office is where you can meet one-on-one with the project team and connect with resource specialists such as right-of-way relocation experts.

CAC's Role
Advise
Connect
Represent
Communicate

Community Advisory Council (CAC)
A Community Advisory Council (CAC) was formed as a resident-lead group to facilitate meaningful engagement.

Survey
The CAC and residents of the potentially impacted neighborhoods completed a Social Needs Assessment (SNA) survey to provide a insight into the daily operations, needs, and desires of the community.

Your Input Matters!
NOW is the time to have your voice heard!
Complete our survey & leave a comment by January 15, 2021
www.526LowcountryCorridor.com

Make an appointment at our Community Office (5627 Rivers Avenue, Gas Light Square)
info@526LowcountryCorridor.com 843.258.1135 866.632.5262 (Toll Free)
SCDOT Project Manager Joy Riley, PE, DBIA, PMP, CPM 526Corridor @526Corridor

Please review the draft Community Mitigation Plan mailer that was included in your packet and provide feedback here:

➤ EJ Community Town Hall Meetings | Draft Community Mitigation Plan

Previous discussions have suggested that neighborhood virtual meetings may be a useful tool for reviewing and explaining the items within the draft Community Mitigation Plan to residents within the EJ communities.

In your opinion, what is the best way to garner interest in these meetings?

Outreach Update

PROJECT YARD SIGNS

Please see below for the final English and Spanish versions of the project yard signs that will be handed out at the Sept 19, 2020 CAC Meeting #12. Please place this sign in your yard where passing cars and neighbors can easily see it. Thank you!!

Questions? Comments? Call Us!



www.526LowcountryCorridor.com
843.258.1135

¿Preguntas? ¿Comentarios? ¡Llámanos!



www.526LowcountryCorridor.com
843.258.1135

METROQUEST ONLINE SURVEY

The draft Community Mitigation Plan is scheduled to be available to the public starting at the beginning of October 2020. To gather feedback, the project team has developed an online survey and would like input from the CAC before publishing it for public engagement.

We will walk through the survey during CAC Meeting #12

Main topics include:

- Project communication methods
- Community Center Recreation Programs
- Community Center Amenities
- Infrastructure improvements

Outreach Update

Maximum Consulting On-going Outreach

- Lowcountry Back-to-School Giveaway Highlights
- Community Info Box Update
- Magnets Outreach Update

NEIGHBORHOOD RESOURCE LIST

FERNDALE • HIGHLAND TERRACE
LIBERTY PARK • RUSSELDALE

Just for you!

EMERGENCY

Fire – Police – Ambulance 911

Animal Control 843-740-2815 (Office); 843-822-1094 (Cell)

Police Department (Non-Emergency Line) 843-740-2800

Poison Control 800-222-1222

RESOURCES

Lowcountry Food Bank 843-747-8146

Trident Area Agency on Aging 843-554-2275

Trident United Way 211

Veterans Community Resources & Referral Center ... 843-789-6804

MEDICAL

Bon Secours St Francis Hospital (West Ashley) 843-402-1000

Medical University of South Carolina (Downtown) 843-792-3826

Nason Urgent Care Northwoods (N Charleston) 843-773-9903

Roper St. Francis Emergency Room (N Charleston) .. 843-824-8733

SC Department of Health & Environmental Control .. 843-953-2450

Trident Medical Center (N Charleston) 843-797-7000

Centre Pointe Emergency (N Charleston) 843-746-2400

CITY GOVERNMENT / NORTH CHARLESTON

City of North Charleston, Information 843-554-5700

Clerk of Court 843-740-2601

Emergency Preparedness 843-740-2884

North Charleston Code Enforcement 843-740-2672



*Distributed by the
SCDOT I-526 Lowcountry
Corridor WEST Project*

www.526LowcountryCorridor.com

843-258-1135 **f** **t** **@526Corridor**

Community Office: 5627 Rivers Ave. (Gas Lite Square)

Moving Forward

Next Steps: CAC Meeting #13 - October 3rd

Notes

This image shows a blank sheet of white paper with horizontal ruling lines. The lines are evenly spaced and extend across the width of the page. There are no margins, text, or other markings on the paper.