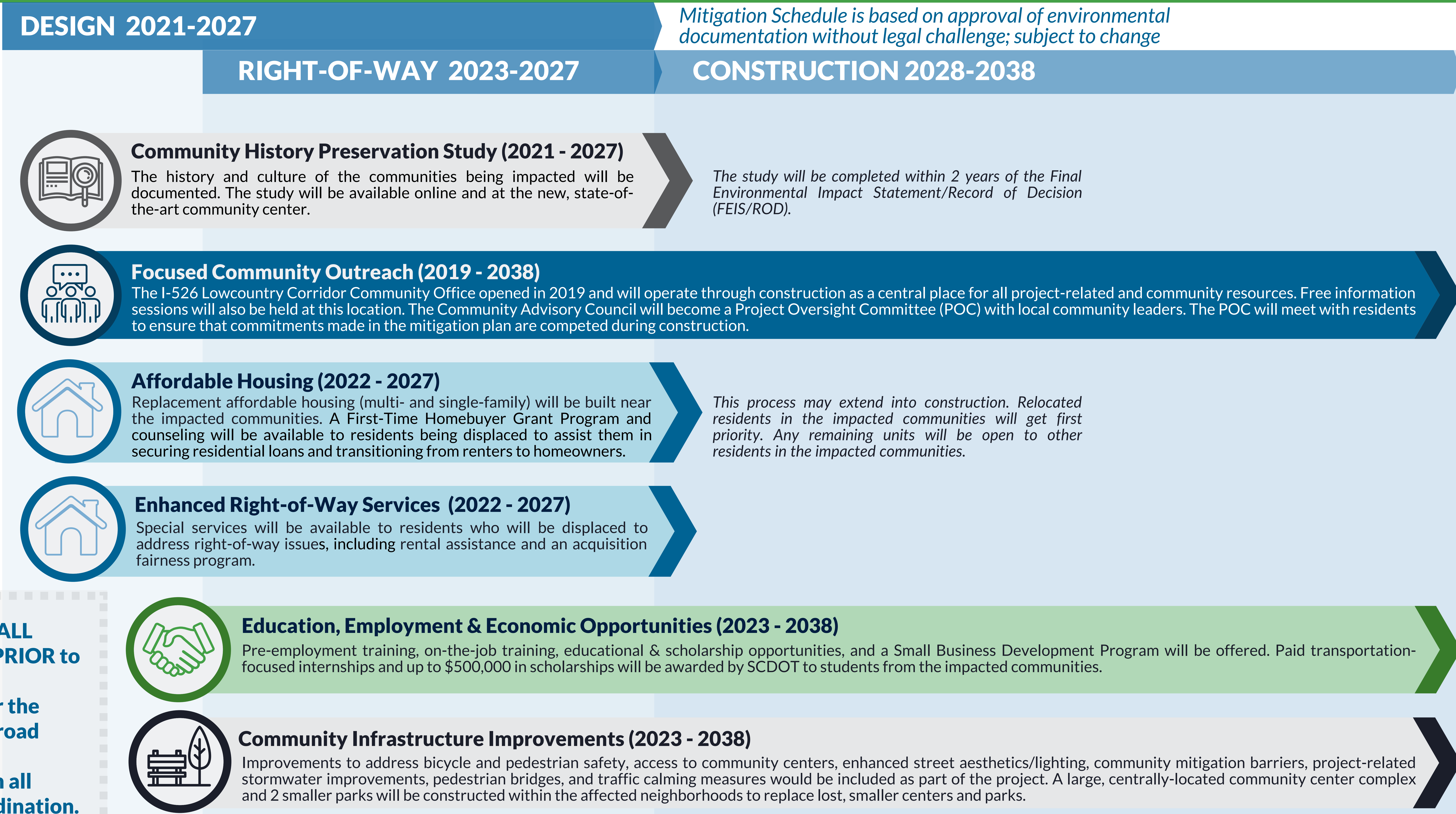




Proposed Mitigation Schedule



SCDOT will implement ALL community mitigation PRIOR to the interstate project construction, except for the mitigation barriers, railroad crossing upgrades and a pedestrian bridge which all require additional coordination.

Making the Most of Today's Meeting

YOUR comments made a difference



Note the "**NEW**" and "**UPDATE**" banners on the boards and in the handout to see how your comments made a difference



Give feedback at each station to help with implementation!



Leave a comment today!

Make an appointment at our Community Office (5627 Rivers Avenue, Gas Lite Square) for assistance!

Community Advisory Council Transitions to Project Oversight Committee

Community Advisory Council (CAC)

Established in 2019, the CAC is a group of local citizens who represent the Environmental Justice (EJ) neighborhoods that would be impacted by the I-526 LCC WEST project (Ferndale, Highland Terrace, Joppa Way, Liberty Park, and Russelldale). The CAC plays an important role in sharing the latest information with the community, so residents remain engaged.



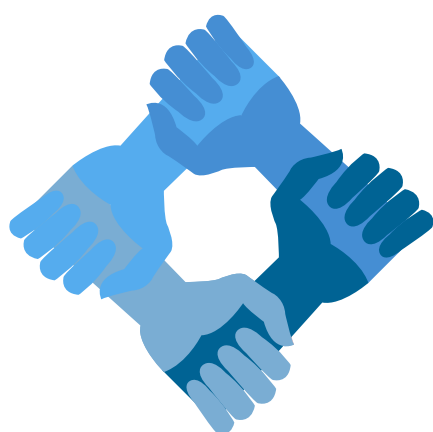
Project Oversight Committee (POC)

After the Final Environmental Impact Statement (FEIS)/Record of Decision (ROD) is approved, SCDOT will assist with the creation of a POC to ensure the promises made in the mitigation plan are implemented. Prior CAC members and/or EJ neighborhood residents interested in getting involved with the project will be encouraged to participate on the POC.

Interested in getting involved?

✉ info@526LowcountryCorridor.com
☎ 843.258.1135 (Call or Text)

CAC's Role



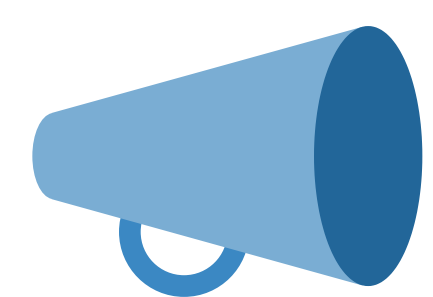
Advise



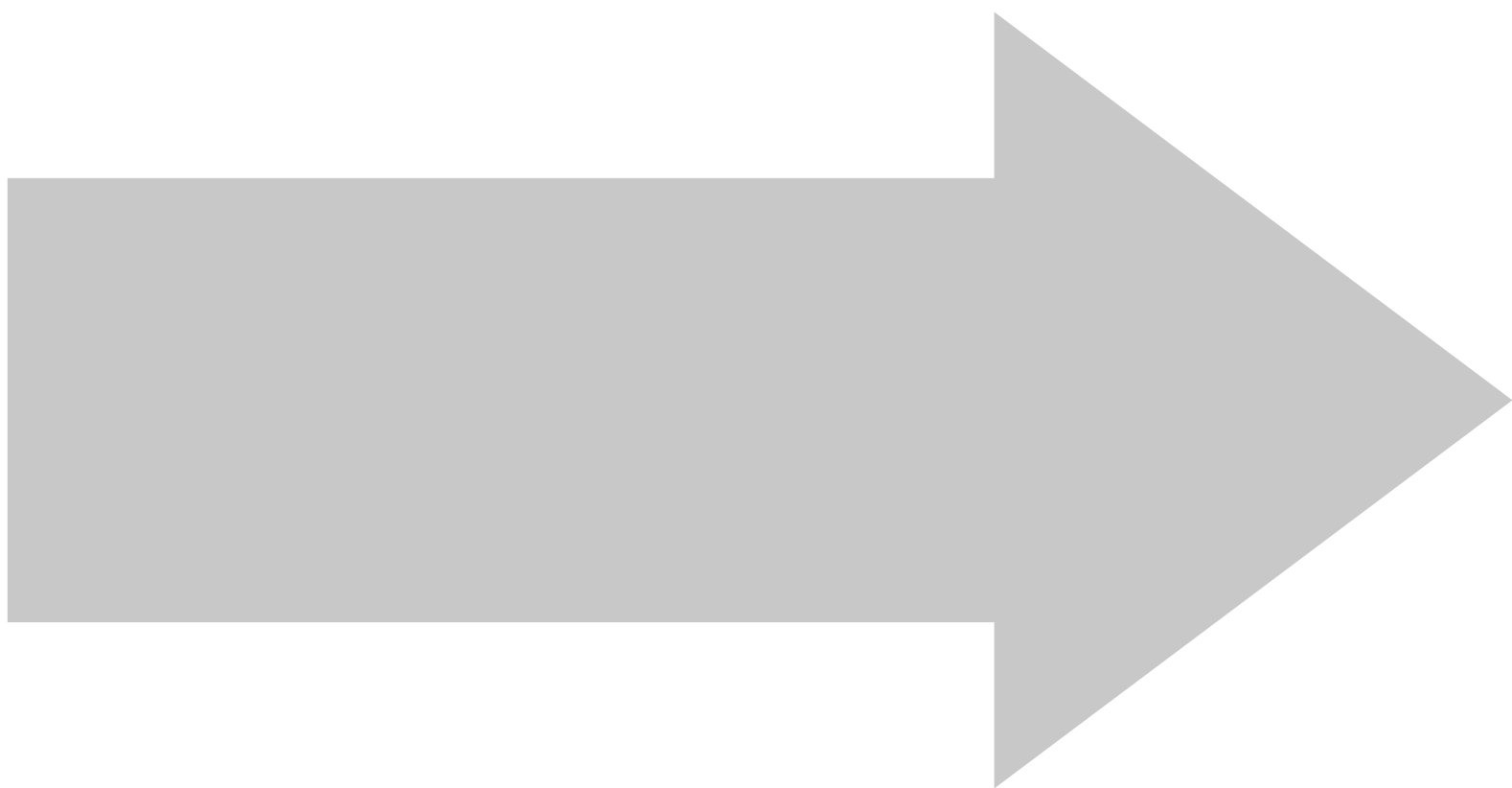
Connect



Represent



Communicate



POC's Role



Coordinate with
Project Staff



Monitor Progress



Represent



Communicate

SCDOT will provide **organizational training** for community members from Ferndale, Highland Terrace, Joppa Way, Liberty Park and Russelldale interested in creating a community advocacy organization.

What types of Community Workshops would you be interested in?

Place a dot by your top 3 ideas.

- Be aware! (community policing)
- Are you spending wisely? (financial planning)
- Staying alive! (CPR & First Aid training)
- Meet your new neighbors! (The Opportunity Center, a unique, collaborative workspace & economic hub for minority and underserved entrepreneurs)

Have another idea? Add it here too!



Education & Employment Opportunities 2023-2038

Programs will begin in 2023. Priority will be given to residents of Ferndale, Highland Terrace, Joppa Way, Liberty Park, and Russelldale. However, residents from all neighborhoods identified in the I-526 LCC WEST Environmental Justice (EJ) analysis report are eligible to participate.

UPDATE



College Aid Initiative

- Scholarship fund of **up to \$500,000** (increased from \$100,000)
- High school and college students from the impacted EJ neighborhoods are eligible for the scholarship
- Funds will be available while the project is in construction or until all scholarship funds have been awarded

UPDATE



Summer Transportation Institute

- Skill-building for high school students to learn about career opportunities in transportation
- The program will be offered each summer throughout the project construction
- Priority for students from Ferndale, Highland Terrace, Joppa Way, Liberty Park, and Russelldale **for up to 50% of the slots per year**

UPDATE



School-to-Work Program

- Partner with organizations to develop school-to-work employment programs in construction, engineering, and transportation
- During the right-of-way phase, an internship program will be funded by SCDOT to provide **20 internships** (increased from 10) in transportation to high school or college students from the impacted EJ neighborhoods



Employment & Economic Opportunities 2023-2038

Programs will begin in 2023. Priority will be given to residents of Ferndale, Highland Terrace, Joppa Way, Liberty Park, and Russelldale. However, residents from all neighborhoods identified in the I-526 LCC WEST Environmental Justice (EJ) analysis report are eligible to participate.

NEW

Small Business Development Program

SCDOT will create an educational program to bring awareness to the **generational wealth benefits** of entrepreneurship. SCDOT will partner with organizations and other disadvantaged business enterprises (DBE) in the state to **develop and deliver an educational program for those interested in learning more about starting a small business enterprise (SBE).**

The Goal: provide training and bring awareness about small business resources and the benefits and programs offered in South Carolina



Information sessions will be held and additional opportunities to work on the I-526 LCC projects will be offered for disadvantaged business enterprises.

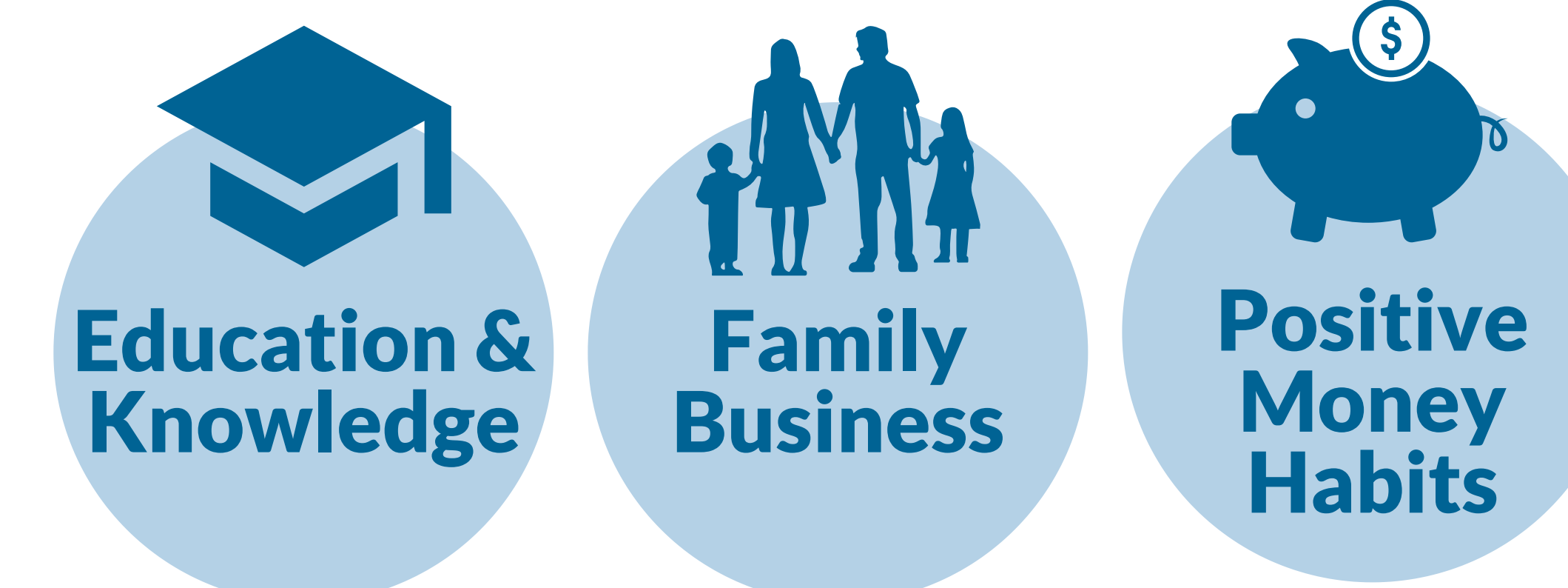
Pre-Employment Training

SCDOT will identify and provide financial support for pre-employment training opportunities that encourage career placement in the transportation industry. The program will be administered through the Community Office prior to construction of the interstate improvements. Priority will be given to residents of Ferndale, Highland Terrace, Joppa Way, Liberty Park, and Russelldale.

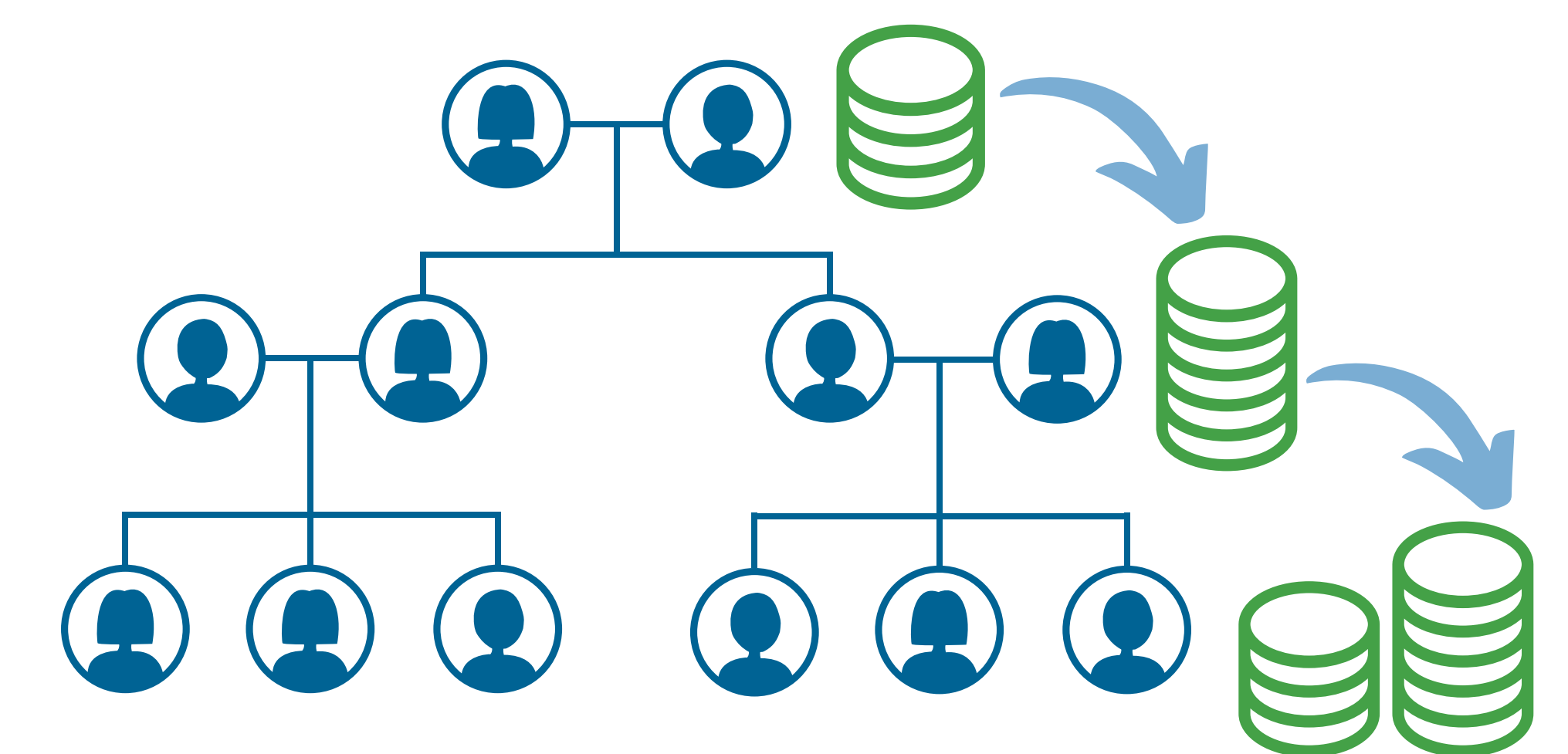
What is Generational Wealth?

Generational wealth allows parents to give their children more options in life by passing down assets like cash, stocks, and property.

Generational wealth also includes the passing down of:



Passing wealth from a previous generation to the next, benefitting the next generation



Community History Preservation Program

Share your Stories!

What are some fun memories that you have of your community?

What was one of your favorite community events (i.e. festival, gathering, parade)?

Who are some interesting people you have met in your community?

Why do we need a community history preservation plan?

The communities of Ferndale, Highland Terrace, Liberty Park, and Russelldale have a rich cultural history. The development of transportation infrastructure in North Charleston has continually impacted these communities, shaping episodes of growth and decline. The Community History Preservation Program will document their rich history by including:

- Interviews with current and past residents,
- Historic photographs of the communities prior to the construction of I-26, I-526, and other recent developments, and
- Recent images of the communities. This study started in 2021.

Stay engaged—participate in interviews, share historic images, and provide information to document the unique historic and cultural elements of your community! Based on community feedback, this study will also gather design concepts to be incorporated in the appearance of the new community center. Upon completion, a final report will be available at the new community center, the public library, and online.

History Preservation Program Contact

Professor Damon Fordham

843.258.1135

damon.fordham@stantec.com

 **Community Office**
5627 Rivers Avenue, Gas Lite Square

Additional Contact: Ellen Brady, 757.831.3979

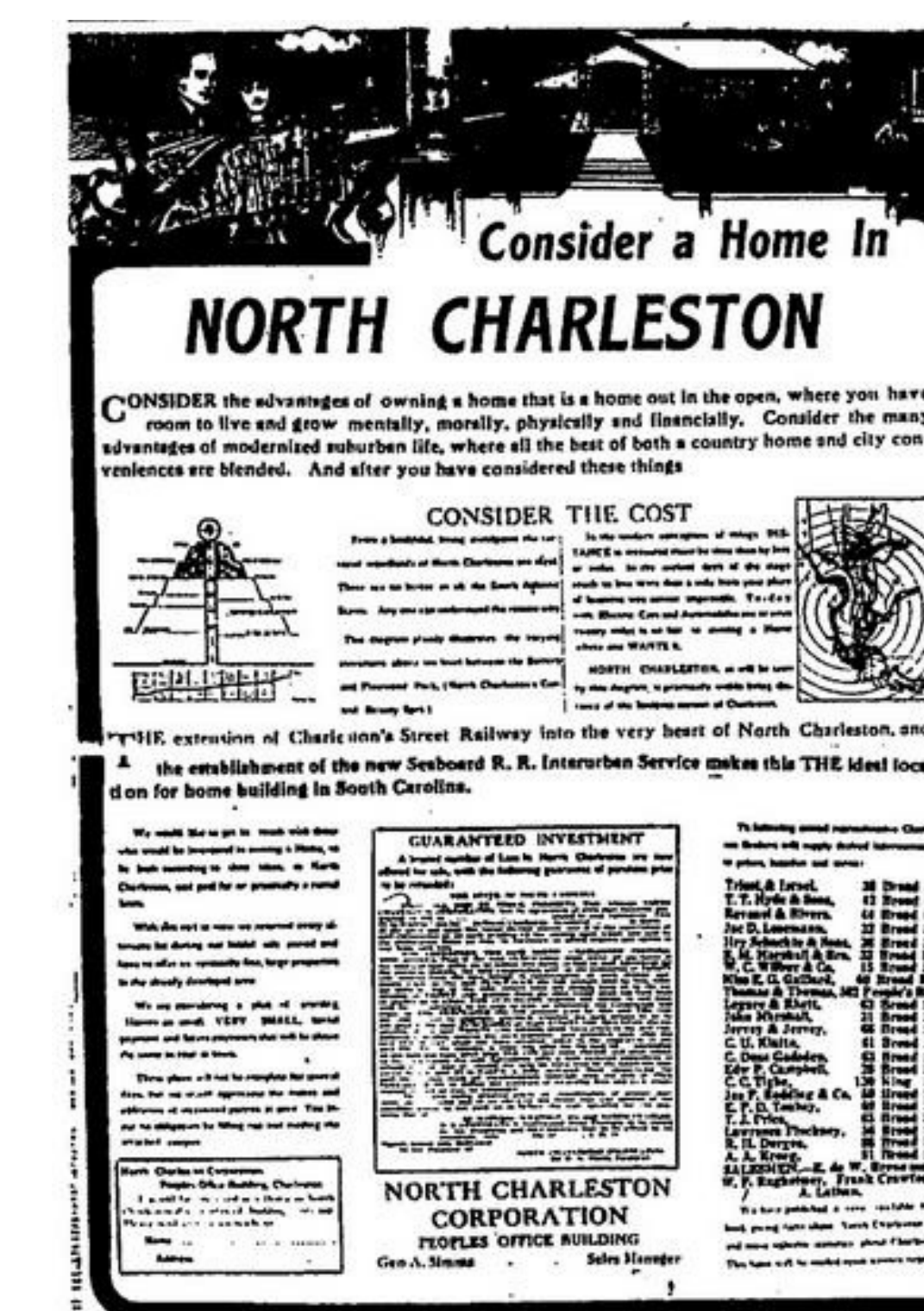
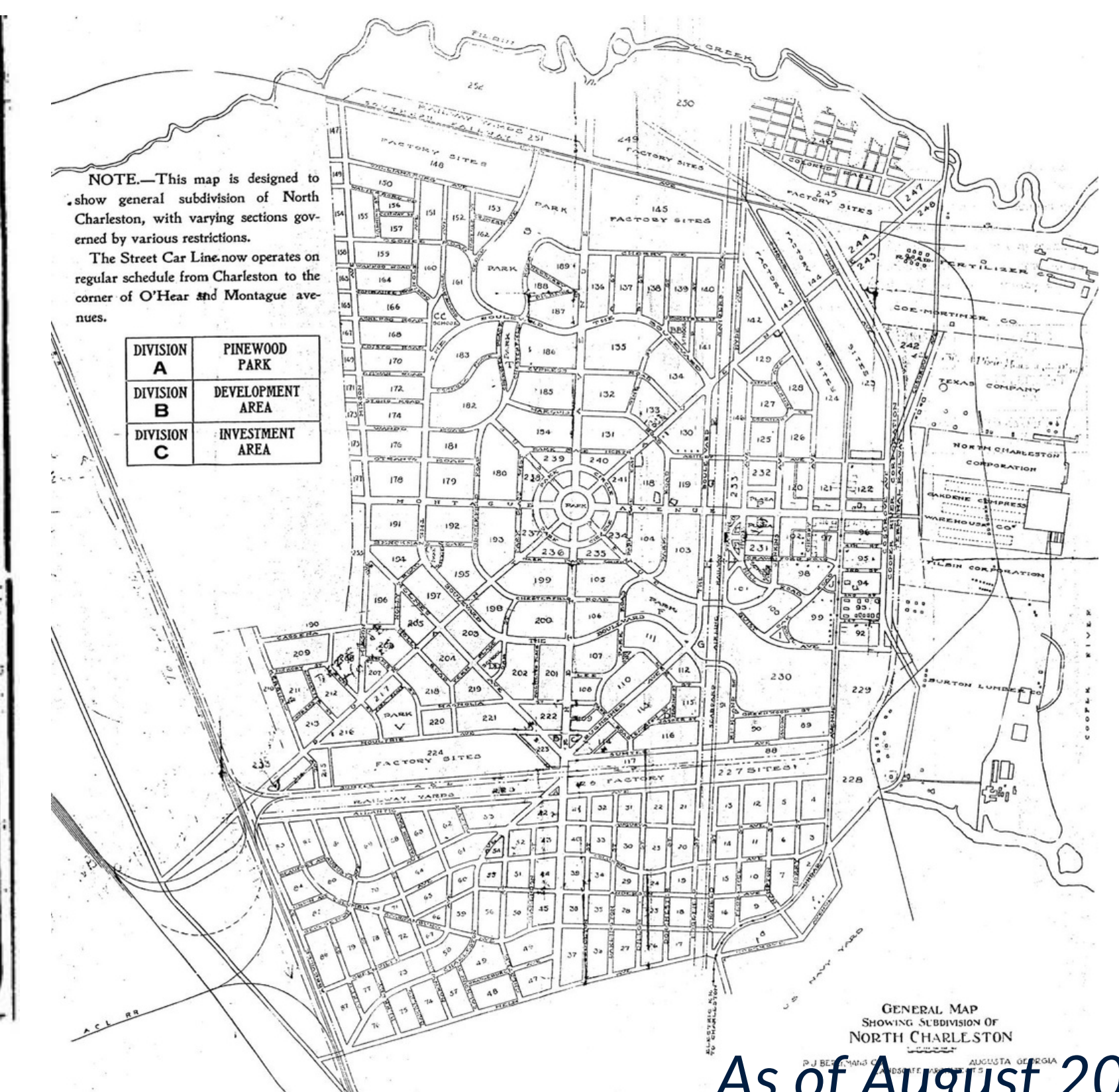


Figure 5.6
Advertisement for North Charleston, April 12, 1915



As of August 2022

UPDATE

Replacement Affordable Housing

- SCDOT is partnering with the South Carolina State Housing, Finance & Development Authority to **build 100 new affordable housing units**:
 - with a mixture of sizes (1-3 bedrooms),
 - as close to Ferndale, Highland Terrace, Liberty Park and Russelldale as possible.
- SCDOT is looking for **45 residential lots** (increased from 20) in Ferndale, Highland Terrace, Liberty Park and Russelldale and will partner with a local non-profit to develop a Single-Family Affordable Replacement Housing Program.
- Homes will have **direct access to transit** and convenient access to the proposed **Lowcountry Rapid Transit (LCRT) System**.
- Relocated residents in Ferndale, Highland Terrace, Liberty Park, and Russelldale will get priority.

May extend past 2027 into construction



NEW



First-Time Homebuyer Grant Program

SCDOT will partner with an agency to administer financial grants for **down payment assistance for first-time homebuyers**.



Financial Literacy and First-Time Homebuyer Counseling

SCDOT will develop partnerships with local organizations to provide group and individual financial literacy and first-time homebuyer counseling. The purpose is to help residents secure residential loans and transition from renting to homeownership.

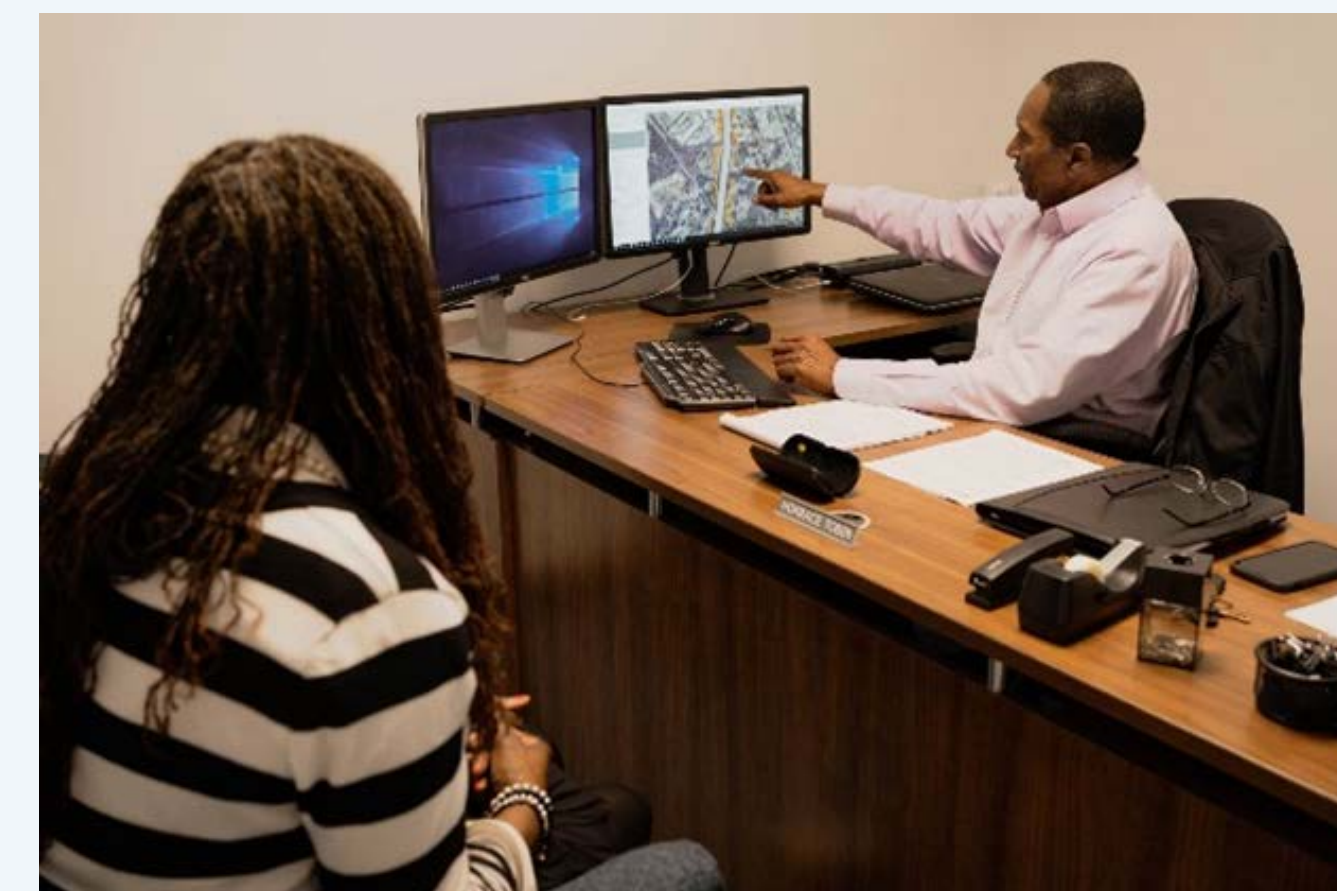


Priority will be given to residents of Ferndale, Highland Terrace, Joppa Way, Liberty Park, and Russelldale. However, residents from all neighborhoods identified in the I-526 LCC WEST Environmental Justice (EJ) analysis report are eligible to participate.

Enhanced Advisory Services

Right-of-way advisory services, including in-house SCDOT right-of-way liaisons, will be available at the Community Office for impacted residents. **Services will also include:**

- Homebuyer assistance
- Section 8 coordination
- Affordable housing coordination
- Transportation for viewing properties



NEW



Acquisition Fairness Program

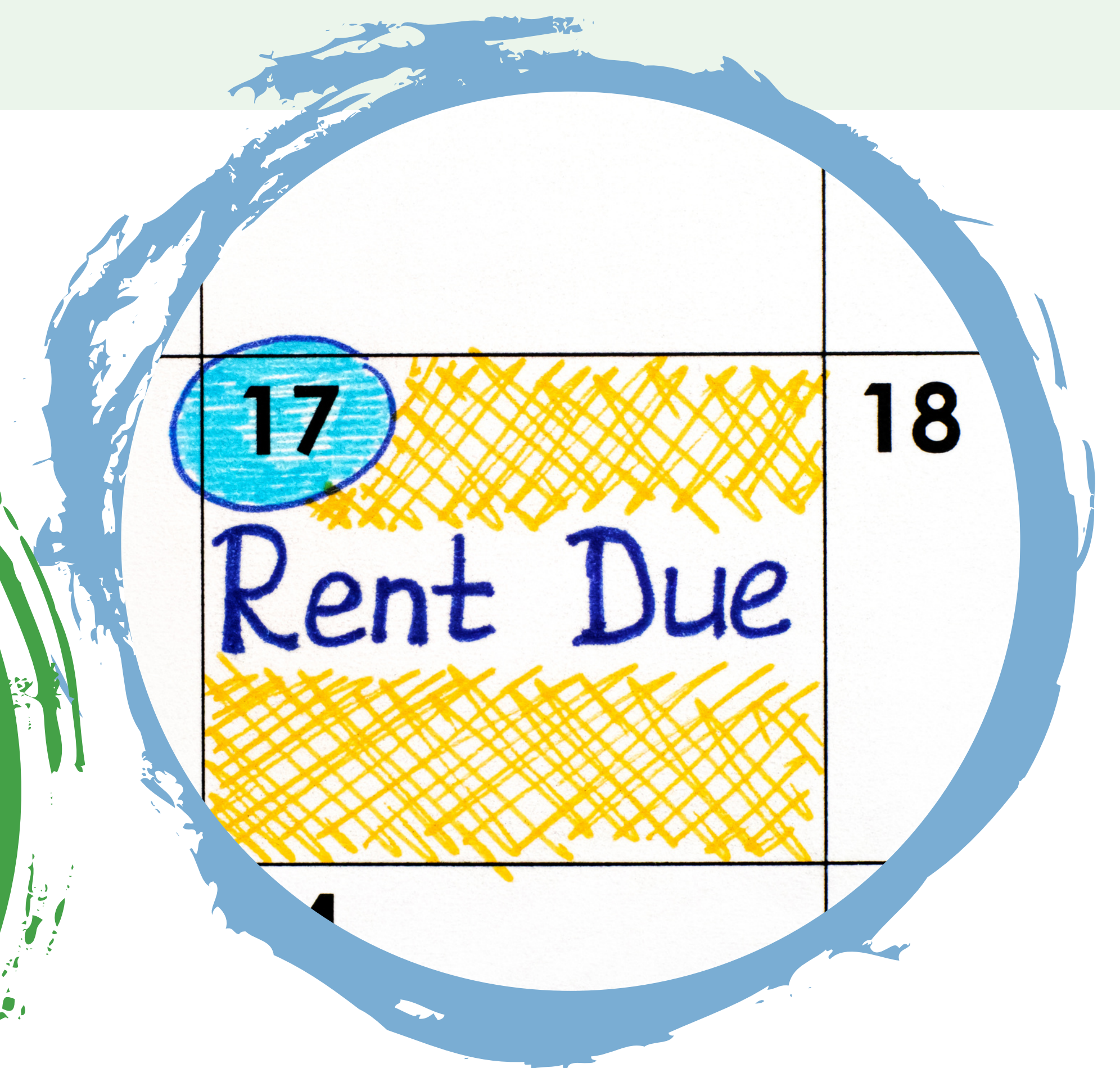
- **Independent property appraisals** paid by SCDOT for **second opinions of property value**
- Owners may be eligible for **additional Mitigation Payments** to address property values impacted by previous public acquisitions or zoning changes.

NEW



Enhanced Relocation Mitigation Assistance

SCDOT will offer **additional supplemental rental mitigation payments** based on income and rent for up to **an additional 18 months** (in addition to 42 months provided under the Uniform Act). Businesses may also be eligible for an additional mitigation payment to cover their actual expenses in reestablishing their business above the maximum amounts allowed under state and federal law.



UPDATE

Mitigation Barriers (Walls)

Mitigation barriers are walls constructed along a highway to protect sensitive land-uses, such as homes, from impacts associated with transportation projects.

Where will SCDOT construct mitigation barriers?

- Along the eastbound and westbound sides of I-26 and I-526 and Remount Road interchanges to benefit the Highland Terrace and Liberty Park communities.
- Along the westbound side of I-526 between the Rivers Avenue and I-26 interchanges to benefit the residents of the Liberty Park community.
- **Along the eastbound side of I-526 from the I-26 interchange to east of the CSX railroad tracks to benefit the Russelldale and Ferndale communities.**
- **Along the eastbound side of I-526 and the eastbound exit ramp at the Montague Interchange to benefit the west side of the Camps community.**



UPDATE

Mitigation Barriers (Walls)

Mitigation barriers are walls constructed along a highway to protect sensitive land-uses, such as homes, from impacts associated with transportation projects.



Potential Mitigation Barrier Materials



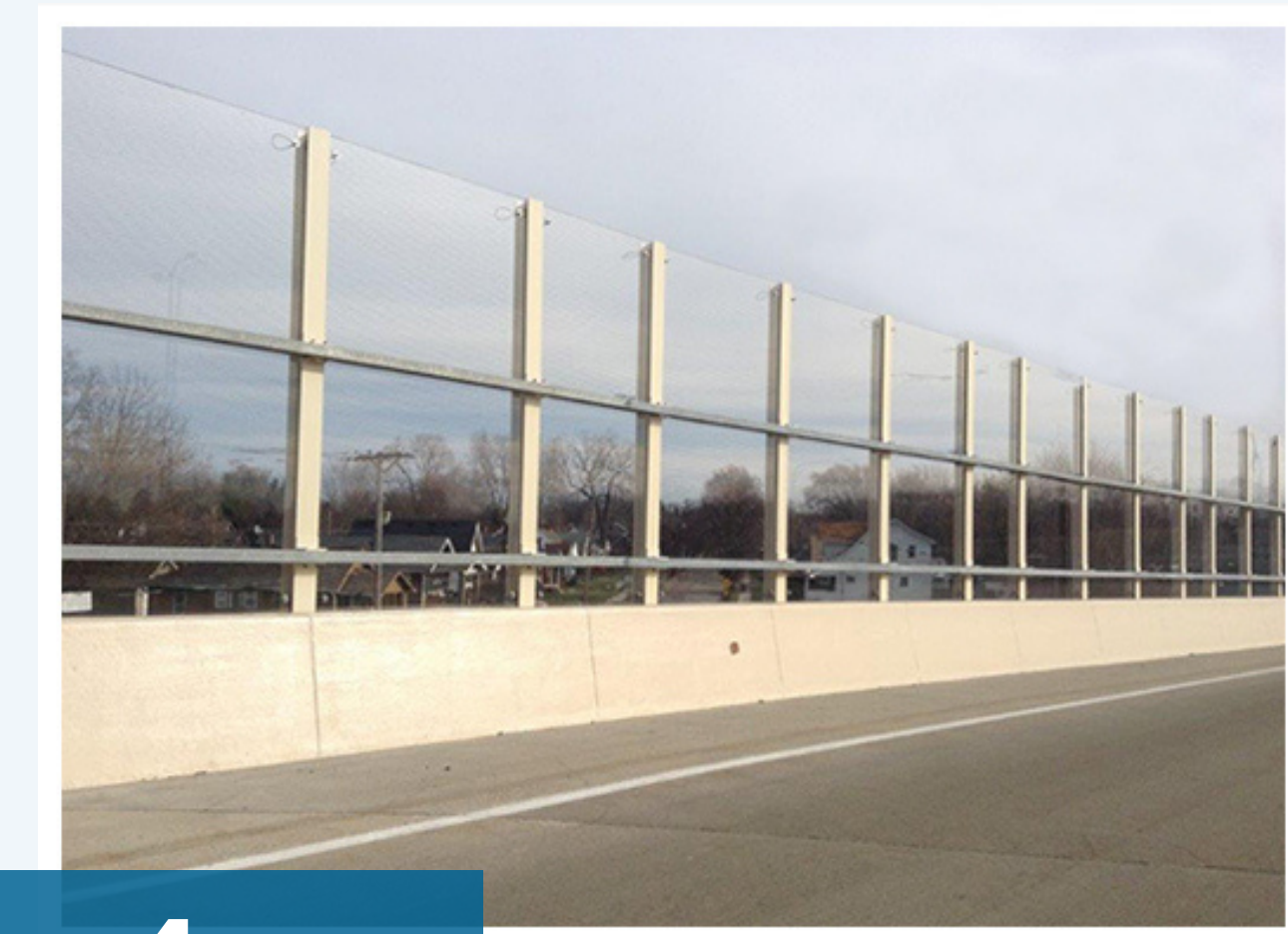
Option 1:
Concrete



Option 2:
Aluminum



Option 3: Lightweight
Composite



Option 4:
Clear Acrylic

Please remember...

- We are still in the early stages of development and want your input!
- Technical or maintenance requirements may limit our ability to use some of these materials.
- If clear panels are adopted, they would be limited to areas where there is a natural view on the other side, like a river.

Mitigation Barriers: Liberty Park

2023-2038

View 1: Margaret Dr

**What might a proposed
Mitigation Barrier look like
in Liberty Park?**
Your input wanted!

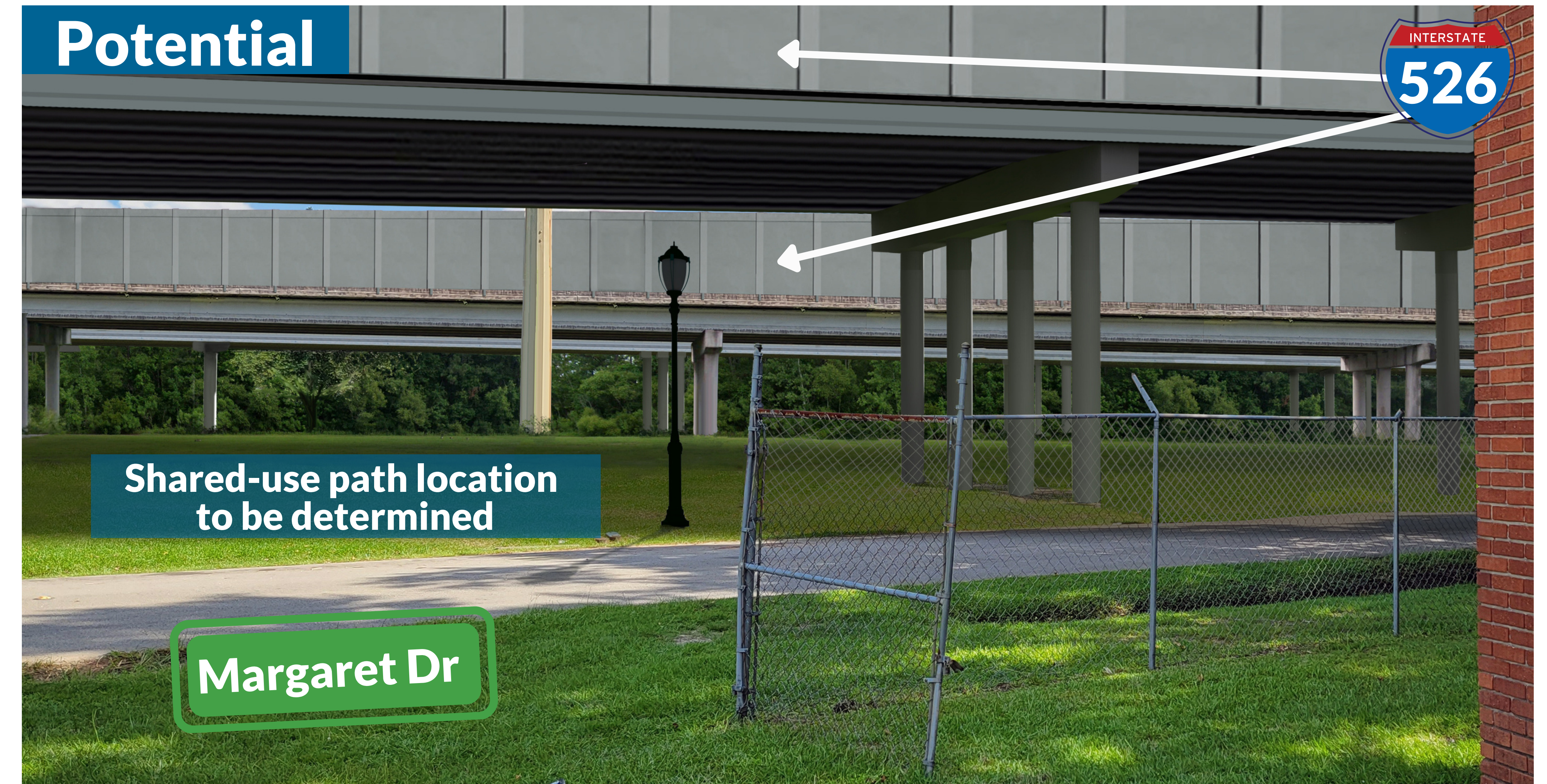
Mitigation barriers are walls constructed along a highway to protect sensitive land-uses, such as homes, from impacts associated with transportation projects.



Existing



Potential



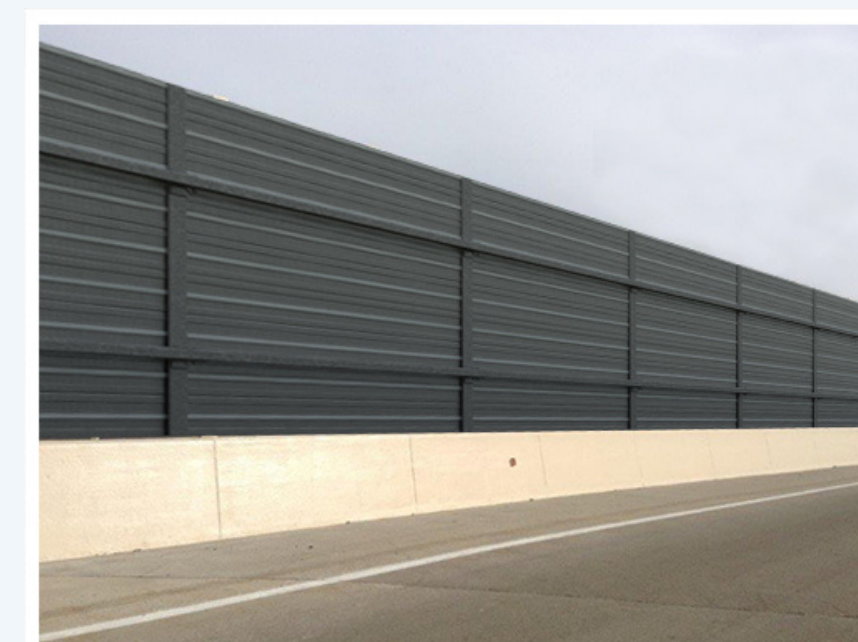
Shared-use path location
to be determined

**Potential building
materials that may be
considered:**

Option 1



Option 2



Option 3



Please remember....

- Technical or maintenance requirements may limit our ability to use some of these materials.
- If clear panels are adopted, they would be limited to areas where there is a natural view on the other side, like a river.

Mitigation Barriers: Russelldale

2023-2038

View 2: Russelldale Ave

**What might a proposed
Mitigation Barrier look like
in Russelldale?**
Your input wanted!

Mitigation barriers are walls constructed along a highway to protect sensitive land-uses, such as homes, from impacts associated with transportation projects.



Existing



Potential

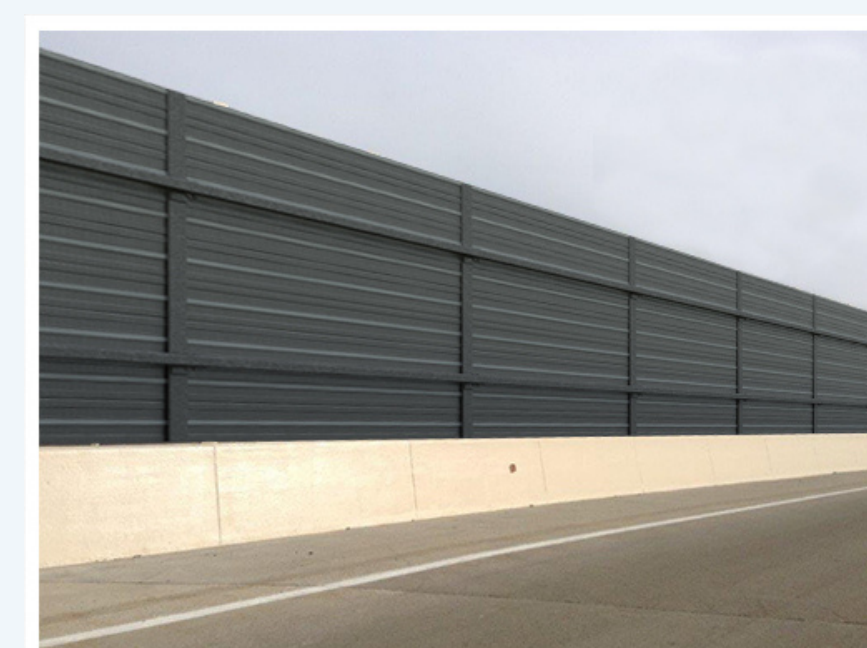


**Potential building
materials that may be
considered:**

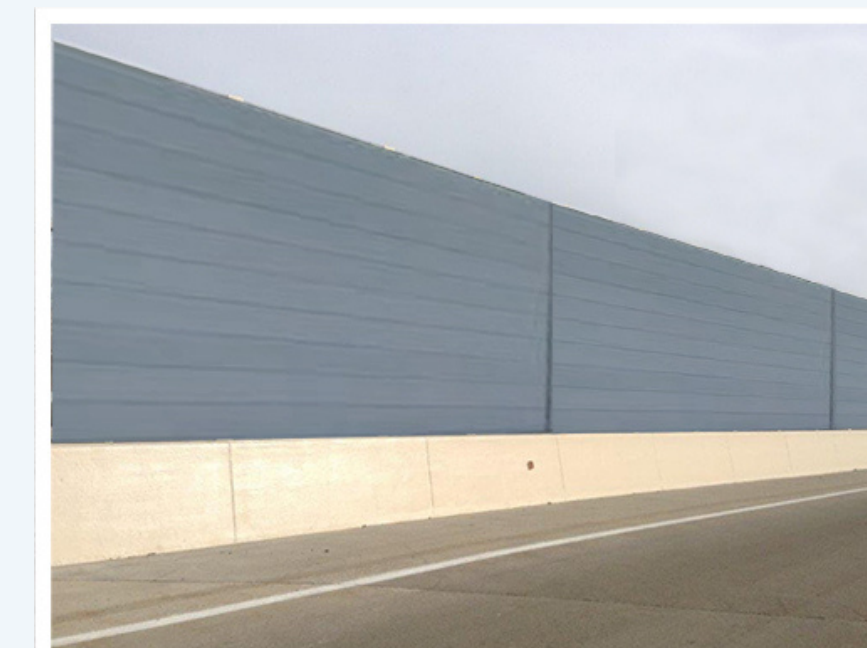
Option 1



Option 2



Option 3



Please remember....

- Technical or maintenance requirements may limit our ability to use some of these materials.
- If clear panels are adopted, they would be limited to areas where there is a natural view on the other side, like a river.

NEW

Community Air Quality Monitoring Program

Air quality sensors will be installed to detect fine particles of pollutants (Particulate Matter 2.5) in Ferndale, Highland Terrace, Liberty Park and Russelldale. The sensors will provide real-time data online to these communities during construction, and SCDOT will develop a response plan for elevated levels.



What is Air Quality?



Air quality measures how clean or polluted the air is. Particulate Matter 2.5 is a type of air pollutant that refers to tiny particles or droplets made up of a mixture of chemicals. One source of Particulate Matter 2.5 is dust from construction.

And Why does it Matter?

Polluted air can be bad for human health and the health of the environment. Exposure to fine particles can cause eye, nose, throat and lung irritation, coughing, sneezing, runny nose and shortness of breath.



UPDATE

Community Center Facilities and Amenities

SCDOT will partner with the City of North Charleston to fund the construction of **one replacement community center, two pocket parks**, and associated infrastructure that could include:

- Flexible space/classrooms
- Basketball courts
- Wi-Fi/internet access
- Audio/visual equipment
- **Emergency generators and refrigerators (NEW)**
- **Solar Power (NEW)**
- Well-lit facility access
- Shared-use path
- Multiple pedestrian access points
- Crosswalks/traffic calming
- Walkways, user-friendly common spaces
- Directional signs
- Community garden
- Educational wetland
- Covered shelters/grills
- Mural in the community center
- Parking for the center near trail entrances



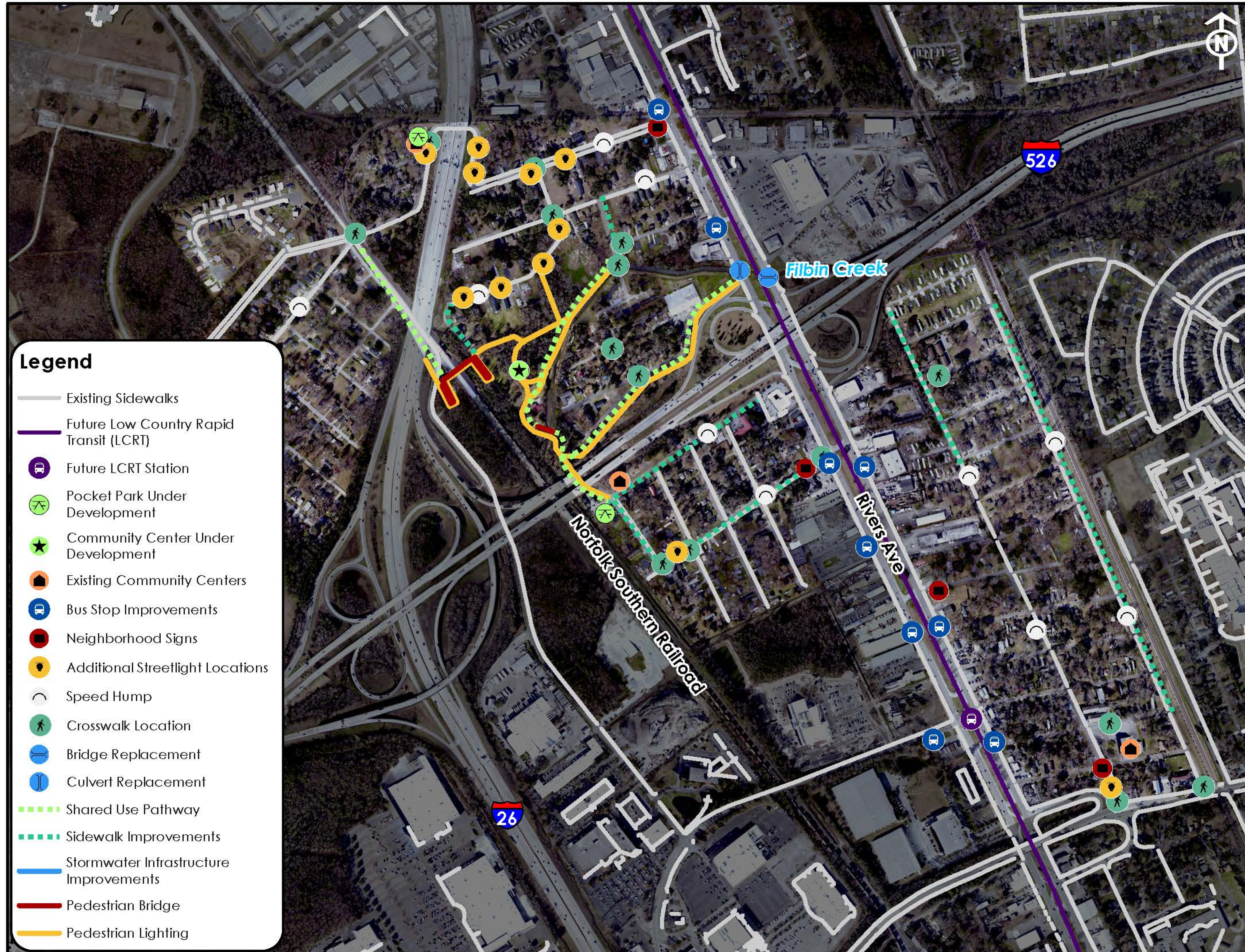
Community Programs and Activities

SCDOT will partner with the City of North Charleston to develop:

- Senior/youth-focused programs and activities
- Yearly calendar of community center events focusing on fostering community cohesion
- Programming that provides access to educational and financial resources for community and self-advocacy
- Inclusion of a community garden to serve as an educational program and effort to mitigate a known food desert
- Maintenance of stormwater detention for educational purposes during summer programs



Community Infrastructure Enhancements 2023-2038



The Community Infrastructure Enhancement Plan (CIEP) is focused on providing infrastructure improvements within the Ferndale, Highland Terrace, Liberty Park and Russelldale neighborhoods that would be implemented as part of the project.

Summary of Potential Improvements

Recommendations are based on input received from the CIEP survey, community residents, and the project's Community Advisory Council.

Improvements include:

- Bicycle/Pedestrian Connectivity and Safety
- Bus Shelter Amenities
- Traffic Calming Measures
- Stormwater Infrastructure Improvements
- Aesthetics and Landscaping Improvements
- Lighting Improvements

Preliminary & subject to change based on coordination with entities such as the Norfolk Southern Railroad & the City of North Charleston



As of August 2022