



Make an impression with a state of the art cinematic experience at

PALACE CINEMAS NSW

PALACE CENTRAL, NORTON STREET, VERONA, THE CHAUVEL

Our stylish cinemas are the perfect venue for your next event.

Whether you wish to pamper clients, socialise with colleagues and friends, host a corporate presentation with a difference, or fundraise for a worthy cause, Palace Cinemas can save you both time and money when you book your event with us.

Let our team help you find the right film to suit your audience and guide you to create your next memorable occasion.

With access to:

- 27 beautiful theatres across our four Sydney locations, suitable for anywhere between 14 to 350 guests, including three luxury Platinum cinemas.
- A broad selection of arthouse, foreign-language and mainstream films
- Flexible catering packages, tailored to suit your needs
- State of the art Digital Cinema Package (DCP) screen presentation facilities
- Technical staff and AV support including microphones, lecterns, HDMI capability for laptop presentations, and Dolby Digital surround sound
- Stunning function spaces for pre- or post-film networking
- Display of corporate signage including pull up banners, brochures, posters, etc.
- Registration space to welcome guests



Contact us:

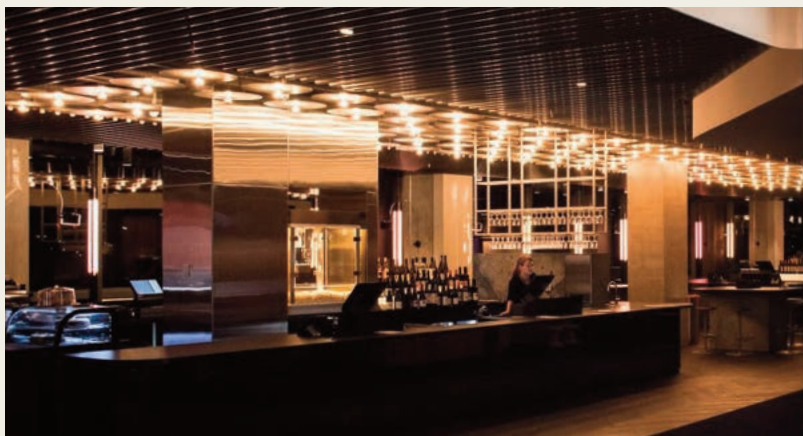
Naomi Janes
Group Functions & Events Coordinator
P: (02) 9290 9103
E: nswevents@palace.net.au

Contents:

FAQS.....	2
Cinema Locations and pricing.....	3
Function catering.....	4/5
Technical requirements.....	6

FAQ

FREQUENTLY ASKED QUESTIONS



TYPES OF BOOKINGS

Group Booking

Group bookings in shared public sessions are available for groups of 20+ people, at a discounted rate of \$13.00 per ticket. These group booking rates do not apply on public holidays, or for film festivals and special events. Group bookings are offered 7 days a week, subject to availability, with films programmed to start between:

10:00am – 10:30am

12:00pm – 12:30pm

2:00pm – 2:30pm

4:00pm – 4:30pm

6:00pm – 6:30pm

9:00pm – 9:30pm

Please note, these start times are approximate. Once the programming schedule is completed for the week of your event, exact session times will be confirmed.

Payment

Payment can be made directly to the cinema by cash, credit card or direct deposit, and is due three working days prior to your booking. Confirmation of the final guest number is also required on this date.



Exclusive Hire

Hire an entire auditorium on your chosen date and time, for a private screening of an in-season film or vintage classic.

An Upcoming Film List is available upon request to assist with your selection of an in-season film. Otherwise, please let us know if you are interested in screening an out-of-season film. Films outside of current release are subject to approval by the distributor and may incur a film hire fee.

Pricing and Payment

Please refer to the cinema pricing pages below. Exclusive hires are calculated by cinema capacity and booked in units of film length. Additional time can be negotiated, extra fees apply.

No deposit required. Preferred payment method via electronic funds transfer (EFT)/direct deposit.

Confirmation of cinema capacity and payment is due the Friday before programming is finalised. Banking details and due date will be listed on the invoice.

Cinema Hire

Full auditorium hires are available for a private screening of your own content or for occasions that don't require a film screening i.e. lecture/corporate presentation/panel discussion.

These are ideal for your corporate conference, product launch, or cast and crew screening.

Pricing and Payment

Please refer to the cinema pricing pages below. Cinema hires are calculated at cinema capacity and booked in units of 120-150 minutes. Additional time can be negotiated, extra fees apply.

No deposit required. Preferred payment method via electronic funds transfer (EFT)/direct deposit.

Confirmation of cinema capacity and payment is due the Friday before programming is finalised. Banking details and due date will be listed on the invoice.

Children's Birthday Party

Children's Birthday Bookings info sheet available on request.

VENUE HIRE

CINEMA LOCATIONS AND PRICING

Our cinemas feature fully licensed bars and auditoriums providing state of the art projection and on screen equipment.

Standard hire rates include the auditorium of your selection and the usage, whether screening a film or hosting a corporate presentation.

PRIVATE HIRE RATES

Palace Central (Mon-Fri only)

Level 3, Central Park Mall
28 Broadway CHIPPENDALE 2008

CINEMA	CAPACITY	RATE
1	83 seats	\$1,079
1 (3D)	83 seats	\$1,162
3	76 seats	\$988
4	58 seats	\$754/\$928*
5	39 seats	\$507/\$624*
6	65 seats	\$845
7	42 seats	\$546/\$672*
7 (3D)	42 seats	\$588/\$714*
8	35 seats	\$455/\$560*
9	38 seats	\$455/\$560*
10**	38 seats	\$494/\$608*
11	50 seats	\$650/\$800*

*For events with pre-paid bar or catering purchases of \$300 or more the lower cinema hire price applies. For all other events the higher price applies.

**All cinemas are wheelchair accessible (excluding C10).

Public Transport: 5 min walk from Central Railway Station and Railway Square bus interchange.

Parking: Parking available at Novotel Wilson Parking: 169-179 Thomas St, Haymarket. 6 min walk from Central Park Mall.

Palace Central Platinum

Palace Platinum features boutique cinemas with luxury reclining leather seats (complete with individual tables and footrests) and personalised in-cinema wait service. Palace customers can choose from the carefully curated menu of small plates and substantial meals that offers cuisine direct from the area's finest restaurants, alongside a selection of premium wines and craft beers.

CINEMA	CAPACITY	MON-WED (OFF-PEAK)	THU-SUN (PEAK)
1	18 seats	\$414	\$720
2	14 seats	\$322	\$560
3	22 seats	\$506	\$880

All cinemas are wheelchair accessible

Palace Norton Street (Mon-Fri only)

99 Norton St LEICHHARDT 2040

CINEMA	CAPACITY	RATE
1	144 seats	\$1,872
2	188 seats	\$2,444
3	188 seats	\$2,444
3 (3D)	188 seats	\$2,632
4	180 seats	\$2,340
5	46 seats	\$598/\$736
6	51 seats	\$633/\$816
7	57 seats	\$741/\$912
8	95 seats	\$1,235

*For events with pre-paid bar or catering purchases of \$300 or more the lower cinema hire price applies. For all other events the higher price applies.

**All cinemas are wheelchair accessible.

Public Transport: Sydney buses regularly run along Norton St, Marion St and Parramatta Rd

Parking: Paid parking under Norton St or at Norton St Plaza. Please refer to website for further details.

Palace Verona (Mon-Fri only)

17 Oxford St PADDINGTON 2021

CINEMA	CAPACITY	RATE
1	65 seats	\$845
2	96 seats	\$1,248
3	118 seats	\$1,534
4	73 seats	\$949

All cinemas are wheelchair accessible.

Public Transport: Sydney buses regularly run along Oxford St.

The Chauvel

(Cnr Oatley Rd) PADDINGTON 20211

CINEMA	CAPACITY	MON-FRI 10AM-6PM	MON-THU 6PM-12AM	FRI 6PM-12AM SAT/SUN
1	350 seats	\$1,050	\$1,750	\$2,980
2	75 seats	\$600	\$750	\$900

All cinemas are wheelchair accessible.

Public Transport: Sydney buses regularly run along Oxford St.

SHORT FILM CINEMA HIRES PALACE VERONA & THE CHAUVEL

30min hires from 6:00pm-6:30pm
Mon-Thur are a flat \$220 regardless of auditorium.

60min hires from 5:30pm-6:30pm
Mon-Thur are a flat \$330 regardless of auditorium.

EVENT CATERING

SNACKS, PLATTERS AND CANAPÉS

STAFF SERVICE

During your event, our trained and RSA-certified function staff can cordon off your space in the foyer, prepare and arrange platters and individual food items, set up a private bar or tables, serve beverages, deliver tray service for canapes, and usher guests into the cinema when ready. For 20-100 guests: \$80.00. For 100-150 guests: \$150.00. For 150+ guests: \$220.00.

PALACE COMBOS

Classic Sparkling Combo	\$15.00
Small popcorn, Connoisseur gourmet ice cream stick, bottled water and a glass of sparkling wine	
Classic Beer Combo	\$15.00
Small popcorn, Connoisseur gourmet ice cream stick, bottled water and a house beer	
Traditional Combo	\$10.00
Small popcorn, Connoisseur gourmet ice cream stick and bottled soft drink	
Cinema Combo	\$7.00
Small popcorn and Connoisseur gourmet ice cream stick	
Snack Combo	\$6.00
Small popcorn and bottled soft drink	

PLATTERS (Palace Central, Verona and Norton St only)

Palace Central

Cheese Board (serves 2-3).....	\$28.00
Charcuterie Board (serves 2-3).....	\$28.00
Vegetarian Platter (serves 2-3).....	\$28.00

*Vegan platter available on request

A discounted rate of \$25.00 per platter will be applied if you order a minimum of 5 platters.

Palace Norton Street

Cheese Platter (serves 2-3).....	\$26.50
Antipasto Platter (serves 2-3).....	\$32.50

A discounted rate of \$21.20 for cheese platters and \$26.50 for antipasto platters will be applied if you order a minimum of 5 platters

Palace Verona

Cheese Platter (serves 2-3).....	\$26.50
----------------------------------	---------

A discounted rate of \$21.20 per platter will be applied if you order a minimum of 5 platters.

CANAPÉS

Canapé menu available upon request.
Hot and cold options available.



INDIVIDUAL ITEMS

Connoisseur gourmet ice cream stick.....	\$3.50
Handmade Vanilla Choctop*.....	\$4.50
Small Popcorn.....	\$3.50
Bottled Water (600mL).....	\$3.50
Bottled Soft Drink (300mL).....	\$3.50
Lolly Bag.....	\$3.50

*Available for groups of up to 50 max.

SELF-CATERING

Palace Cinemas offer you the option to self-cater. Please note: No items that are available to purchase from the Palace Bar are to be sold or given away.

This includes lollies, chocolates, popcorn, packet chips, ice creams, cheese platters, and ALL drinks including alcohol. Hot food is not permitted. No take-away or food from third party restaurants is permitted.

Self-catering Fees:

Central, Verona, Norton St.....	\$4.00 per seat
Chauvel.....	\$2.50 per seat
Birthday Cake.....	\$50.00 flat rate

EVENT CATERING

BEVERAGES

Enjoy the best in locally and internationally sourced wines and beers at our fully licensed cinemas.

Beverages can be served in your function area and enjoyed inside the cinema. Select a range of beverages to offer your guests and have our staff manage your private drink service. For bar tabs, drinks are charged on consumption and paid on the night of your booking. All wines are charged by the bottle. A standard 750mL bottle of wine holds 5 serves.

All Palace staff members are RSA qualified. Groups offering drinks on consumption require a function staff member for service. Fees apply.

WINE

Premium

Clover Hill Tasmanian Cuvee.....	\$45.00
Fat Bastard Chardonnay.....	\$45.00

Sparkling

La Gioiosa 'il Fiore' Prosecco.....	\$30.00
-------------------------------------	---------

White

Versions Pinot Gris.....	\$30.00
Tar & Roses Riesling.....	\$36.00
Pikorua Sauvignon Blanc.....	\$34.00

Red

Versions Shiraz.....	\$30.00
Cruel Mistress Pinot Noir.....	\$35.00

BEER & CIDER

Peroni.....	\$6.50
Peroni Leggera.....	\$5.00
4 Pines Pale Ale.....	\$7.50
Young Henry's Newtowner.....	\$7.00
Young Henry's Cloudy Cider.....	\$7.00



NON-ALCOHOLIC

Bottled juice (375mL).....	\$3.50ea
Bottled soft drink (300mL).....	\$3.50ea
Bottled water (600mL).....	\$3.50ea
Barista-made hot beverages.....	\$3.00ea
(Coffee/Tea/Hot Chocolate)	
Self-serve hot water urn.....	\$1.50pp
(Tea station)	

Complimentary jugs of water available on request.

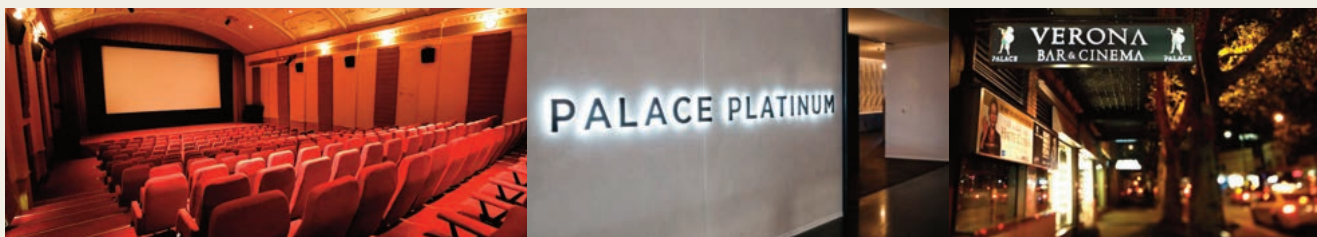
*The prices listed here are discounted rates.

Bar prices will differ. Selection is subject to availability.



TECHNICAL SPECS

REQUIREMENTS AND COSTS



TECHNICAL SPECS (Film content)

- All content must be delivered to the site on a hard drive (formatted in EXT2 or NTFS) at least one week prior to your screening.
- Content must be in DCP (Digital Cinema Package) format
- Picture rate must be 24 or 25 fps
- Aspect ratio: scope format is 1080p (2048 x 1080), widescreen aspect ratio is 1998 x 1080 [1:85:1]
- Please give your file an easily identifiable name that includes the film title

Converting your content to DCP:

All digital material must be converted to DCP by a reputable commercial provider. We recommend getting a quote as early as possible from:

- FEBN DCP Services: contact Felix Hubble at felix.hubble@febn.com.au

PRESENTATIONS

HDMI is available in some auditoria for screening PowerPoint presentations via a laptop. PowerPoint presentations must be supplied on the client's own laptop with HDMI connectivity. Video footage in PowerPoint presentations must be embedded.

Please bring all cables and the power supply for the laptop; if you are using a Mac laptop you will need to supply your own VGA adaptor.

A technical rehearsal is mandatory when screening a PowerPoint presentation and optional when screening your own film. These are scheduled between 8:00am-10:00am on weekdays, at least four working days prior your event. The presentation being tested must be the finished product that will be used at your event.

Holding Slides

A holding slide (still image) can be displayed on screen during intro speeches, Q&As, panel discussions, etc. These must be delivered to the venue in DCP format on a USB at least three days prior the event. DCP conversion from a JPG (size 2048 x 1080) can be arranged through your GFE coordinator. Please enquire for more details.

TECHNICAL COSTS

Technical Rehearsal.....	\$85.00 per hour
Technical Assistant.....	\$85.00 per hour
Holding Slide Conversion.....	\$50.00 per slide
Q&A/Panel Set Up (3+ mics).....	\$85.00

PowerPoint Presentation:

0-15 mins.....	\$85.00
15-30 mins.....	\$150.00
30-60 mins.....	\$250.00
60+ mins.....	\$300.00

IMPORTANT INFORMATION

Please take a moment to read

Signed Terms and Conditions must be returned before an event will be confirmed.

Palace Cinemas retains the right to cancel bookings under whatever circumstances deemed reasonable. In the case that an event must be cancelled in its entirety, Palace Cinemas will not charge the client for the event.

For cinema hire, the allocated auditorium is usually available for 120-150 minutes. This can be extended by written agreement and additional charges may apply.

The allocated auditorium must be vacated at the end of the programmed session time to allow for the next session to take place. At the conclusion of the session, Palace Cinemas requires time to clean the auditorium and prepare for the following session. Should the time in the allocated auditorium exceed the agreed finishing time, Palace Cinemas reserved the right to impose an additional cinema hire charge in compensation.

Guest numbers must not exceed the allocated auditorium seating capacity and all paths, steps and thoroughfares must always be kept clear. No external seating is permitted.

If you have arranged to pay for drinks on consumption, a credit card must be left with the cinema manager before your function commences, and payment will be finalised at the conclusion of your function.

Hosts may charge guests for admission at their own discretion or may invite guests free of charge. Under either agreement, the host is responsible for promoting the event and managing the guest list. Palace Cinemas are able to provide a registration table for this purpose.