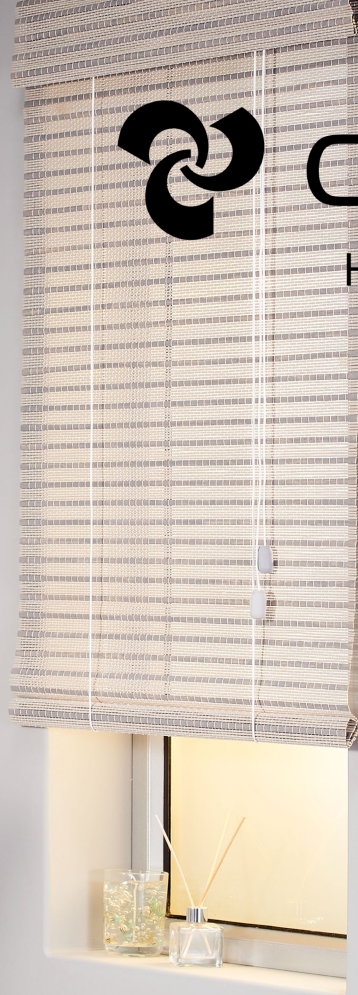




COBRA

HERE FOR YOU

COBRA DIGITAL CATALOGUE



2021

PART OF LIXIL



ABOUT US

For over half of a century, Cobra has provided sanitaryware products that make your everyday moments just that little bit better. Its wide range of bathroom and kitchen fittings are beautifully designed, flawlessly functional and made according to the highest international standards.

The Cobra offering has naturally evolved to become more lifestyle oriented. Just as bathrooms and kitchens of the past consistently featured Cobra products, so will the future-forward living spaces of tomorrow.

Whether you're a homeowner, an architect, an interior designer or a plumber, Cobra has the perfect product for every project.

Cobra, Here For You.



PRODUCT CARE & MAINTENANCE

Taps and mixers

To maintain the lustre of chrome plated surfaces simply wipe occasionally with a soft damp cloth using a mild dishwashing detergent or soap solution. Rinse, dry and buff with a soft cloth.

Warning!

Many household and industrial cleaners contain abrasives and or harsh chemical compounds and acids. Do not use these cleaners as they may irreparably discolour, dissolve or scuff the chrome plate finish. Avoid using abrasive cloths or scouring pads.

Basins

Clean the basin with soap and water, as and when required. Should stubborn dirt prevail, a slightly abrasive cleaning material such as "Handy Andy" may be used.

Toilets

Clean the ceramic pan with soap and water, as and when required. Should stubborn dirt prevail, a slightly abrasive cleaning material such as "Handy Andy" may be used. The same applies to a polypropylene or thermoset toilet seat. Should a wooden toilet seat be used, a damp cloth must be used to clean the seat. No abrasive material must ever be used. The inside of the cistern should be kept free of dirt, as it could hamper the performance of the flush valve and the inlet valve. Should either of these valves malfunction, ensure that any dirt has been removed from all of the seals.

Urinals

Clean the urinal with soap and water, as and when required. Should stubborn dirt prevail, a slightly abrasive cleaning material such as "Handy Andy" may be used.



PRODUCT CARE & MAINTENANCE

Maintenance

The frequency and extent of maintenance required for this product varies according to prevailing site and operational conditions. No regular maintenance is required and spare parts are available for key components.

LIXIL Africa Service call centre contact: 0861 21 21 21
LIXIL Africa Service E-Mail: service.lixil@lixil.com
Cobra web site: cobra.lixil.co.za

PRODUCT WARRANTY 01

LIXIL Africa warrants that their products will be clear of material and manufacturing defects. Appraisal of the above will be done against ruling manufacturing specifications and standards at the date of manufacture. Defective product will be repaired or exchanged at LIXIL Africa's sole discretion. LIXIL Africa shall not be liable for indirect or consequential loss or damage.

THE WARRANTY WILL BE VOIDED UNDER THE FOLLOWING CONDITIONS:

- Products used with water pH falling outside of the guidelines set by the Department of Water Affairs and Forestry or similar body
- Products not installed by a registered or accredited installer
- Products fitted with unbalanced water pressure
- Products fitted without an inline strainer
- Products used with or included in installations where water temperatures are outside of the temperature range stipulated for that product, or as laid down in the Standards for water supply and drainage (SANS 10252 & 10254) or an equivalent international standard
- Products not installed according to LIXIL Africa's or its suppliers' installation instructions or according to valid Water Regulations and general good plumbing practice
- Products which have failed as a result of dirt or debris in pipe-work which has not been flushed prior to the use of terminal fittings
- Where a defect is attributable to the incorrect use or incorrect handling of the product
- Where routine maintenance has been neglected
- If spare parts other than the original spare parts are used during repairs or maintenance of the product;
- If damage was caused by transport by a third-party transporter
- If products are used or intended for display purposes
- If consumables (e.g. filters, filter cartridges, aerators or batteries) or material subject to wear and tear (such as seals or hoses) are affected
- If product damage is as a result of chemicals and cleaning agents, lime-scale build-up, aggressive environmental influences, or disruptions resulting in damage which are caused by freezing or lime-scale build-up
- If the defect is caused by specific environmental circumstances (e.g. excess or negative pressure in the line, excess voltage or under voltage on the line)
- If the defect is attributable to willful or negligent damage to the product by the user or a third party
- Any product installed in such a manner that it is not accessible to do maintenance will not be covered under our warranty

PRODUCT WARRANTY 02

LIXIL Africa reserves the right to review any specific case in order to assess the validity of this warranty. LIXIL Africa may charge a discretionary service fee as may be reasonably determined by itself from time to time, when called out to inspect products which are not LIXIL Africa products or where there is an illegitimate claim.

THE WARRANTY IS VALID FOR:

- 20 years taps & mixers, wastes, capillary and compression fittings, this excluding the "economy" single lever mixer ranges, Zambezi, Nile and Amazon
- 5 years in respect of Zambezi, Nile and Amazon single lever mixer ranges
- 5 years in respect of shower heads, shower rails, wall outlets and shower arms
- 2 years electronic mixers, components and valves within the electronic range
- 2 years valves (isolating, geyser and toilet)
- 10 years Cobra-Safe multi-layer pipe system (must be used with Cobra compression fittings and Cobra-Safe inserts or warranty shall be void)
- 10 years on all baths, shower trays and vanities, except Tanya, Widestar and Scarlett baths
- 5 years on Tanya, Widestar and Scarlett baths
- 20 years on baths with Amazonite coating
- 1 year on spa bath fittings and on all bath panels
- 10 years on all ceramic sanitaryware
- 6 months on all toilet seats supplied
- 2 years on all other valves not covered elsewhere in our warranty
- 15 years on ceramic disc mixer cartridges, this excluding cartridges used in the "economy" single lever mixer ranges
- 2 years in respect of ceramic disc mixer cartridges used in the Zambezi, Nile and Amazon single lever mixer ranges
- 10 years in respect of GROHE concealed cisterns
- 5 years in respect of Cobra concealed cisterns

MISCELLANEOUS:

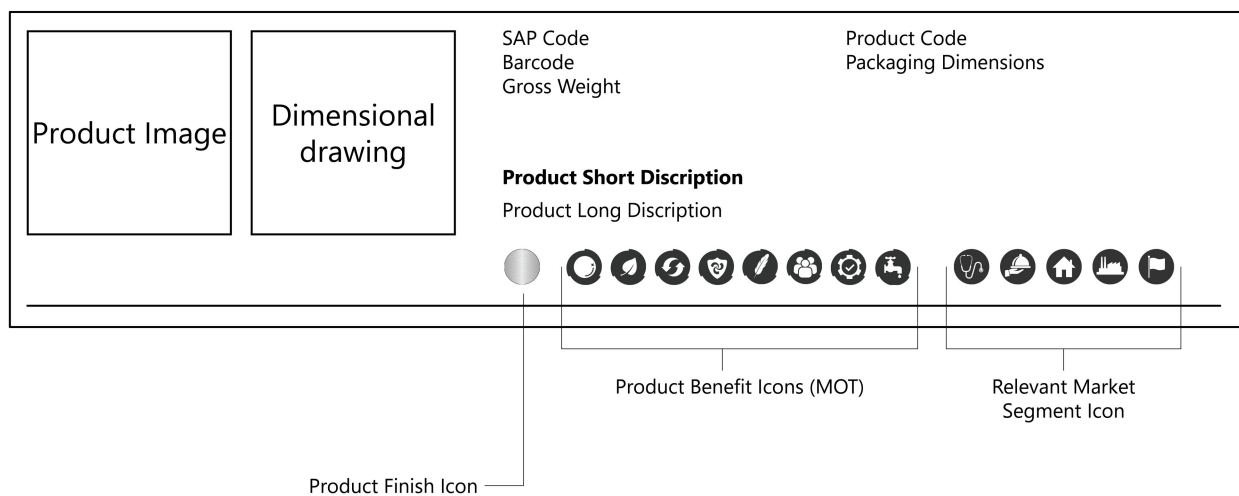
This warranty shall apply in the above-mentioned scope and subject to the above-mentioned prerequisites. Proof of purchase will be required.

This LIXIL Africa warranty is carried by LIXIL Africa. Please contact our Service Department on 0861 21 21 21 for warranty enquiries or further warranty information.



GLOSSARY + GUIDELINE TABLE

HOW TO READ THIS PRODUCT CATALOGUE



GLOSSARY + GUIDELINE TABLE

PRODUCT FINISH



The majority of our Cobra showroom products are finished with our Cobra PureShine chrome finish. SANS requires a chrome plate thickness of 0.3 microns (μm) to reduce wear on the product. Cobra chrome plating exceeds this with an average thickness of $0.44\mu\text{m}$, while the electroplated nickel substrate on our products exceeds the statutory $12\mu\text{m}$ with an average of $13.75\mu\text{m}$.



Ultimately, users can be assured that Cobra chrome plated products offer superior wear resistance. The icons shown alongside indicate the colour of the corresponding product in the catalogue section of this book.

PRODUCT FEATURES & BENEFITS

Cobra products are produced to offer maximum added value to customers. The various features and benefits of our product portfolio are detailed below.



PureShine

Durable chrome surfaces protect the products from scratches, are resistant to dirt and easy to maintain.



EcoMind

Save precious resources with water-saving technology.

Flow restrictors supplied with Cobra taps and mixers can be easily serviced by home owners. The restrictors are pressure compensating, meaning the stipulated flow will not be exceeded, regardless of inlet pressure.



EasySwitch

For a fresh look, change out the head of your tap without changing the body.

The handle assembly can be removed from Cobra screw down type taps. Depending on the type of headpart used in the tap ($\frac{1}{2}$ " light pattern, $\frac{1}{2}$ " heavy pattern or $\frac{3}{4}$ "), various designs of Cobra handle assemblies can be used to replace the old design.



Dezincification resistant brass (DR/DZR brass)

Dezincification relates to the corrosion of brass. The minimisation of this is a critical aspect of the quality (fitness for purpose) of plumbing fittings that come into contact with water. The risk and rate of dezincification increases with water hardness and the acidity or alkalinity of water (away from a PH of 7).

Dezincification-resistant brass, or DZR/DR brass, is brass that is characterised by exceptional resistance to this type of corrosion. The resistance is achieved by adherence to exacting specifications for chemical composition and careful process controls. All DZR brass must pass an ISO 6509 dezincification resistance laboratory test.

In South Africa, the use of DZR brass for components of brass plumber's fittings come into contact with water is national law. Building inspectors are being trained to demand the removal of plumber's brassware that does not conform to statutory law.



FeatherTouch

The lightest of touches is required for effortless opening and closing of the single lever mixer.



TeamAssist

Trained and dedicated service teams are in place to provide support pre and post installation.



Cobra Genuine

Genuine spare parts are readily available.



Low Water Pressure

Suitable for use in environments with low water pressure.

GLOSSARY + GUIDELINE TABLE

PRODUCT MARKET SEGMENTS:

Cobra products are produced to satisfy the needs of a variety of market segments or project types.

The various market segments serviced by the product portfolio are detailed below.



Health Facilities

This segment includes public and private hospitals, clinics, frail care facilities, veterinary hospitals and doctors' rooms.



Residential

This includes high, medium and entry-level housing.



Government

This segment includes the Department of Public Works and Department of Correctional Services; South African Police Services; Departments of Human Settlements, Health, Basic Education; Department of Higher Education and Training; Department of Defence; Department of Rural Development; South African Revenue Services; Department of Sport and Recreation and the Department of Transport.



Hospitality

This segment includes hotels, guest houses, guest lodges, inns, self-catering lodges and convention centres.



Commercial or Industrial

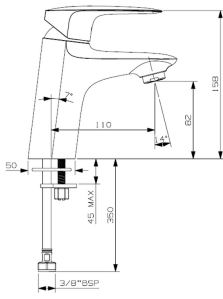
Included in this segment is office buildings, petrol garages, warehouses, factories, shopping centres, shopping malls, retail outlets, sports facilities and distribution centres.

Cobra Bathroom Single Lever Mixers.....	13
Recess.....	14
Zambezi.....	15
Snug.....	16
Pause.....	17
Nile.....	18
Den.....	19
Breathe.....	20
Amazon.....	21
Cobra Bathroom Taps & Mixers.....	22
Roma.....	23
Metsi.....	24
Ledimo.....	25
Carina.....	26
Stella.....	27
Star.....	29
Cobra Bathroom Accessories.....	31
Bath Fillers.....	32
Bath Spouts.....	33
Cobra Shower Collection.....	34
Shower Heads.....	35
Hand Showers.....	36
Shower Arms.....	37
Cobra Kitchen Mixers Single Lever.....	38
Kitchen Single Lever Mixers.....	39
Cobra Kitchen Taps & Mixers.....	41
Stella.....	42
Star.....	43
Roma.....	44
Metsi.....	44
Ledimo.....	44
Cobra Basins.....	45
Semi Pedistals.....	46
Wall Hung Basins.....	47
Pedistals.....	48
Cobra Urinals.....	49
Wall Hung Urinals.....	50
Cobra Toilets.....	51
Actuation Plates.....	52
Concealed Cisterns.....	52
Wall Hung Pans.....	53
Close Coupled Suites.....	55
Cobra Toilet Flush Valves.....	56
Cobratron.....	57
Flush Master.....	58
Flush Junior.....	60
Cobra Urinal Flush Valves.....	62
Flush Junior.....	63
Metering.....	63
Cobra.....	63
Cobra Toilet Flush Pipes.....	64
Flush Junior.....	65
Flush Master.....	66
Cobra Urinal Flush Pipes.....	67
Flush Junior.....	68
Cobra Float Valves.....	69
Low Pressure Float Valves.....	70
High Pressure Float Valves.....	70
Cobra Compression Fittings.....	71
Holderbats.....	72
Capnuts.....	73
Tees.....	75
Stop Ends.....	78
Rings.....	79
Reducers.....	81

Elbows.....	83
Couplers.....	87
Cobra Medical Range.....	92
Medical Pillar Taps.....	93
Medical Mixers.....	93
Medical Bib Taps.....	94
Cobra Electronic Fittings.....	95
Other Electronic Fittings.....	96
Electronic Spouts.....	96
Electronic Taps & Mixers.....	96
Cobra Public Taps & Mixers.....	97
Lockable Taps.....	98
Metering Taps & Mixers.....	98
Demand Taps & Mixers.....	99
Cobra Rough Brass Taps.....	100
Rough Brass Bib Taps.....	101
Rough Brass Stop Taps.....	103
Cobra Wastes, Traps & Overflows.....	105
Shower Wastes.....	106
Bath Wastes.....	106
Basin Wastes.....	107
Bottle Traps.....	108
Anti-theft Plugs.....	109
Sink Wastes.....	109
Cobra Geyser Valves.....	110
Vacuum Breakers.....	111
Temperature, Pressure & Safety Valves.....	113
Drain Cocks.....	115
Pressure Control Valves.....	116
Cobra Isolating Valves.....	119
Gate Valves.....	120
Check Valves.....	121
Ball Valves.....	123
Angle Valves.....	124



BATHROOM SINGLE LEVER MIXERS



FBL1D1Y5-0GT0383

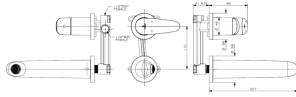
0 kg

(l)383mm x (w)168mm x (h)65mm

Standard basin mixer

Recess Single lever basin mixer. Flow restricted. 1/2 inch BSP female connection end.

Range: [Recess](#)



FBN1W2Y5-0GT0383

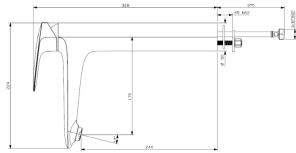
0 kg

(l)343mm x (w)163mm x (h)77mm

Wall mounted basin mixer

Recess Single lever with wall spout and sliding wall flange. 1/2 inch BSP female connection ends.

Range: [Recess](#)



FBR1D1Y5-0GT0383

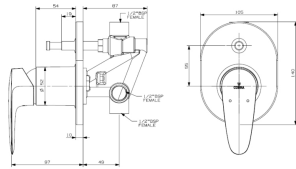
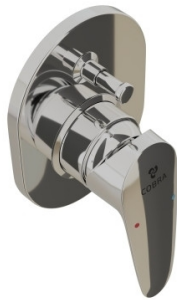
0 kg

(l)0mm x (w)0mm x (h)0mm

Raised basin mixer

Recess Single lever. Flow restricted. 1/2 inch BSP female connection ends.

Range: [Recess](#)



FBSCW2Y5-0GT0383

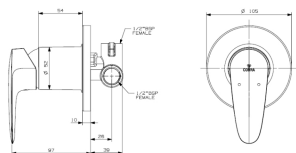
0 kg

(l)163mm x (w)196mm x (h)111mm

Concealed diverter mixer

Recess concealed diverter mixer - Single lever. 2 x 1/2 inch BSP female iron inlets and 2 x female iron outlet connection ends.

Range: [Recess](#)



FSWM1CY5-0GT0383

0 kg

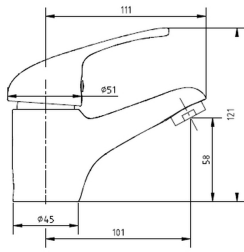
(l)163mm x (w)196mm x (h)111mm

Concealed shower mixer

Recess concealed shower mixer - Single lever. 2 x 1/2 inch BSP female iron inlets and 2 x female iron outlet connection ends.

Range: [Recess](#)





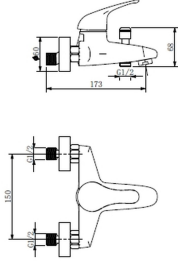
FBN1D1ZM-0GT0425

0 kg

Standard basin mixer

Zambezi pillar type single lever basin mixer flow rate restricted to 3.6 ltrs/ min G1/2 inch female connection ends chrome.

Range: [Zambezi](#)



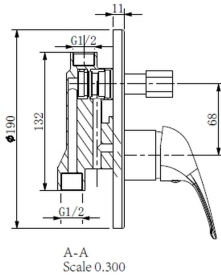
FB0EW2ZM-0GT0425

0 kg

Exposed bath mixer

Zambezi exposed bath mixer (no hand shower) single lever with diverter 2 x G1/2 inch female inlet, G1/2 inch male outlet chrome.

Range: [Zambezi](#)



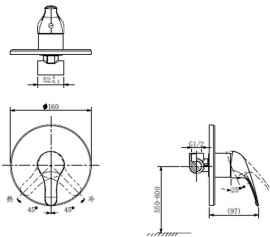
FBSCW2ZM-0GT0425

0 kg

Concealed diverter mixer

Zambezi concealed diverter mixer single lever with diverter 2 x G1/2 inch female inlet, 2 x G1/2 inch female outlet chrome.

Range: [Zambezi](#)



FSWM1CZM-0GT0425

0 kg

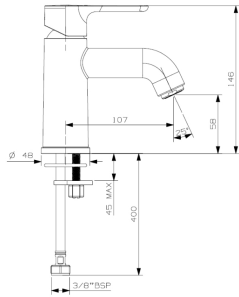
(l)180mm x (w)170mm x (h)80mm

Concealed shower mixer

Zambezi concealed shower or bath mixer single lever 2 x G1/2 inch female inlet, G1/2 inch female outlet chrome.

Range: [Zambezi](#)





FBN1D1Y1-0GT0383

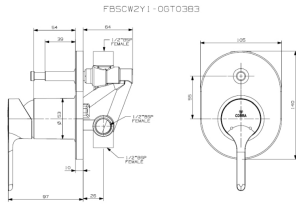
0 kg

(l)383mm x (w)168mm x (h)65mm

Standard basin mixer

Snug basin mixer, single lever, chrome.

Range: [Snug](#)



FBSCW2Y1-0GT0383

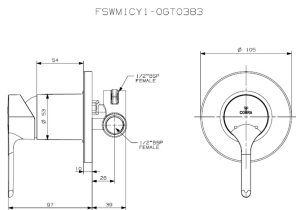
0 kg

(l)343mm x (w)163mm x (h)77mm

Concealed diverter mixer

Snug underwall diverter bath mixer, single lever chrome-plated. Includes: sliding wall flange, 2 u00d7 1/2 inch female inlets, and 1 u00d7 1/2 inch female shower outlet.

Range: [Snug](#)



FSWM1CY1-0GT0383

0 kg

(l)343mm x (w)163mm x (h)77mm

Concealed shower mixer

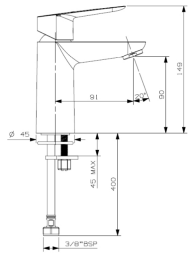
Snug underwall shower mixer, single lever chrome-plated. Includes: sliding wall flange, 2 u00d7 1/2 inch female inlets, 1 u00d7 1/2 inch female shower outlet and 1 u00d7 3/4 inch female bath outlet.

Range: [Snug](#)





FBN1D1Y2-0GT0383



FBN1D1Y2-0GT0383

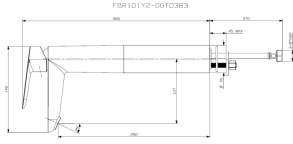
0 kg

(l)383mm x (w)168mm x (h)65mm

Standard basin mixer

Pause basin mixer, - one hole single lever, chrome.

Range: [Pause](#)



FBR1D1Y2-0GT0383

0 kg

(l)383mm x (w)168mm x (h)65mm

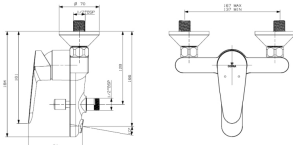
Raised basin mixer

Pause basin mixer, raised - one hole single lever, chrome.

Range: [Pause](#)



FBHEW2Y2-0GT0383



FBHEW2Y2-0GT0383

0 kg

(l)154mm x (w)194mm x (h)173mm

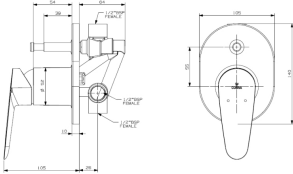
Exposed bath mixer

Pause exposed bath mixer without hand shower, wall-type, chrome.

Range: [Pause](#)



FBSCW2Y2-0GT0383



FBSCW2Y2-0GT0383

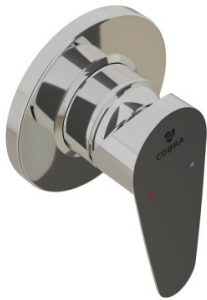
0 kg

(l)163mm x (w)196mm x (h)111mm

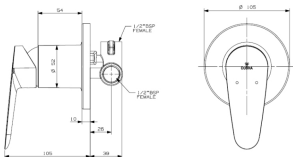
Concealed diverter mixer

Pause concealed diverter mixer chrome.

Range: [Pause](#)



FSWM1CY2-0GT0383



FSWM1CY2-0GT0383

0 kg

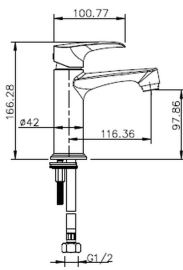
(l)163mm x (w)196mm x (h)111mm

Concealed shower mixer

Pause concealed shower mixer, chrome.

Range: [Pause](#)





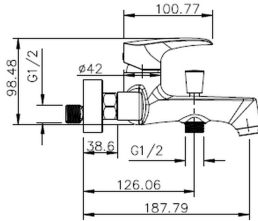
[FBN1D1NI-0GT0426](#)

0 kg

Standard basin mixer

Nile pillar type single lever basin mixer flow rate restricted to 6.0 ltrs/ min G1/2 inch female connection ends.

Range: [Nile](#)



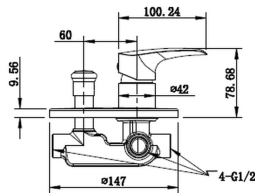
[FBHEW2NI-0GT0426](#)

0 kg

Exposed bath mixer

Nile exposed bath mixer (no hand shower) single lever with diverter 2 x G1/2 inch female inlet, G1/2 inch male outlet chrome.

Range: [Nile](#)



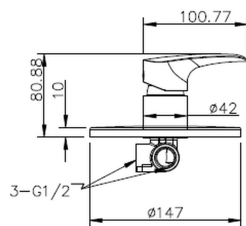
[FBSCW2NI-0GT0426](#)

0 kg

Concealed diverter mixer

Nile concealed diverter mixer single lever with diverter 2 x G1/2 inch female inlet, 2 x G1/2 inch female outlet chrome.

Range: [Nile](#)



[FSWM1CNI-0GT0426](#)

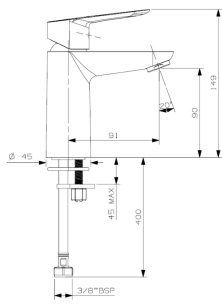
0 kg

Concealed shower mixer

Nile concealed shower or bath mixer single lever 2 x G1/2 inch female inlet, G1/2 inch female outlet chrome.

Range: [Nile](#)





FBN1D1Y3-0GT0383

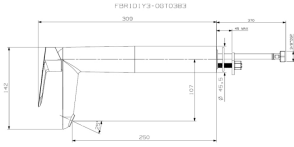
0 kg

(l)383mm x (w)168mm x (h)65mm

Standard basin mixer

Den basin mixer - one hole single lever, looped handle restrictor 5 L/min. G u00bdu201d FI x M10 MI x 400mm long flexible inlets, chrome plated.

Range: [Den](#)



FBR1D1Y3-0GT0383

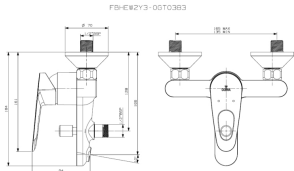
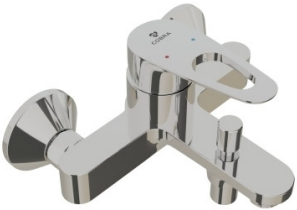
0 kg

(l)383mm x (w)168mm x (h)65mm

Raised basin mixer

Den basin mixer, raised - one hole single lever, looped handle, flow restrictor 5 L/min, G u00bdu201d FI x M10 MI x 400mm long flexible inlets, chrome plated.

Range: [Den](#)



FBHEW2Y3-0GT0383

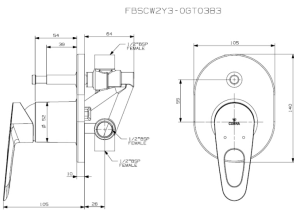
0 kg

(l)154mm x (w)194mm x (h)173mm

Exposed bath mixer

Den exposed bath mixer without hand shower, wall-type, chrome.

Range: [Den](#)



FBSCW2Y3-0GT0383

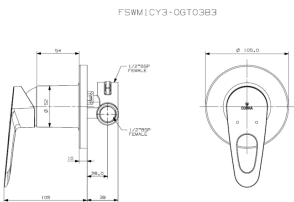
0 kg

(l)163mm x (w)196mm x (h)111mm

Concealed diverter mixer

Den bath/shower diverter mixer, undertile, single lever, cp wall plate, looped handle, 2 x G u00bdu201d FI Inlets, 1 x G u00bdu201d FI shower outlet and 1 x G 3/4u201d FI bath outlet, chrome plated.

Range: [Den](#)



FSWM1CY3-0GT0383

0 kg

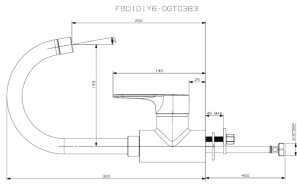
(l)163mm x (w)196mm x (h)111mm

Concealed shower mixer

Den bath or shower mixer, undertile, single lever with stepped plug for blanking off bath or shower outlet as required, cp wall plate, looped handle, 2 x G u00bdu201d F1 Inlet, 1 x G u00bdu201d shower outlet & D 1 x 3/4u201d, FI bath outlet, chrome plated.

Range: [Den](#)





FBD1D1Y6-0GT0383

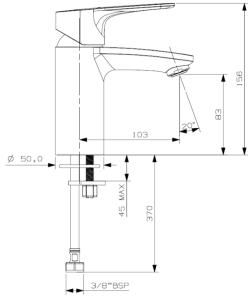
0 kg

(l)472mm x (w)307mm x (h)79mm

Raised basin mixer

Breathe basin mixer, single lever raised, chrome. Includes: 1/2 inch BSP female inlets.

Range: [Breathe](#)



FBL1D1Y6-0GT0383

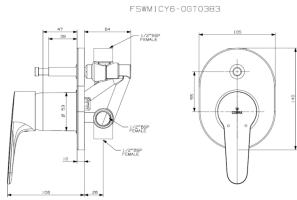
0 kg

(l)383mm x (w)168mm x (h)65mm

Standard basin mixer

Breathe basin mixer, single lever plain, chrome. Flow restricted. Includes: 1/2 inch BSP female inlets.

Range: [Breathe](#)



FBSCW2Y6-0GT0383

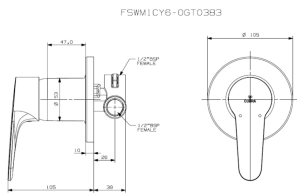
0 kg

(l)163mm x (w)196mm x (h)111mm

Concealed diverter mixer

Breathe bath/shower underwall diverter mixer, single lever, chrome. Includes: 2 x 1/2 inch female inlets, 1 x 1/2 inch BSP female shower outlet and 1 x 3/4 inch BSP female outlet.

Range: [Breathe](#)



FSWM1CY6-0GT0383

0 kg

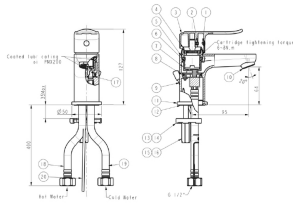
(l)163mm x (w)196mm x (h)111mm

Concealed shower mixer

Breathe bath/shower underwall mixer, single lever, chrome. Includes: 1/2 inch BSP male connections.

Range: [Breathe](#)





FBN1D1AM-0GT0427

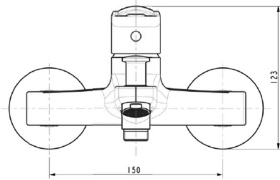
0 kg

(l)0mm x (w)0mm x (h)0mm

Standard basin mixer

Amazon pillar type single lever basin mixer flow rate restricted to 5 ltrs/ min. G1/2 inch female connection ends chrome.

Range: [Amazon](#)



FBHEW2AM-0GT0427

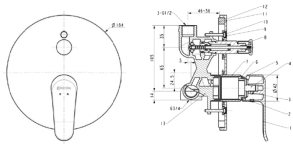
0 kg

(l)0mm x (w)0mm x (h)0mm

Exposed bath mixer

Amazon exposed bath mixer (no hand shower) single lever with diverter 2 x G1/2 inch female inlet, G1/2 inch male outlet chrome.

Range: [Amazon](#)



FBSCW2AM-0GT0427

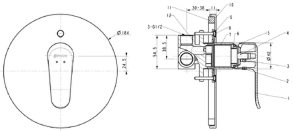
0 kg

(l)0mm x (w)0mm x (h)0mm

Concealed diverter mixer

Amazon concealed diverter mixer single lever with diverter 2 x G1/2 inch female inlet, G1/2 inch female outlet, G3/4 inch female outlet chrome.

Range: [Amazon](#)



FSWM1CAM-0GT0427

0 kg

(l)0mm x (w)0mm x (h)0mm

Concealed shower mixer

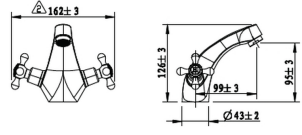
Amazon concealed shower or bath mixer single lever 2 x G1/2 inch female inlet, G1/2 inch female outlet chrome.

Range: [Amazon](#)





BATHROOM TAPS & MIXERS



[EX5003CH/N](#)

EX5003CH

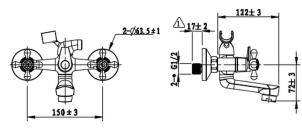
0 kg

(l)185mm x (w)185mm x (h)120mm

Standard basin mixer

Roma basin mixer, chrome.

Range: [Roma](#)



[EX5001CH/N](#)

EX5001CH

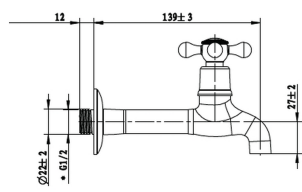
0 kg

(l)220mm x (w)165mm x (h)205mm

Exposed bath mixer

Roma bath mixer, wall-type, chrome.

Range: [Roma](#)



[AEX5013CH/N](#)

AEX5013CH

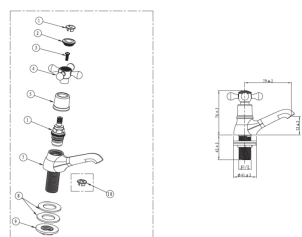
0 kg

(l)180mm x (w)105mm x (h)60mm

Extended bib tap

Roma extended bib tap, 15mm, chrome.

Range: [Roma](#)



[AEX5006CH/N](#)

AEX5006CH

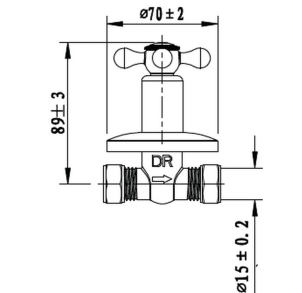
0 kg

(l)150mm x (w)120mm x (h)65mm

Pillar tap

Roma pillar tap, 15mm, chrome.

Range: [Roma](#)



[AEX5005CCH/N](#)

AEX5005CCH

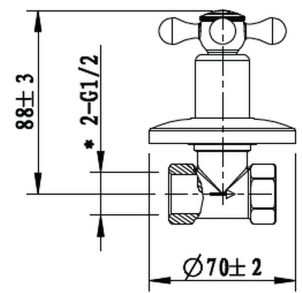
0 kg

(l)125mm x (w)85mm x (h)80mm

Stop tap

Roma undertile stop tap, CXC, 15mm, chrome.

Range: [Roma](#)



[AEX5005CH/N](#)

AEX5005CH

0 kg

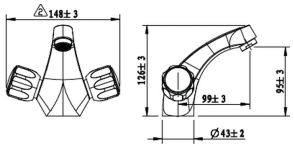
(l)125mm x (w)85mm x (h)80mm

Stop tap

Roma undertile stop tap, 15mm, chrome.

Range: [Roma](#)





[MI-294/N](#)

MI-294

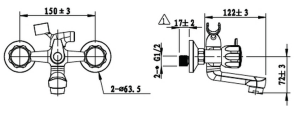
0 kg

(l)185mm x (w)185mm x (h)120mm

Standard basin mixer

One hole. Flow restricted to 9 ltrs/min. 1/2inch BSP female connection ends. CP

Range: [Metsi](#)



[MI-251-15-HQ/N](#)

MI-251-15-HQ

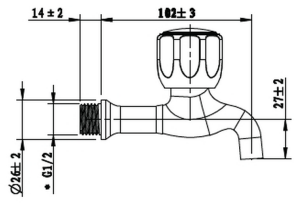
0 kg

(l)220mm x (w)165mm x (h)205mm

Exposed bath mixer

Wall type with diverter, and shower hose and hand shower attachment. 1/2inch BSP male iron connection ends. CP

Range: [Metsi](#)



[MI-206-15/N](#)

MI-206-15

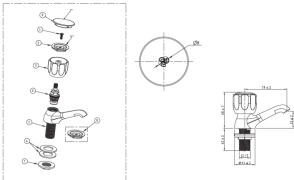
0 kg

(l)150mm x (w)120mm x (h)65mm

Bib tap

With hot and cold indices. 1/2inch BSP male iron connection end. CP

Range: [Metsi](#)



[MI-211-15/N](#)

MI-211-15

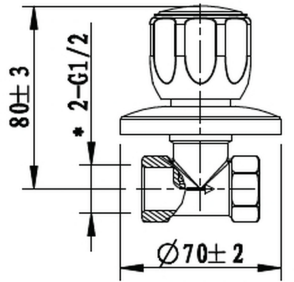
0 kg

(l)150mm x (w)120mm x (h)65mm

Pillar tap

With hot and cold indices. 1/2inch BSP male iron connection end. CP

Range: [Metsi](#)



[MI-228-15/N](#)

MI-228-15

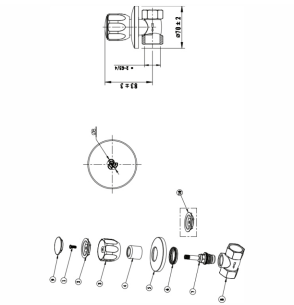
0 kg

(l)125mm x (w)85mm x (h)80mm

Stop tap

With sliding wall flange. 1/2inch BSP female iron connection ends. CP

Range: [Metsi](#)



[MI-228-20/N](#)

MI-228-20

0 kg

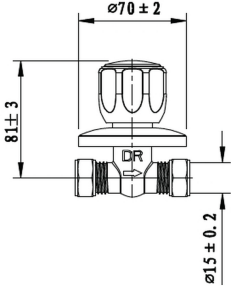
(l)125mm x (w)85mm x (h)80mm

Stop tap

With sliding wall flange. 3/4inch BSP female iron connection ends. CP

Range: [Metsi](#)





[MI-238-15/N](#)

0 kg

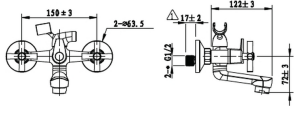
MI-238-15

(l)125mm x (w)85mm x (h)80mm

Stop tap

With sliding wall flange. 15mm compression connection ends. CP

Range: [Metsi](#)



[LO-249/N](#)

0 kg

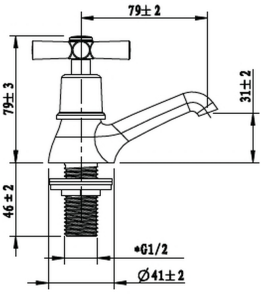
LO-249

(l)220mm x (w)165mm x (h)205mm

Exposed bath mixer

Wall type with diverter, and shower hose with hand shower attachment. 1/2inch BSP male iron connection ends. CP

Range: [Ledimo](#)



[LO-214-15/N](#)

0 kg

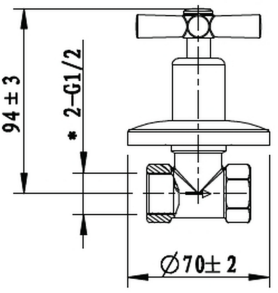
LO-214-15

(l)150mm x (w)120mm x (h)65mm

Pillar tap

Square design with hot and cold indices. 1/2inch BSP male iron connection end. CP

Range: [Ledimo](#)



[LO-228-15/N](#)

0 kg

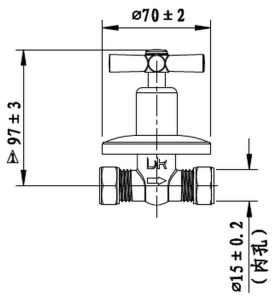
LO-228-15

(l)125mm x (w)85mm x (h)80mm

Stop tap

With sliding wall flange. 1/2inch BSP female iron connection ends. CP

Range: [Ledimo](#)



[LO-238-15/N](#)

0 kg

LO-238-15

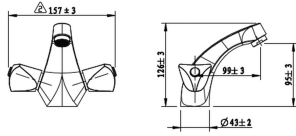
(l)125mm x (w)85mm x (h)80mm

Stop tap

With sliding wall flange. 15mm compression connection ends. CP

Range: [Ledimo](#)





[294CA/N](#)

0 kg

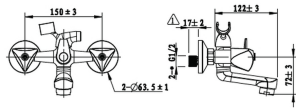
294CA

(l)185mm x (w)185mm x (h)120mm

Standard basin mixer

One hole. Flow restricted to 6 ltrs/min. 1/2inch BSP female connection ends. CP

Range: [Carina](#)



[251CA-15/N](#)

0 kg

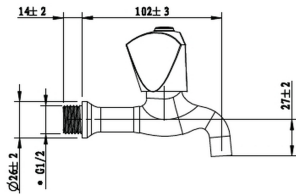
251CA-15

(l)220mm x (w)165mm x (h)205mm

Exposed bath mixer

Wall type with diverter. Without hand shower attachment. 1/2inch BSP male iron connection ends. CP

Range: [Carina](#)



[206CA-15/N](#)

0 kg

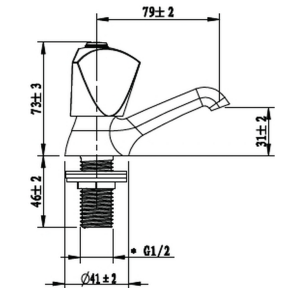
206CA-15

(l)150mm x (w)120mm x (h)65mm

Bib tap

With hot and cold indices. 1/2inch BSP male iron connection end. CP

Range: [Carina](#)



[214CA-15/N](#)

0 kg

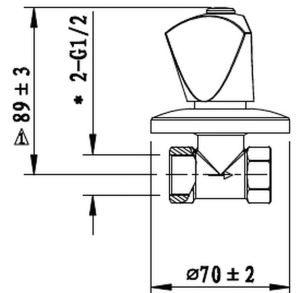
214CA-15

(l)150mm x (w)120mm x (h)65mm

Pillar tap

With hot and cold indices. 1/2inch BSP male iron connection end. CP

Range: [Carina](#)



[228CA-15/N](#)

0 kg

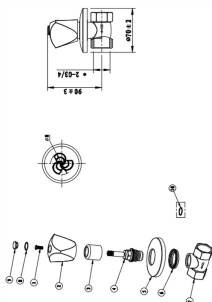
228CA-15

(l)125mm x (w)85mm x (h)80mm

Stop tap

With sliding wall flange. 1/2inch BSP female iron connection ends. CP

Range: [Carina](#)



[628CA-20/N](#)

0 kg

628CA-20

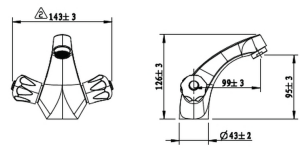
(l)125mm x (w)85mm x (h)80mm

Stop tap

Carina underwall stop tap 20mm FxF chrome.

Range: [Carina](#)





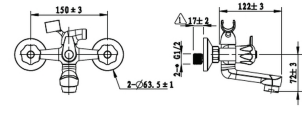
3294ST/N
0 kg

3294ST
(l)185mm x (w)185mm x (h)120mm

Standard basin mixer

One hole. Flow restricted to 9 ltrs/min. 1/2inch BSP female connection ends. CP

Range: [Stella](#)



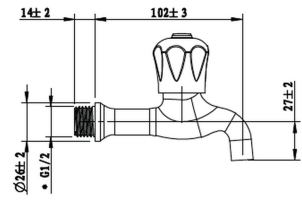
3351ST-15-HQ/N
0 kg

3351ST-15-HQ
(l)220mm x (w)165mm x (h)205mm

Exposed bath mixer

Wall type with diverter, hand shower hose and hand shower attachment. 1/2inch BSP male iron connection ends. CP

Range: [Stella](#)



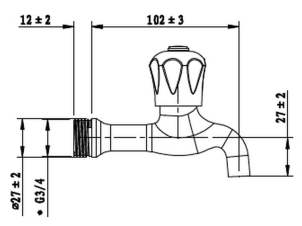
3306ST-15/N
0 kg

3306ST-15
(l)150mm x (w)120mm x (h)65mm

Bib tap

With hot and cold indices. 1/2inch BSP male iron connection end. CP

Range: [Stella](#)



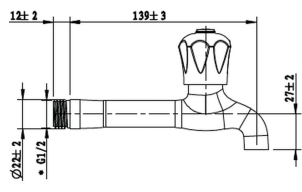
3306ST-20/N
0 kg

3306ST-20
(l)150mm x (w)120mm x (h)65mm

Bib tap

With hot and cold indices. 1/2inch BSP male iron connection end. CP

Range: [Stella](#)



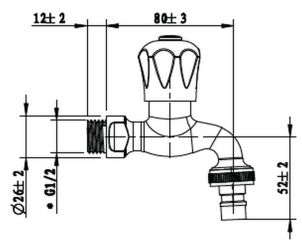
3306ST/EXT-15/N
0 kg

3306ST/EXT-15
(l)180mm x (w)105mm x (h)60mm

Extended bib tap

With hot and cold indices. 1/2inch BSP male iron connection end. CP

Range: [Stella](#)



3309ST-15/N
0 kg

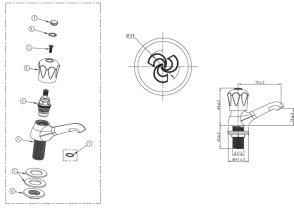
3309ST-15
(l)150mm x (w)120mm x (h)65mm

Hose bib tap

With hot and cold indices. 1/2inch BSP male iron connection end inlet, 3/4inch BSP male iron connection end outlet. CP

Range: [Stella](#)





3311ST-15/N

0 kg

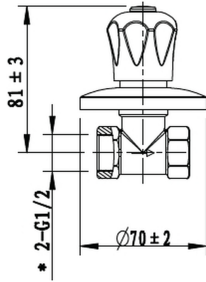
Pillar tap

With hot and cold indices. 1/2inch BSP male iron connection end. CP

Range: [Stella](#)

3311ST-15

(l)150mm x (w)120mm x (h)65mm



3328ST-15/N

0 kg

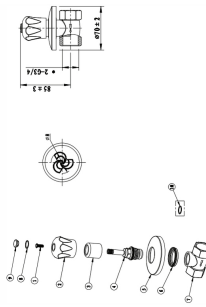
Stop tap

With sliding wall flange. 1/2inch BSP female iron connection ends. CP

Range: [Stella](#)

3328ST-15

(l)125mm x (w)85mm x (h)80mm



3328ST-20/N

0 kg

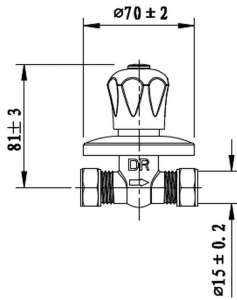
Stop tap

With sliding wall flange. 3/4inch BSP female iron connection ends. CP

Range: [Stella](#)

3328ST-20

(l)125mm x (w)85mm x (h)80mm



3338ST-15/N

0 kg

Stop tap

With sliding wall flange. 15mm compression connection ends. CP

Range: [Stella](#)

3338ST-15

(l)125mm x (w)85mm x (h)80mm



249/N

249

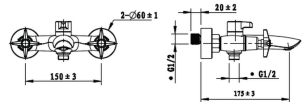
0 kg

(l)210mm x (w)195mm x (h)175mm

Exposed bath mixer

Wall type with diverter. Without hand shower attachment. 1/2inch BSP male iron connection ends. CP

Range: [Star](#)



251-15/N

251-15

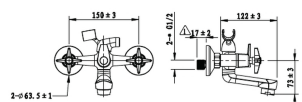
0 kg

(l)220mm x (w)165mm x (h)205mm

Exposed bath mixer

Wall type with diverter. Without hand shower attachment. 1/2inch BSP male iron connection ends. CP

Range: [Star](#)



206-15/N

206-15

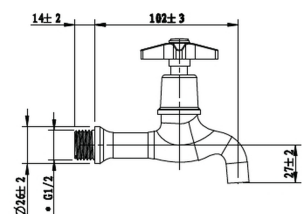
0 kg

(l)150mm x (w)120mm x (h)65mm

Bib tap

With hot and cold indices. 1/2inch BSP male iron connection end. CP

Range: [Star](#)



206-20/N

206-20

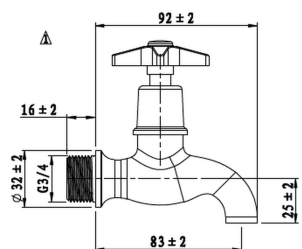
0 kg

(l)150mm x (w)120mm x (h)65mm

Bib tap

With hot and cold indices. 1/2inch BSP male iron connection end. CP

Range: [Star](#)



206EXT-15/N

206EXT-15

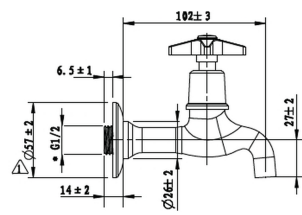
0 kg

(l)150mm x (w)120mm x (h)65mm

Extended bib tap

With hot and cold indices. 1/2inch BSP male iron connection end. CP

Range: [Star](#)



207EC-20/N

207EC-20

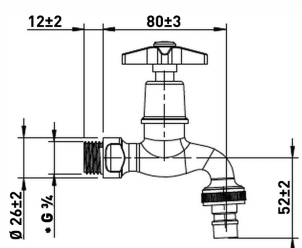
0 kg

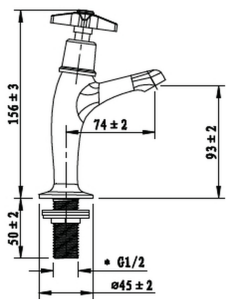
(l)150mm x (w)120mm x (h)65mm

Hose bib tap

With 3/4inch wing nut and lining for 3/4inch hose pipe. 3/4inch BSP male iron connection end. CP

Range: [Star](#)





113/N

0 kg

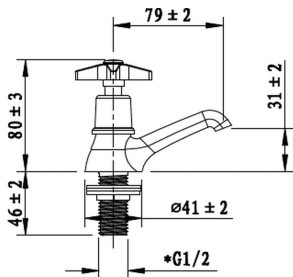
113

(l)225mm x (w)125mm x (h)65mm

Pillar tap

Hi-waist with hot and cold indices. 1/2inch BSP male iron connection end. CP

Range: [Star](#)



211-15/N

0 kg

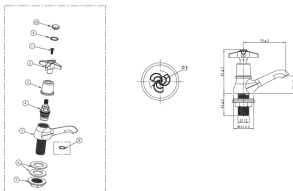
211-15

(l)150mm x (w)120mm x (h)65mm

Pillar tap

With hot and cold indices. 1/2inch BSP male iron connection end. CP

Range: [Star](#)



217-15/N

0 kg

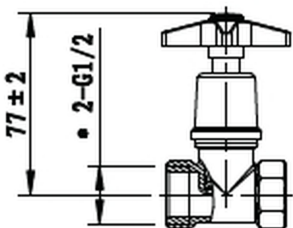
217-15

(l)150mm x (w)120mm x (h)65mm

Pillar tap

Star pillar tap chrome.

Range: [Star](#)



226-15/N

0 kg

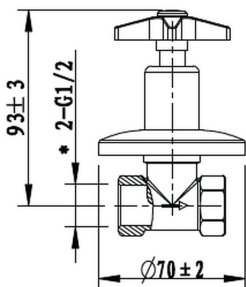
226-15

(l)125mm x (w)85mm x (h)80mm

Stop tap

1/2inch BSP female iron connection ends. CP

Range: [Star](#)



228-15/N

0 kg

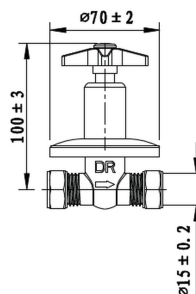
228-15

(l)125mm x (w)85mm x (h)80mm

Stop tap

With sliding wall flange. 1/2inch BSP female iron connection ends. CP

Range: [Star](#)



238-15/N

0 kg

238-15

(l)125mm x (w)85mm x (h)80mm

Stop tap

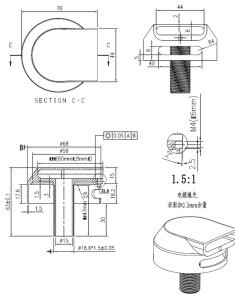
With sliding wall flange. 15mm compression connection ends. CP

Range: [Star](#)





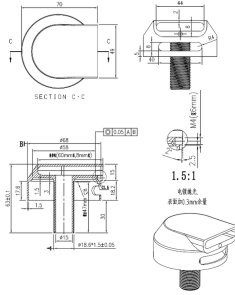
BATH FILLERS

**030/N**

0 kg

Bath filler

Combination bath filler and overflow with integral anti back syphonage prevention. 2 x 1/2inch BSP female inlets with blanking plug for left hand or right hand entry.

Range: [Cobra](#)**1811CH/N**

0 kg

Bath filler

Bath filler/overflow with n.r.v.

Range: [Cobra](#)

1811CH



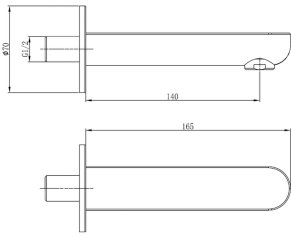
[060/N/N](#)

0 kg

Bath spout

Bath wall spout with wall flange. 160mm throw. 3/4inch BSP female Iron inlet. CP

Range: [Cobra](#)



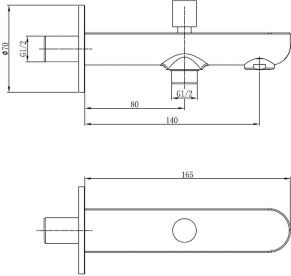
[2204CH/N](#)

0 kg

Bath spout

Diverter bath spout, chrome.

Range: [Cobra](#)



2204CH

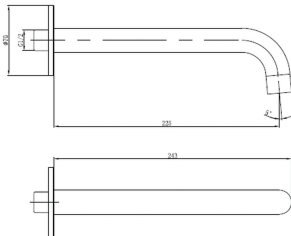
[2208CH/N](#)

0 kg

Bath spout

Wall spout, 230mm, chrome.

Range: [Cobra](#)



2208CH

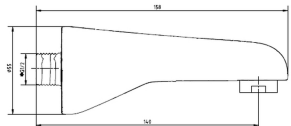
[FSP158BT-0GT0157](#)

0 kg

Bath spout

Wall mounted bath spout short 158mm long G1/2 inch male connection ends chrome.

Range: [Zambezi](#)



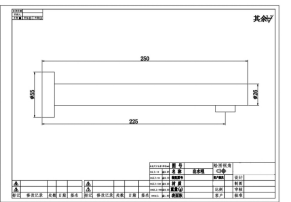
[FSP250BT-0GT0157](#)

0 kg

Bath spout

Wall mounted bath spout long with wall flange 250mm long G1/2 inch male connection ends chrome.

Range: [Zambezi](#)





SHOWER COLLECTION

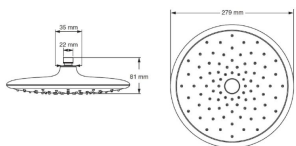
[FSWHR1SP-0GT0161](#)

0 kg

Shower head

Spectra shower head rain 279mm chrome. Shower head rain spray. Drench Rain Spray pattern for maximum comfort.

Range: [Spectra](#)



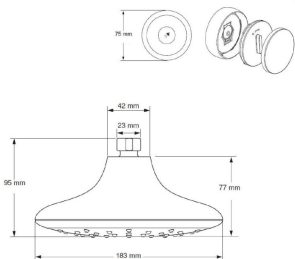
[FSWHR4S4-0GT0161](#)

0 kg

Shower head

Spectra shower head etouch bluetooth remote chrome. Easy reach bluetooth remote.

Range: [Spectra](#)



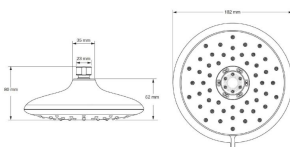
[FSWHR4SP-0GT0161](#)

0 kg

Shower head

Spectra shower head switch 4 spray chrome. Shower head paddle switch. Drench, Sensitive, Powerwash, Massage spray patterns. Easy switch Aquatoggle.

Range: [Spectra](#)



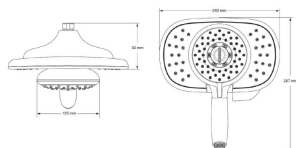
[FSWHR4S6-0GT0161](#)

0 kg

Shower head set

Spectra Duo shower head + hand shower chrome. Combine the enhanced control of a hand shower with the coverage of a shower head with the diverter paddle for a taylored experience. Drench, Sensitive, Powerwash, Massage spray patterns. Easy switch Aquatoggle.

Range: [Spectra](#)



[FSWHR1BN-0GT0156](#)

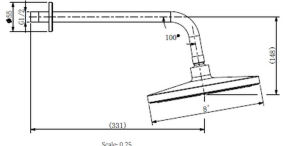
0 kg

(l)740mm x (w)220mm x (h)80mm

Shower head

Shower head round 200mm single function with ball joint connector E51200mm diameter G1/2 inch female connection ends chrome.

Range: [Zambezi](#)



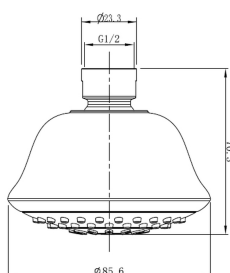
[FSWHR1GN-0GT0156](#)

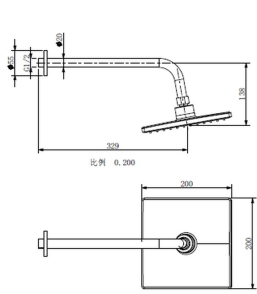
0 kg

Shower head

Shower head round with ball joint connector Flow restricted to 8 ltrs/min G1/2 inch female connection ends chrome.

Range: [Zambezi](#)





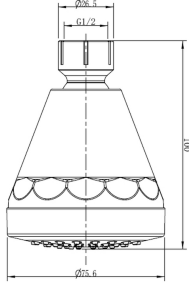
[FSWHS1GN-0GT0156](#)

0 kg

Shower head

Shower head square single function with ball joint connector 200mm G1/2 inch female connection ends chrome.

Range: [Zambezi](#)



[FSWHT1GN-0GT0156](#)

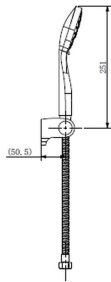
0 kg

(l)100mm x (w)70mm x (h)70mm

Shower head

Shower head triangular with ball joint connector flow restricted to 8 ltrs/min G1/2 inch female connection ends chrome.

Range: [Zambezi](#)



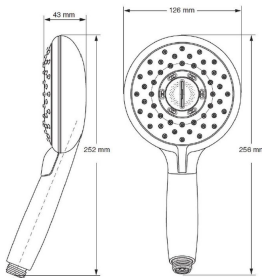
[FSWS5FGN-0GT0161](#)

0 kg

Hand shower set

Hand shower set 3 function shower head with holder and hose chrome.

Range: [Cobra](#)



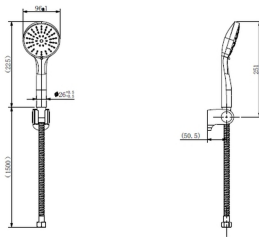
[FHS4SP-0GT0161](#)

0 kg

Hand shower

Spectra hand shower 4 spray chrome. Multi-spray: Drench, Sensitive, Powerwash, Massage spray patterns. Easy switch Aquatoggle.

Range: [Spectra](#)



[FSACOEGN-0GT0150](#)

0 kg

Wall outlet elbow

Outlet elbow for hand shower brass G1/2 inch connection ends chrome.

Range: [Zambezi](#)



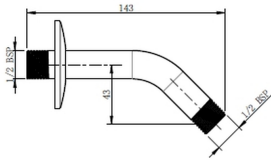
[FSACA1GN-0GT0150](#)

0 kg

Shower arm

Wall mounted shower arm short with wall flange 143mm long 2 x G1/2 inch male connection ends chrome.

Range: [Zambezi](#)



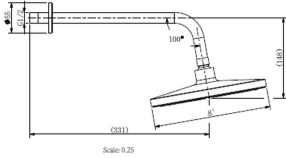
[FSACA2GN-0GT0150](#)

0 kg

Shower arm

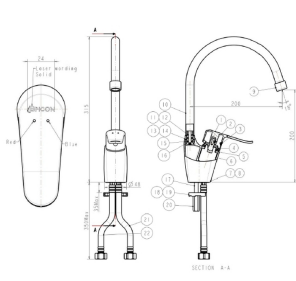
Wall mounted shower arm long with wall flange 331mm long 2 x G1/2 inch male connection ends chrome.

Range: [Zambezi](#)





KITCHEN SINGLE LEVER MIXERS



FSK1D1AM-0GT0427

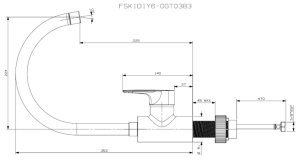
0 kg

(l)0mm x (w)0mm x (h)0mm

Pillar type sink mixer

Amazon pillar type sink mixer single lever flow rate restricted to 6.2 ltrs/ min. G1/2 inch female connection ends chrome.

Range: [Amazon](#)



FSK1D1Y6-0GT0383

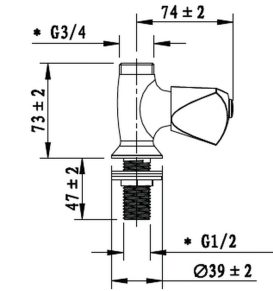
0 kg

(l)472mm x (w)307mm x (h)79mm

Pillar type sink mixer

Breathe sink mixer with a swivel outlet, single lever, chrome. Includes: 1/2 inch BSP female inlets.

Range: [Breathe](#)



115CA/N

0 kg

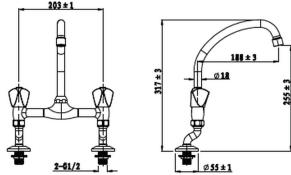
115CA

(l)150mm x (w)120mm x (h)65mm

Sink tap outlet

Sink pillar tap. Swivel outlet not supplied. 1/2inch BSP male iron connection end. CP

Range: [Carina](#)



171/041CA/N

0 kg

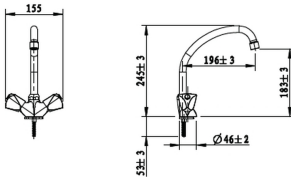
171/041CA

(l)305mm x (w)135mm x (h)95mm

Pillar type sink mixer

Pillar type with aerated swivel outlet. 1/2inch BSP male iron connection ends. CP

Range: [Carina](#)



296CA/N

0 kg

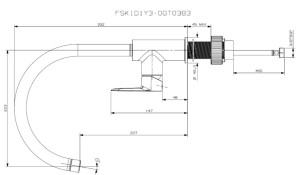
296CA

(l)280mm x (w)170mm x (h)95mm

Pillar type sink mixer

One hole with aerated swivel outlet. 1/2inch BSP female connection ends. CP

Range: [Carina](#)



FSK1D1Y3-0GT0383

0 kg

(l)472mm x (w)307mm x (h)79mm

Pillar type sink mixer

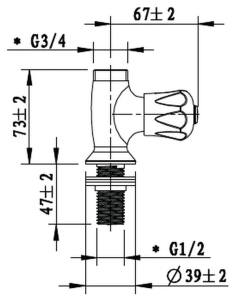
Den C-spout pillar sink mixer, swivel outlet, chrome plated.

Range: [Den](#)





KITCHEN TAPS & MIXERS



[3215ST/N](#)

0 kg

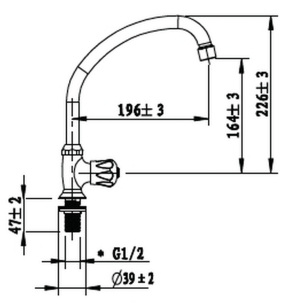
3215ST

(l)150mm x (w)120mm x (h)65mm

Sink tap outlet

Without swivel outlet. 1/2inch BSP male iron connection ends. CP

Range: [Stella](#)



[P-3219ST/041E/N](#)

0 kg

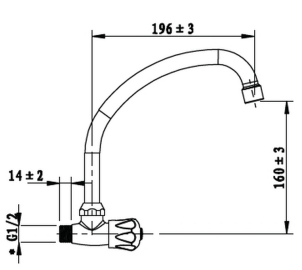
P-3219ST/041E

(l)305mm x (w)135mm x (h)55mm

Prep bowl tap

Stella prep tap swivel outlet chrome pre-packed.

Range: [Stella](#)



[P-3316ST041E/N](#)

0 kg

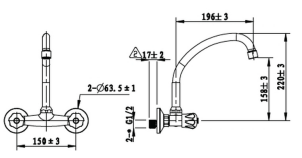
P-3316ST041E

(l)305mm x (w)135mm x (h)55mm

Prep bowl tap

Stella wall-mounted tap chrome pre-packed includes aerated swivel outlet & plastic bag.

Range: [Stella](#)



[3366/041/10ST/N](#)

0 kg

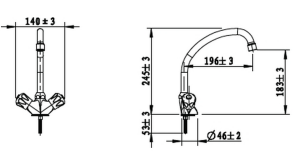
3366/041/10ST

(l)305mm x (w)135mm x (h)95mm

Wall type sink mixer

Wall type sink mixer with aerated swivel outlet. 1/2inch BSP male iron connection ends. CP

Range: [Stella](#)



[3396ST/N](#)

0 kg

3396ST

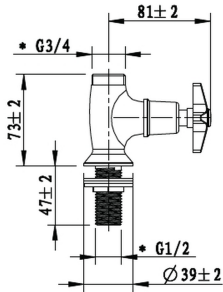
(l)280mm x (w)170mm x (h)95mm

Pillar type sink mixer

One hole with aerated swivel outlet. 1/2inch BSP female connection ends. CP

Range: [Stella](#)





[115/N](#)

0 kg

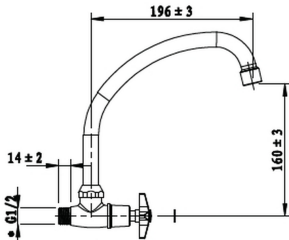
115

(l)150mm x (w)120mm x (h)65mm

Sink tap outlet

Pillar type sink tap. No swivel outlet. 1/2inch BSP male iron connection end. CP

Range: [Star](#)



[P-216/041/10E/N](#)

0 kg

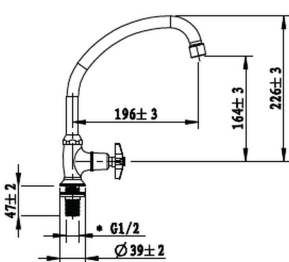
P-216/041/10E

(l)305mm x (w)135mm x (h)55mm

Prep bowl tap

Star sink mixer chrome pre-packed includes swivel outlet.

Range: [Star](#)



[P-219/041/10E/N](#)

0 kg

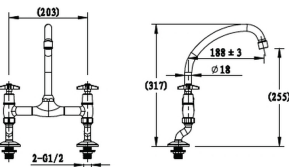
P-219/041/10E

(l)305mm x (w)135mm x (h)55mm

Prep bowl tap

Prep tap swivel outlet pre-packed.

Range: [Star](#)



[171/041/N](#)

0 kg

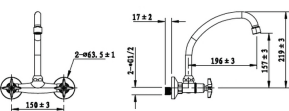
171/041

(l)305mm x (w)135mm x (h)95mm

Pillar type sink mixer

Pillar type sink mixer with aerated swivel outlet. 1/2inch BSP male iron connection ends. CP

Range: [Star](#)



[266/041/10/N](#)

0 kg

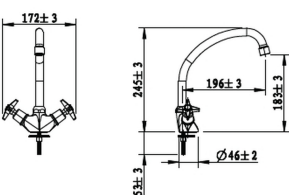
266/041/10

(l)305mm x (w)135mm x (h)95mm

Wall type sink mixer

Wall type sink mixer with aerated swivel outlet. 1/2inch BSP male iron connection ends. CP

Range: [Star](#)



[296/N](#)

0 kg

296

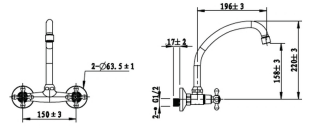
(l)280mm x (w)170mm x (h)95mm

Pillar type sink mixer

One hole with aerated swivel outlet. 1/2inch BSP female connection ends. CP

Range: [Star](#)





[EX5002CH/N](#)

EX5002CH

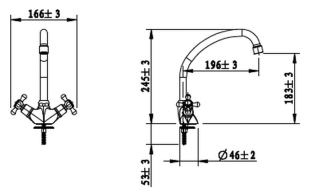
0 kg

(l)305mm x (w)135mm x (h)95mm

Wall type sink mixer

Roma sink mixer, wall-type, chrome.

Range: [Roma](#)



[EX5004CH/N](#)

EX5004CH

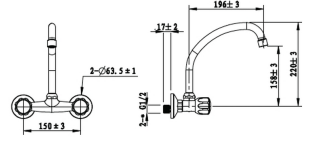
0 kg

(l)280mm x (w)170mm x (h)95mm

Pillar type sink mixer

Roma single-hole sink mixer, chrome.

Range: [Roma](#)



[MI-266/041/10/N](#)

MI-266/041/10

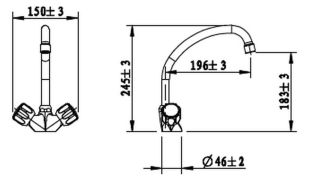
0 kg

(l)305mm x (w)135mm x (h)95mm

Wall type sink mixer

Wall type sink mixer with aerated swivel outlet. 1/2inch BSP male iron connection ends. CP

Range: [Metsi](#)



[MI-296/N](#)

MI-296

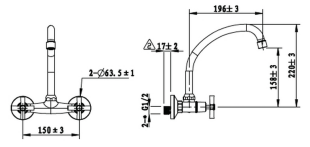
0 kg

(l)280mm x (w)170mm x (h)95mm

Pillar type sink mixer

One hole with aerated swivel outlet. 1/2inch BSP female connection ends. CP

Range: [Metsi](#)



[LO-266/041/10/N](#)

LO-266/041/10

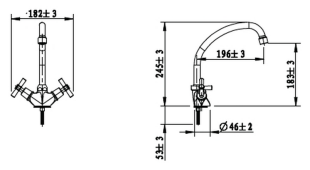
0 kg

(l)305mm x (w)135mm x (h)95mm

Wall type sink mixer

Wall type with aerated swivel outlet. 1/2inch BSP male iron connection ends. CP

Range: [Ledimo](#)



[LO-296/N](#)

LO-296

0 kg

(l)280mm x (w)170mm x (h)95mm

Pillar type sink mixer

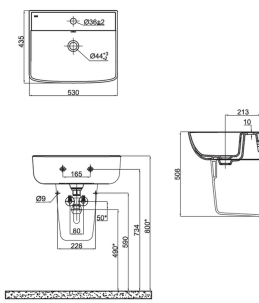
One hole with aerated swivel outlet. 1/2inch BSP female connection ends. CP

Range: [Ledimo](#)





BASINS AND PEDESTALS



[CARPESQ1-6DT01](#)

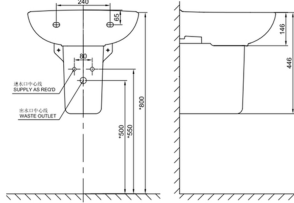
0 kg

(l)350mm x (w)267mm x (h)315mm

Semi pedestal

Cobra Arrive Square semi-pedestal. 267mm wide X 315mm high. Wall fixing set & installation manual included. Compatible with Cobra Arrive Square wall hung basin [CARBAWH1-6DT01].

Range: [Arrive](#)



[CWLPERD2-6DT01](#)

0 kg

(l)310mm x (w)260mm x (h)290mm

Semi pedestal

Cobra Round semi-pedestal. 270mm wide X 308mm high. Wall fixing set & installation manual included. Compatible with Cobra Shelter Round wall hung basin [CSHBAWH2-6DT01].

Range: [Welcome](#)



[CARBAWH1-6DT01](#)

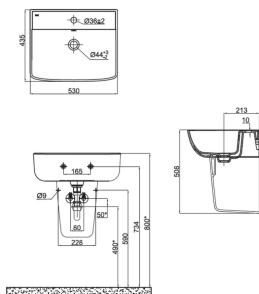
0 kg

(l)645mm x (w)473mm x (h)198mm

Wall hung basin

Cobra Arrive Square wall hung basin. 645mm long X 473 mm wide. 1 X pre-punched tap hole in the centre of the basin. Overflow, wall fixing set & installation manual included. Compatible with Cobra Arrive square semi-pedestal [CARPESQ1-6DT01]. Compatible with Cobra standard-sized basin mixers.

Range: [Arrive](#)



[CSHBAWH1-6DT01](#)

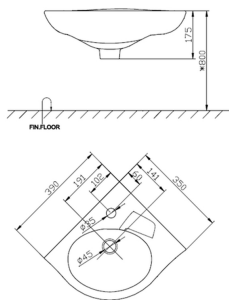
0 kg

(l)390mm x (w)350mm x (h)182mm

Wall hung basin

Cobra Shelter wall hung corner basin. 390mm long X 350mm wide. 1 X pre-punched tap hole in the centre of the basin. Overflow, wall fixing set & installation manual included. Compatible with Cobra standard-sized basin mixers.

Range: [Shelter](#)



[CSHBAWH2-6DT01](#)

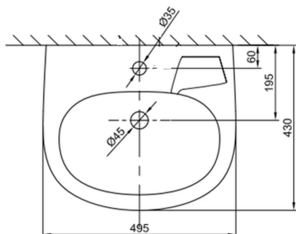
0 kg

(l)430mm x (w)495mm x (h)190mm

Wall hung basin

Cobra Shelter Round wall hung basin. 495mm long X 430mm wide. 1 X pre-punched tap hole in the centre of the basin. Overflow, expansion bolts & installation manual included. Compatible with Cobra round full pedestal [CWLPERD1-6DT01] and round semi-pedestal [CWLPERD2-6DT01]. Also compatible with Cobra standard-sized basin mixers.

Range: [Shelter](#)



[CWLBAWH1-6DT01](#)

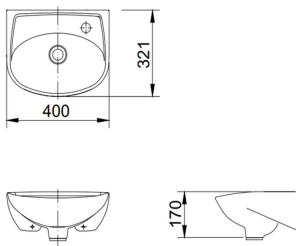
0 kg

(l)400mm x (w)170mm x (h)321mm

Wall hung basin

Cobra Welcome Small round wall hung basin. 400mm long X 320mm wide. 1 X pre-punched tap hole on the right hand side of the basin. Wall fixing set & installation manual included. Compatible with Cobra standard-sized basin mixers.

Range: [Welcome](#)



[CWLBAWH2-6DT01](#)

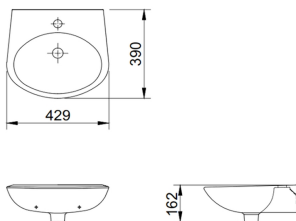
0 kg

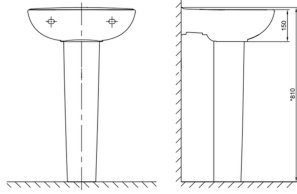
(l)429mm x (w)162mm x (h)390mm

Wall hung basin

Cobra Welcome Medium round wall hung basin. 430mm long X 390mm wide. 1 X pre-punched tap hole in the centre of the basin. Wall fixing set & installation manual included. Compatible with Cobra standard-sized basin mixers.

Range: [Welcome](#)





[CWLPERD1-6DT01](#)

0 kg

(l)655mm x (w)165mm x (h)140mm

Full pedestal

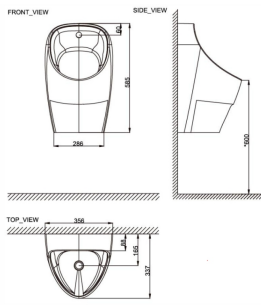
Cobra Round full pedestal. 165mm wide X 665mm high. Wall fixing set & installation manual included. Compatible with Cobra Shelter Round wall hung basin [CSHBAWH2-6DT01].

Range: [Welcome](#)





URINALS



[CPSURWH1-6DT01](#)

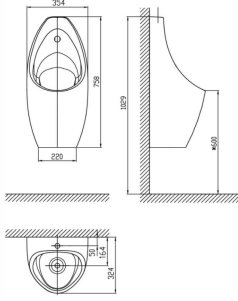
0 kg

Urinal

Range: [Pause](#)



(l)610mm x (w)380mm x (h)355mm



[CSNURWH1-6DT01](#)

0 kg

Urinal

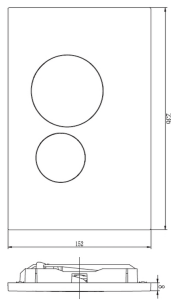
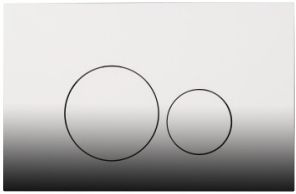
Range: [Snug](#)



(l)758mm x (w)385mm x (h)330mm



TOILETS

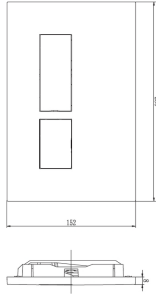


[MZ007187](#)

0 kg

(l)270mm x (w)365mm x (h)280mm

Actuator plate
Range: [Cobra](#)

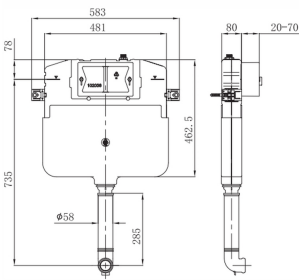


[MZ007188](#)

0 kg

(l)270mm x (w)365mm x (h)280mm

Actuator plate
Range: [Cobra](#)



[CENSHJNN-2CO](#)

0 kg

(l)760mm x (w)495mm x (h)105mm

Concealed Cistern
Range: [Cobra](#)



[CARPAWH1-6DT01](#)

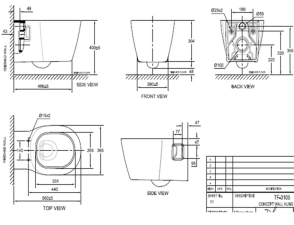
0 kg

(l)560mm x (w)352mm x (h)365mm

Wall hung toilet

Cobra Arrive wall hung toilet pan only. Dual flush capability with 3L and 6L flush available. Box rim. Installation manual and side windows included. Compatible with Cobra Arrive seat for wall hung toilet pan [CARSTWH1-6DT01]. Also compatible with concealed cisterns specifically designed for wall hung toilet pans.

Range: [Arrive](#)



[CARSTWH1-6DT01](#)

0 kg

(l)369mm x (w)48mm x (h)476mm

Toilet seat for WH pan

Cobra Arrive soft close seat for wall hung toilet pan. Installation manual included. Compatible with Cobra Arrive wall hung toilet pan [CARPAWH1-6DT01].

Range: [Arrive](#)



[CPSPAWH1-6DT01](#)

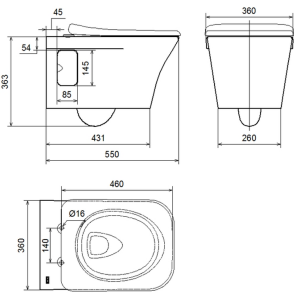
0 kg

(l)550mm x (w)353mm x (h)363mm

Wall hung toilet

Cobra Pause wall hung toilet pan only. Dual flush capability with 3L and 6L flush available. Includes hygiene rim technology. Installation manual and side windows included. Compatible with Cobra Pause seat for wall hung toilet pan [CPSSTWH1-6DT01]. Also compatible with concealed cisterns specifically designed for wall hung toilet pans.

Range: [Pause](#)



[CPSSTWH1-6DT01](#)

0 kg

(l)365mm x (w)52mm x (h)449mm

Toilet seat for WH pan

Cobra Pause seat for wall hung toilet pan. Includes installation manual. Compatible with Cobra Pause wall hung toilet pan [CPSPAWH1-6DT01].

Range: [Pause](#)



[CSHPAWH1-6DT01](#)

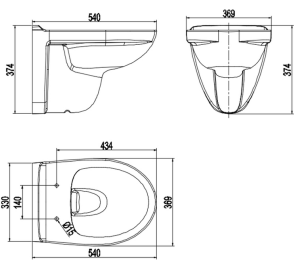
0 kg

(l)368mm x (w)373mm x (h)540mm

Wall hung toilet

Cobra Shelter wall hung toilet pan only. Dual flush capability with 3L and 4.5L flush available. Includes rimless flushing technology. Installation manual included. Compatible with Cobra Shelter seat for wall hung toilet pan [CSHSTWH1-6DT01]. Also compatible with concealed cisterns specifically designed for wall hung toilet pans.

Range: [Shelter](#)





[CSHSTWH1-6DT01](#)

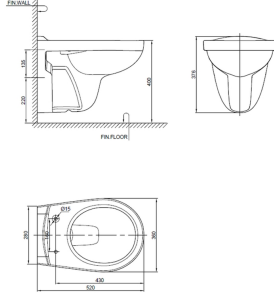
0 kg

(l)385mm x (w)70mm x (h)475mm

Toilet seat for WH pan

Cobra Shelter soft close seat for wall hung toilet pan. Compatible with Cobra Shelter wall hung toilet pan [CSHPAWH1-6DT01].

Range: [Shelter](#)



[CWLPAWH1-6DT01](#)

0 kg

(l)400mm x (w)360mm x (h)520mm

Wall hung toilet

Cobra Welcome wall hung toilet pan only. Dual flush capability with 4L and 6L flush available. Box rim. Installation manual included. Compatible with Cobra Welcome seat for wall hung toilet pan [CWLSTWH1-6DT01]. Also compatible with concealed cisterns specifically designed for wall hung toilet pans.

Range: [Welcome](#)



[CWLSTWH1-6DT01](#)

0 kg

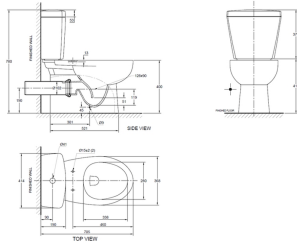
(l)363mm x (w)60mm x (h)410mm

Toilet seat for WH pan

Cobra Welcome soft close seat for wall hung toilet pan. Includes right and left damper kits and hinge kit. Compatible with Cobra Welcome wall hung toilet pan [CWLPAWH1-6DT01].

Range: [Welcome](#)





CARCCST1-6DT01

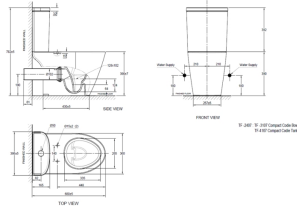
0 kg

(l)780mm x (w)430mm x (h)690mm

Close Coupled Suite

Cobra Arrive Close coupled toilet suite. Top, dual flush capability with 3L and 4.5L flush available. Box rim. Package includes cistern and cistern fittings, pan, soft close seat and cover, connector, floor fixing set, and installation manual.

Range: [Arrive](#)



CPSCCST1-6DT01

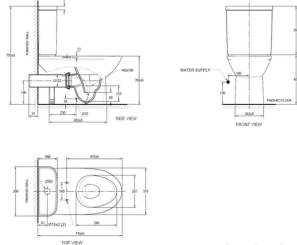
0 kg

(l)787mm x (w)391mm x (h)685mm

Close Coupled Suite

Cobra Pause Close coupled toilet suite. Top, dual flush capability with 3L and 4.2L flush available. Box rim. Package includes cistern and cistern fittings, pan, soft close seat and cover, connector, floor fixing set, overflow plug hole, and installation manual.

Range: [Pause](#)



CSHCCST1-6DT01

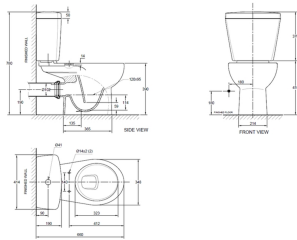
0 kg

(l)792mm x (w)399mm x (h)716mm

Close Coupled Suite

Cobra Shelter Close coupled toilet suite. Top, dual flush capability with 3L and 4.2L flush available. Box rim. Package includes cistern and cistern fittings, pan, soft close seat and cover, connector, floor fixing set, and installation manual.

Range: [Shelter](#)



CWLCCST1-6DT01

0 kg

(l)780mm x (w)415mm x (h)660mm

Close Coupled Suite

Cobra Welcome Close coupled toilet suite. Top, dual flush capability with 3L and 6L flush available. Box rim. Package includes cistern and cistern fittings, pan, seat and cover, connector and installation manual.

Range: [Welcome](#)





TOILET FLUSH VALVES

0 kg

Flush valve retrofit

To retrofit all Flushmaster Junior exposed urinal flush valves. Touch free. With blanking cover for the flushvalve button. Batteries not included. Proximity sensing time adjustable (3-20s); Hygiene flush programmed for every 24 hours.

Range: [Cobratron](#)



Image not found or type unknown



FM3-402/N

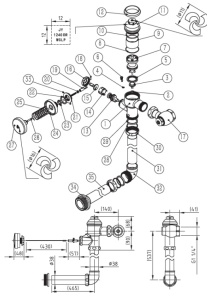
FM3-402

0 kg

Toilet flush valve

Concealed back entry. Non-hold open feature. With integral vacuum breaker, and control stop with integral non-return valve inlet. Adjustable control stop to valve connection 108mm to 140mm. Straight vertical flushpipe RB, Elbow flushpipe connector, straight horizontal flushpipe CP, rubber pan connector. Palm press pushbutton assembly CP with pushrod and captive linkage. 1 1/4inch BSP female iron connection end. Recommended optimum design pressures: inlet flow pressure 30 - 300kPa for back entry WC pans: Maximum system pressure 600kPa.

Range: [Flush Master](#)



FM1-000/N

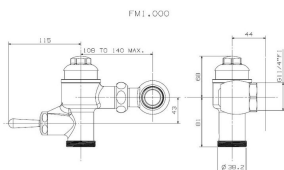
FM1-000

0 kg

Toilet flush valve

Exposed. Non-hold open feature. With wall flange, integral vacuum breaker, and control stop with integral non-return valve inlet. Adjustable control stop to valve connection 108mm to 140mm. 1 1/4inch BSP female iron connection end. Recommended optimum design pressures: inlet flow pressure 30 - 300kPa for back entry WC pans: Maximum system pressure 600kPa.

Range: [Flush Master](#)



FM1-100/N

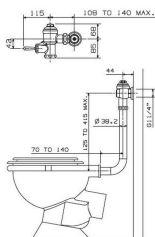
FM1-100

0 kg

Toilet flush valve

Exposed back entry. Non-hold open feature. With wall flange, integral vacuum breaker, and control stop with integral non-return valve inlet. Adjustable control stop to valve connection 108mm to 140mm. With bent flushpipe and rubber pan connector. 1 1/4inch BSP female iron connection end. Recommended optimum design pressures: inlet flow pressure 30 - 300kPa for back entry WC pans: Maximum system pressure 600kPa.

Range: [Flush Master](#)



FM1-210/N

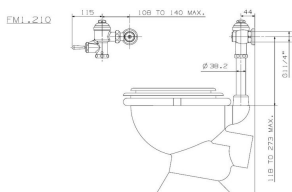
FM1-210

0 kg

Toilet flush valve

Exposed top entry. Non-hold open feature. With wall flange, integral vacuum breaker, and control stop with integral non-return valve inlet. Adjustable control stop to valve connection 108mm to 140mm. With straight flushpipe and compression pan connector. 1 1/4inch BSP female iron connection end. Recommended optimum design pressures: inlet flow pressure 30 - 300kPa for back entry WC pans: Maximum system pressure 600kPa.

Range: [Flush Master](#)



FM1-214/N

FM1-214

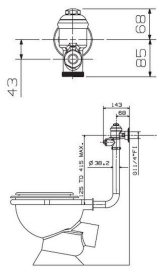
0 kg

Toilet flush valve

Flush valve for toilet top-entry chrome-plated.

Range: [Flush Master](#)





FM2-100/N

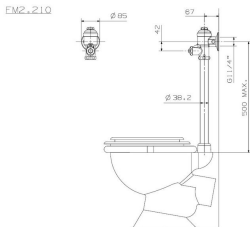
FM2-100

0 kg

Toilet flush valve

Exposed back entry. Non-hold open feature. With wall flange, integral vacuum breaker, and butterfly control inlet. With bent flushpipe and rubber pan connector. 1 1/4inch BSP female iron connection end. Recommended optimum design pressures: inlet flow pressure 30 - 300kPa for back entry WC pans: Maximum system pressure 600kPa.

Range: [Flush Master](#)



FM2-210/N

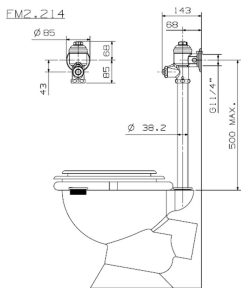
FM2-210

0 kg

Toilet flush valve

Exposed top entry. Non-hold open feature. With wall flange, integral vacuum breaker, and butterfly control inlet. With straight flushpipe and compression pan connector. 1 1/4inch BSP female iron connection end. Recommended optimum design pressures: inlet flow pressure 30 - 300kPa for back entry WC pans: Maximum system pressure 600kPa.

Range: [Flush Master](#)



FM2-214/N

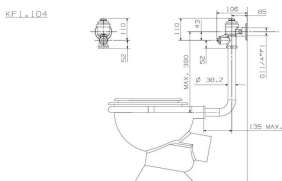
FM2-214

0 kg

Toilet flush valve

Exposed top entry. Non-hold open feature. With wall flange, integral vacuum breaker, and butterfly control inlet. With straight flushpipe and rubber pan connector. 1 1/4inch BSP female iron connection end. Recommended optimum design pressures: inlet flow pressure 30 - 300kPa for back entry WC pans: Maximum system pressure 600kPa.

Range: [Flush Master](#)



KF1-104/N

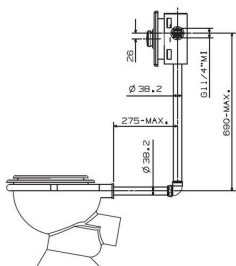
KF1-104

0 kg

Toilet flush valve

Exposed back entry. Non-hold open feature. Econoflush with wall flange, integral vacuum breaker, and butterfly control inlet. With bent flushpipe and rubber pan connector. 1 1/4inch BSP female iron connection end. Recommended optimum design pressures: inlet flow pressure 30 - 300kPa for back entry WC pans: Maximum system pressure 600kPa.

Range: [Flush Master](#)



KF3-412/N

KF3-412

0 kg

Toilet flush valve

Concealed back entry with front access box comprising of galvanised steel underwall box with stainless steel face plate and chrome plated palm press button. Non-hold open feature. Econoflush with integral vacuum breaker and butterfly control inlet. 2 x rough brass flush pipes. Elbow flush pipe connector pre-soldered, rubber pan connector. 1 1/4inch BSP female iron connection end. Recommended optimum design pressures: inlet flow pressure 30 - 300kPa for back entry WC pans: Maximum system pressure 600kPa.

Range: [Flush Master](#)



FJ2-001/N

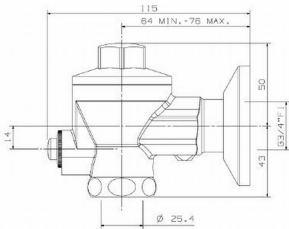
FJ2-001

0 kg

Toilet flush valve

Exposed. Non-hold open feature. With wall flange, integral vacuum breaker, and Ball O Stopinch control inlet. 3/4inch BSP female iron connection end. Recommended optimum design pressures: inlet flow pressure 150 - 500kPa for back entry WC pans: inlet flow pressure 200 - 500kPa for top entry WC pans: Maximum system pressure 600kPa.

Range: [Flush Junior](#)



FJ4-001/N

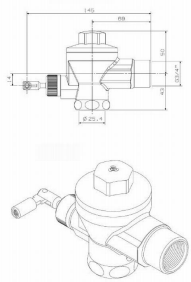
FJ4-001

0 kg

Toilet flush valve

Concealed. Non-hold open feature. With push rod captive linkage, integral vacuum breaker, and Ball O Stopinch control inlet. 3/4inch BSP female iron connection end. Recommended optimum design pressures: inlet flow pressure 150 - 500kPa: Maximum system pressure 600kPa.

Range: [Flush Junior](#)



FJ4-203/N

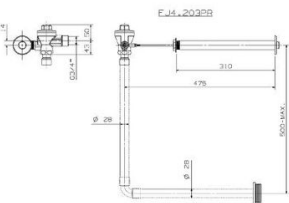
FJ4-203

0 kg

Toilet flush valve

Concealed back entry. Non-hold open feature. With integral vacuum breaker, and Ball O Stopinch control inlet. Straight flushpipe with elbow, 3/4inch BSP female iron connection end. Recommended optimum design pressures: inlet flow pressure 150 - 500kPa for back entry WC pans: Maximum system pressure 600kPa.

Range: [Flush Junior](#)



FJ4-203PR/N

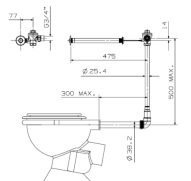
FJ4-203PR

0 kg

Toilet flush valve

Concealed back entry. Institutional version. Non-hold open feature. With integral vacuum breaker, and Ball O Stopinch control inlet. Capillary reducing coupling outlet for 28mm copper flushpipes, inch Through the wallinch vandal resistant guide tube, pushrod and captive linkage, pushbutton assembly and rubber pan connector. 3/4inch BSP female iron connection end. CP pushbutton assembly. Recommended optimum design pressures: inlet flow pressure 150 - 500kPa: Maximum system pressure 600kPa.

Range: [Flush Junior](#)



FJ2-000/N

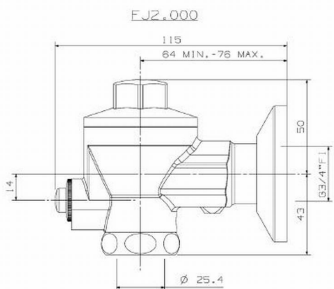
FJ2-000

0 kg

Toilet flush valve

Exposed. Non-hold open feature. With wall flange, integral vacuum breaker, and Ball O Stopinch control inlet. 3/4inch BSP female iron connection end. Recommended optimum design pressures: inlet flow pressure 150 - 500kPa for back entry WC pans: inlet flow pressure 200 - 500kPa for top entry WC pans: Maximum system pressure 600kPa.

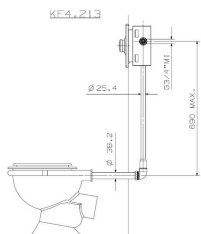
Range: [Flush Junior](#)



0 kg

Toilet flush valve

Concealed back entry. Non-hold open feature. With integral vacuum breaker, and Ball O Stopinch control inlet. Junior econo flush master in a front access box with stainless steel face plate and chrome plated palm press pushbutton. With rough brass vertical and chrome plated horizontal flush pipes complete with pan connector. 1 1/4inch BSP male iron connection end. Recommended optimum design pressures: inlet flow pressure 150 - 500kPa for back entry toilet pans: Maximum system pressure 600kPa.

Range: [Flush Master](#)

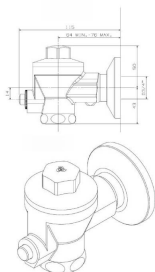


URINAL FLUSH VALVES

FJ6-001/N

FJ6-001

0 kg



Urinal flush valve

Exposed. Non-hold open feature. Econoflush with Ball O Stopinch control inlet, wall flange, additional screw and piston for large bowl and stall urinals. 3/4inch BSP female iron connection end. Recommended optimum design pressures: inlet flow pressure 30 - 500kPa: Maximum system pressure 600kPa.

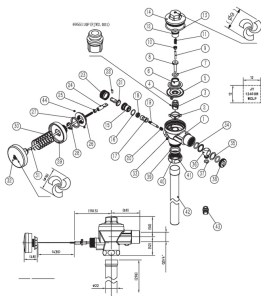
Range: [Flush Junior](#)



FJ8-102/N

FJ8-102

0 kg



Urinal flush valve

Concealed. Non-hold open feature. Econoflush with Ball O Stopinch control inlet, palm press pushbutton assembly with pushrod and captive linkage and straight urinal tail pipe. 3/4inch BSP female iron connection end. Recommended optimum design pressures: inlet flow pressure 30 - 500kPa: Maximum system pressure 600kPa.

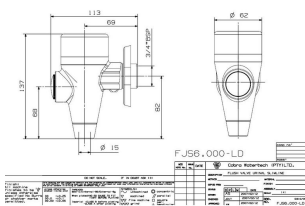
Range: [Flush Junior](#)



FJ6-000/N

FJ6-000

0 kg



Urinal flush valve

Exposed. Non-hold open feature. With Ball O Stopinch control inlet, wall flange, additional screw and piston for large bowl and stall urinals. 3/4inch BSP female iron connection end. Recommended optimum design pressures: inlet flow pressure 30 - 500kPa: Maximum system pressure 600kPa.

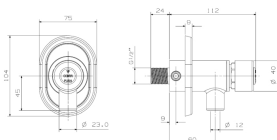
Range: [Flush Junior](#)



KM6-000/N

KM6-000

0 kg



Metering urinal valve

Non hold open, self closing. 1/2inch BSP male iron connection end. Flow cycle 1-20 seconds.

Range: [Metering](#)



KM3-000/N

KM3-000

0 kg

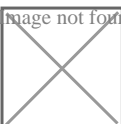
Delayed action urinal valve

Delayed action urinal valve. Wall flange and flush pipe.

Range: [Cobra](#)

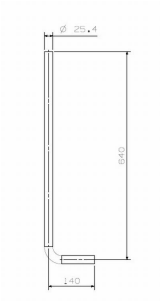


Image not found or type unknown





TOILET FLUSH PIPES



FJT1-1/N

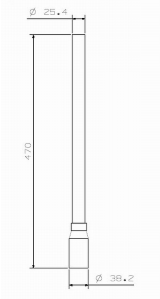
FJT1-1

0 kg

Toilet flush pipe

Bent, for junior flushmaster toilet flushvalves. 25.4mm diameter, 640mm vertical length, 140mm horizontal length.

Range: [Flush Junior](#)



FJT1-2/N

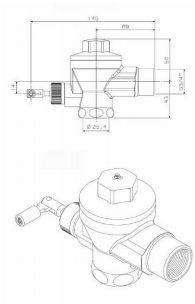
FJT1-2

0 kg

Toilet flush pipe

Straight, for junior flushmaster toilet flush valves. 25.4mm diameter inlet x 38.2mm outlet, 470mm long.

Range: [Flush Junior](#)



FJT1-5/N

FJT1-5

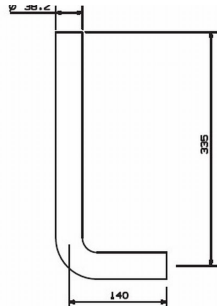
0 kg

Toilet flush pipe

Bent, for junior flushmaster toilet flushvalves. 25.4mm diameter, 610mm vertical length, 356mm horizontal length.

Range: [Flush Junior](#)





FMT1-1/N

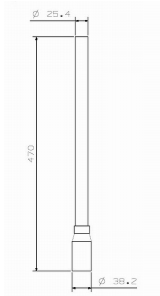
FMT1-1

0 kg

Toilet flush pipe

Bent, for standard flushmaster toilet flushvalves. 38.2mm diameter x 335mm vertical length, 140mm horizontal length.

Range: [Flush Master](#)



FMT1-2/N

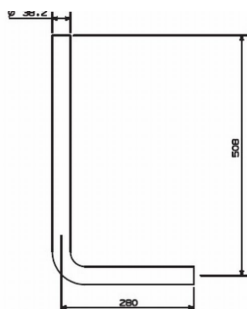
FMT1-2

0 kg

Toilet flush pipe

Straight, for standard flushmaster toilet flushvalves. 38.2mm diameter x 203mm long.

Range: [Flush Master](#)



FMT1-3/N

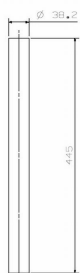
FMT1-3

0 kg

Toilet flush pipe

Bent, for standard flushmaster toilet flushvalves. 38.2mm diameter x 508mm vertical length, 280mm horizontal length.

Range: [Flush Master](#)



FMT3-4CP/N

FMT3-4CP

0 kg

Toilet flush pipe

Straight, for standard flushmaster toilet flushvalves. 38.2mm diameter x 445mm long.

Range: [Flush Master](#)





URINAL FLUSH PIPES



FJT5-1/N

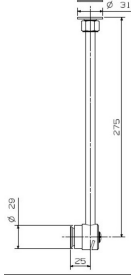
FJT5-1

0 kg

Urinal flush pipe

Straight, for junior flushmaster urinal flushvalves. 25.4mm diameter inlet x 22mm outlet, 228mm long.

Range: [Flush Junior](#)



FJT5-4/N

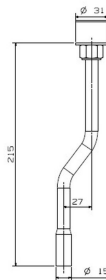
FJT5-4

0 kg

Urinal flush pipe

Straight, for Junior Flushmaster urinal flush valves with back mount spreader. 12mm diameter tube x 260mm long. Copper tube annealed enabling hand forming.

Range: [Flush Junior](#)



FJT5-5/N

FJT5-5

0 kg

Urinal flush pipe

Offset, for junior flushmaster urinal flushvalves. 25.4mm diameter inlet adaptor (to be checked), 15mm diameter outlet x 215mm long. 27mm centreline offset.

Range: [Flush Junior](#)





FLOAT VALVES

[703-20/N](#)

703-20

0 kg

Float valve

Econo float valve, 3/4inch , 319mm arm.

Range: [Cobra](#)



[710-20/N](#)

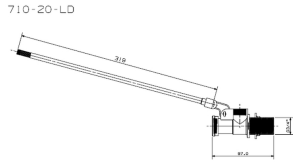
710-20

0 kg

Float valve

Low pressure. Two piece body MOH pattern. 319mm float arm. 32mm long inlet shank with backnut. Brass piston and 10mm diameter stainless steel seat. 3/4inch BSP male iron connection end.

Range: [Cobra](#)



[700SP/N](#)

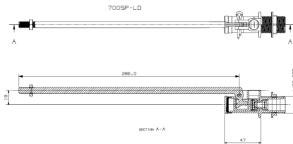
700SP

0 kg

Float valve

High pressure. Two piece body MOH pattern. 286mm float arm. 50mm long inlet shank with backnut. Brass piston and large bore nylon seat. 1/2inch BSP male iron connection end. Recommended float ball size 115mm diameter.

Range: [Cobra](#)



[701-15/N](#)

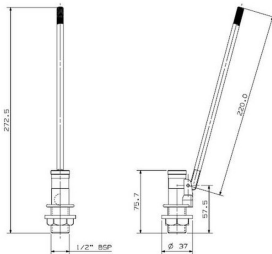
701-15

0 kg

Float valve

High pressure. Two piece body MOH pattern. 220mm float arm. 32mm long inlet shank with backnut. Nylon piston and 2.7mm diameter nylon seat. 1/2inch BSP male iron connection end.

Range: [Cobra](#)





COMPRESSION FITTINGS



PRODUCT CODE	DESCRIPTION
62XS-15	For 15mm pipe
62XS-22	For 22mm pipe

[62XS-15/N](#)

0 kg

62XS-15

(l)120mm x (w)0mm x (h)180mm

Pipe holder

For copper tube and Cobra-Safe multi layer pipe. For 15mm pipes and tubes.

Range: [Cobra](#)



PRODUCT CODE	DESCRIPTION
62XS-15	For 15mm pipe
62XS-22	For 22mm pipe

[62XS-22/N](#)

0 kg

62XS-22

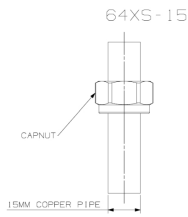
(l)150mm x (w)0mm x (h)250mm

Pipe holder

For copper tube and Cobra-Safe multi layer pipe. For 22mm pipes and tubes.

Range: [Cobra](#)





[64XS-15/25/N](#)

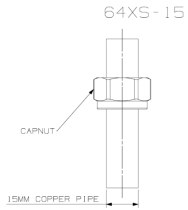
0 kg

Compression fitting
Compression nut. 15mm.
Range: [Compression](#)



64XS-15/25

(l)203mm x (w)0mm x (h)305mm



[64XS-15/500/N](#)

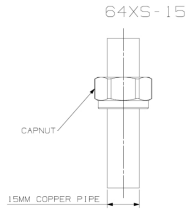
0 kg

Compression fitting
Compression nut. 15mm.
Range: [Compression](#)



64XS-15/500

(l)203mm x (w)0mm x (h)458mm



[64XS-15L/N](#)

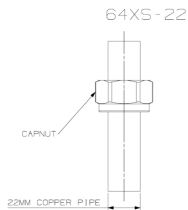
0 kg

Compression fitting
Compression nut. 15mm.
Range: [Compression](#)



64XS-15L

(l)80mm x (w)0mm x (h)100mm



[64XS-22/25/N](#)

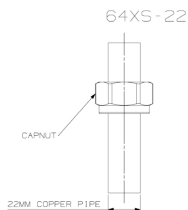
0 kg

Compression fitting
Compression nut. 22mm.
Range: [Compression](#)



64XS-22/25

(l)127mm x (w)0mm x (h)254mm



[64XS-22/250/N](#)

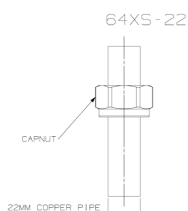
0 kg

Compression fitting
Compression nut. 22mm.
Range: [Compression](#)



64XS-22/250

(l)305mm x (w)0mm x (h)458mm



[64XS-22L/N](#)

0 kg

Compression fitting
Compression nut. 22mm.
Range: [Compression](#)

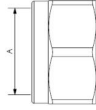


64XS-22L

(l)80mm x (w)0mm x (h)100mm



PRODUCT CODE	DESCRIPTION	A
64XS-15	Spare for 15mm compression pipe fittings	15
64XS-22	Spare for 22mm compression pipe fittings	22
64XS-28	Spare for 28mm compression pipe fittings	25
64XS-32	Spare for 32mm compression pipe fittings	32
64XS-40	Spare for 40mm compression pipe fittings	40
64XS-50	Spare for 50mm compression pipe fittings	50



64XS-28/N

64XS-28

0 kg

(l)80mm x (w)0mm x (h)100mm

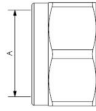
Compression fitting

Compression nut. 28mm.

Range: [Compression](#)



PRODUCT CODE	DESCRIPTION	A
64XS-15	Spare for 15mm compression pipe fittings	15
64XS-22	Spare for 22mm compression pipe fittings	22
64XS-28	Spare for 28mm compression pipe fittings	25
64XS-32	Spare for 32mm compression pipe fittings	32
64XS-40	Spare for 40mm compression pipe fittings	40
64XS-50	Spare for 50mm compression pipe fittings	50



64XS-35/N

64XS-35

0 kg

(l)80mm x (w)0mm x (h)100mm

Compression fitting

Compression nut. 35mm.

Range: [Compression](#)



64XS-42/N

64XS-42

0 kg

(l)100mm x (w)0mm x (h)150mm

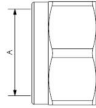
Compression fitting

Compression nut. 42mm.

Range: [Compression](#)



PRODUCT CODE	DESCRIPTION	A
64XS-15	Spare for 15mm compression pipe fittings	15
64XS-22	Spare for 22mm compression pipe fittings	22
64XS-28	Spare for 28mm compression pipe fittings	25
64XS-32	Spare for 32mm compression pipe fittings	32
64XS-40	Spare for 40mm compression pipe fittings	40
64XS-50	Spare for 50mm compression pipe fittings	50



64XS-54/N

64XS-54

0 kg

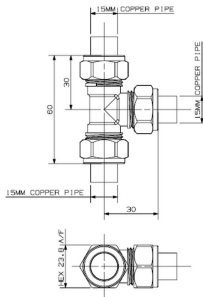
(l)120mm x (w)0mm x (h)180mm

Compression fitting

Compression nut. 54mm.

Range: [Compression](#)





D-12XS-15/N

0 kg

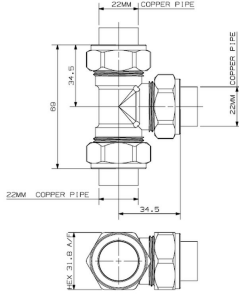
D-12XS-15

(l)100mm x (w)0mm x (h)150mm

Compression fitting

Tee. 15mm compression x 15mm compression x 15mm compression connection ends.

Range: [Compression](#)



D-12XS-22/N

0 kg

D-12XS-22

(l)100mm x (w)0mm x (h)150mm

Compression fitting

Tee. 22mm compression x 22mm compression x 22mm compression connection ends.

Range: [Compression](#)



D-12XS-28/N

0 kg

D-12XS-28

(l)120mm x (w)0mm x (h)180mm

Compression fitting

Tee. 28mm compression x 28mm compression x 28mm compression connection ends.

Range: [Compression](#)



D-12XS-35/N

0 kg

D-12XS-35

(l)120mm x (w)0mm x (h)180mm

Compression fitting

Tee. 35mm compression x 35mm compression x 35mm compression connection ends.

Range: [Compression](#)



D-12XS-42/N

0 kg

D-12XS-42

(l)150mm x (w)0mm x (h)250mm

Compression fitting

Tee. 42mm compression x 42mm compression x 42mm compression connection ends.

Range: [Compression](#)



D-12XS-54/N

0 kg

D-12XS-54

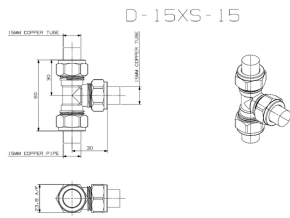
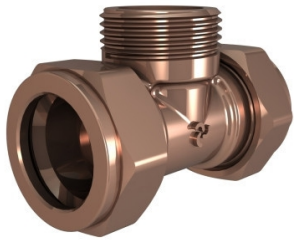
(l)150mm x (w)0mm x (h)250mm

Compression fitting

Tee. 54mm compression x 54mm compression x 54mm compression connection ends.

Range: [Compression](#)





D-15XS-15/N

0 kg

D-15XS-15

(l)80mm x (w)0mm x (h)100mm

Compression fitting

Tee. 15mm compression x 15mm compression x 1/2inch BSP male iron connection ends.

Range: [Compression](#)



D-15XS-22/N

0 kg

D-15XS-22

(l)100mm x (w)0mm x (h)150mm

Compression fitting

Tee. 22mm compression x 22mm compression x 3/4inch BSP male iron connection ends.

Range: [Compression](#)



D-17RXS22X1/2/N

0 kg

D-17RXS22X1/2

(l)100mm x (w)0mm x (h)150mm

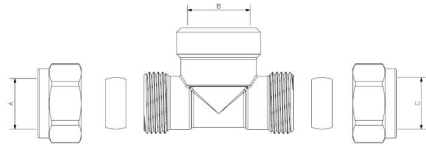
Compression fitting

Reducing tee. 22mm compression x 22mm compression x 1/2inch BSP female iron connection ends.

Range: [Compression](#)



PRODUCT CODE	DESCRIPTION	A	B	C
D-17XS-15	15mm copper x 15mm copper x 1/2" Female connections	15	1/2	15
D-17XS-22	22mm copper x 22mm copper x 3/4" Female connections	22	3/4	22



D-17XS-15/N

0 kg

D-17XS-15

(l)80mm x (w)0mm x (h)100mm

Compression fitting

Tee. 15mm compression x 15mm compression x 1/2inch BSP female iron connection ends.

Range: [Compression](#)



D-17XS-22/N

0 kg

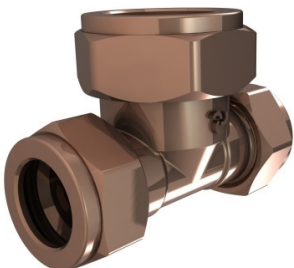
D-17XS-22

(l)100mm x (w)0mm x (h)150mm

Compression fitting

Tee. 22mm compression x 22mm compression x 3/4inch BSP female iron connection ends.

Range: [Compression](#)



D-279XS-15X22/N

0 kg

D-279XS-15X22

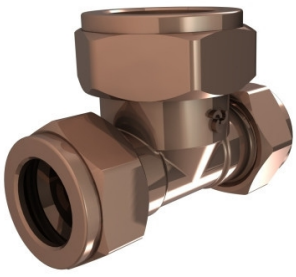
(l)80mm x (w)0mm x (h)100mm

Compression fitting

Reducing tee. 15mm compression x 15mm compression x 22mm compression connection ends.

Range: [Compression](#)





[D-279XS-22X28/N](#)

D-279XS-22X28

0 kg

(l)100mm x (w)0mm x (h)150mm

Compression fitting

Reducing tee. 22mm compression x 22mm compression x 28mm compression connection ends.

Range: [Compression](#)



[D-280XS-22X15/N](#)

D-280XS-22X15

0 kg

(l)80mm x (w)0mm x (h)100mm

Compression fitting

Reducing tee. 22mm compression x 22mm compression x 15mm compression connection ends.

Range: [Compression](#)



[D-29XS-15/N](#)

D-29XS-15

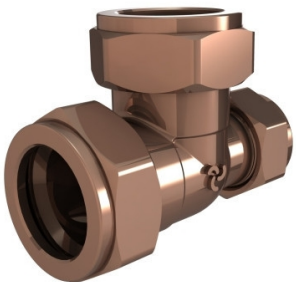
0 kg

(l)100mm x (w)0mm x (h)150mm

Compression fitting

Wallplate tee. 15mm compression x 15mm compression x 1/2inch BSP female iron connection ends.

Range: [Compression](#)



[D-79XS-22X15/N](#)

D-79XS-22X15

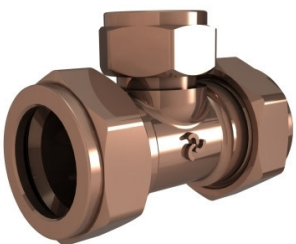
0 kg

(l)100mm x (w)0mm x (h)150mm

Compression fitting

Reducing tee. 22mm compression x 15mm compression x 22mm compression connection ends.

Range: [Compression](#)



[D-80XS-22X15/N](#)

D-80XS-22X15

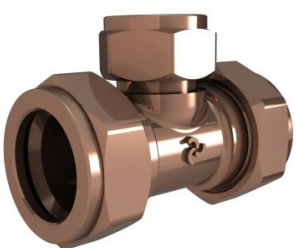
0 kg

(l)100mm x (w)0mm x (h)150mm

Compression fitting

Reducing tee. 22mm compression x 22mm compression x 15mm compression connection ends.

Range: [Compression](#)



[D-80XS-28X22/N](#)

D-80XS-28X22

0 kg

(l)100mm x (w)0mm x (h)150mm

Compression fitting

Reducing tee. 28mm compression x 28mm compression x 22mm compression connection ends.

Range: [Compression](#)





[D-23XS-15/N](#)

D-23XS-15

0 kg

(l)100mm x (w)0mm x (h)150mm

Compression fitting

Stop end. 15mm compression connection end.

Range: [Compression](#)



[D-23XS-22/N](#)

D-23XS-22

0 kg

(l)100mm x (w)0mm x (h)150mm

Compression fitting

Stop end. 22mm compression connection end.

Range: [Compression](#)



[D-23XS-28/N](#)

D-23XS-28

0 kg

(l)120mm x (w)0mm x (h)180mm

Compression fitting

Stop end. 28mm compression connection end.

Range: [Compression](#)





[D-65XS-15/10/N](#)

0 kg

Compression fitting

Compression ring. 15mm.

Range: [Compression](#)



D-65XS-15/10

(l)203mm x (w)0mm x (h)305mm



[D-65XS-15/1000/N](#)

0 kg

Compression fitting

Compression ring. 15mm.

Range: [Compression](#)



D-65XS-15/1000

(l)305mm x (w)0mm x (h)458mm



[D-65XS-15/3000/N](#)

0 kg

Compression fitting

Compression ring. 15mm.

Range: [Compression](#)



D-65XS-15/3000

(l)305mm x (w)0mm x (h)458mm



[D-65XS-15L/N](#)

0 kg

Compression fitting

Compression ring. 15mm. Individually packaged.

Range: [Compression](#)



D-65XS-15L

(l)203mm x (w)0mm x (h)305mm



[D-65XS-22/10/N](#)

0 kg

Compression fitting

Compression ring. 22mm.

Range: [Compression](#)



D-65XS-22/10

(l)203mm x (w)0mm x (h)305mm



[D-65XS-22/1500/N](#)

0 kg

Compression fitting

Compression ring. 22mm.

Range: [Compression](#)



D-65XS-22/1500

(l)305mm x (w)0mm x (h)458mm



[D-65XS-22L/N](#)

D-65XS-22L

0 kg

(l)203mm x (w)0mm x (h)305mm

Compression fitting

Compression ring. 22mm. Individually packaged.

Range: [Compression](#)



[D-65XS-28/N](#)

D-65XS-28

0 kg

(l)80mm x (w)0mm x (h)100mm

Compression fitting

Compression ring. 28mm.

Range: [Compression](#)



[D-65XS-35/N](#)

D-65XS-35

0 kg

(l)80mm x (w)0mm x (h)100mm

Compression fitting

Compression ring. 35mm.

Range: [Compression](#)



[D-65XS-42/N](#)

D-65XS-42

0 kg

(l)80mm x (w)0mm x (h)100mm

Compression fitting

Compression ring. 42mm.

Range: [Compression](#)



[D-65XS-54/N](#)

D-65XS-54

0 kg

(l)80mm x (w)0mm x (h)100mm

Compression fitting

Compression ring. 54mm.

Range: [Compression](#)





[D-268XS-28X15/N](#)

0 kg

D-268XS-28X15

(l)80mm x (w)0mm x (h)100mm

Compression fitting

Multi step reducer. For adapting a fitting. 28mm compression x 15mm compression connection ends.

Range: [Compression](#)



[D-268XS-35X22/N](#)

0 kg

D-268XS-35X22

(l)80mm x (w)0mm x (h)100mm

Compression fitting

Multi step reducer. For adapting a fitting. 35mm compression x 22mm compression connection ends.

Range: [Compression](#)



[D-268XS-42X22/N](#)

0 kg

D-268XS-42X22

(l)100mm x (w)0mm x (h)150mm

Compression fitting

Multi step reducer. For adapting a fitting. 42mm compression x 22mm compression connection ends.

Range: [Compression](#)



[D-268XS-42X28/N](#)

0 kg

D-268XS-42X28

(l)100mm x (w)0mm x (h)150mm

Compression fitting

Multi step reducer. For adapting a fitting. 42mm compression x 28mm compression connection ends.

Range: [Compression](#)



[D-268XS-54X22/N](#)

0 kg

D-268XS-54X22

(l)120mm x (w)0mm x (h)180mm

Compression fitting

Multi step reducer. For adapting a fitting. 54mm compression x 22mm compression connection ends.

Range: [Compression](#)



[D-268XS-54X28/N](#)

0 kg

D-268XS-54X28

(l)120mm x (w)0mm x (h)180mm

Compression fitting

Multi step reducer. For adapting a fitting. 54mm compression x 28mm compression connection ends.

Range: [Compression](#)





[D-268XS-54X35/N](#)

D-268XS-54X35

0 kg

(l)150mm x (w)0mm x (h)250mm

Compression fitting

Multi step reducer. For adapting a fitting. 54mm compression x 35mm compression connection ends.

Range: [Compression](#)



[D-68XS-22X15/N](#)

D-68XS-22X15

0 kg

(l)80mm x (w)0mm x (h)100mm

Compression fitting

Single step reducer. For adapting a fitting. 22mm compression x 15mm compression connection ends.

Range: [Compression](#)



[D-68XS-28X22/N](#)

D-68XS-28X22

0 kg

(l)80mm x (w)0mm x (h)100mm

Compression fitting

Single step reducer. For adapting a fitting. 28mm compression x 22mm compression connection ends.

Range: [Compression](#)



[D-68XS-35X28/N](#)

D-68XS-35X28

0 kg

(l)80mm x (w)0mm x (h)100mm

Compression fitting

Single step reducer. For adapting a fitting. 35mm compression x 28mm compression connection ends.

Range: [Compression](#)



[D-68XS-42X35/N](#)

D-68XS-42X35

0 kg

(l)80mm x (w)0mm x (h)100mm

Compression fitting

Single step reducer. For adapting a fitting. 42mm compression x 35mm compression connection ends.

Range: [Compression](#)



[D-68XS-54X42/N](#)

D-68XS-54X42

0 kg

(l)150mm x (w)0mm x (h)250mm

Compression fitting

Single step reducer. For adapting a fitting. 54mm compression x 42mm compression connection ends.

Range: [Compression](#)





D-10RXS3/4X15/N

0 kg

D-10RXS3/4X15

(l)80mm x (w)0mm x (h)100mm

Compression fitting

Reducing elbow. 3/4inch BSP female iron x 15mm compression connection ends.

Range: [Compression](#)



D-10XS-15/N

0 kg

D-10XS-15

(l)80mm x (w)0mm x (h)100mm

Compression fitting

Elbow. 15mm compression x 1/2inch BSP female iron connection ends.

Range: [Compression](#)



D-10XS-22/N

0 kg

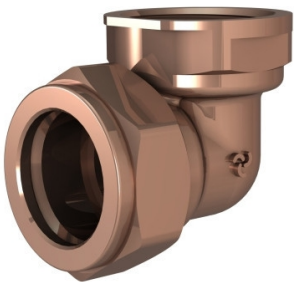
D-10XS-22

(l)100mm x (w)0mm x (h)150mm

Compression fitting

Elbow. 22mm compression x 3/4inch BSP female iron connection ends.

Range: [Compression](#)



D-10XS-28/N

0 kg

D-10XS-28

(l)100mm x (w)0mm x (h)150mm

Compression fitting

Elbow. 28mm compression x 1inch BSP female iron connection ends.

Range: [Compression](#)



D-10XS-35

D-10XS-35/N

0 kg

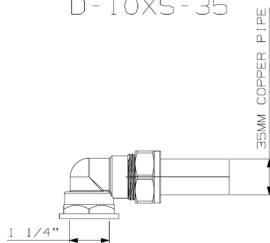
D-10XS-35

(l)120mm x (w)0mm x (h)180mm

Compression fitting

Elbow. 35mm compression x 1 1/4inch BSP female iron connection ends.

Range: [Compression](#)



D-10XS-42

D-10XS-42/N

0 kg

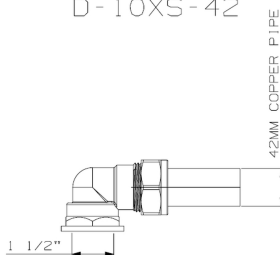
D-10XS-42

(l)150mm x (w)0mm x (h)250mm

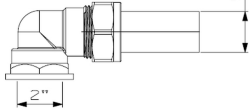
Compression fitting

Elbow. 42mm compression x 1 1/2inch BSP female iron connection ends.

Range: [Compression](#)



D-10XS-54



[D-10XS-54/N](#)

0 kg

Compression fitting

Elbow. 54mm compression x 2inch BSP female iron connection ends.

Range: [Compression](#)



D-10XS-54

(l)150mm x (w)0mm x (h)250mm



[D-33XS-15/N](#)

0 kg

Compression fitting

Wallplate elbow. 15mm compression x 1/2inch BSP female iron connection ends.

Range: [Compression](#)



D-33XS-15

(l)100mm x (w)0mm x (h)150mm



[D-33XS-22/N](#)

0 kg

Compression fitting

Wallplate elbow. 22mm compression x 3/4inch BSP female iron connection ends.

Range: [Compression](#)



D-33XS-22

(l)100mm x (w)0mm x (h)150mm



[D-37XS-15/N](#)

0 kg

Compression fitting

Swivel elbow. With fibre washer. 15mm compression x 1/2inch BSP female iron connection ends.

Range: [Compression](#)



D-37XS-15

(l)80mm x (w)0mm x (h)100mm



[D-4RXS-22X15/N](#)

0 kg

Compression fitting

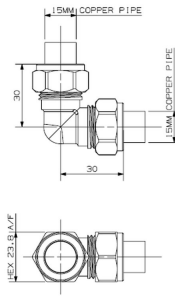
Reducing elbow. 22mm compression x 15mm compression connection ends.

Range: [Compression](#)



D-4RXS-22X15

(l)100mm x (w)0mm x (h)150mm



[D-4XS-15/N](#)

0 kg

Compression fitting

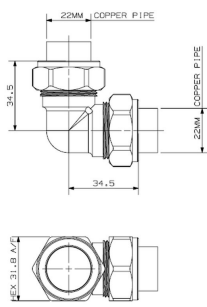
Elbow. 15mm compression x 15mm compression connection ends.

Range: [Compression](#)



D-4XS-15

(l)100mm x (w)0mm x (h)150mm



[D-4XS-22/N](#)

0 kg

D-4XS-22

(l)100mm x (w)0mm x (h)150mm

Compression fitting

Elbow. 22mm compression x 22mm compression connection ends.

Range: [Compression](#)



[D-4XS-28/N](#)

0 kg

D-4XS-28

(l)100mm x (w)0mm x (h)150mm

Compression fitting

Elbow. 28mm compression x 28mm compression connection ends.

Range: [Compression](#)



[D-4XS-35/N](#)

0 kg

D-4XS-35

(l)120mm x (w)0mm x (h)180mm

Compression fitting

Elbow. 35mm compression x 35mm compression connection ends.

Range: [Compression](#)



[D-4XS-42/N](#)

0 kg

D-4XS-42

(l)120mm x (w)0mm x (h)180mm

Compression fitting

Elbow. 42mm compression x 42mm compression connection ends.

Range: [Compression](#)



[D-4XS-54/N](#)

0 kg

D-4XS-54

(l)150mm x (w)0mm x (h)250mm

Compression fitting

Elbow. 54mm compression x 54mm compression connection ends.

Range: [Compression](#)



[D-8RXL-3/4X15/N](#)

0 kg

D-8RXL-3/4X15

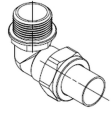
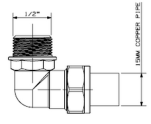
(l)80mm x (w)0mm x (h)100mm

Compression fitting

Reducing elbow. 15mm compression x 3/4inch BSP male iron connection ends.

Range: [Compression](#)





D-8XS-15/N

0 kg

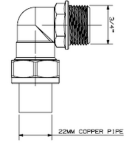
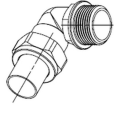
D-8XS-15

(l)100mm x (w)0mm x (h)150mm

Compression fitting

Elbow. 15mm compression x 1/2inch BSP male iron connection ends.

Range: [Compression](#)



D-8XS-22/N

0 kg

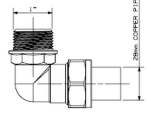
D-8XS-22

(l)100mm x (w)0mm x (h)150mm

Compression fitting

Elbow. 22mm compression x 3/4inch BSP male iron connection ends.

Range: [Compression](#)



D-8XS-28/N

0 kg

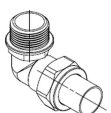
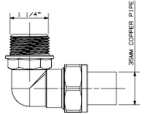
D-8XS-28

(l)100mm x (w)0mm x (h)150mm

Compression fitting

Elbow. 28mm compression x 1inch BSP male iron connection ends.

Range: [Compression](#)



D-8XS-35/N

0 kg

D-8XS-35

(l)100mm x (w)0mm x (h)150mm

Compression fitting

Elbow. 35mm compression x 1 1/4inch BSP male iron connection ends.

Range: [Compression](#)



D-8XS-42/N

0 kg

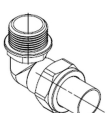
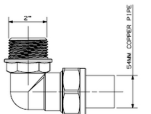
D-8XS-42

(l)120mm x (w)0mm x (h)180mm

Compression fitting

Elbow. 42mm compression x 1 1/2inch BSP male iron connection ends.

Range: [Compression](#)



D-8XS-54/N

0 kg

D-8XS-54

(l)150mm x (w)0mm x (h)250mm

Compression fitting

Elbow. 54mm compression x 2inch BSP male iron connection ends.

Range: [Compression](#)





[D-1RXS-22X15/N](#)

0 kg

D-1RXS-22X15

(l)80mm x (w)0mm x (h)100mm

Compression fitting

Reducing straight coupler. 22mm compression x 15mm compression connection ends.

Range: [Compression](#)



[D-1RXS-28X22/N](#)

0 kg

D-1RXS-28X22

(l)100mm x (w)0mm x (h)150mm

Compression fitting

Reducing straight coupler. 28mm compression x 22mm compression connection ends.

Range: [Compression](#)



[D-1XL-15S/C/N](#)

0 kg

D-1XL-15S/C

(l)80mm x (w)0mm x (h)100mm

Compression fitting

Slip coupler. 15mm compression x 15mm compression connection ends.

Range: [Compression](#)



[D-1XL-22S/C/N](#)

0 kg

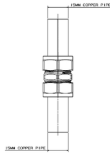
D-1XL-22S/C

(l)80mm x (w)0mm x (h)100mm

Compression fitting

Slip coupler. 22mm compression x 22mm compression connection ends.

Range: [Compression](#)



[D-1XS-15/N](#)

0 kg

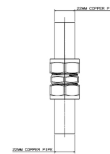
D-1XS-15

(l)80mm x (w)0mm x (h)100mm

Compression fitting

Straight coupler. 15mm compression x 15mm compression connection ends.

Range: [Compression](#)



[D-1XS-22/N](#)

0 kg

D-1XS-22

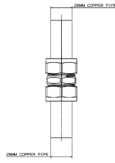
(l)80mm x (w)0mm x (h)100mm

Compression fitting

Straight coupler. 22mm compression x 22mm compression connection ends.

Range: [Compression](#)





[D-1XS-28/N](#)

0 kg

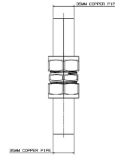
D-1XS-28

(l)100mm x (w)0mm x (h)150mm

Compression fitting

Straight coupler. 28mm compression x 28mm compression connection ends.

Range: [Compression](#)



[D-1XS-35/N](#)

0 kg

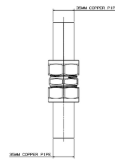
D-1XS-35

(l)100mm x (w)0mm x (h)150mm

Compression fitting

Straight coupler. 35mm compression x 35mm compression connection ends.

Range: [Compression](#)



[D-1XS-42/N](#)

0 kg

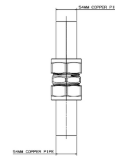
D-1XS-42

(l)120mm x (w)0mm x (h)180mm

Compression fitting

Straight coupler. 42mm compression x 42mm compression connection ends.

Range: [Compression](#)



[D-1XS-54/N](#)

0 kg

D-1XS-54

(l)150mm x (w)0mm x (h)250mm

Compression fitting

Straight coupler. 54mm compression x 54mm compression connection ends.

Range: [Compression](#)



[D-2RXS-1X22/N](#)

0 kg

D-2RXS-1X22

(l)80mm x (w)0mm x (h)100mm

Compression fitting

Reducing straight coupler. 22mm compression x 1inch BSP male iron connection ends.

Range: [Compression](#)



[D-2RXS-3/4X15/N](#)

0 kg

D-2RXS-3/4X15

(l)100mm x (w)0mm x (h)150mm

Compression fitting

Reducing straight coupler. 15mm compression x 3/4inch BSP male iron connection ends.

Range: [Compression](#)





[D-2XS-15/N](#)

0 kg

D-2XS-15

(l)100mm x (w)0mm x (h)150mm

Compression fitting

Straight coupler. 15mm compression x 1/2inch BSP male iron connection ends.

Range: [Compression](#)



[D-2XS-22/N](#)

0 kg

D-2XS-22

(l)100mm x (w)0mm x (h)150mm

Compression fitting

Straight coupler. 22mm compression x 3/4inch BSP male iron connection ends.

Range: [Compression](#)



[D-2XS-28/N](#)

0 kg

D-2XS-28

(l)100mm x (w)0mm x (h)150mm

Compression fitting

Straight coupler. 28mm compression x 1inch BSP male iron connection ends.

Range: [Compression](#)



[D-2XS-35/N](#)

0 kg

D-2XS-35

(l)100mm x (w)0mm x (h)150mm

Compression fitting

Straight coupler. 35mm compression x 1 1/4inch BSP male iron connection ends.

Range: [Compression](#)



[D-2XS-42/N](#)

0 kg

D-2XS-42

(l)120mm x (w)0mm x (h)180mm

Compression fitting

Straight coupler. 42mm compression x 1 1/2inch BSP male iron connection ends.

Range: [Compression](#)



[D-2XS-54/N](#)

0 kg

D-2XS-54

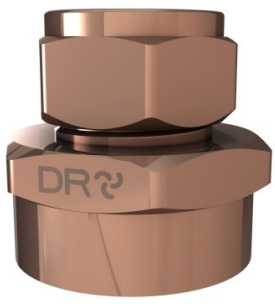
(l)150mm x (w)0mm x (h)250mm

Compression fitting

Straight coupler. 54mm compression x 2inch BSP male iron connection ends.

Range: [Compression](#)





D-3RXS-3/4X15/N

0 kg

D-3RXS-3/4X15

(l)100mm x (w)0mm x (h)150mm

Compression fitting

Reducing straight coupler. 15mm compression x 3/4inch BSP female iron connection ends.

Range: [Compression](#)



D-3XS-15/N

0 kg

D-3XS-15

(l)100mm x (w)0mm x (h)150mm

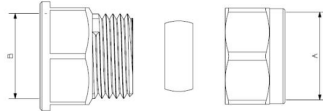
Compression fitting

Straight coupler. 15mm compression x 1/2inch BSP female iron connection ends.

Range: [Compression](#)



PRODUCT CODE	DESCRIPTION	A	B
D-3XS-15	15mm copper x 1/2" female connections	15	1/2"
D-3XS-22	22mm copper x 3/4" female connections	22	3/4"
D-3XS-28	28mm copper x 1" female connections	28	1"
D-3XS-35	35mm copper x 1 1/4" female connections	35	1 1/4"
D-3XS-42	42mm copper x 1 1/2" female connections	42	1 1/2"
D-3XS-54	54mm copper x 2" female connections	54	2"



D-3XS-22/N

0 kg

D-3XS-22

(l)100mm x (w)0mm x (h)150mm

Compression fitting

Straight coupler. 22mm compression x 3/4inch BSP female iron connection ends.

Range: [Compression](#)



D-3XS-28/N

0 kg

D-3XS-28

(l)100mm x (w)0mm x (h)150mm

Compression fitting

Straight coupler. 28mm compression x 1inch BSP female iron connection ends.

Range: [Compression](#)



D-3XS-35/N

0 kg

D-3XS-35

(l)100mm x (w)0mm x (h)150mm

Compression fitting

Straight coupler. 35mm compression x 1 1/2inch BSP female iron connection ends.

Range: [Compression](#)



D-3XS-42/N

0 kg

D-3XS-42

(l)120mm x (w)0mm x (h)180mm

Compression fitting

Straight coupler. 42mm compression x 1 1/2inch BSP female iron connection ends.

Range: [Compression](#)





[D-3XS-54/N](#)

0 kg

D-3XS-54

(l)150mm x (w)0mm x (h)250mm

Compression fitting

Straight coupler. 54mm compression x 2inch BSP female iron connection ends.

Range: [Compression](#)





MEDICAL FITTINGS

503-21B/N

503-21B

0 kg

(l)305mm x (w)135mm x (h)55mm

Medical pillar tap

Elbow action. With 1/4 turn ceramic disc headpart, flanged backnut and blue indice for cold water application. 1/2inch BSP male iron connection end.

Range: [Medical](#)



503-21R/N

503-21R

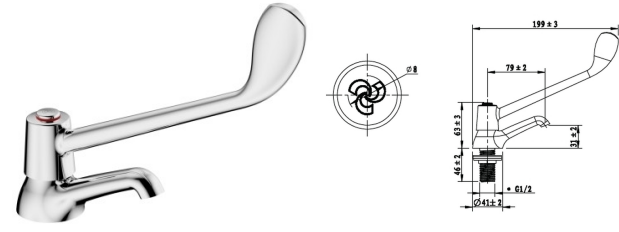
0 kg

(l)305mm x (w)135mm x (h)55mm

Medical pillar tap

Elbow action. With 1/4 turn ceramic disc headpart, flanged backnut and red indice for hot water application. 1/2inch BSP male iron connection end.

Range: [Medical](#)



507/N

507

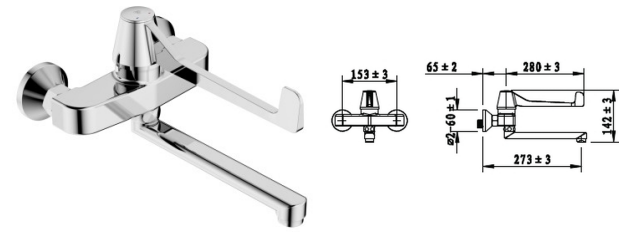
0 kg

(l)275mm x (w)200mm x (h)120mm

Medical mixer

Medical elbow-action, progressive control, wall-type mixer, chrome plated. Includes: 1/2inch BSP male inlets, aerated underarm swivel outlet (dry spout), and concealed s-connections with integral control stops. Ideal for medical, kitchen & industrial installations.

Range: [Medical](#)



515-21/N

515-21

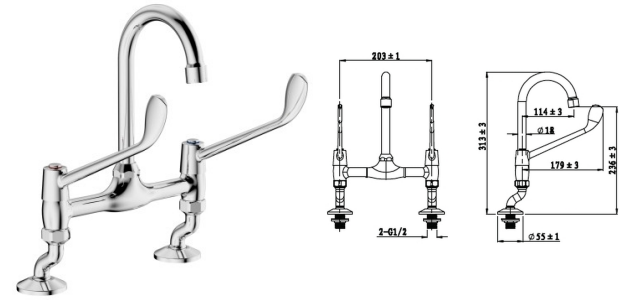
0 kg

(l)585mm x (w)205mm x (h)70mm

Medical mixer

Pillar type, elbow action. With 1/4 turn ceramic disc headparts, adjustable inlet connections with wall flanges. Swan neck aerated swivel outlet. 1/2inch BSP male iron connection ends.

Range: [Medical](#)



521-21/N

521-21

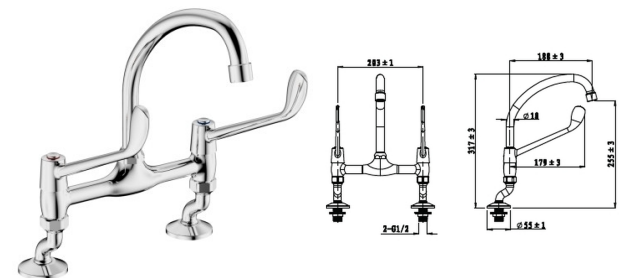
0 kg

(l)585mm x (w)205mm x (h)70mm

Medical mixer

Pillar type, elbow action. With 1/4 turn ceramic disc headparts, adjustable inlet connections with wall flanges. Aerated swivel outlet. 1/2inch BSP male iron connection ends.

Range: [Medical](#)



[500-21B/N](#)

500-21B

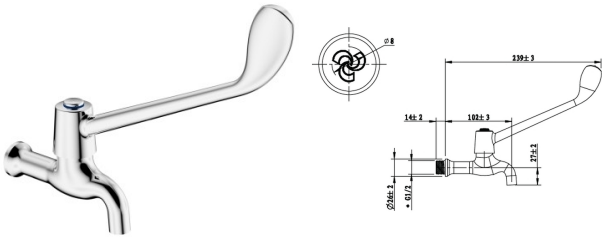
0 kg

(l)305mm x (w)135mm x (h)55mm

Medical bib tap

Elbow action. With 1/4 turn ceramic disc headpart and blue indice for cold water application.
1/2inch BSP male iron connection end.

Range: [Medical](#)



[500-21R/N](#)

500-21R

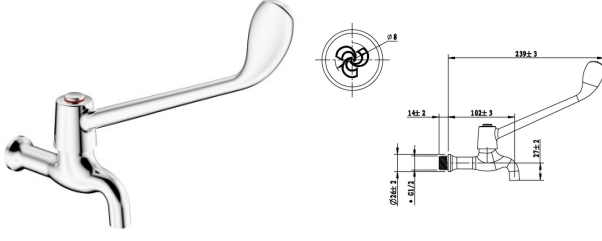
0 kg

(l)305mm x (w)135mm x (h)55mm

Medical bib tap

Elbow action. With 1/4 turn ceramic disc headpart and red indice for hot water application.
1/2inch BSP male iron connection end.

Range: [Medical](#)





ELECTRONIC FITTINGS

EL-1015-WAVE

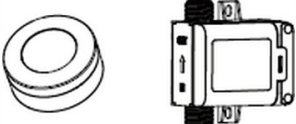
EL-1015-WAVE

0 kg

Stop tap

Concealed type. Touch free. Single temperature, cold or blended water. With transformer box and solenoid valve. 1/2 inch BSP female connection end.

Range: [Cobratron](#)



EL-1002

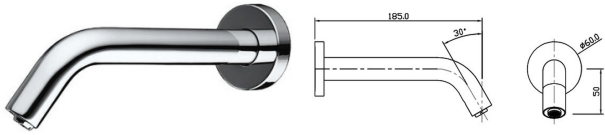
EL-1002

0 kg

Spout

Wall type. Touch free. Single temperature, cold or blended water. Requires 6 x AA penlight batteries, batteries not included. 1/2 inch BSP female connection end.

Range: [Cobratron](#)



EL-1002-C

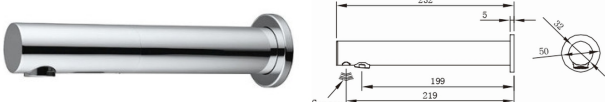
EL-1002-C

0 kg

Spout

Wall type. Touch free. Single temperature, cold or blended water. With transformer. 1/2 inch BSP female connection end.

Range: [Cobratron](#)



EL-1002-LED

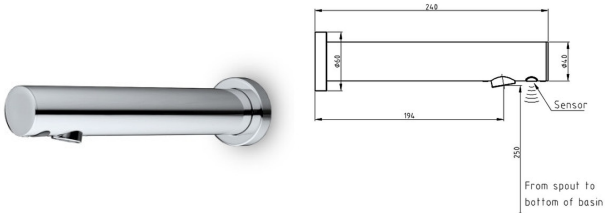
EL-1002-LED

0 kg

Spout

Wall type. Touch control with LED light. For metering stop tap. With transformer. 1/2 inch BSP female connection end.

Range: [Cobratron](#)



EL-1000

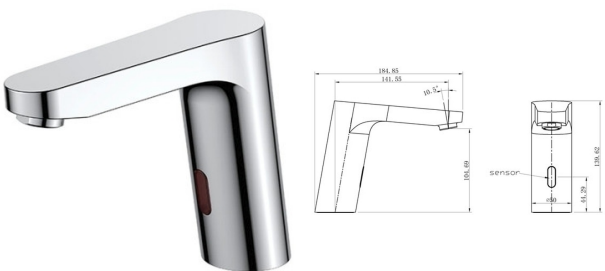
EL-1000

0 kg

Basin tap

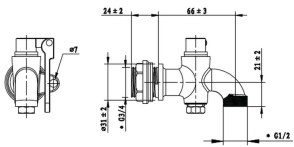
Pillar type. Touch free. Single temperature, cold or blended water. Requires 6 x AA penlight batteries, batteries not included. 1/2 inch BSP female connection end.

Range: [Cobratron](#)





PUBLIC TAPS & MIXERS



541-20/N

0 kg

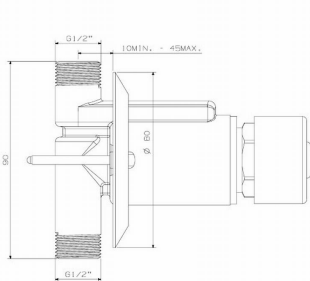
541-20

(l)150mm x (w)120mm x (h)65mm

Tank locking cock

With lugged lockable brass lever, backnut and rubber sealing washer. 3/4inch BSP male iron connection end.

Range: [Cobra](#)



[KM2-301/N](#)

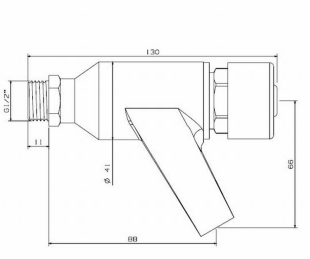
0 kg

KM2-301

Metering stop tap

Non hold open, self closing. With stainless steel wall flange. 1/2inch BSP male iron connection ends. Flow cycle 1-20 seconds.

Range: [Cobra](#)



[KM2-200/N](#)

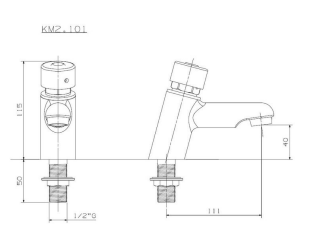
0 kg

KM2-200

Metering bib tap

Non hold open, self closing. 1/2inch BSP male iron connection end. Flow cycle 1-20 seconds.

Range: [Cobra](#)



[KM2-101/N](#)

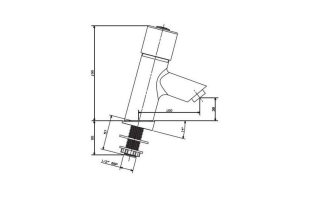
0 kg

KM2-101

Metering pillar tap

Non hold open, self closing. 1/2inch BSP male iron connection end. Flow cycle 1-20 seconds.

Range: [Cobra](#)



[KM2-100FS/N](#)

0 kg

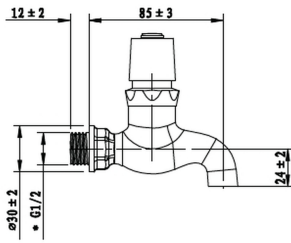
KM2-100FS

Metering pillar tap

Non hold open, self closing. 1/2inch BSP male iron connection end. Flow cycle 1-20 seconds.

Range: [Cobra](#)





KM2-203-15/N

0 kg

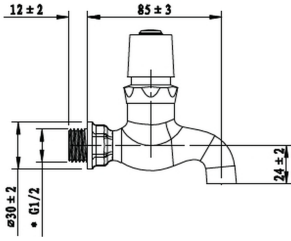
KM2-203-15

(l)150mm x (w)120mm x (h)65mm

Demand bib tap

Demand bib tap, rough brass. Includes: pushbutton, hot and cold indices, and 1/2inch BSP male inlet. An excellent water-saving product. SANS 1808-66.

Range: [Cobra](#)



KM2-202-15/N

0 kg

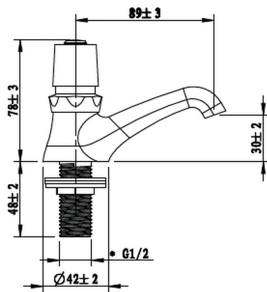
KM2-202-15

(l)150mm x (w)120mm x (h)65mm

Demand bib tap

Demand bib tap, chrome plated. Includes: pushbutton, hot and cold indices, and 1/2inch BSP male inlet. An excellent water-saving product. SANS 1808-66.

Range: [Cobra](#)



KM2-102/N

0 kg

KM2-102

(l)150mm x (w)120mm x (h)65mm

Demand pillar tap

Demand pillar tap, chrome. Includes: pushbutton, raised nose, hot and cold indices, 1/2inch BSP male inlet, and flanged backnut. An excellent water-saving product, and can be easily installed in place of conventional taps. SANS 1808-66.

Range: [Cobra](#)



KM2-302/N

0 kg

KM2-302

Demand stop tap

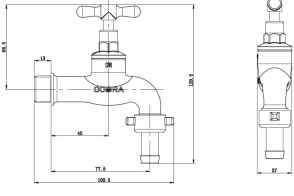
Demand exposed stop tap, chrome. Includes: pushbutton, and 1/2inch BSP female inlets. An excellent water-saving product, and can be easily installed in place of conventional taps. SANS 1808-66.

Range: [Cobra](#)





ROUGH BRASS TAPS



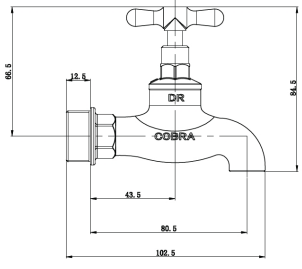
[200-15/N](#)
0 kg

200-15
(l)125mm x (w)142mm x (h)38mm

Bib tap standard

Plain bib tap. Light pattern type. 1/2inch BSP male iron connection end.

Range: [Standard Brass](#)



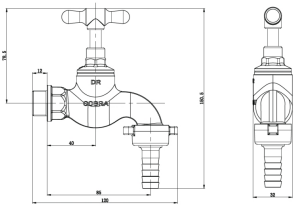
[200-20/N](#)
0 kg

200-20
(l)115mm x (w)120mm x (h)39mm

Bib tap standard

Plain bib tap. Heavy pattern low resistance type. 3/4inch BSP male iron connection end.

Range: [Standard Brass](#)



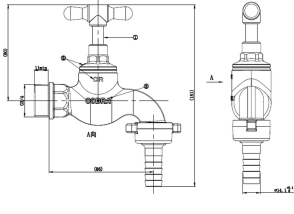
[108-15/N](#)
0 kg

108-15
(l)140mm x (w)167mm x (h)38mm

Hose bib tap

Hose bib tap. Heavy pattern low resistance type. With 3/4inch hose union, wingnut and lining for 1/2inch hose pipe. 1/2inch BSP male iron connection end.

Range: [Standard Brass](#)



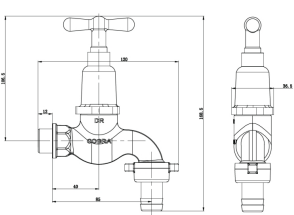
[108-20/N](#)
0 kg

108-20
(l)140mm x (w)167mm x (h)38mm

Hose bib tap

Hose bib tap. Heavy pattern low resistance type. With 3/4inch hose union, wingnut and lining for 1/2inch hose pipe. 3/4inch BSP male iron connection end.

Range: [Standard Brass](#)



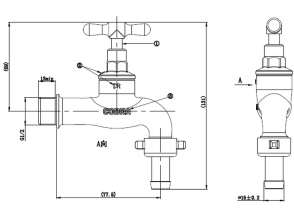
[108LK-15/N](#)
0 kg

108LK-15
(l)130mm x (w)190mm x (h)58mm

Hose bib tap lockable

Hose bib tap. Heavy pattern low resistance type. With loose key, 3/4inch hose union, wingnut and lining for 1/2inch hose pipe. 1/2inch BSP male iron connection end.

Range: [Standard Brass](#)



[208-15/N](#)
0 kg

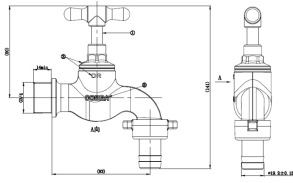
208-15
(l)125mm x (w)142mm x (h)38mm

Hose bib tap

Hose bib tap. Light pattern type. With 1/2inch hose union, wingnut and lining for 1/2inch hose pipe. 1/2inch BSP male iron connection end.

Range: [Standard Brass](#)





[208-20/N](#)

0 kg

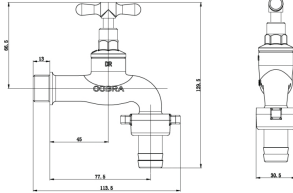
208-20

(l)140mm x (w)167mm x (h)38mm

Hose bib tap

Hose bib tap. Heavy pattern low resistance type. With 3/4inch hose union, wingnut and lining for 3/4inch hose pipe. 3/4inch BSP male iron connection end.

Range: [Standard Brass](#)



[209-15X3/4PL/N](#)

0 kg

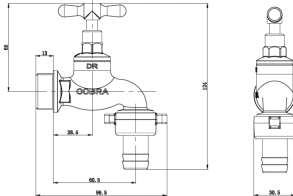
209-15X3/4PL

(l)125mm x (w)142mm x (h)38mm

Hose bib tap

Hose bib tap. Light pattern type. With 3/4inch hose union, wingnut and lining for 3/4inch hosepipe. 1/2inch BSP male iron connection end.

Range: [Standard Brass](#)



[209-20/N](#)

0 kg

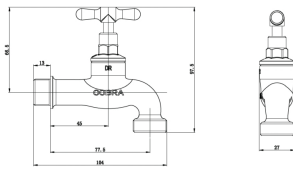
209-20

(l)125mm x (w)142mm x (h)38mm

Hose bib tap

Hose bib tap brass includes 3/4 inch hose union, wingnut, lining for 3/4 inch hose, and 3/4 inch BSP male inlet, dZR body.

Range: [Standard Brass](#)



[209/1-15X3/4/N](#)

0 kg

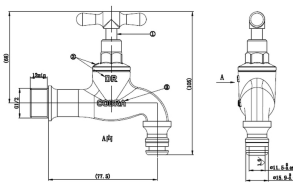
209/1-15X3/4

(l)115mm x (w)120mm x (h)39mm

Hose bib tap

Hose bib tap. Light pattern type. With 3/4inch hose union. 1/2inch BSP male iron connection end.

Range: [Standard Brass](#)



[209-15G/N](#)

0 kg

209-15G

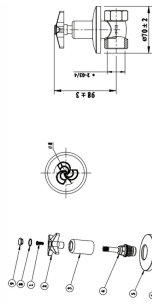
(l)115mm x (w)120mm x (h)39mm

Hose bib tap

Garden tap, brass. Includes: 3/4inch BSP hose union, 1/2inch BSP male iron connection end, spares head part complete S-28, and 1/2inch light pattern tap washer C-098-15. SANS 226 Type 2.

Range: [Standard Brass](#)





VC20-E/N

0 kg

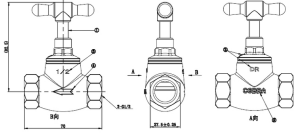
VC20-E

(l)125mm x (w)85mm x (h)80mm

Stop tap

Valve cock 20mm FxF light pattern.

Range: [Cobra](#)



121-15/N

0 kg

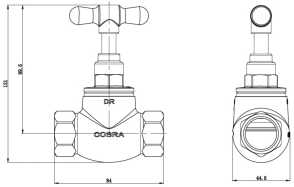
121-15

(l)83mm x (w)118mm x (h)39mm

Stop tap standard

Stoptap. Heavy pattern low resistance type. 1/2inch BSP female iron connection ends.

Range: [Standard Brass](#)



121-20/N

0 kg

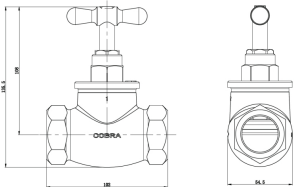
121-20

(l)120mm x (w)143mm x (h)59mm

Stop tap standard

Stoptap. Heavy pattern low resistance type. 3/4inch BSP female iron connection ends.

Range: [Standard Brass](#)



121-25/N

0 kg

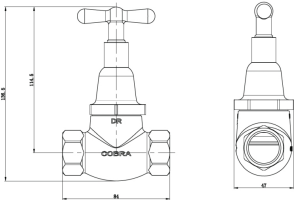
121-25

(l)120mm x (w)143mm x (h)59mm

Stop tap standard

Stoptap. Heavy pattern very low resistance type. 1inch BSP female iron connection ends.

Range: [Standard Brass](#)



121LK-20/N

0 kg

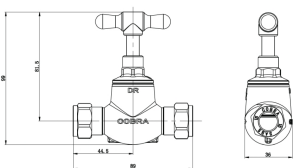
121LK-20

(l)94mm x (w)190mm x (h)58mm

Stop tap lockable

Stoptap. Heavy pattern low resistance type. With loose key. 3/4inch BSP female iron connection ends.

Range: [Standard Brass](#)



131-15/N

0 kg

131-15

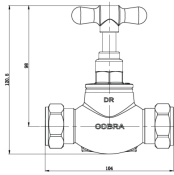
(l)115mm x (w)120mm x (h)39mm

Stop tap standard

Stoptap. Heavy pattern low resistance type. 15mm copper to copper compression connection ends.

Range: [Standard Brass](#)





[131-22/N](#)

0 kg

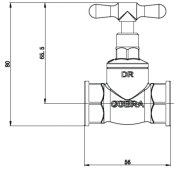
131-22

(l)120mm x (w)143mm x (h)59mm

Stop tap standard

Stoptap. Heavy pattern low resistance type. 22mm copper to copper compression connection ends.

Range: [Standard Brass](#)



[221-15/N](#)

0 kg

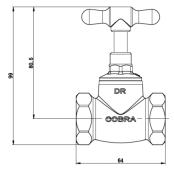
221-15

(l)83mm x (w)118mm x (h)39mm

Stop tap standard

Stoptap. Light pattern type. 1/2inch BSP male iron connection ends.

Range: [Standard Brass](#)



[221-20/N](#)

0 kg

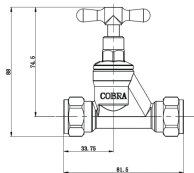
221-20

(l)83mm x (w)118mm x (h)39mm

Stop tap standard

Stoptap. Heavy pattern low resistance type. 3/4inch BSP female iron connection ends.

Range: [Standard Brass](#)



[231-15/N](#)

0 kg

231-15

(l)115mm x (w)120mm x (h)39mm

Stop tap standard

Stoptap. Light pattern type. 15mm copper to copper compression connection ends.

Range: [Standard Brass](#)





WASTES, TRAPS, & OVERFLOWS



373/N

0 kg

373

(l)145mm x (w)125mm x (h)85mm

P trap

Shower type. With shallow seal and Grating. 1 1/2inch BSP female iron outlet connections.

Round grating.

Range: [Cobra](#)



373SQ/N

0 kg

373SQ

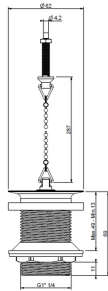
(l)145mm x (w)125mm x (h)85mm

P trap

Shower type. With shallow seal and Grating. 1 1/2inch BSP female iron outlet connections.

Square grating.

Range: [Cobra](#)



316/N

0 kg

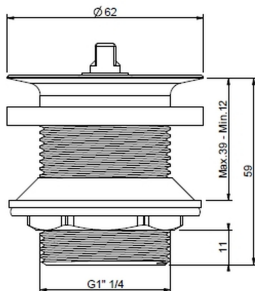
316

(l)72mm x (w)72mm x (h)100mm

Bath or sink waste

Unslotted. With flanged back nut and washer, plug with stirrup, chain and stay. 70mm u00efu00bfu00bd flange, 45mm long shank. 1 1/2inch BSP Male iron connection end.

Range: [Cobra](#)



317-40/N

0 kg

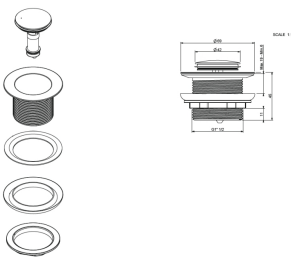
317-40

(l)72mm x (w)72mm x (h)85mm

Bath or sink waste

Unslotted. With flanged back nut and washer, plug with stirrup. 62mm u00efu00bfu00bd flange, 45mm long shank. 1 1/2inch BSP Male iron connection end.

Range: [Cobra](#)



318-40/N

0 kg

318-40

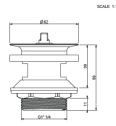
(l)72mm x (w)72mm x (h)85mm

Bath or sink waste

Click type. Unslotted, with integral plug. 70mm u00efu00bfu00bd flange, 40mm long shank. 1 1/2inch BSP Male iron connection end.

Range: [Cobra](#)





301/N

0 kg

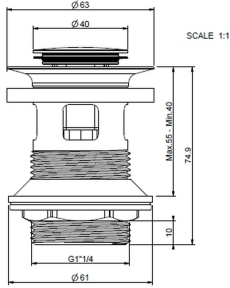
301

(l)72mm x (w)72mm x (h)100mm

Basin waste

Slotted. With flanged back nut and washer, plug with stirrup, chain and stay. 62mm u00efu00bfu00bd flange, 80mm long shank. 1 1/4inch BSP Male iron connection end.

Range: [Cobra](#)



302-32/N

0 kg

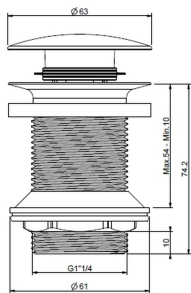
302-32

(l)72mm x (w)72mm x (h)100mm

Basin waste

Click type. Slotted, with integral plug. 62mm u00efu00bfu00bd flange, 80mm long shank. 1 1/4inch BSP Male iron connection end.

Range: [Cobra](#)



302-32NOSLOT/N

0 kg

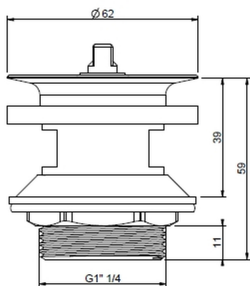
302-32NOSLOT

(l)72mm x (w)72mm x (h)100mm

Basin waste

Click type. Unslotted, with integral plug. 62mm u00efu00bfu00bd flange, 78mm long shank. 1 1/4inch BSP Male iron connection end.

Range: [Cobra](#)



303/N

0 kg

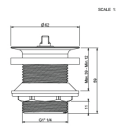
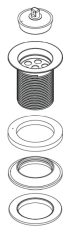
303

(l)72mm x (w)72mm x (h)85mm

Basin waste

Slotted. With flanged back nut and washer, and plug. 62mm u00efu00bfu00bd flange, 77mm long shank. 1 1/4inch BSP Male iron connection end.

Range: [Cobra](#)



308/N

0 kg

308

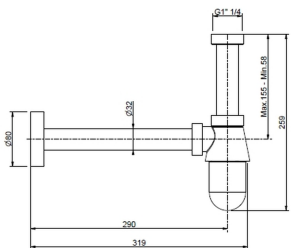
(l)72mm x (w)72mm x (h)100mm

Basin waste

Unslotted. With flanged back nut and washer, and plug. 62mm u00efu00bfu00bd flange, 77mm long shank. 1 1/4inch BSP Male iron connection end.

Range: [Cobra](#)





340/N

0 kg

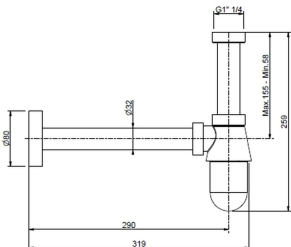
340

(l)265mm x (w)95mm x (h)95mm

Bottle trap

75mm deep seal type. With adjustable telescopic waste connection pipe. 1 1/4inch BSP female inlet connection. 1 1/4inch BSP male iron outlet connection. Brass body.

Range: [Cobra](#)



345/40/N

0 kg

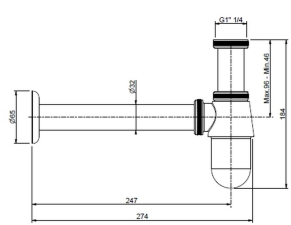
345/40

(l)265mm x (w)95mm x (h)95mm

Bottle trap

Basin type with 75mm deep seal type. With adjustable telescopic waste connection pipe. 1 1/4inch BSP female inlet connection. Outlet connection for 40mm PVC pipe. Brass body.

Range: [Cobra](#)



350/N

0 kg

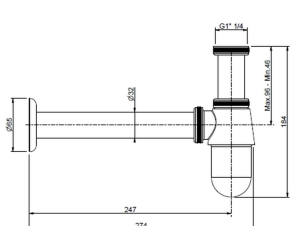
350

(l)265mm x (w)95mm x (h)95mm

Bottle trap

Basin type with 75mm deep seal type. With adjustable telescopic waste connection pipe. 1 1/4inch BSP female inlet connection. 1 1/2inch BSP male iron outlet connection. Brass body.

Range: [Cobra](#)



360/N

0 kg

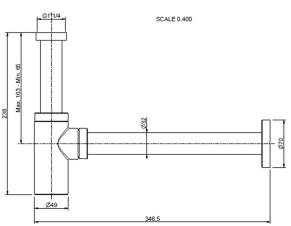
360

(l)265mm x (w)95mm x (h)95mm

Bottle trap

Basin type with 75mm deep seal type. With adjustable telescopic waste connection pipe. 1 1/2inch BSP female inlet connection. 1 1/2inch BSP male iron outlet connection. Brass body.

Range: [Cobra](#)



385/35/N

0 kg

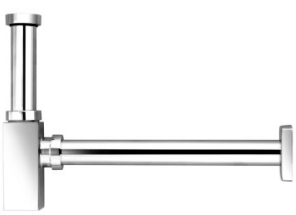
385/35

(l)335mm x (w)165mm x (h)70mm

Bottle trap

Re-sealable basin type. With adjustable telescopic waste connection pipe and polymer body. 1 1/4inch BSP female inlet connection. 35mm outlet connection with wall flange. Brass body.

Range: [Cobra](#)



385/35SQ/N

0 kg

385/35SQ

(l)335mm x (w)165mm x (h)70mm

Bottle trap

Re-sealable basin type. With adjustable telescopic waste connection pipe and polymer body. 1 1/4inch BSP female inlet connection. 35mm outlet connection with wall flange. Brass body.

Range: [Cobra](#)





[309-32/N](#)

309-32

0 kg

(l)72mm x (w)72mm x (h)85mm

Plug

Anti-theft. For 1 1/4inch (32mm) wastes with 72mm spindle.

Range: [Cobra](#)



[309-40/N](#)

309-40

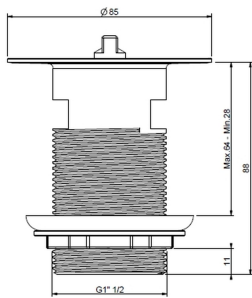
0 kg

(l)72mm x (w)72mm x (h)85mm

Plug

Anti-theft. For 1 1/2inch (40mm) wastes with 72mm spindle.

Range: [Cobra](#)



[310/N](#)

310

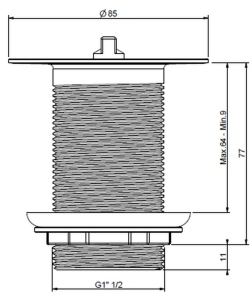
0 kg

(l)105mm x (w)95mm x (h)95mm

Sink waste

Slotted. With flanged back nut and washer, plug with stirrup. 86mm u00efu00bfu00bd flange, 80mm long shank. 1 1/2inch BSP Male iron connection end.

Range: [Cobra](#)



[311/N](#)

311

0 kg

(l)105mm x (w)95mm x (h)95mm

Sink waste

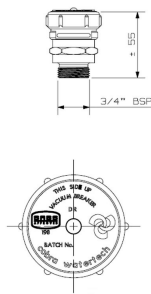
Unslotted. With flanged back nut and washer, plug with stirrup. 86mm u00efu00bfu00bd flange, 93mm long shank. 1 1/2inch BSP Male iron connection end.

Range: [Cobra](#)





GEYSER VALVES



P-PB1-10/N

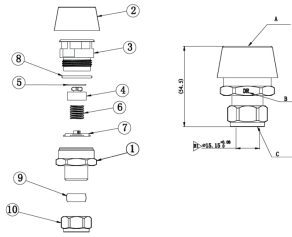
P-PB1-10

0 kg

Vacuum breaker

Vacubreak 1. Double jumper. 3/4inch BSP male iron connection end. Pre-pack presentation format.

Range: [Cobra](#)



P-PB6-301/N

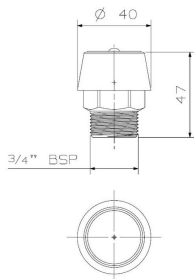
P-PB6-301

0 kg

Vacuum breaker

Vacubreak 3. Single jumper. 15mm compression connection end. Pre-pack presentation format.

Range: [Cobra](#)



P-PB6-302/N

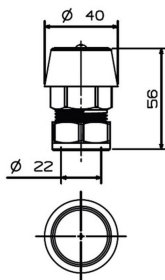
P-PB6-302

0 kg

Vacuum breaker

Vacubreak 3. Single jumper. 3/4inch BSP male iron connection end. Pre-pack presentation format.

Range: [Cobra](#)



P-PB6-303/N

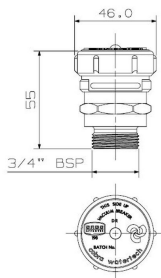
P-PB6-303

0 kg

Vacuum breaker

Vacubreak 3. Single jumper. 22mm compression connection end. Pre-pack presentation format.

Range: [Cobra](#)



PB1-10/N

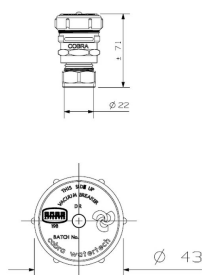
PB1-10

0 kg

Vacuum breaker

Vacubreak 1. Double jumper. 3/4inch BSP male iron connection end.

Range: [Cobra](#)



PB1-10CX/N

PB1-10CX

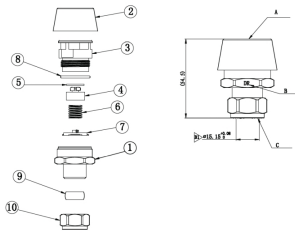
0 kg

Vacuum breaker

Vacubreak 1. Double jumper. 22mm compression connection end.

Range: [Cobra](#)





[PB6-301/N](#)

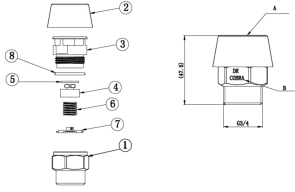
PB6-301

0 kg

Vacuum breaker

Vacubreak 3. Single jumper. 15mm compression connection end.

Range: [Cobra](#)



[PB6-302/N](#)

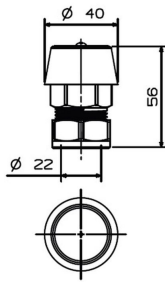
PB6-302

0 kg

Vacuum breaker

Vacubreak 3. Single jumper. 3/4inch BSP male iron connection end.

Range: [Cobra](#)



[PB6-303/N](#)

PB6-303

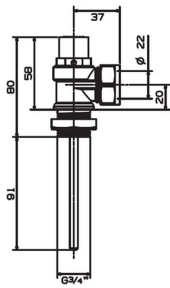
0 kg

Vacuum breaker

Vacubreak 3. Single jumper. 22mm compression connection end.

Range: [Cobra](#)





PB1-13/N

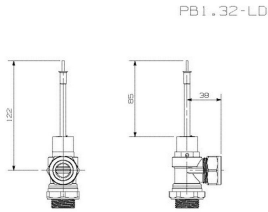
PB1-13

0 kg

TP&S valve

TP master. With locking nut and silicon sealing washer. 3/4inch BSP male iron geyser connection. 22mm compression relief outlet. System pressure 100kPa.

Range: [Cobra](#)



PB1-23/N

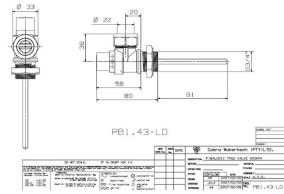
PB1-23

0 kg

TP&S valve

TP master. With locking nut and silicon sealing washer. 3/4inch BSP male iron geyser connection. 22mm compression relief outlet. System pressure 200kPa.

Range: [Cobra](#)



PB1-43/N

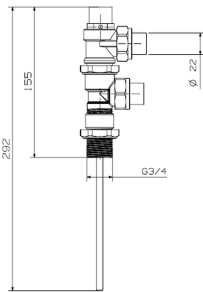
PB1-43

0 kg

TP&S valve

TP master. With locking nut and silicon sealing washer. 3/4inch BSP male iron geyser connection. 22mm compression relief outlet. System pressure 400kPa.

Range: [Cobra](#)



PB1-43BA-LP/N

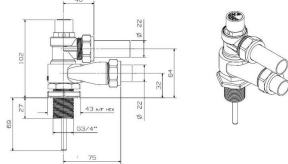
PB1-43BA-LP

0 kg

TP&S valve

TP master Banjo type with extended (9inch) temperature probe and locking nut and silicon sealing washer. 3/4inch BSP male iron geyser connection plus male/female adaptor. 22mm compression relief and hot water outlets. System pressure 400kPa.

Range: [Cobra](#)



PB1-43BA/N

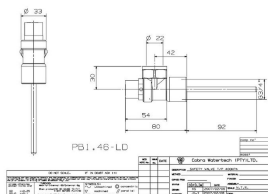
PB1-43BA

0 kg

TP&S valve

TP master Banjo type with locking nut and silicon sealing washer. 3/4inch BSP male iron geyser connection plus male/female adaptor. 22mm compression relief and hot water outlets. System pressure 400kPa.

Range: [Cobra](#)



PB1-46/N

PB1-46

0 kg

TP&S valve

TP master. 3/4inch BSP female iron geyser connection. 22mm compression relief outlet. System pressure 400kPa.

Range: [Cobra](#)



[PB1-63BA-LP/N](#)

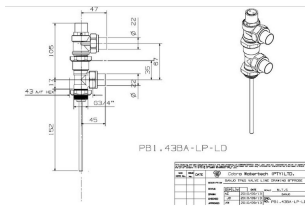
PB1-63BA-LP

0 kg

TP&S valve

TP master Banjo type with extended (9inch) temperature probe and locking nut and silicon sealing washer. 3/4inch BSP male iron geyser connection plus male/female adaptor. 22mm compression relief and hot water outlets. System pressure 600kPa.

Range: [Cobra](#)



[PB1-66/N](#)

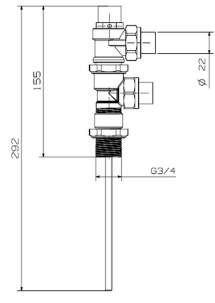
PB1-66

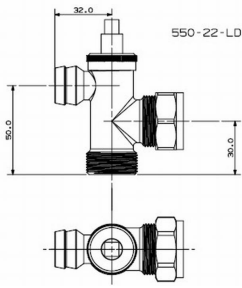
0 kg

TP&S valve

TP master. 3/4inch BSP female iron geyser connection. 22mm compression relief outlet. System pressure 600kPa.

Range: [Cobra](#)





[550-22/N](#)

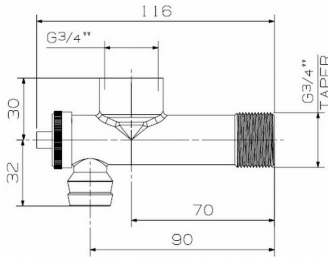
550-22

0 kg

Drain cock

Geyser drain cock. 22mm compression inlet x 22mm compression geyser connection. 20mm drainage hose tail. Compatible with Tecron & City Heat geysers.

Range: [Cobra](#)



[555-20/N](#)

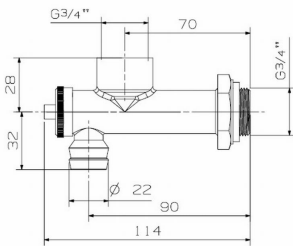
555-20

0 kg

Drain cock

Geyser drain cock. 3/4inch BSP female iron inlet x 3/4inch BSPT male iron geyser connection. 20mm drainage hose tail. Compatible with G Tech and Super Heat geysers.

Range: [Cobra](#)



[557-20/N](#)

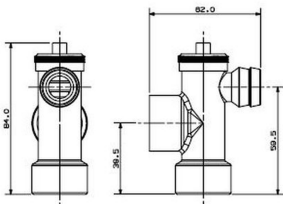
557-20

0 kg

Drain cock

Geyser draincock with locking nut and silicon sealing washer. 3/4inch BSP female iron inlet x 3/4inch BSP male iron geyser connection. 20mm drainage hose tail. To suit Fibalogic hot water cylinders.

Range: [Cobra](#)



[558-20/N](#)

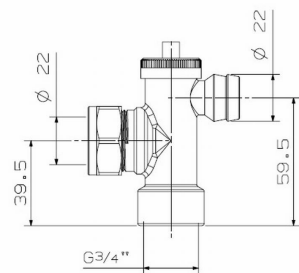
558-20

0 kg

Drain cock

Geyser draincock. 3/4inch BSP female iron inlet x 3/4inch BSP female iron geyser connection. 20mm drainage hose tail. To suit Kwikot hot water cylinders.

Range: [Cobra](#)



[558-22/N](#)

558-22

0 kg

Drain cock

Geyser draincock. 22mm compression inlet x 3/4inch BSP female iron geyser connection. 20mm drainage hose tail. To suit Kwikot hot water cylinders.

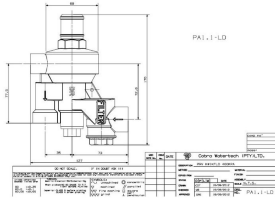
Range: [Cobra](#)



[PA1-1/N](#)

PA1-1

0 kg



Pressure control valve

400kPa Kwikflo. With integral expansion relief valve, stainless steel seat and strainer. 3/4inch BSP female iron inlet and outlet. 1/2inch BSP female iron expansion relief outlet. System pressure 400kPa. Maximum inlet pressure 2,500kPa.

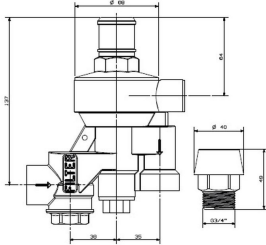
Range: [Closy / Kwikflo](#)



[PA1-1L/N](#)

PA1-1L

0 kg



Pressure control valve

100kPa Closy with 1 x PB6-302 (3/4inch male iron connection end) vacuum breaker. With integral expansion relief valve, stainless steel seat and strainer. 3/4inch BSP female iron inlet and outlet. 1/2inch BSP female iron expansion relief outlet. System pressure 100kPa. Maximum inlet pressure 2,500kPa.

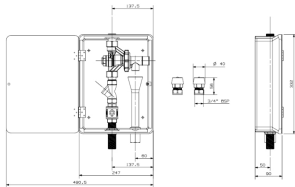
Range: [Closy / Kwikflo](#)



[PA5-1/N](#)

PA5-1

0 kg



Pressure control valve

400kPa Masterflo 1. House box consisting of 1 x PA3-132, 1 x 1050-20 in line strainer, 1x 3/4inch BSP female iron ball valve, 1 x overflow funnel, 1 x GRP box with hinged lid. 2 x PB6-303 22mm compression connection end vacuum breakers. 3/4inch BSP male iron inlet and outlet. System pressure 400kPa. Maximum inlet pressure 2,500kPa.

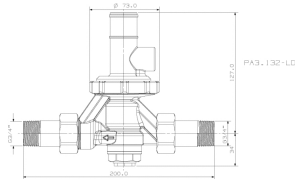
Range: [Masterbox](#)



[PA3-132/N](#)

PA3-132

0 kg



Pressure control valve

400 kPa Masterflo 1. With integral expansion relief valve and strainer. easy-fit PCV cartridge. Stainless steel seat and double mesh stainless steel strainer. Inlet and outlet dust cover/sealing washers. 3/4inch BSP male iron inlet and outlet couplings. 1/2inch BSP female iron expansion relief outlet. System pressure 400kPa. Maximum inlet pressure 2,500kPa.

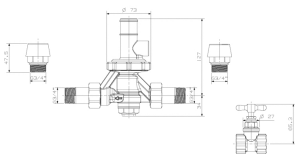
Range: [Masterflo I](#)



[PA3-132PK/N](#)

PA3-132PK

0 kg



Pressure control valve

400 kPa Masterflo 1. Geyser installation pack consisting of 1 x PA3-132, 1 x 22mm female iron valvecock, 2 x PB6-302 vacuum breakers. System pressure 400kPa. Maximum inlet pressure 2,500kPa.

Range: [Masterflo I](#)



PA3-132REP

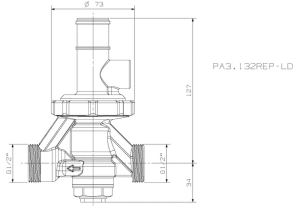
[PA3-132REP/N](#)

0 kg

Pressure control valve

400 kPa Masterflo 1. Replacement valve with integral expansion relief valve and strainer. easy-fit PCV cartridge. Stainless steel seat and double mesh stainless steel strainer. Inlet and outlet dust cover/sealing washers. 3/4inch BSP male iron inlet and outlet. 1/2inch BSP female iron expansion relief outlet. System pressure 400kPa. Maximum inlet pressure 2,500kPa.

Range: [Masterflo I](#)



PA3-332

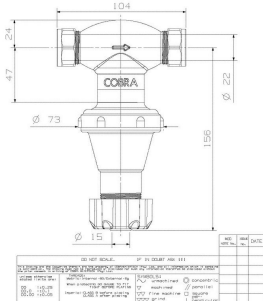
[PA3-332/N](#)

0 kg

Pressure control valve

400 kPa Masterflo 1. With integral expansion relief valve and strainer. Easy-fit PCV cartridge. Stainless steel seat and double mesh stainless steel strainer. 22mm compression inlet and outlet couplings. 1/2inch BSP female iron expansion relief outlet. System pressure 400kPa. Maximum inlet pressure 2,500kPa.

Range: [Masterflo I](#)



PA3-342

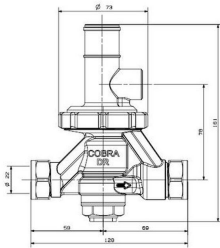
[PA3-342/N](#)

0 kg

Pressure control valve

600 kPa Masterflo 1. With integral expansion relief valve and strainer. easy-fit PCV cartridge. Stainless steel seat and double mesh stainless steel strainer. Inlet and outlet dust cover/sealing washers. 22mm compression inlet and outlet couplings. 1/2inch BSP female iron expansion relief outlet. System pressure 400kPa. Maximum inlet pressure 2,500kPa.

Range: [Masterflo I](#)



PA4-331

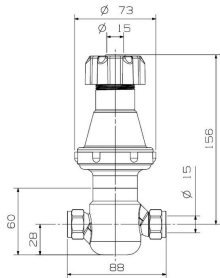
[PA4-331/N](#)

0 kg

Pressure control valve

400 kPa Masterflo 2. With integral expansion relief valve and replaceable cartridge. Stainless steel strainer. 15mm compression inlet and outlet. 15mm Push fit expansion relief outlet. System pressure 400kPa. Maximum inlet pressure 2,500kPa.

Range: [Masterflo II](#)



PA4-332

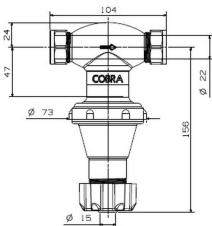
[PA4-332/N](#)

0 kg

Pressure control valve

400 kPa Masterflo 2. With integral expansion relief valve and replaceable cartridge. Stainless steel strainer. 22mm compression inlet and outlet. 15mm Push fit expansion relief outlet. System pressure 400kPa. Maximum inlet pressure 2,500kPa.

Range: [Masterflo II](#)



[PA4-332PK/N](#)

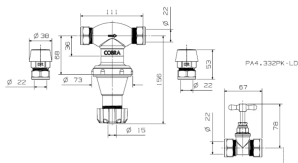
PA4-332PK

0 kg

Pressure control valve

4000 kPa Masterflo 2. Geyser installation pack consisting of 1 x PA4-332, 1 x 22mm compression valvecock, 2 x PB6-303 vacubreak 11 22mm compression vacuum breakers. u00efu00bfu00bd15mm Push fit expansion relief outlet. System pressure 400kPa. Maximum inlet pressure 2,500kPa.

Range: [Masterflo li](#)



[PA4-712/N](#)

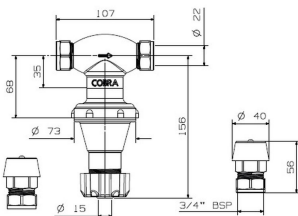
PA4-712

0 kg

Pressure control valve

100 kPa Masterflo 2. With integral expansion relief valve and replaceable cartridge. Stainless steel strainer. 22mm compression inlet and outlet. u00efu00bfu00bd15mm Push fit expansion relief outlet. System pressure 100kPa. Maximum inlet pressure 2,500kPa.

Range: [Masterflo li](#)



[PA4-722/N](#)

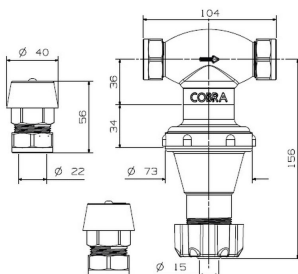
PA4-722

0 kg

Pressure control valve

200 kPa Masterflo 2. With integral expansion relief valve and replaceable cartridge. Stainless steel strainer. 22mm compression inlet and outlet. u00efu00bfu00bd15mm Push fit expansion relief outlet. System pressure 200kPa. Maximum inlet pressure 2,500kPa.

Range: [Masterflo li](#)





ISOLATING VALVES

[1050-15/N](#)

1050-15

0 kg

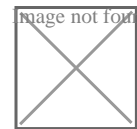
In-line strainer

With stainless steel double mesh strainer basket. 1/2inch BSP female iron connection ends.

Range: [Cobra](#)



Image not found or type unknown



[1050-20/N](#)

1050-20

0 kg

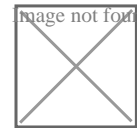
In-line strainer

With stainless steel double mesh strainer basket. 3/4inch BSP female iron connection ends.

Range: [Cobra](#)



Image not found or type unknown



[1022-15/N](#)

1022-15

0 kg

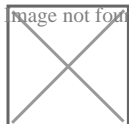
Check valve

Swing type. For use in ascending pipe runs. Hydraulic pressure 2000kPa (non-shock) max and steam pressure 880kPa @ 175u00efu00bfu00bdC max. 1/2inch BSP female iron connection ends.

Range: [Cobra](#)



Image not found or type unknown



[1022-20/N](#)

1022-20

0 kg

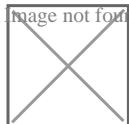
Check valve

Swing type. For use in ascending pipe runs. Hydraulic pressure 2000kPa (non-shock) max and steam pressure 880kPa @ 175u00efu00bfu00bdC max. 3/4inch BSP female iron connection ends.

Range: [Cobra](#)



Image not found or type unknown



[1022-25/N](#)

1022-25

0 kg

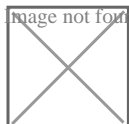
Check valve

Swing type. For use in ascending pipe runs. Hydraulic pressure 2000kPa (non-shock) max and steam pressure 880kPa @ 175u00efu00bfu00bdC max. 1inch BSP female iron connection ends.

Range: [Cobra](#)



Image not found or type unknown



[1022-32/N](#)

1022-32

0 kg

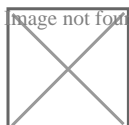
Check valve

Swing type. For use in ascending pipe runs. Hydraulic pressure 2000kPa (non-shock) max and steam pressure 880kPa @ 175u00efu00bfu00bdC max. 1 1/4inch BSP female iron connection ends.

Range: [Cobra](#)



Image not found or type unknown



[1022-40/N](#)

1022-40

0 kg

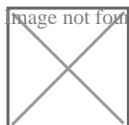
Check valve

Swing type. For use in ascending pipe runs. Hydraulic pressure 2000kPa (non-shock) max and steam pressure 880kPa @ 175u00efu00bfu00bdC max. 1 1/2inch BSP female iron connection ends.

Range: [Cobra](#)



Image not found or type unknown



[1022-50/N](#)

1022-50

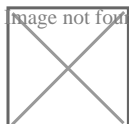
0 kg

Check valve

Swing type. For use in ascending pipe runs. Hydraulic pressure 2000kPa (non-shock) max and steam pressure 880kPa @ 175u00efu00bfu00bdC max. 2inch BSP female iron connection ends.

Range: [Cobra](#)

Image not found or type unknown





[1025-15/N](#)

1025-15

0 kg

Check valve

Spring type. Hydraulic pressure 2000kPa (non-shock) max. Opening pressure 10kPa. 1/2inch BSP female iron connection ends.

Range: [Cobra](#)



Image not found or type unknown



[1025-20/N](#)

1025-20

0 kg

Check valve

Spring type. Hydraulic pressure 2000kPa (non-shock) max. Opening pressure 10kPa. 3/4inch BSP female iron connection ends.

Range: [Cobra](#)



Image not found or type unknown



[1025-25/N](#)

1025-25

0 kg

Check valve

Spring type. Hydraulic pressure 2000kPa (non-shock) max. Opening pressure 10kPa. 1inch BSP female iron connection ends.

Range: [Cobra](#)



Image not found or type unknown



[1025-50/N](#)

1025-50

0 kg

Check valve

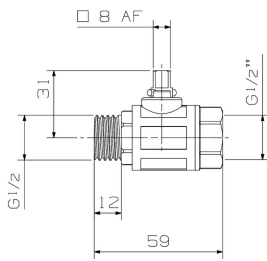
Spring type. Hydraulic pressure 2000kPa (non-shock) max. Opening pressure 10kPa. 2inch BSP female iron connection ends.

Range: [Cobra](#)



Image not found or type unknown





[MUN-B/V-15/N](#)

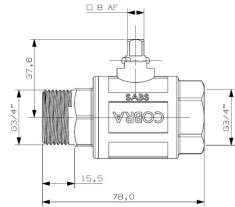
MUN-B/V-15

0 kg

Ball valve

Municipal ball valve 1/2inch BSP MxF

Range: [Cobra](#)



[MUN-B/V-20/N](#)

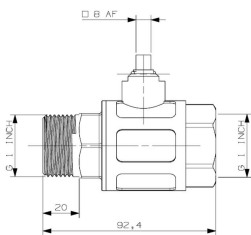
MUN-B/V-20

0 kg

Ball valve

Municipal ball valve 3/4inch BSP MxF

Range: [Cobra](#)



[MUN-B/V-25/N](#)

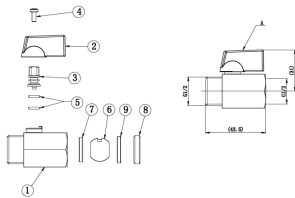
MUN-B/V-25

0 kg

Ball valve

Municipal ball valve 1inch BSP MxF

Range: [Cobra](#)



[1030-15/N](#)

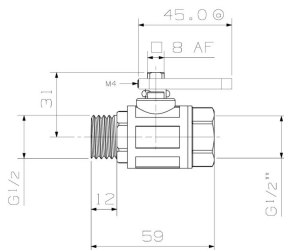
1030-15

0 kg

Ball valve

Ball valve mini 1/2inch BSP male x female.

Range: [Cobra](#)



[MUN-B/V-15CP/N](#)

MUN-B/V-15CP

0 kg

Ball valve

Municipal ball valve 15mm chrome.

Range: [Cobra](#)



[MUN-B/V-40CP/N](#)

MUN-B/V-40CP

0 kg

Ball valve

Municipal ball valve 40mm chrome.

Range: [Cobra](#)



[232-10/N](#)

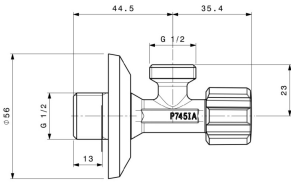
232-10

0 kg

Angle valve

Angle regulating valve. With cap nut and compression ring for 10mm copper tube outlet.
1/2inch BSP male iron connection end.

Range: [Cobra](#)



[832-10/N](#)

832-10

0 kg

Angle valve

Ball type angle valve. With 15mm compression/1/2inch BSP male iron outlet connection.
1/2inch BSP male iron connection end.

Range: [Cobra](#)





ONLINE PLATFORMS

Visit our website and find an office/dealer/distributor closest to you

CONTACT

sales.africa@lixil.com
0861 21 21 21

WEBSITE:

cobra.lixil.co.za

SOCIAL MEDIA:



@Cobrataps



@CobraWatertechSA

PART OF **LIXIL**