



STUDIO LLOYD

FOUNDED IN 2016, OUR DESIGN HOUSE WORKS CLOSELY WITH CLIENTELE TO DEVELOP BEAUTIFUL WORKS OF ART, CRAFTED BY HAND FOR THE RESIDENTIAL, COMMERCIAL & HOSPITALITY INDUSTRY

STUDIO LLOYD AIMS TO PROVIDE EXCLUSIVITY BY CREATING CUSTOM PIECES THAT ARE CAPTIVATING FOR UNIQUE SPACES

CATALOGUE

OTTOMANS | ROUND

STUDIO LLOYD.COM

CONTENT

ROUND OTTOMANS

- SIZES & COLOURS
- FACTS BEHIND THE FIBRE
- OUTDOOR COVERS

IMAGES

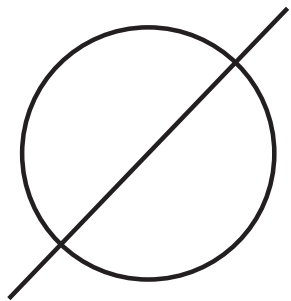
- OPAL BEIGE
- MALTA BROWN
- RUBY RED
- MALACHITE GREEN
- OLIVINE GREEN
- TRAVETINE WHITE
- DIAMOND GREY
- JASPER GREY
- AZURITE NAVY
- ONYX BLACK

ABOUT US

CONTACT



ROUND OTTOMANS



SIZES

900 MM

1100 MM

1400 MM

1800 MM

COLOURS

OPAL BEIGE

MALTA BROWN

RUBY RED

MALACHITE GREEN

OLIVINE GREEN

TRAVERTINE WHITE

DIAMOND GREY

JASPER GREY

AZURITE NAVY

ONYX BLACK

*CUSTOM SIZES & COLOURS CAN BE ARRANGED AND MAY AFFECT LEAD TIMES

OUR MAIN MATERIAL | HIGH QUALITY BRAIDED ROPE

AT STUDIO LLOYD WE USE VARIOUS DIAMETERS OF MULTIFILAMENT ROPE THAT IS COMMONLY USED FOR THE MARINE YACHTING INDUSTRY. WHAT'S UNIQUE ABOUT OUR PIECES IS OUR ROPE HAS BEEN COATED WITH UV PROTECTION MAKING IT A PERFECT MATCH FOR OUTDOOR & INDOOR APPLICATIONS. THE MATERIAL HAS BUILT IN COMPOSITE TO HOLD COLOUR AND PROTECTS AGAINST DECOMPOSING, ANTI-HUMIDITY DECAY & INSECT INHABITATION.

OUR MULTIFILAMENT ROPE MAKES THE INSTALLATIONS WEATHER RESISTANT, THEREFORE KEEPING ITS SHAPE AND QUALITY OVER TIME. A **TRUE INVESTMENT** TO YOUR INTERIOR.



COLOURS

OPAL BEIGE



MALTA BROWN



RUBY RED



MALACHITE GREEN



OLIVINE GREEN



TRAVETINE WHITE



DIAMOND GREY



JASPER GREY



AZURITE NAVY



ONYX BLACK



*CUSTOM SIZES & COLOURS CAN BE ARRANGED AND MAY AFFECT LEAD TIMES

FACTS BEHIND THE FIBRE

OUR OTTOMANS ARE
HANDCRAFTED FROM
HIGH QUALITY BRAIDED
ROPE WHICH HAS BEEN
COATED WITH A UV
PROTECTIVE LAYER.

SUITABLE FOR INDOOR &
OUTDOOR.

LOCALLY SOURCED,
LOCALLY MADE.

DESIGNED
TO LAST AND BRING
TEXTURE TO A SPACE.

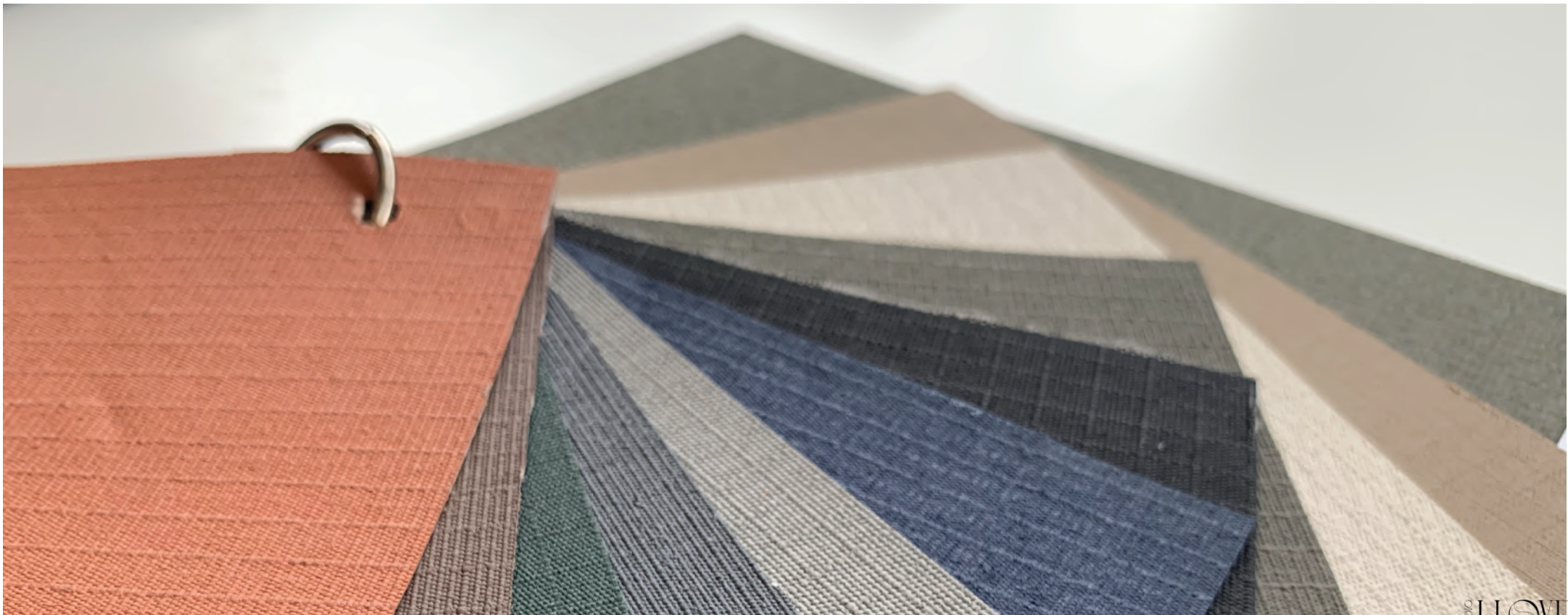


OUTDOOR COVERS

OUR OUTDOOR COVERS ARE MADE TO SIZE FROM HIGH QUALITY CANVAS MATERIAL. THEY ARE WATERPROOF & UV PROTECTED.

WE OFFER A VARIETY OF COLOURS TO MATCH THE BODY OF THE OTTOMANS.

THE COVERS SLIDE OVER THE OTTOMANS AND USE A DRAW STRING MECHANISM FINISHED WITH BRASS OR SILVER EYELIDS.



OPAL BEIGE



1400MM







MALTA BROWN



RUBY RED



MALACHITE GREEN

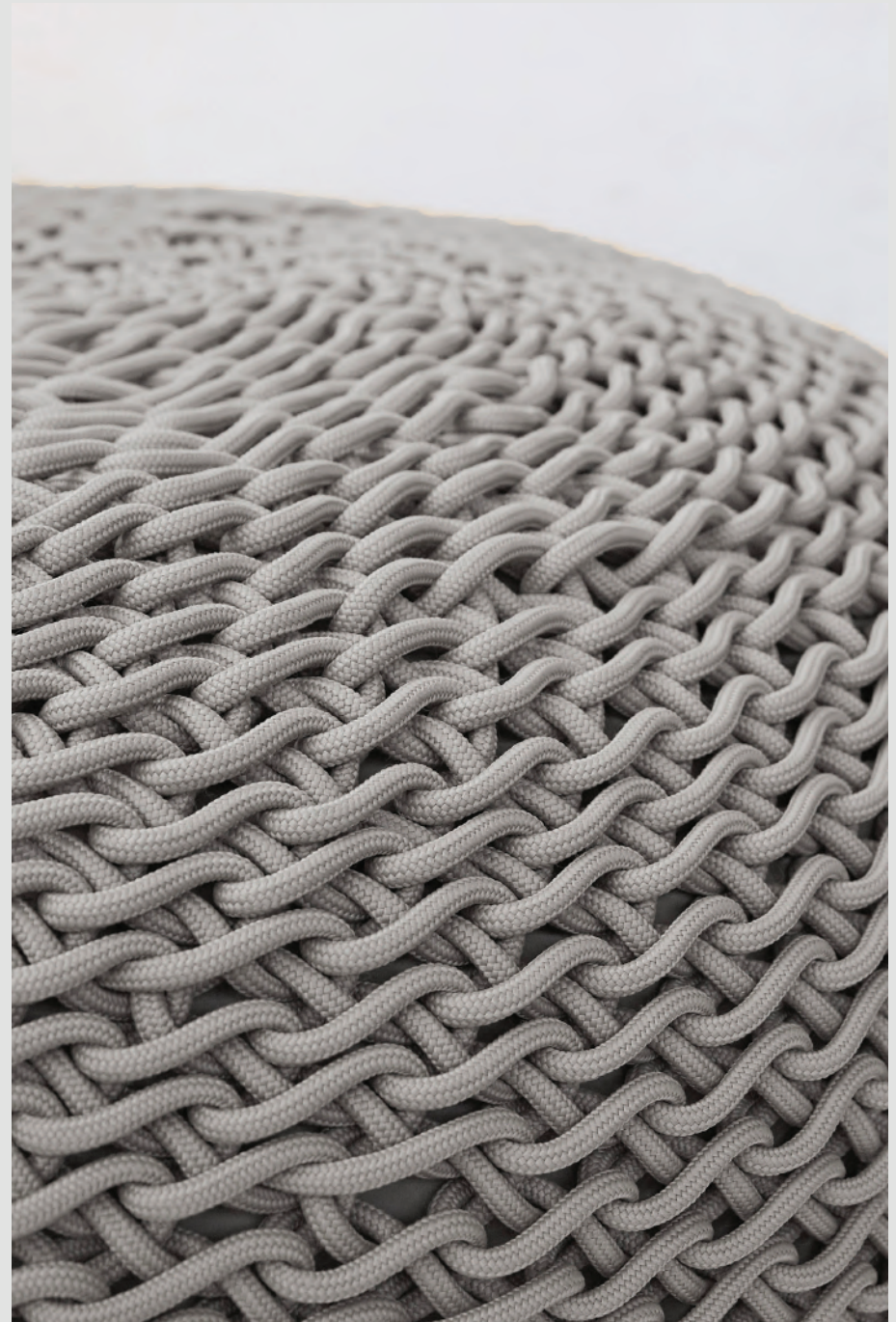


OLIVINE GREEN

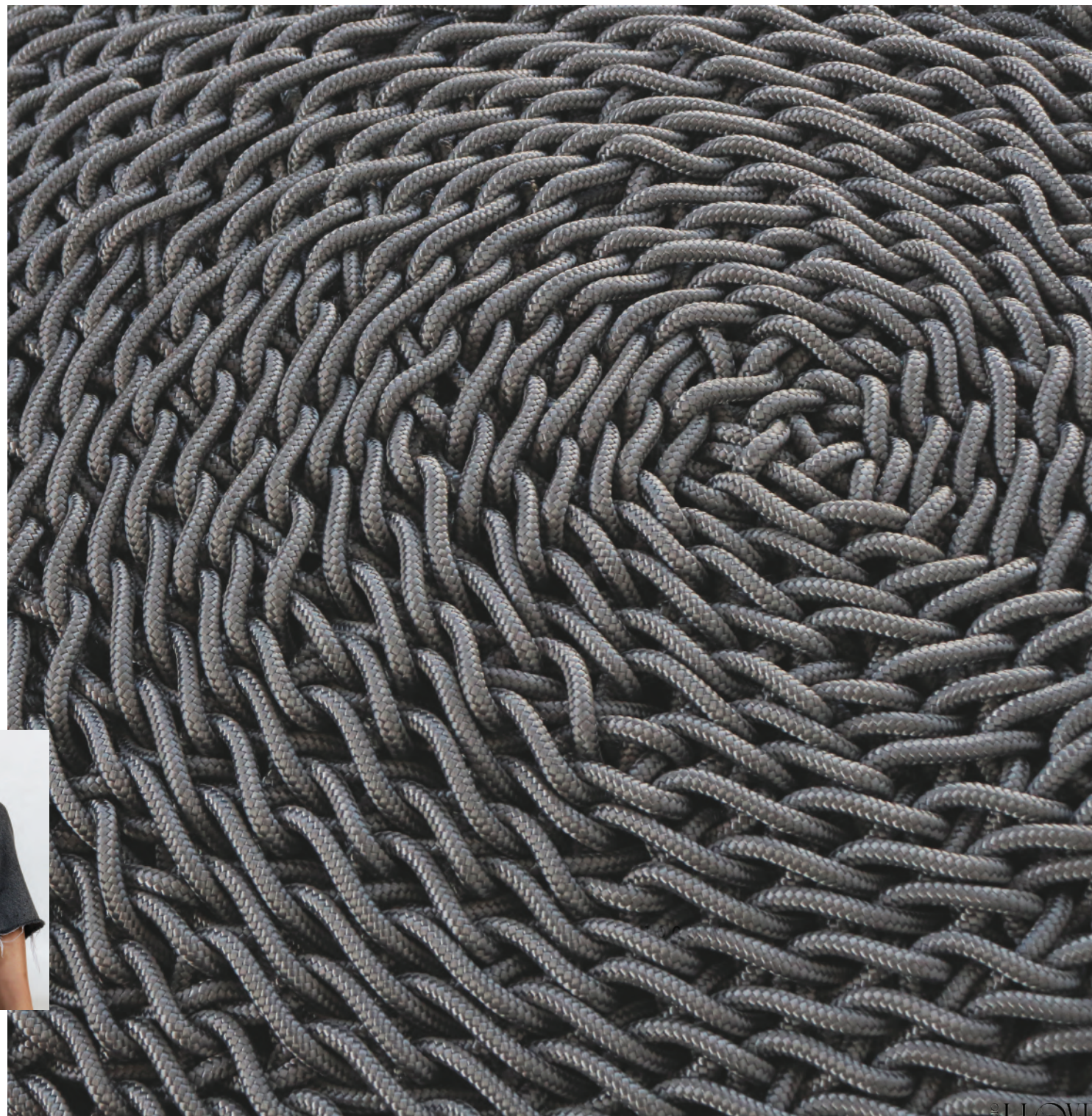
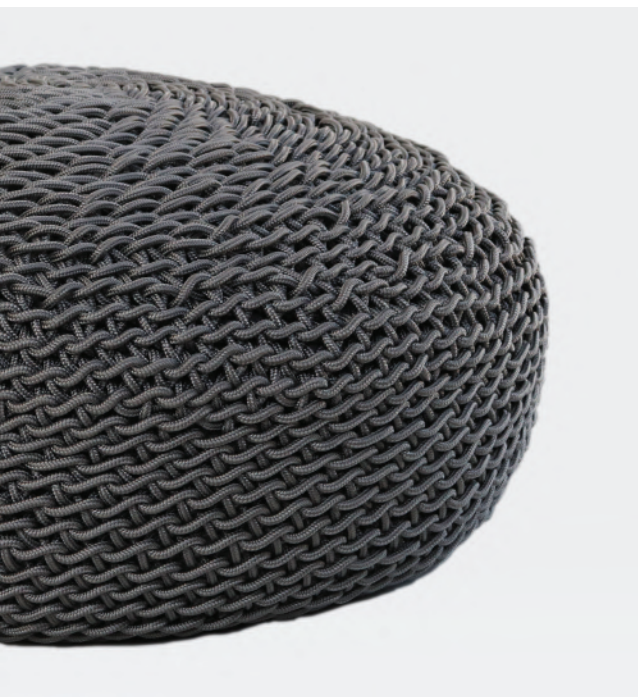
TRAVETINE WHITE



DIAMOND GREY



JASPER GREY





AZURITE NAVY



ONYX BLACK

ABOUT US

ABOUT THE STUDIO

STUDIO LLOYD OFFERS LUXURIOUS LIGHT SCULPTURE, FURNITURE, OBJECTS AND CONCEPTUAL DESIGN OF SPACES. FOUNDED IN 2016, OUR DESIGN HOUSE WORKS CLOSELY WITH THEIR CLIENTELE TO DEVELOP BEAUTIFUL WORKS OF ART THAT ARE CRAFTED BY HAND FOR GAME LODGES, REMOTE RESORTS, EXCLUSIVE HOTELS AND HIGH-END RESIDENTIAL PROPERTY.

STUDIO LLOYD AIMS TO PROVIDE EXCLUSIVITY BY CREATING CUSTOM PIECES THAT ARE CAPTIVATING, EYE CATCHING AND UNIQUE. THE ATTENTION TO EACH PROCESS, THE MANIPULATION OF THE CROCHET TECHNIQUE AND THE PASSION BEHIND EACH PROJECT, MAKES IT UNLIKELY TO FIND SOMETHING SIMILAR.



STUDIO LLOYD

E - DESIGN@STUDIO LLOYD.COM

T - +27 82 074 8340

STUDIO LLOYD.COM



WWW.STUDIOOLLOYD.COM

