

RMC EXTERIOR WOOD CLEANER

Rubio® Monocoat Exterior Wood Cleaner is a preparatory cleaner for all types of exterior wood (wooden patios, fences, exterior doors, carports, terraces, etc.) and composite. The product removes grey discoloration, green deposits and dirt.

PRODUCT INFORMATION

› Benefits

- New wood:
 - › grease that appears naturally in some types of wood is removed.
 - › the pores are opened, this guarantees that the protective layer will last longer.
- Wood previously treated with another brand's product:
 - › for saturation products applied to the wood longer than a year: RMC Exterior Wood Cleaner will remove all residues from previous treatments.
 - › if a paint or varnish has been applied, the surface must be sanded, stripped or sand-blasted first.

› Technical characteristics

- Physical state: liquid
- Colour: transparent
- Odour: characteristic
- pH: 1,3
- Density: 0,99 kg/L

› Packaging

Bottle 100 ml and 1 L, jerrycan 5 L

› Storage

The product can be stored for up to 12 months in a dry place and in the original packaging. Do not allow to freeze.

APPLICATION INFORMATION

› Instructions

STEP 1. Dampen the surface with water. Use a garden hose.

STEP 2. Apply some undiluted RMC Exterior Wood Cleaner.

STEP 3. Scrub the treated area with a nylon scrubbing brush in the lengthwise direction of the wood until it is clean.

This will cause the product to foam. For stubborn stains, repeat the treatment.

STEP 4. Rinse thoroughly until all the foam has disappeared.

STEP 5. Allow the surface to dry well (± 30 minutes at a temperature of 20°C and proper ventilation).

STEP 6. Treat with the Rubio® Monocoat exterior wood protection product of your choice.

› Tips & tricks

A good preparation is crucial to ensure a lasting protective finish. All new, greyed, and previously treated wood must always be treated beforehand with RMC Exterior Wood Cleaner.

› Usage

Manual: ± 15 m²/L

These usages are merely indicative. It is always recommended to make a sample in order to calculate the exact usage.



Rubiomonocoat GREASE REMOVER

DESCRIPTION:

Rubio Monocoat Grease Remover is a ready-to-use product that removes recent grease stains from a surface treated with Rubio Monocoat Oil. The product should be applied immediately after the stain occurs thereby preventing the grease from penetrating the surface.

APPLICATION:

1. Spray **RMC Grease Remover** on the stain.
2. Allow several minutes for absorption.
3. Dab dry using a cloth or paper towel.
4. Rinse the whole surface thoroughly using a damp cloth, or clean the surface using **RMC Surface Care**.

For stubborn marks, it is recommended to repeat this method as many times as needed to achieve the desired result.

TECHNICAL CHARACTERISTICS:

Consistency: liquid
 Colour: clear, blue
 Flash point: ca. 11 °C
 Density (20 °C) (ASTM D 4052): 0.806 – 0.850 kg/L
 Solubility in water: fully

STORAGE:

The product can be stored for up to 12 months. Store in dry conditions and in the original packaging. Do not allow to freeze.

PACKAGING:

Ecospray 0,5 L

PROVIDED BY:

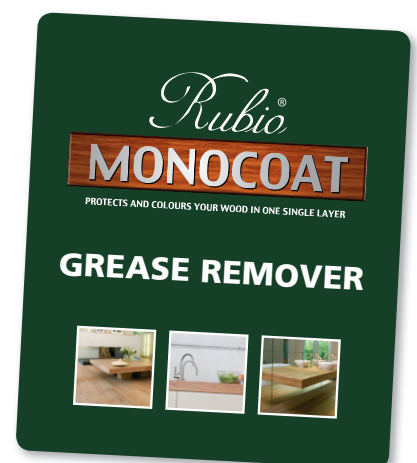
DISCLAIMER: It is the responsibility of the user to determine through own testing whether the product is suited for its chosen application. Muylle Facon NV is not liable for any resultant damage. The above information may be subject to amendments, which will be published in revised versions of the technical sheet. We waive all responsibility for unsatisfactory results that are due to causes unrelated to the quality of the product. This technical information has been collected on the basis of current information and knowledge. The most recent technical sheets can be requested or are available on the website.



Consult the safety sheet before use.
 Date TDS: 14/04/14

MUYLLE FACON

MADE IN BELGIUM by N.V. MUYLLE - FACON S.A.
 Ambachtenstraat 58 - B-8870 Izegem (Industriezone Abele)
 Tel. +32 (0)51 30 80 54 - Fax + 32 (0)51 30 99 78 - HRK 1823
 info@muyllefacon.be - www.rubiomonocoat.com



RMC HYBRID WOOD PROTECTOR

RMC Hybrid Wood Protector is a genuine 'monocoat', suitable for coloring and protecting almost all exterior wood in 1 single layer. The oil protects wooden façades, patios, shutters, portals, garden furniture, pontoons, etc. from discolouration and weathering. The easy application and maintenance make this oil an exceptionally user-friendly product.



PRODUCT INFORMATION

› Unique characteristics

- Based on RMC technology using integrated UV stabilizer.
- 0% VOC, does not contain any water or solvents.
- Suitable for almost all types of wood, can also be used for interior applications!
- Available in 12 contemporary wood colours and 8 trendy pop colours.
- Easy to apply.
- Fast-drying.
- Economical: minimum consumption.
- Not film-forming. Does not flake off.
- Maintenance with the same product. No need for sanding!

› Technical characteristics

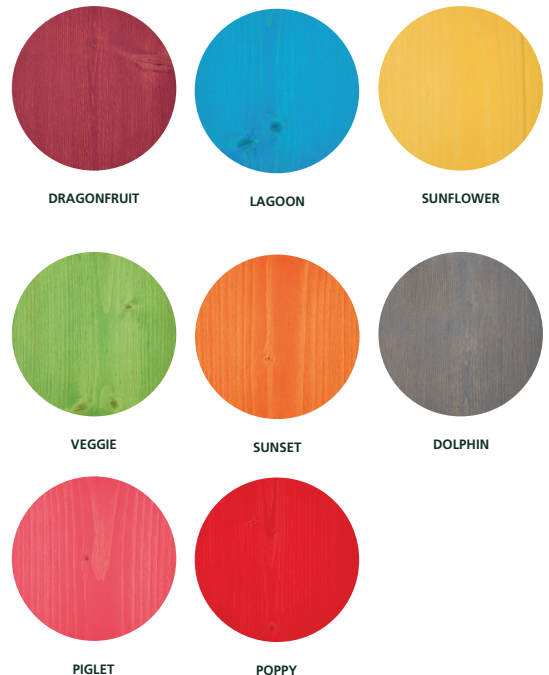
- Physical state: liquid
- Smell: linseed oil
- Density: 0.95 - 1.3kg/L
- VOC: 0 g/L
- QUV: tested according to the EN 927-6 norm.

› Colours

Traditional colours:



POP colours:



PLEASE NOTE:

- The pigment in the various RMC Hybrid Wood Protector colours contributes to the protection of the wood from greying. The colour PURE is not pigmented, which will cause the natural greying to occur in exterior environments.
- To further intensify the coloring, RMC Hybrid Wood Protector can be combined with an optional pre-treatment with RMC Sunprimer HWP. Please consult the technical data sheet of the RMC Sunprimer HWP for detailed instructions.

› **Packaging**



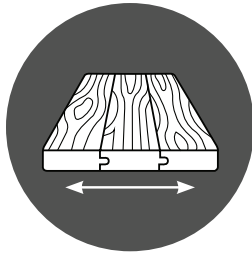
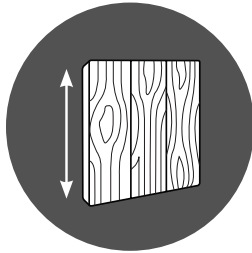
Bottle 20 ml, 100 ml and 0,5 L, can 1 L and 2,5 L

› **Storage**

The product can be stored for up to 36 months in dry conditions and when stored in the original packaging. Keep away from frost.

APPLICATION INFORMATION

› **Application possibilities**

		 RMC Hybrid Wood Protector	 RMC Sunprimer HWP & RMC Hybrid Wood Protector
 Horizontal	Deckings	✓	✓
	Tables, chairs,...	✓	✓
 Vertical	Façades	✓	✓
	Windows, doors,...	✓	✓

REMARK: EXTERIOR AND INTERIOR!

RMC Hybrid Wood Protector can even be used indoors to treat surfaces like parquet floors, wooden bathroom furnishings and kitchen worktops. These items are often used intensively which is why it's obligatory to add **10% of RMC Accelerator** to the oil.

› Instructions

EXTERIOR

- STEP 1.** Remove all residues of old applications. Clean the surface using RMC Exterior Wood Cleaner.
- STEP 2.** Stir the oil thoroughly before use.
- STEP 3.** Once the cleaned surface is dry, apply a layer of RMC Hybrid Wood Protector with a flat brush or a RMC Brush Standard 220.
- STEP 4.** Leave to react for 10 minutes. Smooth the surface again with the same brush (without applying new product).
- STEP 5.** After 5 minutes wipe off traces of excess product with a piece of cloth.
- STEP 6.** Let dry for about 24 hours. Complete curing takes place after 7 days.

› Tips

- The preparation always has to be done with RMC products.
- Never apply in direct sunlight and at temperatures under 10 °C. Only work when weather conditions are dry.
- Do not cover and do not place heavy objects on the wood until completely dry.
- Horizontal surfaces need to be rubbed dry if they are exposed to rain within 24-36 hours after applying the oil.

INTERIOR

- STEP 1.** Sand the surface scratch-free. Vacuum thoroughly, eliminate remains of dust with RMC Cleaner.
- STEP 2.** Add 10 % of RMC Accelerator to the oil. Stir thoroughly before use.
- STEP 3.** Once the cleaned surface is dry, spread out a small quantity of the product with a cloth or the RMC Brush Standard 100.
- STEP 4.** Leave to react during a few minutes.
- STEP 5.** Thoroughly remove all excess of oil with a cloth. The surface should feel dry!
- STEP 6.** Let dry for about 24 hours. Complete curing takes place after 7 days.

ATTENTION

The product must not be diluted under any circumstances.
Cloths that are soaked in oil may spontaneously combust and must therefore be submerged in water after use.

INDUSTRIAL APPLICATION

If you want to apply this product in an industrial manner, we advise you to get in contact with our technical care team. The technical data sheet for industrial use is available on demand.

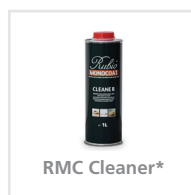
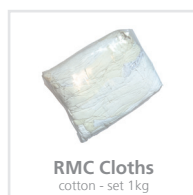
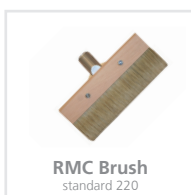
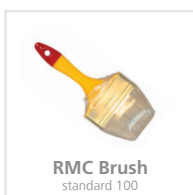
For industrial applications, it is obligatory to add **10% of RMC Accelerator** to the RMC Hybrid Wood Protector.

› Coverage

- Usage on exterior wood: 1 L = ± 30 m²
- Usage on interior wood: 1 L = ± 50 m²

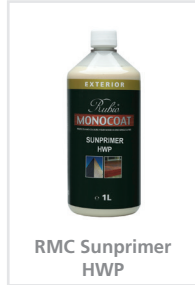
These usages are merely indicative. Results depend on wood type, wear and tear and method of preparation. It is always recommended to make a sample in order to calculate the exact usage.

› Tools



*The used tools can be cleaned with RMC Cleaner.

› Related products



Check the packaging and the safety data sheet for more details.

For our complete assortment of products and machinery for the protection and colouring of interior and exterior wood, please visit www.rubiomonocoat.com

YOUR DISTRIBUTOR:

LIABILITY: It is the user's responsibility to establish, through his own tests, whether the product is suitable for the chosen application. In no case can Muylle Facon NV be held liable for any consequential damage. The information above may be subject to changes, which will be published in the updated versions of the technical data sheet. We cannot be held liable for poor results due to causes that are not related to the quality of the product. This technical information has been drawn up based on the currently available information and knowledge. The most recent technical data sheets can be requested or are available on the website. **Date of TDS: 09/05/2018. Check the safety information before using the product.**



Rubio[®] MONOCOAT

MUYLLE  FACON

Muylle Facon BVBA
Ambachtenstraat 58
8870 Izegem (BELGIË)

Tel. +32 (0) 51 30 80 54
Fax +32 (0) 51 30 99 78
info@muyllefacon.be

www.rubiomonocoat.com

Rubiomonocoat LIMESPOT REMOVER

DESCRIPTION:

Rubio Monocoat Limespot Remover is a ready-to-use product that removes lime spots from a surface treated with Rubio Monocoat Oil.

APPLICATION:

1. Spray **RMC Limespot Remover** on the stain.
2. Allow several minutes for absorption.
3. Dab dry using a cloth or paper towel.
4. Rinse the whole surface thoroughly using a damp cloth, or clean the surface using **RMC Surface Care**.

For stubborn marks, it is recommended to repeat this method as many times as needed to achieve the desired result.

TECHNICAL CHARACTERISTICS:

Consistency (20 °C): liquid

Colour: clear, colourless

Flash point: > 55 °C

Density (20 °C): 1.012 kg/L

Solubility in water: fully

STORAGE:

The product can be stored for up to 12 months. Store in dry conditions and in the original packaging.

Do not allow to freeze.

PACKAGING:

Ecospray 0,5 L

PROVIDED BY:

DISCLAIMER: It is the responsibility of the user to determine through own testing whether the product is suited for its chosen application. Muylle Facon NV is not liable for any resultant damage. The above information may be subject to amendments, which will be published in revised versions of the technical sheet. We waive all responsibility for unsatisfactory results that are due to causes unrelated to the quality of the product. This technical information has been collected on the basis of current information and knowledge. The most recent technical sheets can be requested or are available on the website.



Consult the safety sheet before use.

Date TDS: 14/04/14

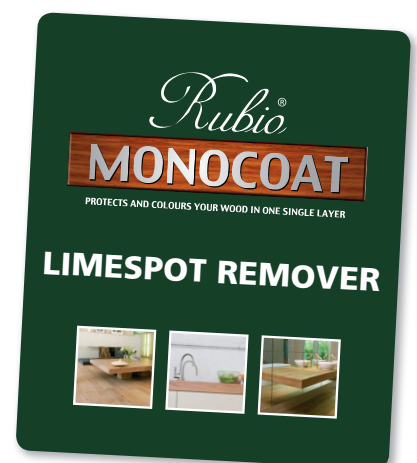
MUYLLE FACON

MADE IN BELGIUM by N.V. MUYLLE - FACON S.A.

Ambachtenstraat 58 - B-8870 Izegem (Industriezone Abele)

Tel. +32 (0)51 30 80 54 - Fax + 32 (0)51 30 99 78 - HRK 1823

info@muyllefacon.be - www.rubiomonocoat.com



RMC OIL PLUS 2C

Protects and colours your wood in one single layer

Rubio® Monocoat Oil Plus 2C is a product of the newest generation which colours your wood and protects it in one layer. The combination of the oil (A) and the accelerator (B) guarantees a quick drying.

Can also be applied as renovation and maintenance oil on surfaces which are treated with RMC Oil.

PRODUCT INFORMATION

› Specific characteristics

- Colours and protects in 1 layer
- 40 standard colours that can be blended for unlimited possibilities
- Enhances the natural look and feel of the wood
- Environmentally friendly: 0% VOC!
- Does not contain any water or solvents
- Easy to maintain
- No overlaps or starting marks
- Durable protection
- Minimal use: 30 - 50 m²/L
- Can be applied to almost all wood types, furniture as well as floors (solid wood, veneer, MDF, ...)
- Very wear-resistant
- Water-resistant, ideal for kitchens and bathrooms
- Heat-resistant
- Very fast curing: 80% in 2 days
- A short 'dry' maintenance period: after 5 days, the surface can be cleaned with water and soap

› Technical characteristics

RMC Oil Plus 2C (A)

- Physical state at 20°C: liquid
- Odour: oily
- Flash point: > 99°C
- Density: > 0,9 kg/L
- VOC content: 0 g/L

RMC Accelerator (B)

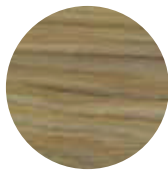
- Physical state at 20°C: liquid
- Colour: clear
- Odour: none
- Flash point: > 160°C (closed cup)
- VOC content: 0 g/L



› Colours



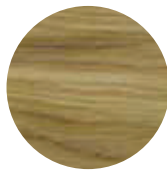
ANTIQUÉ BRONZE



AQUA



ASH GREY



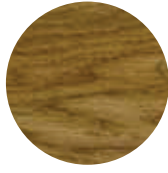
BISCUIT



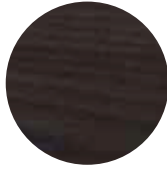
BLACK



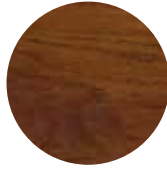
BOURBON



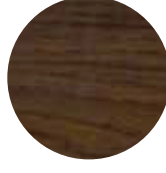
CASTLE BROWN



CHARCOAL



CHERRY CORAL



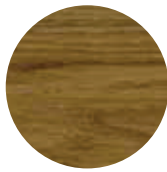
CHOCOLATE



CORNSILK



COTTON WHITE



DARK OAK



GRIS BELGE



HAVANNA



ICE BROWN



MAHOGANY



MIST



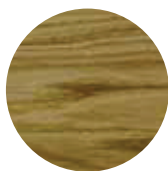
MIST 5%



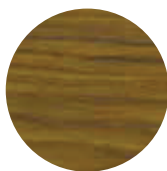
MUD LIGHT



NATURAL



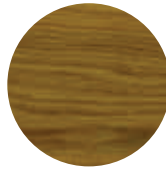
OAK



OLIVE



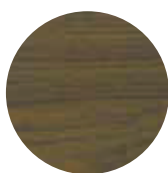
OYSTER



PINE



PURE



SAVANNA



SILVER GREY



SKY GREY



SLATE GREY



SMOKE



SMOKE 5%



SMOKED OAK



STONE



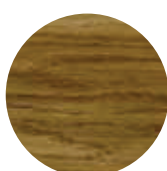
SUPER WHITE



TITANIUM GREY



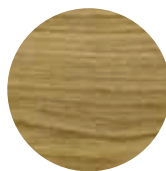
VANILLA



WALNUT



WHITE



WHITE 5%

› Packaging

Combined can of 350 ml: 275 ml RMC Oil Plus 2C (A) and 75 ml RMC Accelerator (B)

Combined can of 1,3 L: 1 L RMC Oil Plus 2C (A) and 0,3 L RMC Accelerator (B)

Combined can of 3,5 L: 2,750 L RMC Oil Plus 2C (A) and 0,750 L RMC Accelerator (B)

› Storage

The product can be stored up to 36 months in dry conditions and in its original packaging. Keep away from frost.

APPLICATION INFORMATION

› Instructions

STEP 1. Untreated wood: sand the surface scratch-free. Vacuum thoroughly, eliminate remains of dust with RMC Cleaner.

STEP 2. Carefully mix the two components (1 to 2 minutes) with a ratio of appr. 3 units A to 1 unit B.

STEP 3. Once the cleaned surface is dry, spread out a small quantity of RMC Oil Plus 2C (cloth or polishing machine with thin beige pad). Work in zones of 5 - 10 m².

STEP 4. Let absorb during a few minutes. Thoroughly remove all excess of oil (cloth or polishing machine with white pad) within 15 minutes per zone. The surface should feel dry! Finish all zones the same way.

STEP 5. In a well ventilated room, the surface can be used 24 - 36 hours after the application.

After 5 days a treatment with water and RMC products can be applied.

In order to guarantee a long lifespan and protection, the use of Rubio® Monocoat maintenance products is imperative.

› Tips & tricks

· The product may NOT be diluted!

· Stir the product well before application. When using several containers at one site, it is recommended to mix them for an even result.

ATTENTION:

Cloths, saturated with oil, may spontaneously combust. After usage, they need to be soaked in water before disposal.

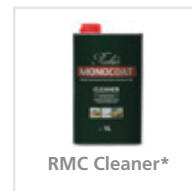
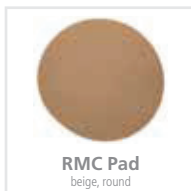
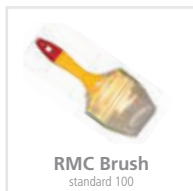
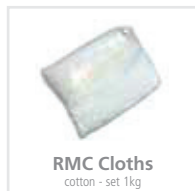
› Consumption

30 - 50 m²/L, depending on the wood type, sanding and application method. RMC Oil Plus 2C may be used for a maximum of 4 - 6 hours after mixing.

Remark: consumption industrial applications: 60 - 80 m²/L.

These usages are merely indicative. Results depend on wood type and method of preparation. It is always recommended to make a sample in order to calculate the exact usage.

› Tools



*The used tools can be cleaned with RMC Cleaner.

› Related products



Check the packaging and the safety data sheet for more details.

For our complete assortment of products for the protection and colouring of interior and exterior wood, please visit www.rubiomonocoat.com

YOUR DISTRIBUTOR:

LIABILITY: It is the user's responsibility to establish, through his own tests, whether the product is suitable for the chosen application. In no case can Muylle Facon NV be held liable for any consequential damage. The information above may be subject to changes, which will be published in the updated versions of the technical data sheet. We cannot be held liable for poor results due to causes that are not related to the quality of the product. This technical information has been drawn up based on the currently available information and knowledge. The most recent technical data sheets can be requested or are available on the website. **Date of TDS: 23/04/2018. Check the safety information before using the product.**



Rubio[®]
MONOCOAT

MUYLLE  FACON

Muylle Facon BVBA
Ambachtenstraat 58
8870 Izegem (BELGIË)

Tel. +32 (0) 51 30 80 54
Fax +32 (0) 51 30 99 78
info@muyllefacon.be

www.rubiomonocoat.com

RMC PRE-AGING

Non-reactive pre-treatment to give new wood an old look.

A new floor with an old look. It is a floor trend that is currently very popular. In addition to actually smoking and fuming wood, there are many reactive products that will give the wood a smoked or aged look.

Rubio Monocoat Pre-Aging is a high-quality, non-reactive pre-treatment, available in 10 standard shades. The colour spectrum ranges from a lighter to a darker smoked look, with colours that can be mixed with each other to the variant the customer wants. This results in a **deep colour with subtle accents**.

PRODUCT INFORMATION

› Unique characteristics

- Non-reactive water-based pre-treatment
- Stable colour that is easy to reproduce
- Excellent stain resistance after treatment with our oil
- Deep colouring with subtle accents
- Applicable to virtually all wood types
- Neutral product
- Does not affect the quality of the finishing coat
- Minimal odour
- Free of transport restrictions
- Also colours the hard parts of the wood and the sapwood
- No overlaps

› Technical characteristics

- Liquid at 20 °C
- Thin as water
- Sweet smell
- Flash point > 100°C
- Density about 1 kg/L
- Boiling point about 100 °C

› Packaging

Plastic bottle of 100 ml and 1 L.
Plastic jerrycan of 5 L and 25 L.

› Storage

The product can be stored up to 12 months in dry conditions and in its original packaging. Keep in a well-ventilated place and keep away from frost.

› Colours

You can find the 10 Rubio Monocoat Pre-Aging colours on the next page.



› Colours

Fumed look



FUMED INTENSE



FUMED LIGHT

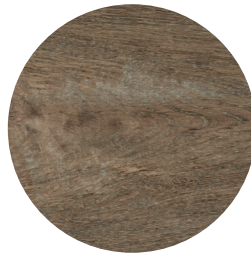
Authentic Amonia look



AUTHENTIC #1



AUTHENTIC #2



AUTHENTIC #3



AUTHENTIC #4



AUTHENTIC #5



AUTHENTIC #6

Smoked look



SMOKE INTENSE



SMOKE LIGHT

APPLICATION INFORMATION

› Instructions

Manually:

- STEP 1.** Sand the surface to be treated without making scratches. Vacuum thoroughly and carefully remove the sanding dust.
- STEP 2.** Apply Rubio Monocoat Pre-Aging equally and in a saturated manner with a Rubio Monocoat Brush, Rubio Monocoat Standard Sponge or spraying gun on the surface that you want to treat.
- STEP 3.** Even out with a beige Rubio Monocoat Scrubby Pad.
- STEP 4.** Leave to dry for about 24 hours.

With the use of a polishing machine:

- STEP 1.** Sand the surface to be treated without making scratches. Vacuum thoroughly and carefully remove the sanding dust.
- STEP 2.** Apply in a saturated manner with a Rubio Monocoat Sponge, Rubio Monocoat Standard Brush, or Rubio EasyPrimer White Roller.
- STEP 3.** Spread equally with a polishing machine, equipped with a beige Rubio Monocoat Pad.
- STEP 4.** It is advised to do this in an area of about 1 meter wide lengthwise of the room, so that no one needs to step in the product when polishing again afterwards with a white Rubio Monocoat Pad to wipe dry the surface.
- STEP 5.** Leave to dry about 24 hours to apply further treatments. This may be an optional pre-colour or a protective finishing layer.

ATTENTION

This product is a pre-treatment and does not protect the wood. It has to be combined with one of our Rubio Monocoat finishing products for maximum protection.



› Tips & Tricks

Do take into account that the base colour, the grain structure and the porosity of the wood will affect the end result. A wood type with red undertones, for example, will have a different effect than new, pale pinewood. That is why it is important to apply a sample first.

› Tools



Check the packaging and the safety data sheet for more details.

For our complete assortment of products for the protection and colouring of interior and exterior wood, please visit www.rubiomonocoat.com

YOUR DISTRIBUTOR:

LIABILITY: It is the user's responsibility to establish, through his own tests, whether the product is suitable for the chosen application. In no case can Muylle Facon NV be held liable for any consequential damage. The information above may be subject to changes, which will be published in the updated versions of the technical data sheet. We cannot be held liable for poor results due to causes that are not related to the quality of the product. This technical information has been drawn up based on the currently available information and knowledge. The most recent technical data sheets can be requested or are available on the website. **Date of TDS: 03/01/2019. Check the safety information before using the product.**



Rubio[®] MONOCOAT

MUYLLE  FACON

Muylle Facon BVBA
Ambachtenstraat 58
8870 Izegem (BELGIË)

Tel. +32 (0) 51 30 80 54
Fax +32 (0) 51 30 99 78
info@muyllefacon.be

www.rubiomonocoat.com

Rubiomonocoat PRECOLOR EASY

CREATIVE ZONE

DESCRIPTION:

Rubio Monocoat Precolor Easy is a pre-colour, designed to be used in combination with the **RMC Oil Plus 2C**, to create special effects and contrasts.

The option to choose a combination of 14 different colours of **RMC Precolor Easy** (which can be mixed with one another) with a finish in one of the 40 colours of the **RMC Oil Plus 2C** range allows unlimited creative possibilities, while the optimal molecular bonding of the **RMC Oil Plus 2C** with the wood remains guaranteed.

SPECIFIC FEATURES:

- Natural look
- Can also be applied with a polisher
- 14 unique colours
- Unlimited combinations possible

APPLICATION:

1. Sand the surface according to professional standards.
When renovating old floors, you must remove all the residues from previous treatments completely (varnish, oil, wax, etc.).
2. Vacuum the floor with an industrial cleaner, then apply **RMC Cleaner**.
3. Stir the product thoroughly and regularly with a stirring rod.

Manual application:

- Work in areas sized to allow manual touch-ups without having to tread the finished area. If necessary, use tape to tape off areas.
- Apply **RMC Precolor Easy** in crosswise direction using a (mohair) roller.
- Spread evenly using a lint-free cloth.

Mechanical application:

- Work in areas sized to allow manual touch-ups without having to tread the finished area. If necessary, use tape to tape off areas.
- Apply **RMC Precolor Easy** in crosswise direction using a (mohair) roller.
- Polish using a floor polisher with a **red RMC Pad**. As soon as circles are no longer visible, stop polishing (do not rub dry).
- Now, rub the borders evenly using a scrubby and a **red RMC Pad**.

4. Allow the surface to dry for 1 to 3 hours. The exact drying time depends on the foundation, moistening, temperature and ventilation.

For any overlapping: see remarks!

5. Apply the **RMC Oil Plus 2C**.

Please consult the technical data sheet of the oil for the correct application of this product!

PROVIDED BY:

DISCLAIMER: It is the responsibility of the user to determine through own testing whether the product is suited for its chosen application. Muylle Facon NV is not liable for any resultant damage. The above information may be subject to amendments, which will be published in revised versions of the technical sheet. We waive all responsibility for unsatisfactory results that are due to causes unrelated to the quality of the product. This technical information has been collected on the basis of current information and knowledge. The most recent technical sheets can be requested or are available on the website.



Consult the safety sheet before use.
Date TDS: 10/12/14

MUYLLE FACON

MADE IN BELGIUM by N.V. MUYLLE - FACON S.A.
Ambachtenstraat 58 - B-8870 Izegem (Industriezone Abele)
Tel. +32 (0)51 30 80 54 - Fax + 32 (0)51 30 99 78 - HRK 1823
info@muyllefacon.be - www.rubiomonocoat.com

Remarks:

- Any overlapping can be removed! Spray clean water on the floor and polish with a polisher or scrubby with a **red RMC Pad**.
- Any overlapping **WILL NOT** be removed when applying the oil. It is important to remove any overlapping areas before applying the oil.
- If any wood fibres are still upright, you will need to grind these using a floor polisher equipped with a beige pad. Afterwards, vacuum thoroughly.

ADVICE:

- Switch off the floor heating 48 hours before application.
- Do not use in combination with water based finishing products!
- Do not apply as a covering or film-forming layer!
- Difficult to apply on herringbone parquet.

CONSUMPTION:

1 L = 15 - 20 m², depending on the sort of wood and the preparation.

These usages are merely indicative. It is always recommended to make a sample in order to calculate the exact usage.

TECHNICAL CHARACTERISTICS:

Physical state at 20 °C: liquid

Flash point [°C]: N/A

Density: between 1 kg/L and 1,16 kg/L according to colour

VOC content: 0 g/L

Solubility in water: 100 %

STORAGE:

The product can be stored for up to 12 months.

Store in dry conditions, in the original packaging, at a temperature of 5 to 25°C.

The product is frost sensitive, use frost-free storage and transport only.

PACKAGING:

Bottle 100 ml, can 1 L, 2,5 L and 5 L



Rubio WoodCream

Protecting the natural beauty of wood

Rubio WoodCream is a breathable hydrophobic wax-based cream that colours and protects wood and makes it water-repellent. The hydrophobic Rubio WoodCream technology in combination with its unique cream structure offers both on product as on application level important benefits. This moisture-regulating cream provides a water-repellent and self-cleaning wood protection. The long contact technology ensures a perfect absorption of the cream into the wood's pores, without covering them, thus ensuring the wood's natural moisture balance and structure.

Rubio WoodCream gives wood surfaces a semi-transparent, aged, or covering look and is available in 3 colour collections: The Grey Collection, the Traditional Collection, and the Scandinavian Collection. A transparent version (#0) is also available in order to create a non-coloured effect. While this version has no UV-filter it allows the wood to age naturally, but it still protects the wood and makes it water-repellent. This transparent version will also protect already aged wood.

Depending on the chosen colour, wood type and orientation of the vertical wood, the colour will last between 5 to 10 years. After about 5 years, the pearl effect (water-beading) will gradually diminish.

If you want to decrease the colour intensity of the existing Rubio WoodCream colours, you can dilute them with **Rubio WoodCream Softener**.



ATTENTION

Adding Rubio WoodCream Softener reduces the UV resistance of the product. This can cause premature discolouration. This discolouration effect depends on the amount of Rubio WoodCream Softener added.

PRODUCT INFORMATION

› Unique characteristics

- Wax-based cream
- Hydrophobic cream
- Low environmental impact
- VOC free
- Non film-forming, does not flake off
- Water-repellent with pearl effect
 - The pearl effect makes the surface self-cleaning
 - The water-repellent and self-cleaning effect reduce the risk of micro-organism growth (algae, molds, fungi) and frost damage
- Breathable and moisture-regulating
 - The wood pores remain open; this allows the wood to breath and guarantees an optimal moisture-regulation
- Cream structure
- Penetrates deep into the subsoil
- Low usage: 50 to 80 g/m² per layer, depending on the absorption of the substrate
- Easy to apply on all vertical wooden surfaces
- Easier to apply on other paint systems and surfaces than other paints and wood treatment products (no dripping, no masking tape, easy to apply overhead)
 - Can be applied in 1 or 2 layers depending on the look you want

REMARK

The wood pores remain open; this allows the wood to breath and guarantees an optimal moisture-regulation.
Rubio WoodCream is water-repellent and self-cleaning, reducing the risk of micro-organism growth (algae, molds, fungi).

› Technical characteristics

- Chemical basis: wax based
- Physical state: cream
- Density: 950-1050 g/L (transparent – colours)
- pH: 8.0 - 9.0
- Gloss level: semi matt
- Drying time: depending on the climatic conditions: ± 12 hours
- Touch dry after 30 minutes
- A second layer can be applied after 3 hours
- The pearl effect already starts after 3 hours
- VOC-free

TECHNICAL INFORMATION

Rubio WoodCream is a breathable hydrophobic wax-based cream that colours and protects the wood and makes it water-repellent. The wax-based cream leaves no film behind, so that the porosity remains open and therefore the vapour permeability is retained. Wood fibres have a capillary effect that allows water to be easily absorbed. By applying a wax-hydrophobic agent to the pore walls, this capillary effect is converted into a water-repellent effect, but without reducing the opening of the pores necessary for vapour diffusion. Air and water vapour are let through just as before.

The cream structure of the wax-based cream creates a long contact time of the product with the wood. This gives the capillary effect of the wood enough time to absorb the active water-repellent ingredients. This creates a very deep penetration into the wood, which benefits the durability of the water-repellent effect. This allows the wood to be coloured and made water-repellent in one layer. If you want to achieve a visually more covering colour effect, this can easily be done by applying a second layer without changing the properties of the cream. However covering the system is applied, this technology will ensure the natural look and feel of the wood.

› Storage

The product can be stored up to 24 months. Store in dry conditions and in the original unopened packaging. Keep away from frost.

› Packaging

- Can 100 ml, 1 L, 2,5 L, 5 L and 20 L

› Consumption

Depending on the type of substrate: 12-20 m²/L

These usages are merely indicative. Results depend on wood type and method of preparation. It is always recommended to make a sample in order to calculate the exact usage.

› Colours

Colours shown are on Pine.

The colours shown are for reference only and are not binding.



APPLICATION INFORMATION

› On site application

Range of use:

- Wood outdoors - vertical wood application
- Wood moisture level: max. 18%
- Wood elements without ground contact according to EN 335-1, appl. class 2 and 3
- Building elements without dimensional stability: e.g. fences, framework, carports, wood sidings
- Building elements with limited dimensional stability: e.g. shutters, profiled boards, garden sheds

› Preparation

- Application temperature: 10°C – 30°C
- Ensure that the vertical wood is dry and clean
- In case of extremely soiled and oily wood or mildew stains, the wood must be cleaned with a mixture of 10% Rubio Monocoat Exterior Wood Cleaner and water. The wood must be thoroughly rinsed with water after the use of Rubio Monocoat Exterior Wood Cleaner before application.

Consult the accompanying technical data sheet before use.

› Instructions for use

Manual application

A. On new wood

- STEP 1.** Prepare the surface in order to achieve the desired result (planed, sanded wire brushed...)
- STEP 2.** Remove sanding dust from the surface and wipe dry.
- STEP 3.** Stir Rubio WoodCream well before applying it (undiluted).
- STEP 4.** Apply carefully and evenly, to the vertical surface with a block brush suitable for water-based products, in the direction of the wood. Work in zones of 3 to 4 boards in the direction of the wood fibre. It's best to work wet in wet. Spread out the product in one go with the application brush.
- STEP 5.** In case a more covering result is required you can apply a second layer after at least 3 hours. Since the first layer is already water-repellent, the second layer will not adhere to the first layer as easily. We recommend spreading the product with the block brush on the first layer in one smooth movement and go over it several times.

a. Creating an aged/transparent effect on new wood

- STEP 1.** Prepare the surface in order to achieve the desired result (planed, sanded wire brushed...)
- STEP 2.** Remove sanding dust from the surface and wipe dry.
- STEP 3.** Stir Rubio WoodCream well and **dilute it with the Rubio WoodCream Softener** in order to create a more transparent effect (proportion: max 1 to 1).
- STEP 4.** Apply carefully and evenly to the vertical surface with a block brush suitable for water-based products, in the direction of the wood. Work in zones of 3 to 4 boards in the direction of the wood fibre. It's best to work wet in wet. Spread out the product in one go with the application brush.

REMARK

- In order to create an **aged effect** on new wood a colour from the **Grey Collection** must be diluted with the Rubio WoodCream Softener.
- In order to create a more **transparent effect** (when desired) a Rubio WoodCream colour must be **diluted** with the **Rubio WoodCream Softener**. Add Rubio WoodCream Softener until the desired effect is achieved. The maximum proportion is 1: 1.
- In order to create a **non-coloured effect** you can use the colour **Transparent #0** (undiluted) from the **Grey Collection**. While this version has no UV-filter it allows the wood to age naturally, but it still protects the wood and makes it water-repellent.

B. In case of renovation/refreshing Rubio WoodCream

- STEP 1.** Clean the surface by using water at low pressure and a soft brush; there is no need for sanding.
- STEP 2.** Stir Rubio WoodCream well and dilute it with the Rubio WoodCream Softener in a ratio from 9 parts Rubio WoodCream and 1 part Rubio WoodCream Softener. You can adjust this ratio to max. 1 part Rubio WoodCream and 1 part Rubio WoodCream Softener to achieve the desired result.
- STEP 3.** Apply it carefully and evenly, to the vertical surface with a block brush suitable for water beaded products, in the direction of the wood. Work in zones of 3 to 4 boards in the direction of the wood fibre. It's best to work wet in wet. Spread out the product in one go with the application brush.

C. In case of renovation on older non-Rubio products

- STEP 1.** In case of extremely soiled and oily wood or mildew stains, the wood must be cleaned with a mixture of 10% Rubio Monocoat Exterior Wood Cleaner and water. The wood must be thoroughly rinsed with water after the use of Rubio Monocoat Exterior Wood Cleaner before application. Consult the accompanying technical data sheet before use.
- STEP 2.** Remove all loose coatings or wood fibres (sanding, steel, or bras brush)
- STEP 3.** Remove sanding dust from the surface and wipe dry.
- STEP 4.** Stir Rubio WoodCream well before applying it (undiluted), carefully and evenly, to the vertical surface with a block brush suitable for water beaded products, in the direction of the wood. Work in zones of 3 to 4 boards in a horizontal direction. It's best to work wet in wet. Spread out the product in one go with the application brush.
- STEP 5.** Apply a second layer in order to prevent gloss differences between raw wood and patches where the old coating was still present.

Industrial application

If you want to apply this product in an industrial manner, we advise you to get in contact with our technical care team.

› **Maintenance information**

In general we recommend a yearly visual check-up just after winter season.

Please check for the presence of the following three points:

- a. Dirt & green deposits; clean with low pressure water and soft brush
- b. Fading out of colours
- c. Diminishing pearl effect

If necessary (concerning point b./c.), apply a maintenance coat according the instructions. The frequency of maintenance depends on the weather conditions:

- In normal weather conditions: every 5 years
- In extreme weather conditions: every 3 years
- In ideal circumstances, this can take significantly longer: up to 10 years

Normal climates: when the colour fades, apply a maintenance coat of Rubio WoodCream with Rubio WoodCream Softener in a ratio from 9 parts Rubio WoodCream and 1 part Rubio WoodCream Softener to max. 1 part Rubio WoodCream and 1 part Rubio WoodCream Softener to achieve the desired result. Consult the technical data sheet for more information.

Frequency according to exposure, geographical situation, solar orientation of the treated wood, wood type, and desired shade. Waterfront, seaside, pilling, wetland, and marshland ... sometimes requiring a more frequent maintenance.

› **Maintenance instructions**

- STEP 1.** The wood must be cleaned with a mixture of 10% Rubio Monocoat Exterior Wood Cleaner and water. After the use of Rubio Monocoat Exterior Wood Cleaner, clean the surface by using water at low pressure and a soft brush; there is no need for sanding. Consult the accompanying technical data sheet before use.
- STEP 2.** Stir Rubio WoodCream well and dilute it with the Rubio WoodCream Softener in a ratio from 9 parts Rubio WoodCream and 1 part Rubio WoodCream Softener to max. 1 part Rubio WoodCream and 1 part Rubio WoodCream Softener in order to achieve the desired result.
- STEP 3.** Apply it carefully and evenly, to the vertical surface with a block brush suitable for water beaded products, in the direction of the wood. Work in zones of 3 to 4 boards in the direction of the wood fibre. It's best to work wet in wet. Spread out the product in one go with the application brush.

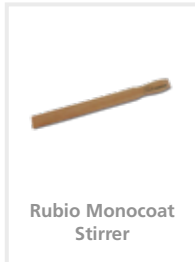
› **Tips & Tricks**

- Avoid direct sunlight on the surface.
- In case of high temperatures (> 30°C) or when there is no shadow, we recommend diluting Rubio WoodCream with Rubio WoodCream Softener in order to make the product easier to apply and to allow it to dry less quickly.
- On rough and very absorbent wood surfaces, we recommend diluting Rubio WoodCream with Rubio WoodCream Softener so you can easily apply Rubio WoodCream on the surface. For a more covering effect you can apply a second layer.

› Tools & accessories



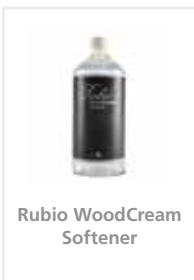
Rubio Monocoat
Brush



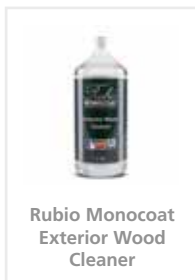
Rubio Monocoat
Stirrer

Clean the tools with water after application.

› Related products



Rubio WoodCream
Softener



Rubio Monocoat
Exterior Wood
Cleaner

Check the packaging and the safety data sheet for more details.

For our complete assortment of products for the protection and colouring of interior and exterior wood, please visit www.rubimonocoat.com

YOUR DISTRIBUTOR:

LIABILITY: It is the user's responsibility to establish, through his own tests, whether the product is suitable for the chosen application. In no case can Muylle Facon BV be held liable for any consequential damage. The information above may be subject to changes, which will be published in the updated versions of the technical data sheet. We cannot be held liable for poor results due to causes that are not related to the quality of the product. This technical information has been drawn up based on the currently available information and knowledge. The most recent technical data sheets can be requested or are available on the website. **Date of TDS: 29/01/2021. Check the safety information before using the product.**



Rubio[®] MONOCOAT

MUYLLE  FACON

Muylle Facon BV
Ambachtenstraat 58
8870 Izegem (BELGIUM)

Phone +32 (0) 51 30 80 54
Fax +32 (0) 51 30 99 78
info@muyllefacon.be

www.rubimonocoat.com

Rubiomonocoat SOAP

DESCRIPTION:

Rubio Monocoat Soap is a soap for the regular cleaning of oiled surfaces. Removes all dirt and grease thoroughly, without leaving a film. Keeps the mat, natural look of the wood. **Rubio Monocoat Soap** is very concentrated and hence very economical.

INSTRUCTIONS:

1. Vacuum the surface.
2. Pour a maximum of 50 to 100 ml of **RMC Soap** in a bucket with 10 L of water.
3. Clean the surface with a mop.
4. Allow to dry: +/- 15 minutes.

Important: Do not leave any water on the floor surface, a damp-clean is sufficient. Do not walk on the floor until it is completely dry.

Tip: The best working method is with two buckets: one with the soap mixture and one with clean water to rinse the dirt out of the mop.

TECHNICAL CHARACTERISTICS:

Physical state: liquid
 Odour: citrus fruits
 Colour: yellow
 Density: 1,01 kg/L
 pH: 6 - 8

STORAGE:

The product can be stored for up to 12 months. Store in dry conditions and in the original packaging. Do not allow to freeze.

PACKAGING:

Bottle 1 L and 2 L

PROVIDED BY:

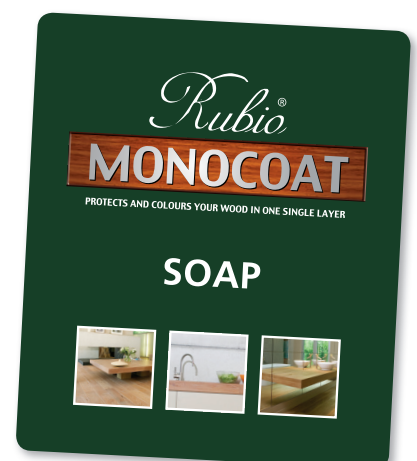
DISCLAIMER: It is the responsibility of the user to determine through own testing whether the product is suited for its chosen application. Muylle Facon NV is not liable for any resultant damage. The above information may be subject to amendments, which will be published in revised versions of the technical sheet. We waive all responsibility for unsatisfactory results that are due to causes unrelated to the quality of the product. This technical information has been collected on the basis of current information and knowledge. The most recent technical sheets can be requested or are available on the website.



Consult the safety sheet before use.
 Date TDS: 04/08/17

MUYLLE  **FACON**

MADE IN BELGIUM by N.V. MUYLLE - FACON S.A.
 Ambachtenstraat 58 - B-8870 Izegem (Industriezone Abele)
 Tel. +32 (0)51 30 80 54 - Fax + 32 (0)51 30 99 78 - HRK 1823
 info@muyllefacon.be - www.rubiomonocoat.com



RMC SUNPRIMER HWP

Rubio[®] Monocoat Sunprimer HWP is a water-based primer which limits the effects of UV light and which can be used as an optional primer when applying a finishing coat of RMC Hybrid Wood Protector on vertical exterior wood.

RMC Sunprimer HWP - which is always applied in the same colour as the RMC Hybrid Wood Protector - guarantees the deep penetration of colour pigments which results in an intense colour.



PRODUCT INFORMATION

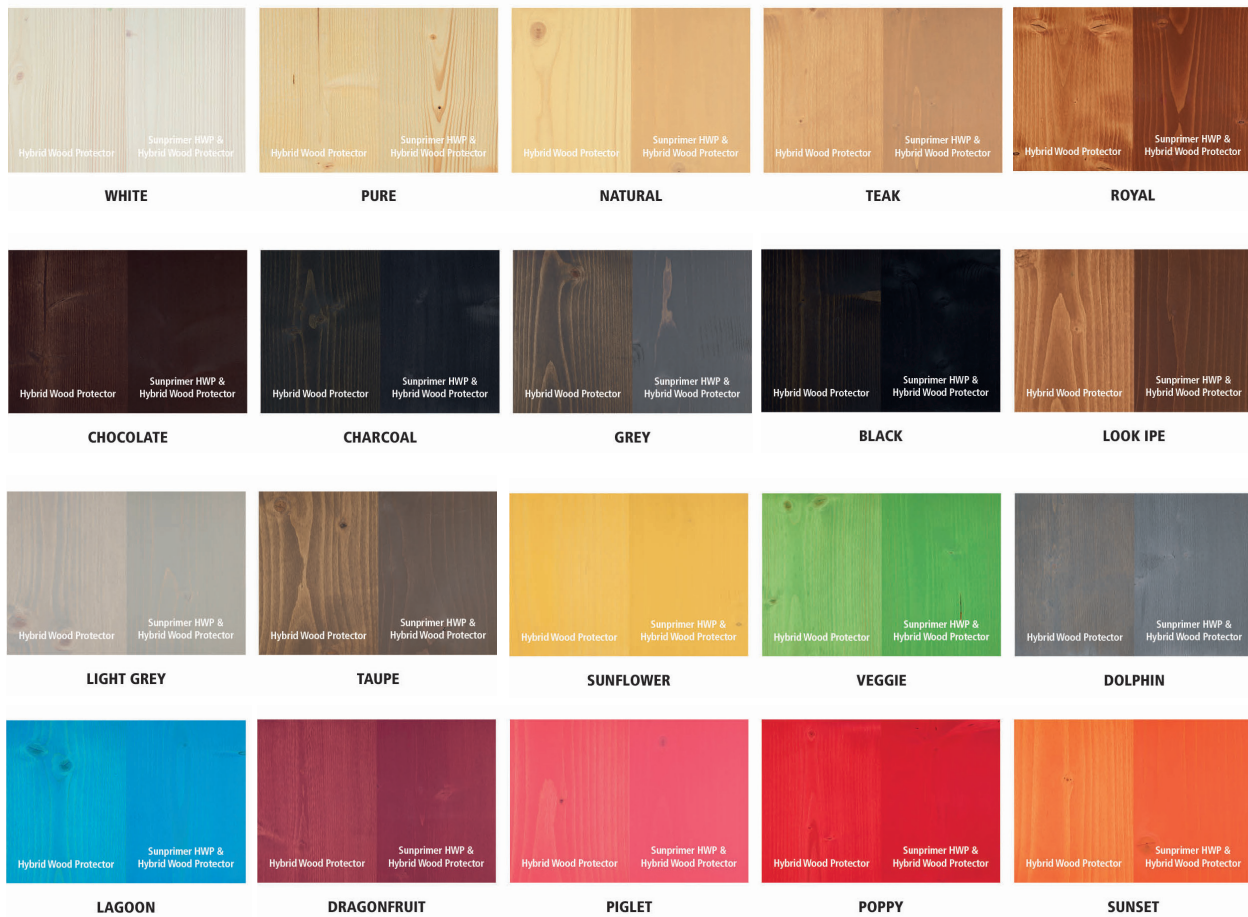
› Unique characteristics

- Ready for use
- Retains the natural look of the wood
- Provides a deep and intense colour
- Provides better cover and a more uniform effect
- 20 unique colours
- Only applicable on vertical wood

› Technical characteristics

- Physical state: liquid
- Odour: characteristic
- Density: > 1 kg/L
- VOC content: 0 g/L

› Colours



PLEASE NOTE:

The pigment in the various RMC Hybrid Wood Protector colours contributes to the protection of the wood from greying. The colour PURE is not pigmented, however, which will cause the natural greying to occur faster.

› **Packaging**



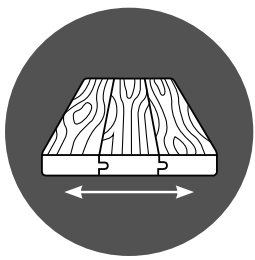
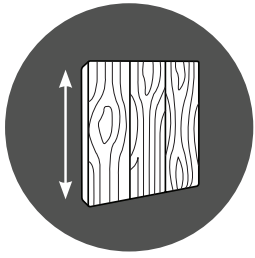
Bottle of 20ml, 100ml and 1L, can of 5L and 20L

› **Storage**

The product can be stored for up to 12 months in a dry place and in the original packaging. Do not allow to freeze.

APPLICATION INFORMATION

› **Application possibilities**

		 RMC Hybrid Wood Protector	 RMC Sunprimer HWP & RMC Hybrid Wood Protector
 Horizontal	Deckings	✓	NO
	Tables, chairs,...	✓	NO
 Vertical	Façades	✓	✓
	Windows, doors,...	✓	✓

› Instructions

- STEP 1.** Apply only on raw, totally untreated vertical wood. It is essential to remove completely all previous treatment products. Always clean the surface using RMC Exterior Wood Cleaner before starting.
- STEP 2.** Stir the RMC Sunprimer HWP well. Apply a small amount of RMC Sunprimer HWP uniformly using a gun, brush, roller or cloth. Work in zones of 5 - 10 m².
- STEP 3.** Leave to dry for 24 hours (the surface should be dry to the touch).
- STEP 4.** Now apply one coat of RMC Hybrid Wood Protector in the same colour as the RMC Sunprimer HWP you have used. Please consult the oil's user guide for how to apply this product correctly!

› Tips

- Always clean the wood using RMC Exterior Wood Cleaner before applying RMC Sunprimer HWP. This will significantly increase the finish's durability.
- Always use the same colour of RMC Sunprimer HWP and RMC Hybrid Wood Protector.

INDUSTRIAL APPLICATION

If you want to apply this product in an industrial manner, we advise you to get in contact with our technical care team. The technical data sheet for industrial use is available on demand.

For industrial applications, it is obligatory to add 10% of RMC Accelerator to the RMC Hybrid Wood Protector.

› Coverage

The consumption of RMC Sunprimer HWP varies according to the following parameters:

1. Wood density: the softer the wood, the higher the consumption.
2. Humidity content - the wood should be dry. Don't apply if the humidity content of the wood exceeds 12%.
3. Ambient temperature - should be between 15 °C and 27 °C, with a relative humidity of less than 80%. Do not apply in full sun or at high temperatures.
4. Preparation - the preparation method of the wood - sandpapered, brushed or shaved - has an influence on the consumption.

Indication of the usage: 10 to 35 m²/L

Optimum protection is achieved by thoroughly saturating the surface being treated with RMC Sunprimer HWP. Please note: remove any excess product from the surface you are treating once the wood stops absorbing the product. RMC Sunprimer HWP may not be used as a film-forming product! Consumption may be higher when performing renovation work.

These usages are merely indicative. Results depend on wood type and method of preparation. It is always recommended to make a sample in order to calculate the exact usage.

› Tools



*The used tools can be cleaned with RMC Cleaner.

› Related products



Check the packaging and the safety data sheet for more details.

For our complete assortment of products for the protection and colouring of interior and exterior wood, please visit www.rubimonocoat.com

YOUR DISTRIBUTOR:

LIABILITY: It is the user's responsibility to establish, through his own tests, whether the product is suitable for the chosen application. In no case can Muylle Facon NV be held liable for any consequential damage. The information above may be subject to changes, which will be published in the updated versions of the technical data sheet. We cannot be held liable for poor results due to causes that are not related to the quality of the product. This technical information has been drawn up based on the currently available information and knowledge. The most recent technical data sheets can be requested or are available on the website. **Date of TDS: 08/06/2017. Check the safety information before using the product.**



Rubio[®]
MONOCOAT

MUYLLE  FACON

Muylle Facon BVBA
Ambachtenstraat 58
8870 Izegem (BELGIË)

Tel. +32 (0) 51 30 80 54
Fax +32 (0) 51 30 99 78
info@muyllefacon.be

www.rubimonocoat.com

RMC SURFACE CARE

Rubio® Monocoat Surface Care is the handy, ready to use version of RMC Soap. RMC Surface Care is suitable for fast cleaning of small floor surfaces and local spots on wooden floors, coffee tables, counter tops,...

PRODUCT INFORMATION

› Technical characteristics

- Physical state at 20°C: liquid
- Colour: light yellow
- Odour: citrus fruits
- pH value: 7 - 8,5
- Density: 1 kg/L
- Solubility in water: complete

› Packaging

Ecospray 750 ml

› Storage

The product can be stored for up to 12 months. Store in dry conditions and in the original packaging. Do not allow to freeze.

APPLICATION INFORMATION

› Instructions

STEP 1. Spray Rubio® Monocoat Surface Care on to the surface to be cleaned.

STEP 2. Wipe dry with a mop or the RMC Microfiber Pad.

STEP 3. Allow the surface to dry for approximately 15 minutes.

› Tips & Tricks

- Thoroughly rinse the microfiber cloth on a regular basis.
- After oiling the floor, we recommend cleaning the floor after a few weeks with only clean water.
- Do not make any scraping motions while rubbing dry.

› Tools



Check the packaging and the safety data sheet for more details.

For our complete assortment of products for the protection and colouring of interior and exterior wood, please visit www.rubimonocoat.com

YOUR DISTRIBUTOR:

LIABILITY: It is the user's responsibility to establish, through his own tests, whether the product is suitable for the chosen application. In no case can Muylle Facon NV be held liable for any consequential damage. The information above may be subject to changes, which will be published in the updated versions of the technical data sheet. We cannot be held liable for poor results due to causes that are not related to the quality of the product. This technical information has been drawn up based on the currently available information and knowledge. The most recent technical data sheets can be requested or are available on the website. **Date of TDS: 10/04/2018. Check the safety information before using the product.**



Rubio[®] MONOCOAT

MUYLLE  FACON

Muyllé Facon BVBA
Ambachtenstraat 58
8870 Izegem (BELGIË)

Tel. +32 (0) 51 30 80 54
Fax +32 (0) 51 30 99 78
info@muylléfacon.be

www.rubimonocoat.com

RMC TANNIN REMOVER

Rubio® Monocoat Tannin Remover is a ready-to-use product for removing stains and spots on wood caused by a reaction to acid and water. These spots tend to occur after coming into contact with moisture and metal (for example, a wet can of Coca-Cola on the kitchen worktop). The product can be used on untreated, oiled and waxed surfaces.

Also suitable for outdoor applications!



PRODUCT INFORMATION

› Specific stain remover for:

- Black/tannin stains e.g. rings/stains from cans, flower pots, etc.
- Also:
 - After water damage on parquet.
 - In case of efflorescence on exterior wood (on the bottom of gates, doors, on walls).

› Technical characteristics

- Physical state (20°C): semi-viscous, liquid
- Look/colour: opaque
- Odour: odourless
- Density (20°C) (ASTM D 4052): 1,01 kg/L
- Solubility: soluble in water

› Packaging

Ecospray 0,5L and bottle 1L

› Storage

The product can be stored for up to 12 months. Store in dry conditions and in the original packaging. Do not allow to freeze.

APPLICATION INFORMATION

› Instructions

STEP 1. Spray RMC Tannin Remover on the spot or stain.

STEP 2. Allow several minutes for absorption.

STEP 3: Remove excessive product by dabbing with an absorbent cloth.

STEP 4. To remove stubborn stains, it is recommended to repeat the process until the desired result is achieved.

STEP 5. Allow the surface area to dry.

› Tips & tricks

- We highly recommend that you first test the product on a non-visible part of the wood, to test the effect of the product on your specific wood type. We are not responsible for any consequences due to incorrect use.
- Do not make any scraping motions while removing the excess product.
- Do not apply to surfaces which a reactive pre-treatment was previously applied to.
- After a treatment with RMC Tannin Remover, you may need to apply some oil in the original colour on the spot.
- If the surface becomes too stain-sensitive, maintain with RMC Oil Plus 2C (in the original colour applied) to repair both colour and protection.

› Tools



RMC Cloths
cotton – set 1kg

› Related products



RMC Surface Care



RMC Oil Plus 2C

Check the packaging and the safety data sheet for more details.

For our complete assortment of products for the protection and colouring of interior and exterior wood, please visit www.rubiomonocoat.com

YOUR DISTRIBUTOR:

LIABILITY: It is the user's responsibility to establish, through his own tests, whether the product is suitable for the chosen application. In no case can Muylle Facon NV be held liable for any consequential damage. The information above may be subject to changes, which will be published in the updated versions of the technical data sheet. We cannot be held liable for poor results due to causes that are not related to the quality of the product. This technical information has been drawn up based on the currently available information and knowledge. The most recent technical data sheets can be requested or are available on the website. **Date of TDS: 04/04/2018. Check the safety information before using the product.**



Rubio[®] MONOCOAT

MUYLLE  FACON

Muylle Facon BVBA
Ambachtenstraat 58
8870 Izegem (BELGIË)

Tel. +32 (0) 51 30 80 54
Fax +32 (0) 51 30 99 78
info@muyllefacon.be

www.rubiomonocoat.com

Rubio Monocoat UNIVERSAL MAINTENANCE OIL

**0%
VOC**

DESCRIPTION:

Rubio Monocoat Universal Maintenance Oil is universal maintenance oil used for protecting and refreshing the color of oiled wooden surfaces. The maintenance frequency depends on the intensity of the floor traffic. It is advisable to apply this treatment just before the colour fades.

RMC Universal Maintenance Oil will nourish the wood, give it a fuller look (satin sheen) and increase the fluid resistance.

Maintenance with the **RMC Oil Plus 2C** in its original colour should be done when the treated surface starts to show too much wear and tear or if the colour needs to be repaired.

INSTRUCTIONS:

No professional expertise is required to treat your floor with **RMC Universal Maintenance Oil**.

1. Eliminate dirt and dust from the floor.
2. Clean the floor thoroughly with **RMC Soap** and water. Rinse well with water to eliminate any soap residues. Leave it to dry completely.
3. Manual application – Apply the oil using a cloth, brush, or sponge. Mechanical application – Apply the oil using a floor polisher and a beige colored pad. Treat areas of preferably 2 to 4 m². Each treated area should be wiped dry using kitchen tissue or a cotton cloth within 15 minutes. When using a floor polisher, wipe dry using a white pad.
4. Ensure the room is well-ventilated. The floor should be dry after 6 - 8 hours.

During the first week clean only using a wet cloth. Later, **RMC Soap** may be used.

COVERAGE:

0,5 l = 75 – 100 m² (depending on wear)

Use very little product to prevent the floor from becoming sticky.

These usages are merely indicative. Results depend on wood type and method of preparation. It is always recommended to make a sample in order to calculate the exact usage.

TECHNICAL SPECIFICATIONS:

Basis: a mixture of natural oils and hard wax

Consistency: liquid

Flash point cc (astm d93): > 65 °C

Density: 0.93 - 1.4 g/cm³

VOC: 0 g/L

STORAGE:

The product can be stored for up to 12 months. Store in dry conditions and in the original packaging.

PACKAGING:

Can 0,5 L

WARNING:

The product may NOT be diluted!
Cloths, saturated with oil, may spontaneously combust.
After usage, they need to be soaked in water before disposal.

PROVIDED BY:

DISCLAIMER: It is the responsibility of the user to determine through own testing whether the product is suited for its chosen application. Muylle Facon NV is not liable for any resultant damage. The above information may be subject to amendments, which will be published in revised versions of the technical sheet. We waive all responsibility for unsatisfactory results that are due to causes unrelated to the quality of the product. This technical information has been collected on the basis of current information and knowledge. The most recent technical sheets can be requested or are available on the website.



Consult the safety sheet before use.

Date TDS: 22/08/16

MUYLLE FACON



MADE IN BELGIUM by N.V. MUYLLE - FACON S.A.
 Ambachtenstraat 58 - B-8870 Izegem (Industriezone Abele)
 Tel. +32 (0)51 30 80 54 - Fax + 32 (0)51 30 99 78 - HRK 1823
 info@muyllefacon.be - www.rubiomonocoat.com

