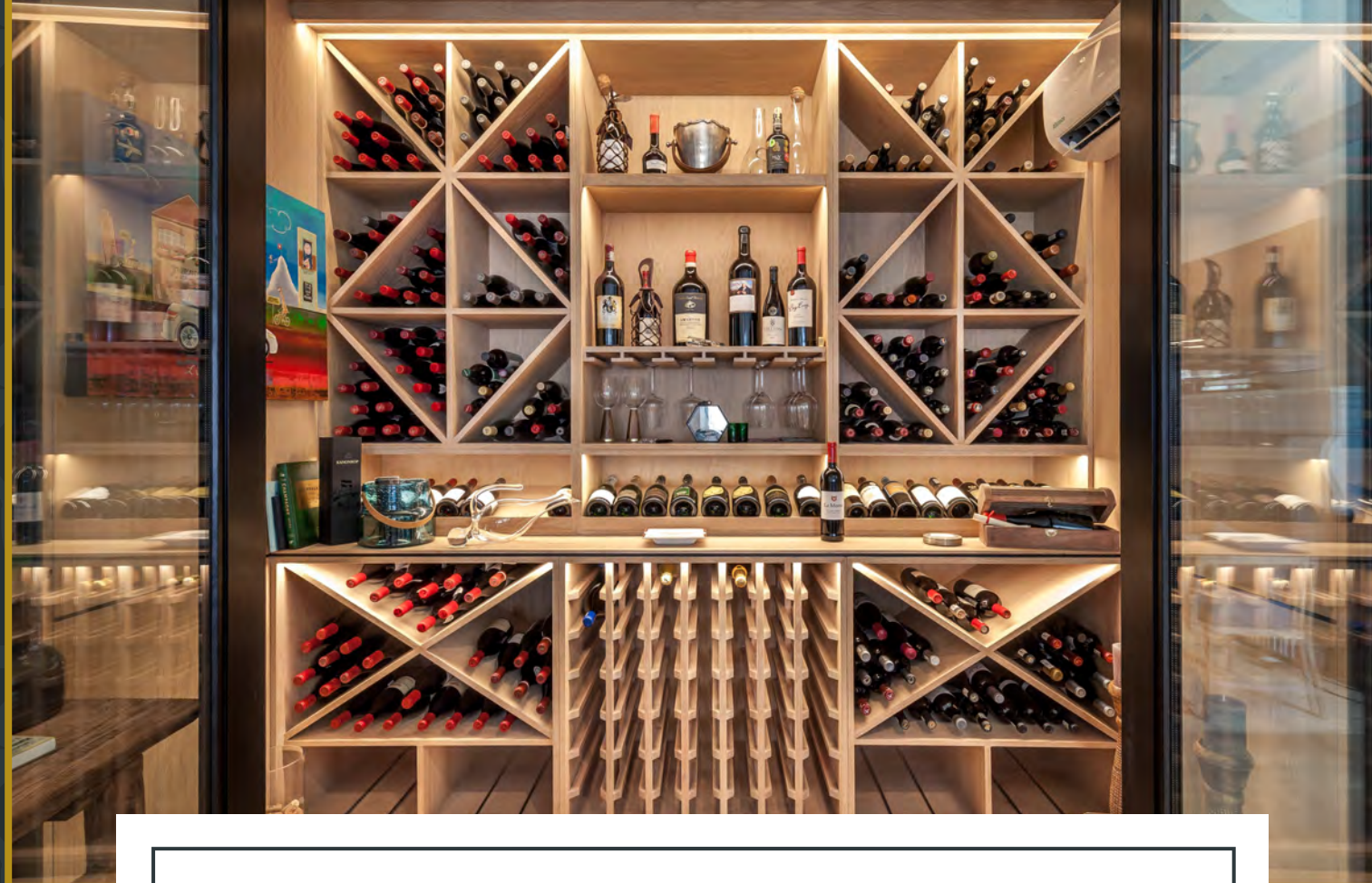


THE WINE ROOM

PREMIUM WINE CELLARS, APPLIANCES & PRODUCTS

Introduction

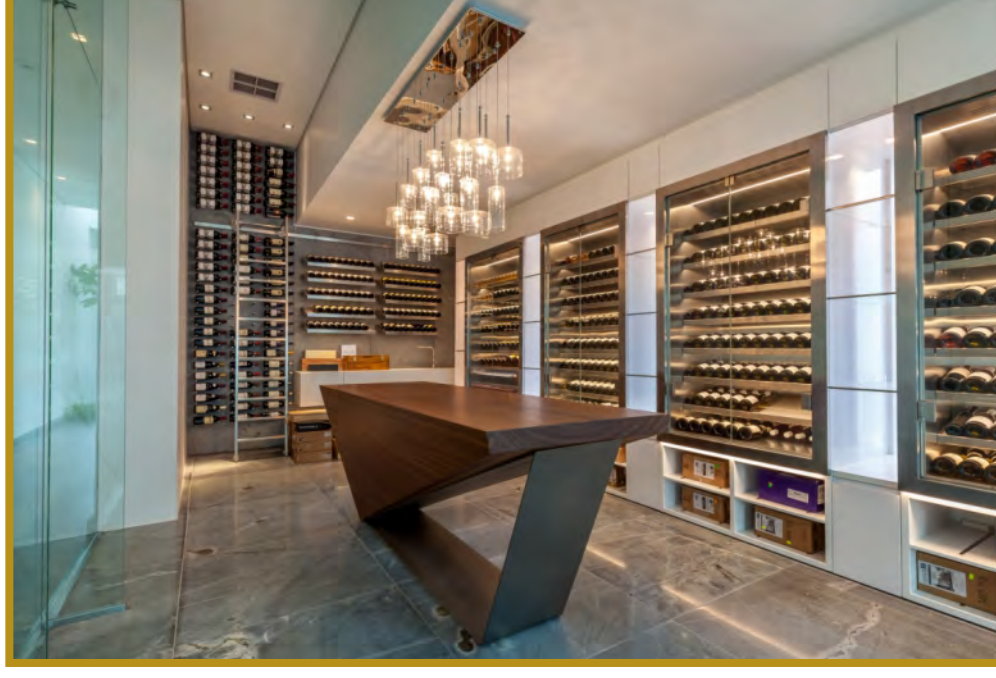


LET US INTRODUCE OURSELVES

The Wine Room offers state-of-the-art storage and display solutions for all your wine cellaring needs. We are a South African company and together with our partners, Spiral Cellars UK, we offer unparalleled depth of technical and design expertise, as well as over 30 years in creating upmarket international cellars.

At The Wine Room, we design, craft and fit beautiful yet technical wine cellars and displays, as well as import and install upmarket engineered-concrete Spiral Cellars. We also offer an extensive range of wine appliances and accessories, as well as specialist Climate Control solutions.

[TELL ME MORE](#)



BESPOKE WINE CELLARS AND BARS

Whether you choose a large walk-in room or cellar to house an investment collection of first grove wines, or a compact serving temperature cabinet for your local Pinot range, The Wine Room is able to accommodate your spatial & capacity requirements. Our design team will tailor-make your own space to your preferred décor taste & material palette, together with our team of specialist crafts persons & on-site project managers.

The Wine Room offers a wide range of climate control systems to ensure correct temperature and humidity conditions for your wine. Our custom wine cellars are also complimented with correct cellar-graded glazing & discreet integrated LED lighting. Each project is handled by our team of interior designers & project managers, who liaise with clients, architects & contractors throughout the process.

[TELL ME MORE](#)

SPIRAL CELLARS

The Wine Room is the exclusive distributor of Spiral Cellars in South Africa. A Spiral Cellar is an incredibly space-efficient underground cellar and can be installed under any ground floor room without requiring an existing basement. Built from engineered concrete, a Spiral Cellar can either be fitted cleanly into a finished room, or form part of a new house build. Spiral Cellars are available in range depths of 2m, 2.5m and 3m, accommodating a bottle capacity of between 1380-1800 bottles.

The cellars can be fitted in original concrete finish or a skimmed contemporary white finish. To top off your cellar, we offer a variety of doors including manually-operated timber units, to concealed tiled or timber doors, to fully-motorised triple-glazed round and rectangular hinged doors. Installation usually takes no more than between 2-3 weeks; and creates surprisingly little mess. All cellars are fitted with a climate control unit at 15-17°C, relative humidity.

[TELL ME MORE](#)



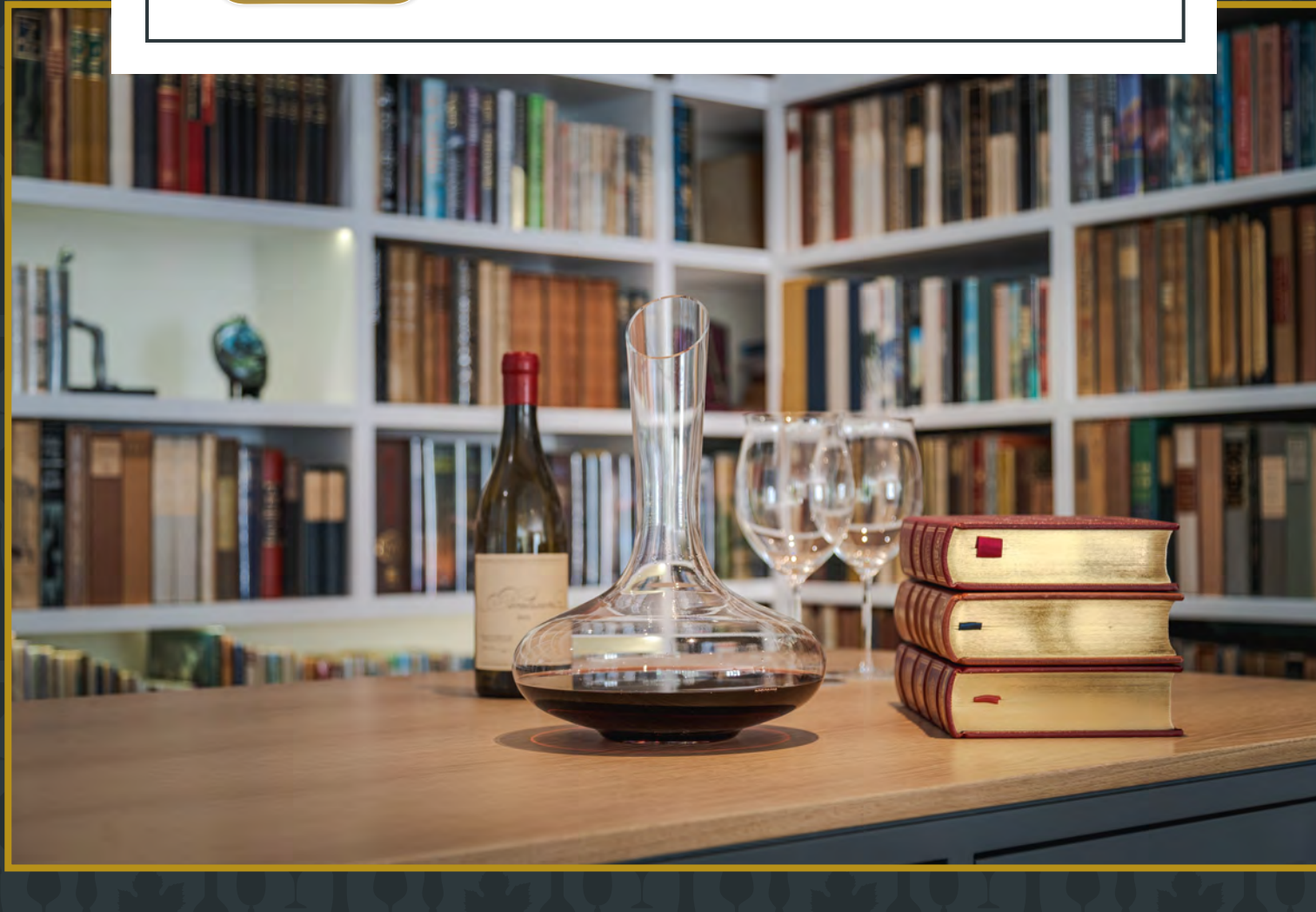
APPLIANCES & FURNITURE

The Wine Room stocks an exclusive and extensive range of appliances and accessories relating to wine cellars and bars. Our unique service includes an up-front non-obligatory proposal for your home; through to delivery and install, with optional unpacking and staging of your items, ready to use. We do not charge a sourcing fee and all our products are available at competitive pricing.

A selected introduction to our range includes Enomatic, Coravin and Zzysh wine preservation and aerators; Bottega Del Vino, Riedel and Zalto crystal stemware and decanters; Liebherr and Gugganau wine and beverage fridges and humidors; as well as U-line ice machines and Kaelo champagne bottle coolers.

We also undertake custom furniture commissions including poker tables, tasting tables and library furniture.

[TELL ME MORE](#)



View our Cape Town SPIRAL CELLAR SHOW UNIT by appointment only
☎ +27 21 788 2050 ✉ info@thewineroom.co.za 🌐 www.thewineroom.co.za

📘 facebook 📷 instagram