



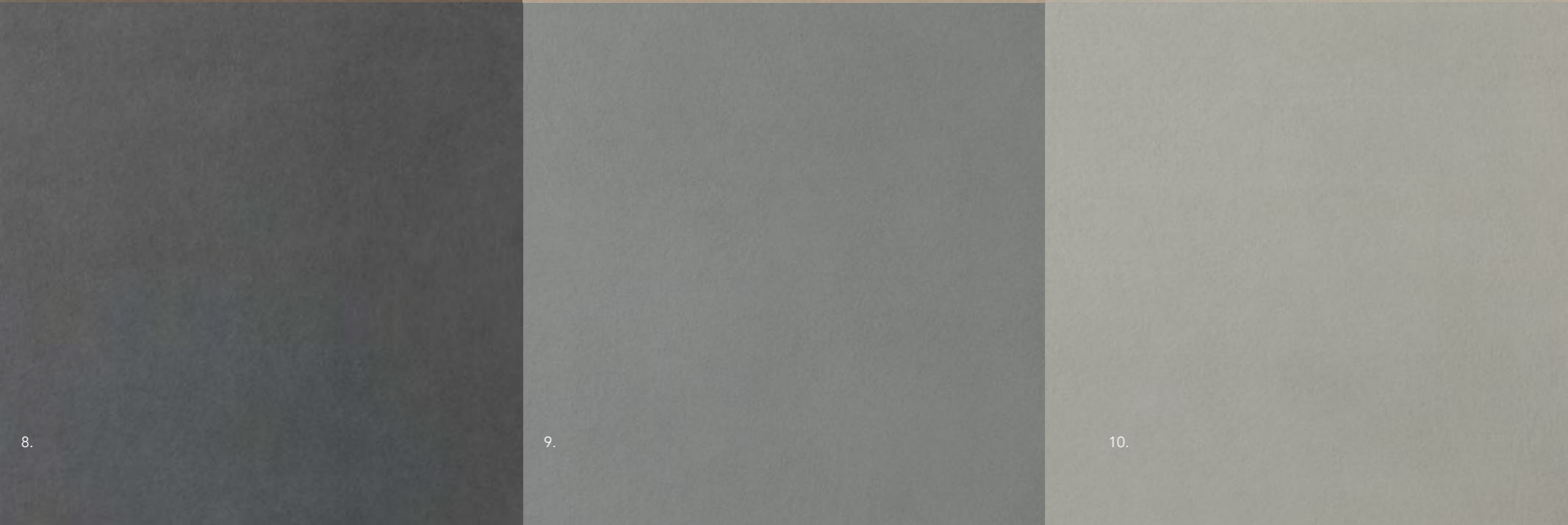
presents the NUANCES tile range



**11 POWERFUL  
& IMMERSIVE  
COLOURS.**

Nuances

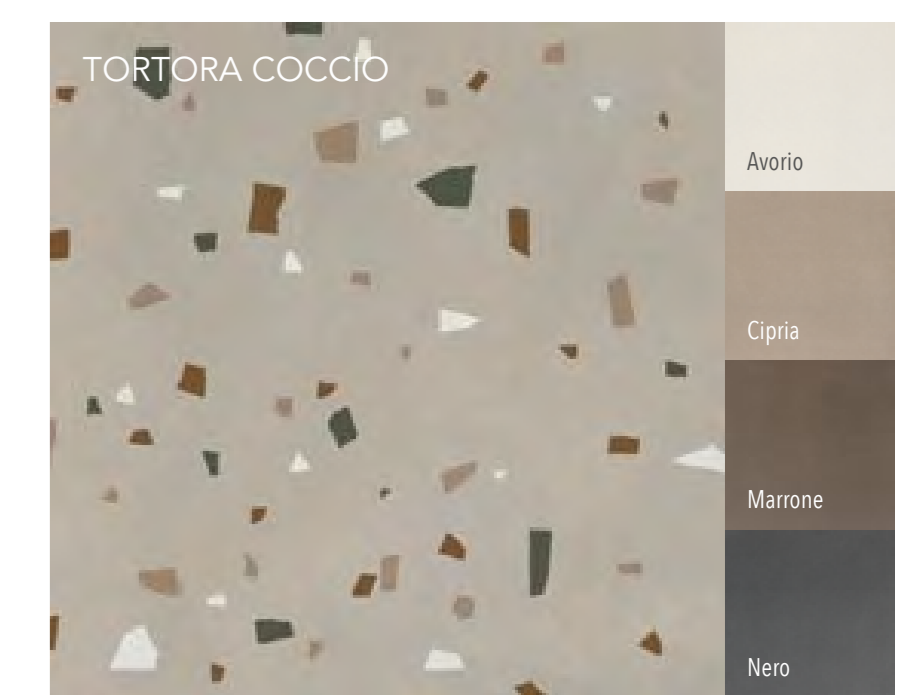
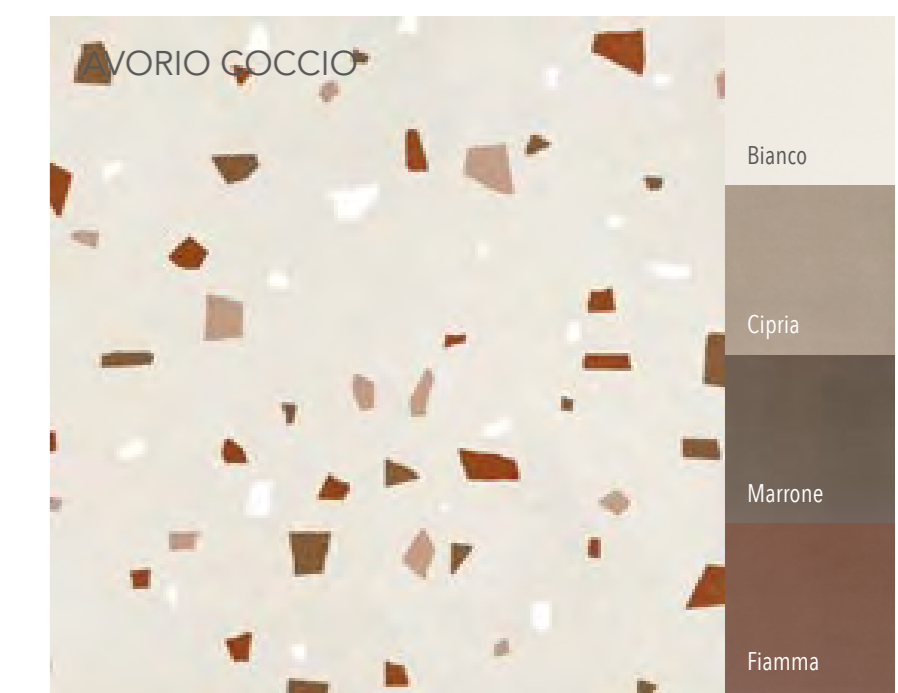
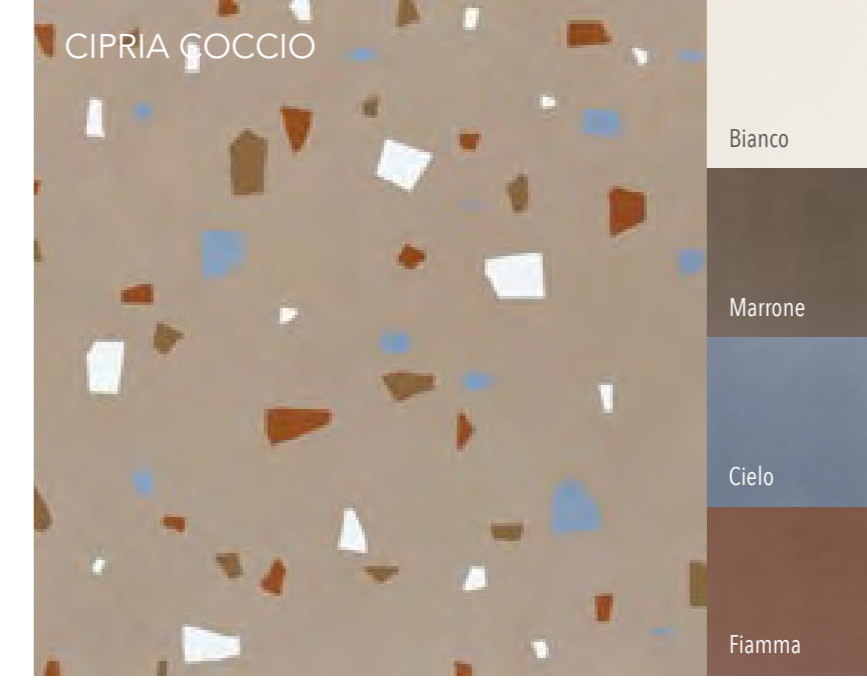
1. fiamma
2. salvia
3. cielo
4. marrone
5. cipria
6. tortora
7. avorio
8. nero
9. antracite
10. grigio
11. bianco



**COCCIO,  
FRAGMENTED  
SHADE.**

80x80 cm  
31 1/2" x 31 1/2"

60x120 cm  
23 1/2" x 47 1/4"





EVERY DETAIL  
MATTERS.





NATURAL AND  
HONEST MATERIALITY.





FLEXIBLE  
DESIGN.



WALL: CIELO 40x80 - COCCIO BIANCO 80x80 - BIANCO 40x80  
WASHBASIN: ITALGRANITILIVE - CIELO PLAN - CIELO BASIN  
CABINET: ITALGRANITILIVE - CIELO DOUBLE LOFTY  
FLOOR: CIELO 80x80

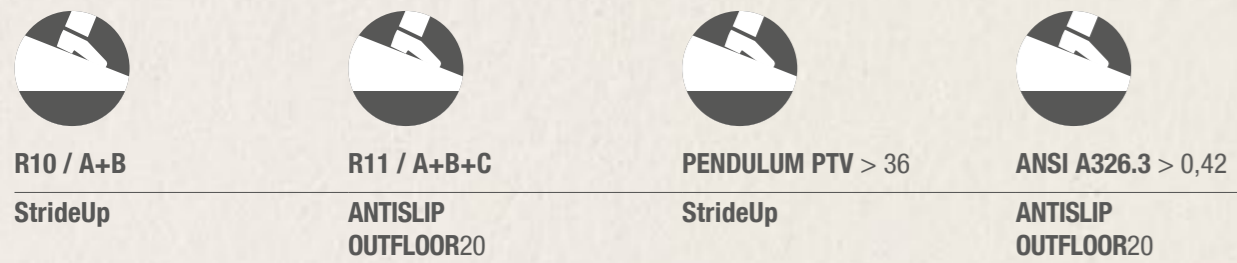


WALL: ANTRACITE 120x260x0,6  
FLOOR: ANTRACITE 60x120 20mm



FLOOR: COCCIO GRIGIO 80x80 20mm  
TABLE: NERO 120x260x0,6  
WALL: ANTRACITE 120x260x0,6





— 6 mm **Mega**  
LABORATORIO CLASSE

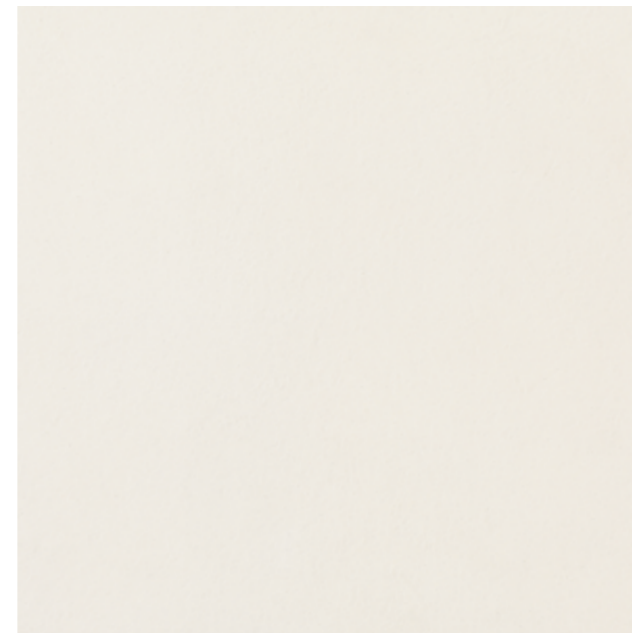
BIANCO

Naturale / Matte - UGL  
120x260x0,6



— 9 mm **StrideUp**

StrideUp - UGL  
120x120 - 60x120 - 80x80 - 40x80 - 60x60 - 30x60



Antislip - UGL  
60x120

— 6 mm **Mega**  
LABORATORIO CLASSE

ANTRACITE

Naturale / Matte - UGL  
120x260x0,6

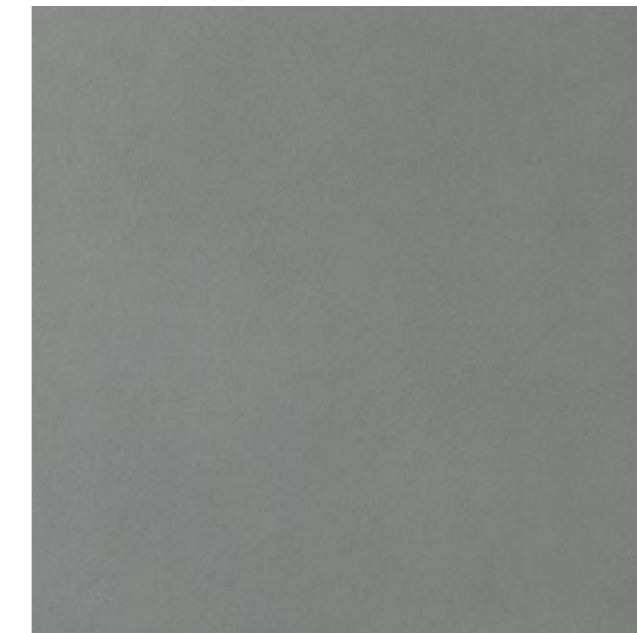


— 9 mm **StrideUp** + ■ 20 mm **Outfloor20**

StrideUp - UGL  
120x120 - 60x120 - 80x80 - 40x80 - 60x60 - 30x60

Antislip - UGL  
60x120

Outfloor20 - UGL  
60x120 - 80x80



— 6 mm **Mega**  
LABORATORIO CLASSE

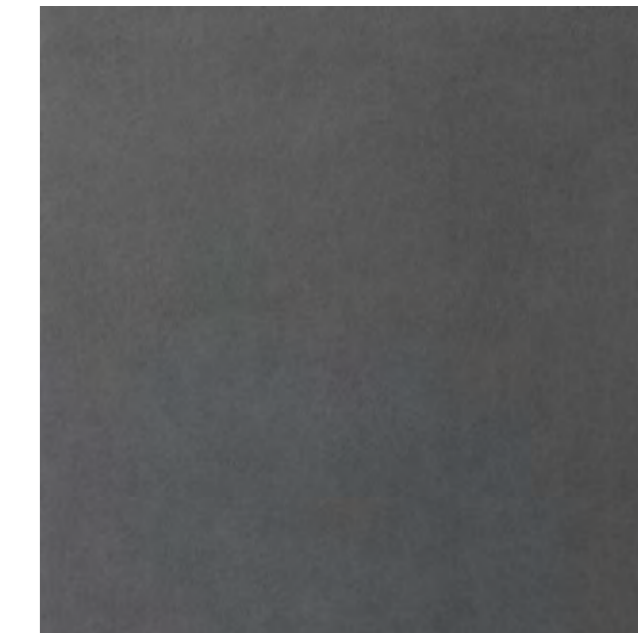
NERO

Naturale / Matte - UGL  
120x260x0,6



— 9 mm **StrideUp**

StrideUp - UGL  
120x120 - 60x120 - 80x80 - 40x80 - 60x60 - 30x60



Antislip - UGL  
60x120

— 6 mm **MEGA**

— 9 mm **StrideUp**



SUPERFICIE SURFACE

120x260x0,6 cm  
47<sup>116</sup> x 102<sup>103</sup> x 1/4"

120x120 cm  
47<sup>116</sup> x 47<sup>116</sup>

60x120 cm  
23<sup>102</sup> x 47<sup>116</sup>

80x80 cm  
31<sup>102</sup> x 31<sup>102</sup>

40x80 cm  
15<sup>316</sup> x 31<sup>102</sup>

60x60 cm  
23<sup>102</sup> x 23<sup>102</sup>

30x60 cm  
11<sup>786</sup> x 23<sup>102</sup>

— 6 mm **MEGA**

— 9 mm **StrideUp**

■ 20 mm **Outfloor20**



SUPERFICIE SURFACE

120x260x0,6 cm  
47<sup>116</sup> x 102<sup>103</sup> x 1/4"

120x120 cm  
47<sup>116</sup> x 47<sup>116</sup>

60x120 cm  
23<sup>102</sup> x 47<sup>116</sup>

80x80 cm  
31<sup>102</sup> x 31<sup>102</sup>

40x80 cm  
15<sup>316</sup> x 31<sup>102</sup>

60x60 cm  
23<sup>102</sup> x 23<sup>102</sup>

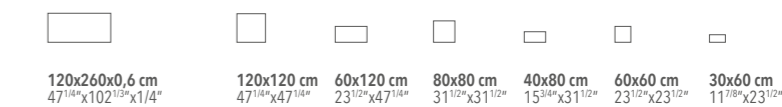
30x60 cm  
11<sup>786</sup> x 23<sup>102</sup>

60x120 cm  
23<sup>102</sup> x 47<sup>116</sup>

80x80 cm  
31<sup>102</sup> x 31<sup>102</sup>

— 6 mm **MEGA**

— 9 mm **StrideUp**



SUPERFICIE SURFACE

120x260x0,6 cm  
47<sup>116</sup> x 102<sup>103</sup> x 1/4"

120x120 cm  
47<sup>116</sup> x 47<sup>116</sup>

60x120 cm  
23<sup>102</sup> x 47<sup>116</sup>

80x80 cm  
31<sup>102</sup> x 31<sup>102</sup>

40x80 cm  
15<sup>316</sup> x 31<sup>102</sup>

60x60 cm  
23<sup>102</sup> x 23<sup>102</sup>

30x60 cm  
11<sup>786</sup> x 23<sup>102</sup>



6 mm Mega

### AVORIO

Naturale / Matte - UGL  
120x260x0,6



9 mm StrideUp

StrideUp - UGL  
120x120 - 60x120 - 80x80 - 40x80 - 60x60 - 30x60

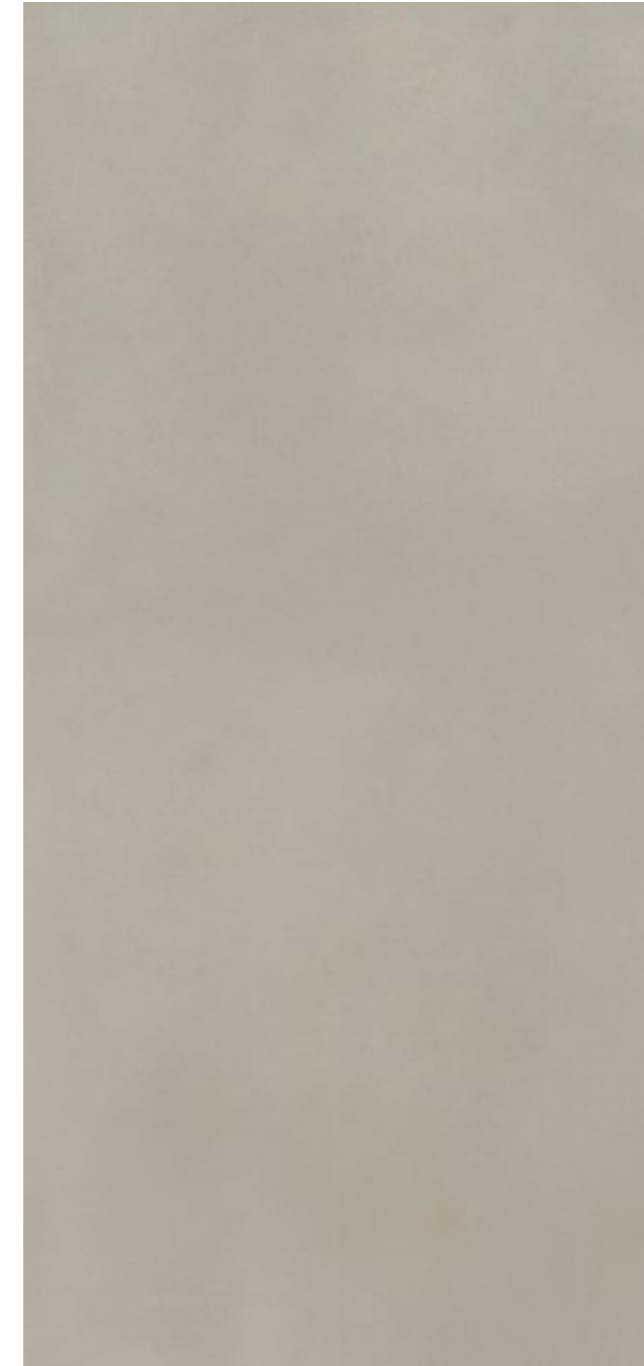
Antislip - UGL  
60x120



6 mm Mega

### TORTORA

Naturale / Matte - UGL  
120x260x0,6



9 mm StrideUp + 20 mm Outfloor20

StrideUp - UGL  
120x120 - 60x120 - 80x80 - 40x80 - 60x60 - 30x60

Antislip - UGL  
60x120

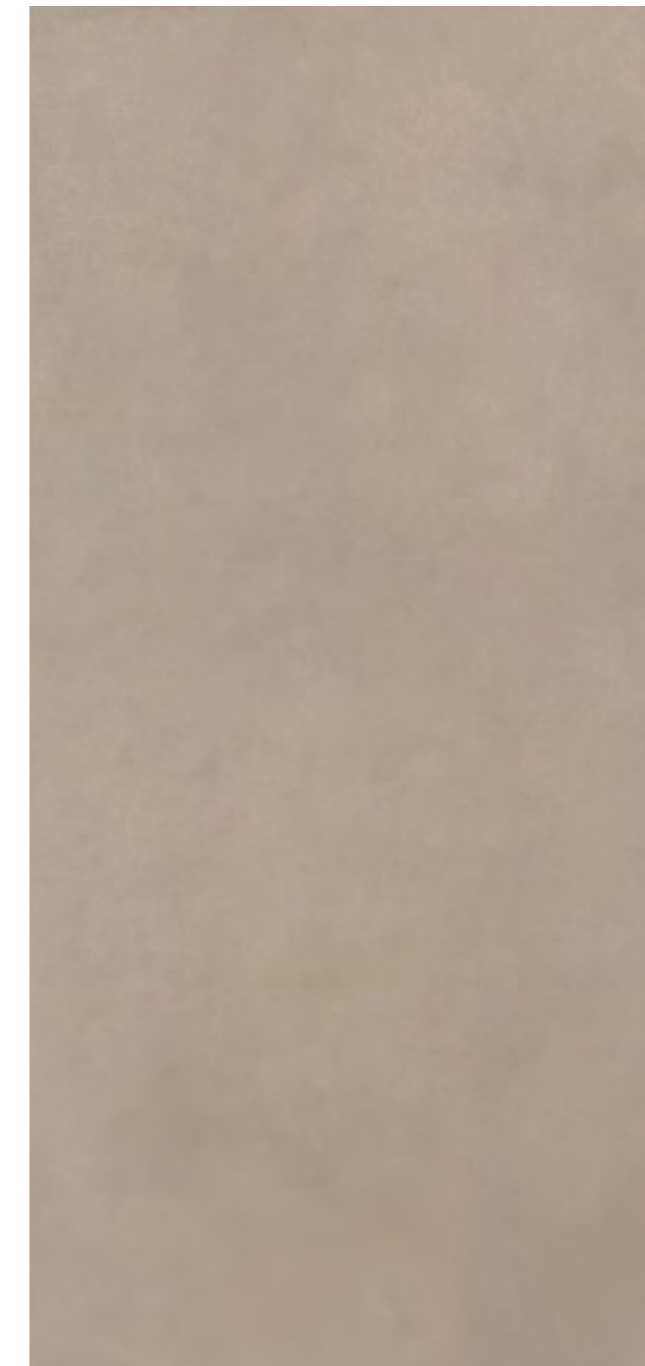
Outfloor20 - UGL  
60x120 - 80x80



6 mm Mega

### CIPRIA

Naturale / Matte - UGL  
120x260x0,6

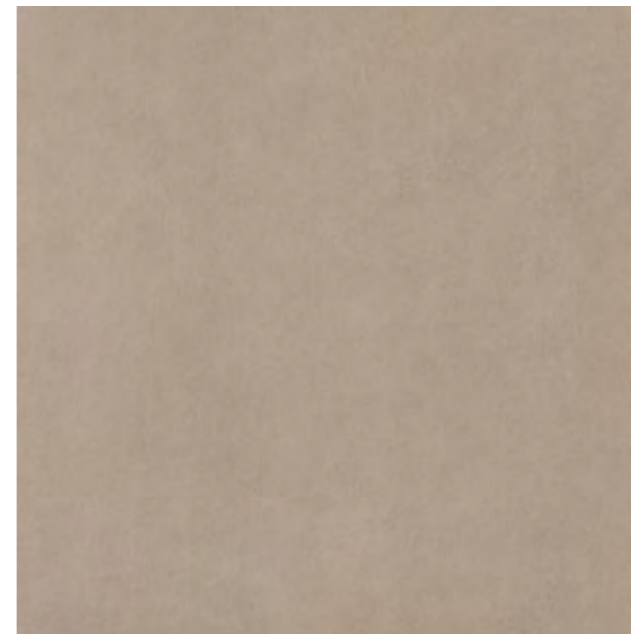


9 mm StrideUp + 20 mm Outfloor20

StrideUp - UGL  
120x120 - 60x120 - 80x80 - 40x80 - 60x60 - 30x60

Antislip - UGL  
60x120

Outfloor20 - UGL  
60x120 - 80x80



6 mm Mega

### MARRONE

Naturale / Matte - UGL  
120x260x0,6



9 mm StrideUp

StrideUp - UGL  
120x120 - 60x120 - 80x80 - 40x80 - 60x60 - 30x60

Antislip - UGL  
60x120



6 mm MEGA

9 mm StrideUp



SUPERFICIE SURFACE 120x260x0,6 cm 47<sup>116</sup> x 102<sup>116</sup> x 1/4"

120x120 cm 47<sup>116</sup> x 47<sup>116</sup>" 60x120 cm 23<sup>116</sup> x 47<sup>116</sup>" 80x80 cm 31<sup>116</sup> x 31<sup>116</sup>" 40x80 cm 15<sup>116</sup> x 31<sup>116</sup>" 60x60 cm 23<sup>116</sup> x 23<sup>116</sup>" 30x60 cm 11<sup>116</sup> x 23<sup>116</sup>"

6 mm MEGA

9 mm StrideUp

20 mm Outfloor20



SUPERFICIE SURFACE 120x260x0,6 cm 47<sup>116</sup> x 102<sup>116</sup> x 1/4"

120x120 cm 47<sup>116</sup> x 47<sup>116</sup>" 60x120 cm 23<sup>116</sup> x 47<sup>116</sup>" 80x80 cm 31<sup>116</sup> x 31<sup>116</sup>" 40x80 cm 15<sup>116</sup> x 31<sup>116</sup>" 60x60 cm 23<sup>116</sup> x 23<sup>116</sup>" 30x60 cm 11<sup>116</sup> x 23<sup>116</sup>" 60x120 cm 23<sup>116</sup> x 47<sup>116</sup>" 80x80 cm 31<sup>116</sup> x 31<sup>116</sup>"

6 mm MEGA

9 mm StrideUp

20 mm Outfloor20



SUPERFICIE SURFACE 120x260x0,6 cm 47<sup>116</sup> x 102<sup>116</sup> x 1/4"

120x120 cm 47<sup>116</sup> x 47<sup>116</sup>" 60x120 cm 23<sup>116</sup> x 47<sup>116</sup>" 80x80 cm 31<sup>116</sup> x 31<sup>116</sup>" 40x80 cm 15<sup>116</sup> x 31<sup>116</sup>" 60x60 cm 23<sup>116</sup> x 23<sup>116</sup>" 30x60 cm 11<sup>116</sup> x 23<sup>116</sup>" 60x120 cm 23<sup>116</sup> x 47<sup>116</sup>" 80x80 cm 31<sup>116</sup> x 31<sup>116</sup>"

6 mm MEGA

9 mm StrideUp



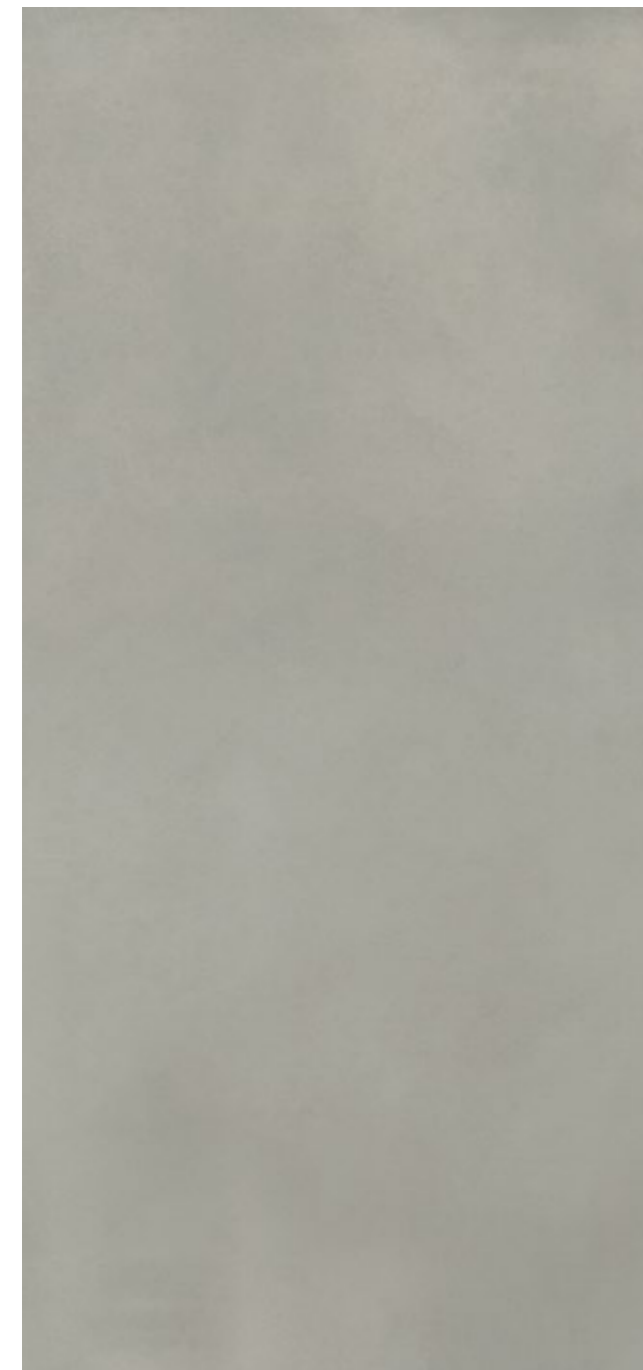
SUPERFICIE SURFACE 120x260x0,6 cm 47<sup>116</sup> x 102<sup>116</sup> x 1/4"

120x120 cm 47<sup>116</sup> x 47<sup>116</sup>" 60x120 cm 23<sup>116</sup> x 47<sup>116</sup>" 80x80 cm 31<sup>116</sup> x 31<sup>116</sup>" 40x80 cm 15<sup>116</sup> x 31<sup>116</sup>" 60x60 cm 23<sup>116</sup> x 23<sup>116</sup>" 30x60 cm 11<sup>116</sup> x 23<sup>116</sup>"

6 mm Mega

### GRIGIO

Naturale / Matte - UGL  
120x260x0,6

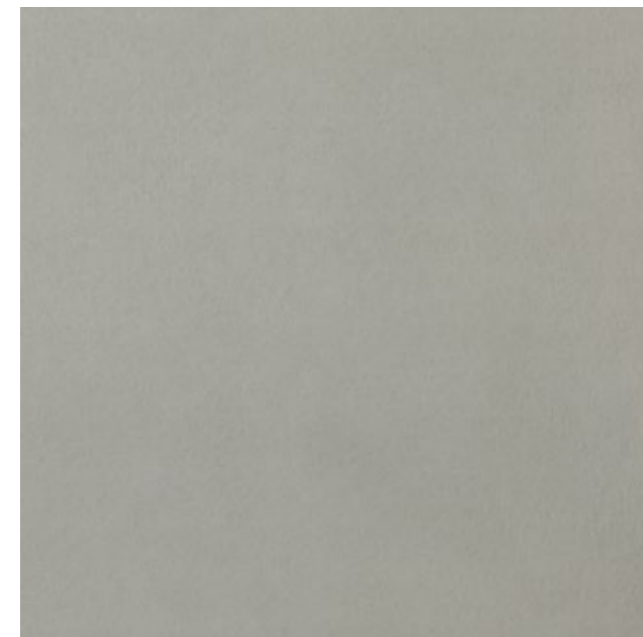


9 mm StrideUp + 20 mm Outfloor20

StrideUp - UGL  
120x120 - 60x120 - 80x80 - 40x80 -  
60x60 - 30x60

Antislip - UGL  
60x120

Outfloor20 - UGL  
60x120 - 80x80



6 mm Mega

### SALVIA

Naturale / Matte - UGL  
120x260x0,6



9 mm StrideUp

StrideUp - UGL  
60x120 - 80x80 - 40x80



6 mm Mega

### CIELO

Naturale / Matte - UGL  
120x260x0,6



9 mm StrideUp

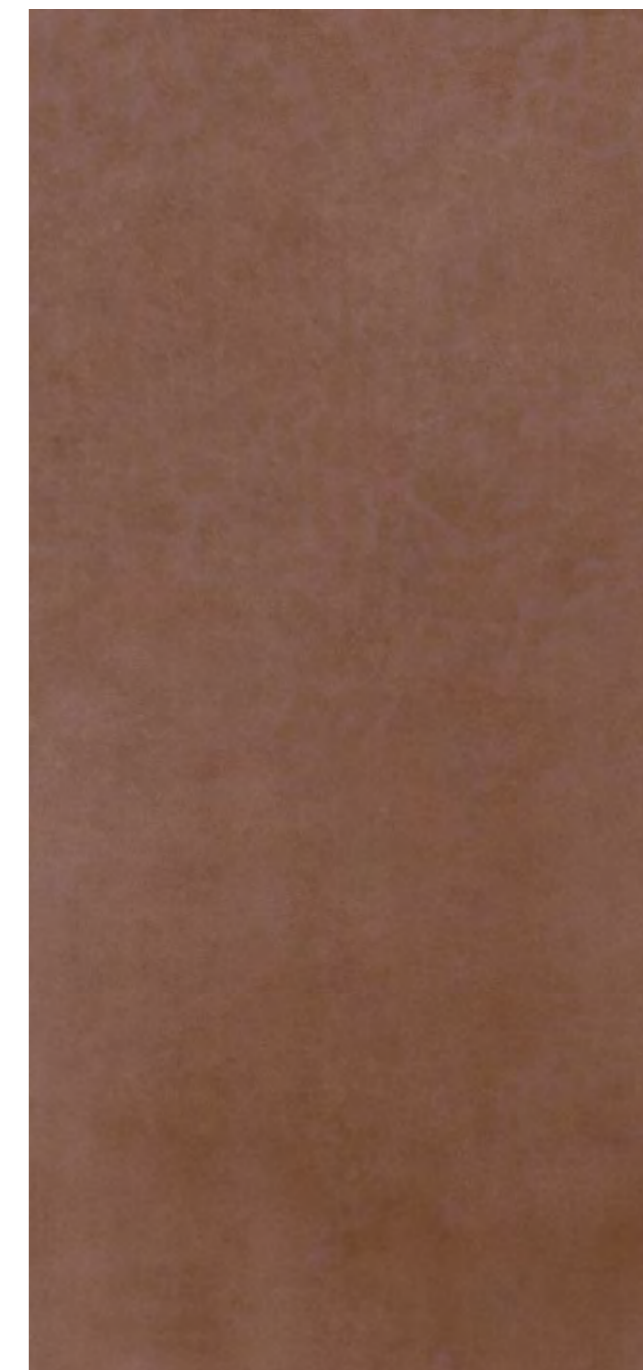
StrideUp - UGL  
60x120 - 80x80 - 40x80



6 mm Mega

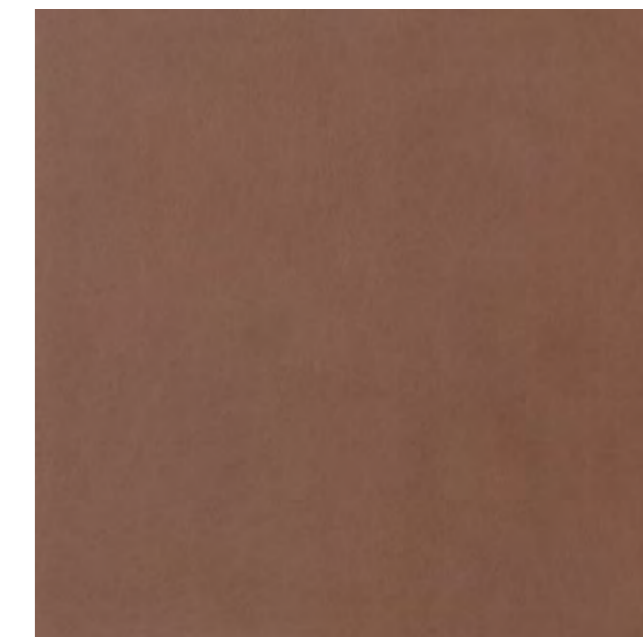
### FIAMMA

Naturale / Matte - UGL  
120x260x0,6



9 mm StrideUp

StrideUp - UGL  
60x120 - 80x80 - 40x80



6 mm MEGA 9 mm StrideUp 20 mm Outfloor20

SUPERFICIE SURFACE

120x260x0,6 cm 47 <sup>116</sup> x 102 <sup>116</sup> x 1/4"	120x120 cm 47 <sup>116</sup> x 47 <sup>116</sup> "	60x120 cm 23 <sup>116</sup> x 47 <sup>116</sup> "	80x80 cm 31 <sup>116</sup> x 31 <sup>116</sup> "	40x80 cm 15 <sup>116</sup> x 31 <sup>116</sup> "	60x60 cm 23 <sup>116</sup> x 23 <sup>116</sup> "	30x60 cm 11 <sup>116</sup> x 23 <sup>116</sup> "	60x120 cm 23 <sup>116</sup> x 47 <sup>116</sup> "	80x80 cm 31 <sup>116</sup> x 31 <sup>116</sup> "
---	---	--	---	---	---	---	--	---

6 mm MEGA 9 mm StrideUp

SUPERFICIE SURFACE

120x260x0,6 cm 47 <sup>116</sup> x 102 <sup>116</sup> x 1/4"	60x120 cm 23 <sup>116</sup> x 47 <sup>116</sup> "	80x80 cm 31 <sup>116</sup> x 31 <sup>116</sup> "	40x80 cm 15 <sup>116</sup> x 31 <sup>116</sup> "
---	--	---	---

6 mm MEGA 9 mm StrideUp

SUPERFICIE SURFACE

120x260x0,6 cm 47 <sup>116</sup> x 102 <sup>116</sup> x 1/4"	60x120 cm 23 <sup>116</sup> x 47 <sup>116</sup> "	80x80 cm 31 <sup>116</sup> x 31 <sup>116</sup> "	40x80 cm 15 <sup>116</sup> x 31 <sup>116</sup> "
---	--	---	---

6 mm MEGA 9 mm StrideUp

SUPERFICIE SURFACE

120x260x0,6 cm 47 <sup>116</sup> x 102 <sup>116</sup> x 1/4"	60x120 cm 23 <sup>116</sup> x 47 <sup>116</sup> "	80x80 cm 31 <sup>116</sup> x 31 <sup>116</sup> "	40x80 cm 15 <sup>116</sup> x 31 <sup>116</sup> "
---	--	---	---

■ 9 mm **StrideUp** + ■ 20 mm **Outfloor20**

## COCCIO

StrideUp - UGL  
60x120 - 80x80



Bianco Coccio

StrideUp - UGL  
60x120 - 80x80



Avorio Coccio

StrideUp - UGL  
60x120 - 80x80



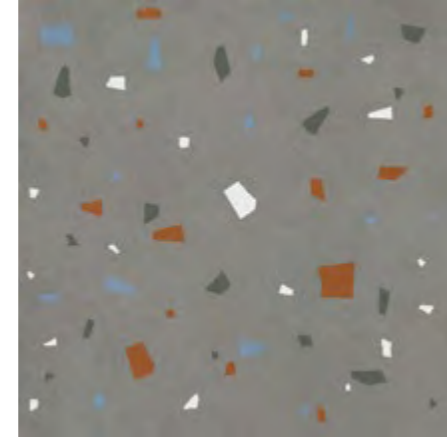
Grigio Coccio

StrideUp - UGL  
60x120 - 80x80



Tortora Coccio

StrideUp - UGL  
60x120 - 80x80



Antracite Coccio

StrideUp - UGL  
60x120 - 80x80

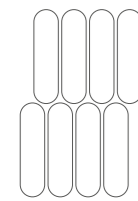


Cipria Coccio

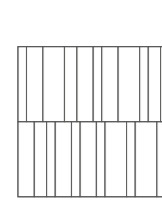
■ 9 mm **StrideUp**

## MOSAICI E DECORI

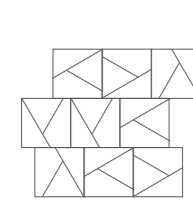
StrideUp - UGL



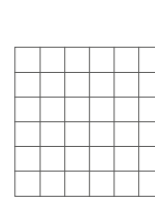
Mosaico Ovale  
19,5x37



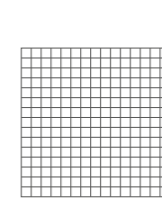
Mosaico Listelli  
30x30



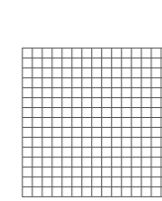
Mosaico Triangoli  
30x30



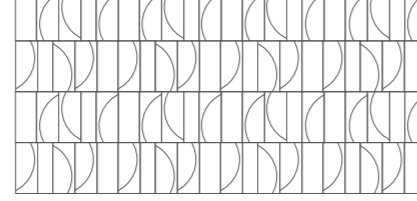
Mosaico A  
30x30



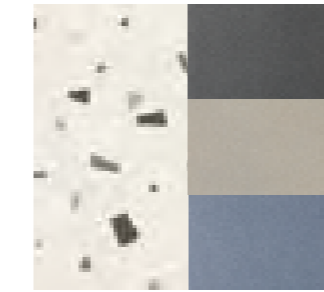
Mosaico B  
30x30



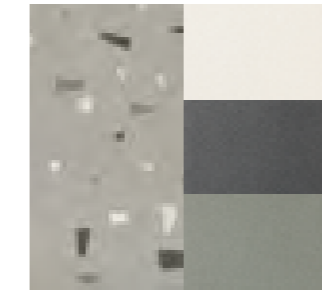
Mosaico Lacca  
30x30



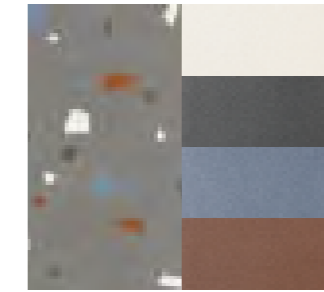
Decoro Lacca  
40x80



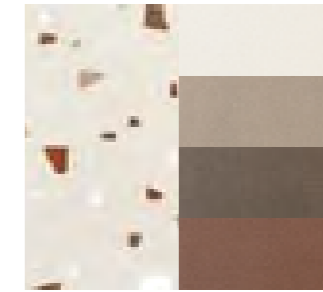
Bianco Coccio /  
Nero, Tortora, Cielo



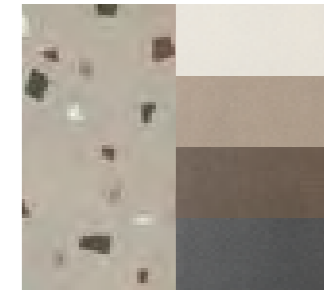
Grigio Coccio /  
Bianco, Nero, Salvia



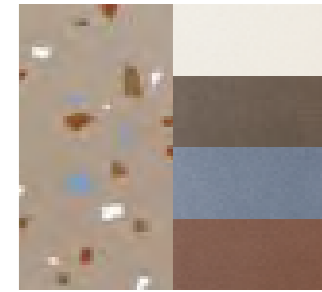
Antracite Coccio /  
Bianco, Nero, Cielo, Fiamma



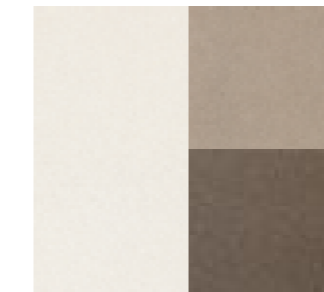
Avorio Coccio /  
Bianco, Cipria, Marrone,  
Fiamma



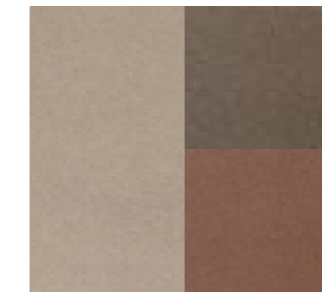
Tortora Coccio /  
Avorio, Cipria, Marrone,  
Nero



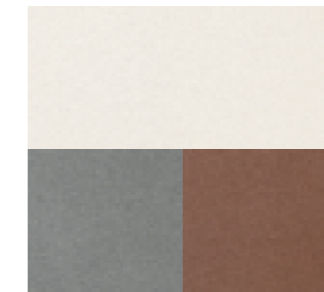
Cipria Coccio /  
Bianco, Marrone, Cielo,  
Fiamma



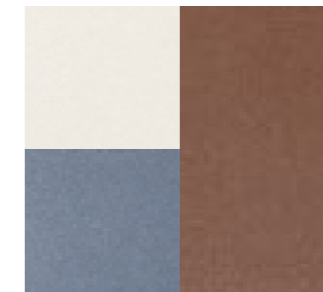
Bianco, Cipria, Marrone



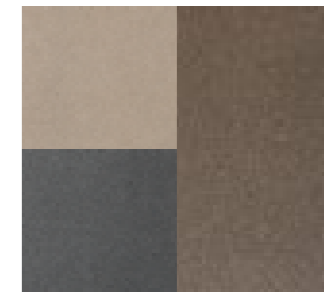
Cipria, Marrone, Fiamma



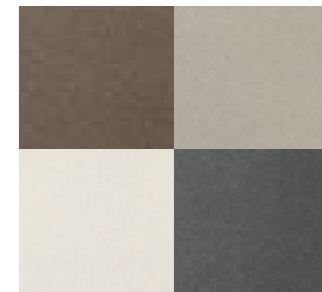
Bianco, Antracite, Fiamma



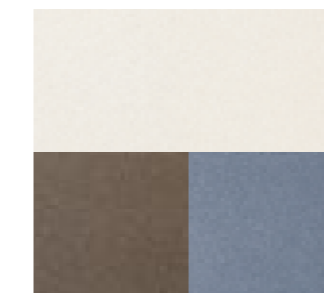
Bianco, Fiamma, Cielo



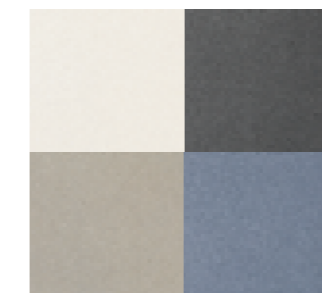
Cipria, Marrone, Nero



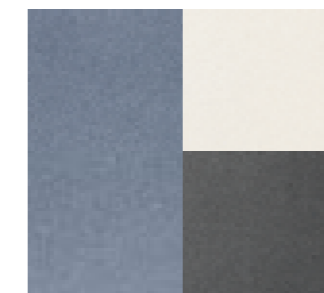
Marrone, Tortora, Avorio, Nero



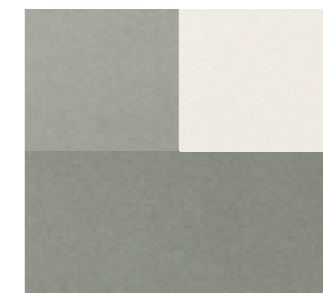
Bianco, Marrone, Cielo



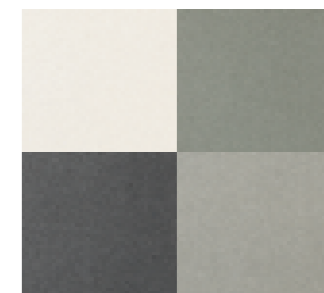
Bianco, Nero, Tortora, Cielo



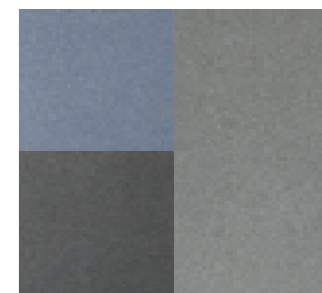
Cielo, Bianco, Nero



Grigio, Bianco, Salvia



Bianco, Salvia, Nero, Grigio



Cielo, Antracite, Nero

## STUCCHI CONSIGLIATI / RECOMMENDED GROUTS

Colori Colors	Bianco	Grigio	Antracite	Nero	Avorio	Tortora	Cipria	Marrone	Salvia	Cielo	Fiamma
Kerakoll	03	06	09	10	20	07	45	46	08	14	35
Mapei	130	112	113	119	111	110	133	136	113	172	142



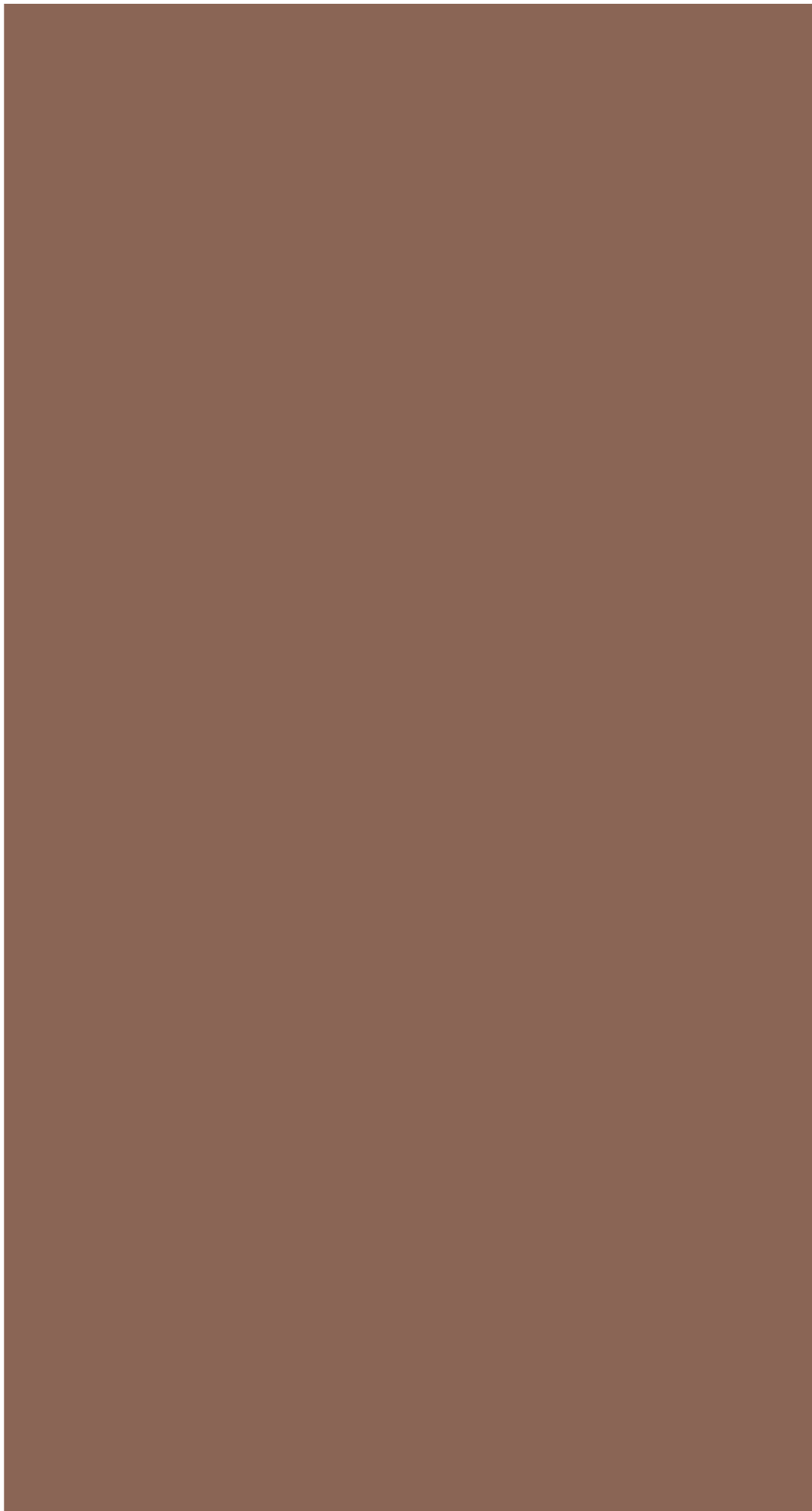
**TABELLE TECNICHE GRES PORCELLANATO**  
**TECHNICAL SPECIFICATIONS PORCELAIN STONEWARE**

TECHNISCHE EIGENSCHAFTEN FEINSTEINZEUG / CARACTÉRISTIQUES TECHNIQUES GRES CERAME  
 CARACTERÍSTICAS TÉCNICAS GRES PORCELÁNICO / ТЕХНИЧЕСКИЕ ХАРАКТЕРИСТИКИ КЕРАМОГРАНИТ

CONFORME A NORME / CONFORMING TO STANDARDS / GEMÄSS DEN NORMEN / CONFORME AUX NORMES / CONFORME CON LAS NORMAS / СООТВЕТСТВУЕТ НОРМАТИВАМ / СООТВЕТСТВУЕТ НОРМАТИВАМ  
 EN 14411 ISO 13006 APPENDICE G GRUPPO BIa UGL CON Ev ≤ 0,5%

CARATTERISTICA TECNICA PHYSICAL PROPERTIES TECHNISCHE DATEN CARACTÉRISTIQUES TECHNIQUES CARACTERÍSTICAS TÉCNICAS ТЕХНИЧЕСКАЯ ХАРАКТЕРИСТИКА	METODICI DI PROVA TESTING METHOD PRÜFVERFAHREN NORME D'ESSAIS METODOLOGIA DE PRUEBAS МЕТОДЫ ИСПЫТАНИЙ	RIFERIMENTO NORMA REFERENCE STANDARD PRODUKT WERTE REFERENCIE NORME STANDARDWERTE REFERENCIA NORMA ССЫЛКА НА НОРМУ	VALORE PRODOTTO PRODUCT VALUES PRODUKT WERT VALEUR PRODUIT VALOR PRODUCTO ПОКАЗАТЕЛИ ПРОДУКЦИИ
Dimensioni Sizes Abmessungen Dimensions Dimensiones Размеры		7 cm ≤ N < 15 cm (mm) N ≥ 15 cm (%) (mm)	
		Lunghezza e larghezza - Length and width - Länge und Breite Longueur et largeur - Longitud y anchura - Длина и ширина Spessore - Thickness - Stärke - Epaisseur - Espesor - Толщина	±0.9 ±0.6 ±2.0 ±0.5 ±5.0 ±0.5
		Rettilineità spigoli - Linearity - Kantengeradheit Rectitude des arêtes - Rectilíneidad de los cantos max Orthogonalità - Wedging - Rechtwinkligkeit Orthogonalité - Ortogonalidad - Ортогональность	±0.75 ±0.5 ±1.5 ±0.75 ±0.5 ±2.0
	EN ISO 10545-2	Planarità - Warpage - Ebenflächigkeit - Planéité Planitud - Плоскостность	±0.75 ±0.5 ±2.0
		Aspetto: percentuale di piastrelle accettabili nel lotto - appearance: percentage of acceptable tiles, per lot oberflächenbeschaffenheit: prozentatz der fliesen, die den geforderten eigenschaften entsprechen aspect: pourcentage de carreaux acceptables sur la fourniture totale - aspecto: porcentaje de azulejos aceptables en el lote - внешний вид: процент приемлемой плитки в доле	95 % min. 95 % min.
		Assorbimento d'acqua % - Water absorption % Wasseraufnahme % - Absorption d'eau % Absorción del agua % - Водопоглощение %	Ev ≤ 0,5%
	EN ISO 10545-3		Conforme - Conforming Erfüllt - Conforme - Conforming Соответствующий
		Resistenza alla flessione - Modulus of rupture Biegezugfestigkeit - Résistance à la flexion Resistencia a la flexión - Прочность на изгиб	Valore medio 35 N/mm2 min.
	EN ISO 10545-4		Conforme - Conforming Erfüllt - Conforme - Conforming Соответствующий
		Sforzo di rottura - Breakage resistance Bruchlast - Resistance à la rupture Resistencia a la rotura - Устойчивость на разрыв	sp. > = 7,5 mm: min 1300 N sp. < 7,5 mm: min 700 N
	EN ISO 10545-6		Conforme - Conforming Erfüllt - Conforme - Conforming Соответствующий
		Resistenza all'abrasione profonda - Scratch resistance Bestimmung des Widerstandes gegen tiefen Verschleib Résistance à l'abrasion Résistencia a la abrasión profunda - Устойчивость к абразивному воздействию	175 mm3 max.
	EN ISO 10545-6		Medio - Average - Mittelwert Moyenne - Media - Средний < 150 mm3
		Coefficiente di dilatazione termica lineare - Thermal expansion coefficient - Wärmeausdehnung - Coefficient de dilatation thermique linéaire - Coeficiente de dilatación térmica lineal - Линейный Коэффициент Термического Расширения	Valore dichiarato - Declared value - Valeur déclaré Valor declarado - Angegebener Wert - заявленный показатель
	EN ISO 10545-8		6,8 MK-1
		Resistenza agli sbalzi termici - Thermal shock resistance - Temperaturwechselbeständigkeit - Résistance aux écarts de température - Resistencia a los cambios bruscos de temperatura - Устойчивость к перепадам температуры	Test superato in accordo con ISO 10545-1 - Pass according to ISO 10545-1 Pr es accord avec norme en ISO45-1 - Test aprobado en acuerdo con ISO 10545-1 Test ueberstanden nach ISO 10545-1 - Результат теста в соответствии с ISO 10545-1
	EN ISO 10545-9		* Resistente - Resistant - Widerstandsfähig - Résistants Résistentes - Устойчивый
		Resistenza al gelo - Frost resistance Frostbeständigkeit - Resistance au gel Resistencia a las heladas - Морозостойкость	Test superato in accordo con ISO 10545-1 - Pass according to ISO 10545-1 Pr es accord avec norme en ISO45-1 - Test aprobado en acuerdo con ISO 10545-1 Test ueberstanden nach ISO 10545-1 - Результат теста в соответствии с ISO 10545-1
	EN ISO 10545-12		* Resistente - Resistant - Widerstandsfähig - Résistants Résistentes - Устойчивый
		Resistenza a basse concentrazioni di acidi e alcali - Resistance to low concentrations of acids and alkali - Resistencia a des basses concentrations d'acides et bases - Beständigkeit gegen schwach konzentrierte säuren und laugen - Resistencia a bajas concentraciones de ácidos y alcalos - Устойчивость к низким концентрациям кислот и щелочей	Valore dichiarato - Declared value - Valeur déclaré Valor declarado - Angegebener Wert - заявленный показатель
	EN ISO 10545-13		* Resistente - Resistant - Widerstandsfähig - Résistants Résistentes - Устойчивый
		Resistenza ad alte concentrazioni di acidi e alcali - Resistance to high concentrations of acids and alkali - Resistencia a des hautes concentrations d'acides et bases - Beständigkeit gegen stark konzentrierte säuren und laugen - Resistencia a altas concentraciones de ácidos y alcalos - Устойчивость к высоким концентрациям кислот и щелочей	Valore dichiarato - Declared value - Valeur déclaré Valor declarado - Angegebener Wert - заявленный показатель
	EN ISO 10545-13		* Resistente - Resistant - Widerstandsfähig - Résistants Résistentes - Устойчивый
		Resistenza ai prodotti chimici di uso domestico e agli additivi per piscine - Resistance to domestic chemicals and additives for swimming pools - Resistencia a los productos quimicos de uso domestico y a los aditivos para piscina - Устойчивость к бытовым химическим продуктам и средствам для бассейнов	UB min.
	EN ISO 10545-14		IA
		Resistenza alle macchie di piastrelle non smaltate naturali - Stain resistance of unglazed matte porcelain Fleckenbeständigkeit von unglazierten natur Fliesen Resistencia aux taches des carreaux non emailés naturel - Resistencia a las manchas del porcelánico compacto natural - Устойчивость натуральных неглазурованных плиток к пятнам	Valore dichiarato - Declared value - Valeur déclaré Valor declarado - Angegebener Wert - заявленный показатель
	EN ISO 10545-14		* Resistente - Resistant - Widerstandsfähig - Résistants Résistentes - Устойчивый
			Valore disponibile a richiesta Value available upon request Wert auf Anfrage verfügbar Valeur disponible sur demande Valor disponible orsonal Устойчивость к скопжению
	DIN 51130		
		Resistenza alla scivolosità Slip resistance Rutschfähigkeit Resistencia au dérapage Resistencia al deslizamiento Стоимость по запросу	Dove richiesto - If needed - Nach anforderung - Si demande - Si requerido - Где следует
	DIN 51097		Valore disponibile a richiesta Value available upon request Wert auf Anfrage verfügbar Valeur disponible sur demande Valor disponible orsonal Устойчивость к скопжению > 0.40 Dry / > 0.40 Wet ≥ 0.42 Wet
		B.C.R.A. - D.M.236/89 ANSI A326.3 D COF	

\* Si raccomanda di consultare Project Department per le indicazioni necessarie al corretto utilizzo.  
 It's advisable to refer Project Department for all necessary guidelines to a correct use.  
 Zur korrekten Anwendung wird empfohlen unsere Project Department zu kontaktieren.  
 Merci de consulter notre Project Department pour les indications a un usage correct.  
 Se aconseja contactar nuestro Project Department para las instrucciones necesarias para una correcta utilización.  
 Рекомендуется связаться с Project Department для указания по правильному применению.



122 Marine Drive, Paarden Eiland, Cape Town

info@tilehouse.co.za

www.tilehouse.co.za

021 506 3020