



# The Palm Springs Collection

NUMBER OF SKUS: 26

NUMBER OF DESIGNS: 6





## Californian inspired Eco Prints

Taking inspiration from the laid-back Californian lifestyle, the Palm Springs Collection presents a fun and confident range of PT Eco prints, presenting painterly designs of vibrant buildings, conversational beach scenes, and sprawling palm leaves. This collection's vibrant prints are accompanied by on-trend colourways ranging from soft lilacs and deep-sea blues to cool greys, for a contemporary, versatile, and trend-led take on the Californian theme. Pair with white accents for the perfect backdrop to the collection's joyful designs.



# LOS ANGELES

*Los Angeles is a loosely-painted depiction of dense, luscious foliage in soft washes of colour.*

100% Organic Cotton  
Approx. 142cm (useable 138cm)  
V: 62 drop 31cm | H: 68.5cm  
Curtaining & Accessories  
214 gsm



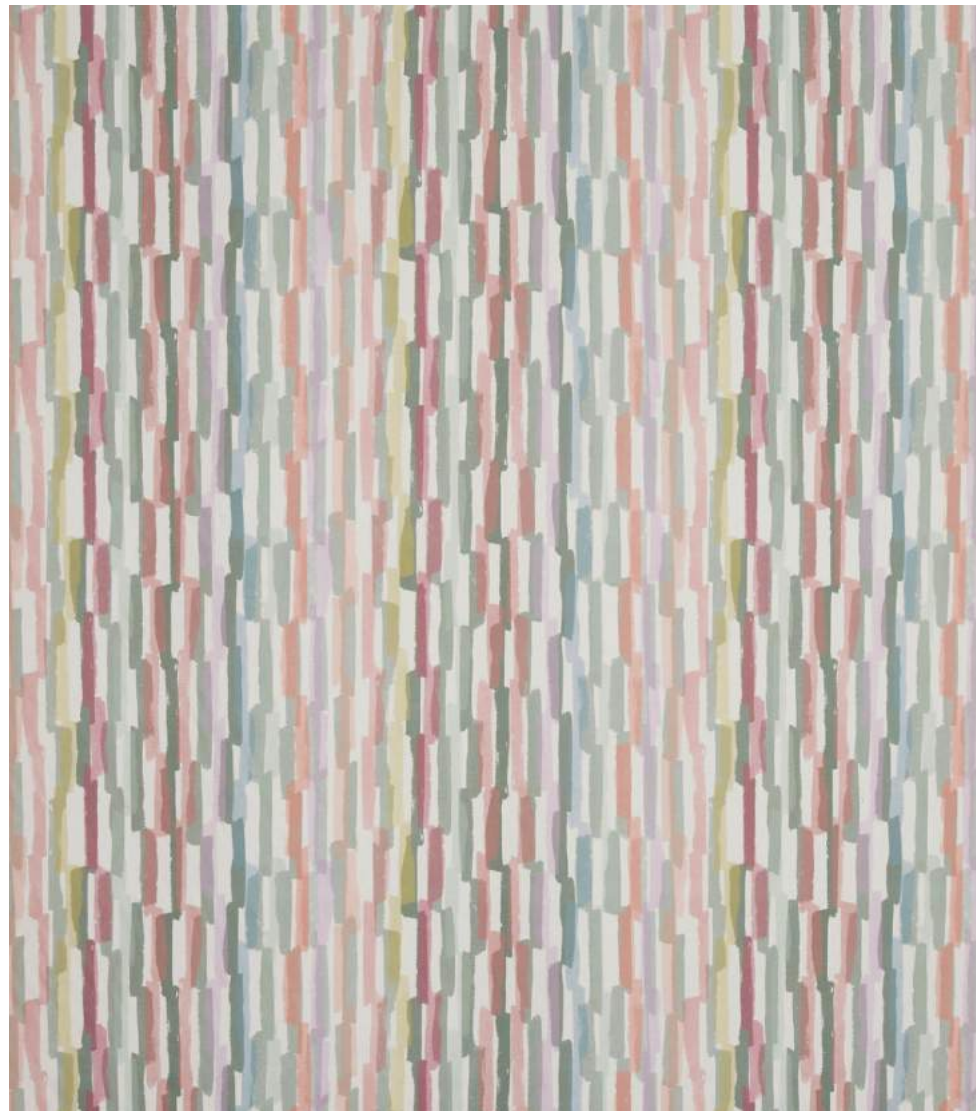


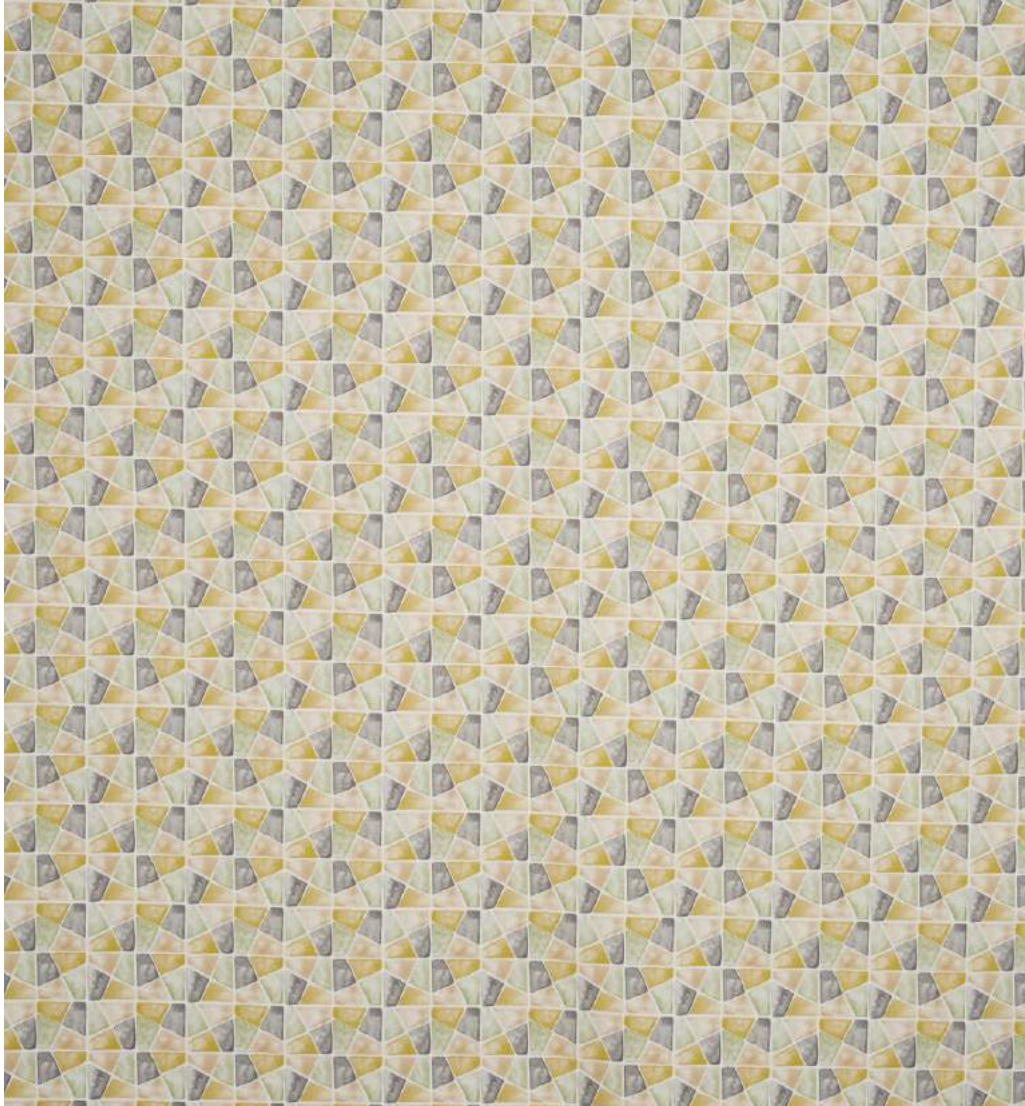
# MORENA

*Morena is a versatile all-over abstract geometric, giving a gentle rainbow effect with its use of gradient colour.*



100% Organic Cotton  
Approx. 142cm (useable 138cm)  
V: 32.6cm | H: 66.7cm  
Curtaining & Accessories  
214 gsm

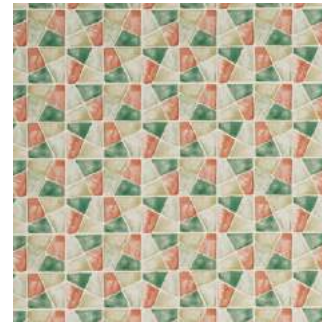
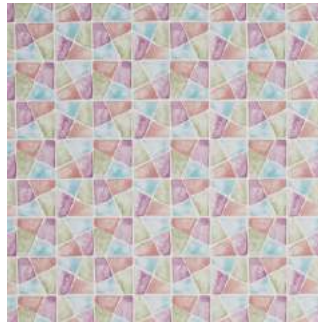




# OCEAN SIDE

*Reminiscent of floor pavers on a seaside promenade, Ocean Side is a multi-coloured block, soft geometric.*

100% Organic Cotton  
Approx. 142cm (useable 138cm)  
V: 11.2cm | H: 11.2cm  
Curtaining & Accessories  
214 gsm



# PALM BEACH

*This all-over leaf design is made up of the decorative fan-shaped leaf of the Ginkgo Biloba tree, loosely painted in watercolour.*

100% Organic Cotton  
Approx. 142cm (useable 138cm)  
V: 31.8 drop 15.9cm | H: 67.3cm  
Curtaining & Accessories  
214 gsm





# SANTA MARIA

*The watercolour abstract frond-shaped leaves of Santa Maria form a subtle vertical effect on a calm, open ground.*

100% Organic Cotton  
Approx. 142cm (useable 138cm)  
V: 62.3cm | H: 66.5cm  
Curtaining & Accessories  
214 gsm





# SUNSET BOULEVARD

*Representing the Californian beachfront, Sunset Boulevard is a conversational print that features seaside architecture and palm trees.*

100% Organic Cotton  
Approx. 142cm (useable 138cm)  
V: 57.3cm | H: 67.5cm  
Curtaining & Accessories  
214 gsm



## Organic Cotton:

Organic Cotton production helps sustain the health of soils, ecosystems, and people by using natural processes rather than artificial inputs. Importantly, organic cotton farming does not allow the use of toxic chemicals. Instead, it combines tradition, innovation, and science to benefit the shared environment and promote a good quality of life for all involved.

## Benefits:

No chemicals are used in the growing of organic cotton to help reduce our environmental footprint. The process uses 91% less water and 62% less energy than conventional cotton. 80% of organic cotton is rain-fed, helping to reduce the pressure on local water sources. When choosing organic cotton, you are investing in water conservation, cleaner air better soil and farmer livelihoods. Its production keeps farmers and their families safe as they are not exposed to toxic chemicals.



## CONTACT US

WEB: [www.stuartgraham.co.za](http://www.stuartgraham.co.za)

EMAIL: [marketing@stuartgraham.co.za](mailto:marketing@stuartgraham.co.za)

ADDRESS: 1 Sidon Street, North End, Port Elizabeth

## OUR SUSTAINABLE PROMISE

Sustainability is every person's responsibility. As a fabric brand, we take our environmental impact to heart and are proactively working towards a lasting and meaningful positive impact on the planet with products certified under ISO 14001, GRS or OCS

