

*wanabi*  
**WANABIWOOD**  
INNOVATION THROUGH FLOORING



CATALOGUE 2023 / 2024



## AND IN THE BEGINNING

Wanabiwood is a major importer and distributor of flooring products into South Africa and the Sub-Saharan Region. Founded by Renalde Pretorius in 2009, we have grown over the years into one of the larger and most respected flooring importers in the Country.

It all really started in 2010 after a year of research with factories and consumers, Renalde, armed with her new product attended Decorex Jhb with a hunch that LVT flooring was going to be the new buzz word in flooring solutions, her hunch paid off and after a successful first show, the initial order was doubled, and Wanabiwood Flooring started to enter the market. As the demand increased so did the need to expand the footprint beyond Gauteng, we now have warehouses and representation in Johannesburg, Durban, East London and Cape Town giving Wanabiwood a national footprint. In addition to the local South African market, we are represented in most of the Sub-Saharan Regions making us able to supply anywhere on the African Continent.

## FOCUSED FLOORING

For many years Wanabiwoods focus was on Vinyl flooring, this ethos of focusing on one type of product means that the company became experts in this field and despite the temptation to expand the product base, the time was never right, and to find the correct products would prove to be tricky in a flooded market. We dabbled in decking and laminate flooring, but the time was not right for these products. Wanabiwood for many years has been considered to be a leader and specialist in LVT and SPC flooring products, we still are very much focused on vinyl, but as the story of growth continues, the portfolio has now expanded.

## EXPANSION

Covid was a huge setback for the world but Wanabiwood came out the other side and we think that we became a stronger company for it despite the obvious hardships that covid caused. The need to grow the product offering became a priority, but it was not a simple decision. Various products were considered and with the mindset still on vinyl based products, we added a cushion vinyl to our range from one of Europe's biggest manufacturers, this was then followed by a non-directional vinyl sheeting product, this was prompted by the ever growing healthcare demand.

In 2022 we were then approached by one of the largest flooring manufacturers in Europe, Forbo Flooring Systems. Once a household name in South Africa, the brand had been falling out of the spotlight. Wanabiwood jumped at the chance and is proud to be an approved importer and distributor of Forbo Flooring products, once again, Wanabiwood is still very much focused on the Vinyl flooring products and added into stock, Forbo's Allura Flex and Allura Puzzle Vinyl commercial tiles and although not 100% vinyl, Flotex Flocked Carpeting is now once again stocked in South Africa.

## THE RIGHT CHOICE

Wanabiwood has grown, but it has not lost touch with its roots, Wanabiwood is still owned and managed by Renalde Pretorius backed by an ever-growing team that will continue to expand as the demand for the brand continues. We strive to keep our family working values and will continue to try and be the best at what we do at all times.

## WHY BUY WANABIWOOD

In short, quality products from quality suppliers backed by a team with over 200 years in the flooring industry.

1. Quality Products sourced from reliable manufacturers.
2. Focused on Vinyl since our inception, making us true experts.
3. Residential & Commercial Products
4. Experienced Staff
5. Competitive Pricing
6. Technical Back Up
7. National & International Coverage
8. Warranties of up to 20 years

Innovation Through Flooring, Flooring driven by Innovation!







WANABI  FUNkY

CUSHION VINYL



GINGER CROSS



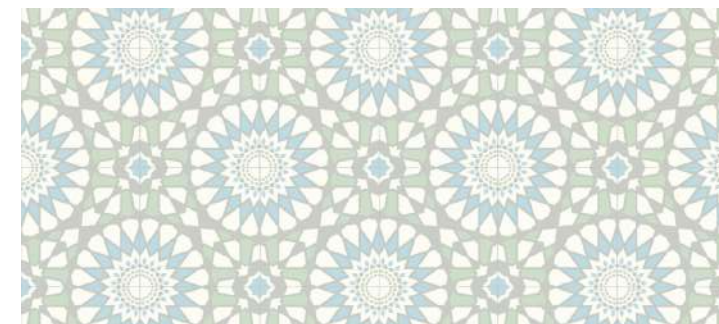
WASHED OAK



CHAMPAGNE OAK



ROCKY MOUNTAIN



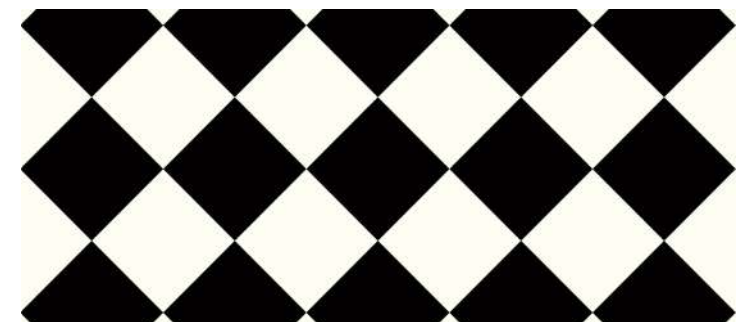
RETRO SKY



PLUSH ELITE



SPANISH CANDY



CHEQUEBOARD

## APPLICATION



RESIDENTIAL

## BENEFITS

- 100% VIRGIN MATERIAL
- SOUND ABSORBING
- 100% WATERPROOF
- EASY TO CLEAN
- DURABLE & RESILIENT
- HYGIENIC
- COST EFFECTIVE
- NO HARMFUL SUBSTANCES

## SPECIFICATIONS

ROLL SIZE: 30m x 2m AVERAGE | THICKNESS: 2.8mm | WEAR LAYER: 0.2mm

APPLICATION: DOMESTIC: INSTALLATION METHOD: STICK DOWN WITH APPROVED ADHESIVE

WARRANTY: 5 YEARS RESIDENTIAL

SOLD IN FULL ROLLS OR CUT LENGTHS PER M2.

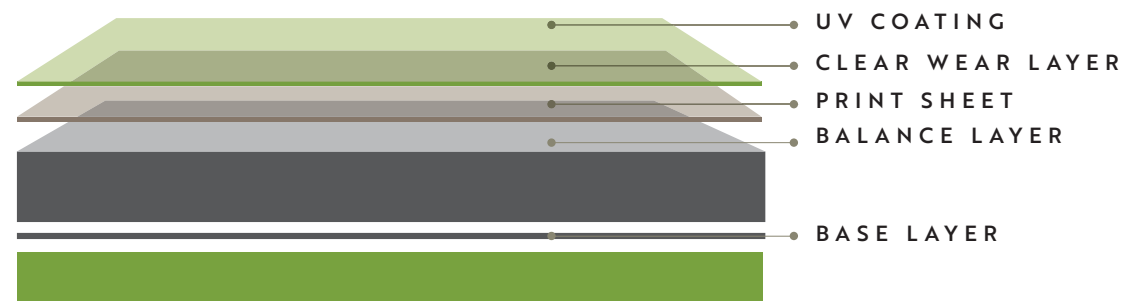






# DESIRE LVT

LVT DRY BACK  
GLUE DOWN



## APPLICATION



RESIDENTIAL

## BENEFITS

- 100% VIRGIN MATERIAL
- SOUND ABSORBING
- WATER RESISTANT
- EASY TO CLEAN
- DURABLE & RESILIENT
- HYGIENIC
- COST EFFECTIVE
- NO HARMFUL SUBSTANCES



BOHEMIAN PINE



SMOKEY TOPAZ



FLOTSAM



GOLDEN OAK



WINTER OAK



CARAMEL LATTE



ICE AGE



HANNAH PINE

## SPECIFICATIONS

PLANK SIZE: 1219.2mm x 228.6mm | THICKNESS: 2mm | WEAR LAYER: 0.3mm

TOTAL PLANKS PER BOX: 18 | M<sup>2</sup> PER BOX: 5.02 m<sup>2</sup>

WARRANTY: 15 YEARS RESIDENTIAL

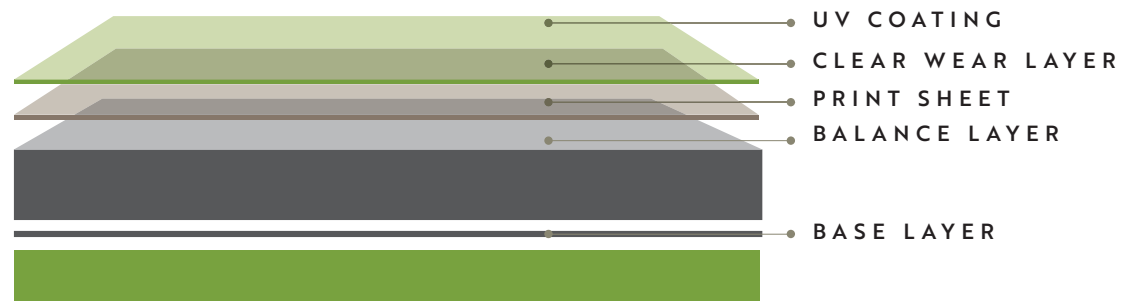
Variances can be expected from plank to plank in order to mimic the look of real wood.





# EChO♦WOOD CLASSIC

LVT DRY BACK  
GLUE DOWN



## APPLICATION



COMMERCIAL



RESIDENTIAL

## BENEFITS

- 100% VIRGIN MATERIAL
- SOUND ABSORBING
- WATER RESISTANT
- EASY TO CLEAN
- DURABLE & RESILIENT
- HYGIENIC
- COST EFFECTIVE
- NO HARMFUL SUBSTANCES



AGED OAK



PISTACHIO



WALNUT PINE



SUMMER PINE



JASPER PINE



EARTH STONE



DESERT SAND



BEACH SAND

## SPECIFICATIONS

PLANK SIZE: 1216.2mm X 225.6mm | THICKNESS: 2.5mm | WEAR LAYER: 0.5mm

TOTAL PLANKS PER BOX: 16 | M<sup>2</sup> PER BOX: 4.39m<sup>2</sup> PER BOX

UV COATING | MICRO BEVELLED

WARRANTY: 20 YEARS RESIDENTIAL / 15 YEARS COMMERCIAL

Variances can be expected from plank to plank in order to mimic the look of real wood.

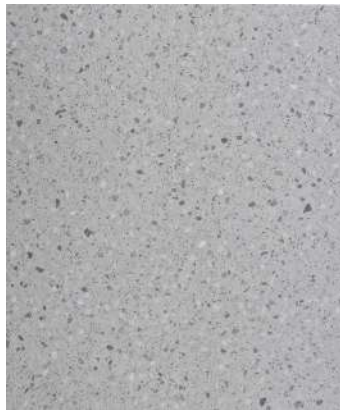






# NEW EChOTile

LVT DRY BACK  
GLUE DOWN



DIAMOND  
QUARTZ



CRUSHED  
STONE



EMSER  
STONE



VENICE  
SLATE



TORONTO  
TERRAZZO



ITALIANA  
TERRAZZO



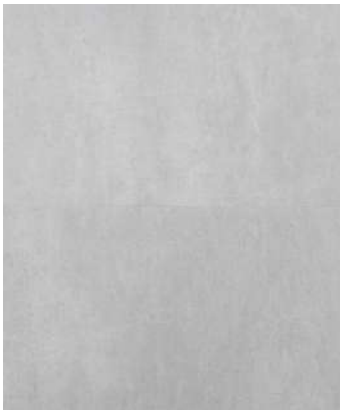
BRIGIDA  
STONE



SAPPHIRE  
STONE



SILVER  
JACKEL



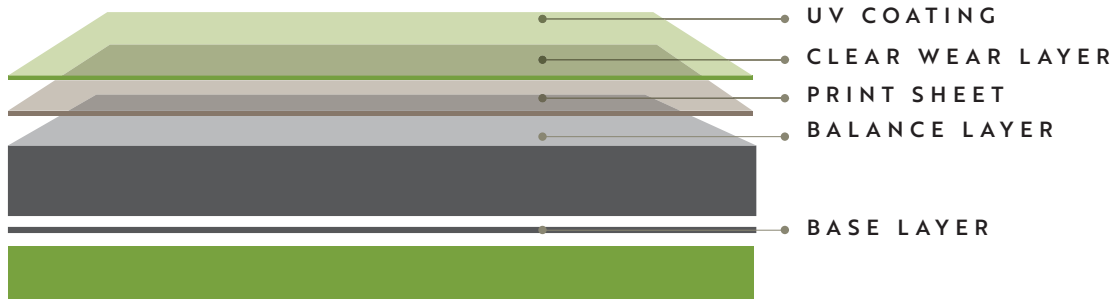
GEMSTONE



ZIRCON  
STONE



SALT  
AND PEPPER



## APPLICATION



COMMERCIAL



RESIDENTIAL

## BENEFITS

- 100% VIRGIN MATERIAL
- SOUND ABSORBING
- WATER RESISTANT
- EASY TO CLEAN
- DURABLE & RESILIENT
- HYGIENIC
- COST EFFECTIVE
- NO HARMFUL SUBSTANCES

## SPECIFICATIONS

TILE SIZE: 304.8mm X 609.6mm | THICKNESS: 2.5mm | WEAR LAYER: 0.55  
TOTAL TILES PER BOX: 22 | M<sup>2</sup> PER BOX: 4.087m<sup>2</sup> | MICRO BEVELLED  
WARRANTY: 20 YEARS RESIDENTIAL / 15 YEARS COMMERCIAL



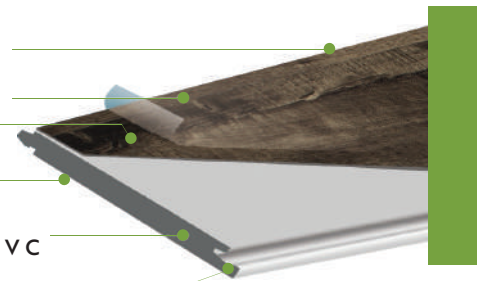




# DESIRE SPC

RIGID CORE BOARD  
CLICK

ALUMINIUM OXIDE COATING  
WEAR LAYER  
PRINT FILM LAYER  
IXPE  
LIME STONE POWDER  
CALCIUM CARBONATE & PVC  
UNILIN CLICK



## APPLICATION



LIGHT  
COMMERCIAL



RESIDENTIAL

## BENEFITS

- 100% VIRGIN MATERIAL
- SOUND ABSORBING
- EASY TO CLEAN
- DURABLE & RESILIENT
- HYGIENIC
- COST EFFECTIVE
- NO HARMFUL SUBSTANCES

## SPECIFICATIONS

**PLANK SIZE:** 1219.2mm X 228.6mm | **THICKNESS:** 4mm SPC +1mm IXPE =5mm  
**WEAR LAYER:** 0,55mm | **TOTAL PLANKS PER BOX:** 8 | **M² PER BOX:** 2,23m²  
**SURFACE:** DEEP EMBOSSED | **BEVEL:** MICRO BEVELLED  
**WARRANTY:** 20 YEARS RESIDENTIAL / 15 YEARS LIGHT COMMERCIAL

Variances can be expected from plank to plank in order to mimic the look of real wood.  
Must be installed on a approved moisture barrier or a 80mic ldpe virgin plastic.



SANDSTONE



CARAMEL LATTE



WINTER OAK



JASPER PINE



DESERT SAND



SUMMER PINE



BEACH SAND



AGED OAK



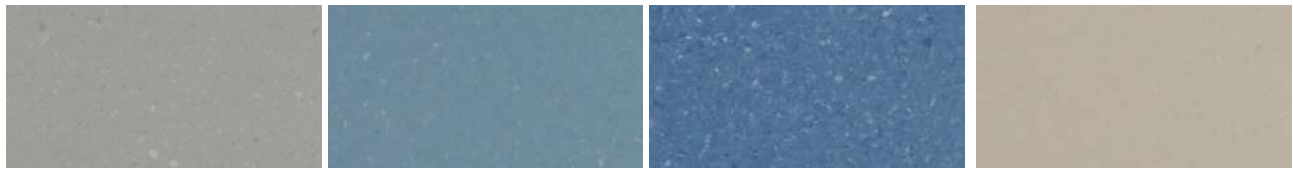




EXCEED  200

HOMOGENEOUS  
VINYL SHEETING

SPECIAL ORDER COLOURS



EC005

EC006

EC009

EC011

APPLICATION

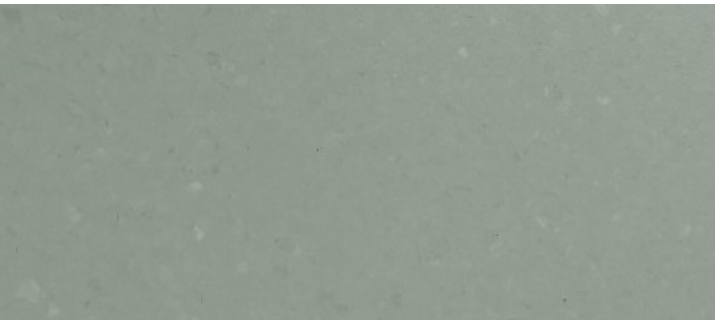


COMMERCIAL

BENEFITS

- 100% VIRGIN MATERIAL
- SOUND ABSORBING
- WATER RESISTANT
- EASY TO CLEAN
- DURABLE & RESILIENT
- HYGIENIC
- COST EFFECTIVE
- NO HARMFUL SUBSTANCES

COLOURS IN STOCK



EC001



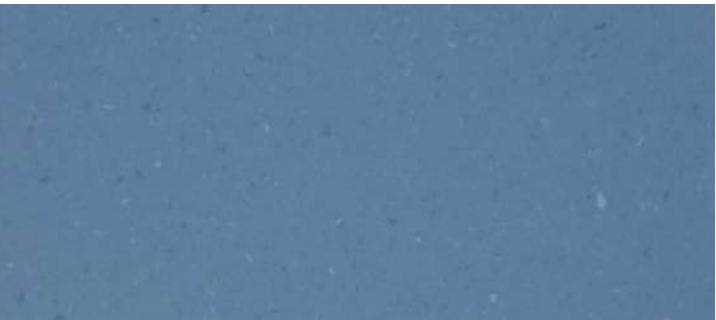
EC002



EC003



EC004



EC007



EC008



EC010



EC012

SPECIFICATIONS

NON DIRECTIONAL PUR COATED VINYL SHEETING | ROLL SIZE: 20m X 2m THICKNESS: 2mm  
CONSTRUCTION: HOMOGENEOUS | APPLICATION: HEAVY COMMERCIAL  
100% WATERPROOF | INSTALLATION METHOD: STICK DOWN WITH APPROVED ADHESIVE  
WARRANTY: 20 YEARS COMMERCIAL

SOLD IN FULL ROLLS OR HALF ROLLS.  
PVC ACCESSORIES AVAILABLE.









# FORBO FLOTEX FLOCKED CARPET

KNOWN TO MANY IN THE INDUSTRY, WANABIWOOD IS PROUD TO BE LISTED AS A STOCKIST AND DISTRIBUTOR OF FORBO PRODUCTS INTO AFRICA.

FOR MORE INFORMATION ON THEIR VAST RANGE OF PRODUCTS, GO TO  
<https://www.forbo.com/flooring/en-aa>

## APPLICATION



HEAVY  
COMMERCIAL



RESIDENTIAL

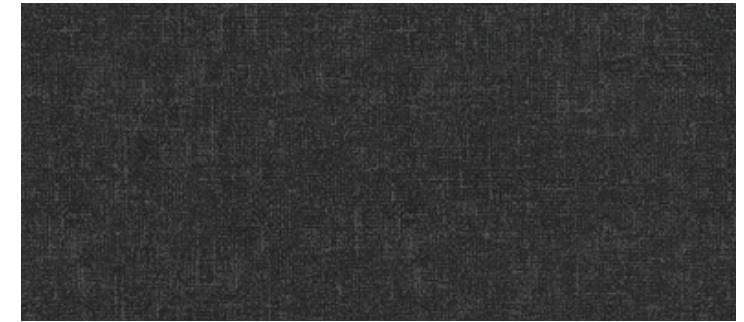
## BENEFITS

- 100% VIRGIN MATERIAL
- SOUND ABSORBING
- EASY TO CLEAN
- DURABLE & RESILIENT
- HYGIENIC
- COST EFFECTIVE
- NO HARMFUL SUBSTANCES

## STOCK ITEMS



METRO JADE



METRO ASH



METRO GREY



METRO LAGOON



METRO INDIGO

## SPECIFICATIONS

### STOCKED PRODUCT

ROLL SIZE: 30m X 2m | THICKNESS: 4.3mm

NYLON FIBRES LAYERED ONTO A REINFORCED PVC BACKING

APPLICATION: RESIDENTIAL / HEAVY COMMERCIAL

INSTALLATION: METHOD STICK DOWN WITH APPROVED ADHESIVE

WARRANTY: UP TO 16 YEARS

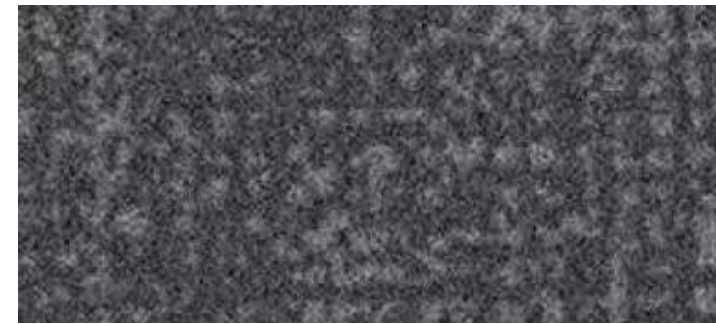
SOLD IN FULL ROLLS OR CUT LENGHTS





# FORBO FLOTEX FLOCKED TILE

## STOCK ITEMS



METRO GREY



GALGARY AZURE



METRO PETROL



METRO NIMBUS

KNOWN TO MANY IN THE INDUSTRY, WANABIWOOD IS PROUD TO BE LISTED AS A STOCKIST AND DISTRIBUTOR OF FORBO PRODUCTS INTO AFRICA.

FOR MORE INFORMATION ON THEIR VAST RANGE OF PRODUCTS, GO TO  
<https://www.forbo.com/flooring/en-aa>

## APPLICATION



HEAVY  
COMMERCIAL



RESIDENTIAL

## BENEFITS

- 100% VIRGIN MATERIAL
- SOUND ABSORBING
- EASY TO CLEAN
- DURABLE & RESILIENT
- HYGIENIC
- COST EFFECTIVE
- NO HARMFUL SUBSTANCES

## SPECIFICATIONS

### STOCKED PRODUCT

TILE SIZE: 50cm x 50cm | THICKNESS: 4.3mm | TILES PER BOX: 12 | M2 PER BOX: 3m<sup>2</sup>

NYLON FIBRES LAYERED ONTO A REINFORCED PVC BACKING

APPLICATION: RESIDENTIAL & HEAVY COMMERCIAL

INSTALLATION: METHOD STICK DOWN WITH APPROVED ADHESIVE

WARRANTY: UP TO 16 YEARS







# allura<sup>®</sup> flex II

## FORBO ALLURA FLEX



NATURAL CONCRETE



GRIGIO CONCRETE

### SPECIFICATIONS

#### NATURAL CONCRETE

TILE SIZE: 50cm x 50 cm

TILES PER BOX: 10

M2 PER BOX: 2,50m<sup>2</sup>

#### GRIGIO CONCRETE

TILE SIZE: 100cm x 100cm

TILES PER BOX : 1

M2 PER BOX : 1m<sup>2</sup>

THICKNESS : 5mm | WEAR LAYER : 1mm | CLASS 34, HEAVY COMMERCIAL USE

INSTALLATION: STICK DOWN WITH APPROVED ADHESIVE

WARRANTY: UP TO 16 YEARS

### APPLICATION



HEAVY  
COMMERCIAL



RESIDENTIAL

### BENEFITS

- 100% VIRGIN MATERIAL
- SOUND ABSORBING
- EASY TO CLEAN
- DURABLE & RESILIENT
- HYGIENIC
- COST EFFECTIVE
- NO HARMFUL SUBSTANCES

### SPECIAL ORDER



BLUE CLOUDS



CALMING SKY



CANYON CEMENT



CHARCOAL CEMENT



CORODED STRATA



DREAMY SKY



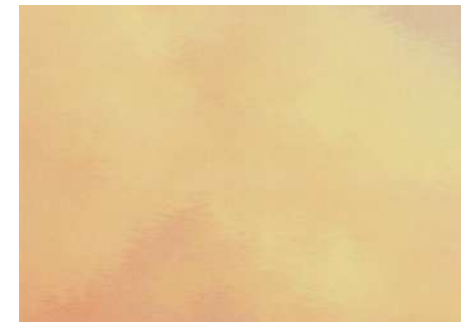
GREY CLOUDS



IRON SPECKLED



LIGHT CEMENT



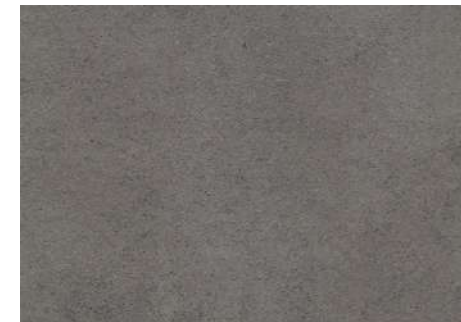
MAGICAL SKY



OXIDISED STRATA



PALE SPEK



ROCK CEMENT



RUST SPECKLED



SAND CEMENT

AVAILABLE IN 2 TILE SIZES: 50cm x 50cm or 100cm x 100cm



# allura<sup>®</sup> puzzle



LEAD STONE



GREY STONE

## SPECIFICATIONS

TILE SIZE: 96cm x 96cm | THICKNESS : 5mm | WEAR LAYER : 0,7mm

TILES PER BOX: 1 | M2 PER BOX: 0,92m2

CLASS 34, HEAVY COMMERCIAL USE

DIMENSIONAL STABILITY: 0,05%

INSTALLATION: LOOSE LAY, INTERLOCKING

WARRANTY: UP TO 20 YEARS

## APPLICATION



HEAVY  
COMMERCIAL

## BENEFITS

- 100% VIRGIN MATERIAL
- SOUND ABSORBING
- EASY TO CLEAN
- DURABLE & RESILIENT
- HYGIENIC
- COST EFFECTIVE
- NO HARMFUL SUBSTANCES

## SPECIAL ORDER



COAL CONCRETE



NATURAL CONCRETE



SAND CEMENT



CANYON CEMENT



CORRODED STRATA



OXIDIZED STRATA





2022 saw the collaboration between Wanabiwood and a European market leader, Forbo Flooring Systems. Initially Wanabiwood took into stock, Flotex sheeting and Tiles, Allura Flex and Allura Puzzle loose lay tiles. All three of these products are directed at the commercial sector especially retail chain stores and the commercial office environment. Flotex has no competition in terms of what it can provide as a floor covering, a carpet that thinks it's a resilient floor, in 50 years of manufacture, nothing has come close to Flotex.

In addition to the stocked items, Wanabiwood and Forbo Flooring can offer the following products.





**L i n o f l e x** , also known as Linoleum is a true Co2 Natural product made from 97% natural materials, this hard wearing sheeting product has been around for over 130 years and has been used in many different locations, from hospitals to office parks, Linoleum is one of the greenest floorcoverings on the planet, now pre sealed as well, so the product is good to go straight after installation.



**E t e r n a l** , is a heterogeneous product available in colours, material or in the ever growing trend of wood look designs. 2mm thick with a 0.7mm wear layer, this has a class 34 commercial use and a class 43 industrial use making this product suitable for practically any location where this type of sheet material is required.



**S a r l o n** is another Heterogeneous product available in acoustic 15dB and 19dB products along with the ground breaking Modulup, this is a loose lay sheeting product allowing speedy installs with minimal sub floor prep, install today, use the same day, especially suited to hospital applications where quick turn arounds are required meaning minimum downtime for busy hospital areas.



**S p h e r a** is a homogeneous product and is available in standard sheeting and also static dispersion ranges, this is the back bone of Forbo hospital and educational product offering. Durable and is available in a range of colours to suit every palate, smart top is the surface treatment and ensures a long lasting protective coating, this product does not need to be stripped or sealed after installation but will require ongoing care in line with any other PUR coated product.



**A l l u r a** is not just Flex and Puzzle, this LVT offering is available in planks, tiles and interlocking products with wear layers from 0.7mm up to 1mm, there are also acoustic products that will assist in the reduction of impact sound. Wood look or stone look, Alura LVT has the solution for every flooring.



**T e s s e r a** is a range of tufted carpet tiles, these tiles are backed and can be loose laid. Made in several sizes including 50cm x 50cm tiles and longer plank products. Loop pile or cut and loop options are available giving a luxurious feel underfoot. Modern designs will suit any office environment and will add a touch of class to wherever they are installed.



**C o r a l** entrance matting is a must for any commercial environment, several different designs are available and Forbo will increase any warranty by 6 years should the entrance matting be installed in front of any of their flooring products, such is the importance of a good entrance matting system.

In addition to all of these products, Forbo prides themselves on being a solution based company, we have options on sports flooring, ESD and Cleanroom solutions, wet rooms, transport flooring and needle punch carpeting.

*For information on all of the Forbo range available through Wanabiwood, please visit the Forbo website on <https://www.forbo.com/flooring/en-aa/>. Or contact your representative.*





# REWARD

## WANABIRICH

### LET'S GET INTO THE DETAILS OF HOW THE WANABIWOOD PROGRAMME WORKS.

Here is what you need to do:

Sell WanabiWood products, earn rewards at the end of the month for your qualifying sales.

Redeem your WanabiWood earnings anytime.

The more you sell, the more you earn!! You can start earning from every WanabiWood sale made.

*See qualified products below at R1 per sqm.*

All you have to do is to carry on as you normally would selling the amazing range of quality WanabiWood Flooring products. The only difference is that now you will be rewarded for your efforts! The more you sell, the more you earn. It's that simple. So, familiarize yourself with the ranges that will reward you and sell like you WanabiRich! To join, please contact [kerry@wanabiwood.co.za](mailto:kerry@wanabiwood.co.za) and she will get you started, because at WanabiWood we Wanabi good to you.

### ENJOY WITH WANABIRICH YOU CAN BE THE MASTER OF YOUR OWN SUCCESS!

#### WHICH WANABIWOOD PRODUCTS DO I SELL?

CLASSIC LVT | GLUE DOWN

DESIRE LVT | GLUE DOWN

NEW ECHOTILE LVT | GLUE DOWN

DESIRE SPC | CLICK

WANABI FUNKY | CUSHION

EXCEED 200 | SHEETING

FORBO FLOTEX

FOBRO ALLURA





# CREDENTIALS



**GAUTENG HEAD OFFICE**

Tel +27 (11) 028-9498  
Email [orders@wanabiwood.co.za](mailto:orders@wanabiwood.co.za)  
Address 2 Charlie Lane (cnr. Charlie & Bravo Road)  
Hughes, Jet Park, 1459

**HEAD OF COMMERCIAL  
DIVISION**

**SANDY MC LARDY**  
Mobile +27 (0) 64 860 1078  
Email [sandy@wanabiwood.co.za](mailto:sandy@wanabiwood.co.za)

**RENALDE PRETORIUS  
DIRECTOR**

Mobile +27 (0) 79 697 1833  
Tel +27 (0) 11 028 9498/9  
Email [renalde@wanabiwood.co.za](mailto:renalde@wanabiwood.co.za)

**KWAZULU NATAL  
BARRY HUMPHREY**

Mobile +27 (0) 83 443 4148  
Email [barryhumphrey33@gmail.com](mailto:barryhumphrey33@gmail.com)

**LOUIS HOLM  
LOGISTICS MANAGER**

Mobile +27 (0) 76 056 0725  
Tel +27 (0) 11 028 9499  
Email [logistics@wanabiwood.co.za](mailto:logistics@wanabiwood.co.za)

**NAMIBIA  
FLOOR WORLD**

Tiaan Louw  
Mobile +264 81 449 2175  
Tel +264 61 250 678  
Email [tiaan@floorworld.com.na](mailto:tiaan@floorworld.com.na)

**CECILIA HOLM  
OFFICE MANAGER**

Mobile +27 (0) 71 609 4958  
Tel +27 (0) 11 028 9499  
Email [admin@wanabiwood.co.za](mailto:admin@wanabiwood.co.za)

**WESTERN CAPE  
GARDEN ROUTE  
EASTERN CAPE**

Serviced from Head Office  
Grant Miles Neve  
Mobile +27 (0) 72 821 5307  
Louis Holm  
Mobile +27 (0) 76 056 0725  
Sandy Mc Lardy  
Mobile +27 (0) 64 860 1078

**RECEPTIONIST**

Michelle Stevens  
Tel +27(11)028-9498  
Email [info@wanabiwood.co.za](mailto:info@wanabiwood.co.za)

**NATIONAL SALES MANAGER**

Grant Miles Neve  
Mobile +27 (0) 72 821 5307  
Email [grant@wanabiwood.co.za](mailto:grant@wanabiwood.co.za)





[WWW.WANABIWOOD.CO.ZA](http://WWW.WANABIWOOD.CO.ZA)