



TEXTILES INSPIRED BY AFRICAN CULTURE

Product Catalogue

Product of
Aranda
Made in South Africa



The My Africa range of bold and distinctive blankets, throws and wraps is brought to you by Aranda Textile Mills. Aranda was established in 1953 and has a long and proud history of being South Africa's leading manufacturer and supplier of heritage blankets and traditional shawls. This range has been inspired by the many unique and diverse cultures and traditions found on the African continent. The people who reside throughout these lands are bonded together through their deep-rooted heritage and African pride. It is this which has led to the creation of the My Africa range and through which African stories can be shared and celebrated throughout the world.

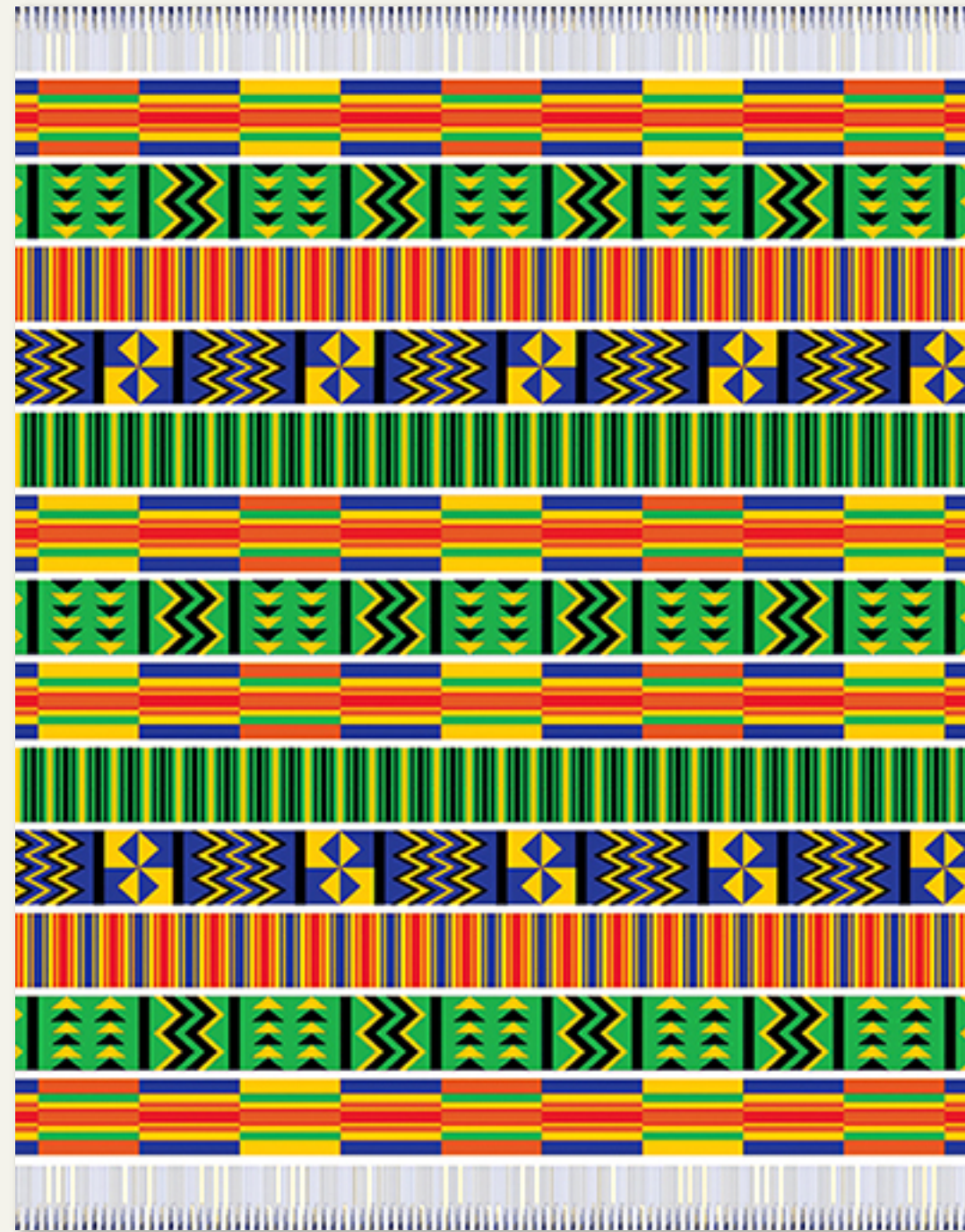


MY
KENTE
STORY

This beautiful and vibrant throw has been inspired by the colourful Kente fabric, which originated from West Ghana in the 11th century. Kente comes from the word '*kenten*', which means 'basket' in the Akan dialect, Asante. The fabric in itself is particularly special, as it was originally the royal cloth of kings, worn only in times of extreme importance. While its esteem remains high, Kente cloth is today in wide use. The different cloth designs carry specific non-verbal messages, such as *Mako Maso Adeae* (my heart's desire) meaning 'I love you', when the cloth is left at the front door of a lady's house. Due to the significance of the fabric's symbology, Kente fabric scarves are used by African American graduates as a symbol of ethnic pride.

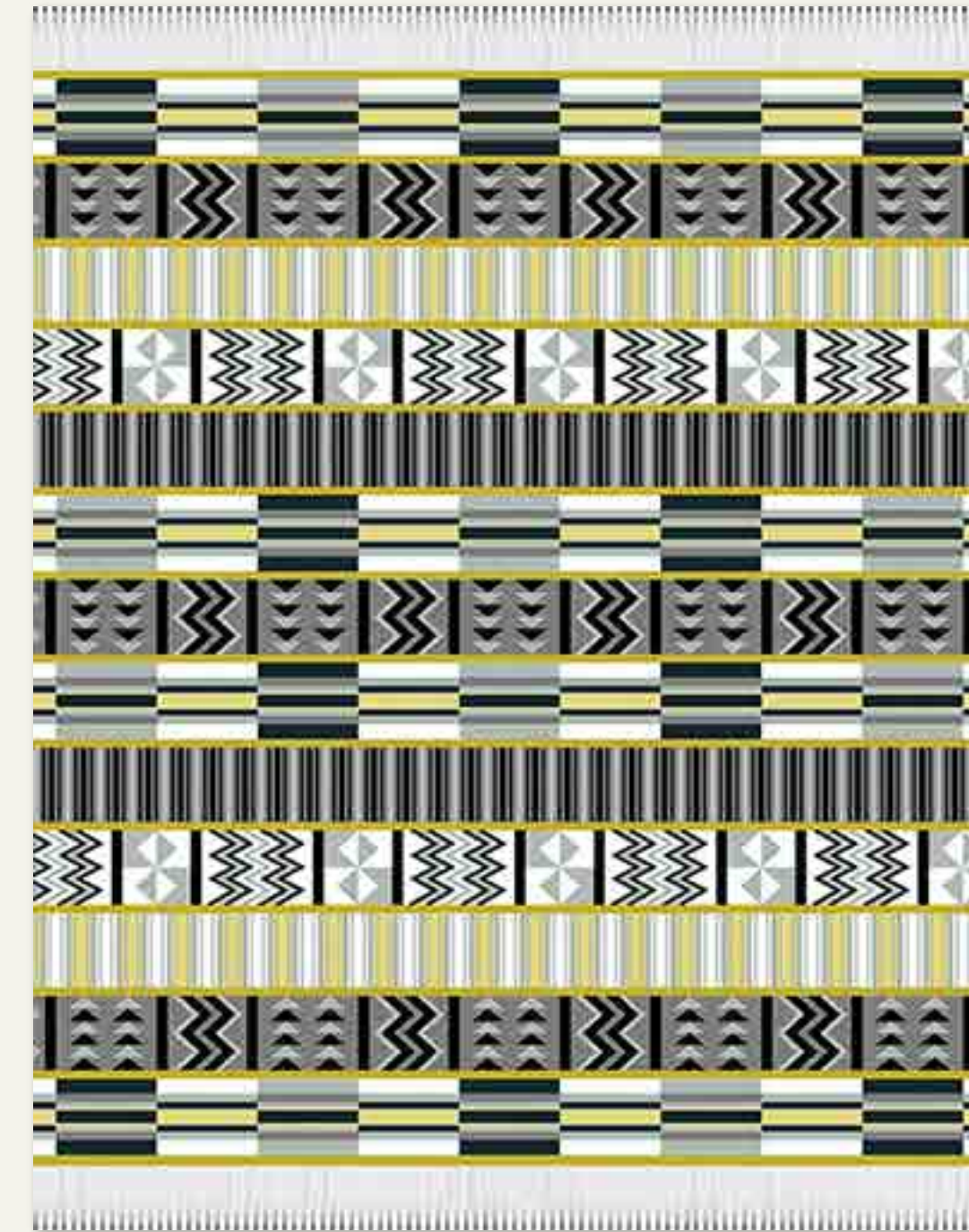


KENTE
Yellow / Apple



Product Code: BVS9897801MA
Composition: 100% Super soft acrylic, triple jaquard weave,
open selvedge
GSM: 360 g/m2
Size: 140cm x 180cm / 55" x 71"

KENTE
Wild Dove / Nugget Gold



Product Code: BVS9897810MA
Composition: 100% Super soft acrylic, triple jaquard weave,
open selvedge
GSM: 360 g/m2
Size: 140cm x 180cm / 55" x 71"

MY
KNBA
STORY



This beautifully crafted throw is inspired by the elaborate and complex designs of the traditional Kuba cloth, unique to the Democratic Republic of the Congo. Perpetuating the rich cultural traditions, the men grow the raa palms, and then weave the leaves into the base fabric. The women then embroider surface decorations onto the fabric transforming it into various forms of textiles, such as ceremonial skirts, tribute cloths, headdresses and basketry. At a point in Kuba history, aristocratic titles, up to and including that of the king of the Kuba Empire, ceased to be hereditary and were awarded based on merit. Fierce competition for these positions was one of the major forces behind the evolution of Kuba weaving arts. Today, the cloth that they produce has become a popular international design trend.



KUBA MODERN
Cocoa / Nutmeg



Product Code: BVU2807801MA
Composition: 100% super soft acrylic, triple jaquard weave,
open selvedge
GSM: 360 g/m2
Size: 140cm x 180cm / 55" x 71"

KUBA MULTI
Cinnabar / Clay



Product Code: BVU2827801MA
Composition: 100% super soft acrylic, triple jaquard weave,
open selvedge
GSM: 360 g/m2
Size: 140cm x 180cm / 55" x 71"



This unique throw has been inspired by one of the most recognisable African cultures: the Maasai of Kenya and Tanzania. With a timeless history steeped in tradition, these warriors of the great African savannah are recognised by the unique shape of the shield and matching symbolic headgear. The warrior is of great importance as a source of pride in the Maasai culture. To be a Maasai is to be born into one of the world's last great warrior cultures. A Maasai warrior shield is made of water buffalo hide, and is near impenetrable. The cloth used to wrap around the body is called *Shúkà*, and the word Maasai means "the speaker of the language *Maa*."



MAASAI
Red / Black



Product Code: MYT0038802MA
Composition: 100% Super soft acrylic, single faced dobby or jacquard weave
GSM: 260 g/m2
Size: 130cm x 180cm / 51" x 71"



MY
MALI

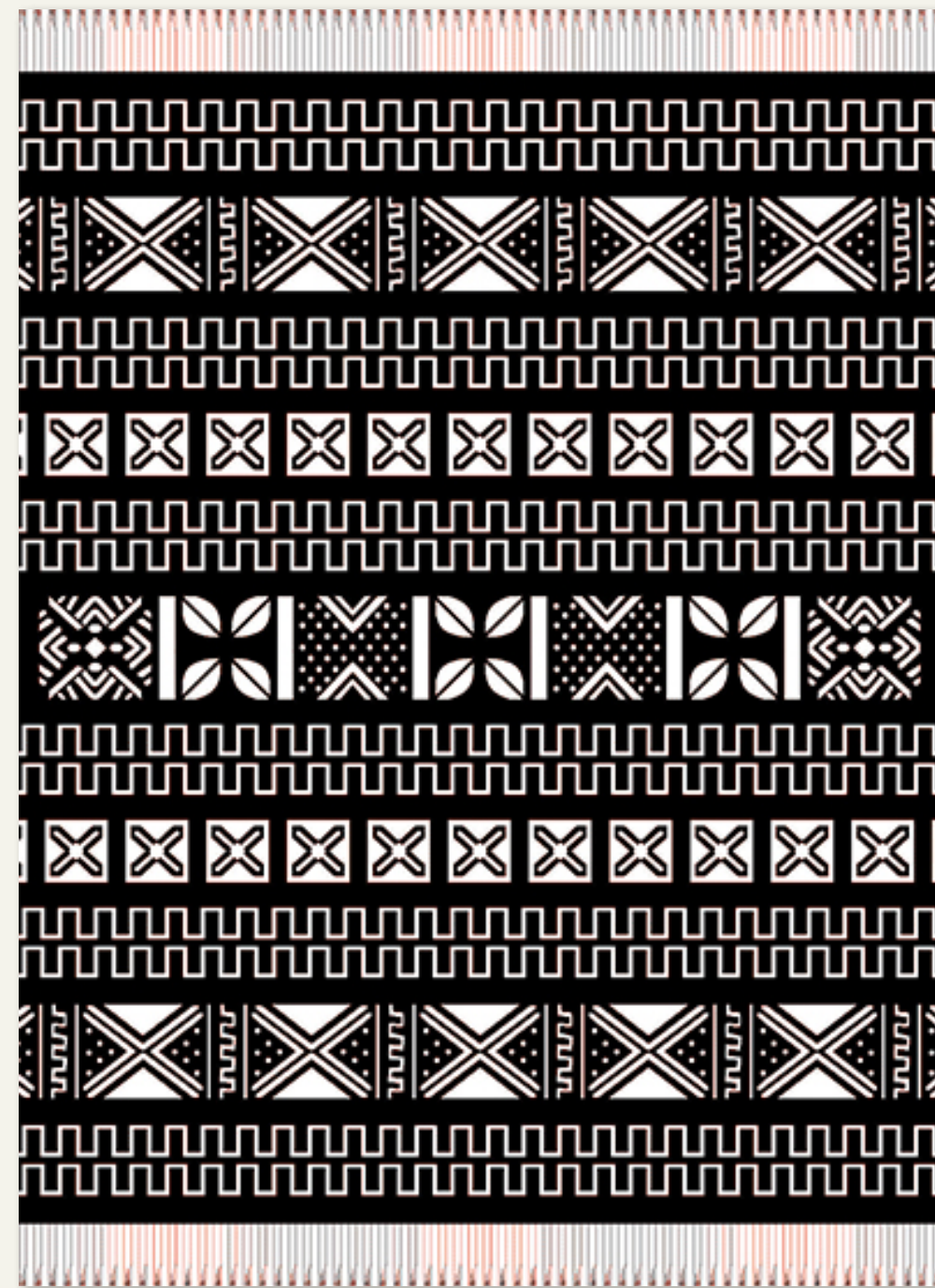
MUD CLOTH STORY



The traditional dyed cotton fabrics of the people of Mali are the inspiration behind this intricate mud cloth throw. Since its early roots in this rich culture, it is the men's duty to weave the fabric, after which it is handed over to the women. They dye the fabric, using mud that has been fermented for up to a year. The fabric is then dried in the sun and symbolic patterns are painted on by hand. Traditionally worn by hunters, the patterns are rich in cultural significance, referring to historical events, mythological concepts or proverbs. The rock art in the Sahara Desert suggests that northern Mali has been inhabited since 10,000 BC, when the Sahara was fertile and rich in wildlife. By 300 BC, large organised settlements had developed, most notably near Djenné, one of West Africa's oldest cities.

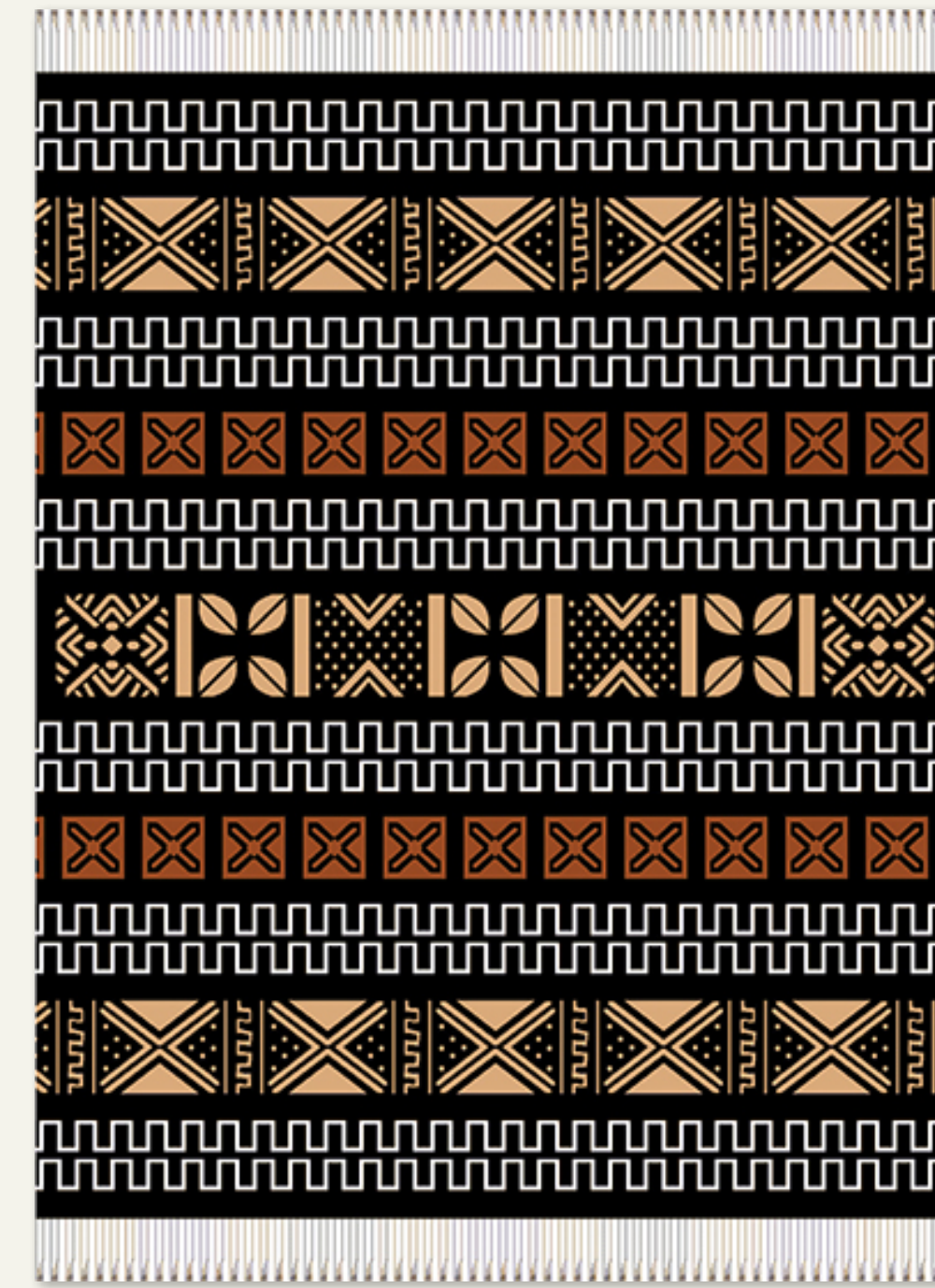


MUD CLOTH
Black / Natural



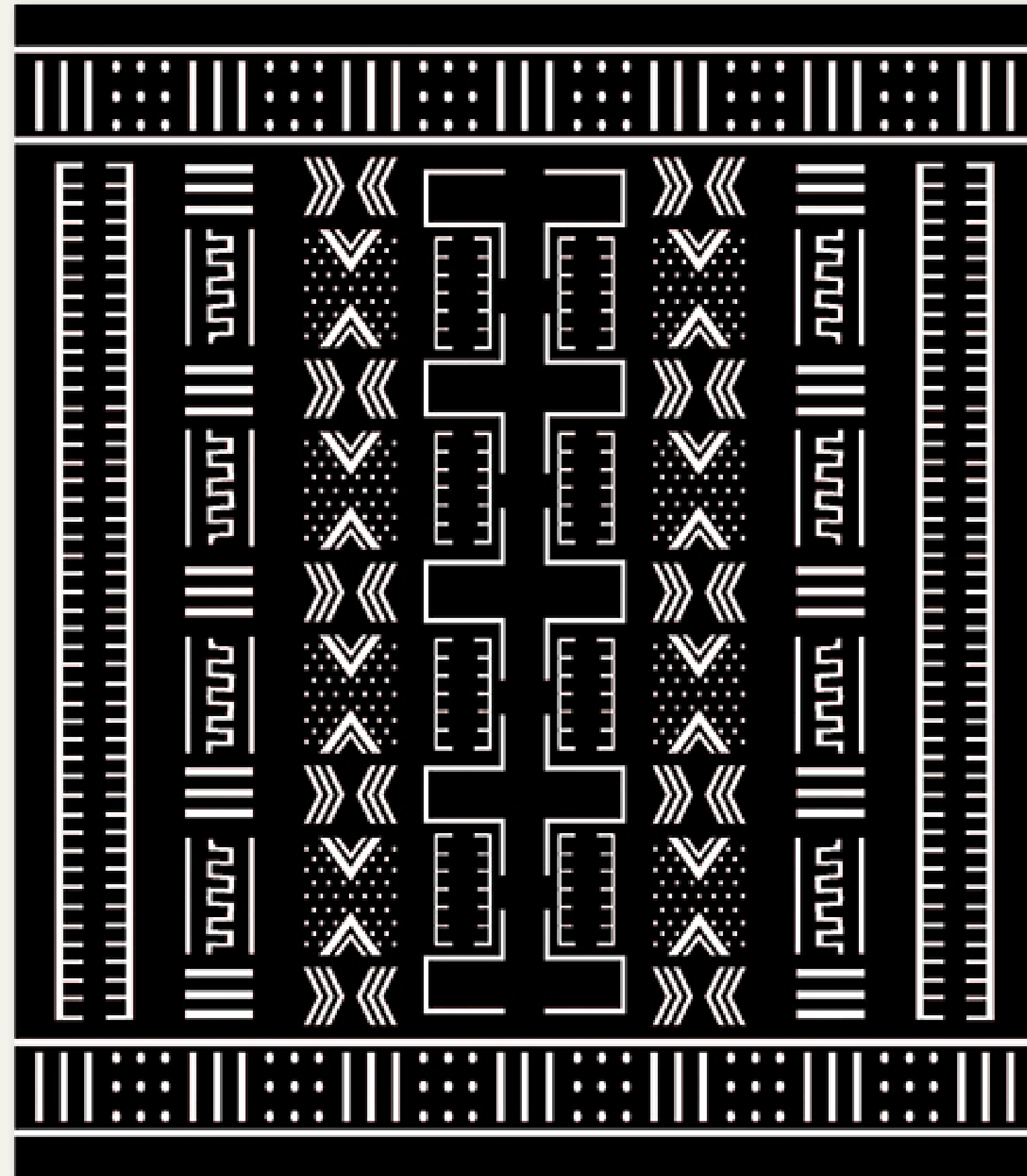
Product Code: ADS9718803MA
Composition: 100% Super soft acrylic, double faced jacquard weave
GSM: 300 g/m2
Size: 130cm x 180cm / 51" x 71"

MUD CLOTH MULTI
Black / Clay



Product Code: ADT1178801MA
Composition: 100% Super soft acrylic, double faced jacquard weave
GSM: 300 g/m2
Size: 130cm x 180cm / 51" x 71"

MUD CLOTH
Black / White



Product Code: CSS9820301MA
Composition: 50% Cotton / 45% Super soft acrylic / 5% Polyester
GSM: 480 g/m2
Size: 200cm x 230cm / 79" x 90"

MUD CLOTH
Mink / Bone



Product Code: CSS9820302MA
Composition: 50% Cotton / 45% Super soft acrylic / 5% Polyester
GSM: 480 g/m2
Size: 200cm x 230cm / 79" x 90"



MY
NDEBELE
STORY



Inspired by the unique tradition and style of Ndebele house painting, this vibrant and beautifully patterned throw is bursting with Ndebele culture. The patterns and expressive symbols created on the walls of the houses serve as a form of communication between the different groups of the Ndebele people originating from the north-eastern parts of South Africa and into the southern parts of Zimbabwe. It is also said that a well-painted home shows the talent and taste of the mother of the household. Culturally, each Ndebele woman has a marriage blanket, called an nguba. She wears this blanket throughout her entire life. The blanket is embellished with different types of beads to signify the different events in her life, such as her son attaining manhood.



NDEBELE BEADS

Black / Natural



Product Code: BVS8367801MA
Composition: 100% Super soft acrylic, triple jaquard weave, open selvedge
GSM: 360 g/m²
Size: 140cm x 180cm / 55" x 71"

NDEBELE ART

Cerise / Radiant Orchid



Product Code: BVS8377802MA
Composition: 100% super soft acrylic, triple jaquard weave, open selvedge
GSM: 360 g/m²
Size: 140cm x 180cm / 55" x 71"

NDEBELE ART

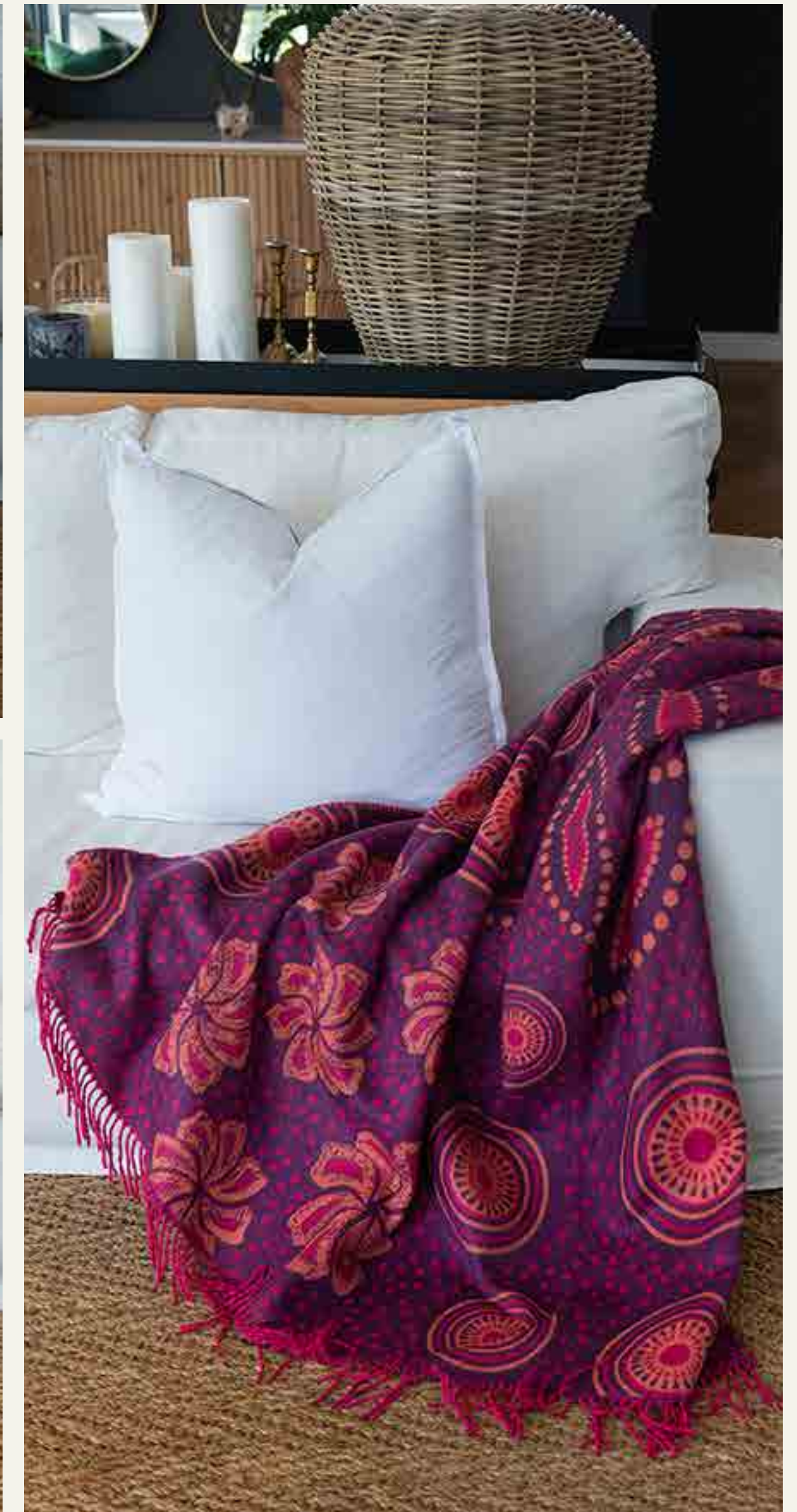
Wild Dove / Iron



Product Code: BVS8377803MA
Composition: 100% super soft acrylic, triple jaquard weave, open selvedge
GSM: 360 g/m²
Size: 140cm x 180cm / 55" x 71"



MY
SHWESHWE
STORY



The colourful Shweshwe fabric of Southern Africa was the inspiration behind this vibrant throw. Named after 19th Century Sotho King, Moshoeshe 1, Shweshwe is the quintessential fabric of Southern Africa. Traditionally, the fabric is worn by newly married Xhosa women, known as *makoti*, and also married Sotho women. Today the cloth has become multicultural and even Pan-African. The beautiful patterns and designs are created for a wide number of occasions, such as traditional ceremonies and weddings, as well as playing a large role in contemporary fashion.

SHWESHWE

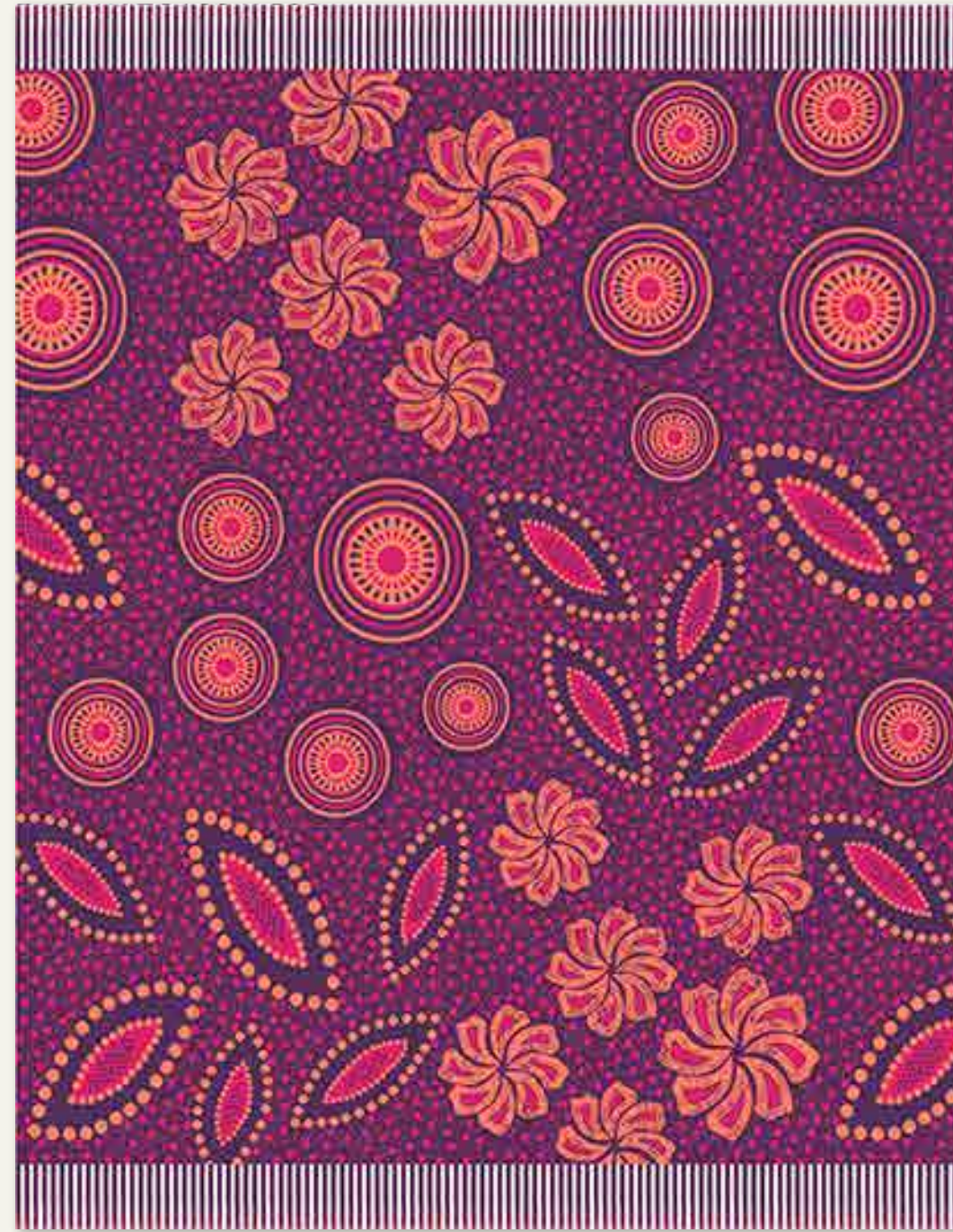
Cocoa / Nugget Gold



Product Code: BVT9847801MA
Composition: 100% Super soft acrylic, triple jaquard weave, open selvedge
GSM: 360 g/m2
Size: 140cm x 180cm / 55" x 71"

SHWESHWE

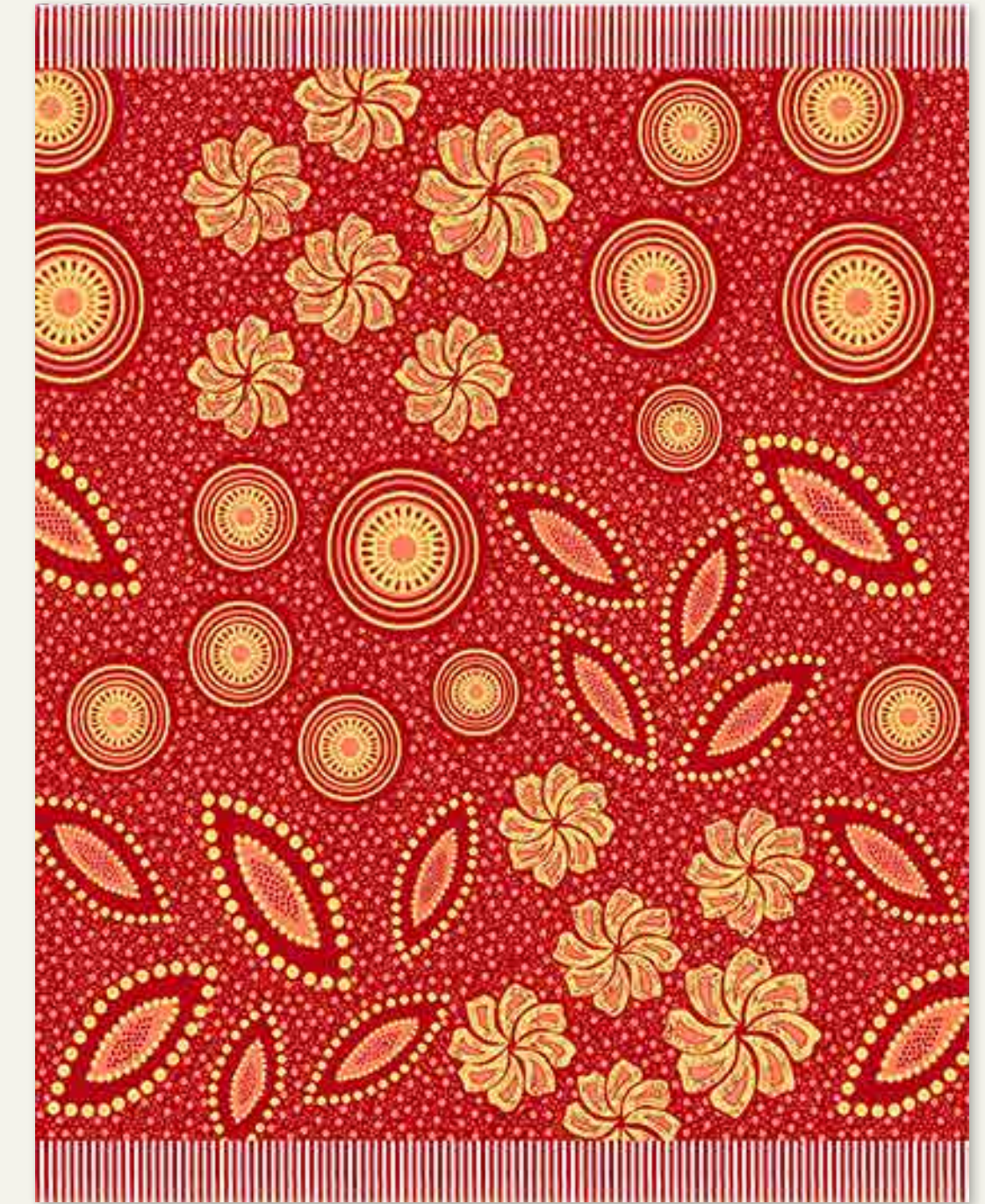
Grape / Cerise



Product Code: BVT9847805MA
Composition: 100% Super soft acrylic, triple jaquard weave, open selvedge
GSM: 360 g/m2
Size: 140cm x 180cm / 55" x 71"

SHWESHWE

Paprika / Firecracker



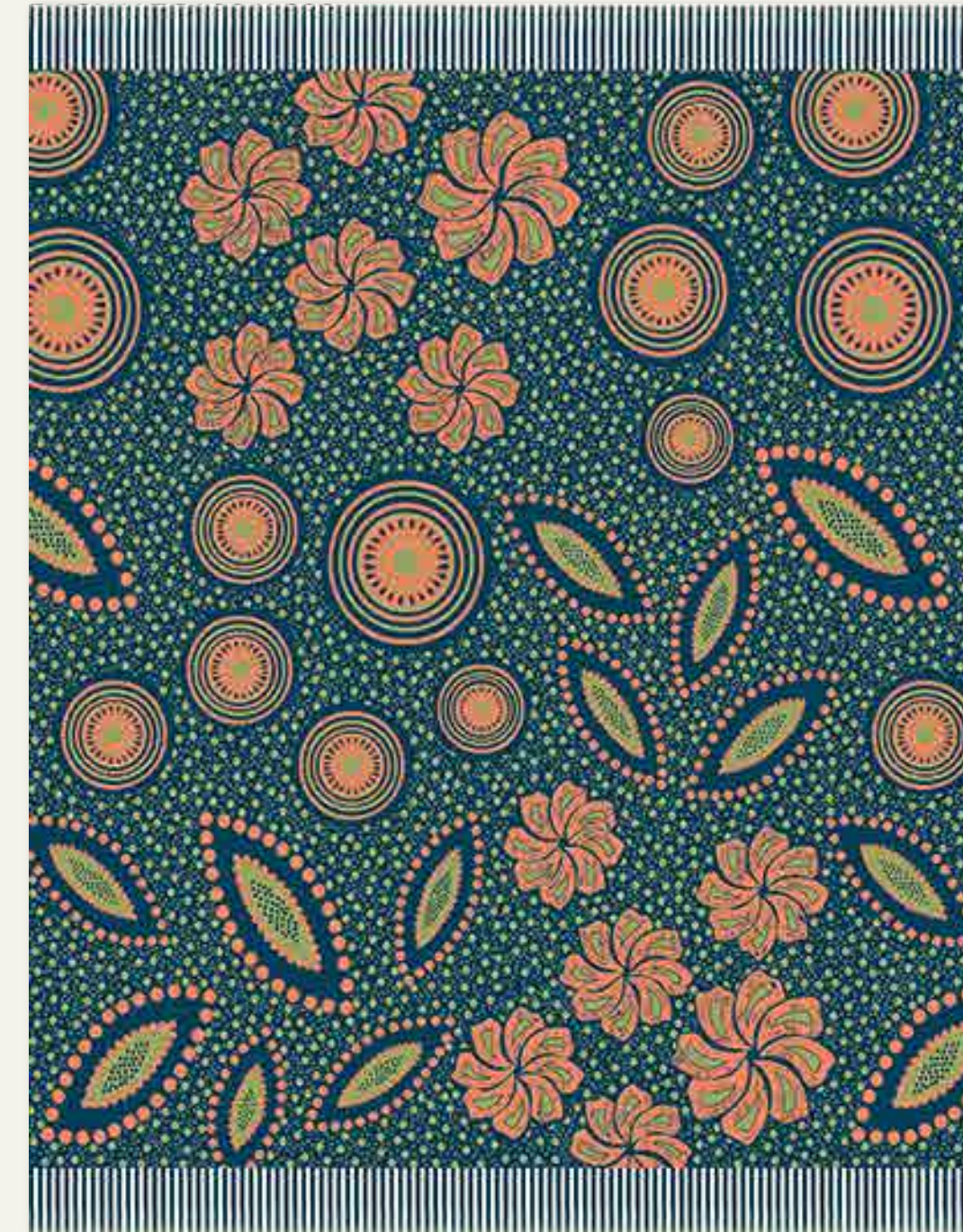
Product Code: BVT9847806MA
Composition: 100% Super soft acrylic, triple jaquard weave, open selvedge
GSM: 360 g/m2
Size: 140cm x 180cm / 55" x 71"

SHWESHWE
Navy / Aquamarine



Product Code: BVT9847807MA
Composition: 100% Super soft acrylic, triple jaquard weave,
open selvedge
GSM: 360 g/m2
Size: 140cm x 180cm / 55" x 71"

SHWESHWE
Teal / Avocado



Product Code: BVT9847809MA
Composition: 100% Super soft acrylic, triple jaquard weave,
open selvedge
GSM: 360 g/m2
Size: 140cm x 180cm / 55" x 71"



MY
ZULU
STORY



Basket weaving

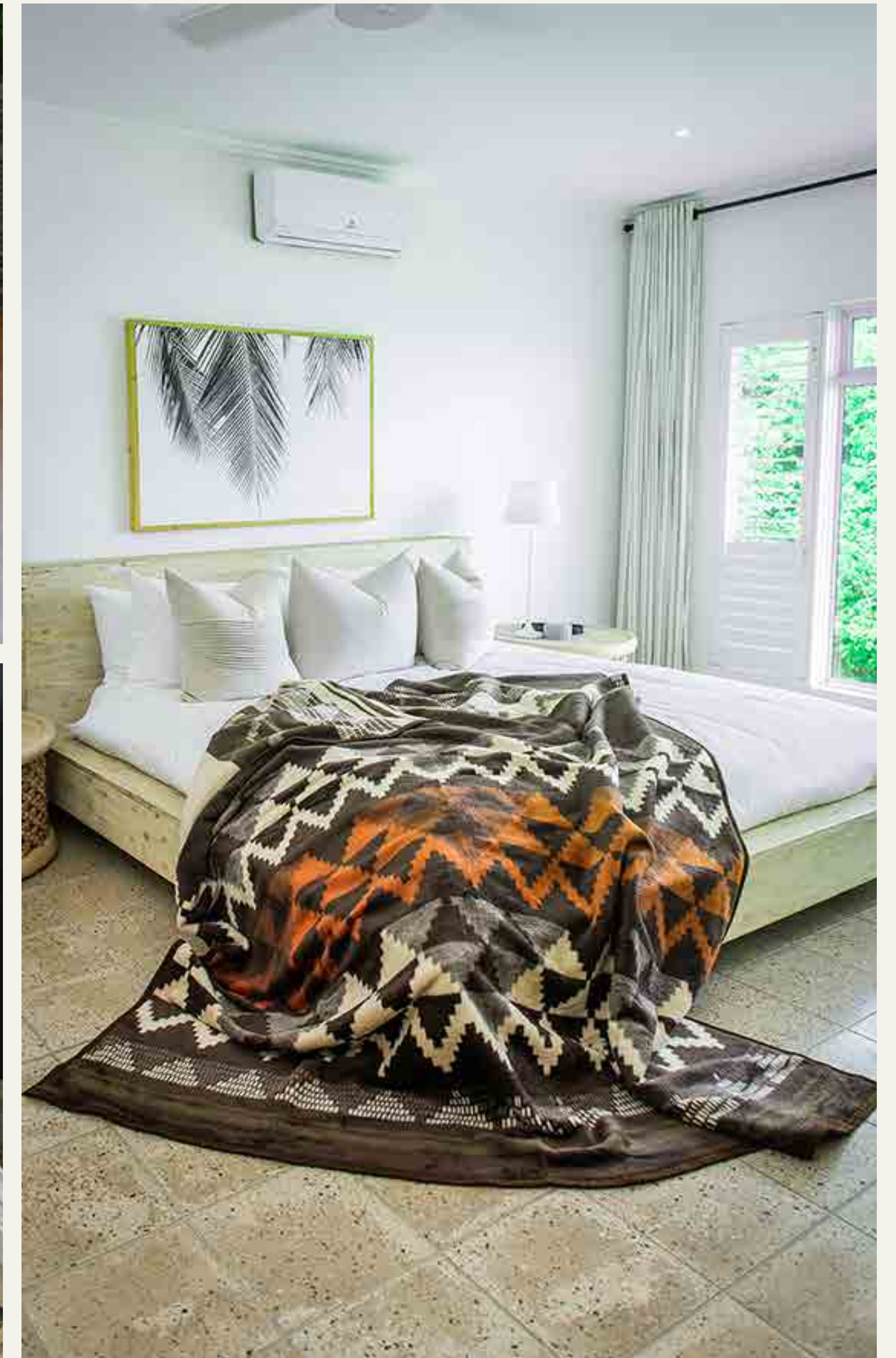
This intricate throw has been inspired by the traditional craft of Zulu basket weaving. The art of Zulu basket weaving has been handed down from generation to generation. Woven from the dyed leaves of the ilala palm, the decorative woven baskets are made for special occasions, such as weddings, the birth of a child, or a good harvest. Each basket is woven by hand and it can take up to one month to produce a medium size basket.

The geometric designs also carry deep symbolism; for instance, if the triangle's tip is pointing up it means that the woman is unmarried. Married women place two triangles together in a form of a diamond, representing fertility. Every basket is a unique piece of art.

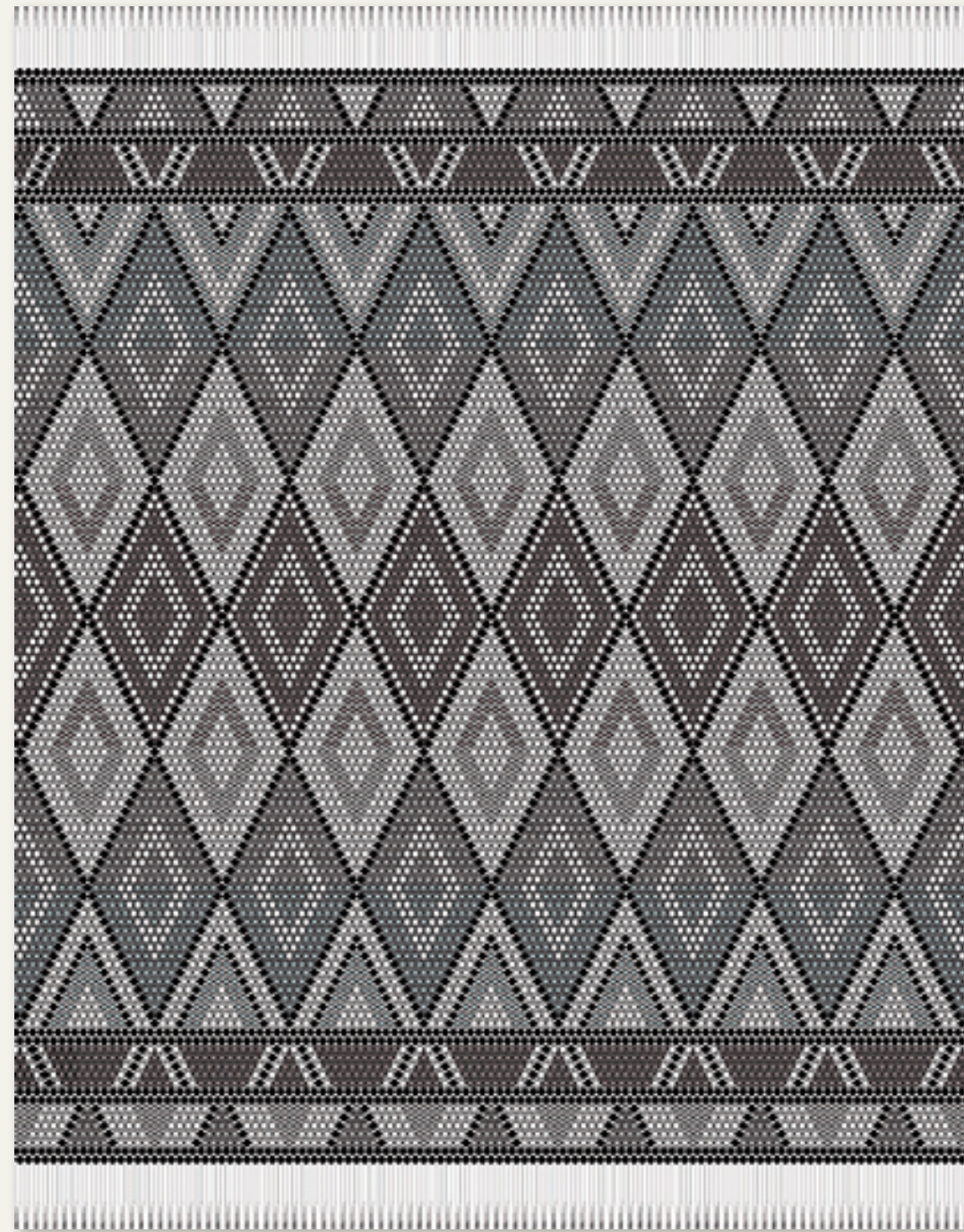
Beadwork

The art of Zulu beadwork has been handed down from generation to generation through the elder women of the family. The beadwork is used as a form of communication between the sexes. The predominant shape is the triangle which is used to communicate whether the wearer is single or married.

Colour also plays an important role, such as white for spiritual love and purity, and green for contentment. A maximum of seven colours are used and they have both positive and negative connotations.



ZULU BEADS
Black / Iron



Product Code: BVU3937803MA
Composition: 100% super soft acrylic, triple jaquard weave, open selvedge
GSM: 360 g/m2
Size: 140cm x 180cm / 55" x 71"

ZULU BEADS
Yellow / Red



Product Code: BVU2877801MA
Composition: 100% super soft acrylic, triple jaquard weave, open selvedge
GSM: 360 g/m2
Size: 140cm x 180cm / 55" x 71"

ZULU BASKET
Cocoa / Bone



Product Code: CST0010306MA
Composition: 50% Cotton / 45% Super soft acrylic / 5% Polyester
GSM: 480 g/m2
Size: 200cm x 230cm / 79" x 90"

ZULU BASKET
Coffee / Clay



Product Code: CST0010304MA
Composition: 50% Cotton / 45% Super soft acrylic / 5% Polyester
GSM: 480 g/m2
Size: 200cm x 230cm / 79" x 90"



MY
XHOSA
STORY

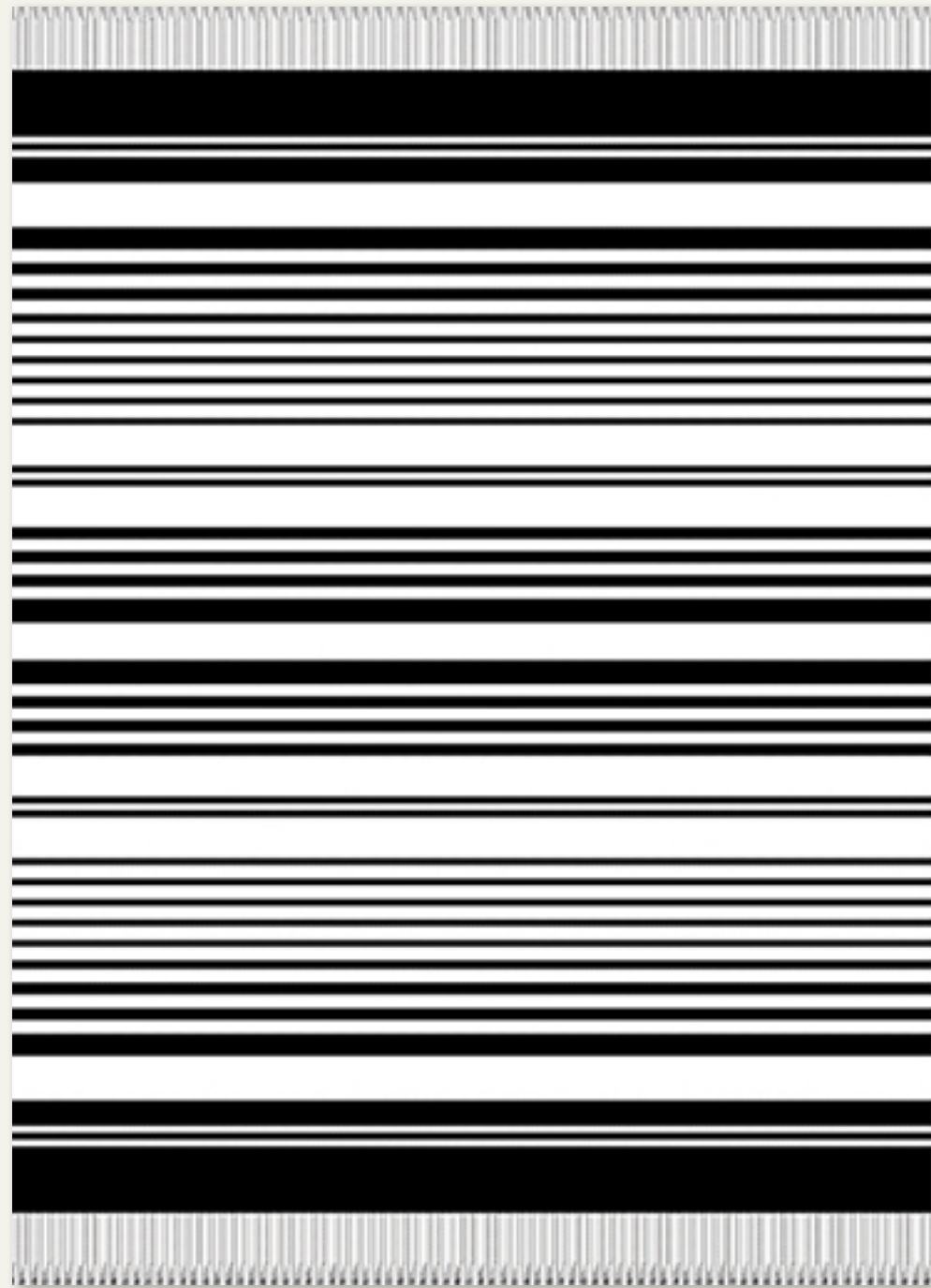


This striking throw is inspired by the stripes of timeless Xhosa clothing and blankets. Unique to the Xhosa people, the predominant use of black and white in their designs is steeped in tradition. Cultural rituals are symbolic through every stage of life and development for the Xhosa people, such as knowing one's *isiduko* (clan). This is considered so important that when two strangers meet for the first time, the first identity that gets shared is *isiduko*. This forms the origins of *ubuntu* (human kindness), a behaviour synonymous with this nation, as extending a helping hand to a complete stranger when in need. It is also the roots to the saying "it takes a village to raise a child".



XHOSA STRIPE

Black / Natural



XHOSA ITHUMBU

Black / Natural



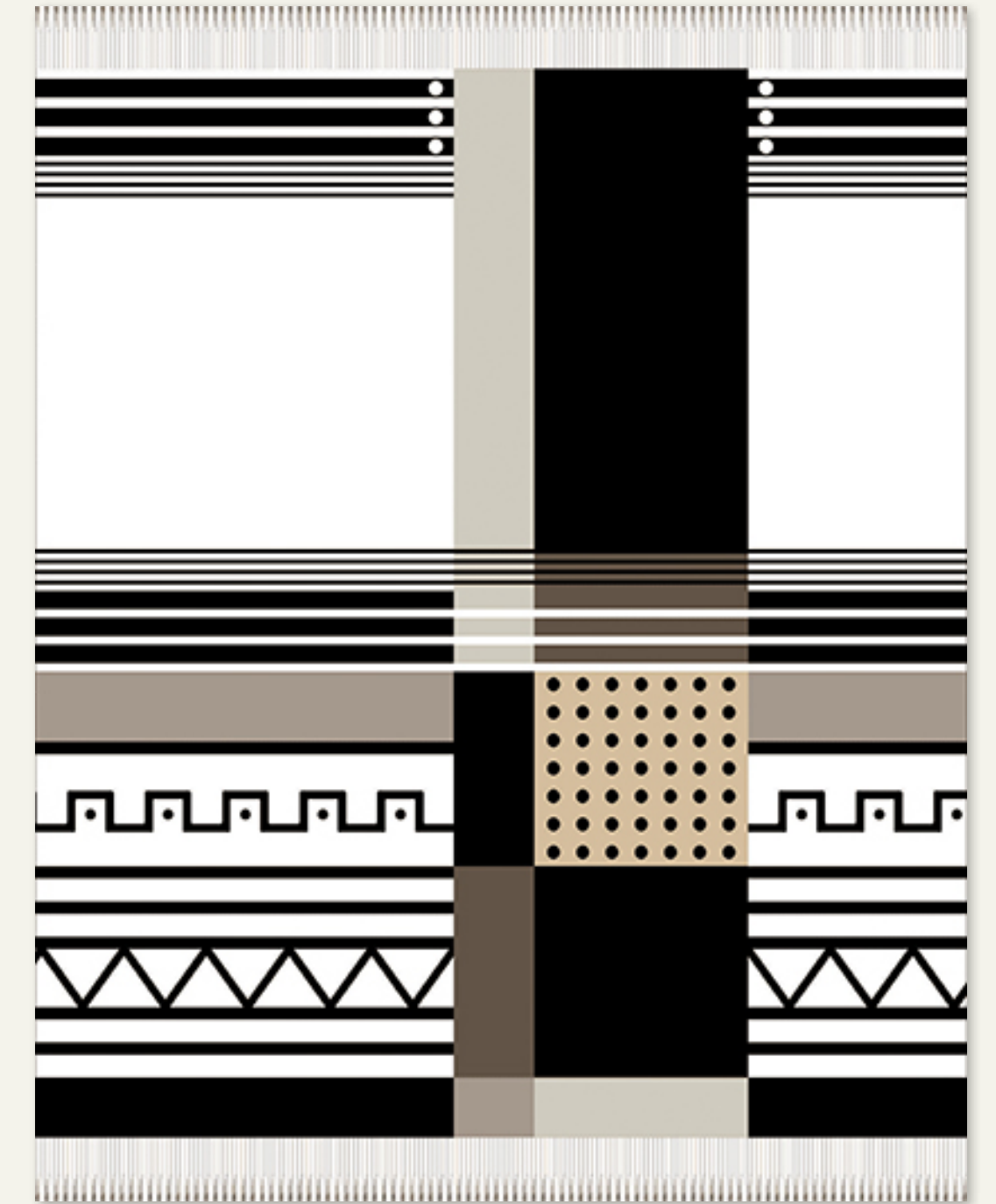
XHOSA UMBHACO

Black / Natural



XHOSA UMBHACO

Black / Cobblestone



Product Code: MYS8358801MA
Composition: 100% Super soft acrylic, single faced dobby or jacquard weave
GSM: 260 g/m2
Size: 130cm x 180cm / 51" x 71"

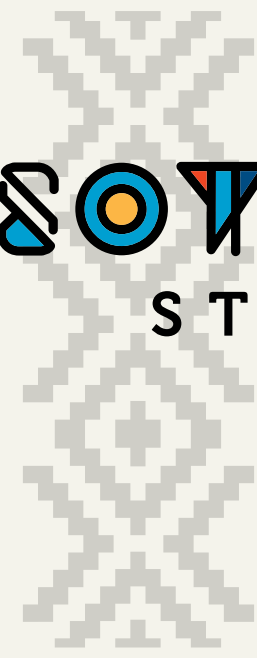
Product Code: ADS8338801MA
Composition: 100% Super soft acrylic, double faced jacquard weave
GSM: 300 g/m2
Size: 130cm x 180cm / 51" x 71"

Product Code: BVS8347801MA
Composition: 100% Super soft acrylic, triple jacquard weave, open selvedge
GSM: 360 g/m2
Size: 140cm x 180cm / 55" x 71"

Product Code: BVS8347803MA
Composition: 100% Super soft acrylic, triple jacquard weave, open selvedge
GSM: 360 g/m2
Size: 140cm x 180cm / 55" x 71"



MY
BASOTHO
STORY



The Basotho Heritage Blankets are recognised the world over as the iconic wearing blanket of Southern Africa. The tradition, culture and custom of the revered blankets tells the story of Lesotho, a nation steeped in pride. During the mid-1800's King Moshoeshe I, the founder of the Basotho nation, was gifted a blanket which he draped around his shoulders and so began the blanket wearing tradition. The country's rich history is woven into every fibre of these striking and beautifully crafted blankets.

This throw was inspired by the many unique motifs, such as the corn-cob, the crown and the mokorotlo (traditional Basotho hat). These cultural motifs are found in the designs of many of the Basotho Heritage brands, such as the famous Seanamarena and Victoria England.



BASOTHO
Navy / Aquamarine



Product Code: BVS9857801MA
Composition: 100% super soft acrylic, triple jaquard weave, open selvedge
GSM: 360 g/m²
Size: 140cm x 180cm / 55" x 71"

BASOTHO
Light Aqua / Kingfisher



Product Code: BVS9857807MA
Composition: 100% super soft acrylic, triple jaquard weave, open selvedge
GSM: 360 g/m²
Size: 140cm x 180cm / 55" x 71"

BASOTHO
Cerise / Grape



Product Code: BVS9857808MA
Composition: 100% super soft acrylic, triple jaquard weave, open selvedge
GSM: 360 g/m²
Size: 140cm x 180cm / 55" x 71"

BASOTHO
Firecracker / Royal



Product Code: BVS9857810MA
Composition: 100% super soft acrylic, triple jaquard weave, open selvedge
GSM: 360 g/m2
Size: 140cm x 180cm / 55" x 71"

BASOTHO
Iron / Bone



Product Code: BVS9857812MA
Composition: 100% super soft acrylic, triple jaquard weave, open selvedge
GSM: 360 g/m2
Size: 140cm x 180cm / 55" x 71"



MY
TSONGA
STORY



The Tsonga people are a vibrant ethnic group who mainly live in South Africa and the southern region of Mozambique. They are known for their colourful traditional clothing, as well as their music and energetic dance style. During cultural festivities, the women do most of the singing and dancing, while the men play the musical instruments. The women wear the Xibelani wraparound skirts which are made from a variety of brightly coloured materials and adorned with beadwork. They are designed to enhance the movements of their bodies while dancing. The Tsonga are known for their love of colour and this is evident in their clothing, head wraps and accessories. Their colourful clothing has been the inspiration behind many South African wedding designs.



TSONGA
Old Royal / Cerise



Product Code: BVU2477801MA
Composition: 100% super soft acrylic, triple jacquard weave, open selvedge
GSM: 360 g/m²
Size: 140cm x 180cm / 55" x 71"



MY
KANGA
STORY



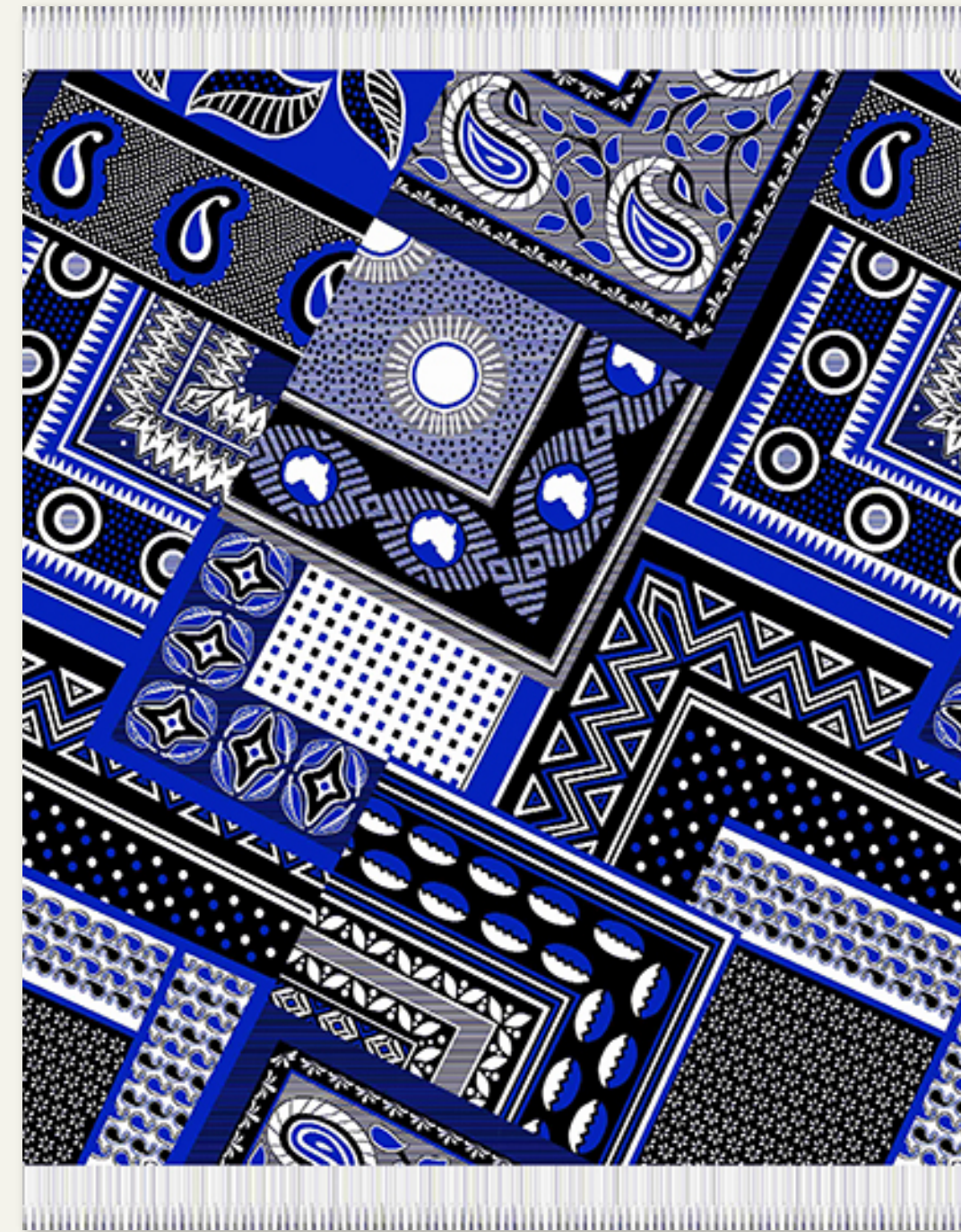
The kanga is a colourful, lightweight fabric worn by women and occasionally men throughout various parts of Africa, including Southern Africa, the Great Lakes region and the Eastern coast of Africa. It is a piece of printed cotton fabric which is usually wrapped around the body and worn most often as a skirt, a headdress or an apron. It can even be used as a household item for example a towel. Even though the kanga is widely used as an everyday item, it does also hold cultural significance. In Eastern Africa it is often given as a gift for special occasions and in Tanzania it is given to grieving families who are mourning the death of a loved one. The design of a traditional kanga has a border all round and a central motif which is different to that of the border design. In the early 1900s, proverbs, sayings and slogans were added. The earliest patterns featured small dots similar to the feathers of the guinea fowl. The Swahili word for guinea fowl is kanga and this is how this versatile fabric got its name.



KANGA
Black / Red



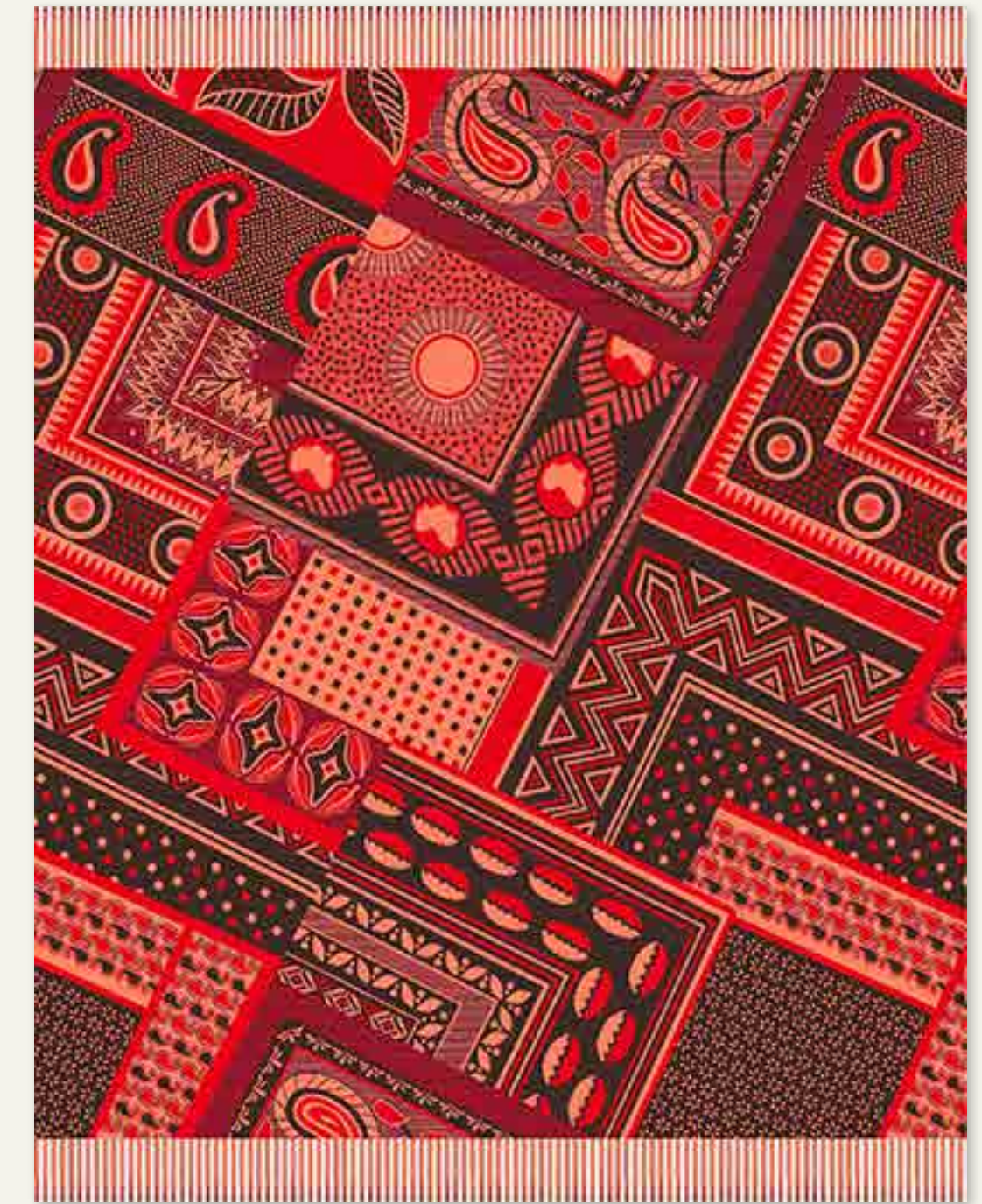
KANGA
Black / Old Royal



KANGA
Teal / Aquamarine



KANGA
Cocoa / Red



Product Code: BVU2517801MA
Composition: 100% super soft acrylic, triple jaquard weave, open selvedge
GSM: 360 g/m²
Size: 140cm x 180cm / 55" x 71"

Product Code: BVU2517802MA
Composition: 100% super soft acrylic, triple jaquard weave, open selvedge
GSM: 360 g/m²
Size: 140cm x 180cm / 55" x 71"

Product Code: BVU2517804MA
Composition: 100% super soft acrylic, triple jaquard weave, open selvedge
GSM: 360 g/m²
Size: 140cm x 180cm / 55" x 71"

Product Code: BVU2517807MA
Composition: 100% super soft acrylic, triple jaquard weave, open selvedge
GSM: 360 g/m²
Size: 140cm x 180cm / 55" x 71"

MY
RWANDA
STORY



The women of Rwanda are world-renowned for their woven baskets and produce a number of different styles. These baskets are handcrafted by female artisans whose skill has been passed down from mother to daughter through the generations. The baskets are an important part of Rwandan culture and are used in everyday life to carry food and grains. The agaseke, characterised by its conical fitted lid, is often used to carry gifts for important ceremonies such as weddings and christenings. The traditional woven basket bowls of Rwanda have become widely recognised and used as beautiful and unique wall art. Hand-dyed strands of mainly sisal and grass fibre are woven together to create the geometric patterns in a combination of natural shades mixed with naturally-dyed colours. The iconic zigzag patterns symbolise two women holding hands in unity, reconciliation and hope for the future.

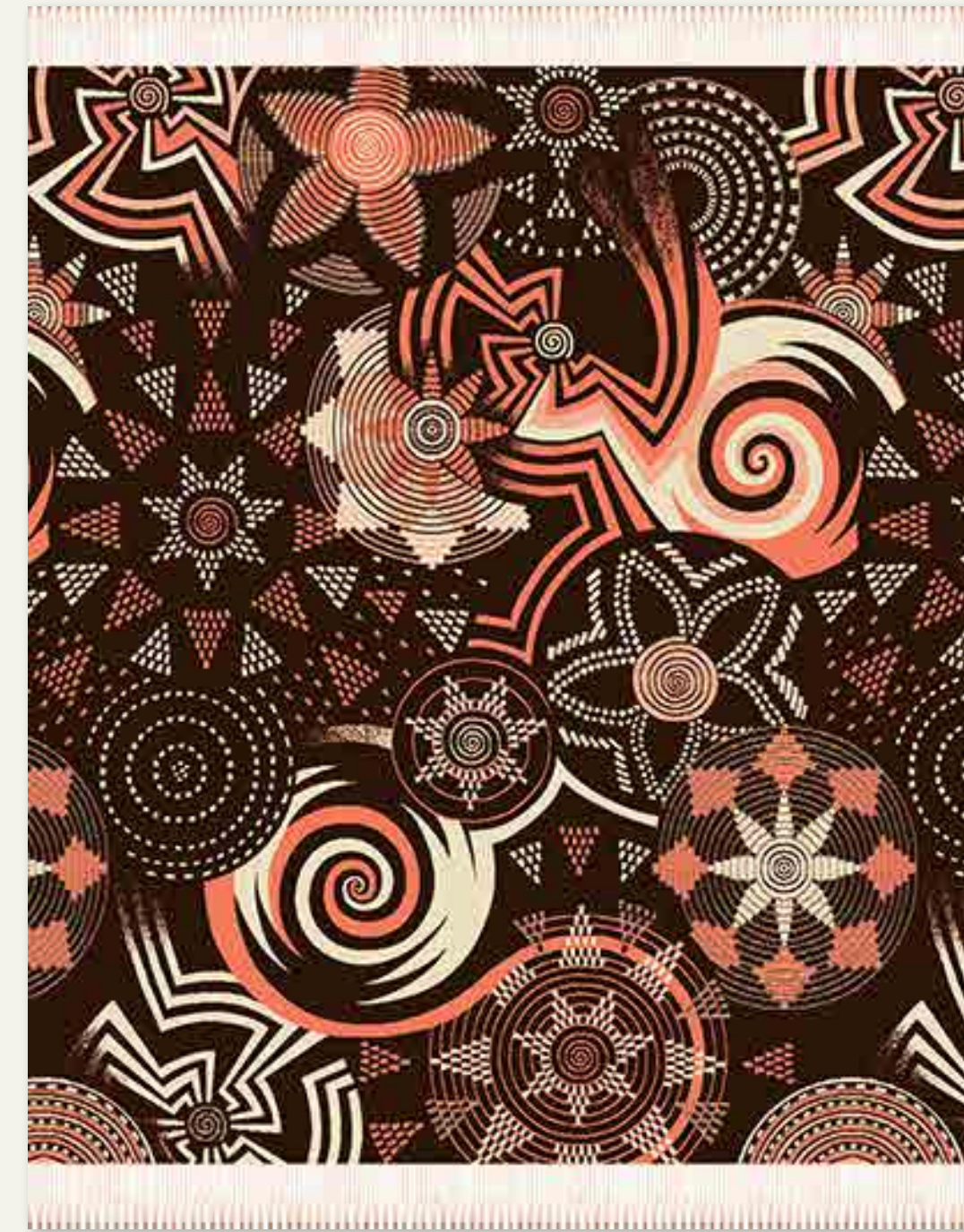


RWANDA
Cocoa / Leather



Product Code: BVU2507803MA
Composition: 100% super soft acrylic, triple jaquard weave, open selvedge
GSM: 360 g/m2
Size: 140cm x 180cm / 55" x 71"

RWANDA
Cocoa / Firecracker



Product Code: BVU2507809MA
Composition: 100% super soft acrylic, triple jaquard weave, open selvedge
GSM: 360 g/m2
Size: 140cm x 180cm / 55" x 71"

MY
AFRICA

TEXTILES INSPIRED BY AFRICAN CULTURE

DESIGNER
COLLECTION



The Designer

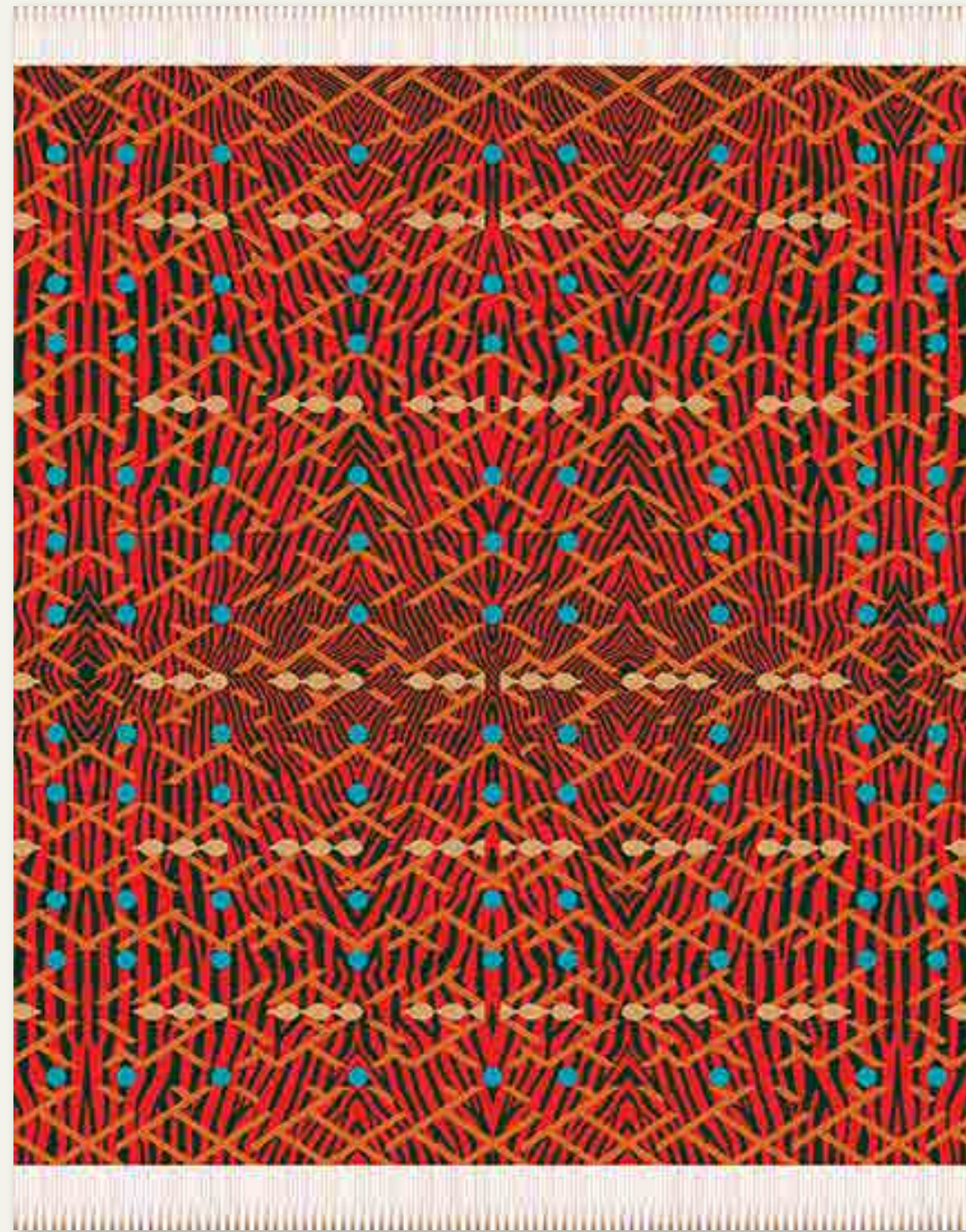
Glorinah Khutso Mabaso is a designer with a passion to re-awaken the ancient cultural knowledge of the African continent. Her company, Renaissance Design, specialises in the conceptualisation and creation of modern African patterns for a variety of brands. Using design as her language, she strives to be the mouthpiece of the ancient world. Glorinah believes in the preservation of African history through the creation of modern visual archives, documenting the continent's heritage and wealth which lives in its people, ancient tribal sounds, textures, patterns, dance, architecture and natural surroundings.

The Design

The Himba people of Namibia are a semi-nomadic tribe. The desert is their home and their unique way of life has been shaped by this environment. They are widely known for their "red" appearance. This distinctive look is created through their application of otjize, a mixture of butterfat and ochre pigment which is applied to the skin and hair. Otjize is symbolic of the earth's rich red colour, as well as blood, the essence of life.



HIMBA
Old Gold / Red



Product Code: BVU2717801MA
Composition: 100% super soft acrylic, triple jaquard weave,
open selvedge
GSM: 360 g/m2
Size: 140cm x 180cm / 55" x 71"

HIMBA
Oyster Grey / Cocoa



Product Code: BVU2717805MA
Composition: 100% super soft acrylic, triple jaquard weave,
open selvedge
GSM: 360 g/m2
Size: 140cm x 180cm / 55" x 71"



MY
AFRICA

TEXTILES INSPIRED BY AFRICAN NATURE

**SAVANNAH
COLLECTION**



MY
GIRAFFE
STORY



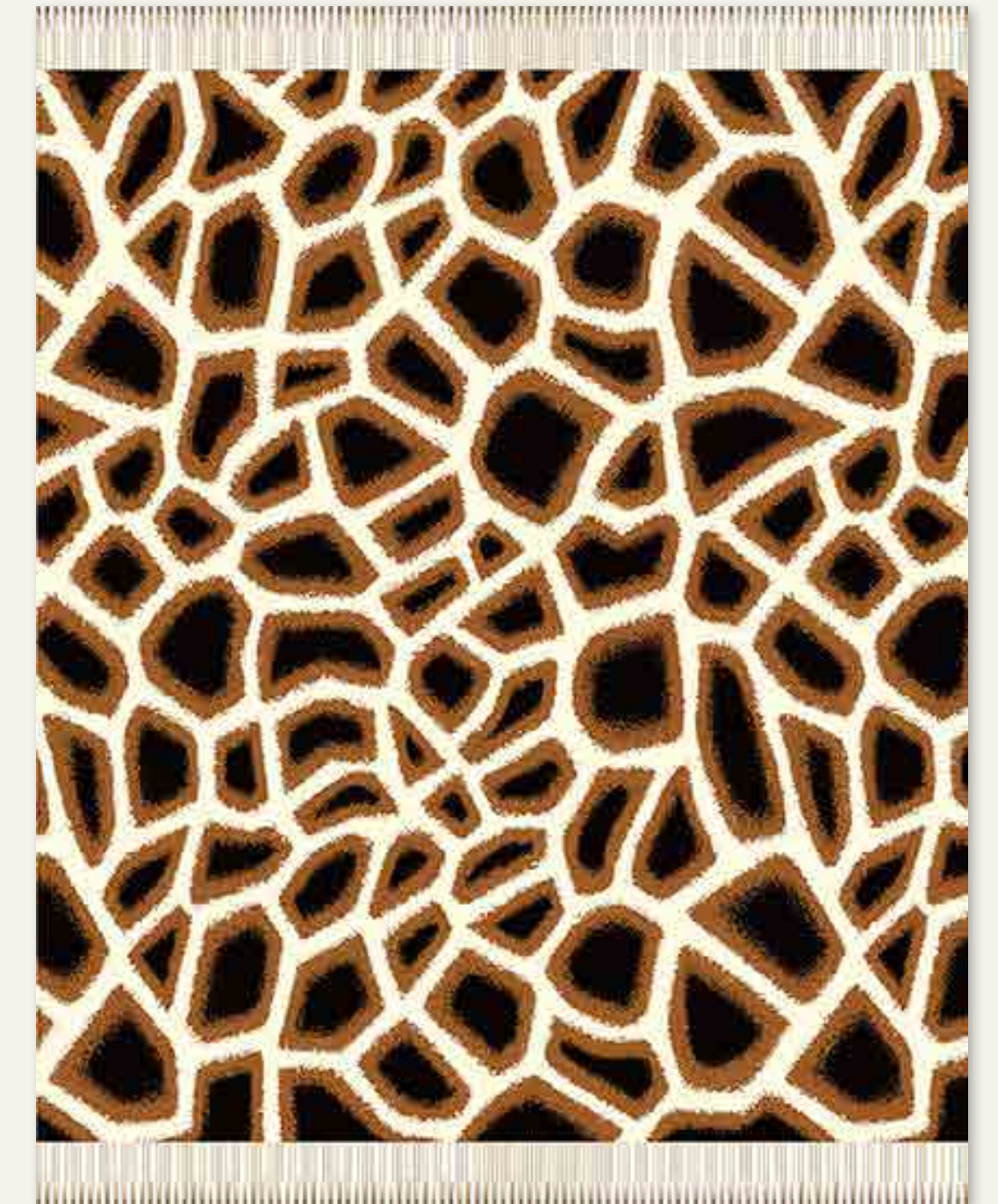
The giraffe has always been associated with elegance and natural curiosity. Many African traditions and cave paintings depict these unique creatures as magical and empowering. The name "Twiga" was bestowed upon the giraffe by the Shona people.

An old African folk tale tells of God speaking to His newly created animals as to their purpose on earth. As God spoke to Twiga, she stretched her neck to heaven to hear Him more clearly. God was pleased and gave her a long, elegant neck so she could reach the leaves of the tallest trees.

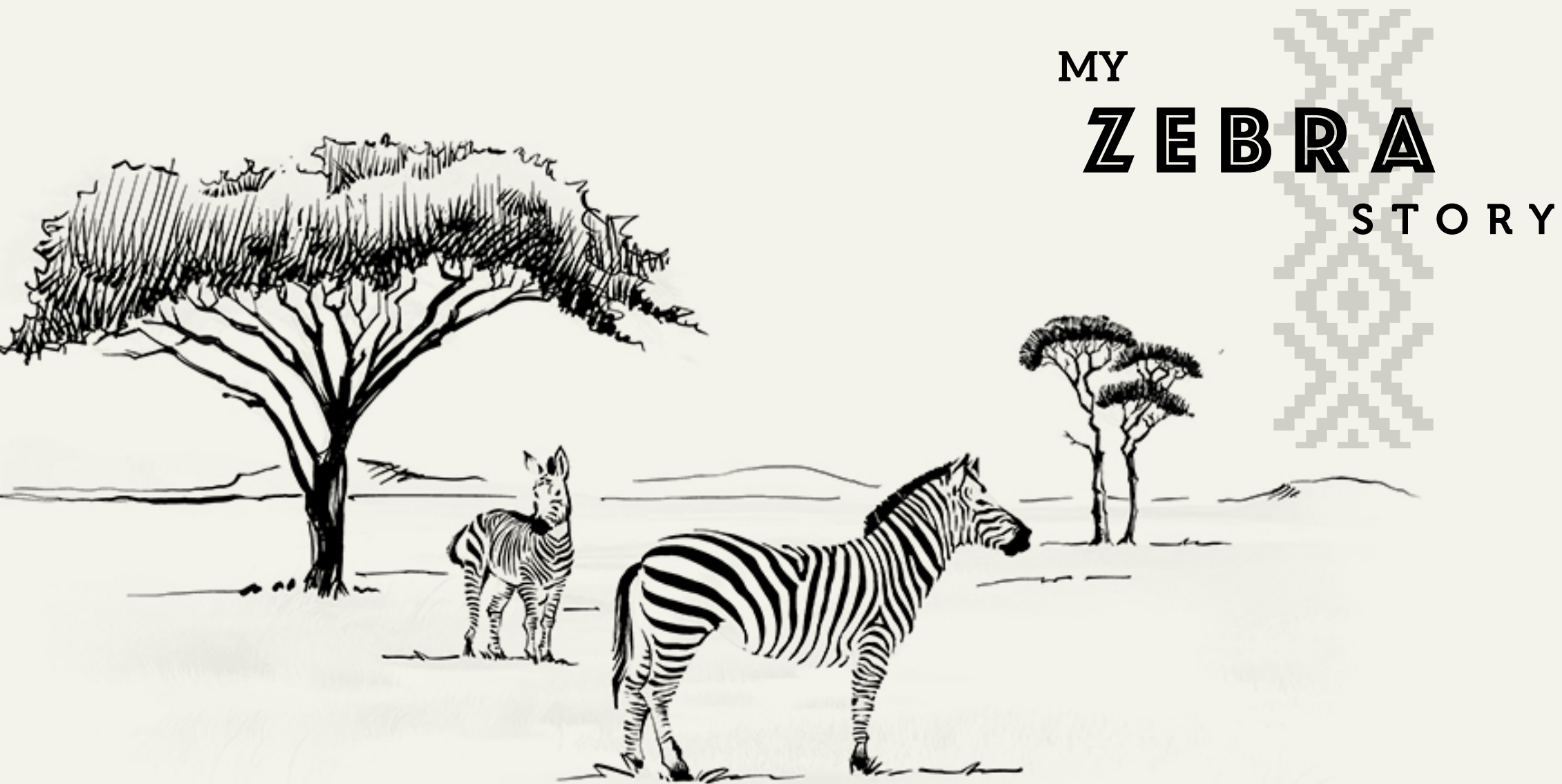
The giraffe is the tallest animal on earth and is known not only for its long neck and legs, but also for its distinctive coat patterns. These patterns are used to identify the various subspecies which roam the African savannahs and woodlands.



GIRAFFE SKIN
Ivory / Leather



Product Code: BVT5487803MA
Composition: 100% super soft acrylic, triple jacquard weave, open selvedge
GSM: 360 g/m2
Size: 140cm x 180cm / 55" x 71"



The zebra is recognised around the world by its distinctive black and white striped coat. Throughout the generations, the zebra has been the subject of many vibrant African folk tales of how it got its unique stripes. According to the ancient people of Nambia, the zebra was once all white and only acquired its black stripes after fighting with a baboon over a water hole. The zebra kicked the baboon so hard, that it lost its balance and stumbled into the baboon's fire. Sticks from the fire left scorch marks on the zebra's white coat, creating the black stripes.

Some believe that when zebras come together, their combined stripes act as camouflage which confuses their predators. This is why a herd of zebras is called a 'dazzle.'

Spiritually, the zebra is a symbol of individuality and intuition. It is also lauded for its agility and sure-footedness.

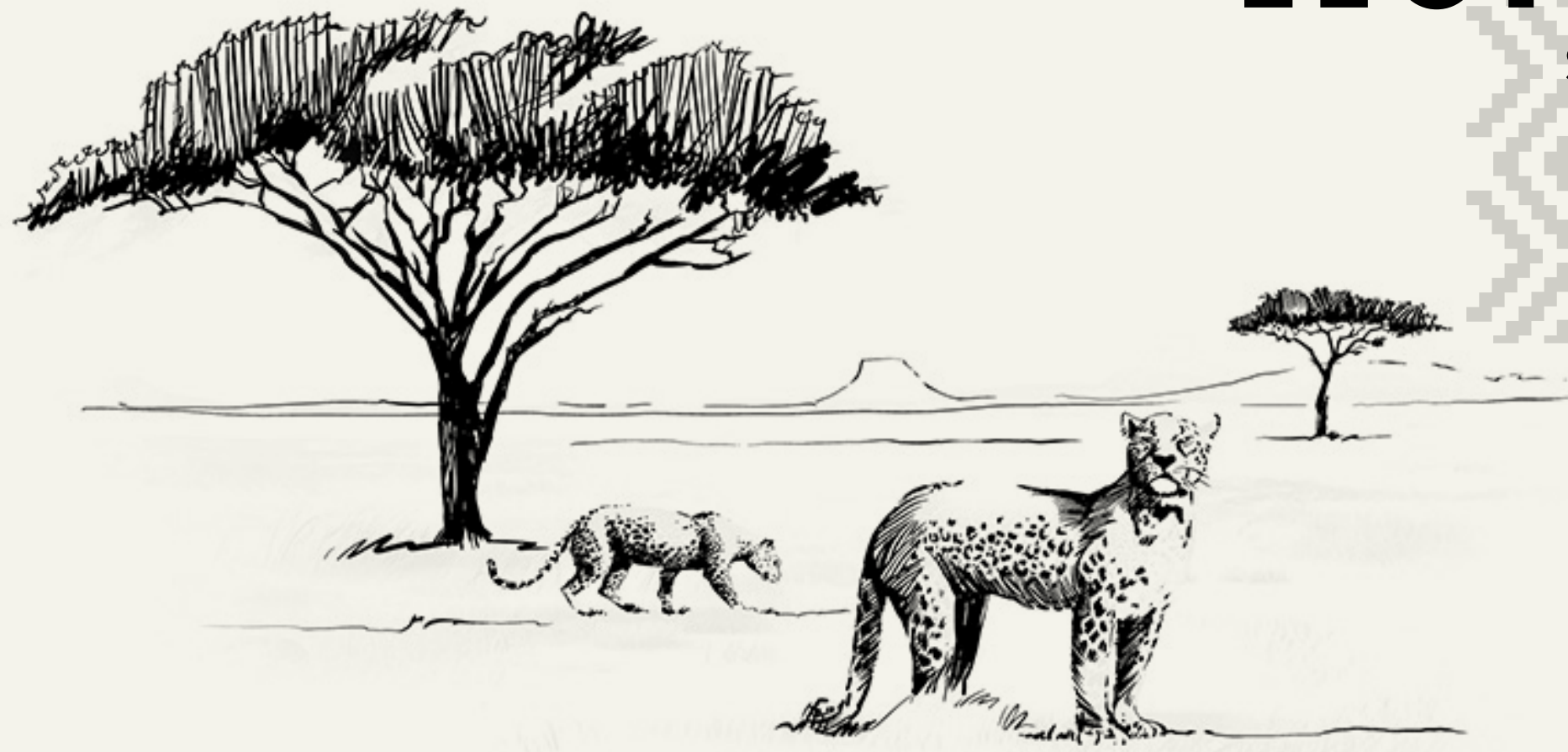


ZEBRA SKIN
Black / Dark Beige



Product Code: BVT3567801MA
Composition: 100% super soft acrylic, triple jacquard weave, open selvedge
GSM: 360 g/m2
Size: 140cm x 180cm / 55" x 71"

MY LEOPARD STORY



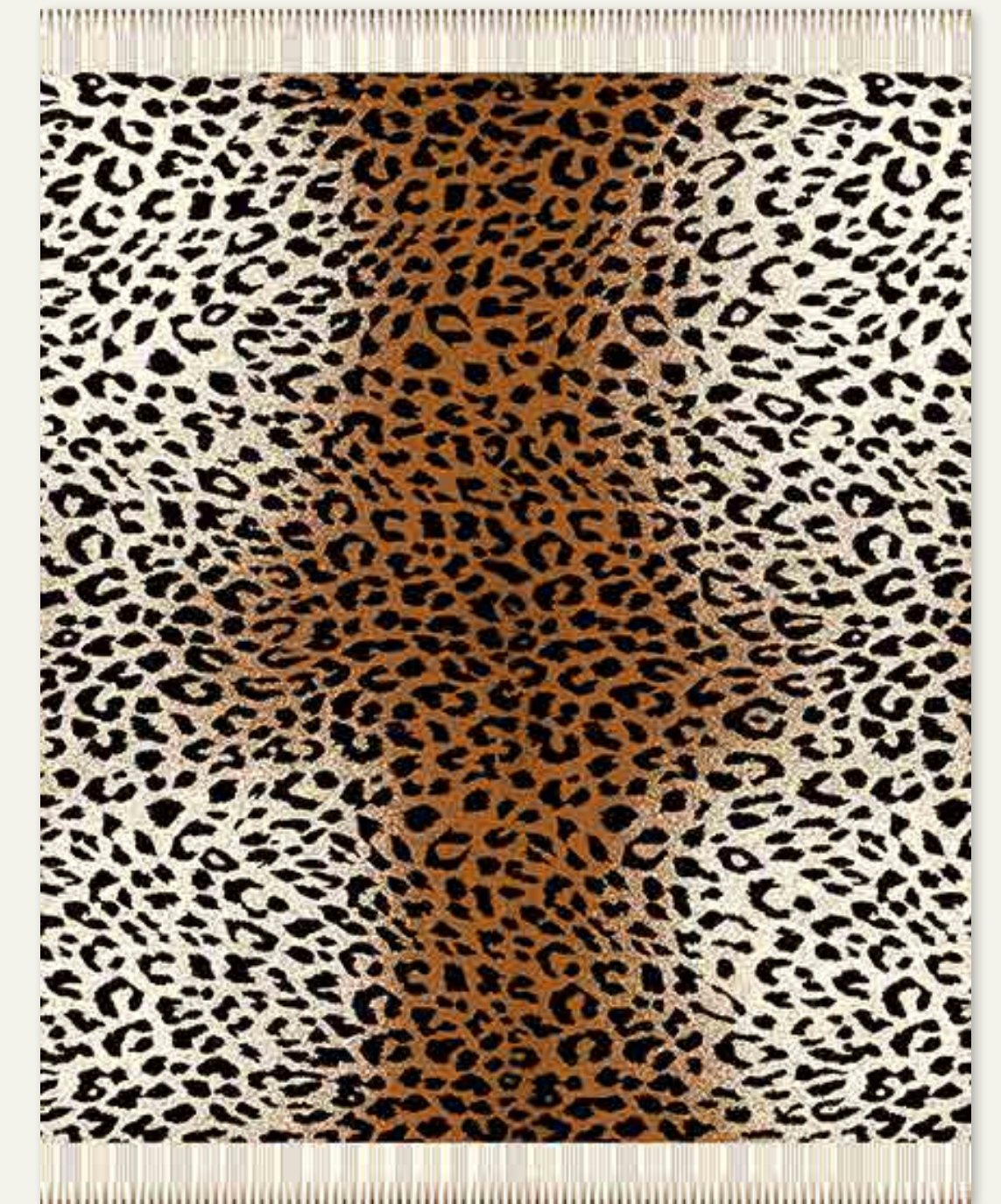
The leopard, known as the Great Watcher in many African cultures, is a symbol of nobility and courage. In ancient times, 'The Leopard' was a title bestowed upon a courageous king. And in the Zulu culture, leopard skins are still reserved for royalty.

It is also the most secretive and arguably one of the most beautiful of the big cats. Many African tribes believe that the leopard is a guide for the spirit of the dead, helping them find their resting place. Traditional healers also believe them to have magical powers.

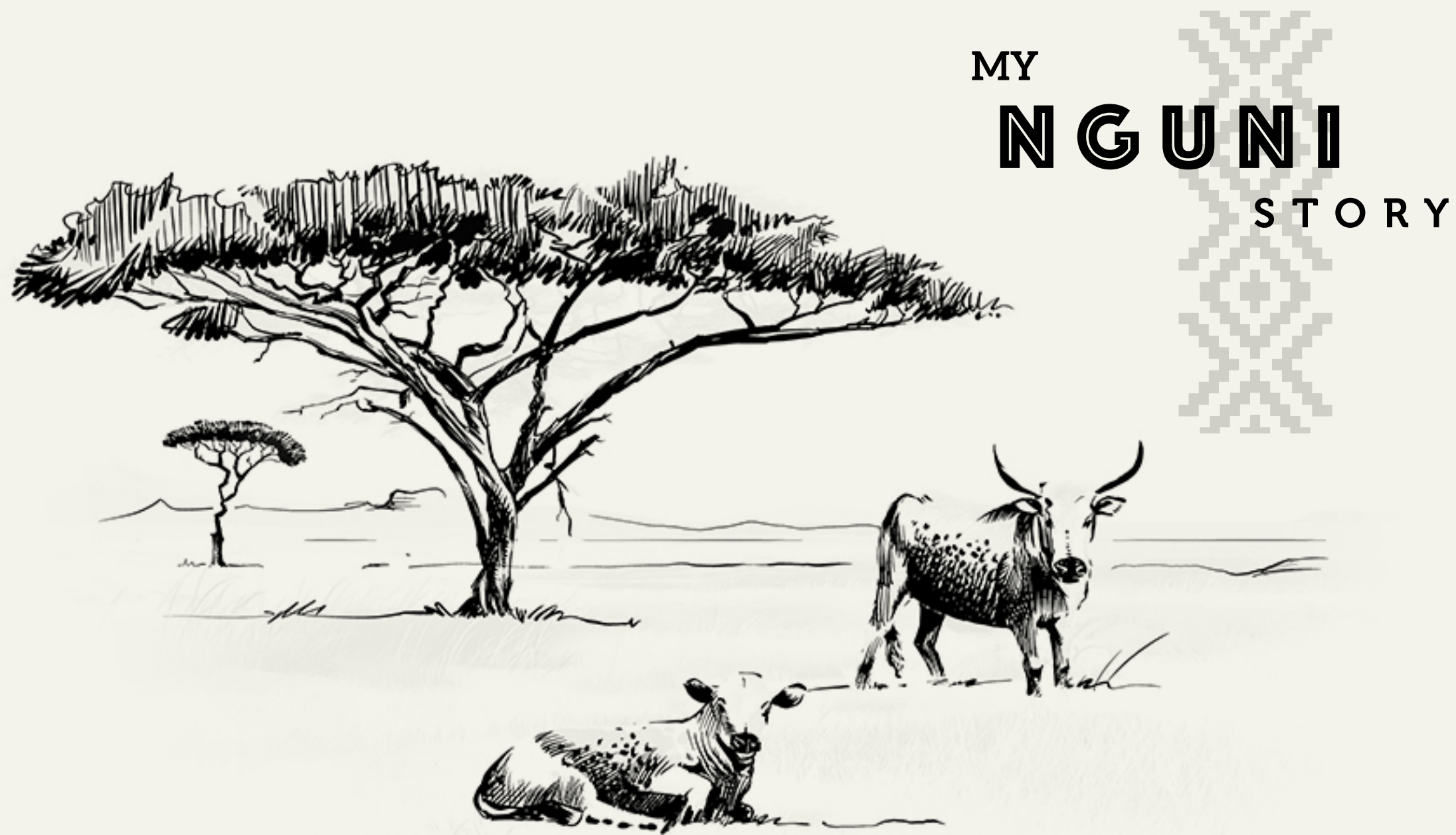
The leopard has been the subject of many myths and folklore legends as to how it got its spots. Perhaps the best remembered is the fable about how the leopard looked 'like a sunflower against a tarred fence' when he entered the forest from the veld. A kind Ethiopian painted the beautiful five-dotted rosettes onto his skin to help him blend into his forest surroundings.



LEOPARD SKIN
Black / Leather



Product Code: BVT4097801MA
Composition: 100% super soft acrylic, triple jacquard weave, open selvedge
GSM: 360 g/m2
Size: 140cm x 180cm / 55" x 71"



MY
NGUNI
STORY

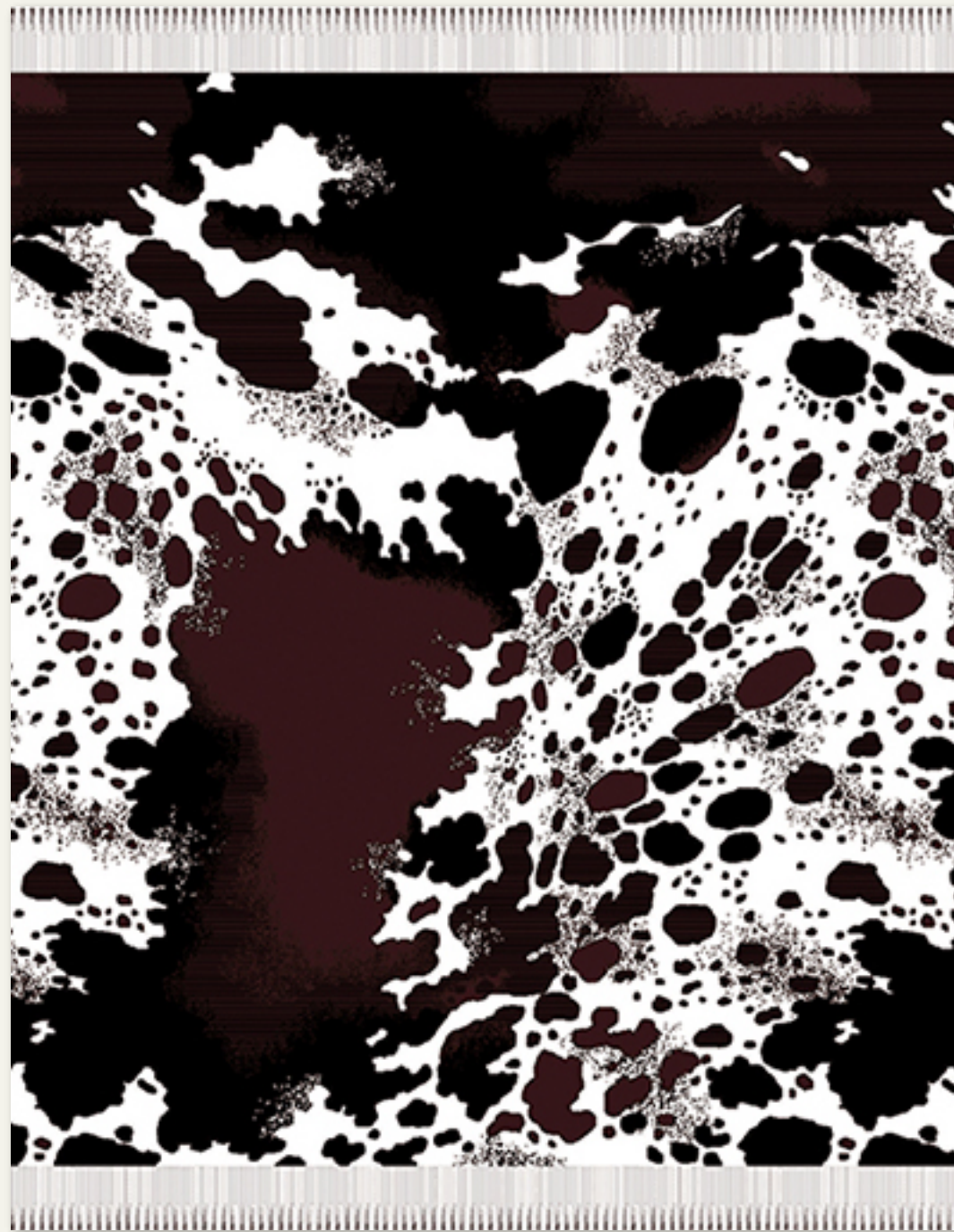
The Xhosa, Zulu and Swazi people brought the first ancestors of today's Nguni cattle to Southern Africa during their migration from East Africa between 600 and 1400 AD. Since then, the Nguni have played an important social, economic and spiritual role in these societies.

The beauty and uniqueness of each cow's skin has long been catalogued in the tribe's poetry. A creamy, dun coloured hide is called 'sour milk' whilst the name given to a brown or red Nguni with large spots and faint white edging is 'the stones of the Ngoye forest.'

One of the most famous stories surrounding these beautiful beasts is that of King Shaka of the Zulus. The king bred specific colour patterns for the many regiments of his army. This would help identify who was in command during battle. His elite personal guard was recognised by their pure white cowhides, from the Nguni royal herd.

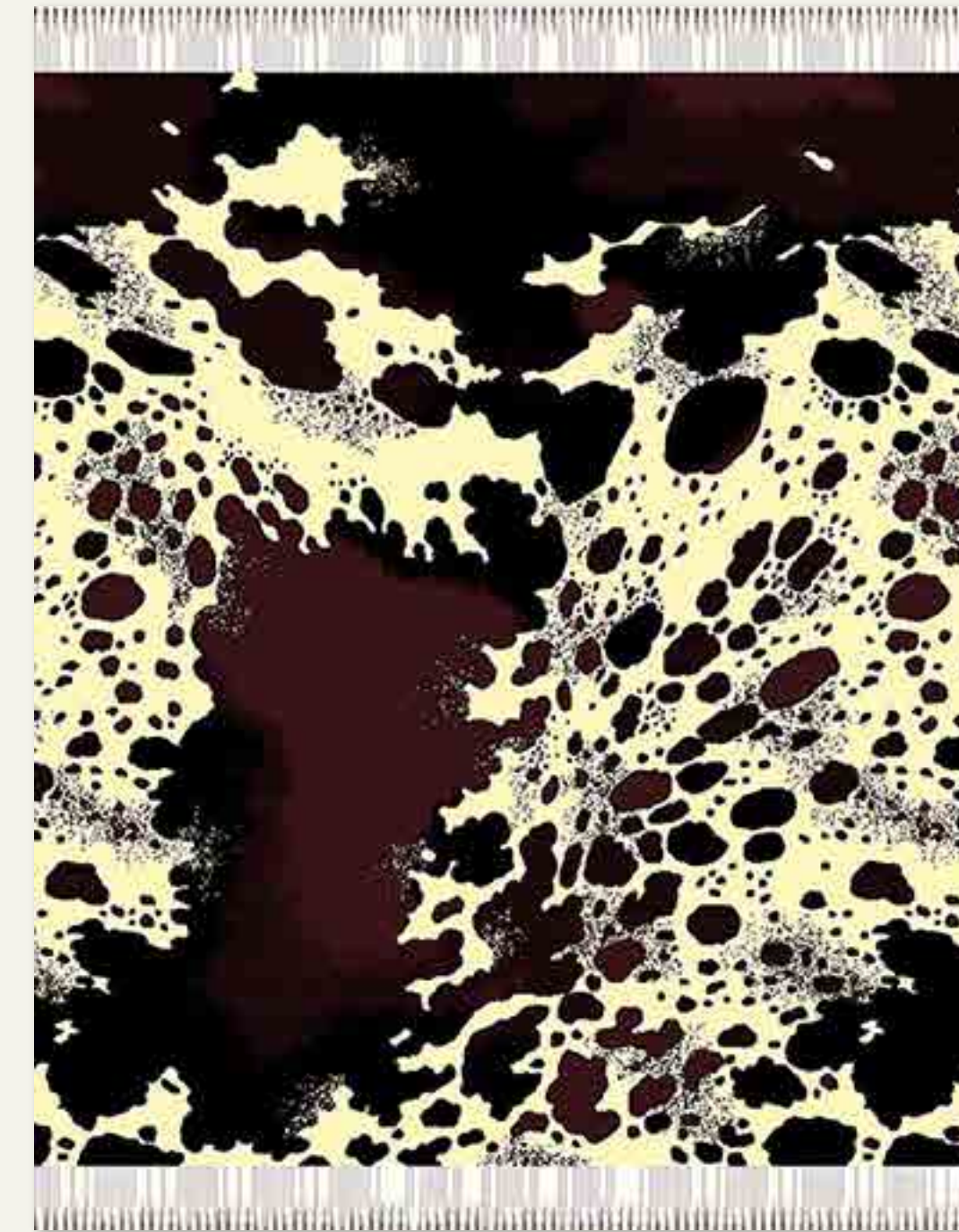


NGUNI SKIN
Black / Natural



Product Code: BVT3967801MA
Composition: 100% super soft acrylic, triple jaquard weave,
open selvedge
GSM: 360 g/m2
Size: 140cm x 180cm / 55" x 71"

NGUNI SKIN
Black / Ivory



Product Code: BVT3967802MA
Composition: 100% super soft acrylic, triple jaquard weave,
open selvedge
GSM: 360 g/m2
Size: 140cm x 180cm / 55" x 71"



Aranda

Contact us:

+27 (0) 11 693 3721

info@aranda.co.za

www.aranda.co.za

Head Office:

Corner Wol & Desert Street

Randfontein, Gauteng

South Africa, 1760