



**UNION  
TILES**

EST.1922

**SOFT FLOORING  
BROCHURE 2023-2024**



Union Tiles attaches great importance to searching for the latest trends and developments in the tile, wall and floor décor industry. We pride ourselves on stocking the latest tile fashions from Europe, South America, Asia, and locally.

As with most things in life, our choices are sometimes influenced by the latest fashion trends and visual appeal of wall and floor finishes. Corporate applications would require you to be aware of the brand's corporate image, lighting of the area to be tiled, surface hardness and scratch resistance. Union Tiles sales staff are qualified to assist in advising the best products to achieve the desired effect.

## OUR BRANCHES

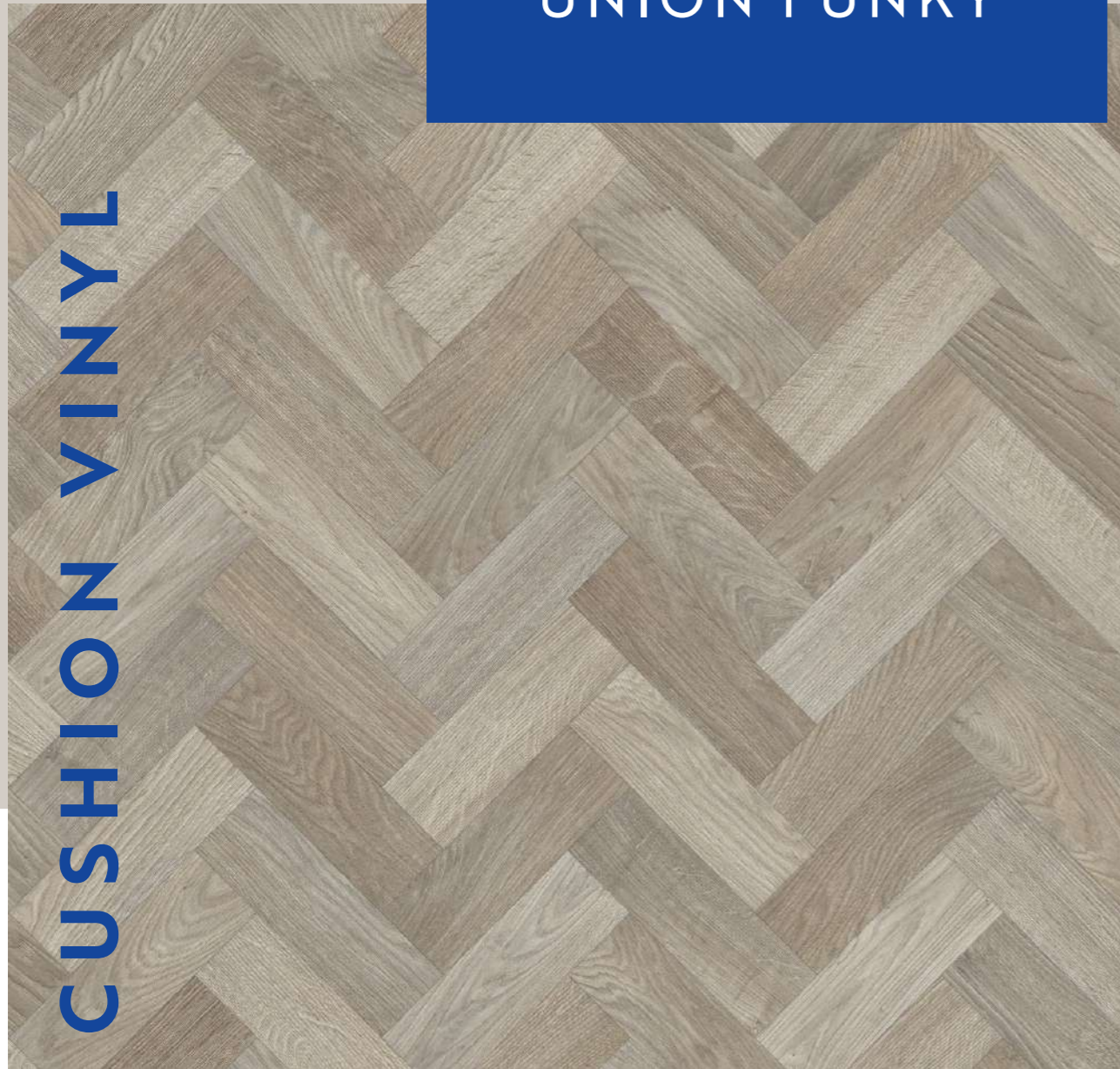
Head Office  
Bedfordview 011 663 2000

Silverlakes 012 809 0971 | Hillcrest 031 765 8021  
Ballito 032 946 0384 | Bloemfontein 051 421 1285  
Cape Town 021 510 5933 | Centurion 012 643 0121  
Randburg 011 791 4924 | Nelspruit 013 752 6775  
Windhoek +00264 61 271 296/7 | Swakopmund +00264 64 461 111



# UNION FUNKY

CUSHION VINYL



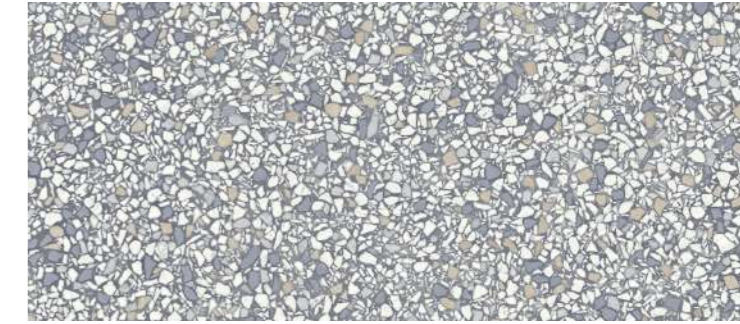
GINGER CROSS



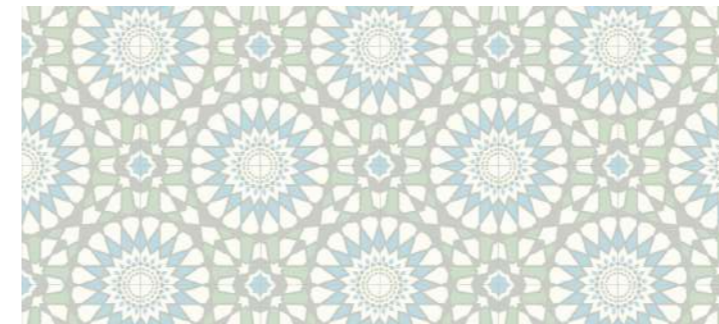
WASHED OAK



CHAMPAGNE OAK



ROCKY MOUNTAIN



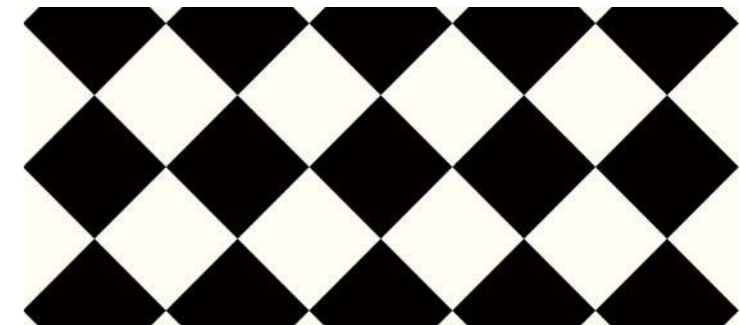
RETRO SKY



PLUSH ELITE



SPANISH CANDY



CHEQUEBOARD

## APPLICATION



RESIDENTIAL

## BENEFITS

- 100% VIRGIN MATERIAL
- SOUND ABSORBING
- 100% WATERPROOF
- EASY TO CLEAN
- DURABLE & RESILIENT
- HYGIENIC
- COST EFFECTIVE
- NO HARMFUL SUBSTANCES

## SPECIFICATIONS

ROLL SIZE: 30m x 2m AVERAGE | THICKNESS: 2.8mm | WEAR LAYER: 0.2mm

APPLICATION: DOMESTIC | INSTALLATION METHOD: STICK DOWN WITH APPROVED ADHESIVE

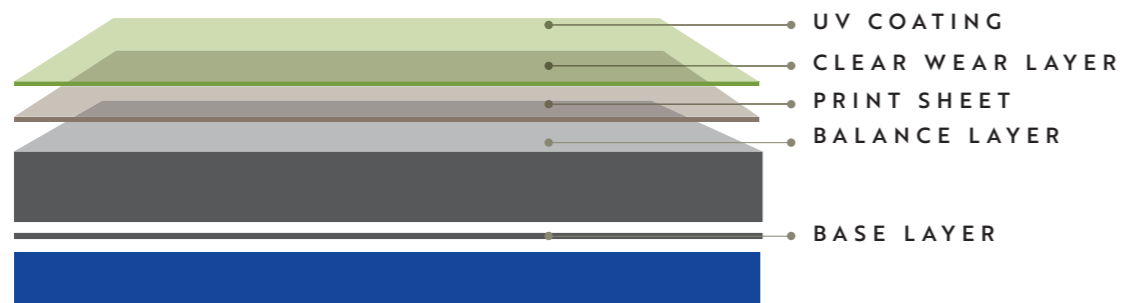
WARRANTY: 5 YEARS RESIDENTIAL

SOLD IN FULL ROLLS OR CUT LENGTHS PER M2.



# UNION DESIRE LVT

LVT DRY BACK  
GLUE DOWN



## APPLICATION



RESIDENTIAL

## BENEFITS

- 100% VIRGIN MATERIAL
- SOUND ABSORBING
- WATER RESISTANT
- EASY TO CLEAN
- DURABLE & RESILIENT
- HYGIENIC
- COST EFFECTIVE
- NO HARMFUL SUBSTANCES



UNDO01



UNDO02



UNDO04



UNDO05



UNDO06



UNDO09



UNDO10



UNDO12

## SPECIFICATIONS

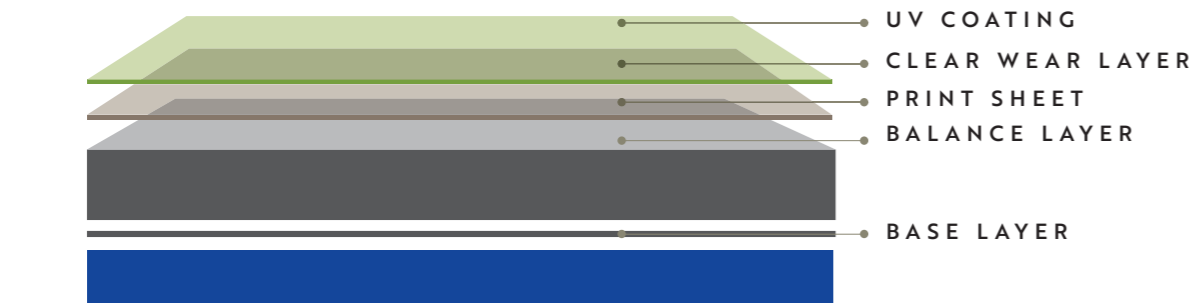
PLANK SIZE: 1219.2mm x 228.6mm | THICKNESS: 2mm | WEAR LAYER: 0.3mm  
TOTAL PLANKS PER BOX: 18 | M<sup>2</sup> PER BOX: 5.02 m<sup>2</sup>  
WARRANTY: 15 YEARS RESIDENTIAL

Variances can be expected from plank to plank in order to mimic the look of real wood.



# UNION CLASSIC

LVT DRY BACK  
GLUE DOWN



## APPLICATION



COMMERCIAL



RESIDENTIAL

## BENEFITS

- 100% VIRGIN MATERIAL
- SOUND ABSORBING
- WATER RESISTANT
- EASY TO CLEAN
- DURABLE & RESILIENT
- HYGIENIC
- COST EFFECTIVE
- NO HARMFUL SUBSTANCES



UNC101



UNC102



UNC103



UNC104



UNC105



UNC106



UNC107



UNC108

## SPECIFICATIONS

PLANK SIZE: 1216.2mm X 225.6mm | THICKNESS: 2.5mm | WEAR LAYER: 0.5mm

TOTAL PLANKS PER BOX: 16 | M<sup>2</sup> PER BOX: 4.39m<sup>2</sup> PER BOX

UV COATING | MICRO BEVELLED

WARRANTY: 20 YEARS RESIDENTIAL / 15 YEARS COMMERCIAL

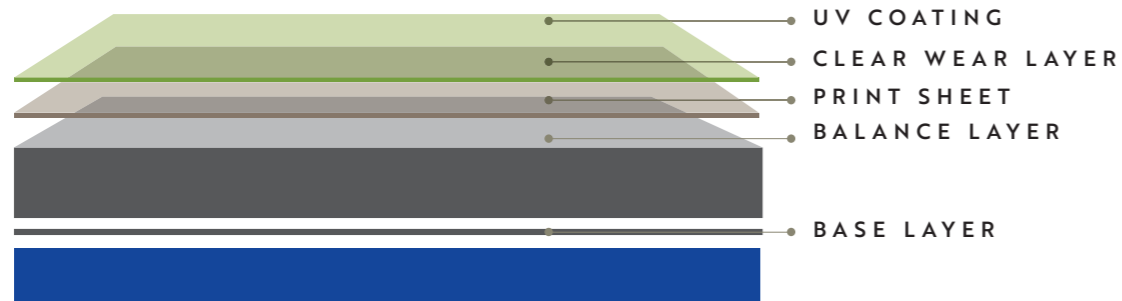
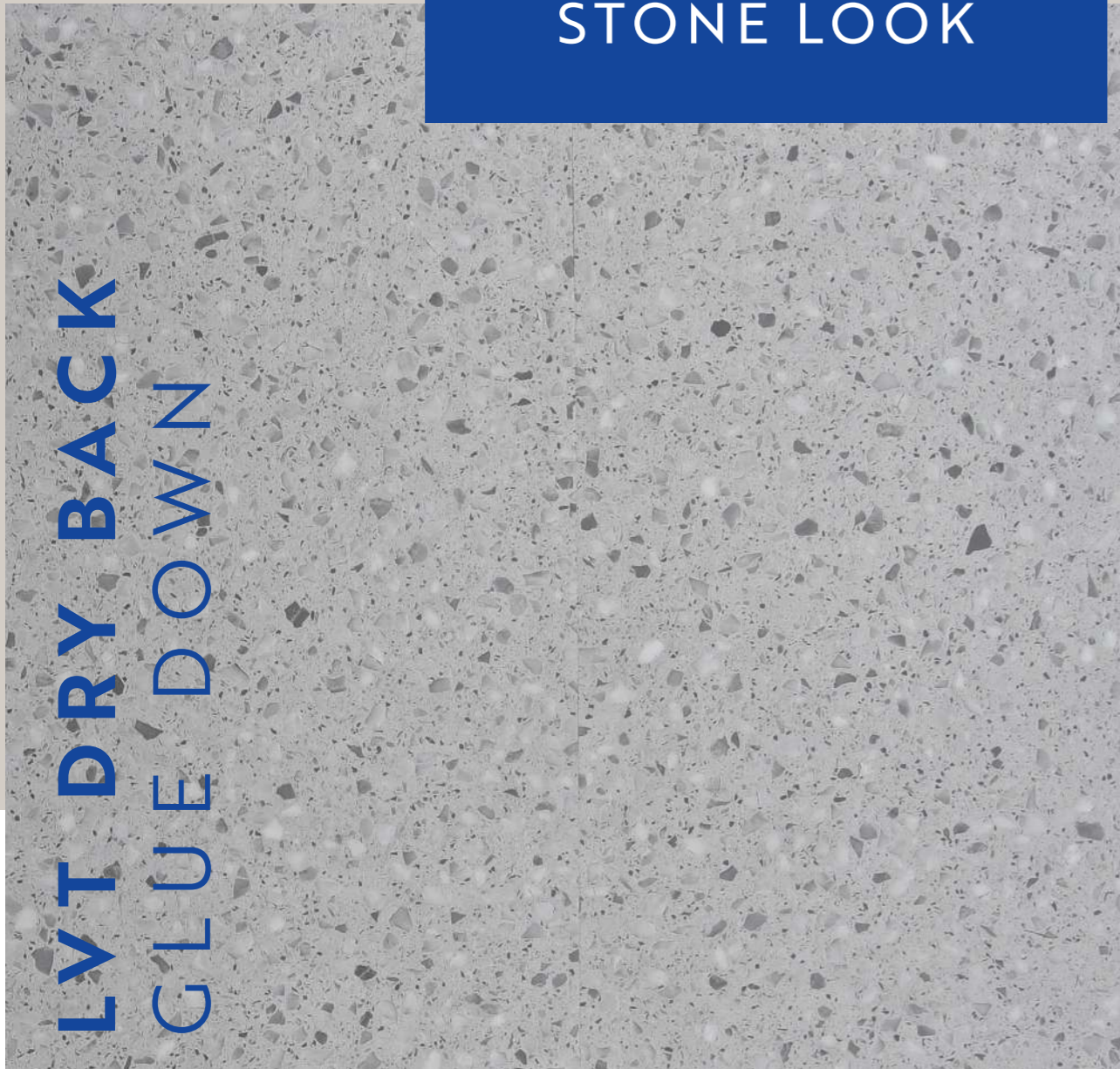
Variations can be expected from plank to plank in order to mimic the look of real wood.





# UNION STONE LOOK

LVT DRY BACK  
GLUE DOWN



## APPLICATION



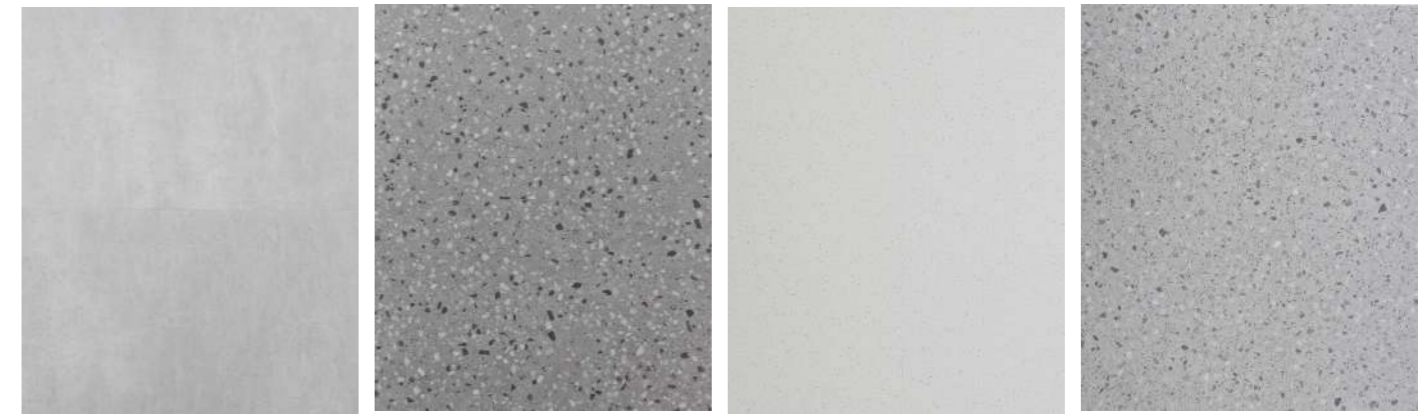
COMMERCIAL



RESIDENTIAL

## BENEFITS

- 100% VIRGIN MATERIAL
- SOUND ABSORBING
- WATER RESISTANT
- EASY TO CLEAN
- DURABLE & RESILIENT
- HYGIENIC
- COST EFFECTIVE
- NO HARMFUL SUBSTANCES



UNE001

UNE002

UNE003

UNE004



UNE005

UNE006

UNE007

UNE008



UNE009

UNE010

UNE011

UNE012

## SPECIFICATIONS

TILE SIZE: 304.8mm X 609.6mm | THICKNESS: 2.5mm | WEAR LAYER: 0.55

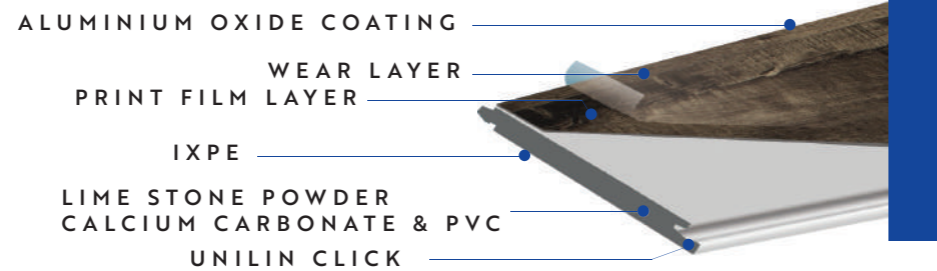
TOTAL TILES PER BOX: 22 | M<sup>2</sup> PER BOX: 4.087m<sup>2</sup> | MICRO BEVELLED

WARRANTY: 20 YEARS RESIDENTIAL / 15 YEARS COMMERCIAL



# UNION DESIRE SPC

RIGID CORE BOARD  
CLICK



## APPLICATION



LIGHT  
COMMERCIAL



RESIDENTIAL

## BENEFITS

- 100% VIRGIN MATERIAL
- SOUND ABSORBING
- EASY TO CLEAN
- DURABLE & RESILIENT
- HYGIENIC
- COST EFFECTIVE
- NO HARMFUL SUBSTANCES



UNS001



UNS002



UNS003



UNS004



UNS005



UNS007



UNS008



UNS009

## SPECIFICATIONS

PLANK SIZE: 1219.2mm X 228.6mm | THICKNESS: 4mm SPC +1mm IXPE =5mm

WEAR LAYER: 0,55mm | TOTAL PLANKS PER BOX: 8 | M<sup>2</sup> PER BOX: 2,23m<sup>2</sup>

SURFACE: DEEP EMBOSSSED | BEVEL: MICRO BEVELLED

WARRANTY: 20 YEARS RESIDENTIAL / 15 YEARS LIGHT COMMERCIAL

Variances can be expected from plank to plank in order to mimic the look of real wood.

Must be installed on a approved moisture barrier or a 80mic ldpe virgin plastic.



# UNION EXCEED

## HOMOGENEOUS VINYL SHEETING

### SPECIAL ORDER COLOURS



EC005

EC006

EC009

EC011

### APPLICATION



COMMERCIAL

### BENEFITS

- 100% VIRGIN MATERIAL
- SOUND ABSORBING
- WATER RESISTANT
- EASY TO CLEAN
- DURABLE & RESILIENT
- HYGIENIC
- COST EFFECTIVE
- NO HARMFUL SUBSTANCES

### COLOURS IN STOCK



EC001



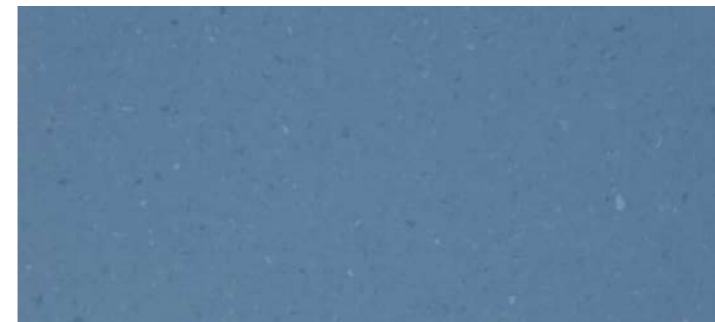
EC002



EC003



EC004



EC007



EC008



EC010



EC012

### SPECIFICATIONS

NON DIRECTIONAL PUR COATED VINYL SHEETING | ROLL SIZE: 20m X 2m THICKNESS: 2mm  
CONSTRUCTION: HOMOGENEOUS | APPLICATION: HEAVY COMMERCIAL  
100% WATERPROOF | INSTALLATION METHOD: STICK DOWN WITH APPROVED ADHESIVE  
WARRANTY: 20 YEARS COMMERCIAL

SOLD IN FULL ROLLS OR HALF ROLLS.  
PVC ACCESSORIES AVAILABLE.





## STOCK ITEMS



METRO JADE



METRO ASH



METRO GREY



METRO LAGOON



METRO INDIGO

# FORBO FLOTEX FLOCKED CARPET

KNOWN TO MANY IN THE INDUSTRY, FORBO PRODUCTS ARE AVAILABLE AT YOUR NEAREST UNION TILES.

PLEASE VISIT OR CONTACT YOUR NEAREST UNION TILES BRANCH FOR MORE INFORMATION.

## APPLICATION



HEAVY  
COMMERCIAL



RESIDENTIAL

## BENEFITS

- 100% VIRGIN MATERIAL
- SOUND ABSORBING
- EASY TO CLEAN
- DURABLE & RESILIENT
- HYGIENIC
- COST EFFECTIVE
- NO HARMFUL SUBSTANCES

## SPECIFICATIONS

### STOCKED PRODUCT

ROLL SIZE: 30m X 2m | THICKNESS: 4.3mm

NYLON FIBRES LAYERED ONTO A REINFORCED PVC BACKING

APPLICATION: RESIDENTIAL / HEAVY COMMERCIAL

INSTALLATION: METHOD STICK DOWN WITH APPROVED ADHESIVE

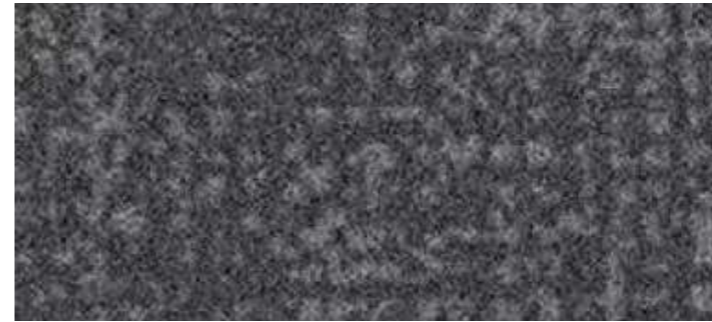
WARRANTY: UP TO 16 YEARS

SOLD IN FULL ROLLS OR CUT LENGTHS





## STOCK ITEMS



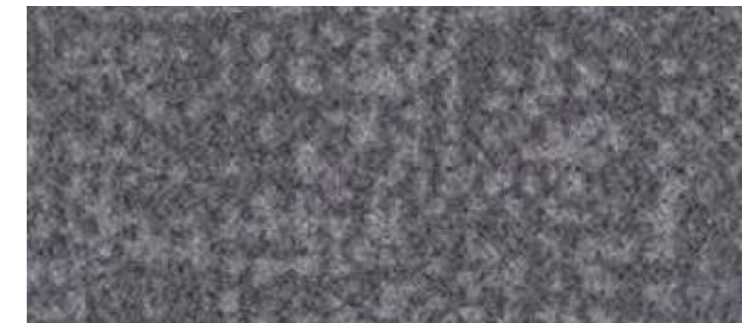
METRO GREY



GALGARY AZURE



METRO PETROL



METRO NIMBUS

# FORBO FLOTEX FLOCKED TILE

KNOWN TO MANY IN THE INDUSTRY, FORBO PRODUCTS ARE AVAILABLE AT YOUR NEAREST UNION TILES.

PLEASE VISIT OR CONTACT YOUR NEAREST UNION TILES BRANCH FOR MORE INFORMATION.

## APPLICATION



HEAVY  
COMMERCIAL



RESIDENTIAL

## BENEFITS

- 100% VIRGIN MATERIAL
- SOUND ABSORBING
- EASY TO CLEAN
- DURABLE & RESILIENT
- HYGIENIC
- COST EFFECTIVE
- NO HARMFUL SUBSTANCES

## SPECIFICATIONS

### STOCKED PRODUCT

TILE SIZE: 50cm x 50cm | THICKNESS: 4.3mm | TILES PER BOX: 12 | M2 PER BOX: 3m<sup>2</sup>

NYLON FIBRES LAYERED ONTO A REINFORCED PVC BACKING

APPLICATION: RESIDENTIAL & HEAVY COMMERCIAL

INSTALLATION: METHOD STICK DOWN WITH APPROVED ADHESIVE

WARRANTY: UP TO 16 YEARS



# allura<sup>®</sup> flex II

## FORBO ALLURA FLEX



NATURAL CONCRETE



GRIGIO CONCRETE

### SPECIFICATIONS

#### NATURAL CONCRETE

TILE SIZE: 50cm x 50 cm

TILES PER BOX: 10

M2 PER BOX: 2,50m<sup>2</sup>

#### GRIGIO CONCRETE

TILE SIZE: 100cm x 100cm

TILES PER BOX: 1

M2 PER BOX: 1m<sup>2</sup>

THICKNESS: 5mm | WEAR LAYER: 1mm | CLASS 34, HEAVY COMMERCIAL USE

INSTALLATION: STICK DOWN WITH APPROVED ADHESIVE

WARRANTY: UP TO 16 YEARS

### APPLICATION



HEAVY  
COMMERCIAL



RESIDENTIAL

### BENEFITS

- 100% VIRGIN MATERIAL
- SOUND ABSORBING
- EASY TO CLEAN
- DURABLE & RESILIENT
- HYGIENIC
- COST EFFECTIVE
- NO HARMFUL SUBSTANCES

### SPECIAL ORDER



BLUE CLOUDS



CALMING SKY



CANYON CEMENT



CHARCOAL CEMENT



CORODED STRATA



DREAMY SKY



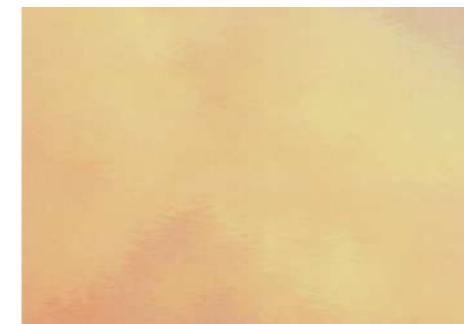
GREY CLOUDS



IRON SPECKLED



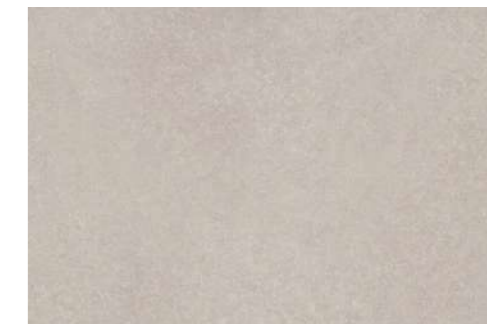
LIGHT CEMENT



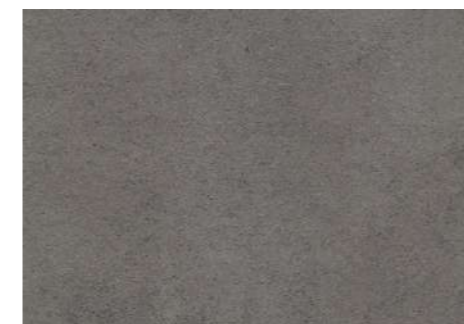
MAGICAL SKY



OXIDISED STRATA



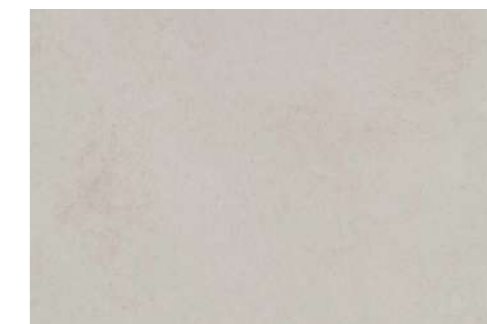
PALE SPEK



ROCK CEMENT



RUST SPECKLED



SAND CEMENT

AVAILABLE IN 2 TILE SIZES: 50cm x 50cm or 100cm x 100cm

# allura<sup>®</sup> puzzle



## FORBO ALLURA PUZZLE



LEAD STONE



GREY STONE

### SPECIFICATIONS

TILE SIZE: 96cm x 96cm | THICKNESS : 5mm | WEAR LAYER : 0,7mm

TILES PER BOX: 1 | M2 PER BOX: 0,92m2

CLASS 34, HEAVY COMMERCIAL USE

DIMENSIONAL STABILITY: 0,05%

WARRANTY: UP TO 20 YEARS

### APPLICATION



HEAVY  
COMMERCIAL

### BENEFITS

- 100% VIRGIN MATERIAL
- SOUND ABSORBING
- EASY TO CLEAN
- DURABLE & RESILIENT
- HYGIENIC
- COST EFFECTIVE
- NO HARMFUL SUBSTANCES

### SPECIAL ORDER



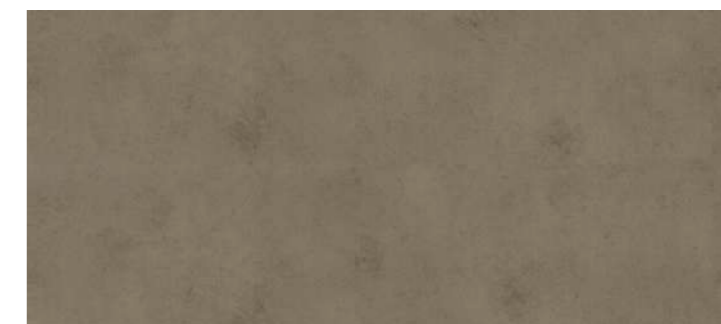
COAL CONCRETE



NATURAL CONCRETE



SAND CEMENT



CANYON CEMENT



CORRODED STRATA



OXIDIZED STRATA



KNOWN TO MANY IN THE INDUSTRY, FORBO PRODUCTS ARE AVAILABLE AT YOUR NEAREST UNION TILES.

PLEASE VISIT OR CONTACT YOUR NEAREST UNION TILES BRANCH FOR MORE INFORMATION.



**Linoflex**, also known as Linoleum is a true Co2 Natural product made from 97% natural materials, this hard wearing sheeting product has been around for over 130 years and has been used in many different locations, from hospitals to office parks, Linoleum is one of the greenest floorcoverings on the planet, now pre sealed as well, so the product is good to go straight after installation.



**Eternal**, is a heterogeneous product available in colours, material or in the ever growing trend of wood look designs. 2mm thick with a 0.7mm wear layer, this has a class 34 commercial use and a class 43 industrial use making this product suitable for practically any location where this type of sheet material is required.



**Sarlon** is another Heterogeneous product available in acoustic 15dB and 19dB products along with the ground breaking Modulup, this is a loose lay sheeting product allowing speedy installs with minimal sub floor prep, install today, use the same day, especially suited to hospital applications where quick turn arounds are required meaning minimum downtime for busy hospital areas.



**Sphera** is a homogeneous product and is available in standard sheeting and also static dispersion ranges, this is the back bone of Forbo hospital and educational product offering. Durable and is available in a range of colours to suit every palate, smart top is the surface treatment and ensures a long lasting protective coating, this product does not need to be stripped or sealed after installation but will require ongoing care in line with any other PUR coated product.



**Allura** is not just Flex and Puzzle, this LVT offering is available in planks, tiles and interlocking products with wear layers from 0.7mm up to 1mm, there are also acoustic products that will assist in the reduction of impact sound. Wood look or stone look, Alura LVT is the solution for every flooring.



**Tessera** is a range of tufted carpet tiles, these tiles are backed and can be loose laid. Made in several sizes including 50cm x 50cm tiles and longer plank products. Loop pile or cut and loop options are available giving a luxurious feel underfoot. Modern designs will suit any office environment and will add a touch of class to wherever they are installed.



**Coral** entrance matting is a must for any commercial environment, several different designs are available and Forbo will increase any warranty by 6 years should the entrance matting be installed in front of any of their flooring products, such is the importance of a good entrance matting system.

In addition to all of these products, Forbo prides themselves on being a solution based company, we have options on sports flooring, ESD and Cleanroom solutions, wet rooms, transport flooring and needle punch carpeting.



## CREDENTIALS





[WWW.UNIONTILES.CO.ZA](http://WWW.UNIONTILES.CO.ZA)