



IKONTM
ALUMINIUM

Minimalist

In a rapidly changing architectural landscape, the pursuit of timeless excellence becomes paramount. Architects, historians, and theorists have sought to define the essence of architectural greatness, each era bringing forth its own perspectives and interpretations.

Today, as we navigate the intricate blend of technology, sustainability, and aesthetic appeal, we find inspiration in the evergreen concepts that transcend time. Our quest is guided by principles that echo across generations, rooted in the understanding that architectural creations must seamlessly integrate strength, utility, and elegance.

Our approach embraces the core tenets of architecture, which demand that functionality and beauty coexist harmoniously. Our slimline sliding door system stands as a testament to this philosophy - a synthesis of strength and precision, utility and grace.

Strength and utility converge to bring forth a product that not only endures but excels in performance. The engineering behind our slimline sliding door system ensures robustness and smooth operation, enabling seamless transitions between spaces.

Elegance is woven into the very fabric of our design, as we meticulously craft an aesthetic that marries simplicity with sophistication. Each element of our door system is a deliberate expression of minimalist elegance, inviting light and form to dance together.

“Simplicity is the ultimate sophistication.” - Leonardo da Vinci.



Minimal SLIDING DOOR-FINO₂₅



Product Highlights:

Elegance Redefined: Discover the beauty of minimal frames combined with expansive glass, achieving an astonishing glass-to-frame ratio of 96.3% achieved with our Minimal 25mm interlock.

Invisible Drainage: Seamlessly integrate indoors and outdoors with our concealed underground drainage system, ensuring both accessibility and visual finesse.

Versatile Options: Experience expansive glass areas from floor to ceiling, minimalist frames that flush-fit in walls, ceilings, and floors, along with options like open corner and pocket sliding designs.

Modular Freedom: Enjoy the versatility of a modular system accommodating an infinite number of panels by effortlessly joining tracks, offering flexibility and sophistication.

Thermal Comfort: Experience optimal thermal comfort with exceptional insulation, attaining U_w values ranging from $0.7W/m^2K$ to $1.7W/m^2K$, tailored to your glazing preferences.

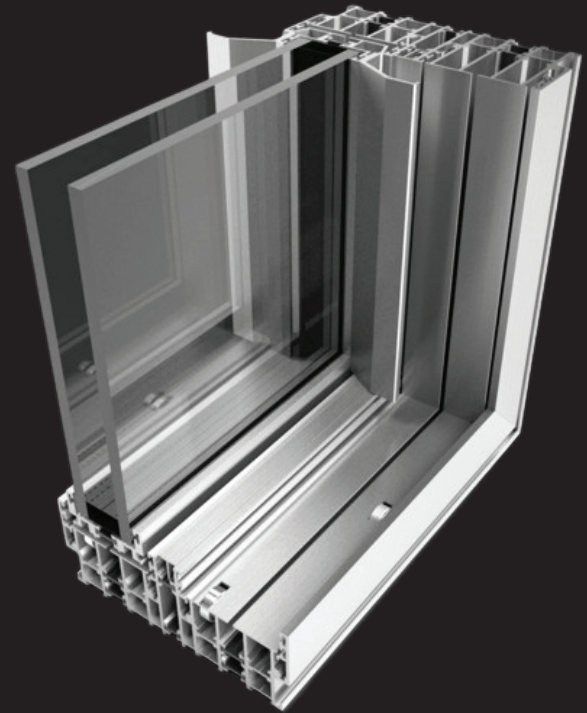
Hardware Mastery: Elevate your expectations with robust hardware, supporting loads of up to 400 kg on automation and up to 500 kg on manual doors, bolstered by stainless steel rollers and rails for enduring reliability.

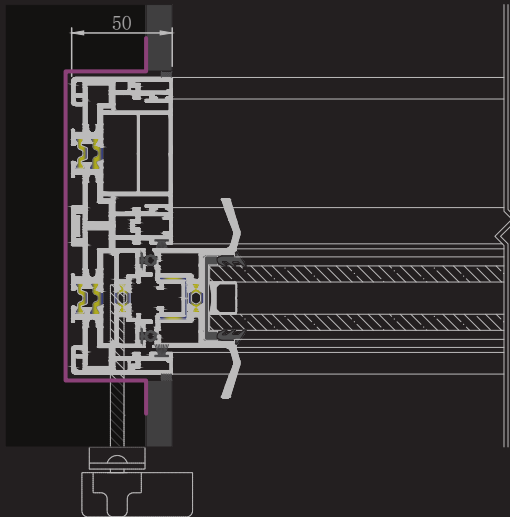
Unparalleled Advantage:

Innovative Design: Encounter uniqueness through our features that set a new standard in architectural solutions.

Exemplary Craftsmanship: Immerse in excellence evident in every detail, meticulously crafted to deliver an unmatched experience.

Tailored Precision: Choose customizable options aligned with your distinct needs, ensuring your door system is perfectly attuned to your preferences.





Key Features:

Contemporary Elegance: Embrace the essence of modernity with our sleek, slimline profile, seamlessly blending with various architectural styles.

Effortless Transitions: Experience Fluid Sliding mechanisms that effortlessly connect indoors and outdoors, creating a harmonious flow.

Enduring Excellence: Elevate your expectations with impeccable craftsmanship, ensuring your door system withstands time and environmental demands.

Amplified Natural Light: Illuminate your spaces with the brilliance of natural light while optimizing energy efficiency for a sustainable environment.

Aesthetic Enhancement: Elevate aesthetics as our door system not only functions flawlessly but also exudes visual charm.

Applications:

Residential Refinement: Elevate living rooms, rejuvenate patios into tranquil havens and expand entertainment areas with openings reaching heights or widths up to 4.5 meters.

Commercial Sophistication: Elevate office spaces with contemporary allure, redefine dining experiences at restaurants, and enrich hotels with luxurious touches.

Automation Option Available: Experience even greater convenience with our cutting-edge Automatic Linear Magnetic Levitation Drive System.



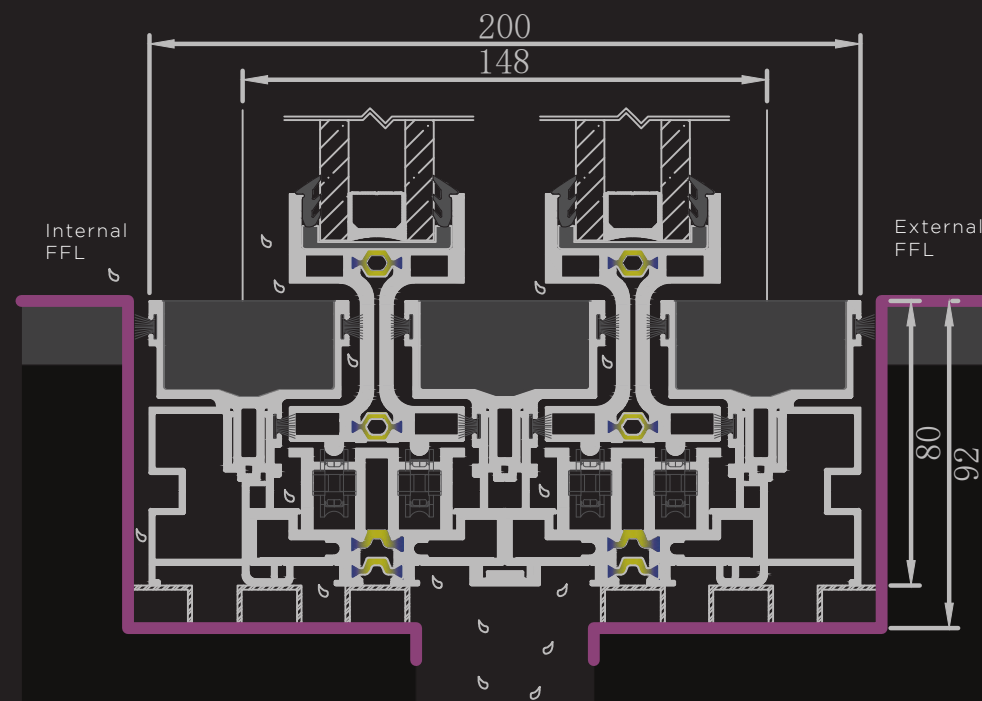
Introduction

Introducing FINO25 a revolutionary exterior opening system renowned for its unparalleled thermal and acoustic insulation, making it the ultimate choice for even the most frigid climates. Not only does it excel in security, meeting stringent intrusion prevention criteria, but it also offers remarkable flexibility in modular configurations. From corner openings to pocket sliding designs, tilted spans, automated sliding doors, and vertical drop-down mosquito nets, ensuring adaptability to various design preferences. Plus, it accommodates a wide range of accessories, from heated glass to complete automation, enhancing convenience and comfort. With FINO25 enjoy expansive double-glazed areas of up to 11m² supported by sleek 25mm vertical profiles..

Concealed Track:

Our innovative FINO25 concealed track, is a testament to our commitment to pushing the boundaries of design excellence. Our revolutionary FINO System redefines minimalism by seamlessly integrating the frame beneath the floor, walls, and ceiling, creating a harmonious flow between indoor and outdoor environments. The narrow tracks are discreetly covered by matching interior materials, ensuring a sleek and uninterrupted aesthetic. Featuring a slender "I" shaped profile, our doors effortlessly glide over a discreet floor slot, providing smooth operation and unparalleled elegance. Engineered with our proprietary High Thermal Break Composite (HTBC), the Fino25 concealed track system delivers exceptional performance in terms of thermal efficiency, structural integrity, and functionality.

Embrace the future of design with our FINO25 concealed track, where innovation meets sophistication, elevating your space to new heights of luxury and style. Moreover, our concealed track system offers unparalleled weatherproof performance, safeguarding your space against harsh weather conditions while seamlessly integrating with various floor tile materials. Additionally, our specially engineered and removable track insert ensures that floor finishes remain flush, accommodating various tile types, and facilitating easy maintenance when required, providing added convenience and peace of mind.

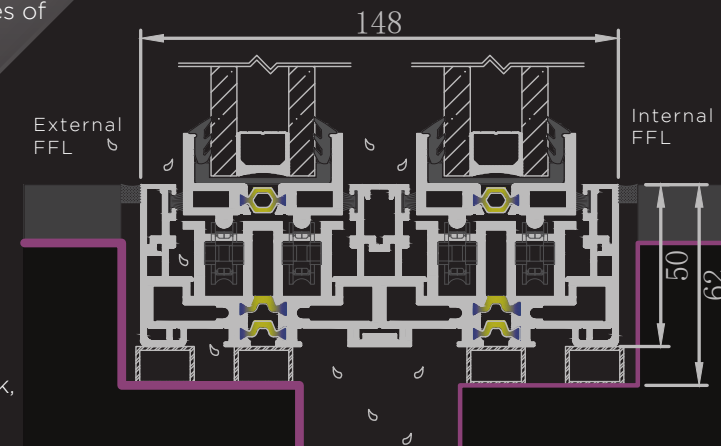




Flush Track:

Elevate the ambiance of your living space with our FINO25 flush track, where seamless integration meets exquisite design. With the interior and exterior floor finishes meeting at the same level, our sunken track creates a striking visual impact while preserving the clean lines of modern architecture.

The discreet 11.5mm sunken step ensures a smooth transition between spaces, enhancing the sense of continuity and openness. Despite its minimalist profile, the Fino25 flush track maintains uncompromised performance, providing exceptional thermal insulation and structural integrity. Embrace the elegance of simplicity with our FINO25 flush track, where every detail is meticulously crafted to perfection.



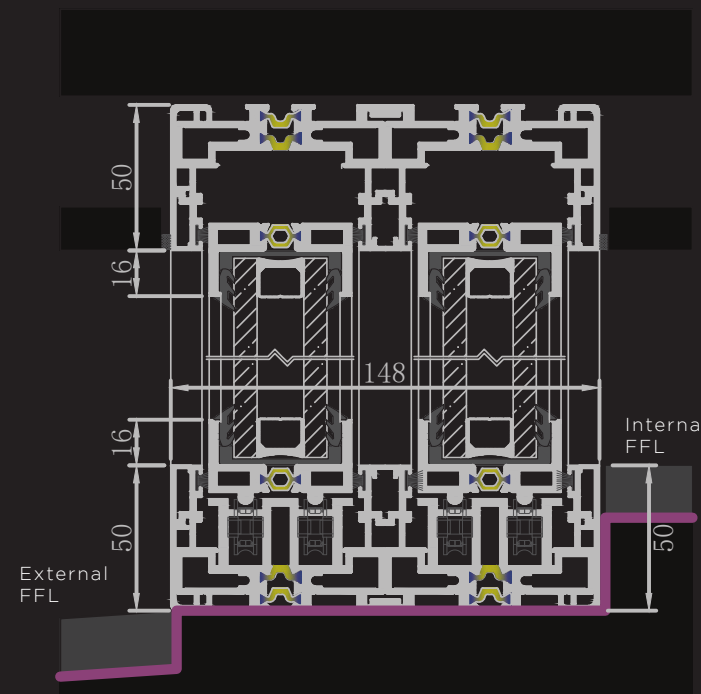
Stepped Track:

Experience the perfect harmony of form and function with our stepped track design, we achieve a flawless finish that elegantly bridges the gap between interior and exterior environments. The track is meticulously crafted to align flush with the interior flooring, while delicately stepping down to meet the outdoor surface. This meticulous attention to detail not only ensures a visually stunning aesthetic but also maintains the high standards of the FINO25 system. Despite the subtle step, the integrity of the thermal break remains uncompromised, guaranteeing optimal energy efficiency and structural stability. Additionally, our stepped track design offers superior weatherproof performance, ensuring your space remains protected against the elements while exuding timeless elegance.

QUICK GUIDE

Vertical profile width
Max. leaf size (width or height)
Max. leaf weight
Max. glazed area
Glass cavity

25mm
4500x2400mm
400kg automation /
500kg manual p/panel
up to 11m² (depending on
glass sheet size availability)
41mm





Groundbreaking Aesthetics of Interlock Profiles:

Discover the unparalleled beauty of our Fino25 system with its groundbreaking interlock profiles. With a width of just 25mm, our interlock profiles redefine slimline elegance, allowing for minimal aluminum obstruction and maximizing your view of the outdoors. For higher doors, our heavy-duty option maintains the same 25mm visible width while conforming to inertia calculation specifications, ensuring both strength and aesthetics.

Experience the epitome of sleek design with Fino25, where every detail is meticulously crafted to enhance the aesthetic appeal of your space.

Seamlessly Incorporated Door Handle:

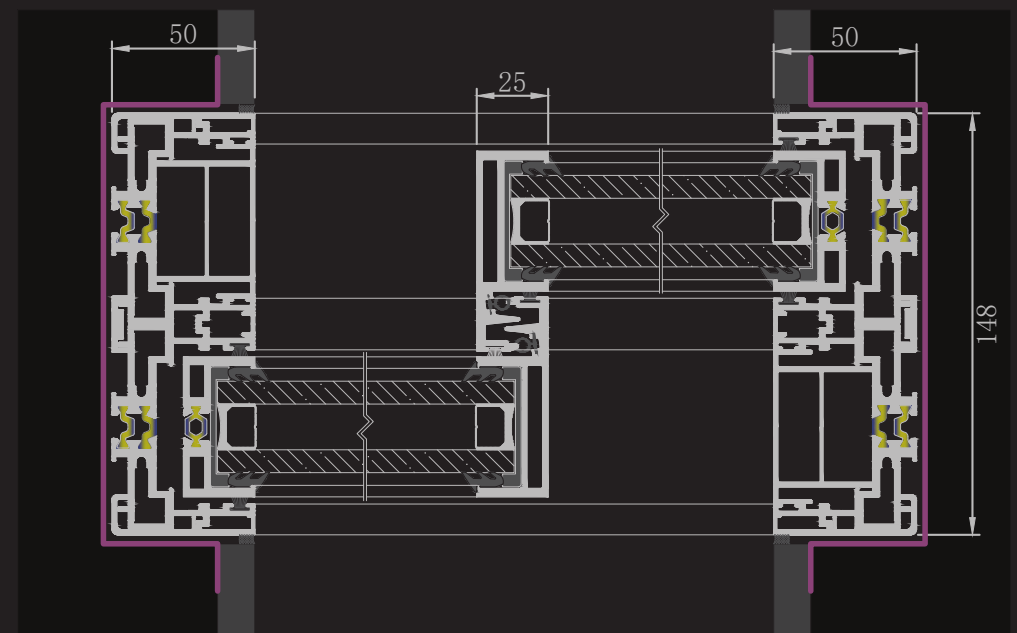
Incorporating seamless design elements, our Fino25 system features a door handle seamlessly integrated into the door profile. This innovative approach not only enhances the visual appeal of the door but also ensures a smooth and uninterrupted surface, adding to the overall elegance of your space. Say goodbye to protruding handles and hello to seamless sophistication with Fino25.

Specially Engineered Handle and Lock:

Experience unmatched security and convenience with our specially engineered handle and lock system. Unlike standard door handles and locks that are fitted onto the door, our system features a handle and lock that fits onto the wall with a 4-point locking mechanism. This advanced design enhances security while offering effortless operation. Additionally, for added flexibility, you have the option to have the handle fitted onto the interlocking profile, providing personalized solutions tailored to your needs. Upgrade to Fino25 for enhanced security, convenience, and style.

Advanced Automation Technology:

Introducing our cutting-edge Automatic Linear Magnetic Levitation Drive System, heralding a new era in door automation. Crafted for modern interiors and exteriors, be it commercial, public, or private spaces, this system revolutionizes the conventional automatic sliding doors. Powered by innovative linear magnetic drive technology (LMD), it ensures safe, reliable, and whisper-quiet operation while boasting anti-pinch and overload protection for utmost safety. With a sleek, compact design and Bluetooth or Wi-Fi-controlled convenience, our system effortlessly handles multiple-leaf doors up to 400kg each, offering unparalleled smoothness and silence thanks to its magnetic levitation technology. Compliant with European energy standards, it operates efficiently, without compromising safety or requiring bulky sensors. By eliminating belts and gears, our system guarantees low maintenance, ensuring years of seamless operation. Say goodbye to noise and mechanical hassles with our state-of-the-art magnetic door solution.





Minimal WINDOWS-FINO₇₀





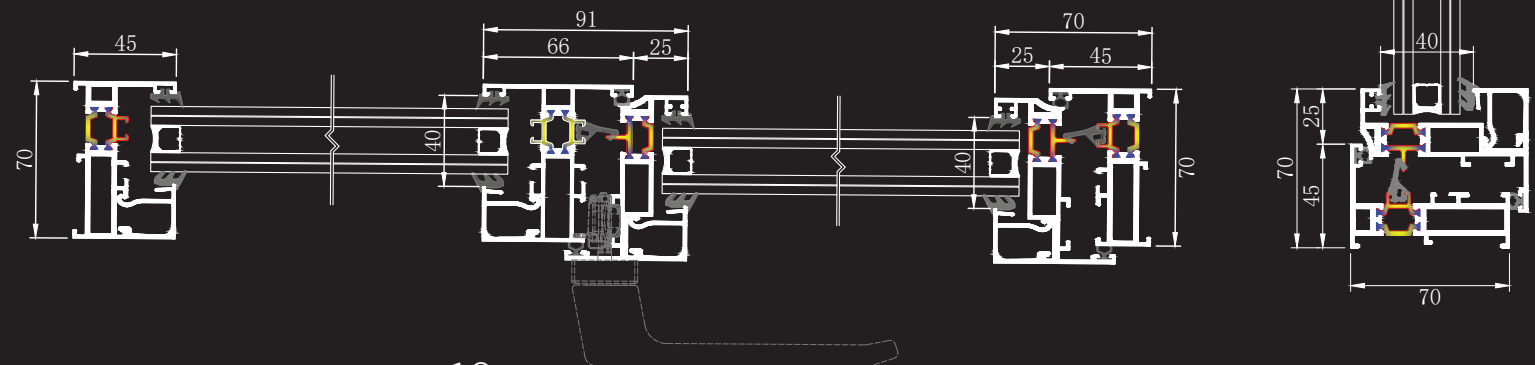
Introducing our FINO70 Slimline Thermally Broken international-inspired Tilt & Turn Window, is a masterpiece of design and innovation that redefines elegance and functionality in window solutions. At the heart of this exceptional window system lies the beauty of the 70mm visual aluminum profile, meticulously crafted to create a sleek and sophisticated aesthetic. Compared to our Nova system, the visual aluminum is reduced by 30mm, yet the integrity remains uncompromised. The greater depth of 70mm enhances structural inertia, ensuring durability and longevity for your space.

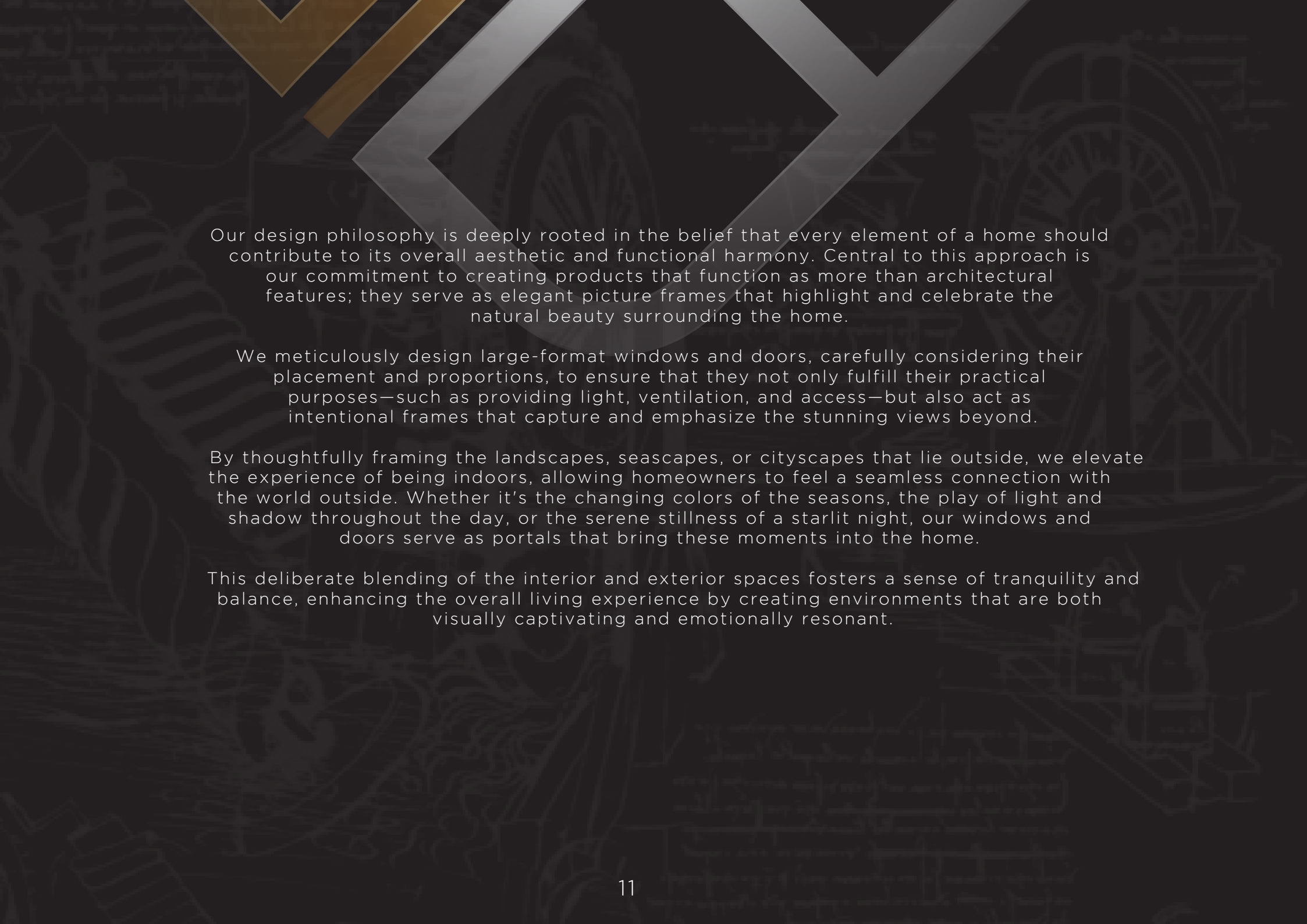
The versatility of our FINO70 window extends beyond its stunning design. It seamlessly integrates with our thermally broken shopfront system, offering a seamless transition between window and storefront solutions. Whether you require a standard mullion or a robust 175mm heavy-duty mullion for larger shopfronts, our system delivers unparalleled support and stability. Furthermore, our FINO70 window can be customized to accommodate bulletproof glass, providing enhanced security without sacrificing style. For added protection, our system can also incorporate concealed Armox bulletproof steel, offering peace of mind in any environment.

With a glass cavity of up to 40mm, our FINO70 window system allows for various glass types, providing flexibility to meet your specific needs and preferences. Our window system ensures optimal thermal insulation, soundproofing, and security. Experience the perfect harmony of form and function with our FINO70 window, where every detail is meticulously crafted to elevate your space to new heights of sophistication and security. Choose FINO70 for a window solution that transcends expectations and sets the standard for excellence in modern architecture.

QUICK GUIDE

Max. leaf height	3000mm
Max. leaf width	1700mm
Max. leaf weight	130kg
Max. glazed sash area	up to 4.2m ²
Glass cavity	40mm





Our design philosophy is deeply rooted in the belief that every element of a home should contribute to its overall aesthetic and functional harmony. Central to this approach is our commitment to creating products that function as more than architectural features; they serve as elegant picture frames that highlight and celebrate the natural beauty surrounding the home.

We meticulously design large-format windows and doors, carefully considering their placement and proportions, to ensure that they not only fulfill their practical purposes—such as providing light, ventilation, and access—but also act as intentional frames that capture and emphasize the stunning views beyond.

By thoughtfully framing the landscapes, seascapes, or cityscapes that lie outside, we elevate the experience of being indoors, allowing homeowners to feel a seamless connection with the world outside. Whether it's the changing colors of the seasons, the play of light and shadow throughout the day, or the serene stillness of a starlit night, our windows and doors serve as portals that bring these moments into the home.

This deliberate blending of the interior and exterior spaces fosters a sense of tranquility and balance, enhancing the overall living experience by creating environments that are both visually captivating and emotionally resonant.

CONTACT US

HEAD OFFICE

Tel:

+27 (0)11 524 0648

+27 (0)11 026 2063

Email:

info@ikonalu.co.za

Physical Address:

**21 Cardiff Avenue, Apex,
Gauteng, South Africa**

www.ikonalu.co.za

KRAMERVILLE

Tel:

+27 11 026 2063

Physical Address:

**14a Kramer Rd, Kramerville,
Sandton, 2090**

CAPE TOWN

Tel:

+27 21 300 5775

Physical Address:

**Block 1 Unit 8, Northgate Business Park,
Gold Road, Brooklyn, Cape Town, 7405**

